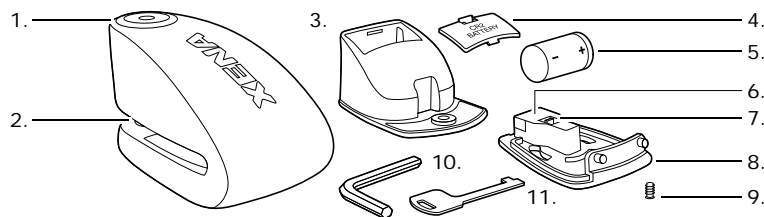


## INTRODUCTION

Thank you for choosing a XENA disc-lock alarm: the world's strongest, smartest, loudest motorcycle security solution. Please read this booklet carefully.

### A. XX15 alarmed disc-lock parts



1. Lock barrel
2. Locking pin
3. Alarm module
4. Battery cover
5. Battery
6. Reflector
7. Spring-loaded catch
8. Module cover
9. Screw
10. Allen key
11. Key tool (with key code & serial number)

### Quick start guide

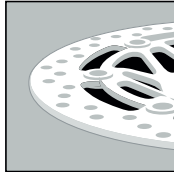
Your XENA XX15 Series disc-lock alarm comes with a CR2 long-life lithium battery included. Please install battery before use.

### Locking your motorcycle

- Insert key in lock and rotate clockwise. Lock barrel will spring open.
- Locate hole in front brake-disc sufficient to allow locking pin to pass through.
- Slide lock on to disc and depress key barrel to insert locking pin.
- Turn the key counter-clockwise to lock.

### Fitting your XENA to your motorcycle's brake disc

1. Brake disc thickness:  
less than 7mm (1/4")
2. Locking pin size:  
14mm (1/2")
3. Distance from locking pin to back of disc slot\*:  
60mm (2 3/8")



- !** **Important:** the locking pin can pass through ANY hole on disc (dark areas on diagram).

### Arming the alarm

- There is no on-off switch. The unit automatically senses the presence of your brake disc.
- Important: Ensure Reflector (A6) is covered by the brake disc.
- Your XENA alarmed disc-lock is self-arming. The alarm sensors will become active 5 seconds after being locked on your brake-disc. The alarm will beep once to confirm that is armed.
- 10 seconds after the arming beep, shock & motion sensors work independently to determine if your bike is being attacked.

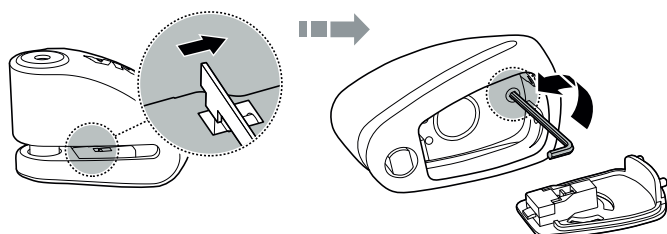
**!** **WARNING: XENA 120dB alarms are extremely loud!**  
Avoid close proximity to unprotected ears.

### Changing the battery (fig.B & fig.C)

- Locate spring-loaded catch inside disc slot (see fig.B).
- Using end of key tool, depress catch; release and remove lid.
- Loosen and remove screw in module base-plate.
- Locate clear plastic tab on module and lift to remove from lock body.
- Remove battery door (marked "CR2 BATTERY").
- Remove used battery and discard responsibly\*.
- Ensure + and - contacts are properly aligned
- Insert fresh CR2 battery.
- Carefully replace module in lock body.
- Replace and tighten screw in module base-plate.
- Reattach cover (the key tool comes in handy to depress spring-loaded catch).

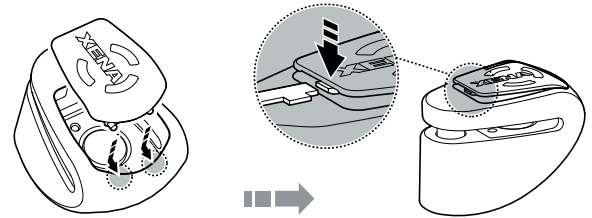
NOTE: When alarm module is removed from the lock body, alarm will activate. To avoid this, insert module into lock body and replace lid immediately after inserting the battery.

### B. To open lid and remove module



\*Lithium batteries are best disposed of as a non-hazardous waste when fully or mostly discharged. DO NOT INCINERATE or subject battery cells to temperatures in excess of 212°F.

### C. To replace the lid



### Battery life

- Batteries should last 6 to 8 months with normal use. Frequent triggering or extreme temperatures can shorten battery life.

### Keys

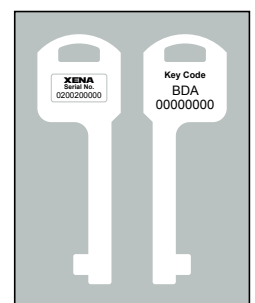
- Each XX15 Series lock comes with three keys and a flat key-tool etched with a unique code number (ie, HAB123456) and serial number (ie, 1234567890) for ordering replacement keys. Make a note of your key code and store safely.

### Register your XENA lock

On the key-shaped metal tool provided (fig.D), you'll find your lock's two unique ID numbers:

1. Serial number, and
2. Key code.

### D.



### Caring for your lock

- Use a dry cloth to keep the LED reflector plate inside the disc-slot clean and free of dirt, dust and grease. An obstructed reflector plate can affect performance and may cause the lock to arm when not on the brake disc.
- We recommend applying a lock lubricant to the lock barrel every six months.

### If alarm is damaged

- The removable alarm module can be replaced with a new unit from your local authorised XENA dealer.
- Note: the lock remains effective with or without the alarm system.

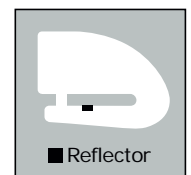
### Transporting your disc-lock

- Ideally you should carry your XENA underneath the seat of your bike.
- CAUTION: Do not carry your XENA in or attach it to your clothing, as this may contribute to injury in the event of an accident.

### Troubleshooting

- Alarm not arming: Check battery, ensure reflector (fig.E) is obstructed by motorcycle disc. Confirm sensors are active (see below).
- Constant clicking or low beeping sound: replace batteries.
- Alarm too sensitive: Place at 6 o'clock on disk.
- Alarm not sensitive enough: Place at 12 o'clock to 3 o'clock on disc.
- Alarm won't disarm: Clean sensor and reflector.

### E.



### !

### Important: How to "Wake Up" your XENA disc-lock alarm

- To avoid draining the battery when not in use, your XENA disc-lock alarm has a dormant power mode. Usually metal-on-metal contact from locking the lock onto your brake-disc is sufficient and the unit will arm normally.
- It may be necessary to wake up the arming sensor by firmly locking and unlocking the key barrel once or twice.

### XX15 accessories

- XCA15 Chain Adaptor
- XENA Ground Anchor
- XENA XC, XCH and XCL Chains
- XLP2 Lock Pouch

### Disclaimer:

Our products are sold as security enhancements, and are not a substitute for the end-user's duties of normal care and attention. As such, XENA Security accepts no responsibility or liability for any direct or consequential loss, damage or injury arising or resulting from the use or misuse of our products howsoever arising, save that we will always replace any product found to be defective within the warranty period.