

# RS582 INSTRUCTIONS

TO BE INSTALLED BY A CERTIFIED MECHANIC ONLY | FOR RACE USE ONLY

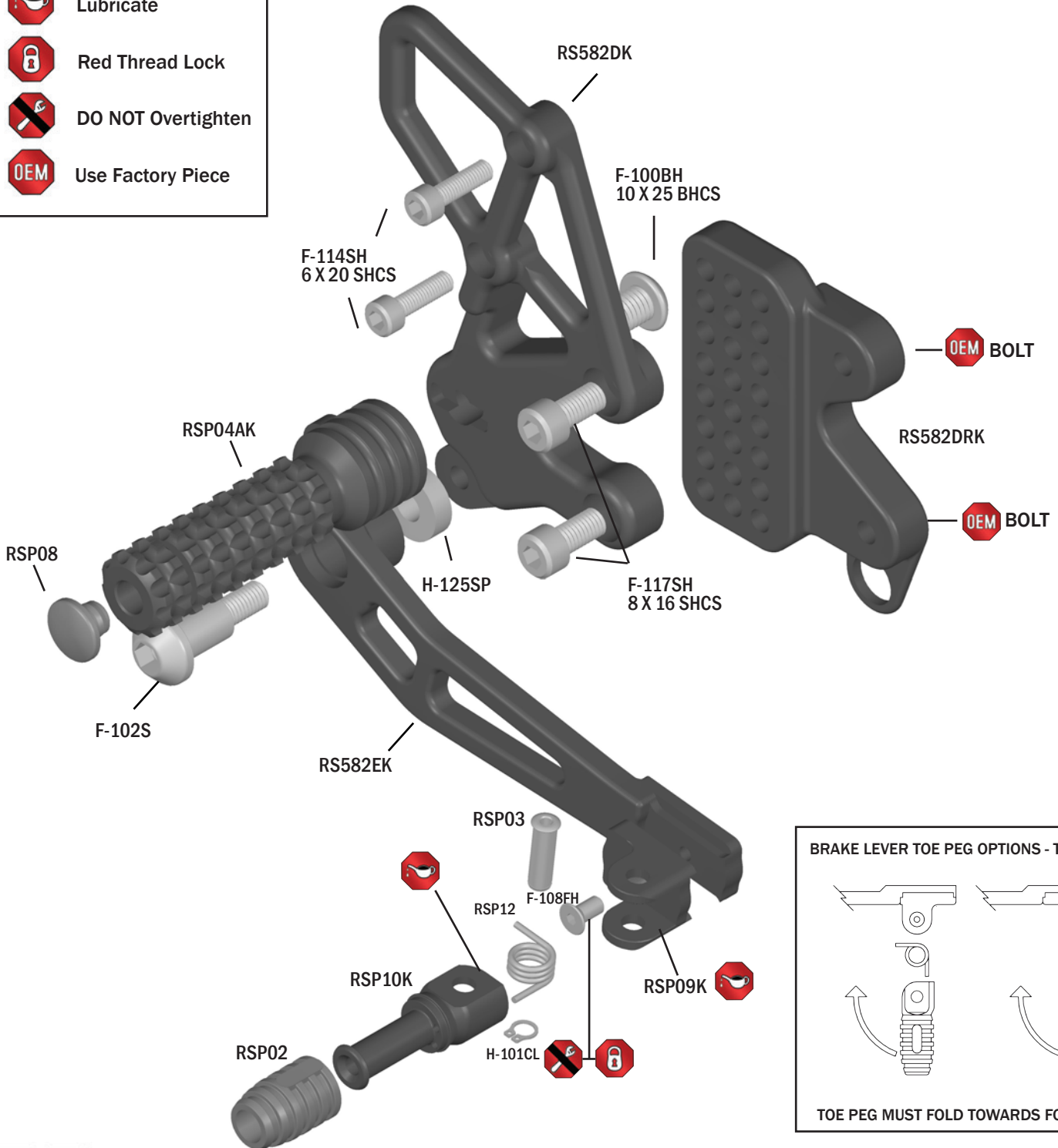
## BRAKE SIDE EXPLODED VIEW

FOR: SUZUKI GSXR600 & 750 2011

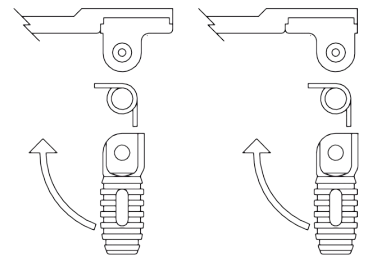


### INDEX

-  Lubricate
-  Red Thread Lock
-  DO NOT Overtighten
-  Use Factory Piece



### BRAKE LEVER TOE PEG OPTIONS - TOP VIEW



TOE PEG MUST FOLD TOWARDS FOOT PEG

### BRAKE LIGHT INFO:

These rearsets do not use: OEM rear brake light switch, spring & lever return spring. In race form these rear sets no longer activate rear brake light from rear brake lever. Street use requires rear brake light to be activated by rear & front brake levers. To achieve rear brake light activation from rear brake lever use Vortex in-line pressure switch RS100.

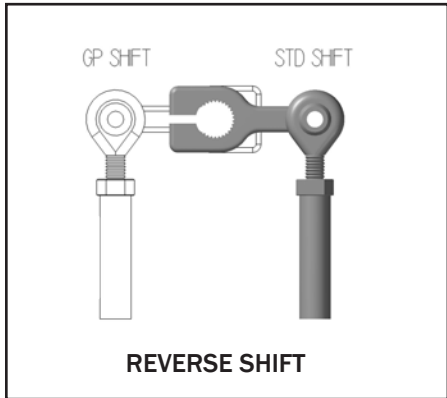


# RS582 INSTRUCTIONS

TO BE INSTALLED BY A CERTIFIED MECHANIC ONLY | FOR RACE USE ONLY

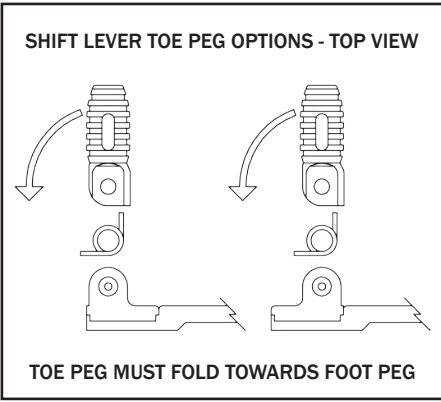
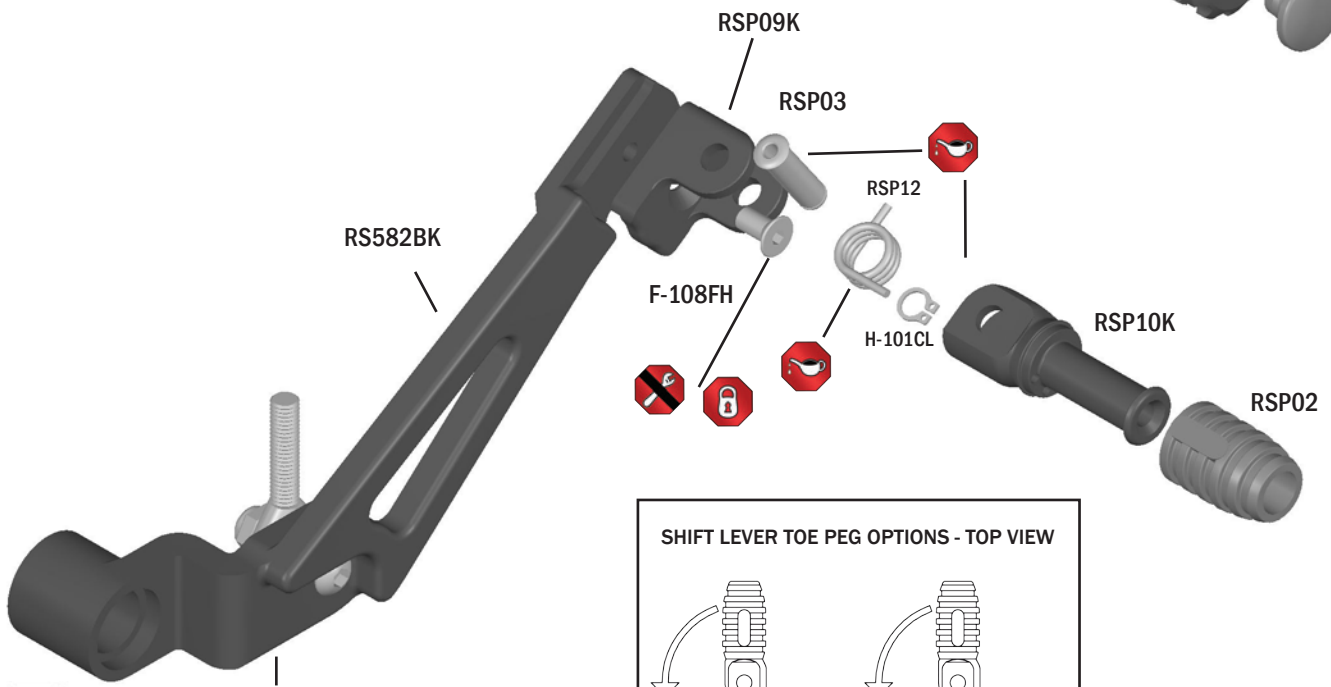
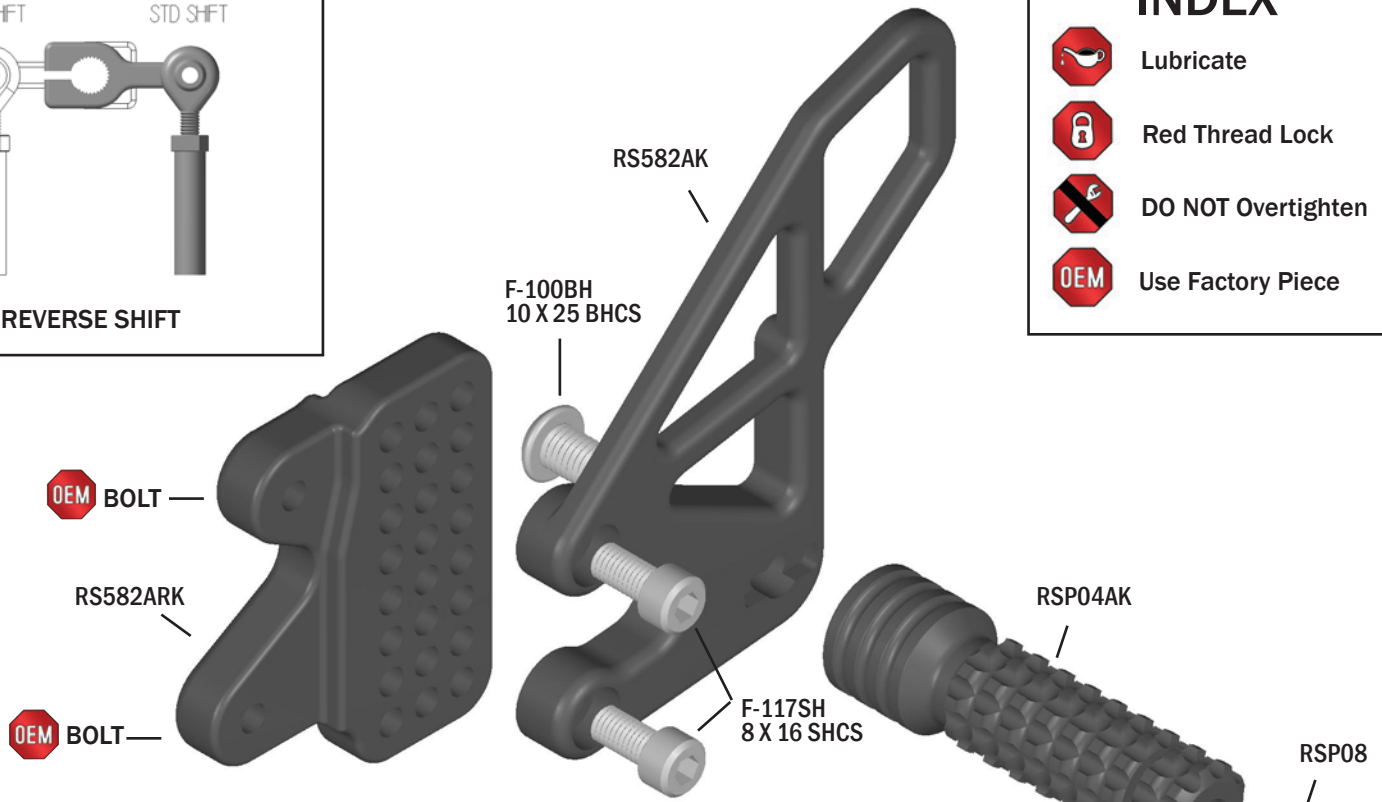
## SHIFT SIDE EXPLODED VIEW

FOR: SUZUKI GSXR600 & 750 2011



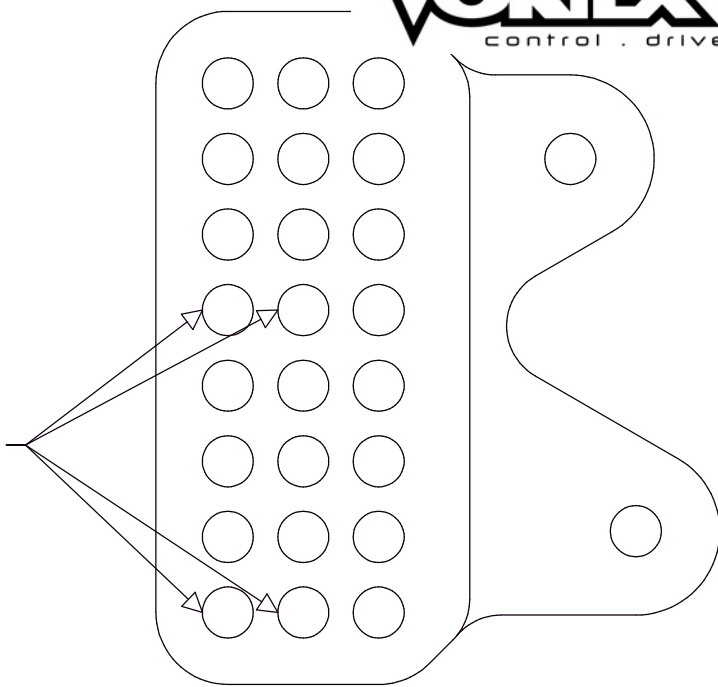
### INDEX

-  Lubricate
-  Red Thread Lock
-  DO NOT Overtighten
-  Use Factory Piece

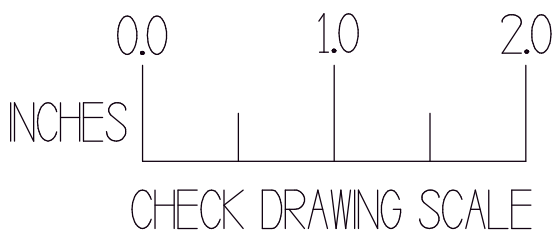
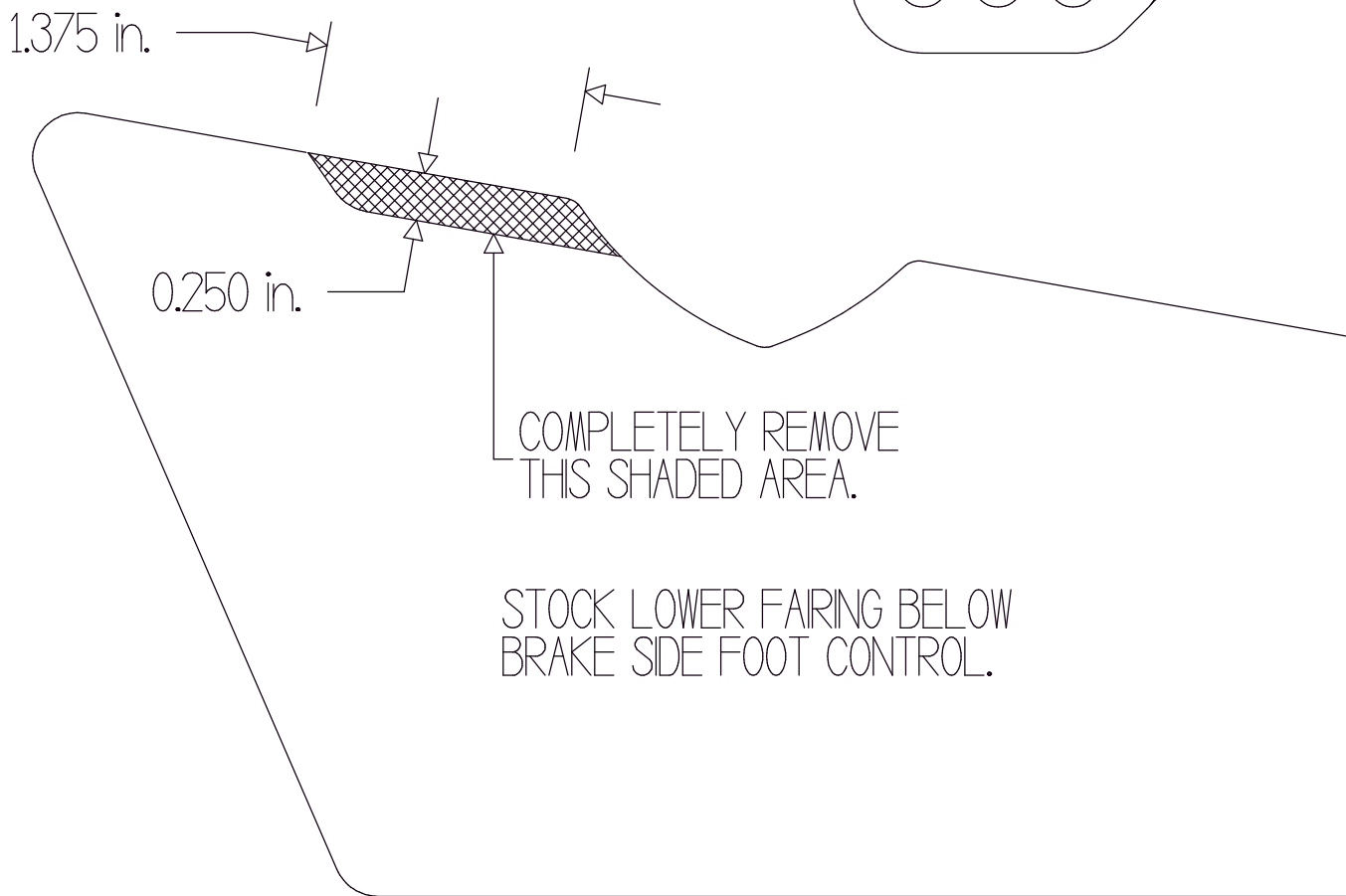


# RS582 INSTRUCTIONS

TO BE INSTALLED BY A CERTIFIED MECHANIC ONLY  
FOR RACE USE ONLY



WHEN USING EITHER OF THESE TWO MOUNTING POSITIONS TRIM AWAY LOWER FAIRING AS SHOWN BELOW.



<b>VORTEX</b>	
PART NAME : RS582 BRAKE SIDE BODY MOD	
DATE : 3-23-2011	SCALE : 1 : 1
DRAWN BY : S. AVOY	DO NOT SHRINK

# RS582 INSTRUCTIONS

TO BE INSTALLED BY A CERTIFIED MECHANIC ONLY | FOR RACE USE ONLY

## BRAKE SIDE EXPLODED VIEW

FOR: SUZUKI GSXR600 & 750 2011-2012 ADJUSTABLE



### INDEX



Lubricate



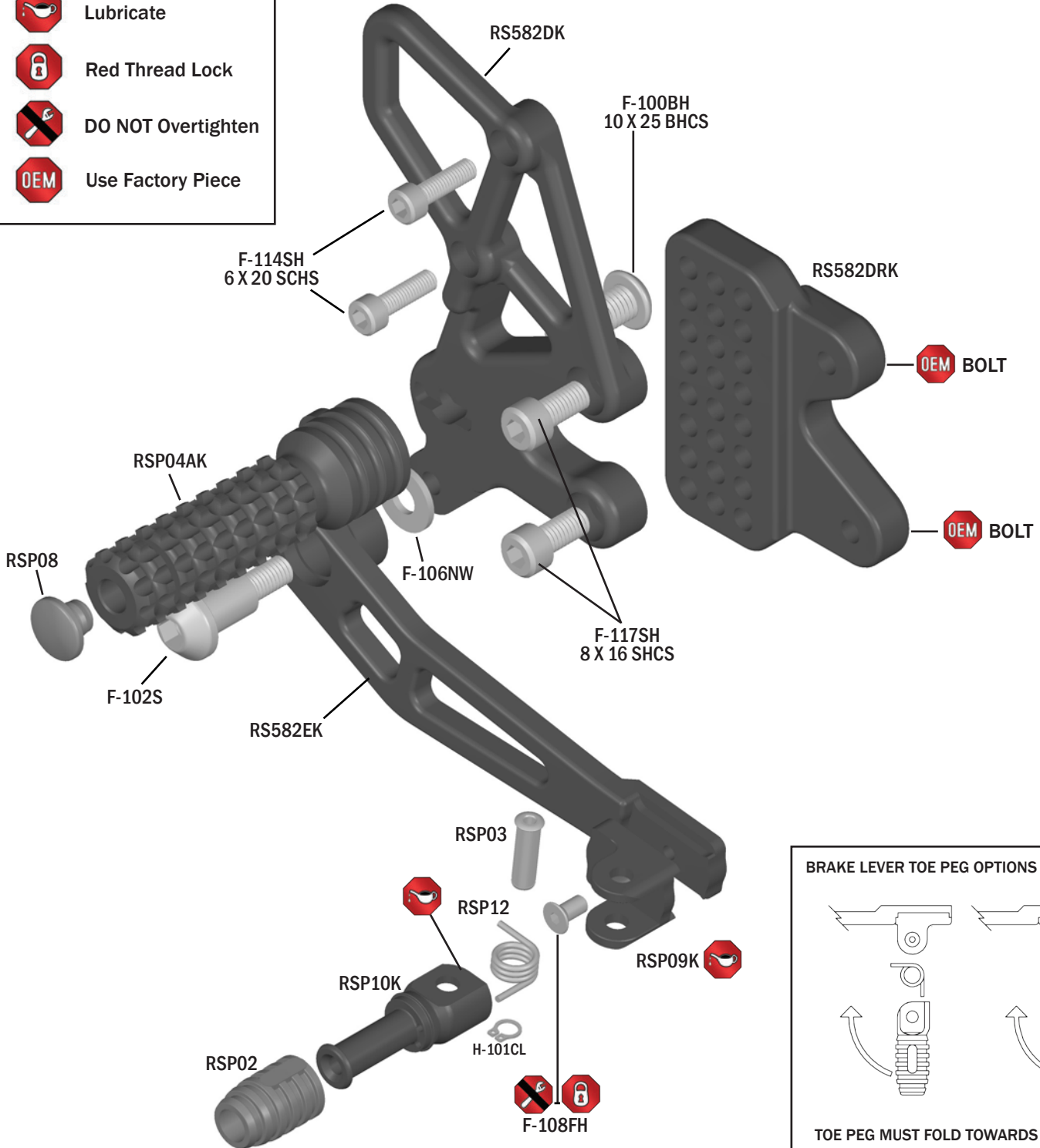
Red Thread Lock



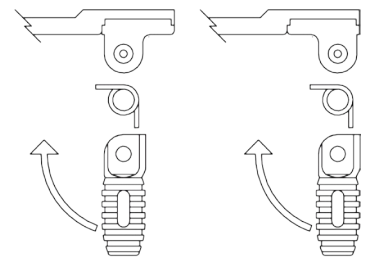
DO NOT Overtighten



Use Factory Piece



### BRAKE LEVER TOE PEG OPTIONS - TOP VIEW



TOE PEG MUST FOLD TOWARDS FOOT PEG

### BRAKE LIGHT INFO:

These rearsets do not use: OEM rear brake light switch, spring & lever return spring. In race form these rear sets no longer activate rear brake light from rear brake lever. Street use requires rear brake light to be activated by rear & front brake levers. To achieve rear brake light activation from rear brake lever use Vortex in-line pressure switch RS100.

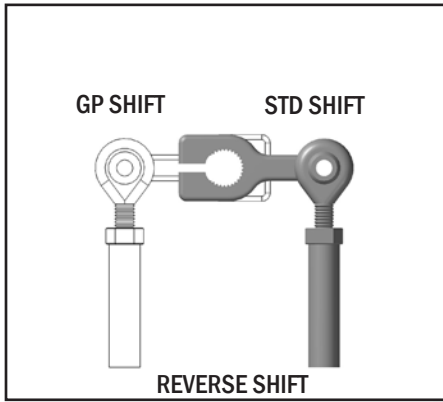


# RS582 INSTRUCTIONS

TO BE INSTALLED BY A CERTIFIED MECHANIC ONLY | FOR RACE USE ONLY

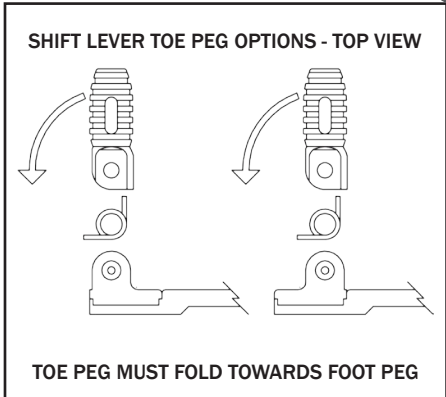
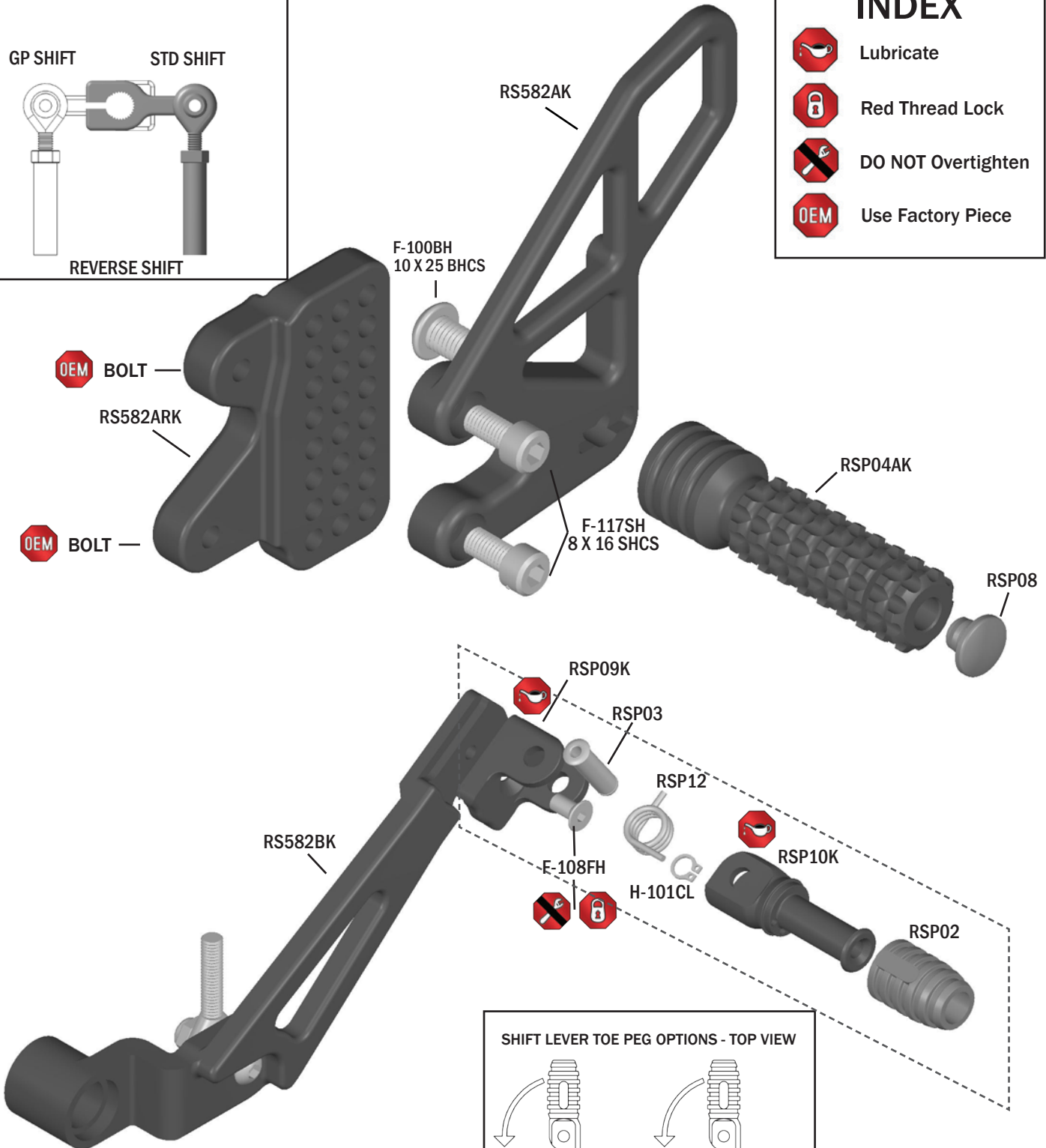
## SHIFT SIDE EXPLODED VIEW

FOR: SUZUKI GSXR600 & 750 2011-2012 ADJUSTABLE



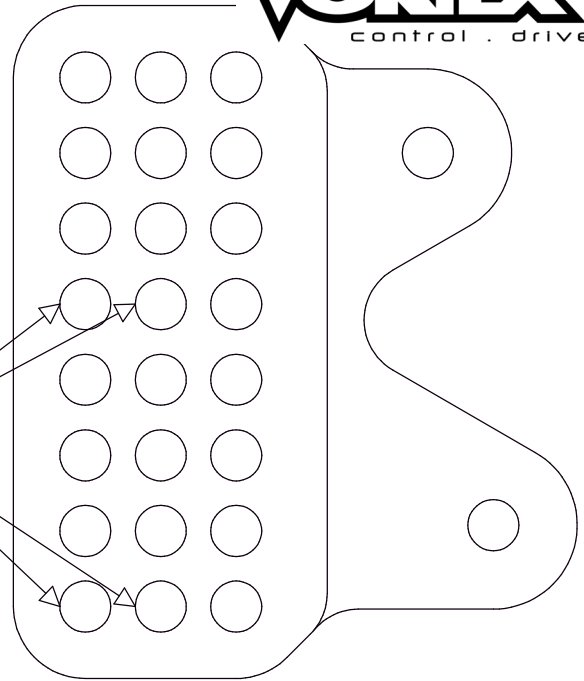
### INDEX

- Lubricate
- Red Thread Lock
- DO NOT Overtighten
- Use Factory Piece

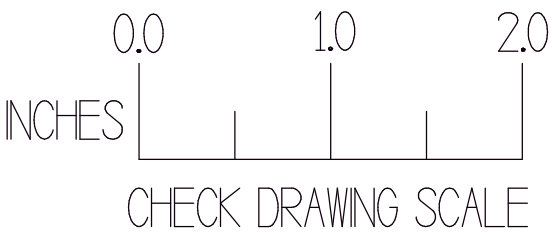
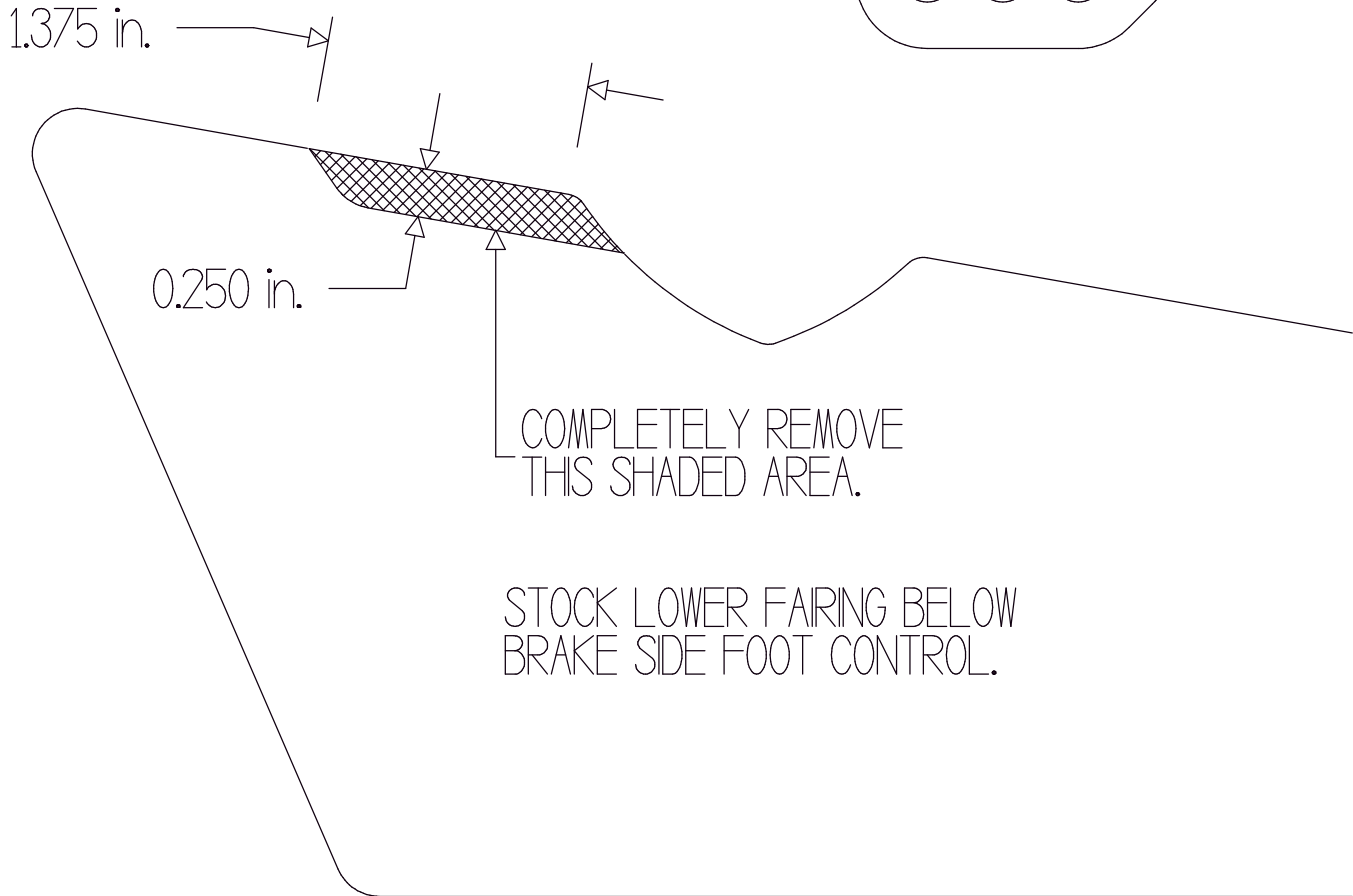


# RS582 INSTRUCTIONS

TO BE INSTALLED BY A CERTIFIED MECHANIC ONLY | FOR RACE USE ONLY



WHEN USING EITHER OF THESE TWO MOUNTING POSITIONS TRIM AWAY LOWER FAIRING AS SHOWN BELOW.



<b>VORTEX</b>	
PART NAME : RS582 BRAKE SIDE BODY MOD	
DATE : 3-23-2011	SCALE : 1 : 1
DRAWN BY : S. AVOY	DO NOT SHRINK