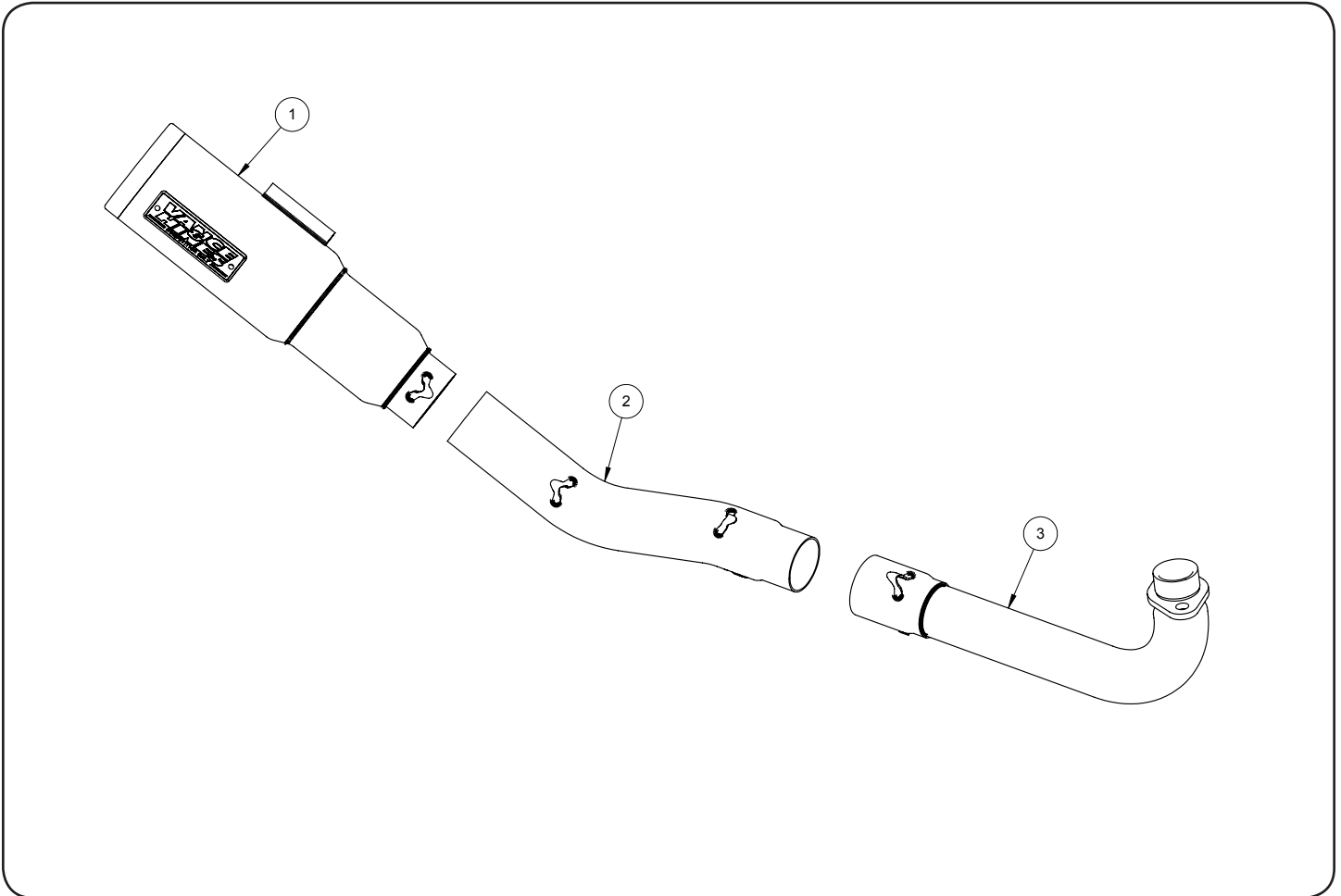


Congratulations, you have purchased the finest exhaust system available for your motorcycle. Your Vance & Hines exhaust is designed and crafted for performance, quality, and style.

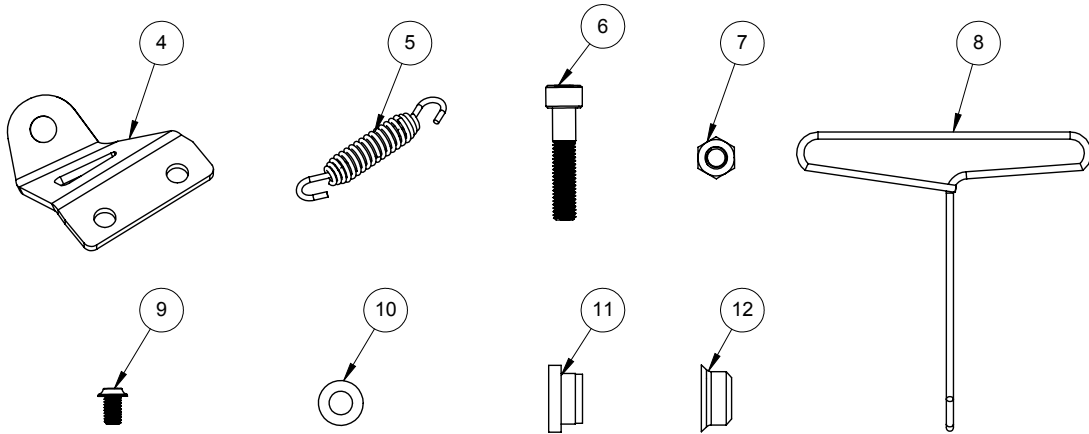
FOR CLOSED COURSE COMPETITION USE ONLY. NOT INTENDED FOR STREET USE.



PARTS LIST

PART NO.	Description	Qty.	PART NO.	Description	Qty.		
1	H675RB-S	Muffler Assembly	1	7	A170HW	Nut Hex M8 X 1.25	3
2	H674RB	Mid-Pipe Assembly	1	8	A260SP	Spring Puller	1
3	H173FB	Header Assembly	1	9	A544HW	M6X1X10 Screw	2
4	1175	Mount Bracket	1	10	A616HW	M8 Flat Washer	1
5	A115SP	Dirt Sport Spring	4	11	A712ST	Mount Spacer	2
6	A452HW	M8X1.25X40mm SHCS	1	12	A713ST	M8 SHCS Cover	1

HARDWARE



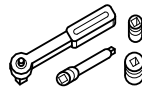
TOOLS REQUIRED



Wrenches: 12mm, 13 mm



Allen Wrench: 4mm, 6mm



Sockets: 12mm

STOCK SYSTEM REMOVAL

1. Remove the two cylinder exhaust port nuts from head pipe, located at the cylinder head.
2. Remove the exhaust chassis mount bolt.
3. Remove the muffler mount bolt.
4. Remove the complete exhaust system and set aside (assistance may be required).
5. Remove the rubber grommet from stock muffler mount.
6. Check the condition of exhaust gaskets and replace if worn or damaged.

VANCE & HINES SYSTEM INSTALLATION

1. Install header using supplied M8 nuts (A170HW). Do not fully tighten at this time.
2. Slip midpipe (H674RB) onto header (H173FB). Align the spring clips.
3. Attach bracket (1175) to muffler (H675RB-S) with the two M6 screws (A544HW). Fully tighten bracket to muffler. Be sure to align mounting bracket with muffler tent bracket.
4. Slip muffler (H675RB-S) onto midpipe (H674RB).
5. Attach muffler with bracket (1175) to muffler mount (**Figure 1**).
 - a. Insert bracket spacers (A712ST) in-between the bracket and muffler mount.
 - b. Insert M8 socket head screw (A452HW) into M8 socket head cover (A713ST).
 - c. Install muffler assembly using washer (A616HW) and one M8 nut (A170HW).
 - d. Do not fully tighten at this time.
6. Tighten cylinder exhaust port nuts evenly.
7. Tighten muffler mounting screw.
8. Attach exhaust springs (A115SP) using supplied spring puller.

VANCE & HINES SYSTEM INSTALLATION

1. When installing new stainless steel make sure your hands are clean and free of oil. After installation, thoroughly clean pipes and mufflers with a soft cloth and cleaning solvent that will leave no residue (acetone, glass cleaner, alcohol, etc...) before starting the motorcycle.
2. It is considered normal for stainless steel exhaust systems to discolor due to heat.
3. High performance engine tuning utilizing a dyno will likely result in severe discoloration.
4. Avoid long periods of idling as this can cause discoloration. Intake leaks can cause the engine to run lean and overheat, this could lead to discoloration.

FIGURE 1

