



2019+ HONDA CRF110F

M-6 Full-System Part # 005-5190104M



BILL OF MATERIALS

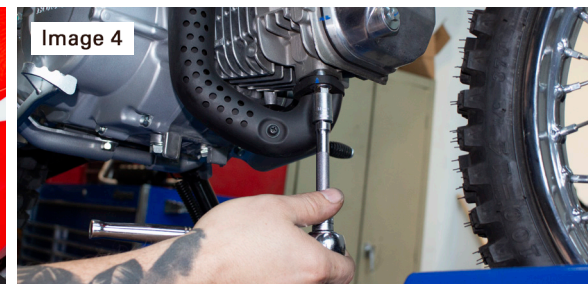
1	M-6 Muffler	Varies
1	CRF110F Header Pipe	005-51901HV2
1	Spark Arrestor (pre-installed)	005-107S

INSTALLATION INSTRUCTIONS

1. Make sure the motorcycle is completely cool before installation, and make sure it is secure on a stand or service lift.
2. Remove OEM side panel bolt and set aside, you will reinstall this later. **(Reference image 1)**



3. Remove OEM side panel.
4. Remove OEM upper and lower muffler bolt and set aside, you will reinstall these later. **(Reference image 2 & 3)**
5. Remove OEM header pipe manifold bolts and set aside, you will reinstall these later. **(Reference image 4)**



6. Now remove the entire OEM exhaust assembly. **(Reference image 5)**
7. Loosely install your new TBR header pipe reusing the OEM header flange nuts. **(Reference image 6)**



8. Install muffler to the OEM mounting point and TBR header pipe using OEM muffler bolt. **(Reference image 7 & 8)**

IMPORTANT - PLEASE READ CAREFULLY: We recommend that this performance part be installed by a qualified motorcycle technician. If you have any doubts as to your ability to install this performance part, please consult with your local motorcycle dealer. Read all instructions first before starting installation. Make sure the motorcycle and exhaust system are completely cool before starting the installation. Also, make sure the bike is secure on a center stand or ideally a service lift during installation. Be sure to save all stock components for possible use later.

WARRANTY: Two Brothers Racing products are intended for closed course competition purposes only, and therefore are sold "as is" without warranty. Two Brothers Racing specifically disclaims any warranties of merchantability or fitness for a particular purpose and disclaims all responsibility for consequential and incidental damages or any other losses arising from the use of these products or parts.



9. Check to make sure everything is in the desired position and tighten down the header pipe flange nuts and muffler clamp bolts to OEM torque specs.

10. Reinstall OEM side panel using the OEM bolt. (Reference image 10)



11. Double check your work to make sure everything is secure.

12. Before you run the bike, clean off all fingerprints and dirt, as any oily residue will etch the metal and become somewhat permanent when the system gets hot. Run the bike and enjoy. It is normal for some white smoke to appear the first time you start the bike. This is packing/manufacturing oil from inside the pipe burning off. Check for gaps or leaks. If you find a leak, a little high temperature silicon sealant should fix it. After 50 to 100 miles, recheck all fasteners for tightness.

Care & Cleaning

Keep system free of dirt and moisture. Store in a cool, dry place. Make sure vehicle is completely cool before maintenance.

Stainless Header System: Polished stainless steel pipes will turn a light golden hue after a few heat cycles, this is a normal characteristic of high quality stainless steel. Clean using a mild water based spray cleaner. Always apply cleaner or polish with a soft, clean cloth.

Titanium Header System: Polished titanium pipes will experience color shift ranging from deep blue/purple through amber after a few heat cycles. This is a normal characteristic of high quality titanium. Clean using a mild water based spray cleaner. Always apply cleaner or polish with a soft, clean cloth.

Polished Aluminum Canisters: Use an aluminum or mag wheel polish to restore the bright finish to factory spec.

Brushed Aluminum Canisters: Clean using a mild water based spray cleaner. Always apply cleaner or polish with a soft, clean cloth.

Carbon Fiber Canisters: Clean using a mild water based spray cleaner. Always apply cleaner or polish with a soft, clean cloth. Always make sure the fiberglass packing inside is in good condition and not burned out, as exhaust heat inside an empty canister will deteriorate the carbon fiber sleeve. TBR sells repack kits (Road - #005-10038, Offroad - #005-10038MX) that include everything you need to easily do it yourself.

Titanium Mufflers: For cleaning use a mild water based spray cleaner. Always apply cleaner or polish with a soft, clean cloth. Always make sure the fiberglass packing inside is in good condition and not burned out, as exhaust heat inside an empty canister will deteriorate the carbon fiber sleeve.

TBR sells repack kits (Road - #005-10038, Offroad - #005-10038MX) that include everything you need to easily do it yourself.

Repack all road canisters at the first signs of packing material deterioration. Part #005-10038

Repack all offroad canisters after every 10 hours of use. Part #005-10038MX

NEVER dyno test your bike with carbon fiber or titanium canisters installed - the intense heat and lack of cooling air can quickly burn through the canister material. Two Brothers Racing does not provide a warranty for burned canisters.

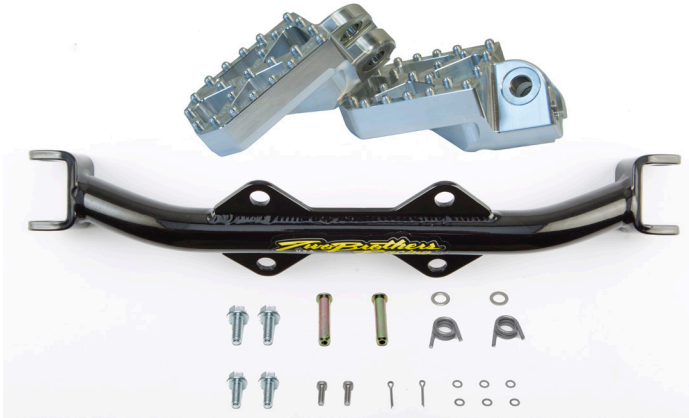


BILL OF MATERIALS

1	M-6 Muffler	Varies
1	CRF110F Header Pipe	005-51901HV2
1	Spark Arrestor (pre-installed)	005-107S



Two Brothers Racing
Heavy Duty Billet Aluminum Footpegs Kit
 Part # 024-8-02



Parts List

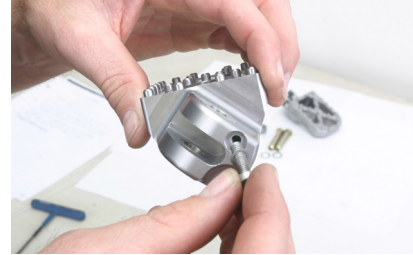
Qty.	Description	Part Number
1	Billet Aluminum Peg Set (left & right)	024-8-29M
2	Peg Springs	022-8-29S
2	M5x12 Low Profile Socket Head Cap Screws	005-LSH512
2	3/32" x 3/4" Cotter Pin	005-CP33234
2	10mm Washers	005-WF10-AN
6	5mm Flat Washers	005-WF5-AN
1	Peg Bar	024-8-02B
4	8x20mm Flange Bolt	005-FB820
2	Footpeg Pin	022-8-02P

IMPORTANT - PLEASE READ CAREFULLY

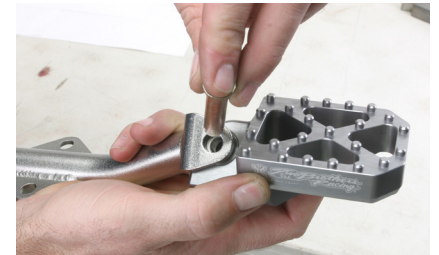
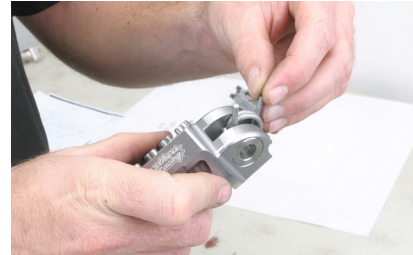
We recommend that this performance part be installed by a qualified motorcycle technician. If you have any doubts as to your ability to install this performance part, please consult with your local motorcycle dealer. Read all instructions first before starting installation. Make sure the vehicle and exhaust system are completely cool before starting the installation. Also, make sure the vehicle is secure on a centerstand or ideally a service lift during installation. Be sure to save all stock components for possible use later.

Installation Instructions

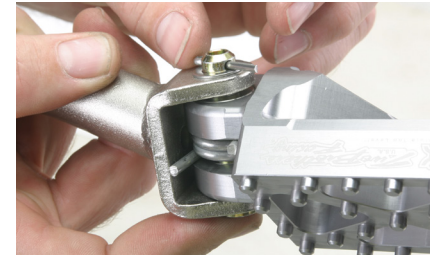
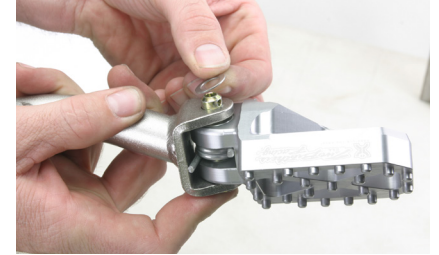
1. Secure motorcycle on centerstand or service lift.
2. Note: Footpegs are marked "L" and "R" for the left and right sides.
3. Use the M5x16 socket head cap screws with small washers for peg height adjustment. Add or subtract the number of washers for height changes. Use threadlock.



4. Install pins and springs. These are the same for each side.



5. Install washer (inside or outside of mount depending on application), pin and cotter pin.



6. Bend the cotter pin tabs to secure them from coming off.