

IGNITION COILS

Twin Power coils are high-quality direct fit with at least 20% more voltage than stock.

High-quality, molded-epoxy coils for 12-Volt H-D® ignition systems increases peak spark voltage by 20% or more! In a late O.E.M.-style molded case, these ignition coils improve starting, stops high-speed misfires, increases mileage and overall performance. They are available in black and chrome, and come with a one-year manufacturer's warranty.



210546



210538



210539



210073



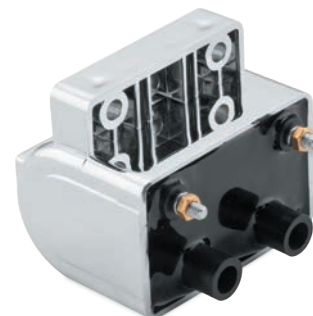
491479



210529



210074



210537

HARLEY-DAVIDSON

	Year	Ohm	O.E.M.	Color	P/N
EFI Big Twin	07-15	0	31696-07A	Black	210546
EFI Big Twins, Single Fire	02-06	0	31743-01	Black	210538
Carb Big Twins (exc. 99-01 FLHT)	99-06	1	31655-99	Black	210073
Big Twin with Single Fire Ignition Dual Coil Output	80-99	3.0		Black	210074
Big Twin (exc. Fuel Injected & 1999 Twin Cam)	85-99	3.0	31614-83A	Black	210527
Big Twin (exc. Fuel Injected & 1999 Twin Cam)	85-99	3.0	31614-83A	Chrome	210537
Sportster	07-15	0	31656-07	Black	210539
Carb Sportster, Single Fire	04-06	1	31655-99	Black	210073
Sportster (ex 98-03 1200S FI), Dual Fire	85-03	3.0	31614-83A	Black	210527
Sportster	85-01	3.0		Black	210069
Sportster (exc. 98-03 1200S), Dual Fire	85-03	3.0	31614-83A	Chrome	210537
Sportster, Big Twin, Dual Fire	80-84	4.0	31609-80	Black	210528
Sportster, Big Twin, Dual Fire	80-84	4.0	31609-80	Chrome	210536
Sportster, Big Twin, Dual Fire	65-79	5.0	31609-65A	Black	210529
Sportster, Big Twin, Dual Fire	65-79	5.0	31609-65A	Chrome	210535

INDIAN

All (Exc. Scout)	12-16				491479
------------------	-------	--	--	--	---------------

Feel the difference with Twin Power.

Discover other motorcycle ignition system parts on our website.