



Trilobite® Premium Aramid Fashion is pleased to introduce its 2019 collection designed for passionate motorcyclists. Motorcycling is more than getting on a bike, riding and reaching the destination. The joy of motorcycling is enjoying the ride, the camaraderie, and your own unique style. Express yourself when you ride. Enjoy your lifestyle with the latest in motorcycle apparel technologies, comfort, safety and design.

Trilobite's approach to its collection touches on select, passionate segments of motorcycling. Whether you are a rider that likes a classic design, or a more complex and technical style, Trilobite has a product for you.

Trilobite has the rider covered head to toe. Of particular focus is the pants and the many styles, materials and fits that are sure to satisfy every rider, man or woman, no matter what type of bike or riding they enjoy.

Wearing Trilobite means being different, just like our products are different from others available on the market. Enjoy the ride, identify yourself with the lifestyle, and wear Trilobite Premium Aramid Fashion!

We have been passionately creating motorcycling apparel since 2012... **Trilobite**



**RIDE in STYLE**  
**RIDE SAFE**  
WEAR TRILOBITE PREMIUM ARAMID FASHION !



**DYNEEMA®**

**MATERIAL**

**TOUGH, TOUGHER, THE TOUGHEST**

Dyneema® Denim is a majority mix of Polyethylene fiber with Cotton. Dyneema® yarn is based on a Ultra High Molecular Weight Polyethylene (UHMWPE) which is manufactured using a special spinning process resulting in a fiber that has an extreme high crystallinity with following properties:

#### **Extreme high tensile strength**

Depending on the Dyneema® content in the denim, it is extremely difficult to tear or break the fabric. It is claimed to be 15 times as strong as steel.

#### **High cut resistance**

Denim that contains more than 5 - 10% Dyneema® will have noticeably higher cut resistance compared to regular fabrics.

#### **Abrasion resistance**

Using half the amount of Dyneema® improves the abrasion resistance of a single-layer motorcycle denim with aramid by 70%. The like-for-like improvement is 300%.

#### **Chemically inert**

Even though Dyneema® itself is chemically inert and therefore resists almost all types of chemicals, it is not recommended to bleach, nor dry-clean denim with Dyneema® to prevent quality issues related to the Cotton fiber in the denim.

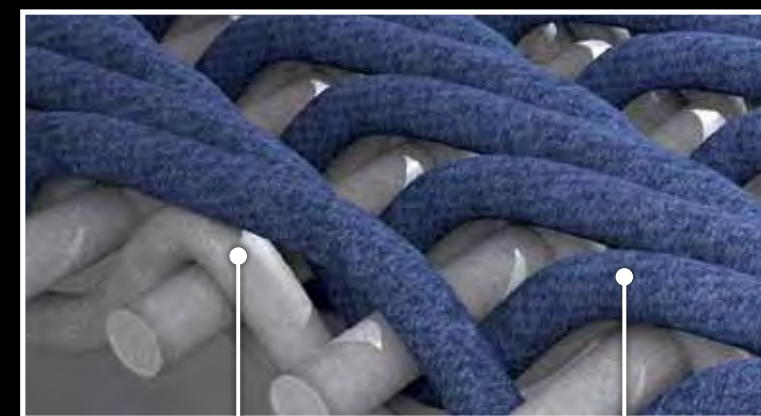
#### **Heat sensitive**

Dyneema® has a melting temperature of 140 - 144°C and therefore any exposure to temperatures higher than 130°C, even for short periods (seconds) should be avoided. Hence the recommendation to iron at max 110°C / 230°F and tumble dry at low temperatures.

UHMWPE is odorless, tasteless, and non-toxic, therefore it is widely used in all kinds of industries - bulletproof vests, cut resistant gloves, mooring oil rigs in harbor, fishing nets, biomedical use in orthopedic and cardiovascular implants, and sports equipment.



**only 0,8 mm thick**



**UHMWPE**

**DENIM**

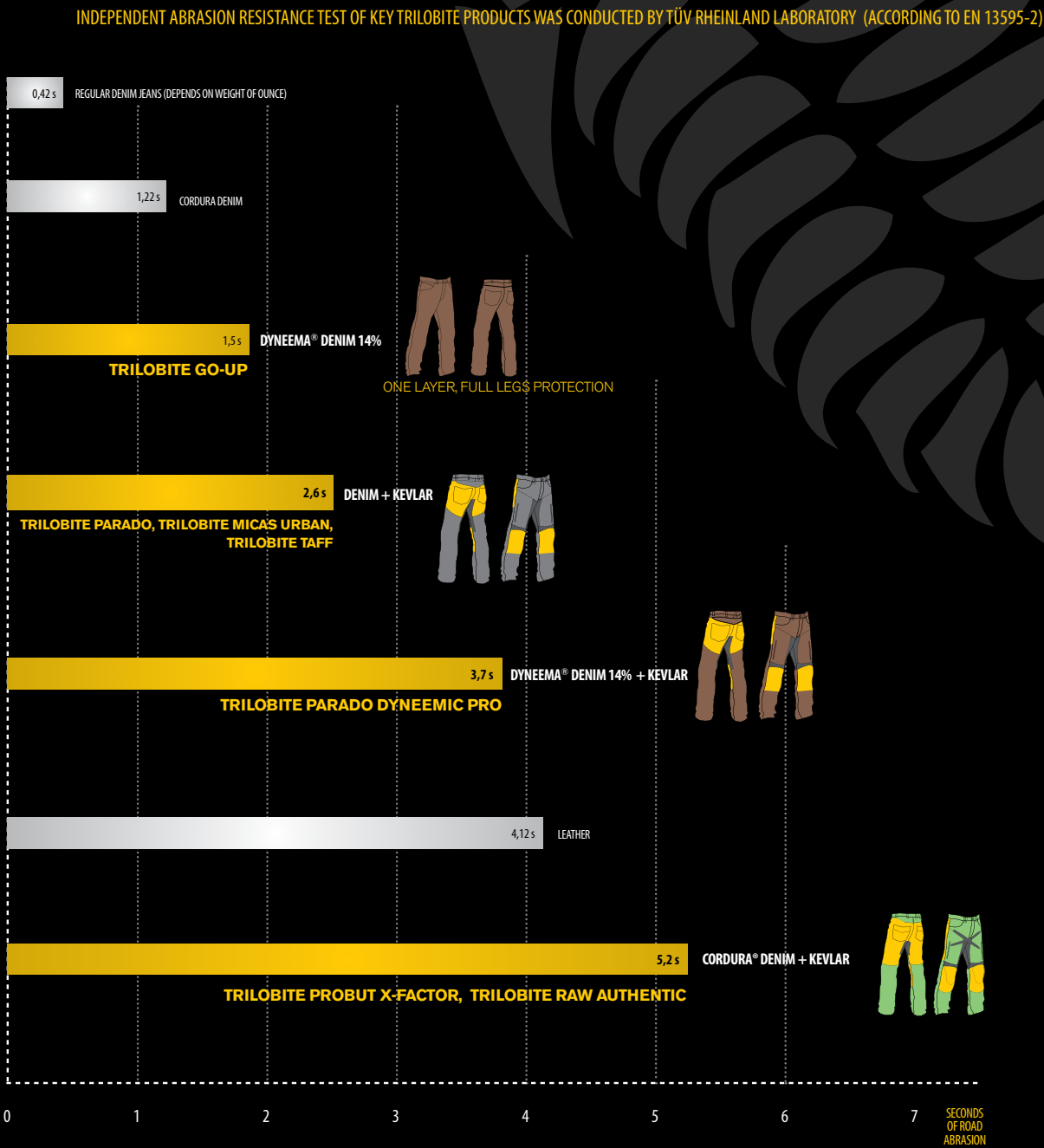
ultra • high • molecular •  
weight • polyethylene

#### **Trilobite uses two different compositions:**

1) UHMWPE 14% + denim for Go-Up product and Parado Dyneemic Pro

# TRILOBITE JEANS ABRASION RESISTANCE INDEX

MATERIAL ABRASION RESISTANCE COMPARISON  
ACCORDING TO EN 13595-2 (in seconds)



## MATERIALS



## TRILOBITE JEANS & PANTS FITTING



**Straight fit**

Parado jeans  
Taff pants  
Probut X-Factor



**Regular fit**

Go-Up



**Skinny fit**

Leggings  
Micas Urban ladies



**Slim fit**

Micas Urban men





RAW AUTHENTIC

NATURAL BLUE  
OF CORDURA  
RAW DENIM



**NATURAL BLUE**  
TRI-CRA-NBDM-3032 Size 30-32  
TRI-CRA-NBDM-3232 Size 32-32  
TRI-CRA-NBDM-3432 Size 34-32  
TRI-CRA-NBDM-3632 Size 36-32  
TRI-CRA-NBDM-3832 Size 38-32

Raw authentic is a classic looking pair of jeans with modern technologies inside made in the original way as it used to be at the very beginning of the jeans era. Non-washed, not pre-shrunk. With Raw Authentic jeans you are getting a pair of real raw denim jeans. Their pure design respects the original denim pants look. It gives the wearer great options for customization depending on the way of using these pants. Riders give these jeans their personal touch, no other pair of jeans is as customizable as Raw Authentic. They will pick up the natural wear patterns over the course of time.

Technically, Raw Authentic jeans meet safety expectations of demanding riders. Cordura® denim itself is an abrasion resistant material which makes the jeans abrasion resistant all over the surface. In critical zones (knees and hips) these jeans have an aramid fiber lining to boost up abrasion resistance. Impact safety is ensured in knees and hips with Trilobite® Premium Protection CE Level 2. Inside Cordura® denim the Coolmax® fiber is integrated. This creates a moisture outlet system that takes the humidity away from the body to the upper layer and keeps the rider cool when needed.

With a pair of Raw Authentic jeans you will be a hi-tech vintage rider.

SPECIFICATION

**Outer material:**  
12.5 oz Cordura® denim raw with Coolmax® fibers inside

**Outer shell lining:**  
Aramid fiber lining in knees and seat made with Kevlar® by progressive DuPont™ technology

**Protection:**  
Trilobite® Premium Protection CE Level 2 on hips and knees  
Aramid fiber lining in knees and seat made with Kevlar® by DuPont™ Triple stitching

**Ergonomic features:**  
Adjustable height of knee protectors  
Raised waist belt at the back  
Rolled up pant legs  
4 pockets

**Ventilation:**  
Coolmax® fiber inside creates and moisture outlet system

**Fit:**  
Custom ride, vintage bikes, regular men's sizes (30 – 38). Straight fit. Perfectly matches with Timber and Distinct shirts.

Kevlar® and DuPont™ are trademarks or registered trademarks of E.I. du Pont de Nemours and Company.

FEATURES



MATERIALS



Aramid fibres lining  
Raw Cordura® denim

HOW TO TREAT YOUR TRILOBITE  
RAW AUTHENTIC DENIM JEANS

RULE#1

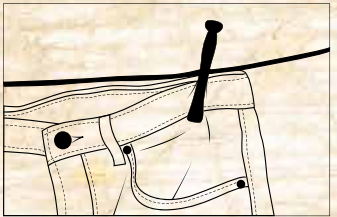
DO NOT WASH THE JEANS  
BUT SOAK THEM!

If you wash your raw denim jeans too soon, you risk ruining of your fade, as well as any future fading. Premature washing will eventually make it twice as hard to get the perfect creasing. Soaking the jeans in warm to hot water for a couple of hours will shrink the jeans to their natural state, so you get a better idea of where the real hem length will fall. It will also remove some of the excess indigo dye, thus jeans are not leaving blue stains.

The hotter the water you soak the jeans in, the more they will shrink.



RULE#2 DO NOT FOLD THE JEANS, JUST HANG THEM TO DRY!



Use clothespins, pants hangers, or binder clips. Do not fold them or you will make extra creases.



WHAT IS RAW DENIM?

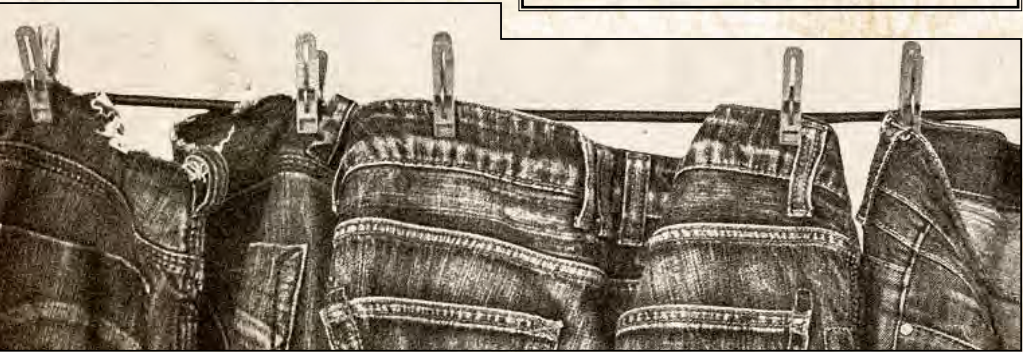
Raw denim is unwashed denim, straight off the roll, straight from the denim mill. It is denim that has not undergone any of the usual washing and distressing processes to soften up the fabric and reduce shrinkage.

Up until the early 1970s, all jeans were made of raw denim and it was up to the consumer to break them in. Many people would sit in a bathtub or go swimming in their jeans to shrink the pants to their body.

Raw jeans pick up the natural wear patterns, fades and creases come from abrasion during daily wear.

Wearing a pair of raw jeans is a project that can be rewarding. There is no greater opportunity to create a bond with a garment than with raw denim jeans. No other garment allows you to put your personal stamp on it so significantly.

DURABLE! • PERFECT LOOKING!  
HIGH VALUED! • PERSONALIZABLE!



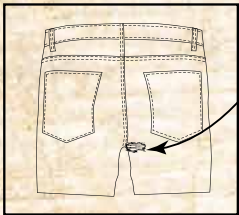
You are not supposed to wash raw denim jeans very often. If you wear your jeans everyday, you can wash them 4 – 6 months after purchase. If you alternate jeans, you should wait a bit longer. If you feel happy about how your jeans are fading, it might be the right time to finally wash them.

RULE#3 WAIT TO WASH YOUR JEANS!

CYCLE OF WASHING		
TURN	MONTH	YEAR
1st	July	2014
2nd	May	2015
3rd	April	2016

Wash them separately in a washing machine on the gentlest and shortest cycle at a low temperature and hang dry.

RULE#4 DO NOT GO LONGER THAN ONE YEAR WITHOUT WASHING.



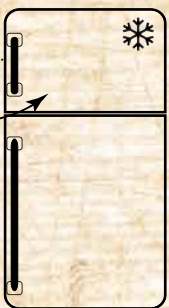
The bacteria will disturb the crotch area which might damage the fabric in this zone.

FREEZE YOUR JEANS TO KILL BACTERIA AND ELIMINATE ODOR.



If your jeans are starting to smell, turn them inside out and spray with textile freshener. Then, place them in a plastic bag and keep them in the freezer for 24 hours.

RULE#5





GO-UP

DARK BLUE

NEW!

ETA MARCH 2019



**DARK BLUE**

TRI-DGU-DBDM-3032 Size 30-32  
TRI-DGU-DBDM-3232 Size 32-32  
TRI-DGU-DBDM-3432 Size 34-32  
TRI-DGU-DBDM-3632 Size 36-32  
TRI-DGU-DBDM-3832 Size 38-32



Go-Up jeans are a true premium jean. They are made of UHMWPE (Ultra High Molecular Polyethylene) which provides the perfect properties of wear-and-tear. Very simple design of the pants leads to a casual look and awesome performance. Go-Ups are lightweight with no extra linings which makes them casual looking jeans ready to wear on the bike and in the city. They are designed with no protectors or the protector pockets and it is recommended to wear slip on knee protector underneath the jeans. Straight regular fit of the jeans hides one secret pocket on the side. For maximum strength, the outside seams were triple stitched. The UHMWPE denim has exceptionally high cut and abrasion resistance compared to other fabrics which makes it almost impossible to tear. 2% of elastane blended in yarns of UHMWPE with cotton provides the comfy stretchiness of the pants. These jeans are proudly handmade in the Czech republic and delivered in fine packaging. If you are looking for affordable jeans with high tech properties, this is your perfect choice.

**SPECIFICATION**

**Outer material:**

11.5 oz Elastic Dyneema® Denim  
(67% Cotton, 14% Dyneema, 10% Nylon, 8% Polyester, 1% Elastan)

**Protection:**

Dyneema® denim  
Triple outseam stitching

**Ergonomic features:**

2 outer pockets; 1 side secret pocket

**Fit:**

Classic bikes, club rides, and on road style, men's EU sizes (30 – 38). Perfectly matches with Distinct and Timber shirts.

**Recommendation:**

to maximize your protection, it is suggested to be worn with slip on protectors

**FEATURES**



UHMWPE

**MATERIALS**



Dyneema® denim

# GO-UP MOTORCYCLE JEANS

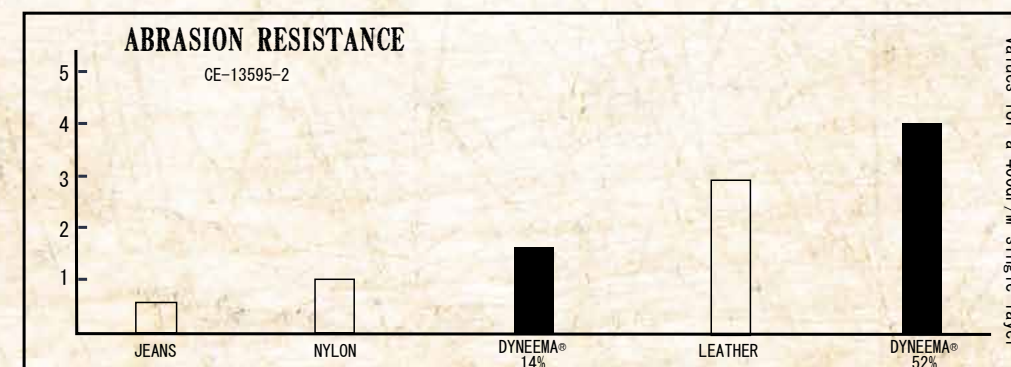


DURABLE APPAREL THAT CAN BETTER WITHSTAND THE WEAR-AND-TEAR OF AN ACTIVE LIFESTYLE OR FOR FULL-BLOWN MOTORCYCLE PROTECTION

EXTREMELY DIFFICULT TO TEAR OR BREAK THE FABRIC.



NOTICEABLY HIGHER CUT RESISTANCE COMPARED TO REGULAR FABRICS AND SPECIAL CUTTING TOOLS ARE REQUIRED TO CUT THE FABRICS.



## REGISTER YOUR GO-UP JEANS!

Register your GO-UP jeans by using their unique serial number. Go to [www.trilobitemoto.com](http://www.trilobitemoto.com) and follow instructions.

Trilobite employees will help you with any issue related to your GO-UP jeans you might encounter while using them. Whenever you need some service on your GO-UP jeans, the Trilobite

team is here for you... If you need some spare parts, just contact us and we will send them to you...

But firstly please finalize your registration so that we can take special care of you and your GO-UP jeans!

REGISTER AT  
[WWW.TRILOBITEMOTO.COM](http://WWW.TRILOBITEMOTO.COM)  
FOR 5 YEARS WARRANTY

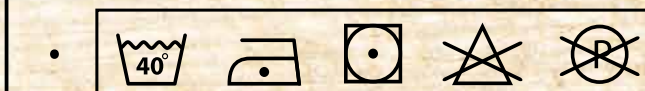


UHMWPE

ULTRA • HIGH • MOLECULAR • WEIGHT • POLYETHYLENE

DENIM

UHMWP in the Go-Up denim has a melting temperature of 140–144°C and therefore any exposure to temperatures higher than 130°C, even for a short period (seconds) should be avoided. Hence the recommendation to iron at max 110°C/230°F and tumble dry at low temperatures.



Even though Go-Up jeans denim itself is chemically inert and therefore resists almost all type of chemicals, it is not recommended to bleach nor dry-clean denim with Dyneema to prevent quality issues related to the cotton fiber in the denim.

**DESIGN & DEVELOPMENT**

Bikers Crown Ltd.  
V Lipkach 78/II  
Chlumec nad Cidlinou  
503 51



TRILOBITE GO-UP DENIM JEANS

THE JEANS WERE CAREFULLY HANDCRAFTED IN THE CZECH REPUBLIC WITH STRONG PERSONAL TOUCH HONORING THE TRADITION.

PROUDLY



MADE IN CZECH

Unlike others, GO-UP jeans were born in authentic atmosphere and they draw inspiration from the past. You are getting a unique piece of garment that creates a real story with trackable path. This is what heritage is all about!

*Trilobite®*



*Original*

• **HERITAGE** •  
COLLECTION

PREMIUM QUALITY ARAMID



PARADO DYNEEMIC PRO

DARK BLUE

NEW!

ETA MARCH 2019



DARK BLUE

TRI-DPE-DBDM-3032	Size 30-32
TRI-DPE-DBDM-3034	Size 30-34
TRI-DPE-DBDM-3232	Size 32-32
TRI-DPE-DBDM-3234	Size 32-34
TRI-DPE-DBDM-3432	Size 34-32
TRI-DPE-DBDM-3434	Size 34-34
TRI-DPE-DBDM-3632	Size 36-32
TRI-DPE-DBDM-3634	Size 36-34
TRI-DPE-DBDM-3832	Size 38-32
TRI-DPE-DBDM-3834	Size 38-34

Parado Dyneemic Pro jeans join the new 2019 collection and offer even stronger, more durable, and more resistant qualities to daily wear and tear thanks to Dyneema® denim fabric. Even small portions of Dyneema® yarn contained in the denim makes the fabric much stronger. Parado Dyneemic Pro contains 14% of Dyneema® yarn inside which makes the jeans abrasion resistant all over the surface. Critical zones in the knees and back side of the legs are lined with DuPont™Kevlar® original aramid fibers which ensures extra protection against abrasion. Original high quality YKK zippers are used in fly and air vent inlets. Extensive air ventilation inlets on thighs provide massive intake of fresh air when needed. Stretch panels in knees, crotch and waist ensure maximum possible comfort during the ride as well as off the bike. The comfort level is increased by Elastane which is contained inside the fabric. This is what we call freedom of movement. Still not sure about Parado Dyneemic Pro jeans? Just try them and they will become your new favorite riding pants! The Parado Dyneemic Pro is delivered with Trilobite CE level 2 protectors in knees and hips which provide a high level of impact safety. These jeans are truly a versatile piece of apparel. No matter if you use them for long travels or short daily rides, you are going to love them.

SPECIFICATION

Outer material:

11.5 oz Elastic Dyneema® Denim, 67% Cotton, 10% Nylon, 8% Polyester, 14% Dyneema, 1% Elastane

**Outer shell Lining:** Aramid fibers lining in knees and seat made with Kevlar® by progressive DuPont™ technology

Protection:

Trilobite® Premium Protection CE level 2 protectors on knees and hips  
Dyneema® yarn inside denim composition  
Aramid fibers made with original Kevlar® by DuPont™ in knees and hips

Ergonomic Features:

- 5 pockets
- Stretch panels in knees, back waist & crotch
- Adjustable height of knee protectors
- Double belt loops in front
- Raised waist belt at the back

Ventilation:

Thighs air vent pockets  
Breathable crotch panel

Packaging:

Waterproof transport bag

Fit:

Travel, urban and on road style, standard fit men's (30 - 38) sizes in regular and long version. Perfectly matches with Distinct and Timber Shirts.

Kevlar® and DuPont™ are trademarks or registered trademarks of E.I. du Pont de Nemours and Company.

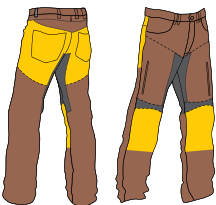
FEATURES



HIPS and KNEES included

Adjustable height of knee protectors

MATERIALS



Aramid fibers lining

DYNEEMA®

PROBUT X-FACTOR

all season Xtremely fitted jeans



removable inner liner

DARK BLUE

TRI-CPX-DBDM-3032	Size 30-32
TRI-CPX-DBDM-3034	Size 30-34
TRI-CPX-DBDM-3232	Size 32-32
TRI-CPX-DBDM-3234	Size 32-34
TRI-CPX-DBDM-3432	Size 34-32
TRI-CPX-DBDM-3434	Size 34-34
TRI-CPX-DBDM-3632	Size 36-32
TRI-CPX-DBDM-3634	Size 36-34
TRI-CPX-DBDM-3832	Size 38-32
TRI-CPX-DBDM-3834	Size 38-34

Probut X-Factor jeans are unbeatable all season travel equipment for riders who want maximum functionality, protection, and comfort. With these jeans weather really doesn't matter. When it is cold and rainy the removable inner pants made of a waterproof membrane and thermo insulating layer will do their job. When it is hot outside, Cordura® denim with Coolmax® fiber system will take the body moisture to the upper layer giving these riding jeans perfect cooling and drying performance. The jeans have air ventilation pockets on thighs. Nylon boot cuffs prevent water from getting in from the bottom during the rain. Reflective stripes in calf zones maximize the visibility on road.

The jeans are made from 12.5 oz Cordura® denim with Coolmax® which is an abrasion resistant material. Cordura denim is 4 times stronger than standard denim of the same weight. Impact zones in knees and seat are lined with large aramid fiber panels made with original Kevlar® by DuPont™. All together it means double abrasion resistance. Impact safety is managed by Trilobite® Premium protection CE level 2 armor in knees and hips while knee pad pockets can be installed through exterior zipper openings. Triple outseam underlines safety performance of Probut X-Factor jeans.

Due to ergonomically shaped stretch panels in the knees, back of the waist, and crotch, riders will always move freely and travel comfortably on long trips. The X-shaped crotch panel gives a wide range of movement on the bike.

SPECIFICATION

Outer material:

12.5 oz Cordura® denim with Coolmax® fibres

Outer shell lining:

Aramid fiber lining in knees and seat made with Kevlar® by progressive DuPont™ technology

Protection:

Trilobite® Premium Protection CE Level 2 protectors on hips and knees  
Triple outseam

Ergonomic features:

- 5 pockets + 1 secret pocket
- Stretch panels in knees, back waist, and crotch
- Adjustable height of knee protectors
- Double belt loops in front
- Raised waist belt at the back

Ventilation:

Thigh air vent pockets  
Breathable crotch panel  
Coolmax® moisture wicking system

Water resistance:

Membrane 10,000 mm water column / 10,000 g breathability

Fit:

Travel off road and on road style men's (30 - 38) EU sizes in regular and long versions. Perfectly matches with Trilobite® Rally jackets.

Packaging:

Supplied with inner pants in a separate transport bag not installed to jeans

Kevlar® and DuPont™ are trademarks or registered trademarks of E.I. du Pont de Nemours and Company.

FEATURES

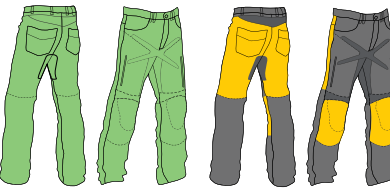
100%



HIPS and KNEES

Adjustable height of knee protectors

MATERIALS



Cordura® denim

Aramid fibres lining



NEW COLORS!

ETA MARCH 2019



- LIGHT BLUE
- |                   |            |
|-------------------|------------|
| TRI-KPE-LBDM-3032 | Size 30-32 |
| TRI-KPE-LBDM-3034 | Size 30-34 |
| TRI-KPE-LBDM-3232 | Size 32-32 |
| TRI-KPE-LBDM-3234 | Size 32-34 |
| TRI-KPE-LBDM-3432 | Size 34-32 |
| TRI-KPE-LBDM-3434 | Size 34-34 |
| TRI-KPE-LBDM-3632 | Size 36-32 |
| TRI-KPE-LBDM-3634 | Size 36-34 |
| TRI-KPE-LBDM-3832 | Size 38-32 |
| TRI-KPE-LBDM-3834 | Size 38-34 |



Trilobite 661 Parado are real motorcycle jeans. At first glance it is apparent they are made for riding. A pair of these jeans will offer unrivalled riding comfort. It is not only because of stone washed elastic denim but also by ergonomically shaped stretch panels in the crotch, knees, and back waist zones.

Abrasion resistance by progressive DuPont™ technology aramid fibers made with Kevlar® will protect your skin in case of friction during an accident. Removable Trilobite® Premium protection CE level 2 armor in knees and hips will guarantee maximum impact protection. Riders will easily find the correct position of knee pads due to the adjustable height hook and loop fastener system inside the knee pockets.

Parado jeans are composed of high-end components only. YKK metal zippers and Kevlar® aramid fibers from DuPont™ are essential parts of these motorcycle jeans.

When riding during warm summer days, large air ventilation pockets on thighs will come in handy as they will let the fresh air in right where you need it. Raised waist belt on the back side will cover the bottom part of your back.

Parado jeans are high tech denim pants for demanding riders who search for a high level of protection and unmatched comfort.

Parado jeans are CE certified and a GS marked product. They are produced under TÜV control.

## SPECIFICATION

- Outer material:**  
11.5 oz elastic denim, 98% cotton, 2% elastane
- Outer shell lining:**  
Aramid fiber lining in knees and seat made with Kevlar® by progressive DuPont™ technology
- Protection:**  
Trilobite® Premium Protection CE Level 2 protectors on hips and knees
- Ergonomic features:**  
5 pockets  
Stretch panels in knees, back waist, and crotch

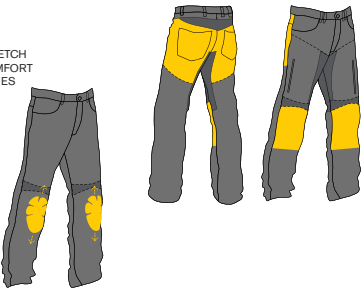
- Adjustable height of knee protectors  
Double belt loops in front  
Raised waist belt at the back
- Ventilation:**  
Thigh air vent pockets  
Breathable crotch panel
- Packaging:**  
Waterproof transport bag
- Fit:**  
Travel, urban and on road style, regular men's (30 - 38) EU sizes.
- Kevlar® and DuPont™ are trademarks or registered trademarks of E.I. du Pont de Nemours and Company.

## FEATURES



Adjustable height of knee protectors

## MATERIALS



- Aramid fibres lining
- Denim

LIGHT GRAY

- LIGHT GRAY
- |                   |            |
|-------------------|------------|
| TRI-KPE-LGDM-3032 | Size 30-32 |
| TRI-KPE-LGDM-3034 | Size 30-34 |
| TRI-KPE-LGDM-3232 | Size 32-32 |
| TRI-KPE-LGDM-3234 | Size 32-34 |
| TRI-KPE-LGDM-3432 | Size 34-32 |
| TRI-KPE-LGDM-3434 | Size 34-34 |
| TRI-KPE-LGDM-3632 | Size 36-32 |
| TRI-KPE-LGDM-3634 | Size 36-34 |
| TRI-KPE-LGDM-3832 | Size 38-32 |
| TRI-KPE-LGDM-3834 | Size 38-34 |



RUSTY BROWN



- RUSTY BROWN
- |                   |            |
|-------------------|------------|
| TRI-KPE-RBDM-3032 | Size 30-32 |
| TRI-KPE-RBDM-3034 | Size 30-34 |
| TRI-KPE-RBDM-3232 | Size 32-32 |
| TRI-KPE-RBDM-3234 | Size 32-34 |
| TRI-KPE-RBDM-3432 | Size 34-32 |
| TRI-KPE-RBDM-3434 | Size 34-34 |
| TRI-KPE-RBDM-3632 | Size 36-32 |
| TRI-KPE-RBDM-3634 | Size 36-34 |
| TRI-KPE-RBDM-3832 | Size 38-32 |
| TRI-KPE-RBDM-3834 | Size 38-34 |



BLACK



- BLACK
- |                   |            |
|-------------------|------------|
| TRI-KPE-BKDM-3032 | Size 30-32 |
| TRI-KPE-BKDM-3034 | Size 30-34 |
| TRI-KPE-BKDM-3232 | Size 32-32 |
| TRI-KPE-BKDM-3234 | Size 32-34 |
| TRI-KPE-BKDM-3432 | Size 34-32 |
| TRI-KPE-BKDM-3434 | Size 34-34 |
| TRI-KPE-BKDM-3632 | Size 36-32 |
| TRI-KPE-BKDM-3634 | Size 36-34 |
| TRI-KPE-BKDM-3832 | Size 38-32 |
| TRI-KPE-BKDM-3834 | Size 38-34 |



# MICAS URBAN

slim fit jeans

BLUE ACID



### BLUE ACID

- TRI-KMU-BADM-3032 Size 30-32
- TRI-KMU-BADM-3232 Size 32-32
- TRI-KMU-BADM-3432 Size 34-32
- TRI-KMU-BADM-3632 Size 36-32
- TRI-KMU-BADM-3832 Size 38-32

GRAY



### GRAY

- TRI-KMU-GYDM-3032 Size 30-32
- TRI-KMU-GYDM-3232 Size 32-32
- TRI-KMU-GYDM-3432 Size 34-32
- TRI-KMU-GYDM-3632 Size 36-32
- TRI-KMU-GYDM-3832 Size 38-32

Micas Urban jeans are protective jeans with a casual look. They feature a slim fit available in various color options. Urban styling makes these jeans a great choice for city riders. With their functionality these jeans will appeal not only to scooter riders but also street and naked bike riders for their city riding and trips around town. Stretchy denim provides maximum comfort for these slim fit jeans. Knee stretch panels are integrated as a fashion element. High waist at the back will cover the back of the rider when on the road perfectly. Micas urban jeans are lined with aramid fibers made with Kevlar® by DuPont™. The lining covers the knee and hip impact zones giving the jeans excellent abrasion resistance. The Micas Urban comes with CE level 2 Trilobte® Premium protectors in the knees as standard. Insertion of knee pads is very easy thanks to hidden zipper openings in knee stretch panels. Jeans can be optionally equipped with hip protectors.

## SPECIFICATION

### Outer material:

11.5 oz elastic denim, 98% cotton, 2% elastane, 12 oz non-stretchy denim

### Outer shell lining:

Aramid fiber lining in knees and seat made with Kevlar® by progressive DuPont™ technology

### Protection:

Trilobite® Premium Protection CE Level 2 protectors on knees  
Hip protector ready

### Ergonomic features:

- 5 pockets
- Stretch panels in knees
- Adjustable height of knee protectors
- Raised waist belt at the back

### Fit:

Urban, scooter and street, on road style, slim fit men's (30 - 38). Perfectly matches with Timber and Distinct shirts.

Kevlar® and DuPont™ are trademarks or registered trademarks of E.I. du Pont de Nemours and Company.

## FEATURES



LADIES VERSION AVAILABLE



ARAMID ABRASION RESISTANCE



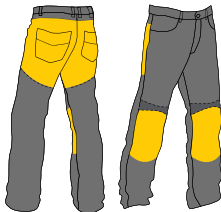
STRETCH COMFORT ZONES



KNEE PROTECTORS INCLUDED prepared for hip protectors



## MATERIALS



Aramid fibres lining

Denim

# MICAS URBAN LADIES

slim fit jeans

BLUE



GRAY

### GRAY

- TRI-LMK-GYDM-426 Size 4-26
- TRI-LMK-GYDM-628 Size 6-28
- TRI-LMK-GYDM-830 Size 8-30
- TRI-LMK-GYDM-1032 Size 10-32
- TRI-LMK-GYDM-1234 Size 12-34
- TRI-LMK-GYDM-1436 Size 14-36



## SPECIFICATION

### Outer material:

11.5 oz elastic denim, 98% cotton, 2% elastane, Camo color options 12 oz non-stretchy denim

### Outer shellLining:

Aramid fiber lining in knees and seat made with Kevlar® by progressive DuPont™ technology

### Protection:

Trilobite® Premium Protection CE Level 2 protectors on knees  
Hip protector ready

### Ergonomic Features:

- 5 pockets
- Stretch panels in knees
- Adjustable height of knee protectors
- Raised waist belt at the back

### Fit:

Urban, scooter and street, on road style, slim fit ladies (4 - 14) sizes.

Kevlar® and DuPont™ are trademarks or registered trademarks of E.I. du Pont de Nemours and Company.

## FEATURES



ARAMID ABRASION RESISTANCE



STRETCH COMFORT ZONES

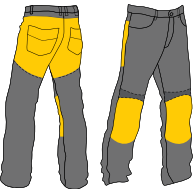


KNEE PROTECTORS INCLUDED prepared for hip protectors

Adjustable height of knee protectors



## MATERIALS



Aramid fibres lining

Denim

Micas Urban jeans are protective motorcycle jeans with a casual look. They feature a slim fit available in various color options. Urban styling makes these jeans a great choice for city riders. With their functionality these jeans will appeal not only to scooter riders but also street and naked bike riders for their city riding and trips around town. Stretchy denim provides maximum comfort for these slim fit jeans. Knee stretch panels are integrated as a fashion element. High waist at the back will cover the back of the rider when on the road perfectly. Micas urban jeans are lined with aramid fibers made with Kevlar® by DuPont™. The lining covers the knee and hip impact zones giving the jeans excellent abrasion resistance. The Micas Urban comes with CE level 2 Trilobte® Premium protectors in the knees as standard. Insertion of knee pads is very easy thanks to hidden zipper openings in knee stretch panels. Jeans can be optionally equipped with hip protectors.



# TAFF

BLACK



NEW!

ETA MARCH 2019



### GRAY

- TRI-KTP-BKDM-3232 Size 32-32
- TRI-KTP-BKDM-3432 Size 34-32
- TRI-KTP-BKDM-3632 Size 36-32
- TRI-KTP-BKDM-3832 Size 38-32

Taff are simple looking pants with protection provided by DuPont™ and Trilobite® Premium Protection CE level 2 protectors on hips and knees which are easily inserted from inside.

Magnum Poli Denim is chosen because of its soft, strong, fashionable and durable qualities. Any rider who is looking for comfortable, simple looking pants with outstanding performance can't make a mistake with Taff jeans.

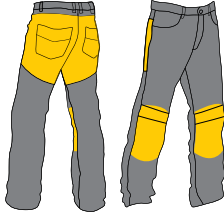
## SPECIFICATION

- Outer material:**  
100% Magnum Poly Denim
- Protection:**  
Aramid fibers lining in knees and seat made with Kevlar® by DuPont™ technology  
Trilobite® Premium Protection CE level 2 protectors on hips and knees
- Ergonomic features:**  
Belt loops for adjustment, front flap with 1 button  
2 front pockets, 1 secret pocket, 2 back pocket

## FEATURES



Adjustable height of knee protectors



Aramid fibers lining Denim

# LEGGINGS

BLACK

NEW!

ETA MARCH 2019



### GRAY

- TRI-LSP-BKDM-426 Size 4-26
- TRI-LSP-BKDM-628 Size 6-28
- TRI-LSP-BKDM-830 Size 8-30
- TRI-LSP-BKDM-1032 Size 10-32
- TRI-LSP-BKDM-1234 Size 12-34
- TRI-LSP-BKDM-1436 Size 14-36



When leggings are your favorite everyday pants to wear for comfort and fashion, then why wear anything else on your bike? Save your skin with moto-specific reinforced leggings. The cut is designed to make them feel like a normal pair of jeans even though they are far from it. The comfort is due to soft stretchy fabric, stretch panels above knees and higher flexible waistband without a front zipper. Lined with Aramid Fiber at front & back these Leggings are designed for abrasion resistance. They feature internal pockets for knee and hip armors for the complete protection you would expect from motorcycle gear. Two front and 2 back external pockets to keep your belongings.

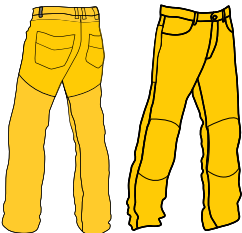
## SPECIFICATION

- Outer material:**  
Outer shell: 100% Stretch Polyamide
- Protection:**  
Aramid fiber lining at front & back  
Trilobite Premium Protection CE level 2 protection at knee  
pockets ready for hip protectors
- Ergonomic features:**  
Pockets:  
2 hand pockets, 2 back pockets

- Adjustability:**  
belt loops for adjustment  
stretch panels for better fitting at knees

- Fit:**  
Slim fit  
Kevlar® and DuPont™ are trademarks or registered trademarks of E.I. du Pont de Nemours and Company.

## FEATURES



Aramid fibers lining





# TIMBER SHIRT

ORANGE



GRAY



## ORANGE

TRI-STF-FNOR-3S  
TRI-STF-FNOR-4M  
TRI-STF-FNOR-5L  
TRI-STF-FNOR-6XL  
TRI-STF-FNOR-7XXL

Small  
Medium  
Large  
X Large  
2X Large

## GRAY

TRI-STF-FNGY-3S  
TRI-STF-FNGY-4M  
TRI-STF-FNGY-5L  
TRI-STF-FNGY-6XL  
TRI-STF-FNGY-7XXL  
TRI-STF-FNGY-8XXL

Small  
Medium  
Large  
X Large  
2X Large  
3X Large

The Timber is a classic lumberjack style shirt customized for riders. The shirt is reinforced with a complete protective aramid fiber lining made with Kevlar® by DuPont™ technology. Additionally, the shirt has bolstered protection with a set of Trilobite® CE Level 2 shoulder and elbow protectors, so you have extra protection right where you want it. Optionally, you can equip this shirt with a Trilobite® Premium Protection® CE Level 2 back protector to increase your safety while riding. The shirt has direct embroidery on the back and a metal logo on the front pocket. Wearing a piece of protective clothing can look really stylish! It is perfect for riding and comfortable for hanging around when you are off your wheels of steel. When the temperatures rise you can just open the air ventilation zippers in the underarm zones.

## SPECIFICATION

### Outer material:

Cotton

### Inner material:

Polyester Mesh Lining, Aramid Fibres

### Protection:

Trilobite® Premium Protection CE Level 2 in shoulders and elbows  
Prepared for CE back protector  
Full aramid fiber lining made with original Kevlar® by DuPont™

### Ergonomic features:

2 outer pockets  
2 inner pockets  
Adjustable sleeves by buttons and YKK zippers  
Air ventilation under arms adjustable by YKK zippers

### Fit:

City, club rides, campouts, men's EU sizes (S - 3XL). Perfectly matches with Trilobite® Raw Authentic jeans.

Kevlar® and DuPont™ are trademarks or registered trademarks of E.I. du Pont de Nemours and Company.

## FEATURES



ARAMID  
ABRASION  
RESISTANCE



SHOULDERS & ELBOWS  
Prepared for back protector



Aramid fibres lining

## MATERIALS





# DISTINCT SHIRT

BLUE  
NEW COLOR!

ETA MARCH 2019



GRAY



- BLUE**  
TRI-SWD-BLBL-4M  
TRI-SWD-BLBL-5L  
TRI-SWD-BLBL-6XL  
TRI-SWD-BLBL-7XXL
- Medium  
Large  
X Large  
XX Large
- GRAY**  
TRI-SWD-GYGY-3S  
TRI-SWD-GYGY-4M  
TRI-SWD-GYGY-5L  
TRI-SWD-GYGY-6XL  
TRI-SWD-GYGY-7XXL
- Small  
Medium  
Large  
X Large  
XX Large

Stylish wax denim shirt made for urban or rural riding. The top material is made of wax cotton that does not have an oil-greasy finish, and gives the DISTINCT shirt a classic vintage look. Trilobite® metal buttons and metal logo above the pocket along with a leather label on the back provide a stylish look for the rider. The DISTINCT shirt is bolstered up with protection features such as a set of Trilobite CE Level 2 shoulder and elbow protectors, so you can have extra protection right where you want it. Additionally, you can equip this shirt with Trilobite® Premium Protection CE Level 2 back protection to increase safety while riding. Furthermore, the shirt is underlined with Kevlar® by DuPont™ aramid fibers at the back and elbows. The Trilobite® Distinct is a comfortable shirt thanks to its simple design and clever features such as back gussets that add comfort while holding the handlebars of the motorcycle. The Distinct shirt has you covered when it comes to style and protection!

## SPECIFICATION

- Outer material:**  
Wax Cotton
- Inner material:**  
Polyester Mesh Lining,  
Aramid Fibers
- Protection:**  
Trilobite® Premium Protection CE Level 2 in shoulders and elbows  
Prepared for CE back protector  
Aramid Fibers made with original Kevlar® by DuPont™ in back and elbows

- Ergonomic features:**  
2 outer pockets  
2 inner pockets  
Adjustable sleeves by buttons
- Fit:**  
City riding and urban style, men's EU sizes. Perfectly matches with Raw Authentic jeans.

Kevlar® and DuPont™ are trademarks or registered trademarks of E.I. du Pont de Nemours and Company.

## FEATURES



## MATERIALS



Wax cotton      Aramid fibres lining



RALLY JACKET

BLACK



BLACK

- TRI-JWR-BKBK-3S Small
- TRI-JWR-BKBK-4M Medium
- TRI-JWR-BKBK-5L Large
- TRI-JWR-BKBK-6XL X Large
- TRI-JWR-BKBK-7XXL 2X Large

The Rally jacket is a technical touring jacket with classic style. A perfect balance between style and safety. The 3-layer construction makes this jacket an all season piece of equipment. Separate layers made of Tri-Tex® membrane (10 000/10 000) and Thermolite® thermo insulation lining can be independently connected to the jacket when you need it. Denim panels on the jacket are made of Trilobitex® technical denim which contains aramid fibers and a nano-membrane inside. These attributes give the Rally jacket extensive abrasion and water resistance qualities.

The Rally jacket is delivered with shoulder and elbow Trilobite® Premium Protection CE Level 2 armor and is prepared for optional installation of CE level 2 Trilobite® Premium back protector. On the sleeves and chest there are large air vent pockets with mesh inside which let the fresh air in, on the back side there is an air outlet pocket.

All together you will find 9 pockets on the Rally jacket. At the back side there is an extensive adventure style storage space, inside a cell phone pocket. To increase visibility on the road, the Rally jacket has a reflective Trilobite logo on the back.

On the sleeves and waist there are adjustable straps with buckles to set the right fitting. All zippers on the Rally jacket are high quality YKK. The main closure in front is made with a YKK thick tooth zipper and hook and loop flap. Collar and sleeve rims in leather give this jacket a stylish look. All the flaps and edges are lined with a comfy soft touch fabric.

FEATURES

AIR VENTILATION

REMOVABLE WATERPROOF LINER

ARAMID ABRASION RESISTANCE

PROTECTION LEVEL 2  
EN 1621-2:2014  
EN 1621-2:2012  
SHOULDERS & ELBOWS prepared for back protector

REFLECTIVE ELEMENTS

ADJUSTABLE STRAPS

MATERIALS

Wax cotton

TRILOBITEX®

SPECIFICATION

- Outer material:**  
Wax Cotton and Trilobitex®
- Protection:**  
Trilobite® Premium Protection CE Level 2 in shoulders and elbows  
Prepared for CE back protector  
Aramid Fibers made with original Kevlar® by DuPont™ inside Trilobitex®
- Ergonomic features:**  
9 pockets  
large storage space at the back  
Adjustable waist and sleeves  
Collar lock
- Visibility:**  
Reflective Trilobite® logo at the back

- Ventilation:**  
Air vent inlets on chest and sleeves, air outlet at the back  
Breathable Tri-Tex® membrane with 10 000 g/m²/24h
- Thermo insulation:**  
Removable Thermolite® lining
- Water resistance:**  
Tri-Tex® membrane with 10 000 mm water column
- Fit:**  
Travel off road and on road, adventure riding, men's EU sizes (S - 2XL).  
Perfectly matches with the Probut X-factor jeans.

Kevlar® and DuPont™ are trademarks or registered trademarks of E.I. du Pont de Nemours and Company.

ACE JACKET

BLUE



NEW!

ETA MARCH 2019

BLUE

- TRI-JAC-BLBL-3S Small
- TRI-JAC-BLBL-4M Medium
- TRI-JAC-BLBL-5L Large
- TRI-JAC-BLBL-6XL X Large
- TRI-JAC-BLBL-7XXL 2X Large



The Ace jacket is a city riding jacket with maximum focus on style and functionality. The jacket itself has a very urban look. The upper shell looks like denim but it is actually made of strong Polyester fiber which provides a high level of abrasion resistance. When it comes to the rain, there is a fixed Tri-Tex® 10 000/10 000 waterproof and breathable membrane inside which will not let the water in. Moreover, this jacket is hydro-phobically treated all over the surface. The urban design is complemented with subtle leather parts in brown.

The Ace jacket is lined with DuPont™ Kevlar® aramid fibers in impact zones (back, shoulders, and elbows) which ensures abrasion resistance during friction.

Removable Trilobite® Premium protection CE level 2 armor in shoulders and elbows, will guarantee maximum impact protection. Optionally, this jacket can be equipped with a Trilobite CE level 2 back protector. Maximum visibility is a very important safety aspect especially in urban riding, therefore the stitching in the upper back part and arms is made with 3M reflective thread.

The main purpose of this jacket is to offer appreciated functionality and details which come in handy during daily city life and riding. If you always struggle to find the right place to put your sunglasses away, you will find a smart solution on the chest of the Ace jacket. It is easy but priceless.

When your bike needs attention, or you need to check a map for directions and it is dark outside, the tiny yet powerful Micro Photon II Super LED light is handy on your jacket. The beam of light is visible 1,6 km and it is rated 4,5+ Lumens, although actual output is somewhat higher. The light can run 12hours of continuous usage and it works even in sub-zero temperatures. It weighs only 7 grams and the combination of Photon's glass-filled Polyurethane body and unbreakable LED bulb makes a virtually indestructible light. Every rider truly welcomes this feature.

In the waist there are stretch ribbings which provide extensive comfort. The Ace jacket has a bit longer back panel, so it fully covers the rider's back. It is urban riding equipment which will be appreciated by riders who do not want to carry anything extra and expect maximum function from their riding equipment.

SPECIFICATION

- Outer material:**  
97% Polyester with denim look, 3% Leather
- Lining:**  
Lining made of 100% recycled Polyester
- Protection:**  
Trilobite® Premium Protection CE level 2 Protection in shoulders and elbows included; prepared for Trilobite CE level 2 back protector  
Aramid fibers made with original Kevlar® by DuPont™ in back, shoulders and elbows
- Ergonomic Features:**  
4 pockets outside; 2 pockets inside  
Flexible waist  
Sunglasses holder

- Visibility:**  
3M Reflective stitching on arms and back  
Micro Photon II Super LED light
- Ventilation:**  
Breathable Tri-Tex® membrane with 10 000g/m²/24h
- Water resistance:**  
Tri-Tex® membrane with 10.000 mm water column
- Fit:**  
Urban riding, road style, men's EU sizes (S - 2XL). Perfectly matches with Trilobite® Parado jeans and Taff pants.

Kevlar® and DuPont™ are trademarks or registered trademarks of E.I. du Pont de Nemours and Company.

FEATURES

100% WATERPROOF

ADJUSTABLE STRAPS

PREPARED FOR BACK PROTECTOR

ARAMID ABRASION RESISTANCE

STRETCH COMFORT ZONES

RECYCLED MATERIALS

PROTECTION LEVEL 2  
EN 1621-2:2014  
EN 1621-2:2012  
SHOULDERS, and ELBOWS included

MATERIALS

Polyester with denim look

Aramid fibers lining



RALLY GLOVES

BLUE



- BLUE**
- |                   |          |
|-------------------|----------|
| TRI-GRA-BLDM-3S   | Small    |
| TRI-GRA-BLDM-4M   | Medium   |
| TRI-GRA-BLDM-5L   | Large    |
| TRI-GRA-BLDM-6XL  | X Large  |
| TRI-GRA-BLDM-7XXL | 2X Large |

Street riding performance is what riders get from Rally gloves. Rally gloves are a combination of leather and denim lined with aramid fibers. Short wrist fit gives the gloves a real street ride look. A wrist hook and loop closure and leather pull up strap make it easy to slip into the glove within seconds. Hard knuckle and palm protectors guarantee a high level of impact safety.

SPECIFICATION

**Outer material:**  
Denim and leather  
Palm: Original drum dyed aniline/ comfort natural A+ quality cowhide leather  
Back: Top quality denim with stitch design & steel fashion stud.

**Outer shell lining:**  
Aramid fiber lining made with Kevlar® by progressive DuPont™ technology in back of the hand

**Protection:**  
Aramid fiber lining made with Kevlar® by DuPont™  
Pittard leather patches on palm for extra protection and grip

High density molded protection on knuckles and palm for safety

**Ergonomic features:**  
Adjustable hook and loop strap closure with embossed logo  
Leather puller

**Fit:**  
street riding, men sizes (S – 2XL). Perfectly matches Rally Jacket and all jeans.

Kevlar® and DuPont™ are trademarks or registered trademarks of E.I. du Pont de Nemours and Company.

FEATURES

- 

LADIES VERSION AVAILABLE
- 

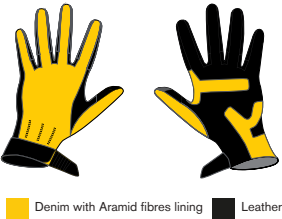
KNUCKLE PROTECTORS
- 

LEATHER PULLER
- 

ARAMID ABRASION RESISTANCE
- 

LEATHER ABRASION RESISTANCE

MATERIALS



PARADO GLOVES

BLUE



- BLUE**
- |                   |          |
|-------------------|----------|
| TRI-GPR-BLDM-3S   | Small    |
| TRI-GPR-BLDM-4M   | Medium   |
| TRI-GPR-BLDM-5L   | Large    |
| TRI-GPR-BLDM-6XL  | X Large  |
| TRI-GPR-BLDM-7XXL | 2X Large |

Get a proper grip and precise touch with Parado gloves. These are designed to match the Parado jeans in functionality, safety, and comfort. The upper part is made of denim, the palm is made of leather. The gloves are fully lined with aramid fibers made with Kevlar® by DuPont™ which gives maximum abrasion resistance. The little and ring fingers are made of leather and protected by hard protection. All knuckles and impact zones are protected with soft or hard protectors. Various stretch panels on fingers and wrist ensure comfort. Between fingers there are small stretchy and breathable gussets ensuring flexibility and ventilation. The reflective strap with the Trilobite logo on the back of the hand increase rider's visibility on road. Finger tips are touch screen ready so that riders can easily operate a cell phone or GPS without having to take the gloves off. The wrist band is made of stretchy neoprene with a hook and loop strap to fix the gloves as you need.

SPECIFICATION

**Outer material:**  
Denim and leather  
Palm: Original drum dyed aniline/ comfort natural A+ quality cowhide leather  
Back: Top quality denim with flexible panels on back and fingers for ease of motion

**Outer shell lining:**  
Full aramid fiber lining made with Kevlar® by progressive DuPont™ technology

**Protection:**  
Aramid fiber lining made with Kevlar® by DuPont™  
High density molded protection on knuckles for safety  
Extra layers of leather on palm to increase safety

**Ergonomic features:**  
Stretch panels on fingers and wrist  
Elastic/soft Lycra between fingers for comfort movement  
Touch screen compatible finger tips  
Embossed neoprene on wrist cuff for ergo fit

- Leather puller
- Adjustable hook and loop strap closure

**Visibility:**  
3M Scotchlite reflective strap with logo on the back of the hand

**Fit:**  
Travel and street riding, men's sizes (S – 2XL). Perfectly matches Rally Jacket and all jeans.

Kevlar® and DuPont™ are trademarks or registered trademarks of E.I. du Pont de Nemours and Company.

FEATURES

- 

LADIES VERSION AVAILABLE
- 

REFLECTIVE ELEMENTS
- 

ARAMID ABRASION RESISTANCE
- 

LEATHER ABRASION RESISTANCE
- 

ADJUSTABLE STRAPS
- 

KNUCKLE PROTECTORS
- 

TOUCH SCREEN COMPATIBLE FINGER TIPS
- 

STRETCH COMFORT ZONES
- 

LEATHER PULLER

MATERIALS





COMFEE GLOVES

BLACK

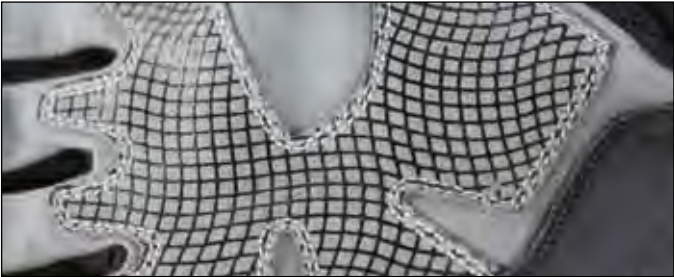
NEW!

ETA MARCH 2019



**BLACK**  
TRI-GCM-BK BK-3S  
TRI-GCM-BK BK-4M  
TRI-GCM-BK BK-5L  
TRI-GCM-BK BK-6XL  
TRI-GCM-BK BK-7XXL

Small  
Medium  
Large  
X Large  
2X Large



Designed for adventurous rides in the woods and in nature. Where there is no danger of sliding on asphalt and complete freedom of movement is required, similar to a motocross glove, the Trilobite Comfee gloves offers a combination of retro looks, enhanced protection, and the convenience of a sports gloves. The cowhide drum dyed natural A plus leather is used to make the side of the glove and the little finger edge. For perfect feel while driving, a fourway stretch spandex is used, which does not pinch anywhere, and is enjoyable even on a long, extreme off road trip. Synthetic leather with silicone print on all the fingers on the underside helps to ensure good clutch and brake lever grip and prevents sliding of fingers while shifting and braking. Smart Touch fingertips allow you to interact with your touch screen devices. The underside of the gloves are reinforced to help prevent palm bruising during long journeys. Every time you take off the glove, you will appreciate the puller for easy wearing before your next ride.

SPECIFICATION

**Material**  
**Outer Shell:** (Palm) Top quality amara /synthetic leather with extra layer with silicon printing for comfort fit and perfect control  
Special CE approved Goat leather puller on palm with antique Trilobite steel stud for easy wearing  
**Outer Shell:** (Back) Top quality elasticated 4-way & strong ventilated mesh with leather panels on back & finger for better movement & protection


**Protection:**  
Top quality high density soft molded inlayed knuckle  
TPU plastic joint protection  
Lining: Super strong aramid lining inside for protection  
Touchscreen compatible


**Ergonomics and Comfort:**  
Pre-curved fingers  
Stretch panels on fingers  
Four way stretch spandex  
Adjustable celcro strap closure around the wrist  
Smart mesh  
Practical puller for easier putting on


**Other Features:**  
Soft inserts  
Trilobite emboss logo details on back for branding & fashion  
Elastic/soft mesh between fingers for comfort & ventilation  
Vintage look with classic dirty wax finish for fashion  
Adjustable hook and loop strap closure  
Ergonomic size fitting


Kevlar® and DuPont™ are trademarks or registered trademarks of E.I. du Pont de Nemours and Company.


FEATURES

- 

STRETCH COMFORT ZONES
- 

TOUCH SCREEN COMPATIBLE FINGER TIPS
- 

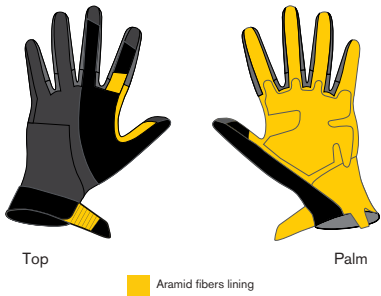
LEATHER PULLER
- 

ADJUSTABLE STRAPS
- 

ARAMID ABRASION RESISTANCE

CE EN 13594:2015

MATERIALS



Top  
Palm  
Aramid fibers lining







### GET FOCUSED ON

VEMAR is focused on the constant search for excellence in innovation, materials and design. That's why VEMAR helmets deserve a starring role on the road, or in the dirt, and why the brand is ready to win this challenge.

VEMAR is a historical player in the Italian motorcycle helmet market: established in the 70s, it is reborn today with the aim of becoming the preeminent choice for riders who demand a competitive, quality product.

The first step taken by International Helmet Company after the acquisition of the VEMAR brand was to focus on research and development. The goal was to rethink the product line from scratch and come back onto the market with a completely new range of groundbreaking helmets, thanks to a total restyling of the brand itself.

Today, together with IHC, the new VEMAR brand is at the dawn of a new era and ready to reach further and ambitious goals.

#### INTERNATIONAL HELMET COMPANY

The International Helmet Company was founded in Switzerland in 2015, with the aim of connecting organizational skills and financial expertise to VEMAR'S Italian design, tradition and know-how.

The mission of the INTERNATIONAL HELMET COMPANY is to become the benchmark in the sports protective equipment

industry through the identification and acquisition of innovative brands. Thanks to a proven expertise in product development, business management, marketing and design, we are able to stream line the existing business model.

Now the challenge is focused on the motorcycle helmet market, with the expertise of an important brand like VEMAR.

#### DESIGN MADE IN ITALY

For us, refinement, style, and attention to detail are key elements in the design and production of each VEMAR helmet model.

#### SAFETY KNOW HOW

Relying on our decades of knowledge in the industry, VEMAR helmets exceed every homologation standard to always guarantee maximum safety in any application, from racing to casual riding.

#### UNIQUENESS

Each VEMAR helmet is unique, as unique as the experience on the road or track for those who are going to wear them. We have developed one of the most complete range of models on the market to offer each rider affordable and high quality products.

In the following pages you will see the 2019 VEMAR collection. We are sure you will be impressed and hope to have your dealership representing the VEMAR brand for years to come!



## Vemar Helmet Size Chart

Size	Metric	Inches
XS	53-54cm	20 3/4 to 21 1/4
S	55-56cm	21 5/8 to 22
M	57-58cm	22 1/2 to 22 3/4
L	59-60cm	23 1/4 to 23 1/2
XL	61-62cm	24 to 24 3/8
XXL	63-64cm	24 7/8 to 25 1/8

The correct size is determined by the circumference of the riders head.

This must be measured at a height of about 3/4 of an inch above the riders eyebrows.

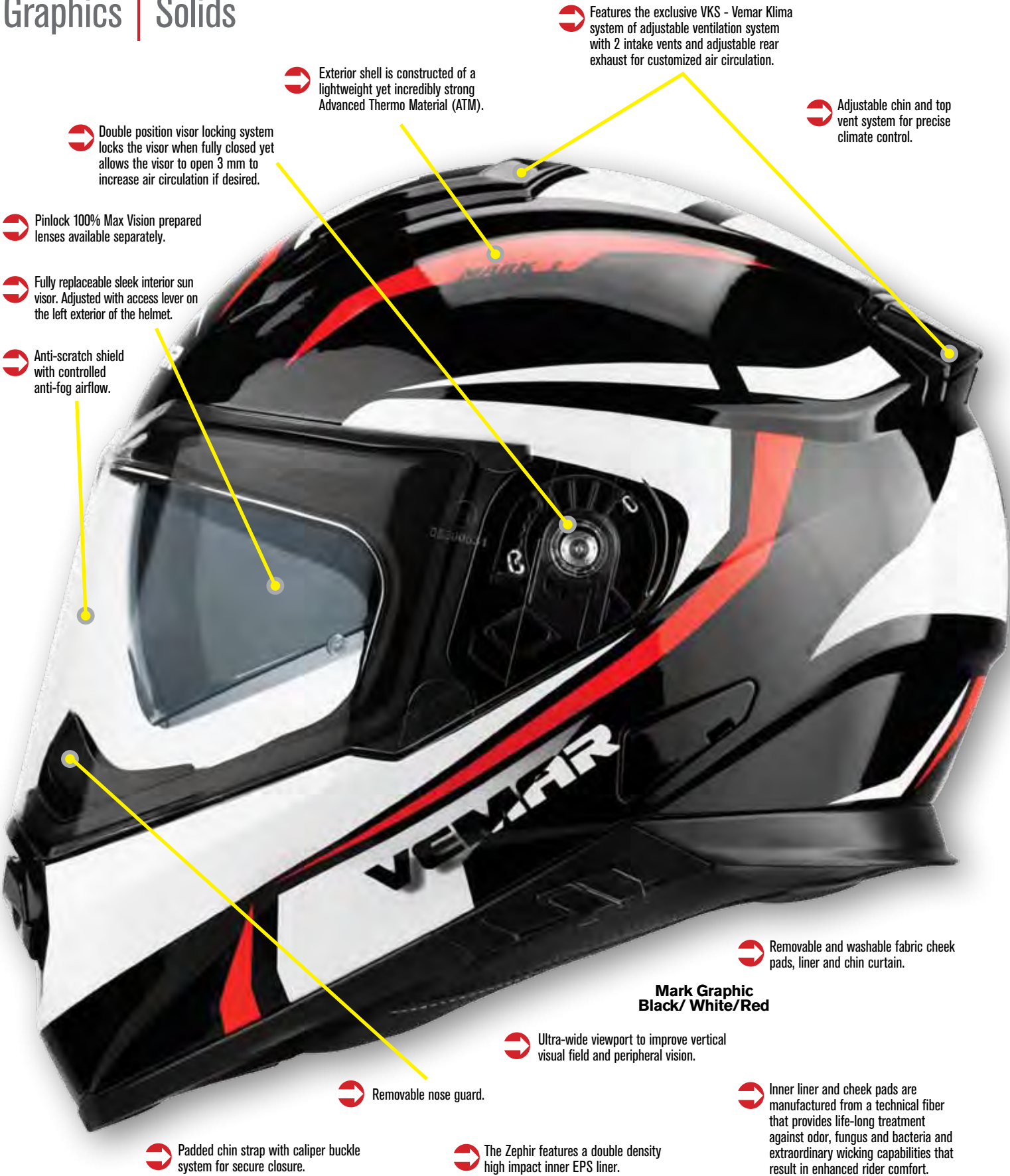
Note: chart is based on metric measurements, inches are a conversion





# Zephir

Graphics | Solids



The Vemar Zephir has higher quality, more features, style and function than you would expect in a helmet twice the price.

Engineered in Italy and manufactured in China to the USA motorcyclist specific DOT safety standards.

Five (5) year warranty from manufacturing date, which equates to the full usable life of the helmet.

The shell shape features excellent aerodynamic characteristics, a superb field of view and great ventilation.

The Zephir features a mid-oval shell shape which offers a more generous fit front to back and more snug fit ear to ear.

Ready for easy installation of Bluetooth headsets with recessed areas throughout the liner.

Communication device compatible. Recessed areas for cords and speakers ensure comfort and an easy install and set up.

Every Vemar helmet comes with a high quality helmet bag and a detailed user guide.



MARK GRAPHIC BLACK/WHITE/RED	
VES-ZPMK-Z015-2XS	SIZE XS
VES-ZPMK-Z015-3S	SIZE S
VES-ZPMK-Z015-4M	SIZE M
VES-ZPMK-Z015-5L	SIZE L
VES-ZPMK-Z015-6XL	SIZE XL
VES-ZPMK-Z015-7XXL	SIZE XXL



Street Fighter



# Zephir

Graphics | Solids

**ARK GRAPHIC  
MATTE BLACK/YELLOW**

VES-ZPMK-Z016-2XS	SIZE XS
VES-ZPMK-Z016-3S	SIZE S
VES-ZPMK-Z016-4M	SIZE M
VES-ZPMK-Z016-5L	SIZE L
VES-ZPMK-Z016-6XL	SIZE XL
VES-ZPMK-Z016-7XXL	SIZE XXL



**MARK GRAPHIC  
WHITE/BLACK/BLUE**

VES-ZPMK-Z019-2XS	SIZE XS
VES-ZPMK-Z019-3S	SIZE S
VES-ZPMK-Z019-4M	SIZE M
VES-ZPMK-Z019-5L	SIZE L
VES-ZPMK-Z019-6XL	SIZE XL
VES-ZPMK-Z019-7XXL	SIZE XXL



**MARK GRAPHIC  
GRAY/BLACK/WHITE**

VES-ZPMK-Z014-2XS	SIZE XS
VES-ZPMK-Z014-3S	SIZE S
VES-ZPMK-Z014-4M	SIZE M
VES-ZPMK-Z014-5L	SIZE L
VES-ZPMK-Z014-6XL	SIZE XL
VES-ZPMK-Z014-7XXL	SIZE XXL

**SOLID MATTE BLACK**

VES-ZPHR-Z0S-2XS	SIZE XS
VES-ZPHR-Z0S-3S	SIZE S
VES-ZPHR-Z0S-4M	SIZE M
VES-ZPHR-Z0S-5L	SIZE L
VES-ZPHR-Z0S-6XL	SIZE XL
VES-ZPHR-Z0S-7XXL	SIZE XXL



Street Helmets



# Ghibli

Graphics | Solids



- ➔ The visor is compatible with Pinlock® lenses; its silicone seal creates a double wall system between the helmet visor and the Pinlock® lens itself, which is made of a special hydrophilic material that absorbs moisture and assures completely fog-free vision.
- ➔ Ultra-wide viewport visor with scratch resistant treatment.
- ➔ Exterior shell is constructed of a lightweight yet incredibly strong R-3P, reinforced thermo-polymers.
- ➔ 3 adjustable intake vents and multiple rear exhaust ports for completely customized air circulation make up the VKS – Vemar Klima System.
- ➔ Inner liner and cheek pads are manufactured from a technical fiber that provides treatment against odor, fungus and bacteria and extraordinary wicking capabilities that result in enhanced rider comfort.
- ➔ Removable and washable fabric cheek pads, liner and chin curtain.
- ➔ Padded chin strap with caliper buckle system for secure closure.
- ➔ Easily removable and washable cheek pads and liner.

Base Graphic  
Flo Red



The Vemar Ghibli full face helmet is designed for those with safety, comfort and the price tag in mind when choosing their helmet.

Engineered in Italy and manufactured in China to the USA motorcyclist specific DOT safety standards.

Five (5) year warranty from manufacturing date, which equates to the full usable life of the helmet.

The shell shape features excellent aerodynamic characteristics, a superb field of view and great ventilation.

The Ghibli features a mid-oval shell shape which offers a more generous fit front to back and snug fit ear to ear.

Ready for easy installation of Bluetooth headsets with recessed areas throughout the liner.

Every Vemar helmet comes with a high-quality helmet bag and a detailed user guide.

**BASE GRAPHIC | FLO RED**

VES-GHBG-G024-2XS	SIZE XS
VES-GHBG-G024-3S	SIZE S
VES-GHBG-G024-4M	SIZE M
VES-GHBG-G024-5L	SIZE L
VES-GHBG-G024-6XL	SIZE XL
VES-GHBG-G024-7XXL	SIZE XXL



Street Fighter



# Ghibli

Graphics  
Solids

Base Graphic  
Flo Yellow



**BASE GRAPHIC | FLO YELLOW**

VES-GHBG-G020-2XS	SIZE XS
VES-GHBG-G020-3S	SIZE S
VES-GHBG-G020-4M	SIZE M
VES-GHBG-G020-5L	SIZE L
VES-GHBG-G020-6XL	SIZE XL
VES-GHBG-G020-7XXL	SIZE XXL

**BASE GRAPHIC | MATTE WHITE**

VES-GHBG-G019-2XS	SIZE XS
VES-GHBG-G019-3S	SIZE S
VES-GHBG-G019-4M	SIZE M
VES-GHBG-G019-5L	SIZE L
VES-GHBG-G019-6XL	SIZE XL
VES-GHBG-G019-7XXL	SIZE XXL

Base Graphic  
Matte White



Solid  
Matte Black



**SOLID MATTE BLACK**

VES-GHBL-G0S-2XS	SIZE XS
VES-GHBL-G0S-3S	SIZE S
VES-GHBL-G0S-4M	SIZE M
VES-GHBL-G0S-5L	SIZE L
VES-GHBL-G0S-6XL	SIZE XL
VES-GHBL-G0S-7XXL	SIZE XXL

WARNING! No boot, apparel, helmet or other protective device can completely protect you in all foreseeable or unusual accidents. Riding motorcycles, ATVs, and other motorized vehicles is dangerous. In the event of an upset, collision, or other accident, you may be seriously injured or killed, regardless of the type of protective equipment that you are wearing. Do not expect or depend upon your Sidi boot, Motonation apparel, Forcefield Armour, Trilobite apparel or Vemar helmet to prevent or reduce injury in the event of an accident. Under some rare circumstances, the wearing of protective apparel may actually increase your injury. The only way to certainly avoid being injured while riding a motorcycle or other motor sports vehicle is not to ride.



Street Helmets



# Sharki

Graphics



- 3 adjustable intake vents and large rear exhaust port for completely customized air circulation make up the VKS - Vemar Klima system.
- Shell is made of R-3P, reinforced Tre polymers.
- Extra wide viewport to improve vertical visual field and peripheral vision. Visor lock allows secure locking of the visor even at high speed.
- Visor is prepared to fit Pinlock® MaxVision® lenses.
- Enlarged visual field for limitless vertical and peripheral vision.
- Comfortable fitting, drop-down sun visor completely covers the visual field.
- Scratch resistant shield with Pinlock prepared lenses sold separately.
- Easily removable and washable cheek pads and liner.
- Padded chin strap with a lightweight double D-ring closure and safety snap for extra security.
- Modular design with easy open and removable chin bar.

**Hive Graphic**  
**Matte Black/Flo Yellow**



A fantastic modular helmet. The Sharki is designed for those wanting the safety features of a full-face helmet, but with the possibility to move to the comfort of an open face.

Engineered in Italy and manufactured in China to the USA motorcyclist specific DOT safety standards.

Five (5) year warranty from manufacturing date, which equates to the full usable life of the helmet.

A handy slot on the helmet shell and internal recessed areas allows for any type of communication system to be easily installed.

Every Vemar helmet comes with a high quality helmet bag and a detailed user guide.

MATTE BLACK/   FLO YELLOW	
VES-SHHG-S005-2XS	SIZE XS
VES-SHHG-S005-3S	SIZE S
VES-SHHG-S005-4M	SIZE M
VES-SHHG-S005-5L	SIZE L
VES-SHHG-S005-6XL	SIZE XL
VES-SHHG-S005-7XXL	SIZE XXL





# Sharki

Graphics



Hive Graphic  
Matte Black/Flo Orange

MATTE BLACK   FLO ORANGE	
VES-SHHG-S007-2XS	SIZE XS
VES-SHHG-S007-3S	SIZE S
VES-SHHG-S007-4M	SIZE M
VES-SHHG-S007-5L	SIZE L
VES-SHHG-S007-6XL	SIZE XL
VES-SHHG-S007-7XXL	SIZE XXL



Hive Graphic  
Matte Black/Matte Grey

MATTE BLACK   MATTE GREY	
VES-SHHG-S008-2XS	SIZE XS
VES-SHHG-S008-3S	SIZE S
VES-SHHG-S008-4M	SIZE M
VES-SHHG-S008-5L	SIZE L
VES-SHHG-S008-6XL	SIZE XL
VES-SHHG-S008-7XXL	SIZE XXL



WARNING! No boot, apparel, helmet or other protective device can completely protect you in all foreseeable or unusual accidents. Riding motorcycles, ATVs, and other motorized vehicles is dangerous. In the event of an upset, collision, or other accident, you may be seriously injured or killed, regardless of the type of protective equipment that you are wearing. Do not expect or depend upon your Sidi boot, Motonation apparel, Forcefield Armour, Trilobite apparel or Vemar helmet to prevent or reduce injury in the event of an accident. Under some rare circumstances, the wearing of protective apparel may actually increase your injury. The only way to certainly avoid being injured while riding a motorcycle or other motor sports vehicle is not to ride.

Sharki Helmets



# Kona

Graphics | Solids



A Hybrid solution for those riders who are looking for an adventure style helmet with all the comforts of both a modern street helmet and an off road helmet.

Engineered in Italy and manufactured in China to the motorcyclist specific ECE 22.05 standard while also meeting the USA's DOT standard.

Five (5) year warranty from manufacturing date, which equates to the full usable life of the helmet.

Every Vemar helmet comes with a high-quality helmet bag and a detailed user guide.

<b>EXPLORER GRAPHIC MATTE FLO ORANGE</b>	
VED-KNEG-C803-2XS	SIZE XS
VED-KNEG-C803-3S	SIZE S
VED-KNEG-C803-4M	SIZE M
VED-KNEG-C803-5L	SIZE L
VED-KNEG-C803-6XL	SIZE XL
VED-KNEG-C803-7XXL	SIZE XXL



Street



# Kona

Graphics | Solids



**EXPLORER GRAPHIC  
FLO YELLOW**  
VED-KNEG-C805-2XS    SIZE XS  
VED-KNEG-C805-3S    SIZE S  
VED-KNEG-C805-4M    SIZE M  
VED-KNEG-C805-5L    SIZE L  
VED-KNEG-C805-6XL    SIZE XL  
VED-KNEG-C805-7XXL    SIZE XXL

Explorer Graphic  
Flo Yellow



**EXPLORER GRAPHIC  
MATTE WHITE**  
VED-KNEG-C801-2XS    SIZE XS  
VED-KNEG-C801-3S    SIZE S  
VED-KNEG-C801-4M    SIZE M  
VED-KNEG-C801-5L    SIZE L  
VED-KNEG-C801-6XL    SIZE XL  
VED-KNEG-C801-7XXL    SIZE XXL

Explorer Graphic  
Matte White



WARNING! No boot, apparel, helmet or other protective device can completely protect you in all foreseeable or unusual accidents. Riding motorcycles, ATVs, and other motorized vehicles is dangerous. In the event of an upset, collision, or other accident, you may be seriously injured or killed, regardless of the type of protective equipment that you are wearing. Do not expect or depend upon your Sidi boot, Motonation apparel, Forcefield Armour, Trilobite apparel or Vemar helmet to prevent or reduce injury in the event of an accident. Under some rare circumstances, the wearing of protective apparel may actually increase your injury. The only way to certainly avoid being injured while riding a motorcycle or other motor sports vehicle is not to ride.



**SOLID  
MATTE BLACK**  
VED-KONA-MBBK-2XS    SIZE XS  
VED-KONA-MBBK-3S    SIZE S  
VED-KONA-MBBK-4M    SIZE M  
VED-KONA-MBBK-5L    SIZE L  
VED-KONA-MBBK-6XL    SIZE XL  
VED-KONA-MBBK-7XXL    SIZE XXL

Solid  
Matte Black

Street Helmets





Inner liner and cheek pads are manufactured from a technical fiber that provides life-long treatment against odor, fungus and bacteria and extraordinary wicking capabilities that result in enhanced rider comfort.

The exterior shell is constructed of R-3P, reinforced thermo-polymers.

The light weight, comfort and features of the Taku make it a safe and easy to wear helmet for any of your off-road adventures.

Engineered in Italy and manufactured in China to the motorcyclist specific ECE 22.05 standard while also meeting the USA's DOT standard.

Five (5) year warranty from manufacturing date, which equates to the full usable life of the helmet.

Every Vemar helmet comes with a high quality helmet bag, tool to remove visor and a detailed user guide.

SKETCH GRAPHIC  
BLUE/WHITE/RED

VED-TAKU-C717-2XS	SIZE XS
VED-TAKU-C717-3S	SIZE S
VED-TAKU-C717-4M	SIZE M
VED-TAKU-C717-5L	SIZE L
VED-TAKU-C717-6XL	SIZE XL
VED-TAKU-C717-7XXL	SIZE XXL



The Taku includes many enhanced safety features including a specific base shape to complement neck braces.

Sketch Graphic  
Blue/White/Red





# Taku

Graphics | Solids



**BLADE GRAPHIC  
WHITE/NAVY**

VED-TAKU-C723-2XS	SIZE XS
VED-TAKU-C723-3S	SIZE S
VED-TAKU-C723-4M	SIZE M
VED-TAKU-C723-5L	SIZE L
VED-TAKU-C723-6XL	SIZE XL
VED-TAKU-C723-7XXL	SIZE XXL

**BLADE GRAPHIC  
MATTE GRAY/FLO ORANGE**

VED-TAKU-C718-2XS	SIZE XS
VED-TAKU-C718-3S	SIZE S
VED-TAKU-C718-4M	SIZE M
VED-TAKU-C718-5L	SIZE L
VED-TAKU-C718-6XL	SIZE XL
VED-TAKU-C718-7XXL	SIZE XXL

WARNING! No boot, apparel, helmet or other protective device can completely protect you in all foreseeable or unusual accidents. Riding motorcycles, ATVs, and other motorized vehicles is dangerous. In the event of an upset, collision, or other accident, you may be seriously injured or killed, regardless of the type of protective equipment that you are wearing. Do not expect or depend upon your Sidi boot, Motonation apparel, Forcefield Armour, Trilobite apparel or Vemar helmet to prevent or reduce injury in the event of an accident. Under some rare circumstances, the wearing of protective apparel may actually increase your injury. The only way to certainly avoid being injured while riding a motorcycle or other motor sports vehicle is not to ride.



**SKETCH GRAPHIC  
BLACK/SILVER/YELLOW MATTE**

VED-TAKU-C715-2XS	SIZE XS
VED-TAKU-C715-3S	SIZE S
VED-TAKU-C715-4M	SIZE M
VED-TAKU-C715-5L	SIZE L
VED-TAKU-C715-6XL	SIZE XL
VED-TAKU-C715-7XXL	SIZE XXL

**INVASION GRAPHIC  
WHITE/BLACK**

VED-TAKU-C712-2XS	SIZE XS
VED-TAKU-C712-3S	SIZE S
VED-TAKU-C712-4M	SIZE M
VED-TAKU-C712-5L	SIZE L
VED-TAKU-C712-6XL	SIZE XL
VED-TAKU-C712-7XXL	SIZE XXL

helmets



Taku

Graphics | Solids



EYE GRAPHIC BLACK/YELLOW

VED-TAKU-C706-2XS	SIZE XS
VED-TAKU-C706-3S	SIZE S
VED-TAKU-C706-4M	SIZE M
VED-TAKU-C706-5L	SIZE L
VED-TAKU-C706-6XL	SIZE XL
VED-TAKU-C706-7XXL	SIZE XXL

EYE GRAPHIC  
BLUE/WHITE

VED-TAKU-C709-2XS	SIZE XS
VED-TAKU-C709-3S	SIZE S
VED-TAKU-C709-4M	SIZE M
VED-TAKU-C709-5L	SIZE L
VED-TAKU-C709-6XL	SIZE XL
VED-TAKU-C709-7XXL	SIZE XXL



EYE GRAPHIC  
BLACK/LIGHT BLUE/ORANGE

VED-TAKU-C701-2XS	SIZE XS
VED-TAKU-C701-3S	SIZE S
VED-TAKU-C701-4M	SIZE M
VED-TAKU-C701-5L	SIZE L
VED-TAKU-C701-6XL	SIZE XL
VED-TAKU-C701-7XXL	SIZE XXL

SOLID MATTE BLACK

VED-TAKU-MTBK-2XS	SIZE XS
VED-TAKU-MTBK-3S	SIZE S
VED-TAKU-MTBK-4M	SIZE M
VED-TAKU-MTBK-5L	SIZE L
VED-TAKU-MTBK-6XL	SIZE XL
VED-TAKU-MTBK-7XXL	SIZE XXL

WARNING! No boot, apparel, helmet or other protective device can completely protect you in all foreseeable or unusual accidents. Riding motorcycles, ATVs, and other motorized vehicles is dangerous. In the event of an upset, collision, or other accident, you may be seriously injured or killed, regardless of the type of protective equipment that you are wearing. Do not expect or depend upon your Sidi boot, Motonation apparel, Forcefield Armour, Trilobite apparel or Vemar helmet to prevent or reduce injury in the event of an accident. Under some rare circumstances, the wearing of protective apparel may actually increase your injury. The only way to certainly avoid being injured while riding a motorcycle or other motor sports vehicle is not to ride.

helmets



# Vemar Spares

## Zephir Spare Parts

Liner and Cheekpad Set  
VES-ZZPR-CPKT-2XS Size XS  
VES-ZZPR-CPKT-3S Size S  
VES-ZZPR-CPKT-4M Size M  
VES-ZZPR-CPKT-5L Size L  
VES-ZZPR-CPKT-6XL Size XL  
VES-ZZPR-CPKT-7XXL Size XXL

Shield Fitting Kit w/Screws  
VES-ZZPR-SH-KT

Clear Shield  
VES-ZZPR-VI-CL

## Ghibli Spare Parts

Liner and Cheekpad Set  
VES-ZGBL-CPKT-2XS Size XS  
VES-ZGBL-CPKT-3S Size S  
VES-ZGBL-CPKT-4M Size M  
VES-ZGBL-CPKT-5L Size L  
VES-ZGBL-CPKT-6XL Size XL  
VES-ZGBL-CPKT-7XXL Size XXL

Shield Fitting Kit w/Screws  
VES-ZGBL-SH-KT

Replacement Shield  
VES-ZGBL-VI-CL Clear  
VES-ZGBL-VI-DK Dark

## Taku Spare Parts

Liner and Cheekpad Set  
VED-ZTKU-CPKT-2XS Size XS  
VED-ZTKU-CPKT-3S Size S  
VED-ZTKU-CPKT-4M Size M  
VED-ZTKU-CPKT-5L Size L  
VED-ZTKU-CPKT-6XL Size XL  
VED-ZTKU-CPKT-7XXL Size XXL

Visor Fitting Kit w/Screws  
VED-ZTKU-PK-KT

Replacement Visors  
Eye Graphic Black/Yellow  
VED-ZTKU-PKEG-C706  
Invasion Graphic White/Black  
VED-ZTKU-PKIG-C712  
Solid Matte Black  
VED-ZTKU-PKSC-MB  
EYE Graphic Black/Light Blue/Orange  
VED-ZTKU-PKEG-C701  
EYE Graphic Blue/White  
VED-ZTKU-PKEG-C709  
Sketch Graphic Black/Silver/Yellow Matte  
VED-ZTKU-PKSG-C715  
Sketch Graphic Black/White/Red  
VED-ZTKU-PKSG-C717

## Sharki Spare Parts

Liner and Cheekpad Set  
VES-ZSHK-CPKT-2XS Size XS  
VES-ZSHK-CPKT-3S Size S  
VES-ZSHK-CPKT-4M Size M  
VES-ZSHK-CPKT-5L Size L  
VES-ZSHK-CPKT-6XL Size XL  
VES-ZSHK-CPKT-7XXL Size XXL

Sharki Conversion Kit  
Matte Black  
VES-ZSHK-SCK-MB

## Zephir/Sharki Spare Parts

SHIELD FITTING KIT W/SCREWS  
VES-ZZPR-SH-KT  
CLEAR SHIELD  
VES-ZZPR-VI-CL

## Taku/Kona Spare Parts

Liner and Cheekpad Set  
VED-ZTKU-CPKT-2XS Size XS  
VED-ZTKU-CPKT-3S Size S  
VED-ZTKU-CPKT-4M Size M  
VED-ZTKU-CPKT-5L Size L  
VED-ZTKU-CPKT-6XL Size XL  
VED-ZTKU-CPKT-7XXL Size XXL

## Merchandising



### Slatwall Shelf

208505

No Charge to "Partner" Dealers.



### Vemar Decal

208504 Large 46x17cm

## Storm Spare Parts

Replacement Shields  
Clear, antiscratch/fog retardant  
VES-ZSTO-SH-00  
Dark tinted 75%, antiscratch/fog retardant  
VES-ZSTO-SH-75



### Sew-On Patch

208500

Liner and Cheekpad Set  
VES-ZSTO-CP-3S Size S  
VES-ZSTO-CP-4M Size M  
VES-ZSTO-CP-5L Size L  
VES-ZSTO-CP-6XL Size XL  
VES-ZSTO-CP-7XXL Size XXL

## Eclipse Spare Parts



Replacement Shields  
Clear, antiscratch/fog retardant  
VES-ZE11-SH-00



Removable Cheekpads  
VES-ZECL-CP-1XXS Size XXS  
VES-ZECL-CP-2XS Size XS  
VES-ZECL-CP-3S Size S  
VES-ZECL-CP-4M Size M  
VES-ZECL-CP-5L Size L  
VES-ZECL-CP-6XL Size XL  
VES-ZECL-CP-7XXL Size XXL  
VES-ZECL-CP-8XXXL Size XXXL



Removable Neck-padding  
VES-ZECL-NP-4M Size XXS-M  
VES-ZECL-NP-5L Size L  
VES-ZECL-NP-6XL Size XL-XXL



Removable Inner Lining  
VES-ZECL-LI-1XXS Size XXS  
VES-ZECL-LI-2XS Size XS  
VES-ZECL-LI-3S Size S  
VES-ZECL-LI-4M Size M  
VES-ZECL-LI-5L Size L  
VES-ZECL-LI-6XL Size XL  
VES-ZECL-LI-7XXL Size XXL  
VES-ZECL-LI-8XXXL Size XXXL

## VRX9 Spare Parts

Replacement Visors Graphic White  
VED-ZVRX9-VI-SPRD Red/Black  
VED-ZVRX9-VI-TRNV White/Black NV  
VED-ZVRX9-VI-MBGR Energy  
VED-ZVRX9-VI-TUSA Team USA



Cheekpads  
VED-ZVRX9-CP-1XXS Size XXS  
VED-ZVRX9-CP-2XS Size XS  
VED-ZVRX9-CP-3S Size S  
VED-ZVRX9-CP-4M Size M  
VED-ZVRX9-CP-5L Size L  
VED-ZVRX9-CP-6XL Size XL  
VED-ZVRX9-CP-7XXL Size XXL



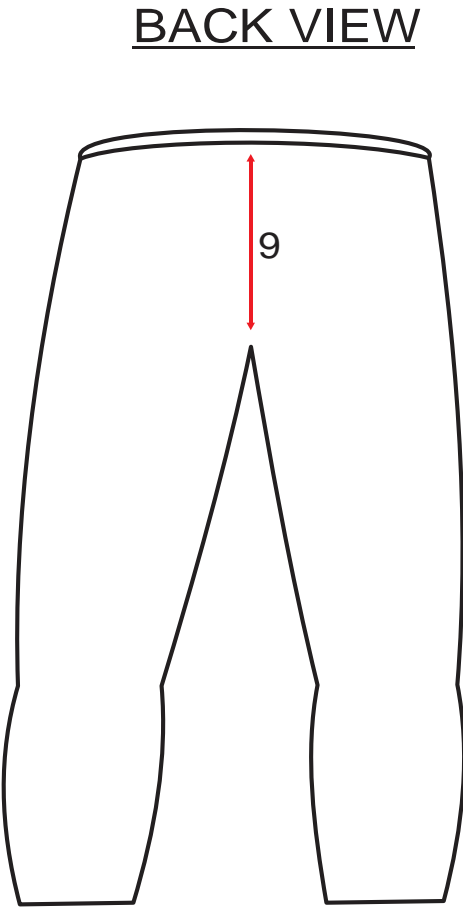
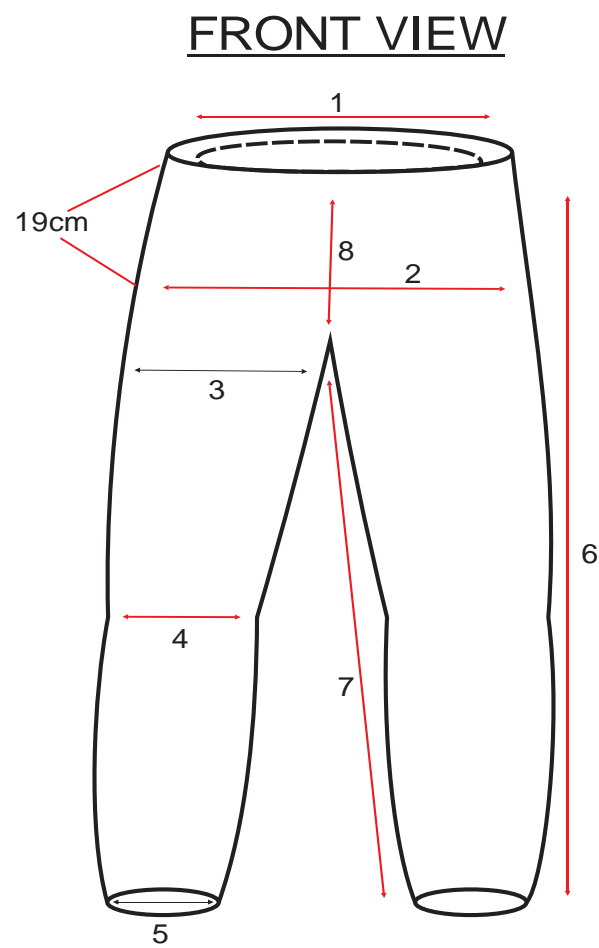


SIZE CHART

STYLE No. 661 Mens

Party : Trilobite

No.	Sizes	30	32	34	36	38	40	42	44	46
1	WAIST BELT WEIST BODY	77	82	87	92	97	102	107	112	117
2	HIP (19CM FROM WEIST)	97	102	107	112	117	122	127	132	137
3	THIGH (10CM FROM CRUTCH)	54	56	58	60	62	64	66	68	70
4	KNEE CUT	49	50	51	52	53	54	55	56	57
5	ANKLE	43.5	44	44.5	45	45.5	46	46.5	47	47.5
7	INSEAM SHORT	79	79	79	79	79	79	79	79	79
	INSEAM REGULAR	84	84	84	84	84	84	84	84	84
	INSEAM LONG	89	89	89	89	89	89	89	89	89
8	FRONTRAISE WITHOUT WAIST BAND	23.5	24	24.5	25	25.5	26	26.5	27	27.5
9	BACKRAISE WITHOUT WAIST BAND	37	37.5	38	38.5	39	39.5	40	40.5	41

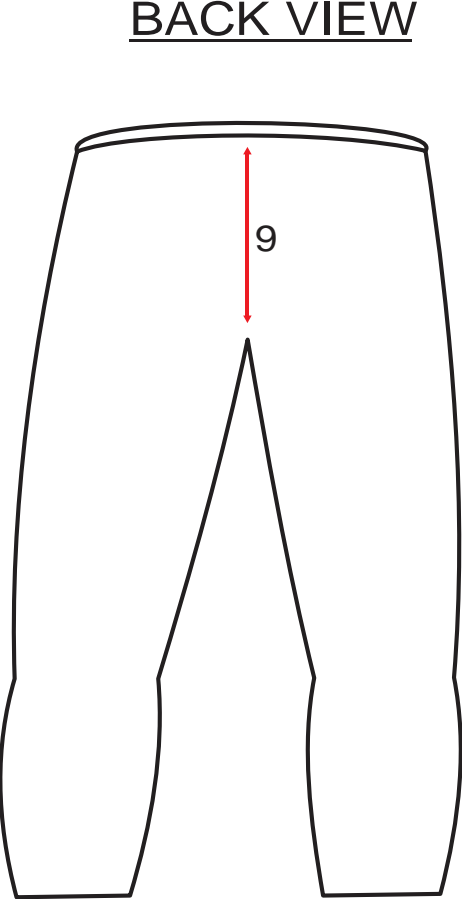
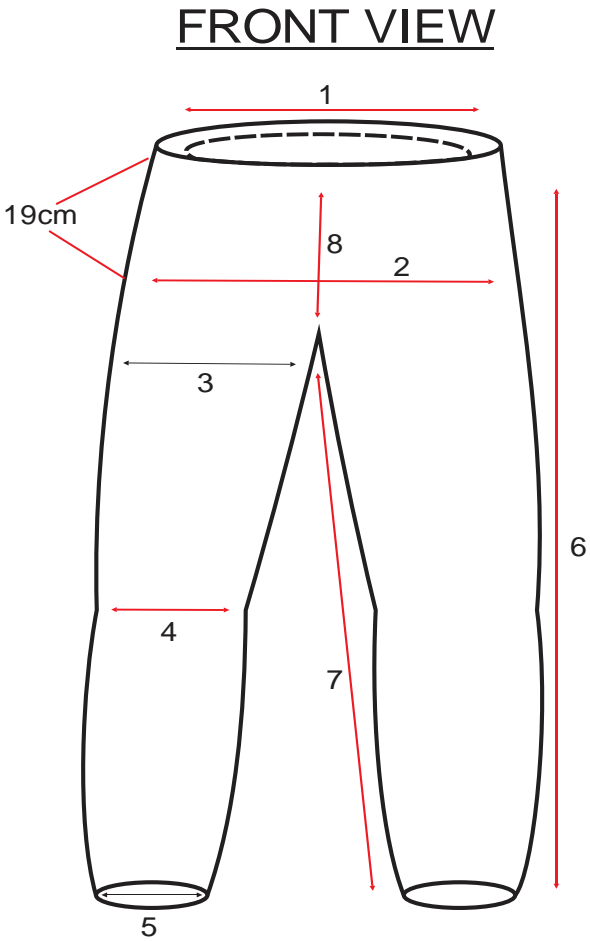


SIZE CHART

STYLE No. 661 Ladies

Party : Trilobite

No.	Sizes	26	28	30	32	34	36			
1	WAIST BELT WEIST BODY	67	72	77	82	87	92			
2	HIP (19CM FROM WEIST)	91	95	100	105	110	115			
3	THIGH (10CM FROM CRUTCH)	50	52	54	56	58	60			
4	KNEE CUT	43	44	45	46	47	48			
5	ANKLE	40.5	41	41.5	42	42.5	43			
7	INSEAM SHORT	79	79	79	79	79	79			
	INSEAM REGULAR	84	84	84	84	84	84			
	INSEAM LONG	89	89	89	89	89	89			
8	FRONTRAISE WITHOUT WAIST BAND	20	20.5	21	21.5	22	22.5			
9	BACKRAISE WITHOUT WAIST BAND	36.5	37	37.5	38	38.5	39			





SIZE CHART

STYLE No. 662

Party : Trilobite

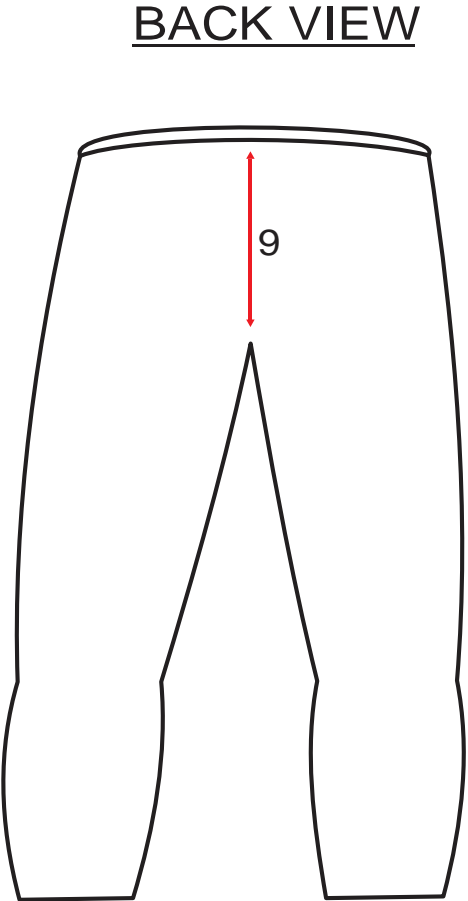
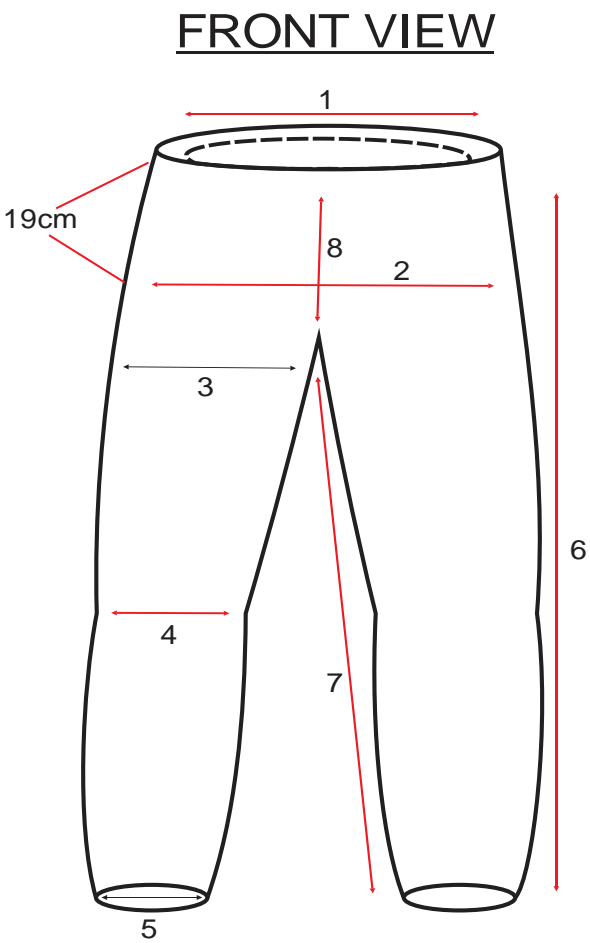
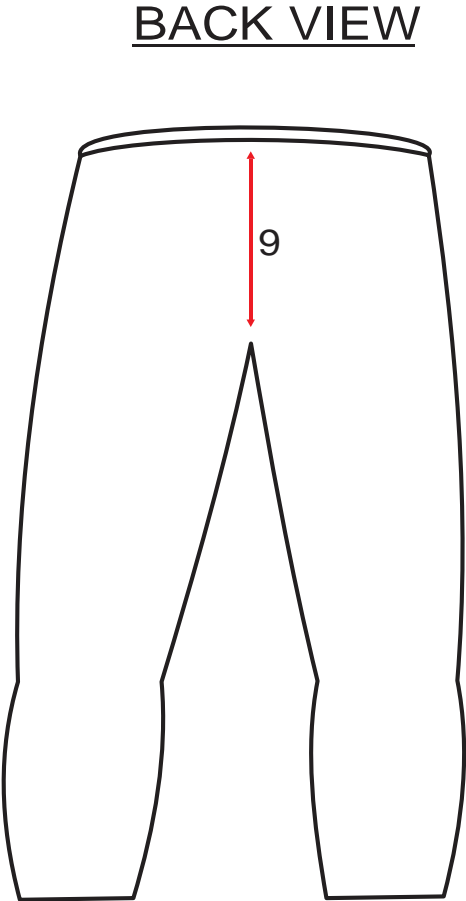
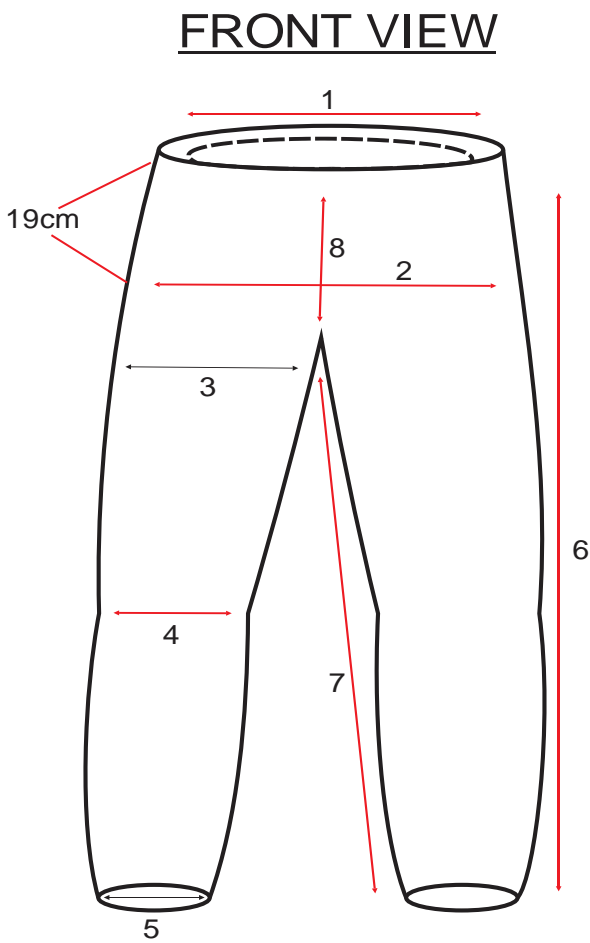
NO	SIZE	28	30	32	34	36	38	40	42	44
1	WAIST BELT WEIST BODY	73	78	83	88	93	98	103	108	113
2	HIP (19CM FROM WEIST)	95	100	105	110	115	120	125	130	135
3	THIGH (10CM FROM CRUTCH)	54	56	58	60	62	64	66	68	70
4	KNEE CUT	45	46	47	48	49	50	51	52	53
5	ANKLE	40.5	41	41.5	42	42.5	43	43.5	44	44.5
6	INSEAM	81	81	81	81	81	81	81	81	81
7	FRONTRAISE WITHOUT WAIST BAND	21.5	22	22.5	23	23.5	24	24.5	25	25.5
8	BACKRAISE WITHOUT WAIST BAND	34.5	35	35.5	36	36.5	37	37.5	38	38.5

SIZE CHART

STYLE No. 663

Party : Trilobite

NO	SIZE	28	30	32	34	36	38	40	42	44
1	WAIST BELT WEIST BODY	75	80	85	90	95	100	105	110	115
2	HIP (19CM FROM WEIST)	95	100	105	110	115	120	125	130	135
3	THIGH (10CM FROM CRUTCH)	56	58	60	62	64	66	68	70	72
4	KNEE CUT	49	50	51	52	53	54	55	56	57
5	ANKLE	43.5	44	44.5	45	45.5	46	46.5	47	47.5
6	INSEAM	84	84	84	84	84	84	84	84	84
7	FRONTRAISE WITHOUT WAIST BAND	20.5	21	21.5	22	22.5	23	23.5	24	24.5
8	BACKRAISE WITHOUT WAIST BAND	34.5	35	35.5	36	36.5	37	37.5	38	38.5





SIZE CHART

STYLE No. 664

Party : Trilobite

NO	SIZE	28	30	32	34	36	38	40	42	44
1	WAIST BELT WEIST BODY	72	77	82	87	92	97	102	107	112
2	HIP (19CM FROM WEIST)	99	104	109	114	119	124	129	134	139
3	THIGH (10CM FROM CRUTCH)	56	58	60	62	64	66	68	70	72
4	KNEE CUT	49	50	51	52	53	54	55	56	57
5	ANKLE	42.5	43	43.5	44	44.5	45	45.5	46	46.5
6	INSEAM	81	81	81	81	81	81	81	81	81
7	FRONTRAISE WITHOUT WAIST BAND	25.5	26	26.5	27	27.5	28	28.5	29	29.5
8	BACKRAISE WITHOUT WAIST BAND	35.5	36	36.5	37	37.5	38	38.5	39	39.5

SIZE CHART

STYLE No. 665

Party : Trilobite

NO	SIZE	28	30	32	34	36	38	40	42	44
1	WAIST BELT WEIST BODY	77	82	87	92	97	102	107	112	117
2	HIP (19CM FROM WEIST	101	106	111	116	121	126	131	136	141
3	THIGH (10CM FROM CRUTCH)	56	58	60	62	64	66	68	70	72
4	KNEECUT	45	46	47	48	49	50	51	52	53
5	ANKLE	42.5	43	43.5	44	44.5	45	45.5	46	46.5
6	INSEAM	81	81	81	81	81	81	81	81	81
7	FRONTRAISE WITHOUT WAIST BAND	21.5	22	22.5	23	23.5	24	24.5	25	25.5
8	BACKRAISE WITHOUT WAIST BAND	32.5	33	33.5	34	34.5	35	35.5	36	36.5

