

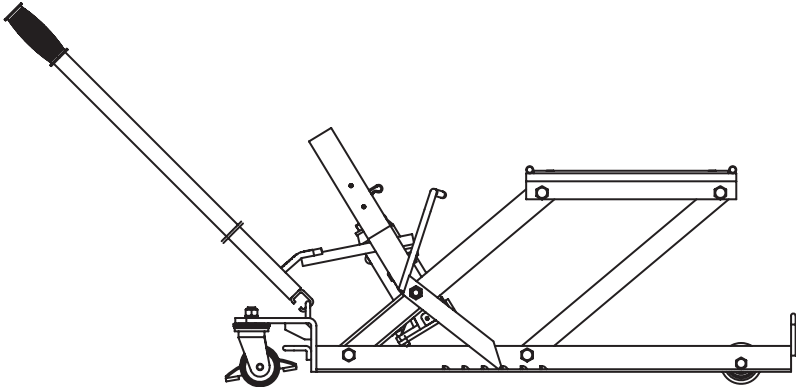
# Torin® **BIG RED JACKS**

Operator's Manual

## **Motorcycle / A.T.V. Jack**

**Model**

1,500 Lbs (680kg)..... T64017



**WARNING:** Before using this appliance, read this operator's Manual and follow all its Safety Rules and Operating Instructions.

- Safety
- Operation
- Maintenance

## SAFETY INSTRUCTIONS

### WARNING !

Study, understand and follow all instructions before operating this device. Do not exceed rated capacity. This jack is rated for a maximum of 1500 pound loads. Use only on hard, level surfaces. Lift only on those areas of the conveyance as specified by its manufacturer. Center load on lift pads. Immediately after lifting load, ensure lift platform locking device is engaged. Secure load with appropriate restraint device. Use tie down straps to secure load to the jack. Failure to heed these warnings may result in personal injury and/or property damage. Lifting device only. Immediately after lifting, support the vehicle with appropriate means.

## SAFETY MESSAGES

Owners and operators are responsible to read, study and revise all operating instructions before using the Motorcycle / ATV Jack. It is important that the owner and/or operators retain these instructions for future reference. Both, the owner and operators must understand and comprehend the product and safety guidelines that will be mentioned through this manual.

1. Use of this product is limited to lifting, lowering and transporting in the lowered position, loads consisting of a single motorcycle, ATV, riding lawn mower or similarly sized motorized conveyance whose lift points are compatible with the lift pads of the jack. Incompatibility is evident when the loaded conveyance wobbles, feels unstable, and/or does not set securely on the lift pad assembly.
2. Restraining an incompatible load will not make the load secure and may cause unexpected loss of load.
3. Never work on, around or under a load that is not secured and stable. Before moving, lower the load to the lowest possible point.
4. Keep operators and bystanders head, hands and feet away from lift members when raising and lowering.
5. No alterations shall be made to this product because of the dangers associated to the misuse of this product.
6. Only attachment and/or adapters supplied by the manufacturer shall be used.

## ASSEMBLY INSTRUCTIONS

### Figure 1.

Parts  
Carton contains:  
Description

Frame base	1 PC
Hydraulic ram	1 PC
Safety arm	1 PC
Bolt	2 PC
Wrench	1 PC

Assembly instruction diagrams

### Figure 2.

Raise the front ram support. With the foot pedal assembly oriented toward the outside, insert the hydraulic ram assembly into the frame. Slide the ram cap inside the bracket on the ram support and align the ram base with guides in the frame assembly.

### Figure 3.

Notice that the ram base has an indented position that must be located in front of the ram securing bolt. Use wrench to tighten the ram bolt M8x14. Use wrench to tighten the ram bolt M8x25.

### Figure 4.

Remove two pin clips from the back support arm, assembly with the safety arm, then tighten the clips.

### Figure 5.

Finish all the assembly process.

1. This is the position that is used to place the jack under the load.
2. Arrows show the loops at frame ends that are used to carry the jack or to move the jack.

### Figure 6.

Use caution when moving the jack, if loaded.

This photo shows the release valve. Close the release valve before lifting. To close, move the valve clockwise.

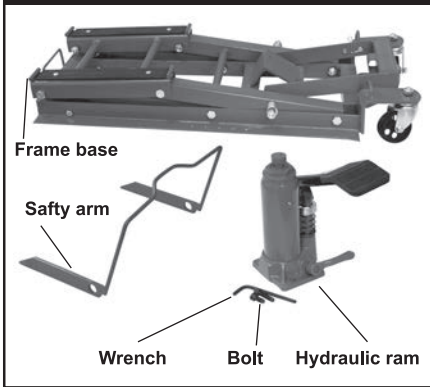
### Figure 7.

Pump the foot pedal to raise the load. Also shown is one of the two safety arms. When the load is fully raised, lift the outer end of the safety arms to engage the raised tabs of the frame. This will prevent accidental lowering. Before lowering the load, push down on the outer ends of the safety arms to disengage them.

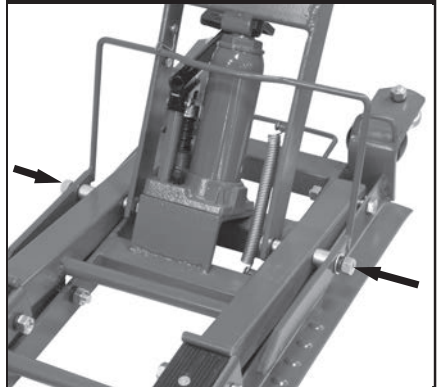
### Figure 8.

The arrows show the "loops" at the ends of the frame. These are used to hold the down straps that are looped through the load when the jack is raised. To lower the jack, raise the safety arms, then turn the release valve counterclockwise slowly. Unfasten the hold down straps.

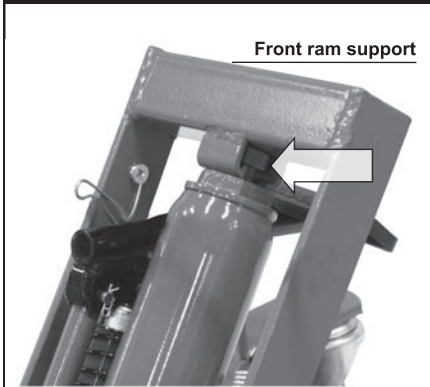
**FIGURE 1**



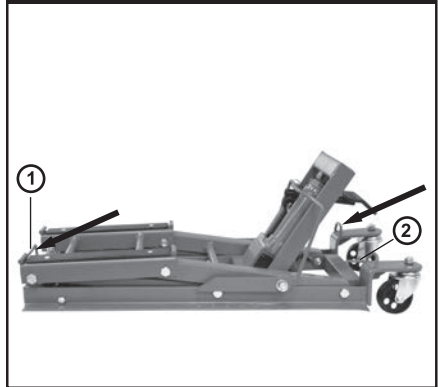
**FIGURE 4**



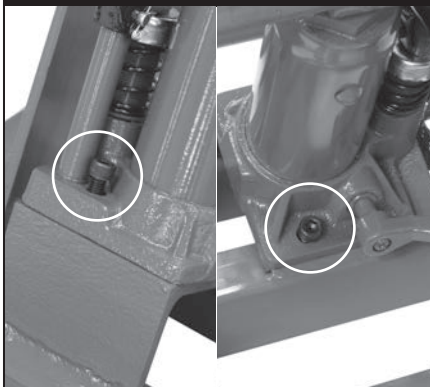
**FIGURE 2**



**FIGURE 5**



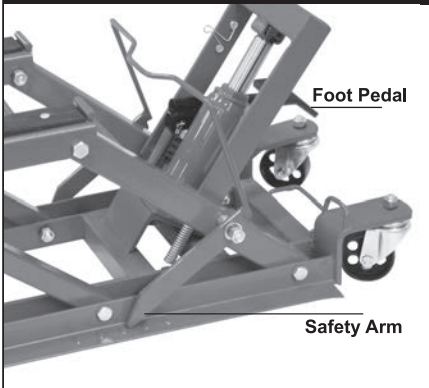
**FIGURE 3**



**FIGURE 6**



**FIGURE 7**



**FIGURE 8**



## OPERATION

### Before operation

The owner and/or operator shall have an understanding of the product and safety operating instructions before operating the Motorcyle / ATV Jack. Safety Information shall be read to and discuss with the operator in the operator's native language by the purchaser / owner or his designee, making sure that the operator comprehends their contents.

### Inspection

- Visual inspection shall be made before each use of the Motorcyle/ ATV Jack by checking for abnormal conditions, such as cracked welds, leaks, and damaged, loose, or missing parts.
- Other inspections shall be made per product operating instructions.
- Each Motorcyle / ATV Jack shall be inspected immediately if the lift is believed to have been subjected to an abnormal load or shock. It is recommended that an annual inspection be made by a manufacturer's or supplier's authorized repair facility

## OPERATION

- Owners and / or operators should be aware that repair of this equipment may require specialized knowledge and facilities. It is recommended that an annual inspection of the Motorcyle / ATV Jack be made by a manufacturer's or supplier's authorized repair facility and that any defective parts, decals, or safety labels or signs be replaced with manufacturer's or supplier's specified parts. A list of authorized repair facilities is available from the manufacturer or supplier.

### Note:

Any Motorcyle / ATV Jack that appears to be damaged in any way, is found to be worn or operates abnormally **SHALL BE REMOVED FROM SERVICE UNTIL REPAIRED**. It is recommended that necessary repairs be made by a manufacturer's or supplier's authorized repair facility if repairs are permitted by the manufacturer or supplier.

### To raise the load

- Place jack on a hard level surface.
- To avoid item from slipping during the raising operation, **ALWAYS** first determine the center of the weight load.
- Place the jack under the item so that the Lift Saddle is positioned under the center of the weight load.
- Pump the foot pedal until the lift saddle comes in contact with the load to be lifted; proceed to lock wheel casters. Always check to be sure that the saddle and the load are positioned correctly before raising the jack.
- Use foot pedal to raise load; **BE SURE** that safety lock is secured in one of three stated lock positions once desired height is reached.
- Apply tie-down straps once load has been raise to desired height. Thoroughly tighten straps.
- Stabilize loaded jack on a hard surface for maximum balance by adjusting locking screws.

### To tie down straps (not included)

- DO NOT** use tie down strap for towing vehicles or to hold or suspend human weight.
- DO NOT** use extension bar lever, pliers or any tools to operate as a handle. Use hand power only.
- Protect strap webbing from sharp edges, heat and acid. Replace strap webbing if it is cut, worn or damaged. Inspect strap webbing, hooks and hardware before each use.

## MAINTENANCE

**IMPORTANT:** Before performing any maintenance of the bottle jack **ALWAYS** deattach from the frame and place on a level surface.

### Air Purging Instructions

With the ram fully retracted, locate and remove the oil filter plug. Inset the foot pedal into the sleeve of Hydraulic Ram, then pump 6 to 8 strokes. This will help release any pressurized air which may be trapped in the reservoir. Be sure that the oil level is just below the oil filler plug hole. Reinstall the oil filler plug. Sometimes during shipment and handling, air may become trapped in the hydraulic system causing poor or no lifting.

## CHECKING THE OIL

**IMPORTANT:** When adding or replacing oil, ALWAYS use a good grade of hydraulic jack oil. NEVER use brake fluid, alcohol, glycerine, detergent motor oil or dirty oil of any kind. Improper oil usage will cause serious internal damage to jack.

### Adding Oil

With ram fully lowered and jack on level ground, remove oil filler plug. Add oil if level is more than a/2" below hole.

### Replacing Oil

Oil should be replaced at least once every year. To drain oil, remove oil filler plug and release valve. BE VERY CAREFUL to not allow dirt or any foreign matter into the system.

## CHECKING THE OIL

### Lubrication

Put grease in fitting on base and lubricate lifting arm spindle with oil when need.

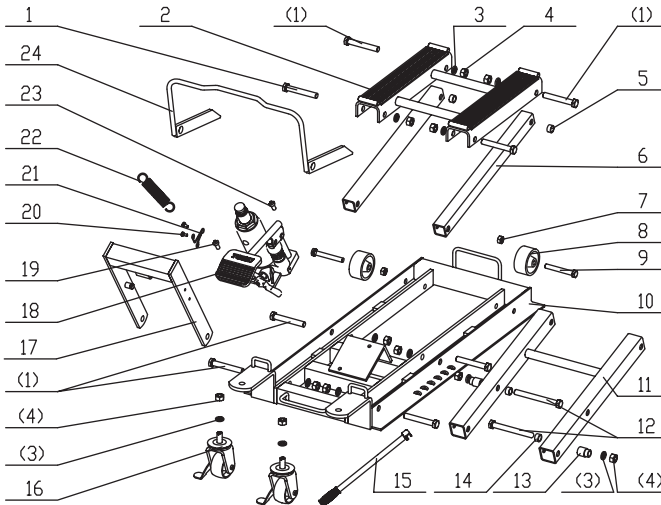
### Rust Prevention

Clean and wipe with an oily cloth the piston ram and pump piston every 3 months or when signs of rust or corrosion appear. When not in use, always leave the saddle and pump piston in the completely down position.

## TROUBLESHOOTING

Trouble	Cause	Remedy
Jack will not low completely	1. Air in hydraulic system 2. Release valve stuck	1. Purge air from hydraulic system 2. Transfer weight load and clean valve
Jack will not hold weight	1. Release valve in open position	1. Close release valve tightly
Jack will not lift to full height	1. Air in hydraulic system 2. Dirty oil 3. Release valve not completely closed	1. Purge air from hydraulic system 2. Change oil. Use SAE 5W 3. Close release valve tightly
Jack will not lift load	1. Excessive weight 2. Release valve in open position 3. Oil level low	1. Decrease weight or change to higher capacity jack 2. Turn valve clockwise and tighten 3. Fill to recommended level

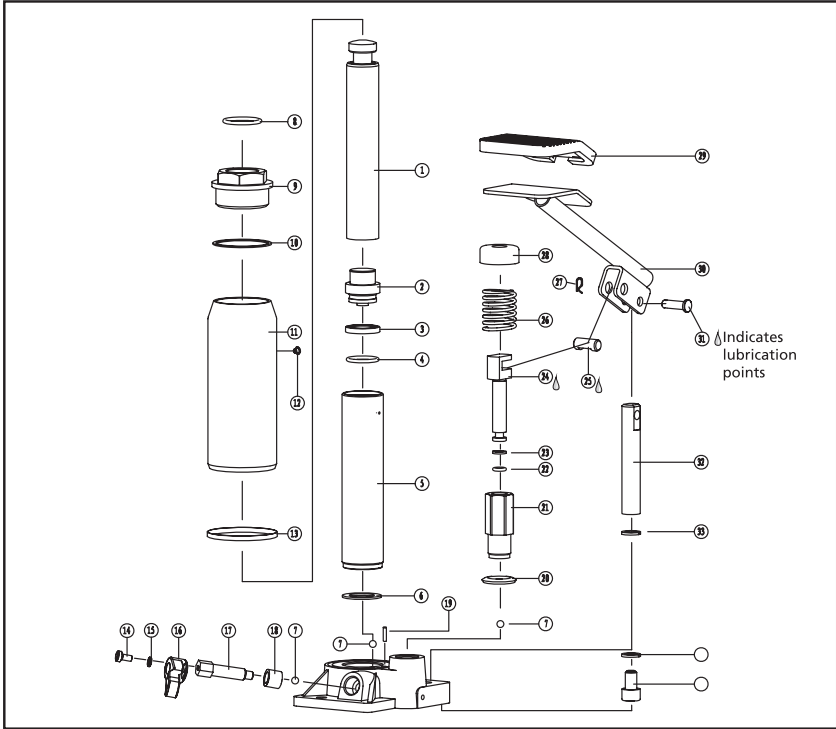
## PARTS LIST



Item	Name	QTY	Item	Name	QTY
1	Bolt M12x75	8	13	Outer sleeve	2
2	Supporting board assembly	1	14	Inner sleeve	2
3	Washer 12	12	15	Handle	1
4	Nut M12	12	16	Rear wheel	2
5	Sleeve	4	17	Top board ass	1
6	Supporting arm	2	18	Power unit assembly	1
7	Nut M10	2	19	Screw M8x14	1
8	Front wheel	2	20	Screw M6x10	2
9	Bolt M10x75	2	21	Spring	1
10	Base	1	22	Return spring	1
11	Rear supporting assembly	1	23	Bolt M8x25	1
12	Bolt M12x100	2	24	safety frame	1

# MAINTENANCE

1. To add oil, place jack in upright position with pump plunger down. Remove filler plug and add hydraulic jack oil to level of filler hole. Be sure oil is clean and be careful to keep dirt out of jack. **DO NOT USE BRAKE, SHOCK ABSORBER, OR TRANSMISSION FLUID.**
2. Periodically lubricate the points indicated with SAE 30 oil. Keep jack clean.
3. Occasionally check extension screw and pump plunger for corrosion. Keep these parts lubricated to prevent corrosion.
4. When not in use, store jack in upright position in a dry location with pump plunger and extension screw in lowest position and release valve closed.



Part No.	Name	QTY.	Part No.	Name	QTY.	Part No.	Name	QTY.
1	piston rod	1	15	spring washer	1	29	rubber pad	1
2	piston	1	16	release valve handle	1	30	peddle	1
3	O-ring	1	17	release valve rod	1	31	shaft	1
4	O-ring	1	18	sealing	1	32	connecting rod	1
5	cylinder	1	19	filter	1	33	washer	2
6	O-ring	1	20	washer	1	34	bolt	1
7	steel bolt	1	21	pump cylinder	1			
8	O-ring	1	22	O-ring	1			
9	top cap nut	1	23	washer	1			
10	sealing	1	24	pump piston	1			
11	oil reservoir	1	25	shaft	1			
12	oil filler plug	1	26	spring	1			
13	O-ring	1	27	pin	1			
14	screw	1	28	spring holder	1			