

## Crashbar

Thank you for choosing this premium product from SW-MOTECH. Please visit our webshop for additional information, such as application charts and PDF mounting instructions. Any other documents that may be required (e.g. ABE certifications), are also available for download at our webshop.

Installation and / or maintenance of this product require good technical understanding! For your own safety SW-MOTECH recommends having installation and / or servicing carried out by a specialist workshop! SW-MOTECH assumes no liability for damage caused by improper installation and / or maintenance work!

Carefully follow all the directions given in the mounting instructions and pay attention to all relevant information in the vehicle manual during assembly. Nonconformance can lead to vehicle damage or even endanger the driver! These mounting instructions are written based on our current state of knowledge. Legal requirements for accuracy do not exist.

This product was developed for vehicles in their factory setting. Compatibility with original accessory parts or other manufacturers' accessory parts is not guaranteed. Furthermore, BEFORE installing this product, make sure that all moving parts (e.g. the chain) are in the original state of maintenance. Installed accessories can change the driving behaviour and / or stability of your vehicle.

### GENERAL INFORMATION

Observe the country-specific regulations concerning vehicle registration / operation as well as TÜV regulations if applicable. If required, register installed parts in the vehicle documents through an appropriate inspection authority.

**PREPARATION:** Read the mounting instructions carefully and make sure that all items of the parts list are included. Make sure that your vehicle is parked safely and cannot fall over. Turn off the engine and remove the ignition key. Let the motor / exhaust cool off if necessary. Disconnect the vehicle battery when working on the electrical system. Use appropriate tools. Have another person to help you.

**MOUNTING:** All parts and connections removed from the vehicle must be reinstalled in accordance with the vehicle manufacturers' specifications or replaced by parts delivered by SW-MOTECH. Secure all threads, unless otherwise specified, with medium-strength liquid thread locker.

**Torque specifications undefined by SW-MOTECH must be obtained from the vehicle manufacturer or by a specialist workshop!**

**FUNCTION CHECK:** After installation make sure that all parts and connections previously removed are properly replaced. Also make sure that no moving parts are obstructed and no function of the vehicle is hindered in any way. Cables and hoses must not rub and / or be pinched. Before starting to ride, perform a comprehensive check of all functions. After the first 50 km and then at regular intervals, check the tightening torque of all screw connections and the proper fit of the product.

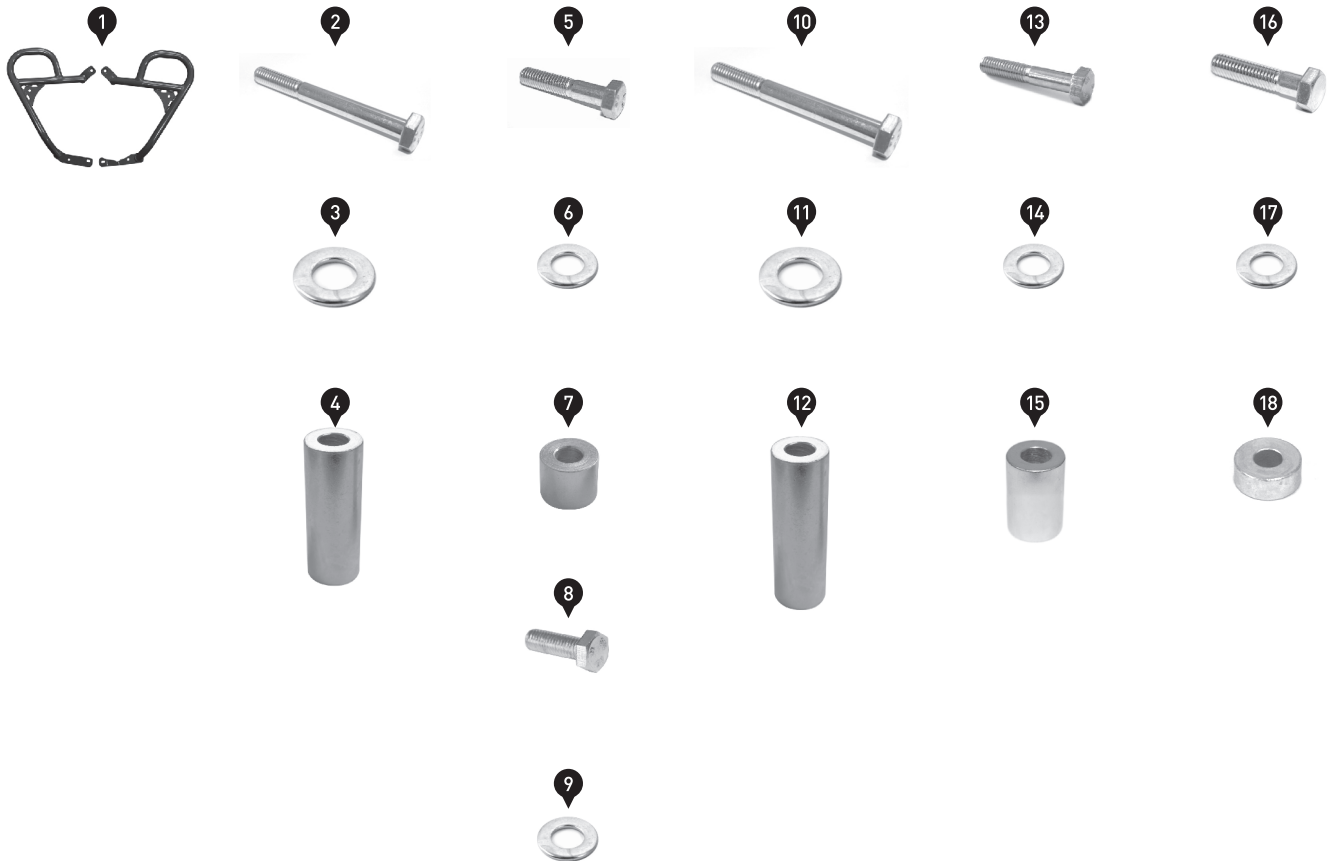
### PRODUCT SPECIFIC INFORMATION

**ATTENTION:** While cornering at extrem lean angles, ground clearance can be reduced by using this product!

## Parts List

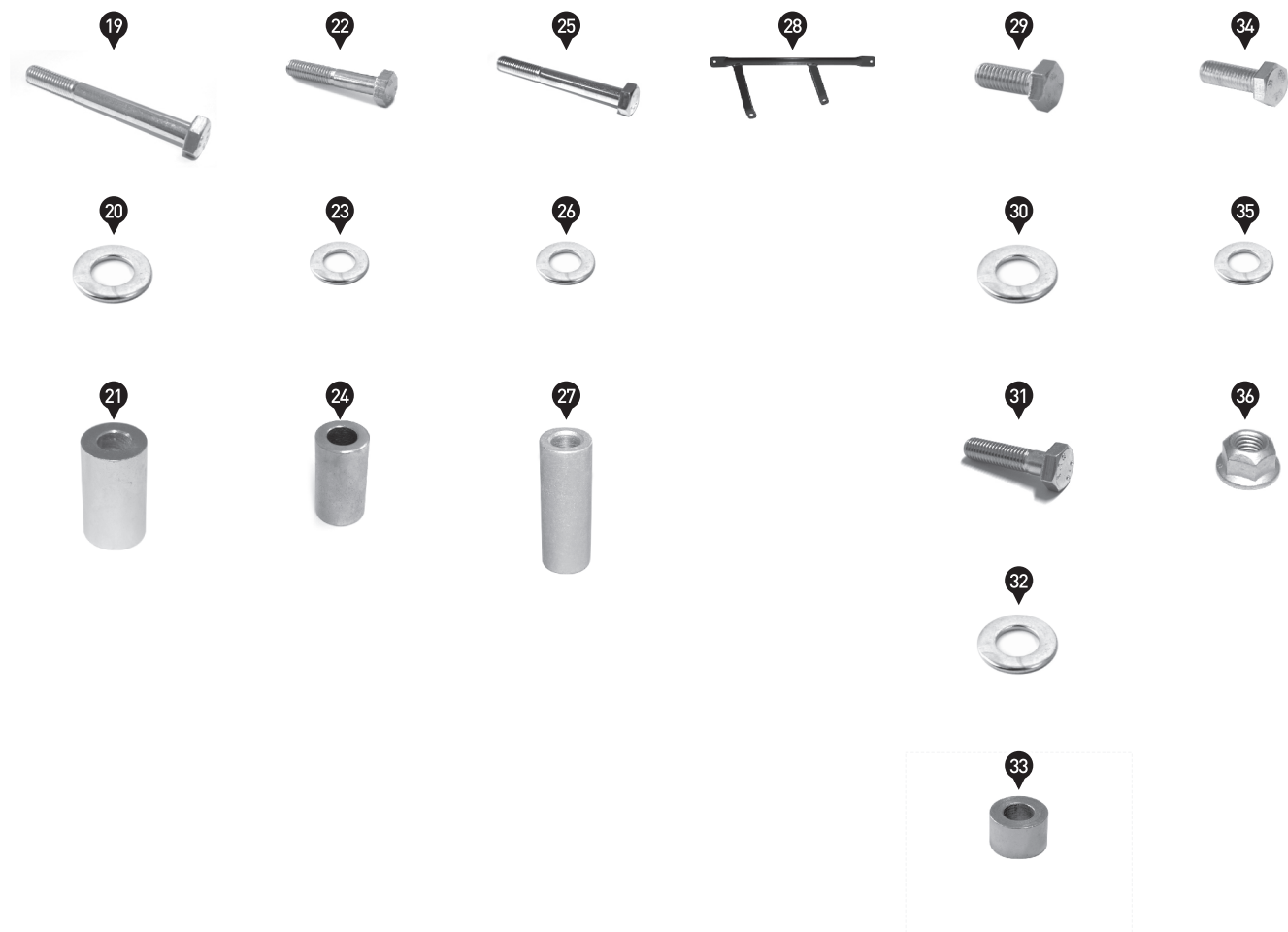
No.	Bezeichnung / Description	Part	Quantity	N-m
(1)	SBL.07.556.901 & 902	Crashbar (left & right side)	2	
	<i>F 800 GS (08 - 12) &amp; F 650 GS (08 -)</i>	<i>Left side of the vehicle</i>		
(2)	M10 x 100; DIN 931	Hexagon Screw	1	46
(3)	d 10,5; DIN 125	Washer	1	
(4)	20 / 10,5 / 50	Spacer	1	
(5)	M8 x 40; DIN 931	Hexagon Screw	1	23
(6)	d 8,4; DIN 125	Washer	1	
(7)	20 / 8,2 / 15	Spacer	1	
(8)	M8 x 25; DIN 933	Hexagon Screw	1	23
(9)	d 8,4; DIN 125	Washer	1	
	<i>F 800 GS (12 -) &amp; F 700 GS (12 -)</i>	<i>Left side of the vehicle</i>		
(10)	M10 x 110; DIN 931	Hexagon Screw	1	46
(11)	d 10,5; DIN 125	Washer (Pos. 3)	(1)	
(12)	20 / 10,5 / 58	Spacer	1	
(13)	M8 x 50; DIN 931	Hexagon Screw	1	23
(14)	d 8,4; DIN 125	Washer (Pos. 6)	(1)	
(15)	20 / 8,4 / 23	Spacer	1	
(16)	M8 x 35; DIN 931	Hexagon Screw	1	23
(17)	d 8,4; DIN 125	Washer (Pos. 9)	(1)	
(18)	20 / 8,4 / 8	Spacer	1	

All measurements in millimeters



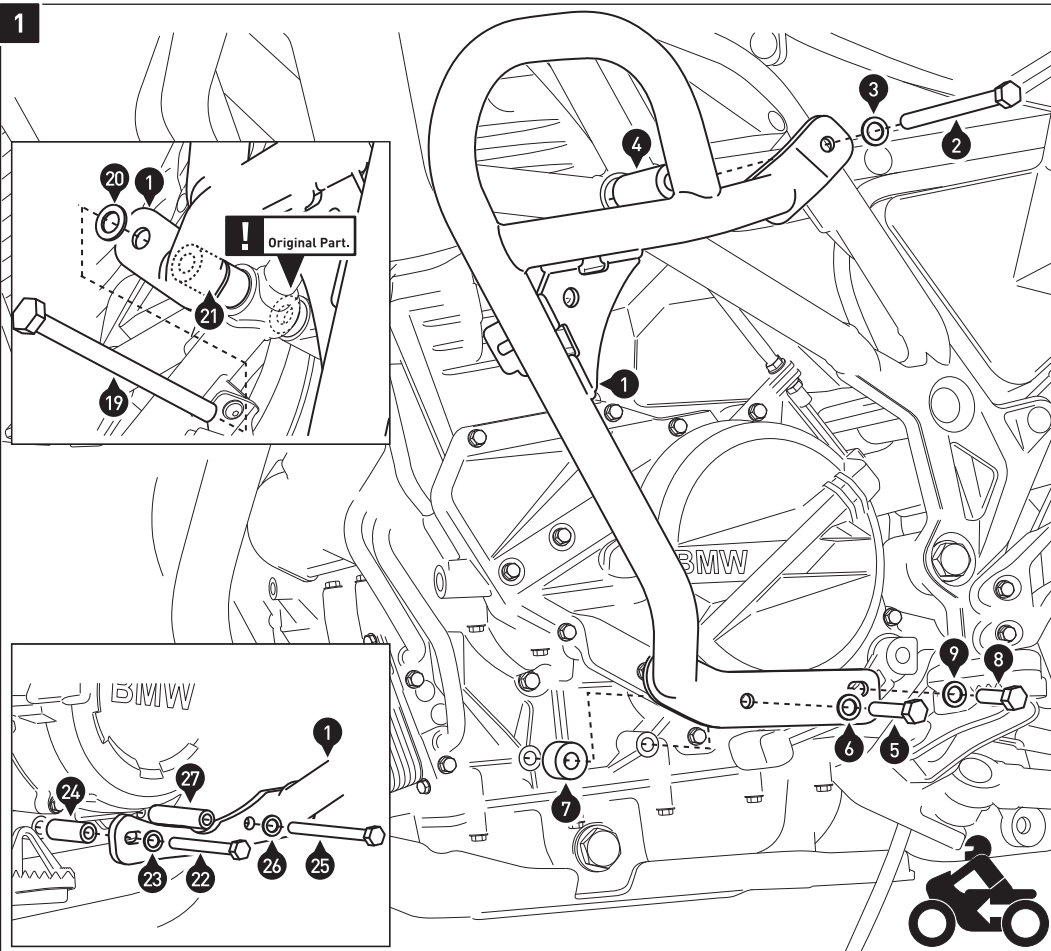
## Parts List

No.	Bezeichnung / Description	Part	Quantity	N-m
		<i>Right side of the vehicle</i>		
[19]	M10 x 110; DIN 931	Hexagon Screw	1	46
[20]	d 10,5; DIN 125	Washer	1	
[21]	20 / 10,5 / 35	Spacer	1	
[22]	M8 x 50; DIN 931	Hexagon Screw	1	23
[23]	d 8,4; DIN 125	Washer	1	
[24]	15 / 8,4 / 28	Spacer	1	
[25]	M8 x 70; DIN 931	Hexagon Screw	1	23
[26]	d 8,4; DIN 125	Washer	1	
[27]	15 / 8,4 / 45	Spacer	1	
[28]	SBL.07.556.920	Crossbar	1	
[29]	M10 x 20; DIN 933	Hexagon Screw	1	46
[30]	d 10,5; DIN 125	Washer	1	
[31]	M10 x 40; DIN 931	Hexagon Screw	1	46
[32]	d 10,5; DIN 125	Washer	1	
[33]	20 / 10,5 / 14	Spacer	1	
[34]	M8 x 25; DIN 933	Hexagon Screw	2	23
[35]	d 8,4; DIN 125	Washer	2	
[36]	M8; DIN 6927	Lock Nut with Flange	2	



## Mounting

1



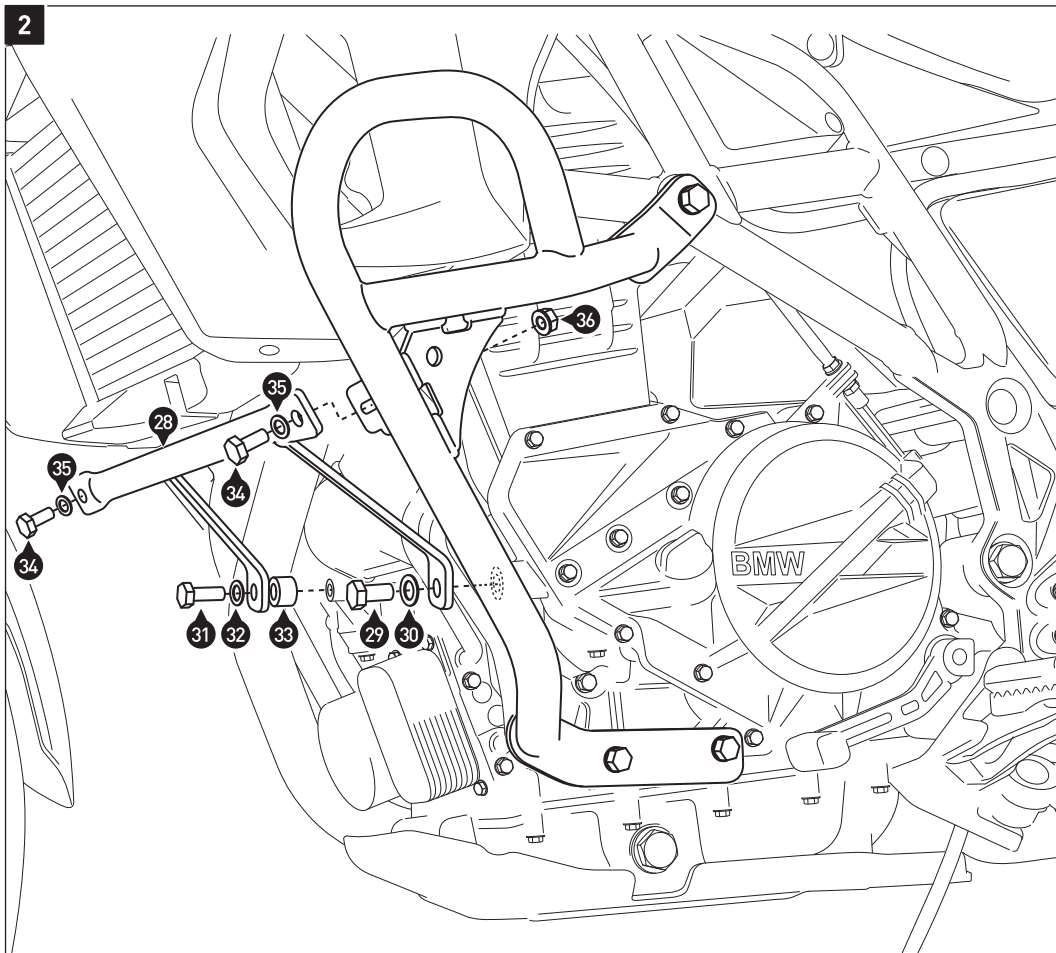
**ATTENTION:** Attach the crashbar (1) on the left side of the vehicle (as shown in the drawing), THEN on the right side of the vehicle (as shown in the detail drawings). Removing both upper engine bolts at the same time can damage the vehicle!

Remove the original screws from the left mounting points. Attach the left crashbar (1), as shown in the drawing.

**ATTENTION:** Use liquid thread locker!

Do not tighten the screws fully. Attach the crashbar (1) on the right side, as shown in the detail drawings.

2

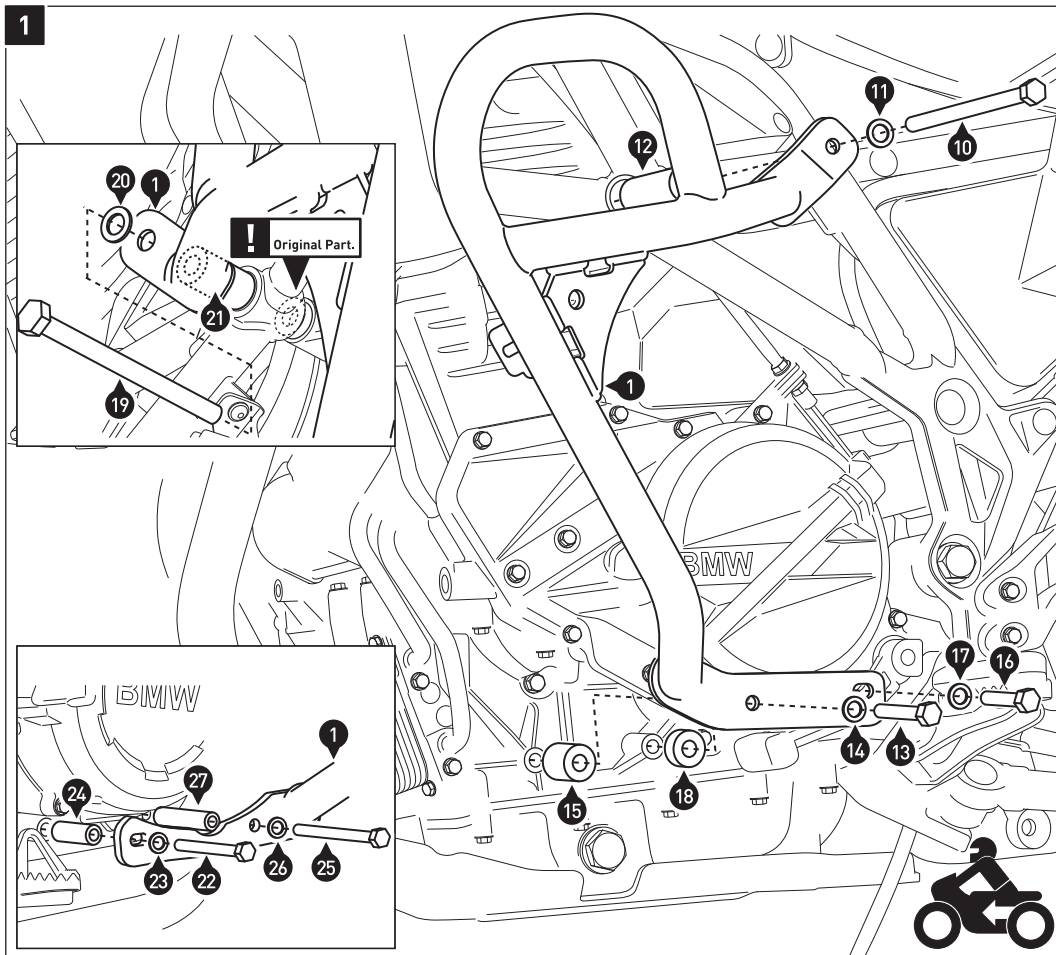


**ATTENTION:** Use liquid thread locker!

Connect the crashbars (1) with the crossbar (28), as shown in the drawing.

After the all parts are aligned without tension, fully tighten all screws as specified in the parts list.

# Mounting

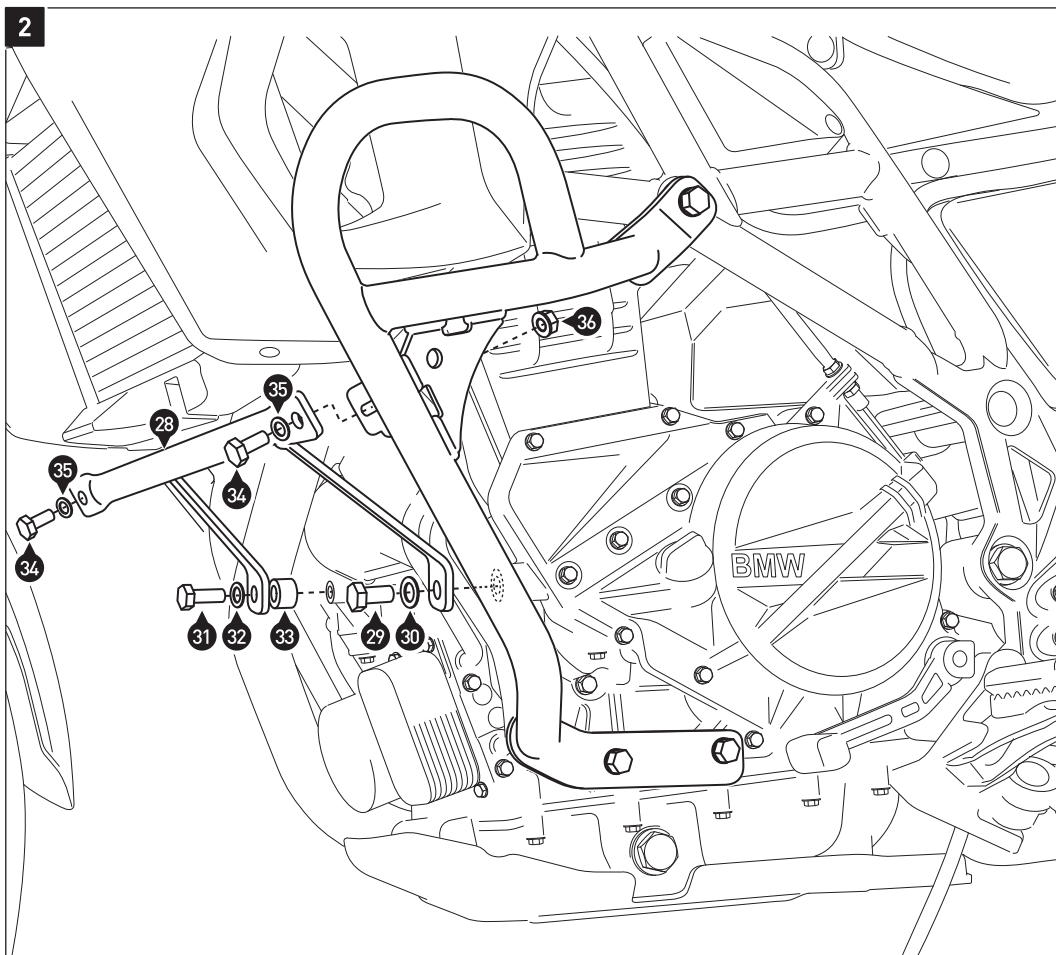


**ATTENTION:** Attach the crashbar (1) on the left side of the vehicle (as shown in the drawing), THEN on the right side of the vehicle (as shown in the detail drawings). Removing both upper engine bolts at the same time can damage the vehicle!

Remove the original screws from the left mounting points. Attach the left crashbar (1), as shown in the drawing.

**ATTENTION:** Use liquid thread locker!

Do not tighten the screws fully. Attach the crashbar (1) on the right side, as shown in the detail drawings.



**ATTENTION:** Use liquid thread locker!

Connect the crashbars (1) with the crossbar (28), as shown in the drawing.

After the all parts are aligned without tension, fully tighten all screws as specified in the parts list.