



1979
40
2019

YEARS ON THE ROAD

40 anni ai piedi dei motociclisti. Migliaia di chilometri percorsi fra prestigiose stelle internazionali del motociclismo, riders appassionati, esaltanti vittorie, coraggiosi cambi di rotta, acute intuizioni e instancabile voglia di fare. Una corsa da togliere il fiato, una visione chiara ed una motivazione tenace. Una traiettoria precisa e rigorosa tra qualità, design e ricerca. 40 anni sulla strada, in continuo movimento e proiettati in avanti per riuscire ad essere sempre interpreti dei trend e del nostro tempo.

40 years on the feet of motorcycle riders. Thousands of kilometres covered that take in revered international stars of motorcycling, devoted bikers, triumphant victories, courageous changes of direction, acute insight and an unrelenting desire to achieve goals. A race that leaves you breathless, a clear vision and implacable motivation. A rigorous and precise trajectory made up of quality, design and research. 40 years on the road, continuously on the move and urged on by the desire to always be interpreters of the fashion trends and of our times.

Giorgio De Angelis, photo VD Photo





#NOFILTER

Giulia Azzioli, photo Nazareno Gangemi

20
COLLECTION

INTERFERENCE
IN THE SYSTEM.
A LIBERATING
#NOFILTER THAT
REMOVES BRAKES,
IMPOSITIONS AND
CLASSIFICATIONS.
ERROR AND
IMPERFECTION AS
TRUE BEAUTY.
STYLMARTIN
OPENS ITSELF TO
THE WORLD, TO
CONTAMINATIONS,
DIVERSITY AND
IMPERFECTION.



Giorgio De Angelis, photo VD Photo

SPORT



Giulia Arzuffi, photo Gerardo Gangemi

SNEAKERS



Photo Alessandra Balonello, Marco Pignolo



URBAN



Marius Brelauskas, photo Imantas Borko

TOURING



Photo Cristiano Morello

RACING



David Stripe

MINIMOTO



Photo Jonas Z.

OFF ROAD



STYLES MIX TOGETHER,
THE CATEGORIES BECOME
BLURRED, RULES AND
STEREOTYPES ARE BROKEN
DOWN, IN THE SPIRIT OF THE
MOST TOTAL FREEDOM OF
EXPRESSION.

Sport, streetwear, fashion, custom, urban,
and touring become territories to be
explored and mixed for the purpose of
asserting individual uniqueness.

Dario Azzolini, photo Matteo Gannizzaro

QUALITY

Stylmartin has always made quality the fulcrum of its philosophy. The company works to guarantee customers long-lasting and comfortable footwear, with brand-characteristic perfect fitting. **Excellence is a priority and determines every decision, with the utmost attention paid to every detail of the design and production process. Stylmartin's path of quality runs smoothly from design concept through to certification.**

The combination of meticulous **Italian design**, detailed study of foot ergonomics and exactly how the shoe will be worn and used, and careful research and choice of raw materials ensures an artisanal Made in Europe product that conforms to a scrupulous certification process. All this makes every single Stylmartin shoe high-quality, safe, comfortable, and durable.

ITALIAN DESIGN

Stylmartin footwear represents the value of Italian Design at its best, not just because it's entirely designed in Italy, but because it too - like Made in Italy design - embodies a perfect combination of shape and function, an efficient and harmonious symbiosis between aesthetics and functionality.

On the one hand, aesthetic research, a sophisticated enterprise of fusion and experimentation in terms of materials, pattern and texture to meet the cutting-edge trends. On the other hand, the study of footwear ergonomics, the anatomy of the feet and how they behave when in movement to identify the best-performing solutions.

Through very painstaking R&D endeavours, Stylmartin is able to integrate both aesthetic and functional needs perfectly into each item of footwear. In doing so, each Stylmartin shoe expresses Italian Design and its value in the world.





IDEAL CONSTRUCTION

The assembly of the shoe is a key moment in defining Stylmartin's quality. Stylmartin assembles its shoes entirely in Europe, guaranteeing excellence not only in terms of design, but also in terms of construction. The company's use of "ideal construction", **an artisan technique of fixing the upper to the sole, is of particular importance.** The upper side of the shoe is prepared with the edges turned outside and is glued and pressed onto a midsole, which is then sewed by a machine called a "rapid". The thread (first in cotton and then in nylon or synthetic) is treated inside a special boiler with melted pitch, to guarantee the full waterproofing of thread and holes. **This technique allows an extremely easy resoling of every type of shoe, exceptional flexibility and torsion capacity, and guarantees the making of a high-quality shoe.**

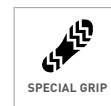


CERTIFICATIONS



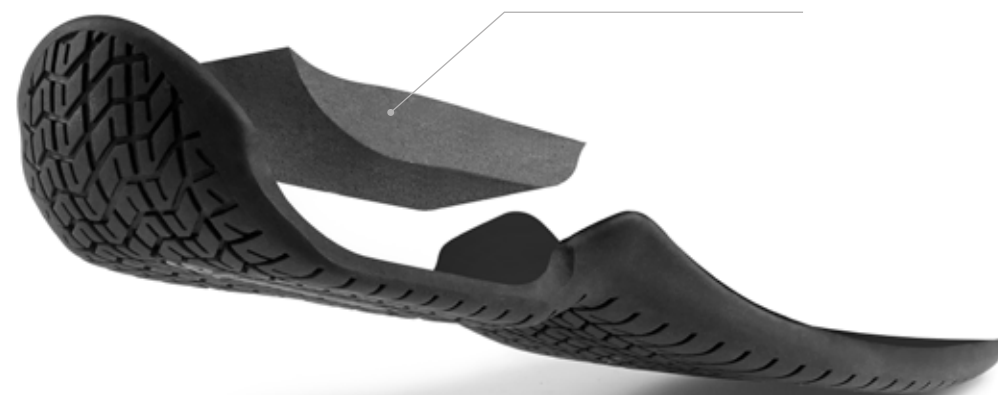
Stylmartin dedicates careful attention to the certification process, which ratifies the excellence of their shoes and their homologation to EU regulations regarding safety devices. This certification is only issued by accredited institutions after a company has passed strict tests that ensure the absolute suitability of their product in terms of a high standard of protection. Stylmartin works every day to make safe and comfortable footwear and is fully committed to the fulfillment of the new personal protective equipment (PPE) EU 2016/425 regulation certification. However, due the current phase of progressive adaptation to the new legislative framework policy, shoes awaiting EU approval - although perfectly safe and protective - cannot yet be legally equalized to certified PPE.

Giorgio De Angelis, photo VD Photo

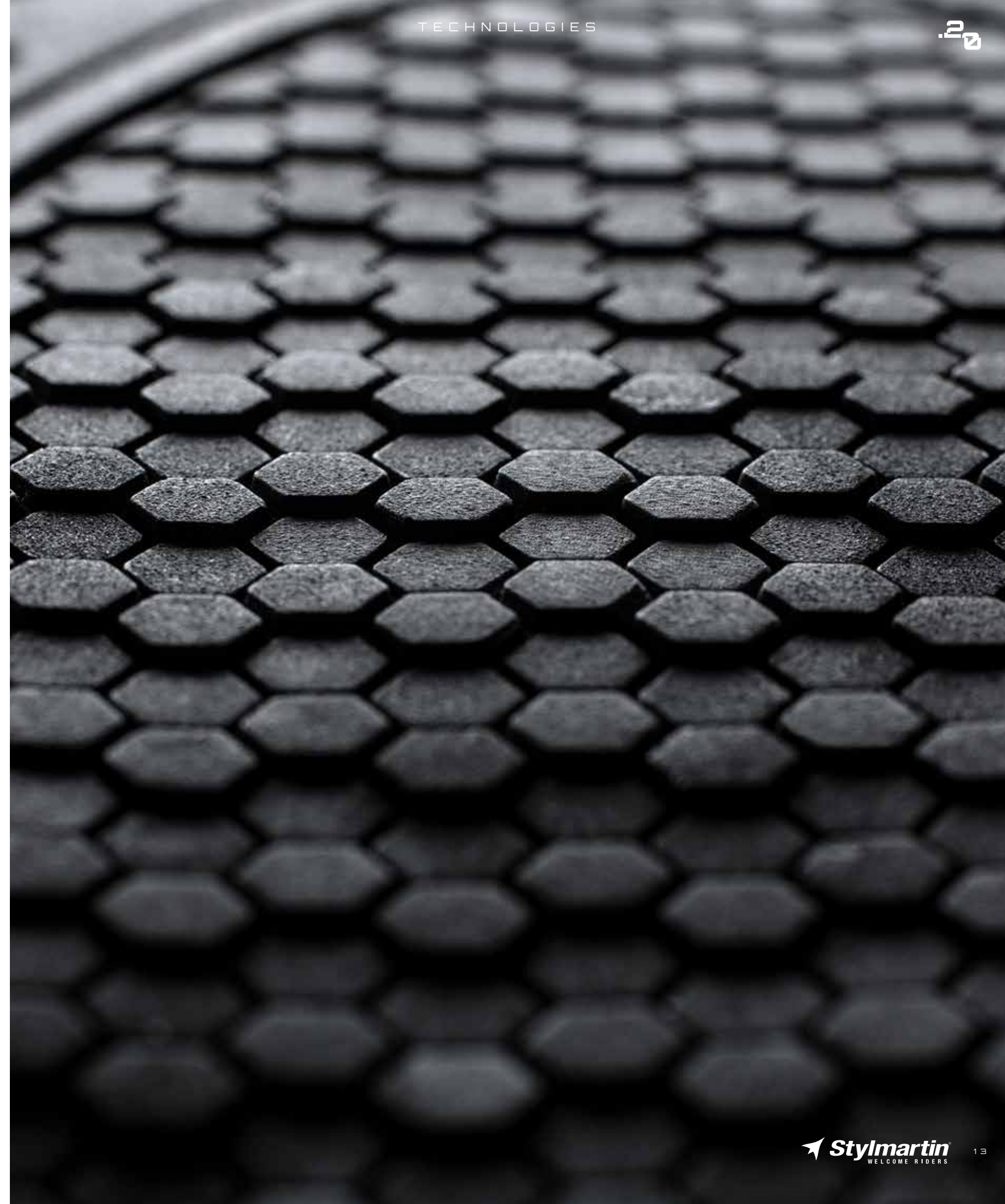


MORE TECH, MORE SPORT

EVA SHOCK
ABSORBER INSERT



The latest innovation among the Stylmartin technological strongpoints is the sole of the Velox and Vector models from the new Sport U line. A sole with an active and high-performance soul, designed with the aim of ensuring exceptional grip under any conditions. Made using a special rubber with enhanced non-slip properties, it ensures grip on any kind of terrain. The sole also incorporates an advanced shock absorber insert in EVA, to provide points of contact with greater stability, along with considerable support and a cushioning effect that reduces impact peaks and above all improves foot roll.





LEATHER

WITHOUT EXCEPTION,
STYLMARTIN
USES PRECIOUS
LEATHERS THAT ARE
RECOGNIZABLE BY
THEIR DISTINCTIVE
NUANCES AND
IMPERFECTIONS.

Slight variations in colour caused by the passage of time, wear or sensitivity to scratches, give the leather its genuineness and beauty, making each product unique and original. Irregularities in the grain pattern, such as uneven shades of colour and surface marks, cannot be considered defects but rather fine qualities, which are actually a fundamental feature of high-quality leather.



PULL UP LEATHER

This leather is treated with a combination of aniline wax, which gives it a characteristic appearance, and the skin will lighten over time, continuing to live with the wearer.

GRAFFITI LEATHER

Another full-grain leather, here the skin is scratched on the surface in two directions, in such a way as to remove the superficial color and allow the lighter background to emerge. The uneven scratches create peculiar shades and nuances of brown that are always different and intense.

NUBUCK

The making of this precious leather requires a long and careful brushing and sanding process. This procedure enhances the “writing” characteristics of full-grain leather, making the surface extremely soft to the touch and lending it a velvet-like appearance.

NATURAL LEATHER

greased skin treated with a refined finish. The cutting phase of this leather involves extreme manual skill and accuracy to preserve its nuances in every pair of shoes. This artisan process requires high professionalism and hand-made long experience.

Photo Rkhroob



BEAUTIFUL
IMPERFECTIONS

WRITER LEATHER

A feather in Stylmartin’s hat, this full-grain leather of the highest quality has been treated to give it an antique appearance. A glossy resin is applied and then removed by hand, allowing the lighter background color of the leather to surface. This process lends to the leather a sophisticated “writing” effect, which marks and tells the story of the motorcyclist.



SNEAKERS



Photo Alessandra Balzanello, Marco Priardello

IRON WP
BLACK
SIZES: 36 - 47 EU

UPPER:
full grain water-repellent
graffiti leather
LINING:
waterproof and breathable
PROTECTIONS:
malleolus PU internal
protection on both sides +
leather gear protection
FASTENING:
laces (two versions)
FOOTBED:
anatomic, changeable,
breathable and microforated
SOLE:
two-coloured antislip
rubber sole

Handcrafted stitching



2 changeable laces

- CE CERTIFIED
EN 13634:2017
- QUALITY
LEATHER
- WATERPROOF
- BREATHABLE
- SPECIAL
GRIP
- WOMAN SIZING
AVAILABLE

SMOKE WP
GREY
SIZES: 36 - 47 EU

UPPER:
nubuck water-repellent
leather
LINING:
waterproof and breathable
PROTECTIONS:
malleolus PU internal
protection on both sides +
leather gear protection
FASTENING:
laces (two versions)
FOOTBED:
anatomic, changeable and
breathable microforated
SOLE:
two-coloured antislip
rubber sole

Padded leather collar for better
comfort.



- CE CERTIFIED
EN 13634:2017
- QUALITY
LEATHER
- WATERPROOF
- BREATHABLE
- SPECIAL
GRIP
- WOMAN SIZING
AVAILABLE



2 changeable laces

MARSHALL WP
SIZES: 36 - 47 EU

UPPER:
full grain pull up water-
repellent leather
LINING:
waterproof and breathable
PROTECTIONS:
malleolus PU internal
protection on both sides +
leather gear protection
FASTENING:
laces
INSERT:
rear silver reflex
FOOTBED:
anatomic, changeable,
breathable and microforated
SOLE:
two-coloured antislip
rubber sole



- CE CERTIFIED
EN 13634:2015
- QUALITY
LEATHER
- WATERPROOF
- BREATHABLE
- SPECIAL
GRIP
- WOMAN SIZING
AVAILABLE



CHESTER WP

BLACK
SIZES: 36 - 47 EU

- UPPER:**
full grain water-repellent leather
- LINING:**
waterproof and breathable
- PROTECTIONS:**
malleolus PU internal protection on both sides + leather gear protection
- FASTENING:**
laces
- INSERT:**
rear silver reflex
- FOOTBED:**
anatomic, changeable, breathable and microforated
- SOLE:**
two-coloured antislip rubber sole



- CE CERTIFIED EN 13634:2015
- QUALITY LEATHER
- WATERPROOF
- BREATHABLE
- SPECIAL GRIP
- WOMAN SIZING AVAILABLE

KANSAS WP

ANTHRACITE
SIZES: 36 - 47 EU

- UPPER:**
melange water-repellent fabric + greasy water-repellent leather inserts
- LINING:**
waterproof and breathable
- PROTECTIONS:**
malleolus PU internal protection on both sides + leather gear protection
- FASTENING:**
laces (two versions)
- INSERT:**
rear fluo reflex
- FOOTBED:**
anatomic, changeable, breathable and microforated
- SOLE:**
two-coloured antislip rubber sole



2 changeable laces

- CE CERTIFIED EN 13634:2017
- WATERPROOF
- BREATHABLE
- SPECIAL GRIP
- WOMAN SIZING AVAILABLE

SEATTLE EVO WP

BLACK
SIZES: 36 - 47 EU

- UPPER:**
greasy water-repellent leather
- LINING:**
waterproof and breathable
- PROTECTIONS:**
malleolus PU internal protection on both sides + VWR rubber gear protection
- FASTENING:**
laces (2 versions)
- INSERT:**
rear fluo reflex
- FOOTBED:**
anatomic, changeable, breathable and microforated
- SOLE:**
two-coloured antislip rubber sole



2 changeable laces

- CE CERTIFIED EN 13634:2015
- QUALITY LEATHER
- WATERPROOF
- BREATHABLE
- SPECIAL GRIP
- WOMAN SIZING AVAILABLE

RAPTOR EVO WP

CAMOUFLAGE
SIZES: 36 - 47 EU

- UPPER:**
camouflage water-repellent fabric + greasy water-repellent leather inserts
- LINING:**
waterproof and breathable
- PROTECTIONS:**
malleolus PU internal protection on both sides + leather gear protection
- FASTENING:**
laces (two versions)
- INSERT:**
rear fluo reflex
- FOOTBED:**
anatomic, changeable, breathable and microforated
- SOLE:**
two-coloured antislip rubber sole



2 changeable laces

- CE CERTIFIED EN 13634:2017
- WATERPROOF
- BREATHABLE
- SPECIAL GRIP
- WOMAN SIZING AVAILABLE



CORE WP

BLACK
SIZES: 36 - 47 EU

- UPPER:
full grain leather
- LINING:
waterproof and breathable
+ air mesh
- PROTECTIONS:
malleolus PU internal
protection on both sides
- FASTENING:
laces
- FOOTBED:
anatomic, changeable,
breathable and microforated
- SOLE:
rubber one color black

CORE WP

BLACK / WHITE
SIZES: 36 - 47 EU

- UPPER:
full grain leather
- LINING:
waterproof and breathable
+ air mesh
- PROTECTIONS:
malleolus PU internal
protection on both sides
- FASTENING:
laces (2 variants)
- FOOTBED:
anatomic, changeable,
breathable and microforated
- SOLE:
rubber one color white



- CE CERTIFIED
EN 13634:2017
- QUALITY
LEATHER
- WATERPROOF
- BREATHABLE
- SPECIAL
GRIP
- WOMAN SIZING
AVAILABLE

- CE CERTIFIED
EN 13634:2017
- QUALITY
LEATHER
- WATERPROOF
- BREATHABLE
- SPECIAL
GRIP
- WOMAN SIZING
AVAILABLE

2 changeable laces

CORE WP

BROWN
SIZES: 36 - 47 EU

UPPER:

full grain leather

LINING:

waterproof and breathable
+ air mesh

PROTECTIONS:

malleolus PU internal
protection on both sides

FASTENING:

laces (2 variants)

FOOTBED:

anatomic, changeable,
breathable and microforated

SOLE:

rubber one color white



CE CERTIFIED
EN 13634:2017



QUALITY
LEATHER



WATERPROOF



BREATHABLE



SPECIAL
GRIP



WOMAN SIZING
AVAILABLE



2 changeable laces

ATOM

BLACK
SIZES: 36 - 47 EU

UPPER:

water-repellent and
breathable mesh fabric
+ water-repellent greasy
leather inserts + microfiber

LINING:

breathable air mesh

SUPPORTS:

malleolus PU internal +
leather shift pad

FASTENING:

laces (2 versions)

FOOTBED:

anatomic, changeable,
breathable and microforated

SOLE:

two-coloured antislip
rubber sole

Handcrafted stitching



SECTOR

WHITE
SIZES: 36 - 47 EU

UPPER:

perforated microfiber +
waxed leather inserts

LINING:

breathable mesh

PROTECTIONS:

malleolus PU internal
protection on both sides +
microfiber gear protection

FASTENING:

laces (2 version)

INSERT:

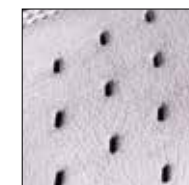
rear fluo reflex

FOOTBED:

anatomic, changeable,
breathable and microforated

SOLE:

two-coloured antislip
rubber sole



2 changeable laces



CE CERTIFIED
EN 13634:2017



QUALITY
LEATHER



WATERPROOF



BREATHABLE



SPECIAL
GRIP



WOMAN SIZING
AVAILABLE



CE CERTIFIED
EN 13634:2017



QUALITY
LEATHER



WATERPROOF



BREATHABLE



SPECIAL
GRIP



WOMAN SIZING
AVAILABLE

G R I D

BLUE
SIZES: 36 - 47 EU

UPPER:

water-repellent waxed
fabric + nappa hydro leather
inserts

LINING:

breathable air mesh

PROTECTIONS:

malleolus PU internal
protection on both sides

FASTENING:

laces (2 versions)

FOOTBED:

anatomic, changeable,
breathable and microforated

SOLE:

rubber one color white



2 changeable laces



Photo Marco Priarollo

COLORADO
COGNAC
SIZES: 36 - 47 EU

UPPER:
water repellent leather +
water repellent suede
LINING:
breathable hypoallergenic
and rapid absorption/
desorption microfiber
PROTECTIONS:
malleolus PU internal
protection on both sides +
leather gear protection
FASTENING:
laces
INSERT:
rear reflex silver
FOOTBED:
anatomic, changeable,
breathable and microforated
SOLE:
antislip rubber sole



- CE CERTIFIED
EN 13634:2017
- QUALITY
LEATHER
- BREATHABLE
- SPECIAL
GRIP
- WOMAN SIZING
AVAILABLE

ARIZONA
LODEN
SIZES: 36 - 47 EU

UPPER:
breathable fabric + waxed
leather inserts
LINING:
breathable air mesh
PROTECTIONS:
malleolus PU internal
protection on both sides +
leather gear protection
FASTENING:
laces (two versions)
INSERT:
rear silver reflex
FOOTBED:
anatomic, changeable,
breathable and microforated
SOLE:
two-coloured antislip
rubber sole



- CE CERTIFIED
EN 13634:2017
- BREATHABLE
- SPECIAL
GRIP
- WOMAN SIZING
AVAILABLE



2 changeable laces

SUNSET EVO
GREY
SIZES: 36 - 47 EU

UPPER:
breathable fabric + leather
inserts
LINING:
breathable air mesh
PROTECTIONS:
malleolus PU internal
protection on both sides +
leather gear protection
FASTENING:
laces (two versions)
INSERT:
rear fluo reflex
FOOTBED:
anatomic, changeable,
breathable and microforated
SOLE:
two-coloured antislip
rubber sole



- CE CERTIFIED
EN 13634:2017
- BREATHABLE
- SPECIAL
GRIP
- WOMAN SIZING
AVAILABLE



2 changeable laces



Photo RKhooob



Photo Alessandra Bozonello, Marco Priorello

S P O R T U



VELOX WP

BLACK
SIZES: 39 - 47 EU

UPPER:

leather (suede) + fabric

LINING:

waterproof and breathable + air mesh

PROTECTIONS:

malleolus PU internal protection on both sides
+ leather gear protection + external microinjection inserts

FASTENING:

laces + hook and loop fastener

FOOTBED:

anatomic, changeable, breathable and microforated

SOLE:

anti-slip rubber sole + "eva" shock absorber insert



CE CERTIFIED
EN 13634:2017



QUALITY
LEATHER



WATERPROOF



BREATHABLE



SPECIAL
GRIP



VECTOR WP

BLACK - RED
SIZES: 39 - 47 EU

UPPER:

microfiber + microfiber

rubber

LINING:

waterproof and breathable
+ air mesh

PROTECTIONS:

malleolus PU internal protection on both sides
+ external microinjection inserts

FASTENING:

laces + hook and loop fastener

FOOTBED:

anatomic, changeable, breathable and microforated

SOLE:

anti-slip rubber sole + "eva" shock absorber insert



CE CERTIFIED
EN 13634:2017



WATERPROOF



BREATHABLE



SPECIAL
GRIP



VECTOR WP

PURPLE
SIZES: 36 - 42 EU

- UPPER:
microfiber + microfiber
rubber
- LINING:
waterproof and breathable
+ air mesh
- PROTECTIONS:
malleolus PU internal
protection on both sides
+ external microinjection
inserts
- FASTENING:
laces + hook and loop fastener
- FOOTBED:
anatomic, changeable,
breathable and microforated
- SOLE:
anti-slip rubber sole + "eva"
shock absorber insert



- CE CERTIFIED
EN 13634:2017
- WATERPROOF
- BREATHABLE
- SPECIAL
GRIP
- WOMAN FIT

VECTOR WP

BLACK - ANTHRACITE
SIZES: 36 - 47 EU

- UPPER:
microfiber + microfiber
rubber
- LINING:
waterproof and breathable
+ air mesh
- PROTECTIONS:
malleolus PU internal
protection on both sides
+ external microinjection
inserts
- FASTENING:
laces + hook and loop fastener
- FOOTBED:
anatomic, changeable,
breathable and microforated
- SOLE:
anti-slip rubber sole + "eva"
shock absorber insert



- CE CERTIFIED
EN 13634:2017
- WATERPROOF
- BREATHABLE
- SPECIAL
GRIP
- WOMAN SIZING
AVAILABLE

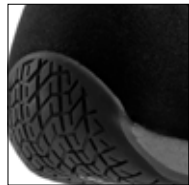


Photo Marco Priarollo

VECTOR AIR

BLACK - ANTHRACITE
SIZES: 36 - 47 EU

UPPER:

microfiber + microfiber
rubber

LINING:

breathable air mesh

PROTECTIONS:

malleolus PU internal
protection on both sides
+ external microinjection
inserts

FASTENING:

laces + hook and loop fastener

FOOTBED:

anatomic, changeable,
breathable and microforated

SOLE:

anti-slip rubber sole + "eva"
shock absorber insert



CE CERTIFIED
EN 13634:2017



BREATHABLE



SPECIAL
GRIP



WOMAN SIZING
AVAILABLE



AIR INTAKE



AUDAX WP

BLACK
SIZES: 39 - 47 EU

UPPER:
leather (suede) + fabric
LINING:
waterproof and breathable
+ air mesh
PROTECTIONS:
malleolus PU internal
protection on both sides
FASTENING:
laces (two versions) +
hook and loop fastener
FOOTBED:
anatomic, changeable,
breathable and microforated
SOLE:
rubber two color



2 changeable laces



AUDAX WP

BLACK - RED
SIZES: 39 - 47 EU

UPPER:
leather (suede) + fabric
LINING:
waterproof and breathable
+ air mesh
PROTECTIONS:
malleolus PU internal
protection on both sides
FASTENING:
laces (two versions) + hook
and loop fastener
FOOTBED:
anatomic, changeable,
breathable and microforated
SOLE:
rubber two color



2 changeable laces

AUDAX WP

BLACK - MILITARY GREEN
SIZES: 39 - 47 EU

UPPER:
leather (suede) + fabric
LINING:
waterproof and breathable
+ air mesh
PROTECTIONS:
malleolus PU internal
protection on both sides
FASTENING:
laces (two versions) + hook
and loop fastener
FOOTBED:
anatomic, changeable,
breathable and microforated
SOLE:
rubber two color



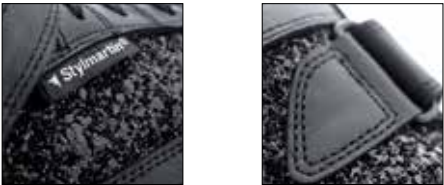
2 changeable laces



AUDAX GLAM WP

BLACK
SIZES: 36 - 42 EU

UPPER:
leather + glitter textile
LINING:
waterproof and breathable
+ air mesh
PROTECTIONS:
malleolus PU internal
protection on both sides
FASTENING:
laces
FOOTBED:
anatomic, changeable,
breathable and microforated
SOLE:
rubber two color



AUDAX JUNGLE WP

BLACK
SIZES: 36 - 42 EU

UPPER:
leather + printed suede
LINING:
waterproof and breathable
+ air mesh
PROTECTIONS:
malleolus PU internal
protection on both sides
FASTENING:
laces
FOOTBED:
anatomic, changeable,
breathable and microforated
SOLE:
rubber two color



- CE CERTIFIED
EN 13634:2017
- QUALITY
LEATHER
- WATERPROOF
- BREATHABLE
- SPECIAL
GRIP
- WOMAN FIT

- CE CERTIFIED
EN 13634:2017
- QUALITY
LEATHER
- WATERPROOF
- BREATHABLE
- SPECIAL
GRIP
- WOMAN FIT

U R B A N



Photo R. Klobb



Photo R. Klobb

RED REBEL

BLACK
SIZES: 39 - 47 EU

UPPER:

full grain leather

UPPER COLLAR:

nubuck leather

LINING:

leather

SUPPORTS:

malleolus PU internal +
removable red leather shift
pad

FASTENING:

laces + leather strap with
metal hook

SPECIFICS:

leather cover with holder
pocket for laces

FOOTBED:

anatomic and changeable

SOLE:

Vibram® anti-slip, rubber
stone



Speed lacing
hooks

Removable leather
shift pad included



IDEAL
CONSTRUCTION



QUALITY
LEATHER



BREATHABLE



SPECIAL
GRIP



VIBRAM SOLE

YU'ROK WP

BLACK
SIZES: 36 - 47 EU

UPPER:

full grain greasy leather

LINING:

waterproof and breathable

PROTECTIONS:

malleolus PU internal
protection on both sides +
leather gear protection

FASTENING:

laces (2 versions)

FOOTBED:

changeable and anatomic

SOLE:

Vibram® anti-slip rubber
stone



YU'ROK WP

BROWN
SIZES: 36 - 47 EU

UPPER:

full grain writer leather

LINING:

waterproof and breathable

PROTECTIONS:

malleolus PU internal
protection on both sides +
leather gear protection

FASTENING:

laces (2 versions)

FOOTBED:

changeable and anatomic

SOLE:

Vibram® anti-slip rubber
stone

Vintage leather that effect
increases over time



2 changeable laces



CE CERTIFIED
EN 13634:2017



IDEAL
CONSTRUCTION



QUALITY
LEATHER



WATERPROOF



BREATHABLE



SPECIAL
GRIP



WOMAN SIZING
AVAILABLE



VIBRAM SOLE



CE CERTIFIED
EN 13634:2017



IDEAL
CONSTRUCTION



QUALITY
LEATHER



WATERPROOF



BREATHABLE



SPECIAL
GRIP



WOMAN SIZING
AVAILABLE



VIBRAM SOLE

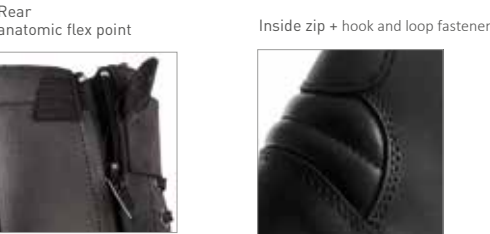


2 changeable laces

ROCKET WP

BLACK
SIZES: 39 - 47 EU

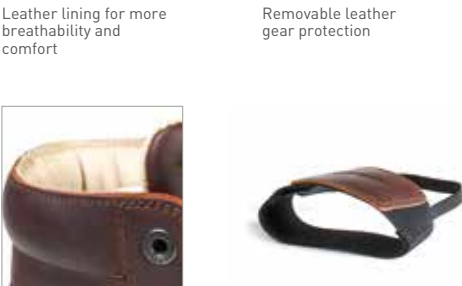
UPPER:
full grain greasy leather
LINING:
waterproof and breathable
PROTECTIONS:
malleolus PU internal
protection on both sides +
leather gear protection
FASTENING:
zip + adjustable leg strap
and laces
FOOTBED:
anatomic, antibacterial and
changeable
SOLE:
anti-slip, antistatic and oil
resistant rubber sole



ACE

TAN BROWN
SIZES: 39 - 47 EU

UPPER:
natural full grain leather
LINING:
leather
PROTECTIONS:
malleolus PU internal
protection on both sides
+ removable leather gear
protection
FASTENING:
zip + laces
FOOTBED:
anatomic, changeable and
antibacterial
SOLE:
anti-slip, antistatic and oil
resistant rubber sole



ROCKET WP

BROWN
SIZES: 39 - 47 EU

UPPER:
full grain writer leather
LINING:
waterproof and breathable
PROTECTIONS:
malleolus PU internal
protection on both sides +
leather gear protection
FASTENING:
zip + adjustable leg strap
and laces
FOOTBED:
anatomic, antibacterial and
changeable
SOLE:
anti-slip, antistatic and oil
resistant rubber sole



OXFORD WP

BLACK
SIZES: 39 - 46 EU

UPPER:
full grain water-repellent
graffiti leather
LINING:
waterproof and breathable
SUPPORTS:
malleolus PU internal +
removable leather shift pad
FASTENING:
zip on the inner side
FOOTBED:
anatomic, microforated,
breathable and changeable
SOLE:
thunit rubber (similar to
leather), waterproof and
abrasion resistant



WAVE WP

BROWN
SIZES: 39 - 47 EU

UPPER:

full grain writer leather

LINING:

waterproof and breathable

SUPPORTS:

malleolus PU internal

FASTENING:

laces

FOOTBED:

anatomic, antibacterial and changeable

SOLE:

anti-slip, antistatic and oil resistant rubber sole



JACK WP

BLACK
SIZES: 39 - 47 EU

UPPER:

full-grain leather

LINING:

waterproof and breathable

PROTECTIONS:

malleolus PU internal protection on both sides + leather gear protection

FASTENING:

zip + laces

FOOTBED:

anatomic, antibacterial and changeable

SOLE:

anti-slip, antistatic, and oil resistant rubber sole

Rear flex point



Leather gear protection



CRUISE WP

BLACK
SIZES: 39 - 47 EU

UPPER:

full grain water-repellent leather

LINING:

waterproof and breathable

SUPPORTS:

malleolus PU internal + leather shift pad

FASTENING:

zip on the inner side

FOOTBED:

anatomic, antibacterial and changeable

SOLE:

anti-slip, oil proof and hard wearing rubber sole

Ergonomic flexion point



Inner side zip



U R B A N

DISTRICT WP

BROWN
SIZES: 39 - 47 EU

UPPER:
greased leather
LINING:
waterproof and breathable
PROTECTIONS:
malleolus PU internal
protection on both sides +
leather gear protection
FASTENING:
laces
FOOTBED:
anatomic, changeable and
breathable microforated
SOLE:
anti-slip, antistatic and oil
resistant rubber sole



PEARL LEO WP

LEOPARD
SIZES: 36 - 42 EU

UPPER:
leather water repellent +
full grain leather inserts
LINING:
breathable and waterproof
PROTECTIONS:
malleolus PU internal
protection on both sides +
leather gear protection
FASTENING:
zip
FOOTBED:
antibacterial, anatomic, and
changeable
SOLE:
oilproof and antistatic
rubber, heel 4 cm



U R B A N

20



Photo Marco Pirarello



PEARL J. WP

BLACK
SIZES: 36 - 42 EU

UPPER:

water-repellent full-grain leather

leather

LINING:

breathable and waterproof

PROTECTIONS:

malleolus PU internal protection on both sides + leather gear protection

FASTENING:

zip

FOOTBED:

antibacterial, anatomic, and changeable

SOLE:

oilproof and antistatic rubber, heel 4 cm

Back personalised insert with stylmartin hot debossed

Inside zip with hook and loop fastener protection



CE CERTIFIED
EN 13634:2017



QUALITY
LEATHER



WATERPROOF



BREATHABLE



WOMAN FIT

PEARL ROCK WP

BLACK
SIZES: 36 - 42 EU

UPPER:

full grain leather water-repellent with hand-applied studs

LINING:

breathable and waterproof

PROTECTIONS:

malleolus PU internal protection on both sides + leather gear protection

FASTENING:

zip

FOOTBED:

antibacterial, anatomic, and changeable

SOLE:

oilproof and antistatic rubber, heel 4 cm



CE CERTIFIED
EN 13634:2017



QUALITY
LEATHER



WATERPROOF



BREATHABLE



SPECIAL
GRIP



WOMAN FIT





Photo Salvatore Di Benedetto, "Sasaplanet"

TOURING



MATRIX WP
ANTHRACITE
SIZES: 39 - 47 EU

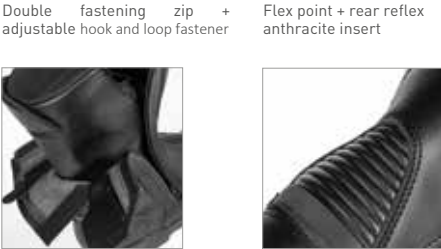
UPPER:
full grain writer leather
LINING:
waterproof and breathable
PROTECTIONS:
malleolus PU internal
protection on both sides
+ tibia + calf bone gear +
leather gear protection
FASTENING:
two self-blocking adjustable
buckles + hook and loop
fastener
FOOTBED:
anatomic and changeable
SOLE:
Vibram® anti-slip, rubber
stone



- CE CERTIFIED
EN 13634:2015
- IDEAL
CONSTRUCTION
- QUALITY
LEATHER
- WATERPROOF
- BREATHABLE
- SPECIAL
GRIP
- VIBRAM SOLE

SYNCRO WP
BLACK
SIZES: 39 - 47 EU

UPPER:
full-grain leather
LINING:
waterproof and breathable
PROTECTIONS:
malleolus PU internal
protection on both sides +
leather gear protection
FASTENING:
zip + hook and loop fastener
FOOTBED:
anatomic, antibacterial and
changeable
SOLE:
anti-slip, antistatic, and oil
resistant rubber sole



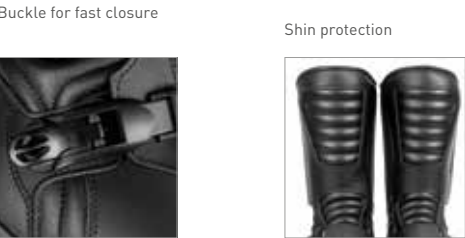
- CE CERTIFIED
EN 13634:2017
- DOUBLE OPENING
- QUALITY
LEATHER
- WATERPROOF
- BREATHABLE
- SPECIAL
GRIP



Photo RKnoob

MILES WP
BLACK
SIZES: 39 - 47 EU

- UPPER:**
water-repellent full-grain leather
- LINING:**
breathable and waterproof
- PROTECTIONS:**
internal rubberized heat protection, malleolus PU internal protection on both sides + calf bone + termoformed PU shin protection + PU gear protection
- FASTENING:**
self-blocking lever+ hook and loop fastener
- INSERT:**
rear, reflex and anthracite
- FOOTBED:**
anatomic and changeable
- SOLE:**
oilproof and antistatic rubber



- CE CERTIFIED
EN 13634:2017
- QUALITY
LEATHER
- WATERPROOF
- BREATHABLE
- SPECIAL
GRIP

NAVIGATOR WP
BLACK
SIZES: 38 - 47 EU

- UPPER:**
full grain leather
- LINING:**
waterproof and breathable
- PROTECTIONS:**
malleolus PU internal protection on both sides, shin + PU gear protection
- FASTENING:**
zip
- ADJUSTMENT:**
hook and loop double fastening, adjustable on both sides
- FOOTBED:**
anatomic and changeable
- SOLE:**
oil proof and antistatic rubber



- CE CERTIFIED
EN 13634:2017
- QUALITY
LEATHER
- WATERPROOF
- BREATHABLE
- SPECIAL
GRIP

DENVER WP
BLACK
SIZES: 38 - 47 EU

- UPPER:**
full grain leather
- LINING:**
waterproof and breathable
- PROTECTIONS:**
malleolus PU internal protection on both sides + micro injected gear protection
- FASTENING:**
zip + hook and loop fastener
- FOOTBED:** changeable and anatomic
- SOLE:**
anti-slip rubber grip



- CE CERTIFIED
EN 13634:2017
- QUALITY
LEATHER
- WATERPROOF
- BREATHABLE
- SPECIAL
GRIP

SHIVER LOW WP

BLACK
SIZES: 38 - 47 EU

- UPPER:
microfiber water-repellent
LINING:
waterproof
PROTECTIONS:
malleolus PU internal
protection on both sides +
microfiber gear protection
FASTENING:
zip + hook and loop fastener
INSERT:
rear, silver and reflex
SOLE:
antistatic and oil resistant
rubber sole

Ergonomic flex point



LEGEND WP

BLACK
SIZES: 39 - 47 EU

- UPPER:
full grain greasy leather
LINING:
waterproof and breathable
SUPPORTS:
malleolus PU internal +
leather shift pad
FASTENING /
ADJUSTMENT:
zip + strap on the instep
and leg
FOOTBED:
anatomic and changeable
SOLE:
anti-slip, oil proof and hard
wearing rubber



YUMA ELEGANCE WP

BLACK
SIZES: 36 - 41 EU

- UPPER:
water-repellent full grain
leather
LINING:
waterproof
FASTENING:
zip + hook and loop fastener
INSERT:
rear, silver and reflex
FOOTBED:
anatomic and changeable
SOLE:
anti-slip and hard-
wearing rubber

Ankle flex point



LEGEND WP

BROWN
SIZES: 39 - 47 EU

- UPPER:
full grain writer leather
LINING:
waterproof and breathable
SUPPORTS:
malleolus PU internal +
leather shift pad
FASTENING /
ADJUSTMENT:
zip + strap on the instep
and leg
FOOTBED:
anatomic and changeable
SOLE:
anti-slip, oil proof and hard
wearing rubber

Vintage leather that effect
increases over time



CONTINENTAL

BLACK
SIZES: 38 - 47 EU

UPPER:

calfskin nappa leather
water-repellent

LINING:

leather

SUPPORTS:

malleolus PU internal

FASTENING:

leather straps with metal
adjustable hooks

FOOTBED:

anatomic and changeable

SOLE:

Vibram® antislip rubber

Leather lining for more
breathability and comfort



CONTINENTAL

RED
SIZES: 38 - 47 EU

UPPER:

calfskin nappa leather
water-repellent

LINING:

leather

SUPPORTS:

malleolus PU internal

FASTENING:

leather straps with metal
adjustable hooks

FOOTBED:

anatomic and changeable

SOLE:

Vibram® antislip rubber

Leather straps with metal
adjustable hooks

Flex point



Daniele Restelli, photo Flavio Carato





Davide Stipe



Davide Stipe



Giovanni Bagni, photo Fabien Marcorelles



Jose Salvans "Stopenno"



Giovanni Bagni, photo Fabien Marcorelles

STEALTH EVO

BLACK YELLOW FLUO
SIZES: 40 - 47 EU

- UPPER:**
microfiber
- LINING:**
breathable air mesh
- SUPPORTS:**
heel + PU shin + shock absorbing
internal padding + shift pad
- ANKLE FLOATING SYSTEM:**
supports the ankle and avoids any
torsion, regulation of the boot leg tilt
- FASTENING:**
zip and toothed bands with adjustable
button and micrometer lever
- JOINTED:**
flexible shock absorber
- AIR INTAKE:**
shin plate and heel backside
- CHANGEABLE SLIDER:**
titanium on toe, PU on heel
- FOOTBED:**
anatomic, antishock and antibacterial
with silver thread
- SOLE:**
anti-slip and hard-wearing rubber

WHITE



BLACK



STEALTH EVO AIR

BLACK YELLOW FLUO
SIZES: 40 - 47 EU

- UPPER:**
perforated microfiber
- LINING:**
breathable air mesh
- SUPPORTS:**
heel + PU shin + shock absorbing
internal padding + shift pad
- ANKLE FLOATING SYSTEM:**
supports the ankle and avoids any
torsion, regulation of the boot leg tilt
- FASTENING:**
zip and toothed bands with adjustable
button and micrometer lever
- JOINTED:**
flexible shock absorber
- AIR INTAKE:**
shin plate and heel backside
- CHANGEABLE SLIDER:**
titanium on toe, PU on heel
- FOOTBED:**
anatomic, antishock and antibacterial
with silver thread
- SOLE:**
anti-slip and hard-wearing rubber



DREAM RS

BLACK YELLOW
SIZES: 35 - 38 EU

- UPPER:**
microfiber
- LINING:**
breathable air mesh
- SUPPORTS:**
malleolus PU internal on both sides +
shin + PU shift pad + heel
- FASTENING:**
zip + hook and loop fastener
- CHANGEABLE SLIDER:**
PU on toe cap
- FOOTBED:**
anatomic and changeable
- SOLE:**
anti-slip and hard-wearing rubber



Micro adjustable
closure system



Titanium
changeable slider



Air
intake

PU changeable slider



Internal fastening zip + hook and loop fastener





Photo Luana Dell'aire



Photo Jonas Z.

Photo Luana Dell'aire

SPEED S1

BLACK
SIZES: 37 - 46 EU

UPPER:
microfiber
LINING:
breathable air mesh
SUPPORTS:
3 inserts with metal stud (2 changeable)
FASTENING:
zip + hook and loop fastener
CHANGEABLE SLIDER:
in PU on toe cap
FOOTBED:
anatomic and changeable
SOLE:
thermoresistant TPU high performance

SPEED JR S1

MULTICOLOUR
SIZES: 29 - 36 EU

UPPER:
microfiber
LINING:
breathable air mesh
SUPPORTS:
1 fixed insert with metal stud
FASTENING:
zip + hook and loop fastener
CHANGEABLE SLIDER:
in PU on toe cap
FOOTBED:
anatomic and changeable
SOLE: thermoresistant TPU high performance

Insert with metal studs



BLACK



OFF ROAD

20



MO TECH SPECIAL

WHITE
SIZES: 39 - 47 EU

UPPER:
water-repellent full grain leather
LINING:
breathable air mesh
SUPPORTS:
inner anatomical antishock filling + hard PU and suede heat shield on the internal side
ANTI-TORSION SYSTEM:
supports the ankle, avoids any torsion without compromising flexibility, made of 2 interchangeable pieces
FASTENING:
4 adjustable and changeable levers with rapid release
CHANGEABLE TOE CAP:
steel
INSERT:
rear silver reflex
FRONT SIDE SUPPORTS:
made of 2 interchangeable pieces
FOOTBED:
anatomic with reinforced heel support
SOLE:
anti-slip and hard-wearing rubber



IDEAL
CONSTRUCTION

QUALITY
LEATHER

BREATHABLE



IMPACT PRO WP

WHITE - BLUE - YELLOW FLUO
SIZES: 38 - 47 EU

UPPER:
microfiber
LINING:
waterproof
SUPPORTS:
malleolus PU internal on both sides + inner anatomical anti-shock filling + shin and heel in PU + spoiler in HF + rubber and suede heat and abrasion shield on internal side
FASTENING:
3 adjustable and changeable levers with rapid release
AIR INTAKE:
shin plate in metal net
FOOTBED:
anatomic
SOLE:
anti-slip and hard-wearing rubber

WHITE - RED



BLACK - YELLOW



IDEAL
CONSTRUCTION

WATERPROOF

BREATHABLE

SPECIAL
GRIP

AIR INTAKE



Lateral
jointed for better
flexibility



IMPACT EVO WP

WHITE
SIZES: 38 - 47 EU

UPPER:
microfiber
LINING:
waterproof
SUPPORTS:
malleolus PU internal
on both sides + inner
anatomical anti-shock
filling + rubber and suede
heat and abrasion shield on
the internal side
FASTENING:
3 adjustable and changeable
levers with rapid release
AIR INTAKE:
shin plate in metal net
FOOTBED:
anatomic
SOLE:
anti-slip and hard-wearing
rubber



- IDEAL CONSTRUCTION
- WATERPROOF
- BREATHABLE
- SPECIAL GRIP
- AIR INTAKE



IMPACT RS WP

BROWN
SIZES: 38 - 47 EU

UPPER:
greasy water-repellent
leather
LINING:
waterproof
SUPPORTS:
malleolus PU internal
on both sides + inner
anatomical anti-shock
filling
FASTENING:
3 adjustable and changeable
levers with rapid release
AIR INTAKE:
shin plate in metal net
FOOTBED:
anatomic
SOLE:
anti-slip and hard-wearing
rubber



- IDEAL CONSTRUCTION
- QUALITY LEATHER
- WATERPROOF
- BREATHABLE
- SPECIAL GRIP
- AIR INTAKE



Pol Tarrés, photo Javi Echevarría Ruiz

POP / MERCHANDISING



POPST00030
STYLMARTIN display urban



POPST00014
Desk display



POPST00033
STYLMARTIN Trolley



POPST00034
STYLMARTIN neck warmer



MERST00009
STYLMARTIN vintage t-shirt
white, grey - woman

MERST00008
STYLMARTIN vintage t-shirt
white, grey - man



POPST00015
Sedia STYLMARTIN
STYLMARTIN chair



MERST00005
STYLMARTIN institutional t-shirt



STYLMARTIN stickers



POPST00016
STYLMARTIN carpet



MERST00003
STYLMARTIN jacket



MERST00001
STYLMARTIN cap



POPST00010
STYLMARTIN TNT banner, 3 meters



POPST00023
STYLMARTIN shopper



POPST00029
STYLMARTIN bag



POPST00027
STYLMARTIN crema delicata
STYLMARTIN delicate cream



POPST00028
STYLMARTIN grasso naturale
impermeabilizzante
STYLMARTIN waterproof grease
protector



POPST00026
STYLMARTIN spray protettivo
impermeabilizzante
STYLMARTIN waterproof spray
protector

POPST00024
STYLMARTIN calzante rosso
STYLMARTIN red shoe horn

SPARE PARTS



KITST00006
Kit oval slider + hook and
loop fastener and metal
inserts art.SPEED



KITST00007
Kit malleolus slider with
metal inserts art.SPEED



KITST00008
Kit toe slider + screws
black SPEED S1, S1JR,
DREAM RS



KITST00047
Kit short buckles for
MILES, MATRIX



KITST00042
TkLf straps carrier + rivets
+ washer, for MILES,
MATRIX



KITST00049
Kit black toe cup for MA-
TRIX + screws



KITST00041
Kit steel toe cup for
off road + screws



KITST00045
Kit long + short drais buck-
les for off road



KITST00044
Kit drais base lever +
screws



KITST00003
Kit base for black and
steel slider art.
SONIC, DIABLO



KITST00005
Kit steel slider DIABLO
+ screws



KITST00004
Kit black slider
DIABLO + screws



KITST00026
Kit titanium slider
STEALTH + screws



KITST00025
Kit silver heel slider +
screws



KITST00022
Kit cover malleolus black
ext-int STEALTH



KITST00023
Kit ext. toothed band
white + button + screws
STEALTH



KITST00024
Kit ext. toothed band
black + button + screws
STEALTH



KITST00020
Kit ext. Heel cover white
+ air intakes + screws
STEALTH



KITST00021
Kit ext. Heel cover black +
air intakes + screws
STEALTH



KITST00027
Kit internal micrometer
lever + toothband +
screws



KITST00050
Kit black laces for YU'ROK



KITST00051
Kit red laces for YU'ROK



KITST00052
Kit brown laces for YU'ROK



KITST00053
Kit garden green laces
for YU'ROK



KITST00076
Shift pad red



KITST00075
Shift pad black



KITST00074
Shift pad dark brown



KITST00054
Kit dirty white laces

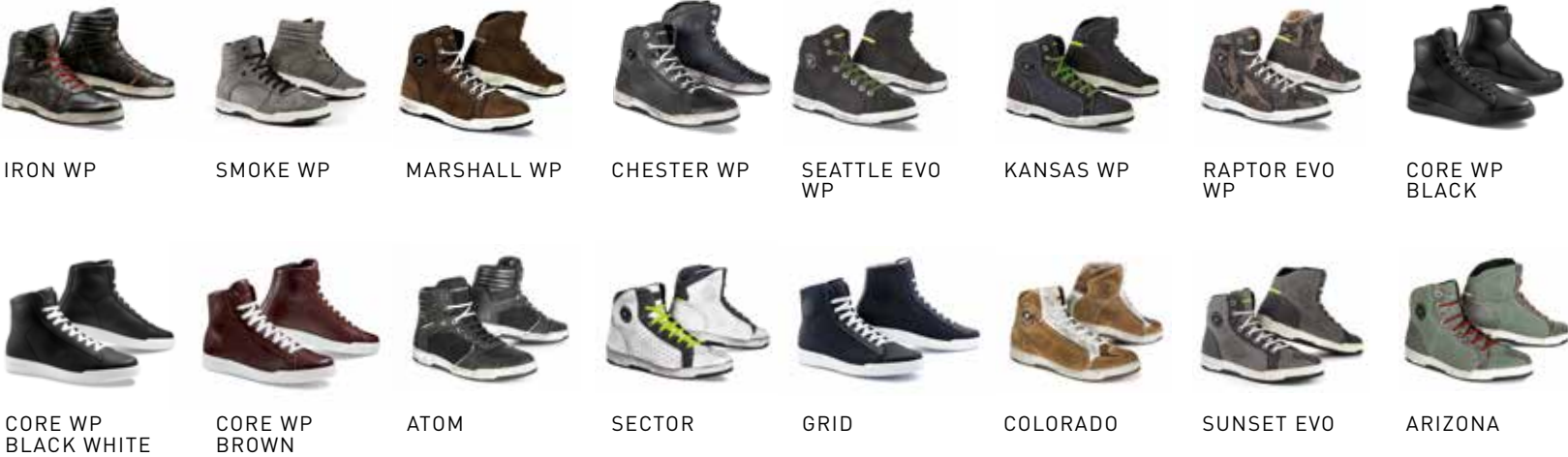


KITST00055
Kit black/yellow-fluo
laces



KITST00056
Kit dirty red laces

SNEAKERS



SPORT U



URBAN



TOURING



RACING



MINIMOTO

OFF ROAD

