

**STEADILY
OFF ROAD**



PRODUCT CATALOG

STEAHLY OFF ROAD

Note from the president

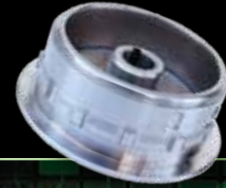
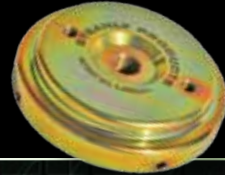
When we started making flywheel weights in 1987 very few riders understood the benefits of adding flywheel weights. Since then the popularity of adding flywheel weights has increased dramatically. More and more riders discover that they can go faster for longer with the smooth power delivery, better traction, and reduced stalling that Steahly flywheel weights provide. Adding a flywheel weight will increase the rotating mass, or inertia, of the motor. The result is an engine that is a bit slower to rev, has more controllable power delivery and less hard hitting power, a more usable low to mid-range and is less likely to stall at slow speeds or with the rear brake. What you will feel is better traction when it is slippery or hard pack, a torquier and broader powerband, and the top end power on many bikes will be improved with less tendency to lose RPM's when climbing or hitting obstacles. The easier to control power will help you conserve your strength and energy, plus many bikes start easier with the added weight.

Steahly flywheel weights for most two-strokes and some four-strokes screw over top of the stock ignition flywheel using our exclusive patented mounting system and can be installed in less than a half hour without removing the stock flywheel from the engine. They are also easily removed so you can change the power delivery back to stock for different riding conditions.

For many of the modern four-strokes we offer complete flywheel replacements. To install one you simply take off your stock flywheel and put on a heavier Steahly flywheel. Installation is easy but you will need the correct flywheel puller.

Steahly flywheel weights are machined from solid steel billet on computer operated lathes for the ultimate in balance, trueness and strength. Our weights are designed to fit each specific model of motorcycle for a perfect fit and best possible performance. For most models we offer several different weight sizes so you can choose the amount of weight to suit your riding style and conditions. Call us and we will be happy to discuss your situation and make suggestions.

We also carry a wide range of other off road accessories, many of which are special or hard to find. We specialize in enduro accessories such as skid plates, guards, tools, chain guides, kick stands and lighting kits. All of us at Steahly Off Road are serious dirt riders and racers and the products we sell have been used and tested under real riding and racing conditions.



Chuck Steahly



CHUCK STEAHLY

With over 30 years of off road racing experience Chuck knows what today's riders need. He started Steahly Off Road in 1987 to supply those needs to riders. His patented flywheel weighting system now sells worldwide to off road racers, trail riders, motocrossers, dirt trackers, and hill climbers. Chuck designs many of the Steahly flywheel weights himself and puts the products in this catalog to rigorous torture tests to insure that our customers get the quality they deserve.

Enduro Engineering

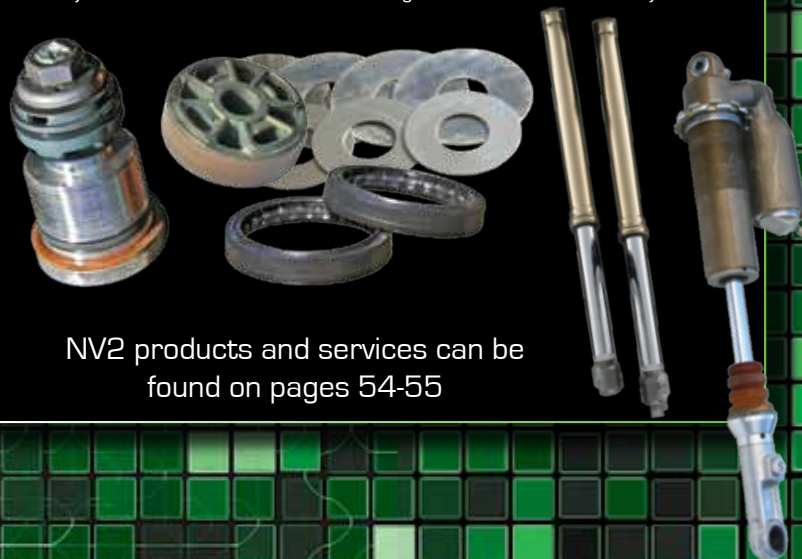
Enduro Engineering started building high performance off-road racing products to fill the needs of local racers back in 1987. Now more than 20 years later they still have the same philosophy, to insure that their products will stand up to the high demands of the top level racers around the world and the average riders alike. We are now pleased to be the West Coast distributor for Enduro Engineering. We stock the full line of EE products and orders will usually ship same day. Dealers and retail customers West of the Rockies can now get their EE products 2 to 3 days sooner.



Enduro Engineering products can be found on pages 26-37

NV2

Through many years of testing with championship winning riders like 8-time National Enduro Champion Mike Lafferty and rising Enduro star Cole Kirkpatrick Enduro Engineering has developed suspension settings surpassed by none in the industry. We are now pleased to be partnered with NV2 and Enduro Engineering to bring this level of performance to riders in the West. Our settings take Enduro Engineering's championship winning settings and adapt them for the demands for western riding. Whether it's a routine oil change or a complete re-valve our suspension department is second to none! We will tailor your suspension to meet the needs of your riding environment. Based on the information provided by you, we will fit your riding style with a suspension setup that will increase your comfort, confidence and speed on your motorcycle. We use a philosophy to personalize your suspension based on your individual needs, so we look at your likes, dislikes, style of riding, ability and area that you ride. We use this to give you a custom suspension setting, tailored for you, not a cook book setting. So whether you're a trail rider, racer or something in between, we have what you need.



NV2 products and services can be found on pages 54-55

CR 500R

A Steahly Flywheel Weight will transform this beast into a traction monster. The bike will be much easier to ride and will get the power to the ground. All woods riders will love it and many motocross riders will benefit from the more usable and less tiring power delivery. Flat trackers and hill climbers will also enjoy the more usable power it will provide. Used by Harold Waddell to win the AMA Amateur National Hill Climb Championship.



CR 250R

For reduced stalling and a smoother, more controlled and tractable power delivery use a Steahly flywheel weight. Most riders will ride better and longer with our flywheels, just like Ryan Hughes did with his win at the inaugural Las Vegas Enduro Cross.

2003-2007 CR250R

The 2003 to 2007 CR flywheel weights that add 6, 8, and 10 ounces are very easy to install. The installation of the 12 ounce is a little more involved because you must grind down a small flange on the inside of the ignition cover. The 6, 8, and 10 ounce need no modifications.

2002 CR250R

The 2002 model is similar, the 10 ounce needs no modifications but the 12 and 14 ounce require a little grinding.

1986-2001 CR250R

On 1986 to 2001 models all the weights are simple to install with no drilling, grinding or welding. Check out our Engine Lock Up Tool (E-3) to make installation even easier.



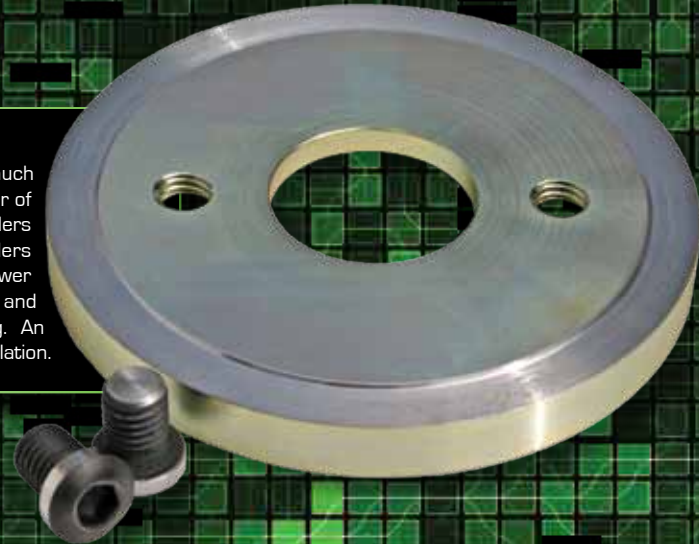


CR 85

This simple mod will make it much easier to control the light switch like power delivery of the little CR. Most woods and trail riders will benefit. Beginner and timid riders will do better because with smoother power and less stalling they will experience less frustration and fatigue. Quick and easy installation without any drilling, grinding, or welding. The engine lock up tool [E-3] will make it even easier.

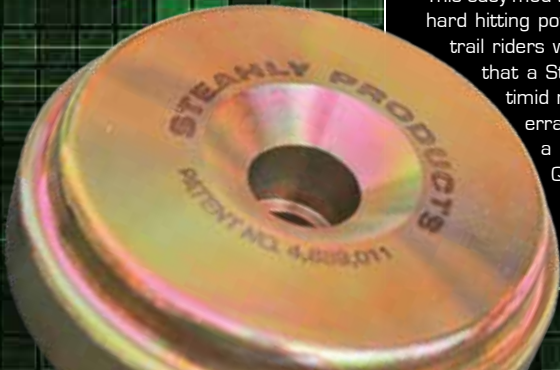
CRF 150R

This is a simple mod that will make it much easier to control the hard hitting power of the little CRF. Most woods and trail riders will benefit. All beginner and timid riders will do better because the smoother power and less stalling will reduce frustration and fatigue. No drilling, grinding, or welding. An E-63 flywheel puller is needed for installation.



CR 125R

This easy mod will make it much easier to control the hard hitting power of the CR125. Most woods and trail riders will benefit from the smoother power that a Steahly weight creates. Beginner and timid riders will do better because the less erratic power will mean less stalling and a reduction in frustration and fatigue. Quick and easy installation, without any drilling, grinding, or welding, and the engine lock up tool [E-3] will make it even easier.



HONDA APPLICATION CHART

Model	Flywheel Weight Part Number and Size			
CR 80 85 96-04				509 (10oz)
CR 85 05-07	624XL (7oz)	624L (9oz)	624 (11oz)	
CR 125 90-00	506XL (8oz)	506L (10oz)	506 (12oz)	
CR 125 01-03	510L (7oz)	510 (9oz)		
CR 125 04-07	516L (6oz)	516 (8oz)	516H (10oz)	
CRF 150R 07-09	520L (7oz)	520 (9oz)		
CR 250 90-01	506XL (8oz)	506L (10oz)	506 (12oz)	506H (14oz)
CR 250 02	511L (10oz)	511 (12oz)	511 (12oz)	511H (14oz)
CR 250 03-07	514XL (6oz)	514L (8oz)	514 (10oz)	514H (12oz)
CRF 250R 04-09	517XL (9oz)	517L (11oz)	517 (13oz)	517H (15oz)
CRF 250X 04-09	517XL (6oz)	517L (8oz)	517 (10oz)	517H (12oz)
CRF 450R 02-03			512 (9oz)	
CRF 450R 04-08	517L (9oz)	517 (11oz)	517H (13oz)	515H (17oz)
CRF 450R 09				521H (17oz)
CRF 450R 09 Steel Clutch Basket				389 (10oz)
CRF 450X 05-09 / CRF 450R 02-07 / CR 250 02-07 Steel Clutch Basket				189 (10oz)
CRF 450X 05-09				519 (9oz)
CR 500 87-01				505L (11oz) 505 (13oz) 505H (15oz)



A. 09-10 CRF 450R

Honda's latest version of the CRF 450 is great all around, but it needs more flywheel weight to reduce stalling and make the power more controllable. We sell a complete replacement flywheels in 11 and 17 ounce sizes. Installation is easy, you simply replace your stock flywheel. You will need a flywheel puller [E-662].

B. 04-08 CRF 450R

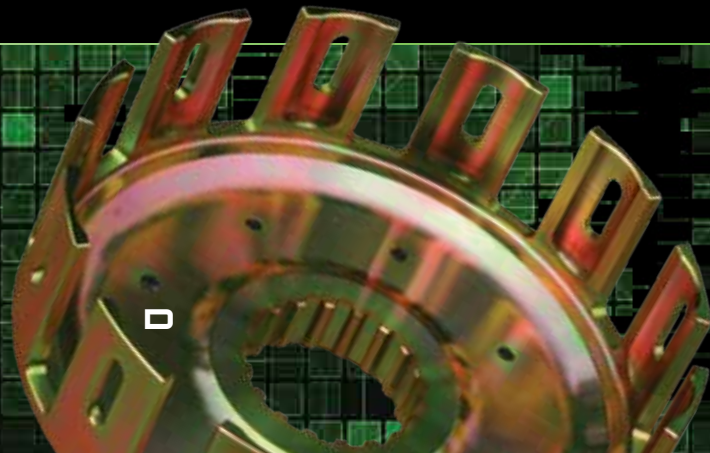
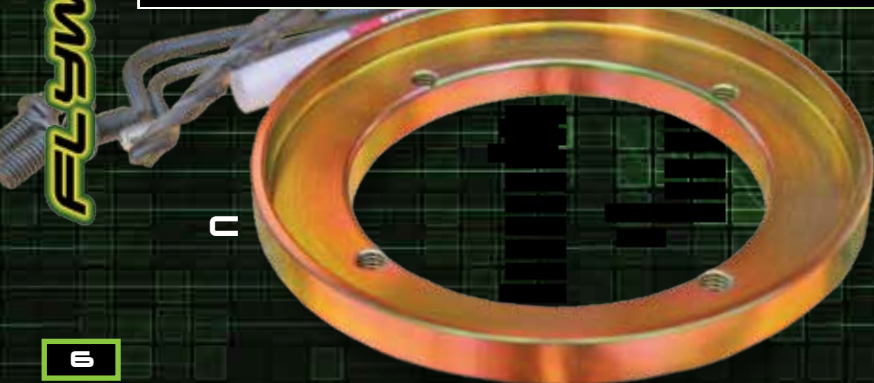
These CRF 450s are great all around bikes, but need more flywheel weight to reduce stalling and make the power more controllable. We sell complete replacement flywheels in many different weight sizes to suite all riding styles and types of terrain. Installation is easy, you just replace your stock flywheel (only the 17oz size requires a little grinding on the inside of the ignition cover). You will need a flywheel puller [E-63] and possibly a new ignition cover gasket [Y-6011].

C. 02-03 CRF 450R

A bolt on weight that requires drilling 4 holes in the stock flywheel and a little grinding on the inside of the ignition cover. Kit includes drill bits, drill guide, and Loctite. You will need a flywheel puller [E-63] and probably a new gasket [Y-6011].

D. HEAVYWEIGHT STEEL CLUTCH BASKET

For those that want to add even smoother and more tractable power characteristics than is available after installing our heaviest flywheel weights or if you are looking for more durability. Our heavyweight clutch basket will provide the same power smoothing properties as adding approximately 10 ounces of flywheel weight. The plated steel construction of this basket insures the longest life and best durability of any basket on the market, even for serious clutch abusers.





CRF 250X

A great woods bike that needs more flywheel weight for slow going and technical trails. Casual and less aggressive riders will also benefit from adding some weight. Easy installation. You need a flywheel puller (part E-63).



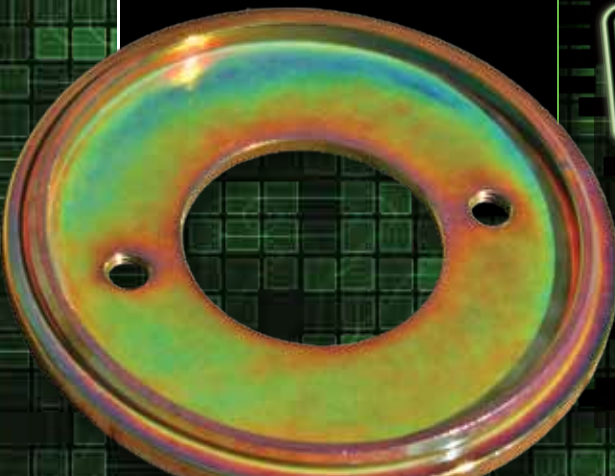
CRF 250R

Our heavy flywheel makes this bike much easier to ride in the more technical sections. Easy to install. You must use the E-63 flywheel puller for installation. You may also want to get a Y-6100 cover gasket.

CRF 450X

This bike needs more flywheel for slower and technical riding. Reduce stalling and increase tractability with our bolt on weight. Attaches to the stock flywheel with two special bolts. Thread lock compound included. Easy to install with the correct flywheel puller (part E-662). You may need a gasket (part Y-6193).

RECOMMENDATION GUIDE



	CRF 500	CRF 450R	CRF 450R 04-08	CRF 450R 09-10	CRF 450X	CR 250 03-07	CR 250 08-08	CR 125 04-07	CR 125 07-09	CR 80/85 90-00	CRF 250R 96-09	CRF 250R 03-08	CRF 250X	Y6100	
Smooth Power Lovers, Novice Trail Riders, Technical Trails	15	9	17	17	9	12	14	10	9	12	10	11	15	12	0
Intermediate Woods Racers, Intermediate Trail Riders	15	9	15	17	9	10	12	8	7	10	10	9	13	10	0
Aggressive Woods Riders, Desert Riders, Novice & Vet MX Riders	13	9	13	17	9	8	10	6	7	8	10	7	11	8	7
MX, SX, Aggressive Desert Riders, Extremely Aggressive Woods Riders	11	9	11			6	8						9	6	7

Flywheel Weight
Size (oz.)

These recommendations are based on our opinion. It is just a general guide and personal preference, riding ability, and bike setup should be considered. Call if you would like to discuss this in detail.

KX250

The Steahly Flywheel will enhance the strong power of the KX 250 engine, making it more tractable and easier to ride. Several different sizes are available for all types of riding, whether it's MX, desert or woods. Used by Team Green's Destry Abbott. Easy to install or remove, especially when using the E-3 engine lock up tool.



KX125

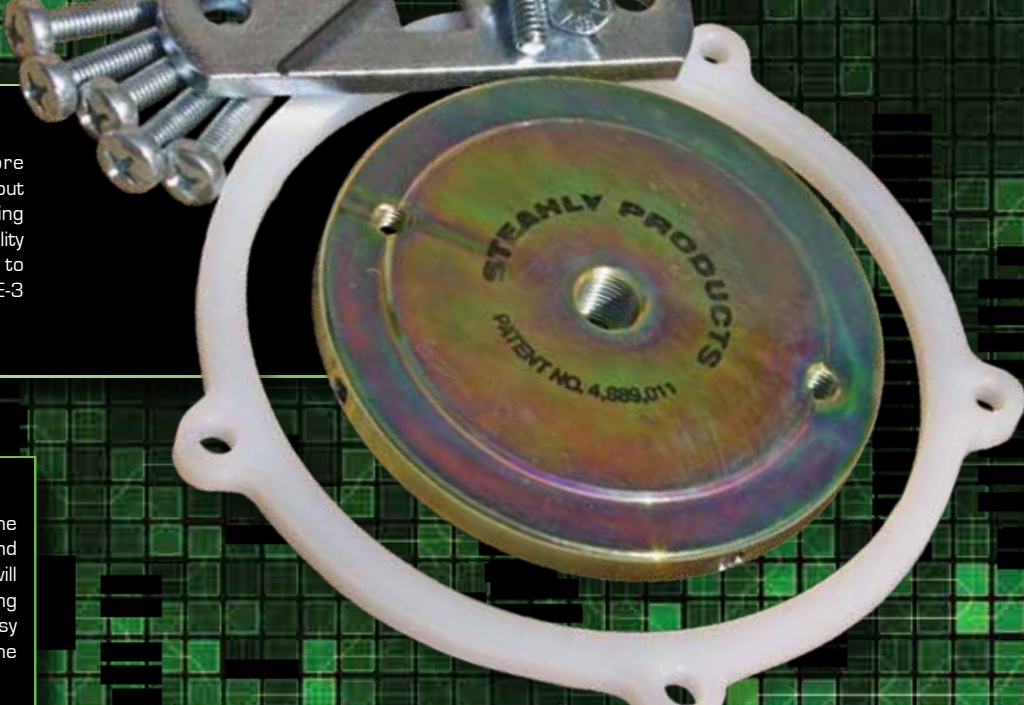
Make your 125 power smoother and easier to control with a Steahly Flywheel Weight. Soften the hit and make it more chuggable. Most woods riders will benefit as well as all beginner and timid riders. Easy bolt on installation, no drilling, grinding or welding. Consider getting the engine lock up tool [E-3] to make installation and removal even easier.

KDX

The KDX 200 and 220 have more flywheel than most motocross bikes, but many riders want more weight for riding technical trails or to regain tractability after hopping up the motor. Easy to install, especially when using the E-3 engine lock up tool.

KX MINIS

This easy mod will make it much easier to control the hard hitting power of the little KX. Most woods and trail riders will benefit. All beginner and timid riders will do better with the smoother power and less stalling that will reduce frustration and fatigue. Quick and easy installation, without any drilling, grinding or welding. The engine lock up tool (E-3) will make it even easier.

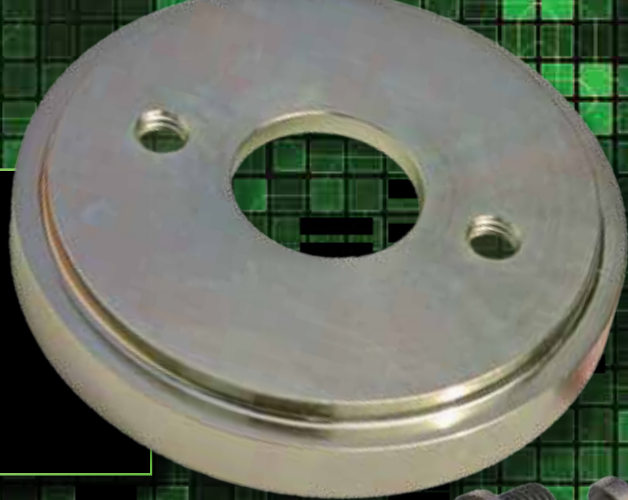


KAWASAKI APPLICATION CHART

Model	Flywheel Weight Part Number and Size		
KX 65 00-09	605XL (8oz)	605L (10oz)	605 (12oz)
KX 60, 80, 85, 100 88-09 (adaptable to KX 80 81-87)	606XL (8oz)	606L (10oz)	606 (12oz)
KX 125 92-97 (adaptable to 87-90)	614XL (8oz)	614L (10oz)	614 (12oz)
KX 125 03-07 (fits 98-02 if used with a Y-P614 spacer)	623L (7oz)	623 (9oz)	
KDX 200, 220 90-06 (adaptable to 89)		609 (10oz)	
KX 250 83-89	603XL (8oz)	603L (10oz)	603 (12oz)
KX 250 90-97	608XL (8oz)	608L (10oz)	608 (12oz)
KX 250 98-01	619XL (7oz)	619L (9oz)	619H (13oz)
KX 250 02 and 04 (not 03)	621XL (7oz)	621L (9oz)	621H (13oz)
KX 250 03	622XL (7oz)	622L (9oz)	622H (13oz)
KX 250 05-07	624XL (7oz)	624L (9oz)	624H (13oz)
KX 250F 04 (complete flywheel)	717L (5oz)	717 (7oz)	
KX 250F 05-08 (complete flywheel)	718L (5oz)	718 (7oz)	
KX 250F 09 (complete flywheel)	718L (4oz)	718 (6oz)	
KX 450F 06-08	625L (7oz)	625 (9oz)	625H (11oz) 625-13 (13oz)
KX 450F 06-09 / KLX 450 08 Steel Clutch Basket		263 (10oz)	
KX 500 86-89 (Europe 86-88)		604 (16oz)	
KX 500 90-91 (Europe 89-91)		607 (14oz)	
KX 500 92-04		615 (14oz)	

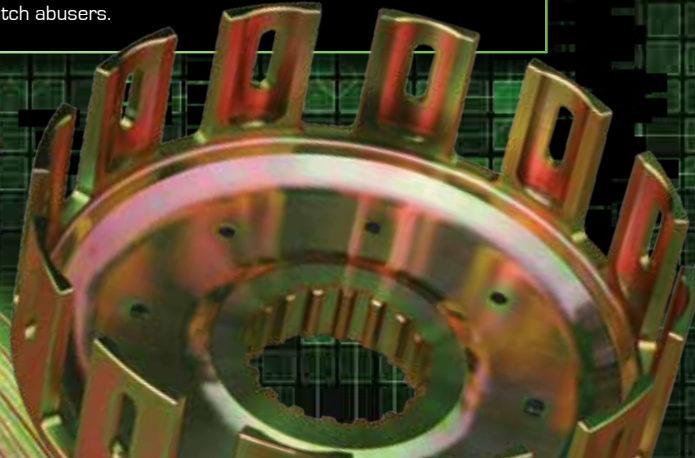
KX450F

Adding a flywheel weight will make the KX 450 much easier to ride. It will make the power smoother and less tiring, help get the power to the ground and let you chug down lower in the RPM range with less chance of stalling. Great for MX, enduro, trail, desert and flat track. Used by Destry Abbott to win the 2006 Hare and Hound Championship. Easy installation with our E-63 flywheel puller.



KX450F HEAVYWEIGHT STEEL CLUTCH BASKET

For those that want to add even smoother and more tractable power characteristics than is available after installing our heaviest flywheel weights or if you are looking for more durability. Our heavyweight clutch basket will provide the same power smoothing properties as adding about 10 ounces of flywheel weight. The plated steel construction of this basket insures the longest life and best durability of any basket on the market, even for serious clutch abusers.



KX 500

Adding flywheel weight to the KX 500 will make the power smoother, more tractable, and more controllable. It will get the power to the ground better, making the bike easier to ride and less tiring. Easy to install with our patented mounting system. Our E-3 engine lock up tool now fits open two strokes for making installation very easy.



KX250F

Make this descent woods bike into a great woods bike. Increase tractability and resistance to stalling. Comes as a complete flywheel for quick and easy installation. You will need a flywheel puller [E-63]. Used by Colton Haaker to win the 2009 Endurocross Junior Pro Championship.



RECOMMENDATION GUIDE

Smooth Power Lovers, Novice Trail Riders, Technical Trails
 Intermediate Woods Racers, Intermediate Trail Riders
 Aggressive Woods Riders, Desert Riders, Novice & Vet MX Riders
 MX, SX, Aggressive Desert Riders, Extremely Aggressive Woods Riders

KX 500
KX 450F
KX 250 98-07
KX 250 99-97
KX250F 04-08
KX250F 09
KDX 200, 220
KX 125 98-07
KX 125 97-97
85, 100

14	13	13	12	7	6	9	10	9	12	12
14	11	11	12	7	6	7	10	7	10	10
14	9	9	10	5	7	5		7	8	8
				7	7	8				

Flywheel Weight:
 Size (oz.)

These recommendations are based on our opinion. It is just a general guide and personal preference, riding ability, and bike setup should be considered. Call if you would like to discuss this in detail

200 EXC, MXC, XC, XC-W 98-07

Our flywheels are very popular for the 200, which can be too zingy for technical or slippery trails. Two sizes to choose from; a 9 ounce for faster-more aggressive riders or a 12 ounce for more casual riders. Easy to install. Consider getting an engine lock up tool [E-3] for easier installation.

250 SX 07-10 250 EXC, MXC, XC, XC-W 98-07

Amazing traction, smooth power, and reduced stalling accomplished by this easy to install flywheel weight. Also check out the engine lock up tool to aid installation.



250 SX 97-06

Enhance the torque power delivery of the SX, get the power to the ground and make it more chuggable. Used by our own Derek Steahly to win three Oregon AA Cross Country championships. Easy to take on and off, especially when using our E-3 engine lock up tool. Four sizes available to make the power perfect for your riding style. The 12 ounce weight will give it about the same flywheel as an EXC model.

125, 144, 150 SX

The horsepower king of the 125s needs a little more flywheel to work its best off road. Make the power more controllable and reduce stalling with a Steahly flywheel. Easy to bolt on or take off, especially with the engine lock up tool [E-3]. Four different sizes available to suite riders of all abilities (see recommendation guide). The 12 ounce weight is recommended only for timid riders.

KTM APPLICATION CHART

65 SX, XC 03-08		913 (7oz)		
85, 105 SX, XC 03-10		910 (7oz)		
125, 144, 150 SX 97-10	903XL (6oz)	903L (8oz)	903 (10oz)	903H (12oz)
200 XC, XCW 08-10 / 200 SX 03-04 / 200 EXC 97-99 / 125, 200 Europe EXC 98-10			902L (9oz)	902 (11oz)
200 EXC, XC, XCW 00-07 USA / 200 MXC 98-05 USA			921L (9oz)	901 (12oz)
250 SX 250-360 97-99	991XL (6oz)	991L (8oz)	991 (10oz)	991H (12oz)
250 SX 00-02 / SX 380 00	903XL (6oz)	903L (8oz)	903 (10oz)	903H (12oz)
250 SX 03-06	906XL (6oz)	906L (8oz)	906 (10oz)	906H (12oz)
250 SX 07-10			921L (9oz)	921 (11oz)
250, 300, 380 EXC, MXC 98-99 USA			993L (9oz)	993 (12oz)
250 EXC, MXC 00-03 USA / 300 MXC 00-03 USA / 300 EXC 00 USA			921L (9oz)	901 (12oz)
250 EXC, XC, XCW 04-07 USA			921L (9oz)	921 (11oz)
300 EXC 01-03 / 380 EXC, MXC, SX 01-03 / 250 Europe & AU EXC 01-03			905L (9oz)	905 (11oz)
300 EXC, MXC, XC, XCW 04-07 / 250 Europe & AU EXC 04-07		907L (9oz)	907 (11oz)	
250, 450, 505 SX 07-09 / 450, 505, 530 XCF 08-09 (complete flywheel)			911 (8oz)	
520 SX 00-02 / 400 SX 00-01 (complete)		909M (-10oz)	909L (7oz)	909 (9oz)
400, 450, 525 EXC, MXC, XC, XCW 05-07 (complete flywheel)	909M (-7oz)	909XL (7oz)	909L (10oz)	909 (12oz)
450, 520, 525 SX 00-06 / 525 SX 07 / 400 SX 00-06 (complete flywheel)			908L (10oz)	908H (18oz)

**200 XC, XC-W 08-10
200 EXC 97-99 / 200 SX**

Get a smoother and more predictable power delivery, Better traction, more control and less stalling. Easy to install especially with an engine lock up tool (E-3).

300 MXC, EXC, XC, XC-W 01-07

More traction and easy to control power is possible with a Steahly flywheel.

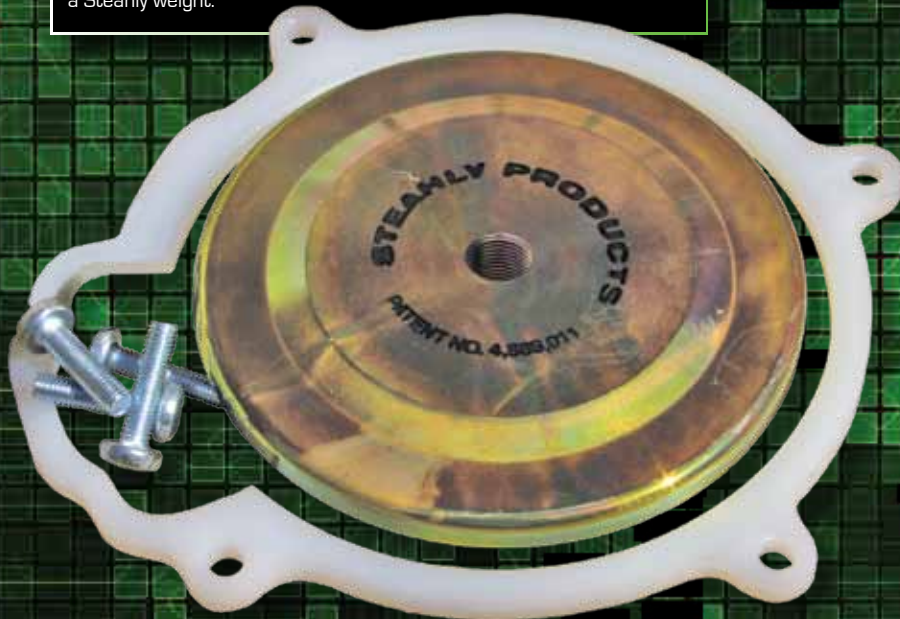
380 SX, MXC, EXC

The big KTM 380 is a hand full, especially in technical or slippery conditions. Make the power more tractable and easier to control with a Steahly weight.



65, 85 , 105 SX / XC

This easy mod will make it much easier to control the hard hitting power of the little KTM. Most woods and trail riders will benefit. All beginner and timid riders will do better because the smoother power and reduced stalling will lessen frustration and fatigue. Quick and easy installation, without any drilling, grinding, or welding. The engine lock up tool (E-3) will make it even easier.



FLYWHEEL WEIGHTS

RECOMMENDATION GUIDE

250 2-T OFF ROAD EARLY
 250 2-T OFF ROAD
 300-380 01-03
 300 LATE MODEL
 250SX 97-10
 250SX 07-10
 125, 144, 150 SX
 4-STROKE 00-04
 4-STROKE 07-10
 4-STROKE 02-06
 4-STROKE E/MXC 00-04
 KTM MINI E/MXC 05-07

Smooth Power Lovers, Novice Trail Riders, Technical Trails	12	11	12	11	12	12	11	10	8	18	9	12	7
Intermediate Woods Racers, Intermediate Trail Riders	12	11	12	11	9	10	9	8	8	18	7	10	7
Aggressive Woods Riders, Desert Riders, Novice & Vet MX Riders	9	9	9	9	9	8	9	8	8	10	7	7	7
MX, SX, Aggressive Desert Riders, Extremely Aggressive Woods Riders						6		6	8	10	-7	-7	

These recommendations are based on our opinion. It is just a general guide so personal preference, riding ability, and bike setup should be considered. Call if you would like to discuss this in detail.

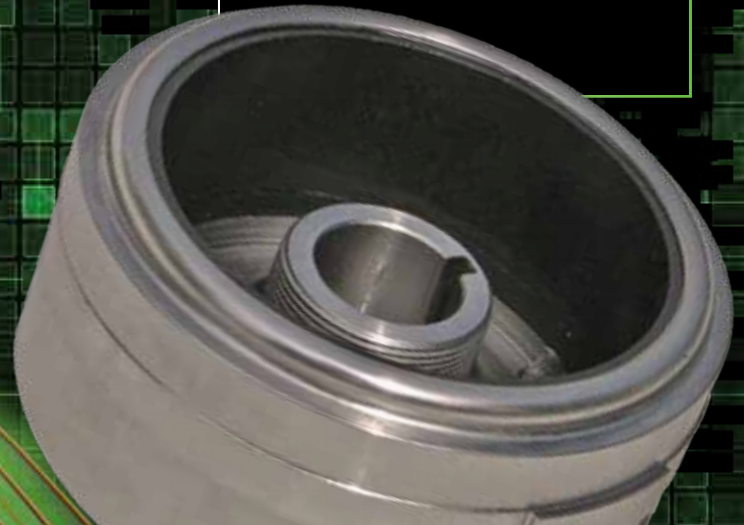
Flywheel Weight:
 Size (oz.)

250 SX-F

Smooth out the power of the 250 SXF with a heavier complete flywheel. Easy installation, simply remove your stock flywheel and bolt this one on in its place. A flywheel puller is needed (E-46).

450 SX-F (TWIN CAM)

Adding more flywheel is a must for the fast revving and hard hitting 450. Smooth out the power delivery with our 8 oz. heavier flywheel. Use our E-46 puller for easy installation.

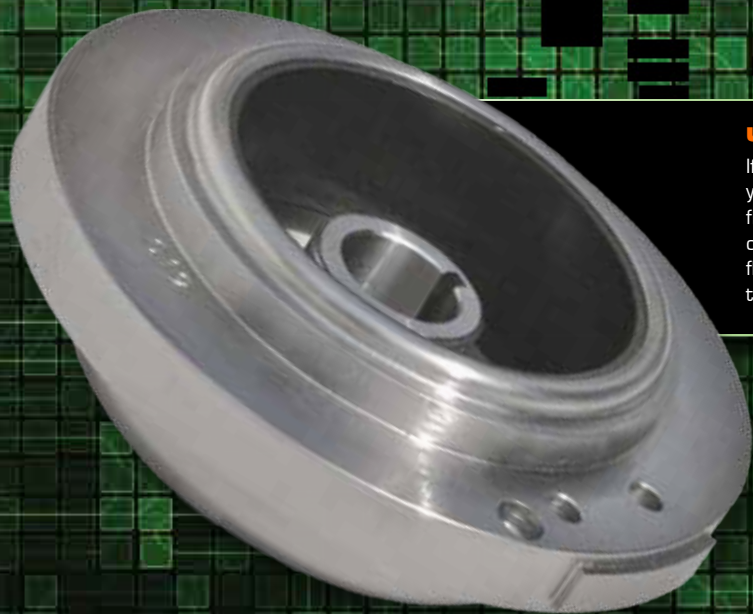
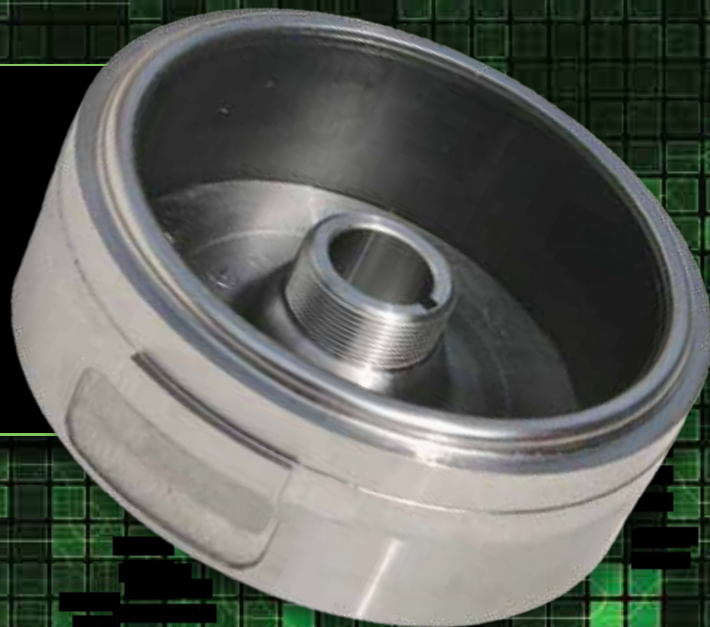


520, 525 EXC, MXC, XC, XC-W

If you ride a 520-525 in the woods you have got to get one of the heavier complete flywheels to make the power easier to control. A flywheel puller is required for installation [E-46].

400, 450 EXC, MXC, XC, XC-W

Casual riders and guys that ride slow technical trails with enjoy a heavier flywheel on the KTM 4 strokes. If you ride your 400-450 in faster terrain you will like one our lighter than stock flywheels [weight is in between the stock SX and the EXC flywheel sizes], which will allow the revs to build faster for zippiier power. You will need an E-46 puller for the installation.



400, 450, 520, 525 SX

If you ride one of these anywhere but fast open terrain you will really appreciate one of our heavier complete flywheels. Reduce stalling, make the power easier to control and less tiring. Easy to install with the proper flywheel puller [E-46]. Several different weights available to suite most riding styles.





RM 250

The RM has less flywheel than the other 250 MXers, which can make it stall easily and difficult to control when traction is not perfect. Gain tractability and stall resistance by adding a Steahly Flywheel, just like Rodney Smith has done to win 5 GNCC and multiple Hare Scrambles championships. Listed in Motocross Action magazine as one of the 35 products guaranteed to make you faster. They said "...makes the bike feel torque and more manageable. Each gear pulls farther, harder and longer."

RM 125

Make your 125 power smoother and easier to control with a Steahly Flywheel Weight. Soften the hit and make it more chuggable. Most woods riders will benefit as well as all beginner and timid riders. Easy bolt on installation, no drilling, grinding or welding. Consider getting the engine lock up tool [E-3] to make installation and removal even easier. Used by Andrew Short to win the 2003 Las Vegas Supercross Lites East/West Shootout on his RM 125.

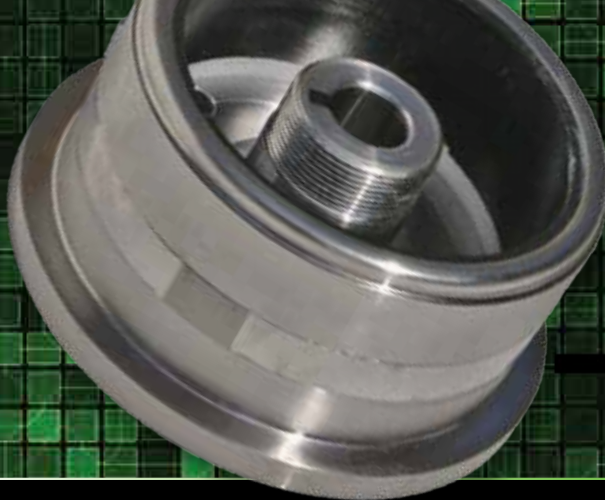


RM 60, 65, 100

This easy mod will make it much easier to control the hard hitting power of the little RM. Most woods and trail riders will benefit. All beginner and timid riders will do better because the smoother power and less stalling will reduce frustration and fatigue. Quick and easy installation, without any drilling, grinding, or welding, but the engine lock up tool [E-3] will make it even easier. Does not fit RM 80cc or 85cc.



SUZUKI APPLICATION CHART



RM-2 250

Make this descent woods bike into a great woods bike. Increase tractability and resistance to stalling. Comes as a complete flywheel for quick and easy installation. You will need a flywheel puller [E-63].

RM-2 450 HEAVYWEIGHT STEEL CLUTCH BASKET

For those that want to smoother and more tractable power characteristics or if you are looking for more durability. Our heavyweight clutch basket will provide the same power smoothing properties as adding 10 ounces of flywheel weight. The plated steel construction of this basket insures the longest life and best durability of any basket on the market, even for serious clutch abusers.



Model

RM 65 03-05
 RM 60, 100 03
 RM 125 98-00 [adaptable to 87-97]
 RM 125 01-03
 (04-05 measure stock flywheel)
 RM 125 06-08
 (04-05 measure stock flywheel)
 RM 250 89-93 [adaptable to 87-88]
 RM 250 94-95
 RM 250 96-00
 RM 250 01-02
 RM 250 03-08
 RMZ 250 04 [complete flywheel]
 RMZ 250 05-06 [complete flywheel]
 RMZ 450 08-09 Steel Clutch Basket

Flywheel Weight Part Number and Size

605XL (8oz)	605L (10oz)	605 (12oz)
606XL (8oz)	606L (10oz)	606 (12oz)
711XL (6oz)	711L (8oz)	711 (10oz)
714XL (7oz)	714L (9oz)	714 (11oz)
719L (6oz)	719 (8oz)	719H (10oz)
705XL (6oz)	705L (8oz)	705 (10oz)
709XL (6oz)	709L (8oz)	709 (10oz)
710XL (6oz)	710L (8oz)	710 (10oz)
710H (12oz)	710H (12oz)	710H (12oz)
712XL (7oz)	712L (9oz)	712 (11oz)
712H (13oz)	712H (13oz)	712H (13oz)
715XL (6oz)	715L (8oz)	715 (10oz)
717L (5oz)	717 (7oz)	717 (7oz)
718L (5oz)	718 (9oz)	718 (9oz)
	330 (10oz)	330 (10oz)

RECOMMENDATION GUIDE

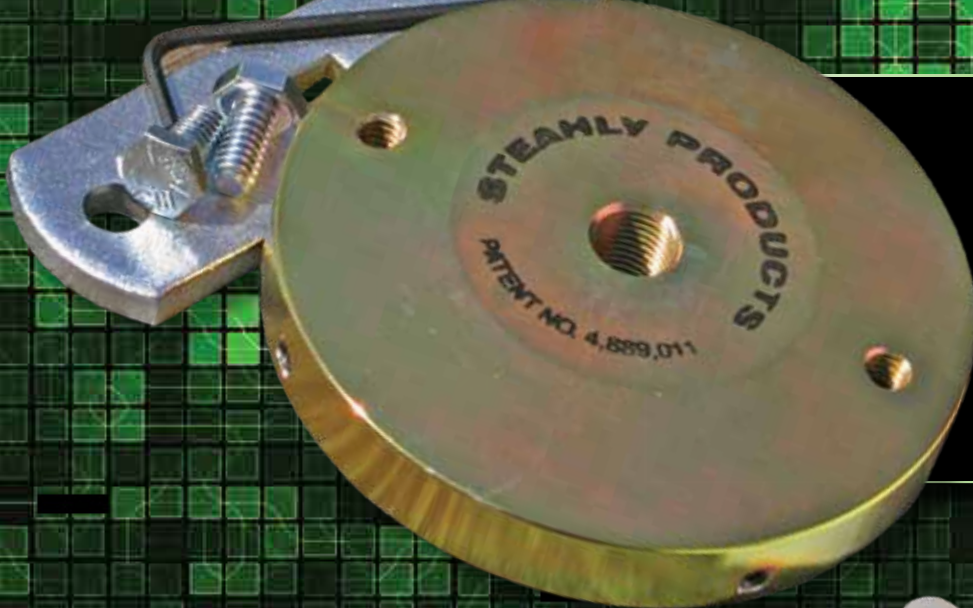
Smooth Power Lovers, Novice Trail Riders,
 Technical Trails
 Intermediate Woods Racers, Intermediate
 Trail Riders
 Aggressive Woods Riders, Desert Riders,
 Novice & Vet. MX Riders
 MX, SX, Aggressive Desert Riders,
 Extremely Aggressive Woods Riders

RM-2 450
 RM 250 03-08
 RM 250 01-02
 RM 250 96-00
 RM-2 250
 RM 125 01-08
 RM 60, 65, 100

10	10	13	12	10	7	10	10	12
10	10	11	10	10	7	8	8	10
10	8	9	8	8	5	6	6	8
	6	7	6	6				

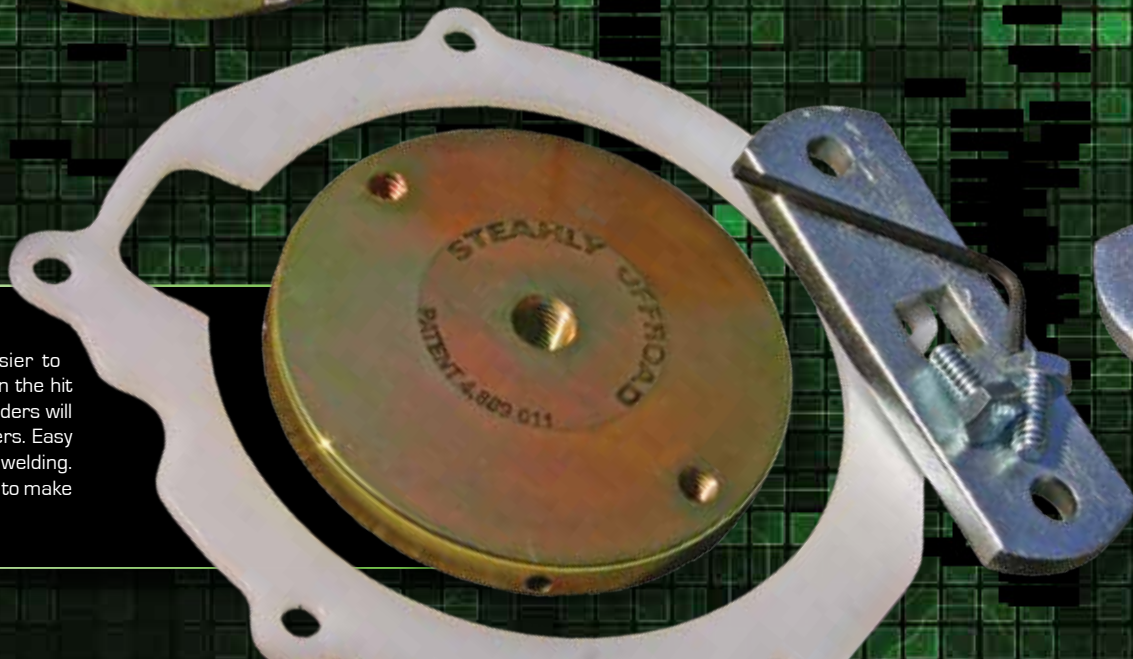
Flywheel Weight
 Size (oz.)

These recommendations are based on our opinion. It is just a general guide and personal preference, riding ability, and bike setup should be considered. Call if you would like to discuss this in detail.



YZ 250

Make your power as smooth and tractable as Randy Hawkins YZ when he won the 2004 National Enduro Championship. Reduce stalling like Jason Raines when he added a Steahly Flywheel for his 2003 and 2004 National Hare Scrambles Championships. Get predictable and reliable power like Barry Hawks GNCC Championship winning YZ 250. Easy installation, no special tools needed, but an E-3 engine lock up tool will make it easier.



YZ 125

Make your 125 power smoother and easier to control with a Steahly flywheel weight. Soften the hit and make it more chuggable. Most woods riders will benefit as well as all beginner and timid riders. Easy bolt on installation, no drilling, grinding or welding. Consider getting the engine lock up tool (E-3) to make installation and removal even easier.

YAMAHA

YZ 80/85

Adding a flywheel weight is the most cost effective way to make the power easier to control and more predictable. Easy installation, especially when using the E-3 engine lock up tool.

STEADLY PRODUCTIONS
PATENT NO. 4,889,011

STEADLY OFFROAD
PATENT 4,889 011

YZ 450F 03-05

Our patented mounting system makes installation and removal easy. No drilling, welding, or grinding. A must for YZ450F for all types of riding.

03-09 YZ 250F

Make your 250F better for slippery conditions and trails. Our patented mounting system makes installation and removal easy. No drilling, welding, or grinding.

YAMAHA APPLICATION CHART

Model	Flywheel Weight Part Number and Size			
YZ 80 97-01 (also 84-96 by adding a Y-P spacer)		816L (8oz)	816 (10oz)	816H (12oz)
YZ 85 02-09	819XL (7oz)	819L (9oz)	819 (11oz)	
YZ 125 94-95 (adaptable to 88-93)		806XL (8oz)	806L (10oz)	806 (12oz)
YZ 125 96-04		815L (7oz)	815 (9oz)	815H (11oz)
YZ 125 05-09		833L (7oz)	833 (9oz)	833H (11oz)
YZ 250 88 (adaptable to 87 and 89)		803XL (8oz)	803L (10oz)	803 (12oz)
YZ 250 90-95 / WR 250 89-98			807 (11oz)	807H (13oz)
YZ 250 96-98		814L (9oz)	814 (11oz)	814H (13oz)
YZ 250 99-01	819XL (7oz)	819L (9oz)	819 (11oz)	819H (13oz)
YZ 250 02		825L (9oz)	825 (11oz)	825H (13oz)
YZ 250 03-09		826L (9oz)	826 (11oz)	826H (13oz)
YZ 250F 03-09 (complete flywheel)		831L (8oz)	831 (8oz)	831H (10oz)
YZ 250F 03-09		829L (7oz)	829 (10oz)	829H (13oz)
YZ 400F 98-99 (complete flywheel)		818LA (8oz)	818A (10oz)	
YZ 400F 98-99 Ty Davis Kit (drill & tap to install)		820L (6oz)	820 (8oz)	820H (10oz)
YZ 426F 00-02 / YZ 250F 01-02 (complete flywheel)		818LA (10oz)	818A (12oz)	
YZ 450F 03-05 (complete flywheel)		831L (5oz)	831 (8oz)	831H (10oz)
YZ 450F 03-05	827XL (7oz)	827L (10oz)	827 (13oz)	827H (16oz)
YZ 450F 06-09 (complete flywheel)		834L (5oz)	834 (9oz)	
WR 450F 04-09 / YZ 450F 04-09 Steel Clutch Basket				216 (10oz)



**Y2 450F
06-09**

Almost every 450 rider is going to benefit, whether you ride MX, woods, flat track, or hillclimb, by adding more flywheel to this beastly 450. Because of a high first gear and high compression this bike is very stall prone. Reduce stalling and increase traction with our complete flywheel. It comes in 5 or 9 ounce sizes. You will need a flywheel puller [E-63].



Y2 250F 03-09

Make your 250F better for slippery conditions and trails. Our complete flywheel comes in sizes from 6 to 10 ounces. You will need our E-1 flywheel puller for installation.

**Y2 450F, WR 450F
HEAVYWEIGHT STEEL
CLUTCH BASKET**

For those that want to add even smoother and more tractable power characteristics than is available after installing our heaviest flywheel weights or if you are looking for more durability. Our heavyweight clutch basket will provide the same power smoothing properties as adding 10 ounces of flywheel weight. The plated steel construction of this basket insures the longest life and best durability of any basket on the market, even for serious clutch abusers.

Y2 450F 03-05

Our complete flywheel assembly comes in sizes ranging from 6 to 10 ounces for every riding style. To install the complete flywheel you will need a flywheel puller [E-1].





YZ 400F, YZ 426F, YZ 250F 01-02

This complete weighted flywheel fits the YZ 400F, YZ 426F, and 01-02 YZ 250F. Two sizes are available to suit different types of riding. Makes the power easier to control, gets more power to the ground, and reduces stalling. Quick and easy to install and you keep the stock flywheel. An E-1 flywheel puller is needed for installation. (For the YZ 400F only: send us your stock flywheel and we will make it into a weighted complete flywheel.)



YZ 400F

Reduce stalling and smooth out the power delivery with the Ty Davis flywheel weight. Requires drilling four holes in your stock flywheel. Kit comes with drill bits and taps. You will need a flywheel puller to do the job.



RECOMMENDATION GUIDE

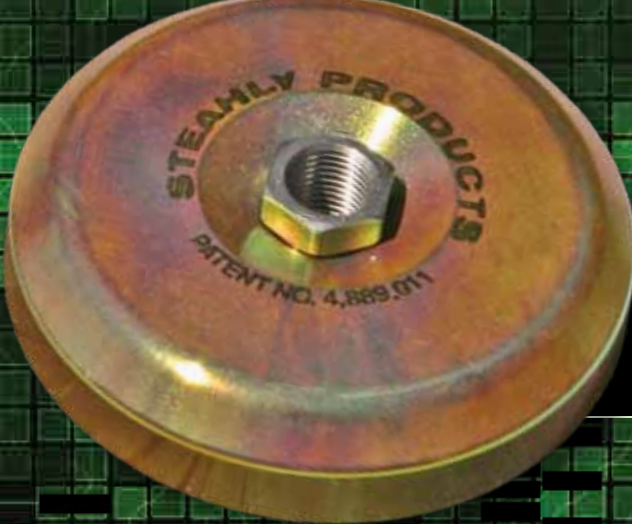
	YZ 450F 06-08	YZ 450F 09-09	WR 450F	YZ 426F	YZ 400F	YZ 250F 01-02	YZ 250F 03-08	YZ 250 02-10	YZ 250 99-01	YZ 125 80-98	YZ 125 96-10	YZ 85 88-98	YZ 85 96-10
Smooth Power Lovers, Novice Trail Riders, Technical Trails	9	16	10	12	10	12	13	13	13	11	12	11	12
Intermediate Woods Racers, Intermediate Trail Riders	9	13	10	12	10	12	10	11	11	9	10	9	10
Aggressive Woods Riders, Desert Riders, Novice & Vet MX Riders	9	10	10	8	10	7	9	9	9	7	8	7	8
MX, SX, Aggressive Desert Riders, Extremely Aggressive Woods Riders	5	7	10	8	8	6	9	7	9				

Flywheel Weight Size (oz.)

These recommendations are based on our opinion. It is just a general guide and personal preference, riding ability, and bike setup should be considered. Call if you would like to discuss this in detail.

EURO APPLICATION CHART

Model	Flywheel Weight Part Number and Size			
GasGas XC, DE, MC 200, 250, 300	404XL (6oz)	404L (8oz)	404 (10oz)	404H (12oz)
Husqvarna CR 250 93-06	401XL (6oz)	401L (8oz)	401 (10oz)	401H (12oz)
Husqvarna WR 250-360 93-08			509 (10oz)	
TM 250-300 MX	402XL (6oz)	402L (8oz)	402 (10oz)	402H (12oz)



XC, DE, MC 200-250-300

Gas Gas makes a great enduro bike but for slippery conditions or super technical terrain adding a little extra flywheel will help tremendously. Our weight easily bolts on in minutes. Use our E-3 engine lockup tool to make it even simpler.

TM 250-300 MX

Smooth out the zippy power of the TM with our bolt on weight and make it easier to ride in the woods.

HUSQVARNA CR 250

Make the Husky easier to control and more manageable. Our weight easily bolts on in minutes. Use our E-3 engine lockup tool to make it even easier.



HUSQVARNA WR 250-360

Husky makes great enduro bikes but for slippery conditions or super technical terrain adding a little extra flywheel will help tremendously. Our weight easily bolts on in minutes. Use our E-3 engine lockup tool to make it even simpler. Used by Glen Kearney on the GNCC circuit.

FLYWHEEL WEIGHT INSTALLATION TOOLS

E-3

E-1

E-63

E-46

E-3 ENGINE LOCKUP TOOL

Makes installation of flywheel weights much quicker and easier. Especially helpful when installing or removing a weight at the track. For most two strokes. Threads into your spark plug hole and acts as a stop for the piston which prevents the engine from turning over. Also works well for working with clutch and counter shaft bolts. Plastic construction will not damage engine.

FLYWHEEL PULLERS

The E-1 puller fits most Japanese two strokes and most KTM two strokes 97 and newer (except 08-10 250/300 XC use puller E-46). The E-1 is needed for installation of many of our YZF complete weighted flywheels. The E-46 puller is needed for installing any of our complete weighted flywheels for the KTM 4-strokes. Use part E-54 when pulling a WR 400-426 flywheel. The E-63 puller is needed for installation of any of our CRF, RMZ, KXF and YZ450 06-09 complete weighted flywheels.

Part	Application
E-1	Puller KTM 2-st,CR,YZ,KX,RM, most YZF
E-63	Puller CRF 150R, 250R, 250X, 450R
E-54	Flywheel Puller WR 400F, WR 426F
E-6500	Flywheel Puller WR 450 04-06 / YFZ 450
E-63	Puller YZ 450F 06-09 / KX 450 06-08
E-63	Puller RMZ-KXF 250 / RMZ 450 06-07
E-46	Flyw puller KTM 4-stk RFS, SXF, XCF, EXC
E-46	Flyw puller KTM XC, XCW 250-300 08-09
E-46	Puller, Husaberg with reverse SEM ignition
E-12	Puller, forward SEM ign KTM,Husa,Canon
E-662	Puller CRF 450X / TRX 450R 06-07
E-73	Puller RMZ 450 08-09 / KX 450 09
E-3	Engine Lock Up Tool

EE ALUMINUM SKID PLATES

Protect your bike's vulnerable underside from rocks and logs with these light weight and durable skid plates. Skid plates come complete with all the necessary mounting hardware.

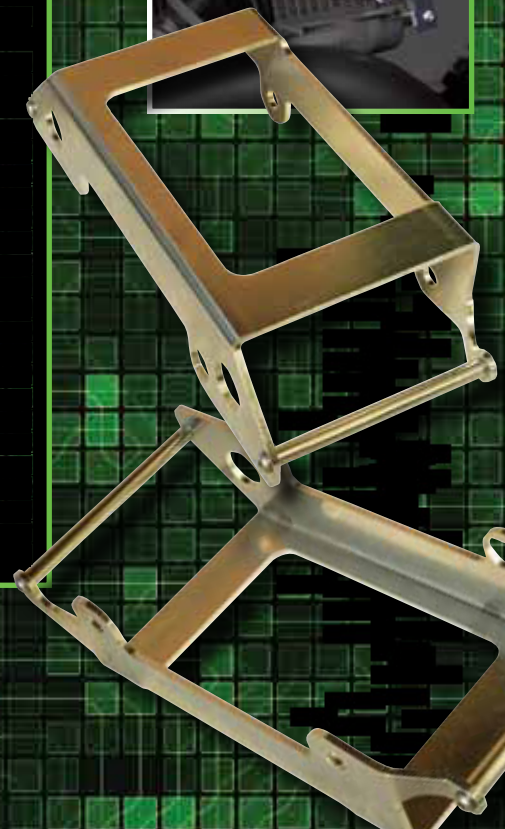
- 24-064 KTM 125/144/150/200 04-09
- 24-066 KTM 400/450/525 04-07 except 07 SX
- 24-067 KTM 250XCF/XCF-W 06-07
- 24-075 KTM 250/300 04-10
- 24-076 KTM 450/530 XCF-W/EXC 08-10
- 24-077 KTM 250 SXF/XCF/XCF-W 08-10
- 24-176 KTM 450-505 SXF 07-10 , XCF 08-10
- 24-270 Husqvarna 2008-10 250/310/450/510 TE/TC/TXC except 2010 250 models
- 24-271 Husqvarna 98-02, 04-10 WR/CR 250/300/360
- 24-272 Husqvarna 2010 TC/TXC/TE 250
- 24-670 CRF250X 2004-09
- 24-671 CRF450X 2005-09
- 24-570 WR250F 2005-10
- 24-571 WR450F 2007-09
- 24-572 YZ 250 2005-2010



RADIATOR BRACES

Strong yet light weight, these aluminum braces protect your radiators from getting twisted and bent without sacrificing airflow.

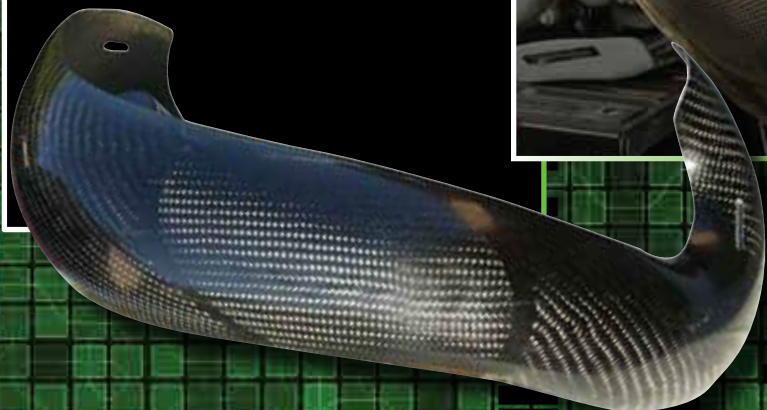
- 11-100 KTM 2-Stroke '98-'05
- 11-200 KTM 400/450/525 '01-'07 except '07 SX
- 11-101 KTM 2-Stroke '06-'07 , '06-'07 KTM 250-F except '07 SX
- 11-108 KTM 125-530 '08-'10
- 11-120 Husaberg '09-10 390/450/570
- 11-131 Husqvarna All models 2000-2010 except 610cc
- 11-150 Yamaha YZ250 '05-'10
- 11-151 Yamaha YZ250F '00-'05, WR250F '05-06
- 11-152 Yamaha YZ450F '03-'05, WR250F '05-'06
- 11-153 Yamaha YZ250F /450F '06
- 11-154 Yamaha YZ250F /450F WR250f/450F '07-'09
- 11-160 Honda CR 250R '04-'08
- 11-161 Honda CRF 250R '04-'09
- 11-162 Honda CRF 250X '04-'09
- 11-163 Honda CRF 450R '04-'08
- 11-164 Honda CRF 450X '04-'09
- 11-165 Honda CRF 450R'09-10
- 11-166 Honda CRF 250R '10
- 11-155 YZF250 2010
- 11-156 YZF450 2010
- 11-170 Suzuki RMZ 450 2008-09
- 11-171 Suzuki RMZ 250 2008-09
- 11-172 Suzuki RMX 450 2010
- 11-173 Suzuki RMZ 450 2010
- 11-174 Suzuki RMZ 250 2010
- 11-180 Kawasaki KLX 450
- 11-181 Kawasaki KXF450 2008-09
- 11-182 Kawasaki KXF 250 2009
- 11-183 Kawasaki KXF 450 2010
- 11-184 Kawasaki KXF 250 2010



CARBON FIBER PIPE GUARDS

Protect your expensive exhaust system from damage with this tough carbon fiber pipe guard. All mounting hardware is included.

- 11-550 KTM 200 XC/XCW 06-09
- 11-700 KTM 250/300
EXC/MXC/XC/XCW/SX 04-10
- 11-745 E3 Pipe



PROTECTION



SILENCER GUARDS

Tired of burning your pants & boots on the KTM Four-Stroke exhaust? Solve that problem with this bolt on aluminum guard. Mounting hardware included.

- 11-060 KTM 250G/400/450/520/525
Except '03 450SX 00-03
- 11-061 KTM Fourstroke 04-07
except 07 SX models
- 11-062 SXF 07-09, XCF/XCF-W 08-10

KTM ELECTRONIC ODOMETER GUARD

Protect your KTM odometer from crashes and debris using this billet aluminum guard. It features a built in bracket for the headlight switch and it allows you to use the forward handlebar mount on the triple clamp.

- 16-031 KTM EXC 05-06, XCW 05-10



Enduro Engineering

PROTECTION

CLUTCH CYLINDER PROTECTORS

Saves your slave cylinder and engine case if you throw a chain or fall on a rock. Offers great peace of mind.

- 13-090 KTM 125-200 99-07 except 07 SX
- 13-091 KTM 250/300/380 99-05
- 13-092 KTM 400/450/520/525 00-07 Except '07 EXC/SXF Models
- 13-093 KTM 250-300 XC, XCW 06-07/SX 06
- 13-094 KTM 250 XCF/XCFW 07 , 450-525 EXC 07 (w/14T countershaft)
- 13-095 KTM 125/144/200 08-10
- 13-096 KTM 450/505 SXF 07-10 /XCF 08-10
- 13-097 KTM 250-300 08-10, 450-530 XCR-W/EXC 08-10
- 13-098 KTM 250 XCF, XCF-W, SXF 08-10
- 13-099 Husaberg 390/450/570 09-10



ULTRA DISC GUARD WITH COMPLETE CARRIER

Protect your expensive rear brake rotor with this disc guard. Replaces the entire brake carrier for superior strength and features a replaceable fin.

- 13-030 Husqvarna 4-stroke models(except 610cc) 2004-2010 also fits WR 125 2009-2010
- 13-031 Husqvarna CR/WR 125/250/300 2000-08 Husqvarna WR 250/300 2009-2010
- 13-044 Rear Disc guard Wrap Around 1996-2003
- 13-045 All KTM except LC4 04-10, 200/250/450SX 03, Husaberg 09-10
- 13-052 Yamaha 125/250/450 YZ/YZF/WR 03-04
- 13-053 Yamaha 125/250/450 YZ/YZF/WR 05
- 13-054 Yamaha 125/250/450 YZ/YZF/WR 06-10 (Except 09-10 250/450YZF)
- 13-055 Yamaha 250/450 YZF 09-10
- 13-061 Honda 125/250/450 CR/CRF/CRFX 03-10
- 13-071 RM-Z 250 03-06, KXF 250F 03-10, KLX 450 08-10
- 13-072 Suzuki RMZ 450 07, RMZ 250 07-10
- 13-044 KTM 89-03 (except '03 SX & LC4 Models), Gas Gas 05-06 .
- 13-051 Replacement fin-all disc guards

AXLE PULLS

Make wheel maintenance a breeze with this timesaver. Made of billet aluminum, this trick piece not only looks cool but is extremely handy when it comes time to change a tire.

FRONT

- 23-050** Yamaha YZ125, YZ250, WR/YZF 450 03-10
Honda CR/CRF 125, 250, 450 01-10
CRF 250X, CRF 450X 04-06
Suzuki RM/RM-Z 125, 250, 450 01-10
Kawasaki KX/KXF 125/250/450 03-10
- 23-055** All KTM 03-10, 09-10 Husaberg (48mm forks)

REAR

- 23-051** Yamaha YZ/WR/YZF 125, 250, 450 03-10
Suzuki RM 125, RM 250 03-10
- 23-056** KTM All 00-10, Husaberg 09-10
- 23-061** Honda CR/CRF 125, 250, 450 03-10
CRF 250X, CRF 450X 04-10
Suzuki RMZ 250/450 04-10
Kawasaki KX/KXF 125, 250, 450 03-10



HANDLEBAR RISER MOUNTS

The Enduro Engineering bar mount riser kit replaces your stock mounts, moving your handlebars 5/8" forward and 5/8" higher than stock.

- 23-601** CR 125/250/500 2004-2010
CRF/CRFX 250/450 2000-07
KX 125/250/500 2002-2007
KDX 200/220 1995-2005
KXF250/450 2004-2010
KLX 450 2008-2010
Bar Size 1 1/8"
- 23-602** CR 125/250/500 2000-07
CRF/CRFX 250/450 2004-2010
2002-2007 KX 125/250/500
1995-2005 KDX 200/220
2004-2010 KXF 250/450
2008-2010 KLX 450
Bar Size 7/8"



HANDLE BAR RISER KITS

The Enduro Engineering bar riser kit lets you simply raise your handlebars on your 00-10 KTM from 5-30mm depending on what interlocking 6061 aluminum CNC machined pieces you choose. Fits KTM EXC/MXC/SX/XC/XCW, 09-10 Husaberg. The Husqvarna version raises the bars either 5mm or 8mm.

- 23-002** KTM Husaberg Bar Risers 5-20mm
23-005 Husqvarna All models 2004-2010 5mm / 8mm



LICENSE PLATE HOLDER

This holder is made of tough plastic and comes with all the necessary hardware for mounting. The holes are pre drilled to line up perfectly with 04-'09 KTM EXC rear fenders, all Enduro Engineering Off-Road Lighting Kits, and they will also adapt to almost any off-road rear fender.

- 22-700** License Plate holder



HAND GUARDS



MOTO ROOST DEFLECTOR

A Dirt Bike Magazine Product of the Year! The New EE Moto Roost Deflector has been built for durability and functionality. The mounting hardware consists of a billet T6061 aluminum bracket supporting an open ended Polypropylene rail that will give the support you need yet still flex back under an impact. This system will support the popular EE Roost Deflectors that are available in a variety of colors. A spring loaded aluminum hinge enables the Roost Deflector to pivot forward along with your folding levers in the event of a fall, but will hold in place while blocking debris from other machines. Moto Roost Deflector (MRD) kits come with mounting kit and Evolution Roost Deflector cover.

- 52-120 MRD Kit White
- 52-121 MRD Kit Clear
- 52-123 MRD Kit Blue
- 52-124 MRD Kit Black
- 52-125 MRD Kit Orange
- 52-126 MRD Kit Red
- 52-127 MRD Kit Black/Orange
- 52-128 MRD Kit Yellow
- 52-129 MRD Kit Green
- 53-100 MRD Mount Kit



EVOLUTION HAND GUARD COVERS

Flexible plastic protects hands from roost, brush, and wind. Its unique mounting design requires no drilling. Made of durable Polypropylene, this injection molded deflector is the perfect mate to our aluminum Debris Deflector. Comes complete with all the necessary mounting hardware and are sold in pairs. Installation is quick and easy with nylon mounting straps with molded in nylock nuts. No drilling or tapping needed.

Evolution Roost Covers

Part	Color
51-120	white
51-121	clear
51-123	Yamaha blue
51-124	black
51-125	KTM orange
51-126	Honda Red
51-127	black/orange
51-128	yellow
51-129	green
51-020	White (screw on)
51-024	Black (screw on)
51-025	KTM orange (screw on)



Screw On Cover

EVOLUTION DEBRIS DEFLECTORS

Made of top quality 6061-T6 aluminum these guards offer a wide radius bend for more hand & lever room, they are contoured to follow the natural bend of the handlebar. All hardware is included for hassle free installation; zinc plated for durability. Kits come with Debris Deflectors and attach with our new "U" shaped Evolution Clamps for added cable/hose clearance.

- 50-5132S Silver Std 7/8"
- 50-5132B Black Std 7/8"
- 50-5135S Silver Pro Taper
- 50-5135B Black Pro Taper
- 50-5136S Silver Magura
- 50-5136B Black Magura
- 50-5137S Silver Renthal/Neken
- 50-5137B Black Renthal/Neken
- 50-5125S Complete Debris Deflectors
w/Triple Clamp Mount Silver
- 50-6006 Black Renthal Twinwall

EVOLUTION CLAMPS

Design allows easy hand guard mounting while avoiding cables and brake lines. Can be used with most brands of wrap around hand guards.

- 50-132S 7/8" Silver
- 50-132B 7/8" Black
- 50-135S Pro Taper Silver
- 50-135B Pro Taper Black
- 50-136S Magura Silver
- 50-136B Magura Black
- 50-137S Renthal/Neken Silver
- 50-137B Renthal/Neken Silver



DEBRIS DEFLECTORS

Heavy duty wrap around design made of high grade aluminum with polished finish. Mounting hardware includes metal taper-lock inserts instead of rubber. All fasteners use same wrench.

- 50-001 Silver 7/8" Bars
- 50-004 Black 7/8" Bars
- 50-008 Mini-Guards Silver 7/8"
- 50-1001 Silver Pro-Taper
- 50-1004bk Black Pro-Taper
- 50-3001 Silver Magura
- 50-3004bk Black Magura
- 50-4001 Silver Renthal Fat Bar
- 50-4004bk Black Renthal Fat Bar

DEBRIS DEFLECTORS MOUNTING KITS

(specify color, black or silver, when ordering)

- 10-032 Standard 7/8 handlebar
- 50-035 Protaper handlebar
- 50-036 Magura/Applied handlebar
- 50-037 Renthal Fat Bar/
KTM Neken Handlebar



HAND GUARD PARTS



A



B



B



D

30

A. TAPERLOCK INSERTS

Securely fastens Debris Deflectors and most brands of Hand Guards to the handlebar. More solid mounting than rubber inserts.

10-033 Taperlock Inserts

B. HANDLEBAR END INSERTS

Ideal for when you would like to remove your Debris Deflectors or to protect grips from tearing when not using wrap around hand guards. Handlebar End Inserts are a great combo when switching from Debris Deflectors to Moto Roost Deflectors.

54-100 Handlebar End Inserts

C. DEBRIS DEFLECTOR FASTENER SET

Replace worn out bolts or keep spares in the tool box.

50-034 Fastener Set

D. TRIPLE CLAMP DEBRIS DEFLECTOR MOUNT SET

The NEW Enduro Engineering triple clamp Debris Deflector mount, will securely fasten your EE Debris deflector on most top triple clamps with side access pinch bolts. [Not for stock KTM triple clamps]

50-025 Triple Clamp Mount Clamp Set



KTM TOOLS



E



C



F



G



H



7.0

E. POWER VALVE ADJUSTER TOOL

Fine tune your 05-10 250 or 300 powervalue with our billet powervalue adjustment tool.

22-2002 Power Valve Adjuster

F. KTM FORK CAP REMOVAL TOOL

Make fork cap removal a snap on the 48mm WP SX forks with this handy socket. Works with a 1/2 inch socket wrench. Works on WP fork caps with preload adjusters. KTM 02-06 SX 06-07 XC 08-10 XC-W, 09-10 Husaberg

22-1001 KTM For Cap Removal Tool

G. HEIM JOINT TOOL

by Motion Pro Removes and replaces KTM Heim joints. Aligns Heim joint for easy installation. Built in stop correctly centers Heim joint in swing arm. Aligns and installs Heim joint seals. Anodized aluminum construction reduces the possibility of damaging your swing arm. Handle includes retention o-ring to hold Heim joint adaptors and Heim joint bearing in place. Ergonomic handle for a comfortable fit. Made from billet 6061-T6 and anodized Motion Pro blue. Laser engraved Motion Pro logo. Original Motion Pro design.

22-098 Heim Joint Tool

H. KTM SPOKE WRENCH

Hard anodized handle with a replaceable tip. This is a must for every KTM riders tool box. Works on 90-10 125-640 KTMs and 09-10 Husaberg spokes.

22-4002 KTM Spoke Wrench

I. GRIP HEATERS

Keep your hands loose and warm in the cold with these easy to install grip heaters. Includes all the hardware and a hi-low-off switch. Works with any bike with a lighting coil. Made famous at Dirt Rider Magazine's 24 Hour Test!

15-054 Grip Heaters

J. SCORE CARD HOLDERS

Made of weather proof vinyl, includes a strip to stay securely fastened. Easily mounts to any fender.

12-039 Black

K. ROUTE SHEET HOLDER

Features a snap on top, water tight seal, and crack resistant plastic.

14-052 Black

14-049 Replacement Top

L. UNIVERSAL MOUNTING BRACKET

Now mount your accessories with ease. This bracket kit works with steering stabilizers, tapered bars or both. Great for GPS, roll charts or a computer.

16-035 Mounting Bracket



EXHAUST



E3 EXHAUST FOR KTM 2-STROKES

The secret is out! The E3 exhaust system is an easy way to get the most from your KTM. This system adds snap off the bottom, and smooths out the power band without sacrificing top end performance. It was developed from the ground up for off road use. The sharp black finish gives it a "Works" look and at the same time adds durability. It also features a different shape so it won't rub on your leg. The pipe is also interchangeable with the stock silencer.

40-045 Fits '04-'010 KTM 250/300
EXC/MXC/XC/XC-W/SX.

E3 SILENCER FOR KTM 2-STROKES

The EE performance silencer features a two piece billet aluminum end cap that houses a removable screen type spark arrester. Install the screen to be forest legal or remove the screen for closed course competition. It is also lighter saving almost 2.5lbs over the stock silencer. With the help of Race Tools cartridge type muffler packing the silencer is rated to be at or below the 94db requirement. The E3 silencer is interchangeable with the stock pipe.

40-145 Fits KTM Two-strokes
1998-2010 200/250/300
40-147 Replacement Spark Arrester End Cap
and Screen Kit for E3 Silencer.
40-146 Replacement screen for spark arrester

E3 SILENCER PACKING

Restore lost power and keep the decibels in check when you repack your silencer with a cartridge by Bristol Core. This drop & load solution eliminates the hassle and mess of the wrapping and taping of conventional muffler packing. In addition, the pre-wrapped cartridge ensures even coverage in the entire silencer for maximum performance.

SS-D1-0045 E3 Silencer Packing
SS-D1-0017 Silencer Pack OEM KTM
2006-2010 200-300 XC-W
SS-D1-0016 Silencer Pack OEM KTM
1998-2005 200-380 EXC
SS-D1-0018 Silencer Pack OEM KTM
2006-2010 200-300cc XC
SS-E1-0115 Silencer Pack OEM
2000-2010 RFS EXC/MXC/XC-R-W

SEATS



EE COMFORT COMPLETE SEATS

Our complete seats are manufactured right here in the USA. They offer all day riding comfort with a redesigned shape that features a wider top surface and larger radius edges. This combined with our use of injected molded memory foam, will give you the most support of any seat on the market. Seats are available in standard height and tall versions.

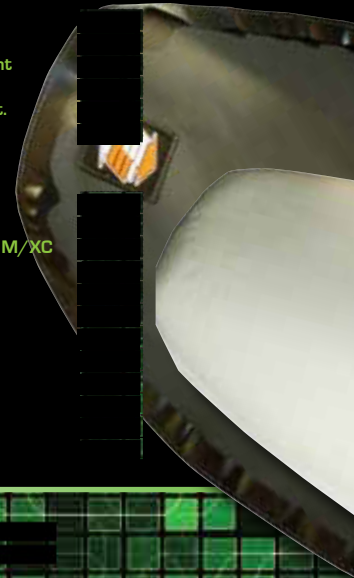
- 75-100 KTM 125-525cc XC/XC-W/EXC/MXC 04-07, SX 03-06
Standard Height: Soft
- 75-200 KTM 125-525cc XC/XC-W/EXC/MXC 04-07, SX 03-06
Tall Soft
- 75-300 KTM 125-525cc XC/XC-W/EXC/MXC 04-07, SX 03-06
Std Height: Super Soft
- 75-400 KTM 125-525cc XC/XC-W/EXC/MXC 04-07, SX 03-06
Tall Firm
- 75-108 KTM SX/SXF 07, KTM All Models 08-10
Standard Replacement
- 75-208 KTM SX/SXF 07, KTM All Models 08-10
Tall Complete Seat
- 75-308 KTM SX/SXF 07, KTM All Models 08-10
Complete Soft Seat
- 75-408 KTM SX/SXF 07, KTM All Models 08-10
Tall Firm Complete Seat

REPLACEMENT COVERS

- 75-110 KTM 04-07 (not 07 SX, SXF) standard height
- 75-210 KTM 04-07 (not 07 SX, SXF) tall
- 75-118 KTM 08-09 125-530 / SX, SXF 07 standard height
- 75-218 KTM 08-09 125-530 / SX, SXF 07 tall
- 7504-21-21 Universal/trim to fit most bikes. Standard height.
- 7514-21-21 Tall cover Universal/trim to fit most all models

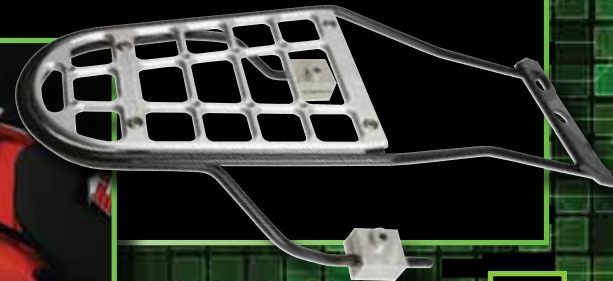
REPLACEMENT SEAT FOAMS

- 7501S Std soft seat foam 1998-2002 E/XC-M/XC
- 7531S Std soft seat foam 2002-03 SX 2003 EXC
- 7502FS Tall soft seat foam 1998-2002 E/XC 1998-2003 M/XC
- 7532S Tall soft seat foam 2002-03 SX 2003 EXC
- 7560S Std Seat Foam Honda CRFX250 2004-09
- 7560T Tall Seat Foam Honda CRFX250 2004-09
- 7561S Std Seat Foam Honda CRFX450 2005-09
- 7561T Tall Seat Foam Honda CRFX450 2005-09
- 7550S Std Seat Foam 2007-09 WR250/450F
- 7550T Tall Seat Foam 2007-09 WR250/450F
- 7551S Std Seat Foam 2002-2010 YZ125/250
- 7551T Tall Seat Foam 2002-2010 YZ125/250



REAR FENDER RACK

A must have for the dual sport and long distance off-road rider. This billet rack set in a stainless steel wire frame is strong and light, the plated finish will keep yours looking great for years. Each rack is supplied with complete instructions and all the necessary stainless steel hardware for easy installation. Fits 2008-09 KTM 125-530cc models.
22-800



LONGER THROTTLE CABLES

Made by Motion Pro. These high quality cables are 3 inches longer than stock. The extra length allows you to route the cables around the front of the triple clamp out of the way of your computer, steering dampener, etc.

- 15-080 KTM All 2 Strokes 00-10
- 15-081 KTM 250G/400/520 00-02
- 15-082 KTM 250F/400/450/525/530 03-10

CLUTCH AND BRAKE LINES

This rugged braided stainless steel hose will ensure solid clutch pressure every time. Also features an elbow fitting at the master cylinder to route around handguards. All necessary hardware is included.

Clutch Lines

- 15-070 KTM 125/200 98-10
- 15-071 KTM 250/300/380 99-05
- 15-072 KTM 400-530 00-10, 250F/250/300 06-09,
GasGas 200-300 03-09

Front Brake Hose

- 15-095 KTM EXC/MXC/XCW 00-10, Husaberg 09-10
- 15-096 KTM XC/SX 00-10

Rear Brake Hose

- 15-090 KTM 90-03 all except LC4 & 65SX
- 15-091 KTM EXC/MXC/XC/XCW/SX 04-10,
Husaberg 09-10

ODO CABLE

Replace your broken odo cable with this inexpensive alternative.

- 15-060 KTM 98-02

SPARE PARTS



THROTTLE TUBES

We offer throttle tubes that feature a pop-out end cap to allow easy installation of handguards.

- 15-084 KTM 2 Stroke 96-10
- 15-085 KTM 4 Stroke 00-10, Husaberg 09-10



REPLACEMENT FASTENER KITS

Tired of digging around in the tool box trying to find a bolt that "might" fit? Look no further. Enduro Engineering now carries a 50 piece fastener replacement kit for your KTM or 54 piece kit for your Jap bike. Great to keep in the tool box or use to dress your ride up.

- 18-300 KTM/Husaberg Replacement Fastener Kit
- 18-400 Jap Models

SPROCKET FASTENERS

Designed to fit all Japanese and most European dirt bikes, contains six Grade 10 steel sprocket bolts and six fuji-style metal locking nuts.

- 18-500

Enduro Engineering

LOWER HEIM JOINT KIT

With KTM's linkless rear suspension the main point of wear in the swing-arm is the lower Heim joint that connects the shock to the swingarm. This is a common wear item. Our kit comes complete with bushing, seals and spacers. See the installation tool on page 31.

16-098 KTM 98-10, Husaberg 09-10

Lower Shock Heim Joint Replacement Kit

SPACER, BEARING, & SEALS

From Enduro Engineering we offer a great selection of replacement spacers, bearings and seals. The spacers are hard anodized for longer wear. These bearings and seals are an economical replacement to the expensive stock ones.

(1) includes spacers, (2) includes bearings, (3) includes seals

16-050 KTM 90-10, Husaberg 09-10 Rear (1)

16-060 KTM 90-10, Husaberg 09-10 Rear Kit (1), (2), (3)

16-061 KTM 90-10, Husaberg 09-10

Upgrade to Larger Bearings Rear Kit (1), (2), (3)

16-083 KTM 03-10, Hberg 09-10 26mm Front Wheel Spacer (1)

16-085 KTM 00-02 Front Spacer (Small) (1)

16-090 KTM 00-02 Front E/XC-M/XC Models Kit (1), (2), (3)

16-091 KTM 00-02 Front SX Models Kit (1), (2), (3)

16-092 KTM 03-10, Husaberg 09-10 Front (1), (2), (3)

16-052 Husqvarna 01-10 all models Rear Wheel Spacers (1)

16-062 Husqvarna 01-10 all models Rear Kit (1), (2), (3)

16-084 Husqvarna 01-10 all models Front Wheel Spacer (1)

16-093 Husqvarna 01-10 all models Front Kit (1), (2), (3)

16-650 CR/CRF/CRFX 00-10 Rear Wheel Spacers (1)

16-660 CR/CRF/CRFX 00-10 Rear Wheel Kit (1), (2), (3)

16-684 CRF/CR 02-10 Front Wheel Spacer Kit (1)

16-692 CRF-X 04-09 Front Wheel Kit (1), (2), (3)

16-693 CR/CRF 02-10 Front Wheel Kit (1), (2), (3)

22-1002 Rear Wheel Bearing Collar removal/
Seal Driver Tool 00-10

16-550 Yamaha YZ/YZF/WR 02-10 Rear Wheel Spacer (1)

16-560 Yamaha YZ/YZF/WR 02-10 Rear Kit (1), (2), (3)

16-583 Yamaha WR 05-10 Front Wheel Spacers (1)

16-584 Yamaha YZ/YZF 08-10 Front Wheel Spacers (1)

16-592 Yamaha WR 05-10 Front Kit (1), (2), (3)

16-593 Yamaha YZ/YZF 08-10 Front Kit (1), (2), (3)



ODOMETER ELIMINATOR

Enduro Engineering offers a great selection of replacement spacers, bearings and seals. The spacers are hard anodized for longer wear. Front Wheel.

16-080 17mm Odometer Eliminator 93-99 KTM,

95-99 Husky, 93-00 XR 600, 96-00 XR 400

16-082 20mm Odometer Eliminator

00-02 KTM E/XC, 00-02 Husaberg

16-683 Speedo Drive Eliminator Kit CRF-X 04-09

ELECTRONIC SENSOR WIRE AND MAGNET

Running an electronic odo/speedo? This magnet & sensor wire are great to keep as spares or outfit your new bike. Works with enduro timing equipment as well. * [Note: may have to change connectors to fit certain equipment]

16-040 Magnet

16-041 Sensor Wire

16-043 Stock KTM Odo sensor wire 03-04



TM DESIGNWORKS FACTORY EDITION 2 CHAIN GUIDE

A complete chain guide assembly made of special long lasting plastic. Machined, not molded to fit each bike. Strong enough for years of abuse on rocks and ruts. Used by every factory off-road race team. Comes with an exclusive 1-year warranty against breakage. Replaceable wear pad.



TM DESIGNWORKS FACTORY EDITION CHAIN GUIDE

A complete solid body chain guide assembly made of special long lasting plastic. Machined, not molded, to fit each bike. Strong enough for years of abuse on rocks and ruts. Used by every factory off-road race team.



FACTORY EDITION 2 CHAIN GUIDES

Part	Application
D-150	CRF 150R (red or black)
D-CR4	07-10 CRF 250R / 450R / 250X, 08-10 CRF 450X
D-KT2	KTM XC, XCW, XCF, EXC, 08-09 / SX 07-09
	Husaberg FE 450-570 09 (orange, black, hus blue)
D-KX3	KX 450 09 (green or black)
D-YS2	YZF.WR 250F-450F 07-09 / YZ 125-250 08-9 (bl or bk)

FACTORY EDITION CHAIN GUIDES

Part	Application
D-CR3	CRF 250R-X 07-09 / CRF 450R 07-09 (red)
D-CRM	CR-CRF 93-04 / CR 250X 04-05 (red or black)
D-CR2	CR-CRF 05-06 / CRF 250X 05 / CRF 450X (rd or bk)
D-KTM	KTM 80-525 96-06 / XC, XCW, EXC 07 (orange or bk)
D-KX2	KX 125-250 03-07 / KXF 250-450 03-08 (grn or bk)
D-KXM	KX 125-250 97-02 (green or black)
D-SMX	RM 125-250 99-08 / RMZ 450 05-09
	RMZ 250 07-09 / DRZ-KLX 400 (yellow, blue or bk)
D-YZ2	YZF.WR 250F-450F 07-09 / YZ 125-250 08-9 (bl or bk)
D-YSM	YZF.WR 250F-450 98-06 / YZ 125-250 97-07 (bl or bk)

TM DESIGNWORKS FRONT CHAIN SLIDERS

A. BAJA RALLY ENDURANCE SLIDER

The ultimate for racing Baja, Rally, GNCC or World Enduro type events. Machined, not molded to fit each bike. 8 times the wear life of a stock slider. Noise dampening pads reduce chain slap noise. Used by every factor off-road race team. Includes hardware. Available in OEM color match or black.

B. FACTORY EDITION SLIDER

These compression molded HD sliders with noise dampening pads are the quietest on the market. Oil impregnated for low surface drag. Includes hardware. Available in OEM color match or black.

C. DIRT CROSS SLIDER

Improved design over the stock part with more durability in hi-wear spots. Uses stock hardware. Available in OEM color match or black.

DIRT CROSS SLIDERS

Part (colors)	Application
D-H10 (BK, RD)	Honda CR, CRF, CRF-X 00-10
D-H15 (BK, RD)	09-10 CRF 450R, 10 CRF 250R
D-K21 (BK)	97-08 KX 125/250
D-K25 (BK)	04-05 KX250F, 04-06 RM-Z 250
D-004 (BK, OR, BU)	KTM SX 07-10, KTM all models 08-10, Husaberg FE/XC 09-10
D-DOSKTM (BK)	99-07 EXC/ MXC/ XC/ XC-W, 99-06 SX
D-S20 (BK, YL, RD)	RM 125/250 01-08, RMZ 250 07-09, RMZ 450 05-06 and 08-10
D-Y30 (BK, BU)	02-08 All YZ/ YZF/ WRF, 09-10 YZ/ WRF

FACTORY EDITION SLIDERS

Part (colors)	Application
D-455 (BK, RD)	00-08 CR, CRF, CRF-X All Full Size Models 09 CRF250R, 09-10 CRF-X 250/450
D-457 (BK, RD)	09-10 CRF450R, 2010 CRF25R
D-002 (BK, OR)	KTM All 99-04, 05 EXC/ MXC
D-003 (BK, OR)	KTM SX 05-06, XC/ XCW/ EXC 06-07
D-K004 (BK, OR, BU)	KTM SX 07-10, All models 08-10, Husaberg 09-10
D-SCSMX (BK, YL, RD)	RM 125/250 01-08, RMZ 250 07-09 RMZ 450 05-06 and 08-10

BAJA RALLY SLIDERS

Part (colors)	Application
D-451	CR 125/250 00-04, CRF 250R/450R 02-04, CRF 250X 04-05
D-456	CR 125/250 05-07, CRF 250R 05-09, CRF450R 05-08, CRF 250X 06-10, CRF 450X 05-10 KXF 250 06-10, KXF 450 06-10, KLX 450 08-10
D-KCPKXIM (BK, GRN)	YZ, YZF, WRF 97-01
D-M41 (BU)	YZ, YZF, WRF 02-04
D-M42 (BK, BU)	YZ, YZF, WRF 02-04
D-M45 (BK, BU)	YZ 125/250 05-10, YZF 05-08, WRF 05-10





TM DESIGNWORKS DIRT CROSS CHAIN GUIDE

This plastic chain guide shell replaces the stock aluminum outer shell.

Available in black or color match.

RCG-SCR CR/CRF 125-450R, 450X 05-10, CRF 250X 06-10

RCG-SKT KTM 85-525 97-06, XC/XC-W 07

RCG-SYZ YZ 125-250 97-10, YZF/WRF 98-06

RCG-SRM SUZUKI RM/RM-Z/DRZ 98-10

RCG-SKX KAWASAKI KX/KXF/KLX 06-10

RCG-100 HONDA Shell with inner rub block 05-07 CR, 05-06 CRF

RCG-101 HONDA Shell with inner rub block 07-10 CRF, 08-10 450X

RCG-104 KTM Shell with inner rub block

RCG-105 Kawasaki shell with inner rub block



TM DESIGNWORKS CHAIN SLIDE-N-GUIDE KITS

The Factory Edition Chain Slide-N-Guide package is the ultimate in visual appeal and performance. Each kit consists of a 2 stage chain noise reducing Super Protector, Powerlip lower roller, and patented indestructible rear chain guide. All parts are molded with TM Designworks low drag and long wearing material.

KCP-K09 KXF 250-450 09-10

KCP-KXK KXF 250-450 06-08, KLX 450 08-10

HCP-4SK CR/CRF 125-450 00-04, CRF 250X 04-05

HCP-5SK CRF 450R 05-06, CRF 450X 05-07

HCP-6SK CRF 250R/X 07-09

HCP-7SK CRF 450R 07-08, CRF 450X 08-10

HCP-8SK CR 125-250 05-07, CRF 250R 05-06, CRF 250X 06

SCP-6SK RM 125-250 01-08, RMZ450 05-06 & 08-10,

RMZ 250 07-09, RMX 450 10

KTM-215 KTM SX 07-10, KTM XC/XC-W 08-10, Husaberg 09-10

KTM-200 KTM 99-04, SX 05

KTM-210 KTM MXC/EXC 05, XC/XC-W/SX 06, XC/XC-W 07

YCP-77K YZF 07-08, WRF 07-09, YZ 125-250 08-09

YCP-K50 YZ 125-250 05-07, YZ/WR 250-450 05-06

YCP-YZK YZ/WR 125-450 97-01

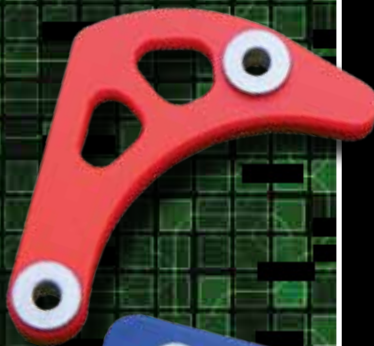
YCP-K23 YZ/WR 125-450 02-04



TM DESIGNWORKS POWERLIP ROLLERS

TM Designworks race rollers are cast from a custom plastic formula for low friction and long life. Every one of our rollers is equipped with 9002 ISO certified sealed racing bearings and hi temperature grease. Upper and lower roller kits available at a discount, call for applications.

- PLR-212** CR 250R 90-07 Upper mount
 CR 125R 90-04 Lower mount
 CR 250R 90-01 Lower mount
 CRF 250 X 04-05 Lower mount
 CR 500R 87-01 Lower mount
 RMZ 450 05-10 Lower mount
 RMZ 250 04-10 Lower mount
 YZ/WR 125-450F 90-10 Upper
- PLR-215** KX 80-500 90-10 2 stroke.
 KXF 250 05-10 Lower/Upper mount
 KXF 450 06-10 Lower/Upper mount
 KLX 450 08-10 Lower/Upper mount
 KDX models all
 RMZ 250 04-06 Lower/Upper mount
- PLR-550** CR/CRF 125-450 02-04 Lower
 CRF 250X 04-05 Lower
 YZ/WR 125-450 92-10 Lower
 RM 125-250 95-08 L/U mount
 RMZ 250 07-10 Upper Mount
 RMZ 450 05-10 Upper Mount
 RMX 450 09-10 Upper Mount
 DRZ/KLX 400 98-10 Lower Mount
- PLR-560** CRF 450R/X 05-10 Lower
 CRF 250-450R/X 05-10 Upper
- PLR-570** CRF 250R 05-09
 CRF 250X 06-10
 CR 125/250 05-07



TM DESIGNWORKS CASE SAVER

This ultra strong impact absorbing case saver is made from TM Designworks proprietary plastic formula to percent case damage in the event of chain derail or an object feeding through the sprocket. Available in black or brand color match.

- HCS-150** CRF 150
HCS-250 CRF250R/X 04-09
HCS-X45 CRF 450 X
HCS-450 CRF450R 02-07
KCS-450 KXF 450 06-10
KCS-250 KXF 250 05-08
KCS-255 KXF 250 09-10
KCS-455 KLX 450
YCS-450 YZF-WRF 450 03-05

KTM UPPER AND LOWER FRAME WEAR PADS

These replace the frame pads on late model KTMs but can also be used in place of the rollers on earlier models. Special long wearing plastic formula. Available in black or color match.

- KTM-LCG** KTM Lower Frame Pad 00-07 (not 07 SX)
LCG-KT2 KTM Lower Frame Pad 08-10 also 07 SX
KTM-UPF KTM Upper Frame Pad 97-10



TM DESIGNWORKS REAR BRAKE CALIPER PROTECTOR

Made from TM Designworks impact resistant plastic. Available in black of brand color match.

RBG-KAW	KXF, KLX 450 06-10
RBG-YAM	YZ, WR 06-09
RBG-HON	CR, CR-F 05-09
RBG-SUZ	RMZ 450 05-10
	RMZ 250 07-10
	RMX 450 2010



TM DESIGNWORKS INDESTRUCTIBLE REAR DISC PROTECTOR

Protect your rear brake disc from damaging impact with this OEM color match or black machined plastic protector. Made from the same material as the T.M. Designworks indestructible rear chain guide. The special plastic formula is designed to allow the part to flex rather than bend like aluminum on impact.

REAR DISC PROTECTORS

Part (colors)	Application
RDP-HON (BK, RD)	Honda CR, CRF, CRF-X 00-10
RDP-H02 (BK, RD)	87-01 CR 125/250/500
RDP-KAW (BK, GRN)	05-09 KXF 250/450
RDP-SUZ (BK, YL)	RM 125/250 04-08, RMZ 250 07-10,
	RMZ 450 05-09, RMX 450 2010
RDP-YAM (BK, BU)	Yamaha YZ / YZ-F / WRF 04-10



TM DESIGNWORKS CASE SAVER AND SPROCKET COVER

This plastic FIM legal sprocket cover integrates an ultra strong impact absorbing case saver. Large size cutouts save weight and prevent mud from packing around the chain. Available in black or brand color match.

HCC-150	CRF 150
HCC-250	CRF250R/X 04-09
KCC-450	KXF 450 06-10
KCC-250	KXF 250 09-10
SCC-455	RM-Z 450 08-10
YCC-250	YZ250 00-10
YCC-Y2F	YZ250F 02-09
YCC-450	YZF-WRF 450 05-09





FREDETTE CHAIN GUIDES

Much stronger than stock chain guides for withstanding rocks and ruts. Complete assembly comes with reinforced thick aluminum side plates and replaceable plastic rubbing blocks. Wide enough for o-ring chains.

FREDETTE CHAIN GUIDES

Part	Application
D-10	KDX 200 84-88, KX 125-250-500 84-87 (blue)
D-13	KX 125-250 88-96, KX 500 88-04 KDX 89-06, KLX 94-07, RM 250 89-91 RMX 89-97, DR 250-350 90-92 (blue)
D-19	KX 125-250 97-07 / XKF 250 04-08 (silver) KX 450 06-08 / KLX 450
D-11	YZ 125-500 89-92, WR 90-93 (blue)
D-14	YZ 125,250,500 93-96, WR 94-97 (blue)
D-15	YZ 125, 250 97-07 / 400, 426, 450 98-06 (blue)
D-12	CR 125, 250, 450F, 500 90-05 / TM (red)
D-18	CR 84-85 / XR250 86-02 / XRL250 91-95 / XR400 / XR600, XRL650 85-87, 91-05
D-016	XR 600 88-90 (silver)
D-16	KTM 125-200 98-06 / 250 to 525 94-06 (silver)
D-15	RM 125,250,450 99-06 / DRZ400 99-04 (blue)
D-19	RMZ 250 04-06 (silver)
D-2	Rubbing block for D-12,16,18,19
D-3	Rubbing block for D-10,11,13
D-4	Rubbing block for D-14,15



IRONMAN SPROCKETS

The toughest sprockets made. Only 4 ounces heavier than an aluminum sprocket but 5 times stronger. Laser cut heat treated steel. 1 year guarantee.

D-1M Rear Sprocket Iron Man Steel

D-1M2 Front Sprocket Iron Man

X-RING CHAINS

Made by RK. They last much longer and resist mud and sand much better than standard chains. Less wear and less maintenance.

D-RK520 RK 520 X-Ring Chain 118 links





YZ 250

ALUMINUM SKID PLATE

Made in the USA by Ricochet. Highest quality .150" (4mm) thickness aircraft grade aluminum construction makes it the strongest skid plate on the market. Side extensions protect side covers and water pump. Steel mounting brackets. Clear anodized finish. See Enduro Engineering skid plates on page 24.



KTM 200

Part Application

Honda Aluminum Skid Plates

B-100	CR 80-85 00-07
B-105	CR 125 02-07
B-422	CRF 150R 07-09
B-406	CR 250 88-89
B-432	CR 250 90-91
B-435	CR 250 92-93
B-450	CR 250 94-96
B-451	CR 250 97-99
B-452	CR 250 00-01
B-453	CR 250 02-07
B-456X	CRF 250R 04-09
	CRF 250X 04-09
B-454	CRF 450R 02-04
B-457	CRF 450R 05-08
B-464	CRF 450R 09
B-457X	CRF 450X 05-09
B-429	CR 500 87-88
B-213	CR 500 89
B-433	CR 500 90-01
B-410	XR 200 96-04
B-412	XR 250 96-04
B-411	XR 400 96-04
B-431	XR 600R 89-00
	XR 650 92-09
B-434	XR 650R 00-07

KTM Aluminum Skid Plates

B-259	85, 105 SX 05-07
B-211	125, 200 EXC, MXC, SX 98-03
B-255	125 04-09 200 04-07
B-265	200 XC, XCW 08-09
B-224	250, 300, 360, 380 EXC, MXC, SX 90-02
B-256	250, 300 EXC, MXC, XC, XCW 03-07
B-267	250-300 XC, XCW 08-09 / SX 250 07-09
B-256	250 SX 03-06
B-258	250 SXF 05-06
B-441	250 SXF 07
B-268	250 XCF, XCFW 07
B-275	250 XCF, /W, SXF 08-09
B-247	250 4-stroke EXC 04-06
B-218	350, 440, 500, 540, 550 89-97
B-236	400, 450, 520, 525 EXC, MXC, SX 00-03
B-247	400, 450, 525 XC, XCW, EXC, MXC 04-07
B-269	450-505 SXF, XCF 07-08
B-466	450 505 SXF, XCF 08
B-465	400, 450, 530 XCW, EXC 0
B-221	LC4 400, 600, 620 4-stroke kick no balancer
B-202	RXC Dual Sport oil filter in front
GasGas, Husaberg, Husky Skid Plates	
B-750	GasGas 200, 250, 300 88-09
B-281	GasGas 450-515 EC all
B-701	Husaberg 400-650 97-06
B-461	Husqvarna TE 610 05-08

Part Application

Yamaha Aluminum Skid Plates

B-240	YZ 80-85 93-09
B-421	YZ 125 05-09
B-245	YZ 125 95-04
B-212	YZ, WR 250 88-89
B-215	YZ 250 90-92
	WR 250 90-93
B-216	YZ 250 93-95
	WR 250 94-97
B-232	YZ 250 96-98
B-235	YZ 250 99-04
B-420	YZ 250 05-09
B-251	YZ 250F 4-stroke 01-05
B-261	YZ 250F 4-stroke 06
B-271	YZ 250F 4-stroke 07-09
B-252	WR 250F 02-06
B-274	WR 250F 07-08
B-233	YZ, WR 400F, 426F 98-02
B-241	YZ 450F 03-05
B-264	YZ 450F 06-09
B-243	WR 450F 03-06
B-272	WR 450F 07-09

Kawasaki Aluminum Skid Plates

B-253	KX 65 97-09
B-220	KX 80, 95, 100 96-09
B-237	KX 125 96-02
B-242	KX 125 03-07
B-217	KDX 200, 220 95-06
B-225	KX 250 90-91
B-227	KX 250 92-93
B-228	KX 250 94-04
B-257	KX 250 05-07
B-248	KX 250F 04-05
B-262	KX 250F 06-08
B-467	KX 250F 09
B-231	KLX 250 93-00
B-263	KX 450F 06-08
	KLX 450 07-09
B-468	KX 450F 09
B-222	KX 500 88-04
	KX 250 88-89

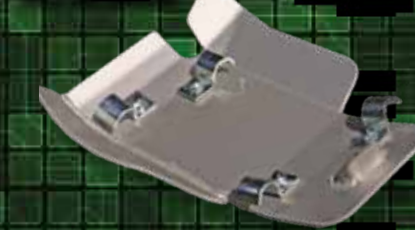
Suzuki Aluminum Skid Plates

B-253	RM 65 03-06
B-238	RM 80-85 98-08
B-220	RM 100 03
B-239	RM 125 01-08
B-440	RM 250 89-93
	RMX 89-98
B-443	RM 250 94-95
B-444	RM 250 96-98
B-445	RM 250 99-00
B-448	RM 250 01 08
B-273	RMZ 250 07-09
B-442	DR 250, 350 90-99
B-446	DRZ 400 00-08
	KLX 400 03-05
B-458	RMZ 450 05-07
B-469	RMZ 450 08-09

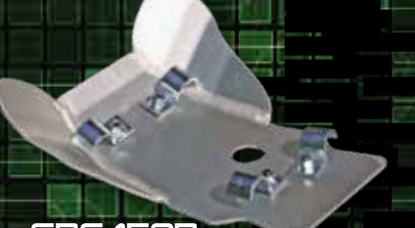
KX 80-100



KTM 250



CRF 450



CRF 150R



A. BOLT-ON SIDE STAND
 Mounting bracket bolts on with out modification to bike. Aluminum arm folds up out of harms way similar to the stock KTM kick stand. Strongest stand on the market.

B. CLAMP-ON SIDE STAND
 Constructed from aircraft grade chromoly steel. Clamps around the swingarm for quick and easy installation and removal without modifications.

C. KX MINI SIDE STAND
 Available for standard and big wheel KX minis. Constructed from aircraft grade chromoly steel. Mounts at lower chain roller bolt.

D. PROMOTO BILLET SIDE STAND
 Bolts on using existing mounting locations. Clear anodized finish for durability. Spring mechanism is internal. Folds up under the side panel so its out of the way. Made of 6061 billet aluminum.

E. TRIANGLE SIDE STAND
 Similar to many stands that come stock with motocross bikes. Works with most full size bikes with hollow rear axle. **Part # F-200**

CLAMP-ON SIDE STANDS

Part	Application
F-023	CR 80-85 96-07
F-023E	CR 80-85 E (Big Wheel) all years
F-020	CR 250 97-99 / CR 125 98-99
F-021	CR 125-250 00-07
	CRF 250-450 02-08
F-034S	CR 250 95-96 / CR 125 95-97
F-019	CR 500 87-01
	CR 125-250 88-94
F-019	KX 250 88-96
	KX 125 90-96 / KX 500 88-04
F-034	KX 125-250 97-02
F-035	KX 125-250 03-07
	KX 250F 04-05
F-032	RM 125-250 95-01
F-033	RM 125-250 02-06
	RMZ 450 05
F-035	RMZ 250 04-08
F-028	YZ 80-85 93-09
F-473	YZ, WR 250 89-90
F-030	YZ 125, 250, 250F, 400F, 426F 96-01
F-031	YZ 250 02-04 / YZ 125, 250F, 426, 450 02-04

BOLT-ON SIDE STAND

Part	Application
F-5102	CRF 150R 07-09 Small Wheel
F-5103	CRF 150R 07-09 Big Wheel
F-5001	CR 125, 250 02-03
	CRF 450 02-03
F-5011	CR 125-250 04-07
	CRF 250R 04-09
	CRF 450R/X 04-08
F-5104	CRF 450R 09
F-026	KX 80-85 00-09 (small wheel)
F-027	KX 100, RM 100 00-09,
	KX 85 Big Wheel
F-5400	KX 125-250 04-05
	KXF 250 04-05
F-5401	KXF 250 06-09
	KX 450 07-09 / KLX 450
F-5501	RMZ 450 06-07
F-5502	RMZ 450 08-09
F-5013	KTM SX, EXC, MXC 250-525 00-04
F-5301	EXC, MXC, XC, XC-W, XCF-W 250-525 05-07
F-5301	SX, SXF 250-450 05-06
F-5002	YZ 125-250 98-01
	YZF, WRF 98-04
F-5201	YZ 125-250 02-04
F-5202	YZ 125-250 05-09 2-strokes
F-5400	YZ 250F-450F 05
	RMZ 250 04-06
F-5203	YZ 250F-450F 06-09
	WR 250-450 07-08
F-PMB	Pro Moto Billet Kick Stand

**A**

A. ACERBIS DIMENSION

Dual filament 35w bulb. Four rubber straps for easy mounting. Design leaves plenty of room for cables and works well with mini bikes and big bikes. Available in most colors.

L-8440 35w/35w Standard Bulb

L-2113 35w/35w H4 bulb

B. ACERBIS DHH

Dual 35w bulbs in 24 degree pencil and 38 degree flood. Available in most colors.

L-3024 35w/35w Standard Halogen

**C**

C. ACERBIS CE

DOT approved 35w incandescent bulb. Rubber mounting straps. Many colors.

L-3026 35w Standard Halogen

D. UFO TWINS

Bright and efficient 35 watt halogen pencil and flood beam bulbs. 10, 20, and 50 watt bulbs are available. Rubber mounting straps for easy on and off. Colors in black, white, green, and Yamaha blue.

L-5454 35w/35w Standard Halogen

D

E. UFO GHIBLI

The Ghibli KDX replica is available with a 35 watt standard bulb or 55 watt halogen DOT approved version. Rubber mounting straps. Black, white, or green.

L-5430 35 watt standard bulb

L-5435 55 watt DOT halogen

F. TRAIL TECH X2

Voted Product of the Year by Dirt Rider Magazine. The X2 light features dual beams and provides excellent night riding capability. Highly recommended.

L-X2 Trail Tech X2 Halogen 70 watt

L-X2HID Trail Tech X2 HID 70 watt

NIGHT VISION



M



F



STEAHLY LIGHTING KIT

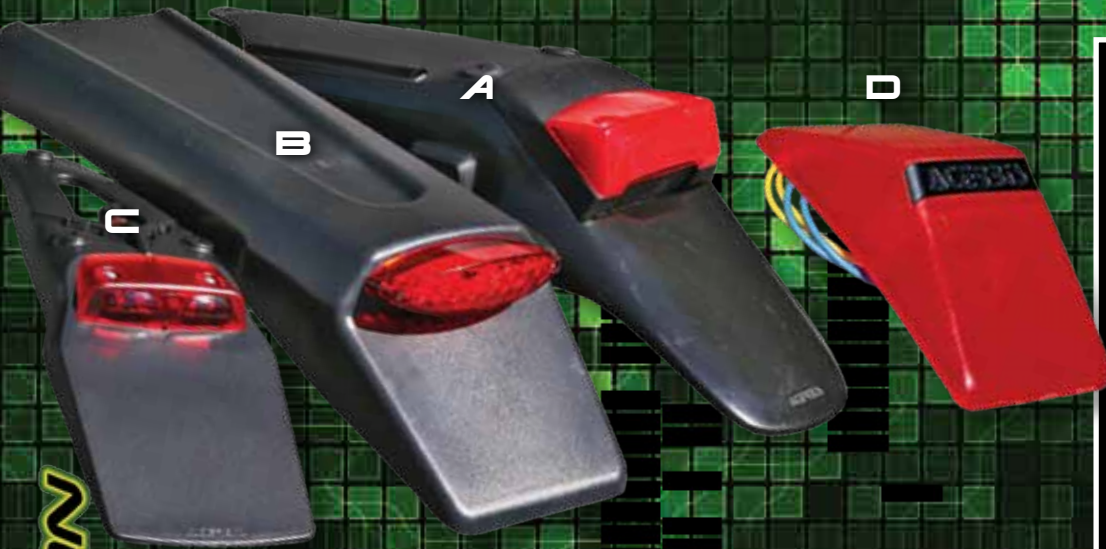
This kit makes it easy to install lights on your bike. It includes UFO Twins head light, a wire harness, and a compact handlebar mounted Hi/Lo/Off switch. Will work with DC (battery) or AC (lighting coil) power. Tail light and brake light can be added.

L-2 Steahly Lighting Kit

POWERJET LIGHTING KIT

Same as the lighting kit above but designed to run off of the power coil for the power jet carburetion system. No additional coils or batteries need to be added. Tail light and brake light may be added. Makes enough light for casual night riding.

L-5 RM 250 01-07
L-4 KX 250 98-07, KX 125 99-00
RM 250 99-00, CR 250 97-98



A. DROP DOWN TAIL LIGHT
 Made by Acerbis. Mounts under stock MX rear fender. Incorporates tail, brake and licence lights. Accepts our LED bulb. L-8352

B. LARGE LED TAIL LIGHT
 Mounts under stock MX rear fender. Has L.E.D. tail, rear brake and licence light bulbs draw less than one watt. Won't dim head light when brake light is on. Space for plate and signals. L-1000

C. ENDURO LED TAIL LIGHT
 Made by Acerbis. Light weight and compact it mounts under stock MX fender. L.E.D. tail and rear brake bulbs draw less than one watt. Won't dim your head light when brake light is on. Smaller/lighter than the lights above. No licence light. L-8326

D. MOLLSOFT TAIL LIGHT
 Compact shatter resistant design mounts easily to stock fender. Four watt tail light bulb and a four watt brake light bulb. L-0270

E. XR STYLE TAIL LIGHTS
 Mount easily to stock fender. Brake light wiring incorporated. L-5196 Compact
 L-5200 Large w/licence light.

F. MINI BLINKERS
 Approximately 1.5 inches in diameter. Easily mount any where. Flexible mounts and plastic housing make it crash resistant. L-11 Mini Blinker Light Qty. 1
 L-11A Mini Blinker replacement lens



SWITCHBOARD

G. HEADLIGHT SWITCH

Compact, 20mm wide, bar mount switch with off-low-high positions. Has a kill button which can also be used as a horn button. 18 inches of wire.
L-0050



H. OEM KILL BUTTONS

Original equipment replica kill buttons.
L-75202 CR / XR style
L-75203 YZ Style
L-75204 KX / KTM style
L-75-205 RM style



I. KDX BRAKE LIGHT SWITCH

Converts the stock tail light on Kawasaki KDXs and KLXs to have a working brake light. Includes resistor and brake switch. Can be adapted to other bikes that have a single element tail light.
L-046



J. HYDRAULIC BRAKE LIGHT SWITCH

This hydraulic switch fits most bikes on either the front or rear master cylinder. Replaces the banjo bolt located on the master cylinder where the hose connects.
L-8 10x1.25mm [Japanese bikes]
L-9 KTM / Brembo Brakes



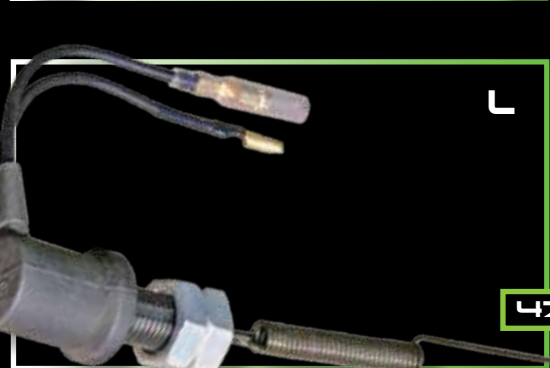
K. KTM IGNITION MAP SWITCH

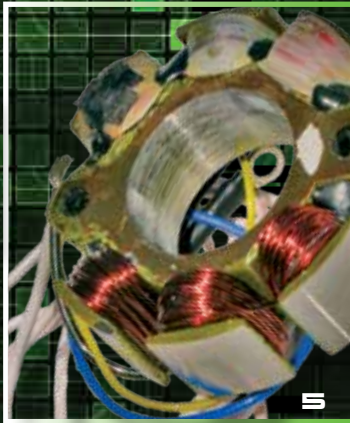
New KTMs come stock with two ignition maps. Gain access to both of them while you ride with our on/off handlebar switch.
L-0201



L. MECHANICAL BRAKE LIGHT SWITCH

Mechanical design that mounts to rear brake pedal for brake light. Fabrication for mounting is required for most bikes.
L-1006





LIGHTING COILS

Our coils are an inexpensive way to run lights without changing the power delivery of the motorcycle. They can be used with a Steahly flywheel weight. All coils have at least enough power to run a standard head light. Some have enough power to run a dual sport kit. Some are added coils, some replace the existing coils. A flywheel puller is needed for most installations.

1 & 2. These complete coil assemblies replace the stock coil, pickup coil and wire harness. It mounts directly to the inside of the ignition cover. This style fits RM-Z 250 and 450, KXF 250, CRF 250 & 450.

3 & 4. These styles include a complete stator assembly with lighting and ignition coils, stator plate, pickup coil, and wire harness. This replaces the entire stock stator unit. This style is used on late model CR250 and most full size Yamahas.

5. This type of unit includes a new ignition coil with lighting capabilities and leads. It bolts to the stock stator plate on RM 250, KTM SX, CR 250 97-01 and late model KX 250.

6. This design is a new lighting coil that mounts on the stock stator plate and is completely independent of the ignition circuit. This style is used on KX 500, CR 500, KDX, KX minis and 90-95 YZ250.

Part Application

Honda Lighting Coils

- L-965 CRF 150R 07-09 (75 watt)
- L-45 CR 125-250-500 84-85 (60 watt)
- L-1210 CR 125, 250 86-88 / CR 500 86 (45 watt)
- L-150 CR 125 90-95 / CR 250 89-92 (60w) stator
- L-230 CR 250 93-96 (80 watt) stator
- L-97 CR 250 97-98 (50 watt)
- L-99 CR 250 99-01 (60 watt)
- L-1292 CR 250 02-07 (60 watt) stator
- L-1295 CRF 250R 04-09 / CRF 450R 05-09 (75 watt)
- L-1495 CRF 450R 02-04 (75 watt)
- L-8201 CRF 250-450R kit with flywheel (90 watt)
- L-19 CR 500 87-01 (40 watt)

Kawasaki Lighting Coils

- L-12 KX 80, 100, 125, 250 89-91 (40 watt)
- L-13 KX 80, 85, 100 92-08 (40 watt)
- L-13 KX 125-250 92-97 (40 watt)
- L-99 KX 125 01-06 (60 watt)
- L-22 KDX 200, 220 89-06 (65 watt)
- L-98 KX 250 98-08 / KX 125 98-00 (50 watt)
- L-2275 KXF 250 04-06 (75 watt)
- L-31 KX 500 84-85, 90-04 (65 watt)
- L-3450 KX 450F 06-08

KTM Lighting Coils

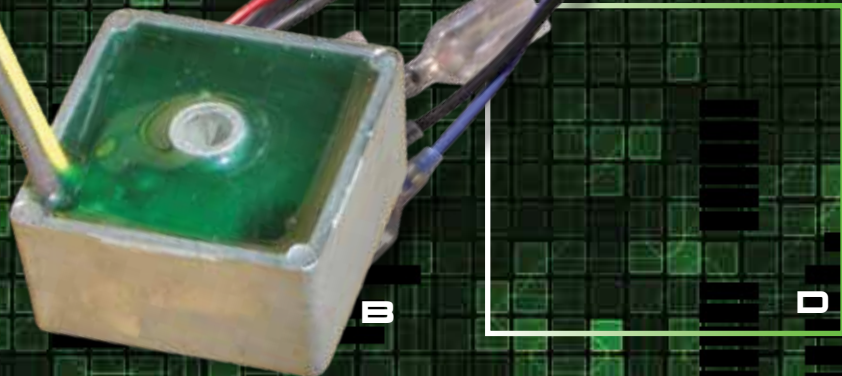
- L-38 SX 65, 85, 105 03-06 (50 watt)
- L-46 SX 125, 250 97-06 (60 watt)
- L-49 SXF 250 05-06
- L-46 SX 450-525 03-06 / SMR 540 (60 watt)

Suzuki Lighting Coils

- L-45 RM 250 87-93 / RM 125 87-93 (60 watt)
- L-46 RM 250 94-97 / RM 125 04-08
- L-47 RM 250 98-01 / RM 125 98-03 (50 watt)
- L-48 RM 250 02-07 (50 watt)
- L-2275 RMZ 250 04-06 (75 watt)
- L-2475 RMZ 450 05-07

Yamaha Lighting Coils

- L-38 YZ 85 02-09 / YZ 125 96-03 (50 watt)
- L-4150 YZ 125 04-09 stator (50 watt)
- L-45 YZ 250 85-87 (60 watt)
- L-14 YZ 250 90-95 / WR 250 89-98 (55 watt)
- L-38 YZ 250 96-98 (50 watt)
- L-4239 YZ 250 99-09 stator assembly (45 watt)
- L-4438 YZ 250F 04-09 / YZF 400, 426, 450 99-05
- L-31 YZ 465, 490, WR 500 (45 watt)
- L-4458 YZ 450 06-09 stator



A. LED LIGHTING KIT

This is a trick system that is easily adaptable to almost any bike. It uses small LED lights and draws power from your stock ignition without affecting power or ignition output. Makes enough light for enduro inspection but not enough for night riding.

- L-LED LED Lighting Enduro System
- L-LED12V LED Lighting Enduro System for EFI

B. VOLTAGE REGULATOR

For use with most AC (no battery) lighting applications. Limits maximum voltage to 14 volts to prevent bulbs from burning out. Easy to install, can be mounted almost anywhere and is recommend with all our lighting coils.

- L-4603 Voltage regulator 12 volt AC

C. REPLACEMENT BULBS

For Twins, DHH, Blitz, and Diamond lights. Customize your light for the output of your lighting coil with 10, 20, 35, & 50 watt pencil or flood beam bulbs. Easy replacement.

- L-10W 10 watt replacement bulb
- L-20W 20 watt replacement bulb
- L-35W 35 watt replacement bulb
- L-50W 50 watt replacement bulb

D. WIRE HARNESS

This simple wire harness makes head light, tail light, and brake light installation easy. Made to work with the handle bar mounted headlight switch (L-0050).

E. LED TAIL/BRAKE BULB

Draws less than 1 watt. Replaces standard 1157 bulbs. Super long life and holds up to vibration for ultra reliability. Great for low wattage systems. Will not cause head light to dim when brake light comes on like standard bulbs. Works on both AC and DC systems.

- L-1157

F. 35 & 45 WATT BULBS

Replacement bulbs for Ghibli, Dimension and CE.

- L-0018 Standard Bulb 35w for UFO, Acerbis
- L-0019 Bulb Standard 45w for UFO, Acerbis

G. HALOGEN H-4 BULB

Comes in 55 watts or 35 watts for the DOT Ghibli and other head lights.

- L-02672 Bulb Halogen, 35 watt H4 halogen
- L-H455 Bulb Halogen, 55 watt H4 halogen



REKLUSE Z-START AUTOMATIC CLUTCH

The Rekluse z-Start Clutch is an automatic clutch that simply replaces your stock pressure plate. Control the bike by simply turning the throttle. The z-Start Clutch eliminates stalling, improves traction, reduces arm pump, improves starts, increases corner speed, and puts more power to the ground in the most demanding situations. Whether you're a beginning trail rider or experienced off-road competitor, you can benefit from the industry-leading z-Start Clutch.

REKLUSE Z-START PRO

The z-Start Pro offers unique benefits as a high-end complement to Rekluse's industry-leading z-Start Clutch. The z-Start Pro offers features which directly benefit pro-level riders, motocross riders, and any motorcycle or ATV rider looking for the highest level of clutch performance, including:

- Perfect override through the entire RPM range
- Smoother engagement with more consistent clamping force
- Billet aluminum center clutch maximizes clutch performance and increases durability
- Simple installation without mounting shims
- Minimal maintenance required

Rekluse Z-start Pro

Application

CRF150R 07-09
 CRF250R/X 04-09
 CRF250R 2010
 CR250R 02-07
 CRF450R 02-08
 CRF450R 2009
 CRF450X 05-09
 CR500R 90 - 07
 Husaberg 400, 450, 501, 550 04-08
 Husaberg FE 390/450/570 09-10
 Husqvarna WR250/300 2ST 99-09
 Husqvarna TE/TC/XC 450, 510 06-09
 KTM 450/505 SX-F; 450/505 XC-F (07 SX-F) 08-09
 KTM 85SX; 105 SX/XC 03-09
 KTM 450/530 EXC; 400/450/530 XC-W 08-10
 KTM RFS All Models 04-07
 KTM 250/300/380 2-Stroke 99 - 03
 KTM 250 SX 2003; 250/300 XC 2-Stroke 04-10
 KTM 125/144/200 2-Stroke; 09 150 98 - 10
 KTM 250 SX-F; 250 XCF & XCF-W 06-10
 KX250F 04-08
 KX250F 09-10
 KX450F 06-10
 KX450F 08-09
 RMZ250 04-06
 RMZ250 07-09
 RMZ50 06-08
 RMZ450 08-09
 RMZ450 05-07
 YZ250 99 - 10
 YZ/WR250F 01-10
 YZ125 Add-on Kit (order RMS871 and RMS258) 05-09
 YZ450F 03-04
 YZ450F 05-09
 YZ450F 2010
 WR450F 03-06
 WR450F 07-09
 YZ426F/WR426F 00 - 02

Part

RMS810
 RMS812
 RMS816
 RMS811
 RMS813
 RMS814
 RMS819
 RMS817
 RMS826
 RMS827
 RMS856
 RMS856
 RMS830A
 RMS831
 RMS832
 RMS833
 RMS835
 RMS836
 RMS837
 RMS838A
 RMS861
 RMS840
 RMS845
 RMS845
 RMS861
 RMS867
 RMS863
 RMS864
 RMS865
 RMS870
 RMS871
 RMS872
 RMS872
 RMS873
 RMS876
 RMS872
 RMS873
 RMS875

Rekluse Z-start

Application

GasGas 2-Stroke (except 125) 00-09
 GasGas 450 03-07
 CRF250R 04-08
 CRF450R 02-08
 XR650R 01-07
 CRF250X 04-08
 CRF450X 05-08
 Husaberg 350, 400 and 501 89-02
 Husqvarna TE/TC 250/450/510 04-05
 Husqvarna TE/TC 250 06-07
 KTM 400/450/525 XC, XC-W 07
 KTM RFS all models 00-01
 KTM RFS all models 02
 KTM RFS all models 03-05
 KTM RFS (250/400/450/525) 06
 KTM 250/300/380 (except 2003 250SX) 99-03
 KTM 250SX 2003; 2-Stroke (250/300) 04-09
 KTM 125/144/150/200 98-09
 KTM 250 SX-F; 250 XCF & XCF-W 06-09
 KTM 65 SX 02-10
 KX65 00-09
 KX250 03-04
 KX250 05-07
 KLX400 02-04
 RM65 00-05
 DRZ400 00-09
 RMZ250 07-09
 RM250 99-08
 YZ/WR 250F 01-09
 YZ450F, WR450F(4) 03-09
 YZ/WR 426F 00-02
 TTR125 00-09

Part

RMS100
 RMS100
 RMS112
 RMS113
 RMS114
 RMS116
 RMS119
 RMS125
 RMS155
 RMS155
 RMS130
 RMS131
 RMS132
 RMS133
 RMS134
 RMS135
 RMS136
 RMS137
 RMS138
 RMS139A
 RMS140A
 RMS143
 RMS144
 RMS160
 RMS140
 RMS160
 RMS167
 RMS163
 RMS171
 RMS172
 RMS173
 RMS177



REKLUSE CORE EXP CLUTCH

Rekluse introduces an all new type of clutch system that can be configured in two different operating modes: manual mode or anti-stall mode. The Rekluse Core Manual Clutch consists of a center clutch, a matched set of steel drive plates, springs and a manual pressure plate. The Rekluse Core EXP Clutch consists of a center clutch, a matched set of steel drive plates, springs, an EXP friction disk and an EXP pressure plate. All Rekluse Core Clutches work with your bike's stock friction disks or Rekluse friction disks. One of the primary benefits to the Rekluse Core Clutch is the ability to change from anti-stall mode (Core EXP Clutch) to manual mode (Core Clutch) in a matter of minutes.

CORE MANUAL

The Rekluse Manual Pressure Plate is engineered to deliver the best performance and durability in a CNC machined replacement for your bike's stock cast clutch components. Not just another CNC copy of stock clutch components, the Rekluse Manual Pressure Plate combined with the Rekluse Core Clutch gives you the best performing and most durable stock-replacement clutch components available.

CORE EXP

The Rekluse EXP Pressure Plate and EXP Friction Disk transforms the Rekluse Core into a clutch that automatically disengages at idle, preventing accidental engine stalls while maintaining the clutch lever modulation and feel of a best-in-class manual pressure plate. Forget everything you've ever thought or heard about a centrifugally-actuated clutch: the Rekluse EXP changes the rules for a high performance clutch.

REKLUSE Z-START BRAKE KIT

The z-Start Brake kit is designed to enhance rider control. The z-Start Brake enables the rider to use their left hand to actuate the rear brake. Moving rear brake control to the left hand enhances your riding experience by significantly improving braking control in tight corners, right turns, and other technical riding situations.

There are two options for brake kits: Left-hand only which replaces the foot pedal completely and a Dual-Actuated model that enables brake activation with either the left hand or right foot.

The stock clutch lever and perch must be removed to install the z-Start Brake Kit. For cable-clutch bikes, a special override option is available to add a small clutch override to the brake master cylinder.

STEEL CLUTCH PLATES

High quality steel drive plates will not contaminate transmission oil like fast wearing stock aluminum plates. They don't expand as much when hot which causes lever adjustment to change. Steel plates add a small amount of rotating mass which equals smoother power delivery. Made by Barnett.



FMF PIPES

FATTY (A) - Great power everywhere with emphasis on mid range and enhanced over rev. FMF's most popular pipe.

K-F FMF pipe Fatty most 2 stroke

GNARLY (B) - Low and mid range boost without top end loss. Smooth power delivery for off road. Heavy gauge steel.

K-G FMF pipe Gnarly most 2 stroke

SST (C) - FMF's latest technology for their highest performance gains ever. Increases mid range pull, extends over rev, and sharpens off idle response.

K-SST FMF pipe SST most 2 stroke

FMF 2-STROKE SILENCERS

Q STEALTH (D) - FMF's latest 2-stroke technology. All bikes are between 89 and 93 dB. Boosts low end power while making the bike super quiet.

K-QST Stealth Quiet Silencer most 2 stroke

Q (E) - FMF kept power in mind with this silencer and lost nothing. Help keep our riding areas open by making your bike quieter. Meets 96 dB standards.

K-Q Quiet Silencer most 2 stroke

TURBINE CORE 2 (F) - USFS approved spark arrestor for two-strokes.

K-TC2 FMF silencer Turbine Core 2 spark arrestor late models

K-TC FMF silencer Turbine Core S/A older 2 strokes 87-95

POWER CORE 2 - Durability and strong performance. For most late models K-PC2. Power Core - FMF's MX silencer for most 87-95 models.

K-PC FMF silencer Power Core older 2 stroke

K-PC2 FMF silencer Power Core 2 most 2 stroke

FMF 4-STROKE SILENCERS

Q4 & Q4Ti (G) - USFS approved spark arrestor. The Q4 employs intricate chambers, baffles and proprietary multistage packing material making it the best performing quiet muffler available. With the Q4 you don't need to hear the power, just feel the power! Max Sound output 96dB; most models below 93dB. Constructed from aircraft grade aluminum and high strength stainless steel or with the Q4Ti get TiMetal canister and end caps. Use with stock or FMF header.

K-Q4 FMF Q4 96db Silencer most 4 strokes

K-Q4Ti FMF Quiet Titanium silencer most 4 strokes

ALUMINUM PIPE GUARD

Will fit any two stroke exhaust pipe to help protect against dents and dings that cause power loss.

J-888 Heavy duty aluminum (silver only)

J-99010 Light weight aluminum (silver, black, or gold)

UNIVERSAL 4-STROKE STAINLESS STEEL PIPE GUARD

Will fit most four stroke exhaust pipe to help protect against dents and dings that cause power loss.

J-868 250cc

J-869 450cc

CARBON FIBER PIPE GUARD

Light weight, strong, and trick looking. This is the best guard money can buy. Makes your bike quieter by absorbing sound coming through the pipe wall. It also increases power by raising exhaust gas temperature. Must specify brand and model of pipe when ordering.

J-CF Carbon Fiber Pipe Guard for 2-strokes

4. EXHAUST PIPE SPACER

Adds length to exhaust header for more low end torque. Simply insert it between the exhaust pipe and the cylinder. Available for most 250cc two strokes.

K-0203 Pipe Torque Spacer

5. POWER VALVE SPACER

Increases size of power valve chambers for more low and mid range torque. Available for 92-01 CR 250, 99-07 YZ 250.

K-1 Torque Spacer CR250/YZ250

ENDOS SPARK ARRESTOR END CAP

Convert your stock 4-stroke muffler into a USFS approved spark arrestor. Made of billet aluminum. Removable screen type spark arrestor. Made by Pro Moto Billet.

K-PMB Pro Moto Billet End Cap Spark Arrestor

ENDOS QUIET INSERT

Keep Riding areas open! This insert reduces exhaust note by 3-5 decibels for a more acceptable sound intensity level.

K-PMB1 Pro Moto Billet Quiet Insert



NV2 SUSPENSION FORK RE-VALVE

NV2 custom fork valving will increase plushness without sacrificing bottoming resistance. You will see a significant decrease in deflection in roots and rocks and an increase in stability through rough terrain.

Twin Chamber Fork - includes shims and oil
 Open Cartridge Fork - includes shims and oil

NV2 SUSPENSION SHOCK RE-VALVE

NV2 custom shock valving will increase plushness without sacrificing bottoming resistance. Our custom shock valving will increase stability in the rear of your motorcycle for less rear end swap. Shock valving is extremely sensitive to changes in spring rate, our custom valving will matched to the spring rate best suited for your size and ability.

includes shims and oil

NV2 SUSPENSION LOWERING

Shorter and less experienced riders can gain confidence by being able to simply touch the ground on their motorcycle. We can lower nearly any motorcycle up to 2 inches.

Twin Chamber Fork - includes lowering kit, oil and springs

Open Cartridge Fork - includes lowering kit, oil and springs

Shock - includes lowering kit and oil.

**A new shock spring may be required for proper setup.

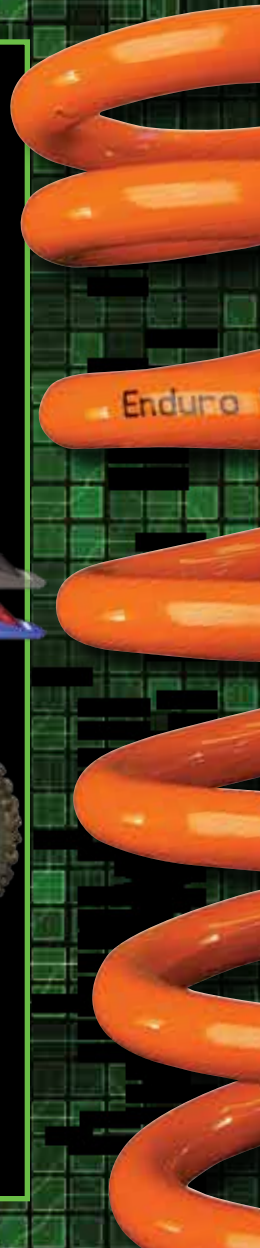
NV2 SUSPENSION MAINTENANCE

As you ride your suspension fluids break down and become contaminated and dirty. Dirt gets through your seals, bushings and aluminum parts wear leaving particles in the fluid. This results in an ongoing plunge in performance. Most riders will be amazed at how good something as simple as servicing your suspension will make your suspension feel.

Twin Chamber Fork - includes oil

Open Cartridge Fork - includes oil

Shock - includes oil



SHOCK SPRINGS

Shock Springs for (most) KYB, Showa

PDS Progressive WP Shock Springs
Progressive sizes PDS 5, 6, 7, 8, 10
260mm length for better adjustment.
35-PDS5 thru 35-PDS10

Straight Rate WP Shock Springs
Rates: 6.6, 6.9, 7.2, 7.6, 8.0, 8.4, 8.8, 9.2, 9.6
260mm length for better adjustment.
35-066 thru 35-096

FORK SPRINGS

Fork Springs for (most) WP, KYB, Showa, Marzocchi

43mm WP Fork Springs
Rates: .38, .40, .42, .44, .46, .48, .50
36-038 thru 36-050

48mm WP Fork Springs
2003-07 KTM WP forks, except 2007 SX models, 2008-2010
XC-W/XCF-W/EXC models
Rates: .36, .40, .42, .44, .46, .48, .50
36-136 thru 36-150

48mm WP Fork Springs - Twinchamber SX Models
KTM 2007-2010 SX models, 2008-2010 200 xc models
Rates: .38, .40, .42, .44, .46
37-138 thru 37-146

48mm WP Fork Springs - Twinchamber XC Models
KTM 2008-2010 XC models (except 200xc)
Rates: .38, .40, .42, .44, .46, .48, .50
38-138 thru 38-150

for most

for most

A. BILLET SHOCK SPANNER WRENCH

At last a spanner wrench that makes adjusting your KTM/PDS shock a breeze. Designed to loosen or tighten the shock adjusting collar without having to get out that damaging punch.
22-300 All PDS shocks with single adjusting collar.

B. TWIN CHAMBER FORK CARTRIDGE HOLDER TOOL

Take the hassle out of disassembling twinchamber forks with this simple tool.
22-350

C. FORK SEALS

We stock seals for most late models and many older bikes. 48mm WP Fork Seals and Dust Wipers

36-011 Fork Oil Seal 48mm WP sold individually
36-014 Fork Dust Wiper 48mm WP sold individually



KYB **SHOWA** **WP** **MARZOCCHI**



Hand guards specifically designed to fit mini bar bends. Many styles to choose from. See page 38 for more info.



Everything you need to put lights on your mini. Lighting coils to power everything from head and tail lights to grip heaters. See pages 28-33 for more info.



Slamming into rocks and logs will be no problem with one of our skid plates.



Use one of our side stands instead of a tree to hold your mini up on the trail.



Extend your ride with an oversized fuel tank designed for your mini.

We have exhaust systems for two and four strokes that will get you on the trail spark arrested and under the legal 96db noise limit.

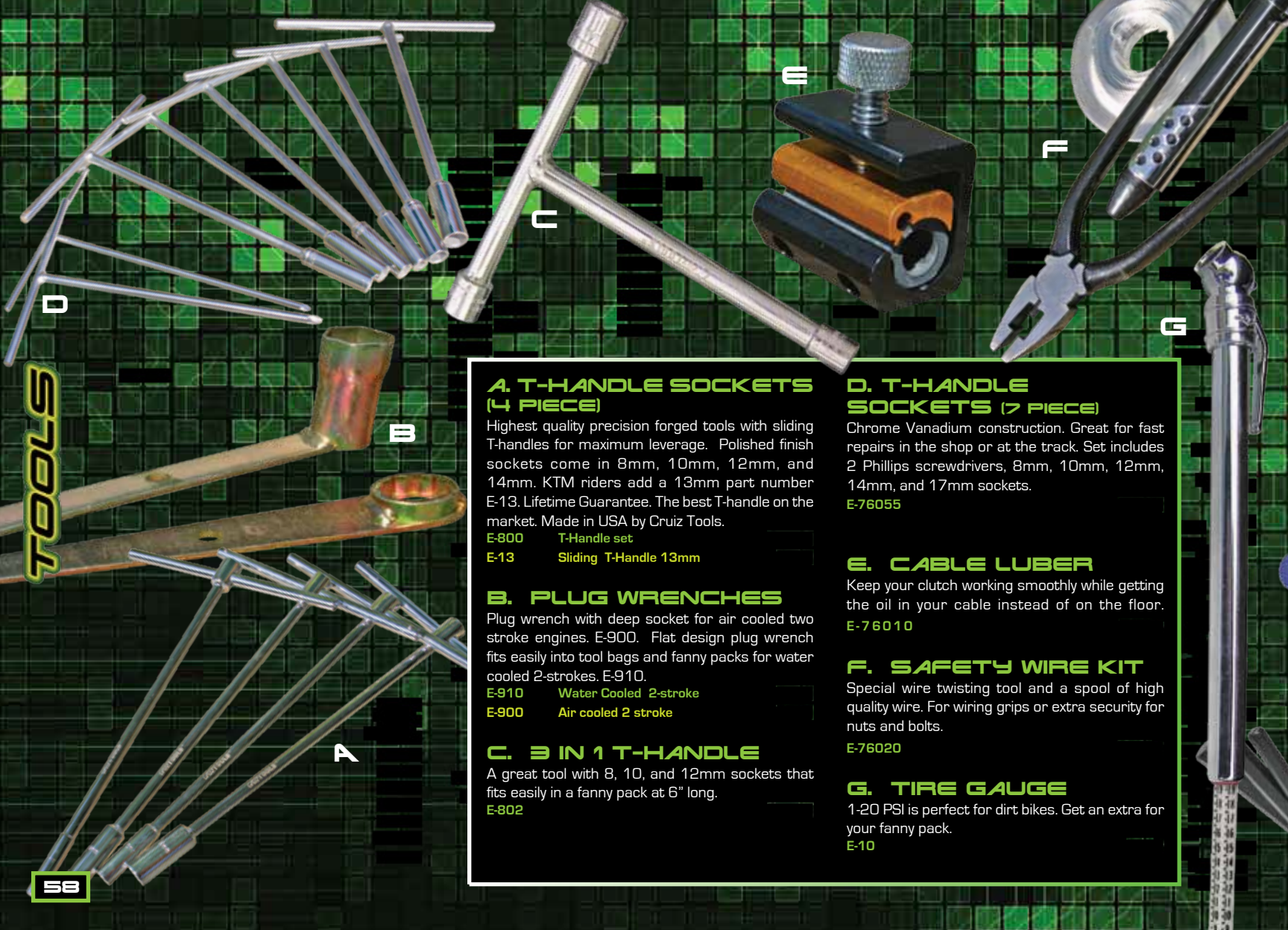


Throw away the weak stock chain and sprockets and get an o-ring chain conversion kit with high end sprockets that will last.

ADVENTURE MINI

We offer a full line of products specifically designed for small bikes. Every thing you need to convert your hyper MX mini into a bike perfect for the woods and trails. Call us to discuss the parts you need for your Adventure Mini.





D

B

C

E

F

G

A. T-HANDLE SOCKETS (4 PIECE)

Highest quality precision forged tools with sliding T-handles for maximum leverage. Polished finish sockets come in 8mm, 10mm, 12mm, and 14mm. KTM riders add a 13mm part number E-13. Lifetime Guarantee. The best T-handle on the market. Made in USA by Cruiz Tools.

- E-800 T-Handle set
- E-13 Sliding T-Handle 13mm

B. PLUG WRENCHES

Plug wrench with deep socket for air cooled two stroke engines. E-900. Flat design plug wrench fits easily into tool bags and fanny packs for water cooled 2-strokes. E-910.

- E-910 Water Cooled 2-stroke
- E-900 Air cooled 2 stroke

C. 3 IN 1 T-HANDLE

A great tool with 8, 10, and 12mm sockets that fits easily in a fanny pack at 6" long.

- E-802

D. T-HANDLE SOCKETS (7 PIECE)

Chrome Vanadium construction. Great for fast repairs in the shop or at the track. Set includes 2 Phillips screwdrivers, 8mm, 10mm, 12mm, 14mm, and 17mm sockets.

- E-76055

E. CABLE LUBER

Keep your clutch working smoothly while getting the oil in your cable instead of on the floor.

- E-76010

F. SAFETY WIRE KIT

Special wire twisting tool and a spool of high quality wire. For wiring grips or extra security for nuts and bolts.

- E-76020

G. TIRE GAUGE

1-20 PSI is perfect for dirt bikes. Get an extra for your fanny pack.

- E-10



H

H. FORK SEAL CLEANER

Stops leaking fork seals by cleaning out trapped dirt and grime.
E-804

I. T-HANDLE SPRING PULLER

8 inch tool makes removal of pipe springs a breeze. It's the best spring puller tool you will ever use.
E-803

J. TIRE IRONS

Standard irons in 9 inches or 16 inches. Terry Cable tire spoons have a comfortable form fitting handle and spooned head to prevent pinching. The 15-inch curved tire iron provides maximum leverage and reduces pinching.

- E-76151 Tire Iron 15 inch curved
- E-76161 Tire Iron 16 inch straight
- E-76091 Tire Iron 9 inch straight
- E-10003 Tire Iron Ultimate by Terry Cable

K. OUTBACKER MULTI-TOOL

3mm, 4mm, 5mm, and 6mm hex keys, slotted and Phillips screwdrivers, 1/4" socket driver with 8mm, 10mm and 12mm sockets, 13mm and 14mm open-end wrenches, spoke wrenches in 6.0, 6.3, and 6.4mm. Measures 3.5" long and a mere nine ounces.
E-14

L. FOLDING HEX KEYS

3mm, 4mm, 5mm, 6mm, 8mm, and 10mm hex keys fold into sturdy composite handle. All sizes for any bike in one tool. Strong enough to tighten even big bolts.
E-801

M. O-RING CHAIN PRESS TOOL

For easy installation of tight fitting o-ring chain master links. Pushes the link plate on quickly and safely.
E-11



J

M

L



A

A. FUEL TANKS BY IMS AND CLARKE

Made by IMS or Clarke of high quality plastic. Oversize tanks allow for riding longer distances. Available in many colors including natural which allows you to see the fuel level through the tank.

P-CLARKE Fuel Tank by Clarke for most bikes

P-IMS Fuel Tank by IMS for most bikes

B. ONE-WAY VENT CAP

Trick looking one way valve lets air into your tank but gas doesn't spill out when you tip over. Eliminates hassles with conventional vent hoses when gassing up. In silver, gold, blue, or black.

P-8 Tank Vent Cap

C. MSR RADIATOR GUARDS

Mount in place of stock plastic louvers for added protection against roost and sticks. Also increases rigidity of the radiators.

J-RGMSR* MSR Radiator Guard

*Note: Part number needs to accompany make and model of bike when ordering.

D. DUAL SPORT MIRROR

Folding design made of light weight plastic. Clamps to handlebar.

P-M Mirror Right Side

P-M1 Mirror Left Side

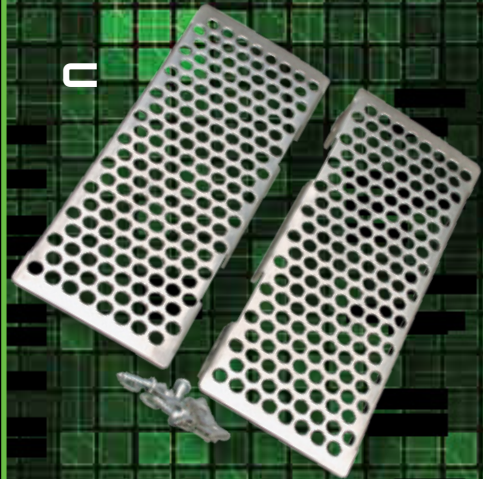
E. QUICK BRAKE PINS

OEM brake pins have Allen heads that round out and are difficult to remove. These quick pins feature a socket head that allows quicker, easier brake pad changes.

W-1 Brake Pin Long 54mm

W-2 Brake Pin Short 38mm

BIKE	FRONT	REAR
CR, XR	1 W-1	1 W-2
KX 95-03	1 W1	1 W-2
KX 94	1 W-1	2 W-2
KX Thru 93	2 W-2	2 W-2
RM 97-03	1 W-1	1 W-2
RM Thru 95, RMX	2 W-2	2 W-2
YZ, WR all	1 W-2	1 W-2



C

D



E



B



F. RIDER WRENCH

3 in 1 tool that fits spark plug (on 2-strokes only), front axle, and rear axle. Flat design fits nicely into fanny packs and tool kits.

- E-28 Rider Wrench 22mm x 24mm x Plug
RM 125-250 98-05 / CRF 150R
- E-30 Rider Wrench 17mm x 27mm x Plug
KTM 125-525 / GasGas
CR 89-92 / YZ, WR 89-91
KX 86-89 / KDX 95-06 / KLX 93-06
- E-31 Rider Wrench 19mm x 27mm x Plug
KDX 86-94 / YZ, WR 92-95 / CR 93-94
- E-33 Rider Wrench 17mm x 30mm x Plug
KX 125-250 90-92 / some ATK
- E-34 Rider Wrench 22mm x 27mm x Plug
CR 95-99 / KX 125-250 93-02 /
YZ, YZF, WRF 125-450 96-06
- E-37 Rider Wrench 22mm x 32mm x Plug
KX, KXF 125-450 03-07 / KLX 450
RMZ 250-450 04-07
CR 125-250 00-07 / CRF 250-450 02-07

G. HOODED SWEAT SHIRT

- T-28 Hooded Sweat Shirt (Small)
- T-29 Hooded Sweat Shirt (Medium)
- T-30 Hooded Sweat Shirt (Large)
- T-31 Hooded Sweat Shirt (XL)
- T-32 Hooded Sweat Shirt (XXL)

H. STEAHLY T-SHIRTS

T-Shirt made of 100% preshrunk cotton.

- T-18 T Shirt Steahly (Small)
- T-19 T Shirt Steahly (Medium)
- T-20 T Shirt Steahly (Large)
- T-21 T Shirt Steahly (XL)
- T-22 T Shirt Steahly (XXL)

I. STICKER SHEET

Red/Yellow or Red/Blue. Four stickers per sheet.

- T-1 Sticker Sheet

J. SWINGARM STICKER

8" x 2.25" sold as a set of two.

- T-2 Stickers

K. STEAHLY BANNER

48" x 22.5"

- T-100 Banner



STEADILY FLYWHEEL FREQUENTLY ASKED QUESTIONS

Does a heavier flywheel reduce horsepower?

No, that is a common misconception. It will make the RPMs build slower, which makes the power smoother, easier to control, and increases traction, but does reduce horse power or torque. In a Dyno test reported by Dirt Rider Down Under Magazine a 10 ounce Steahly Flywheel on a 2006 CR 250 produced a top end increase of 1.13 hp. It also gave a huge mid range increase of 2.09 ft-lbs of torque and 3.67 hp!

How much weight should I add?

That depends on many factors, such as type of terrain you ride, how good of a rider you are, your riding style (aggressive or casual?), what kind of power you like, the type of power your bike has, and if your engine is modified. Here are some general guidelines:

1. Slower and more technical terrain requires a heavier flywheel weight than fast open terrain. Slicker ground, whether mud or hard pack, requires more flywheel weight than loam, sand, and good traction. So most riders would want more weight for the woods than for desert or MX.
2. Riders with a lazy riding style, slow riders, less experienced riders, or guys who just have too much bike for their skill will need more flywheel weight than fast and aggressive riders. Older, smarter, smoother riders usually like more flywheel weight than young, hyper, pin the throttle riders.
3. If your bike has a hard hitting or explosive type of power delivery, whether it is that way stock or it has been modified, you will need a heavier flywheel weight than a bike that has a smooth power delivery. The exception to that might be if you have a 65 to 125cc engine, see the question below.

How does adding flywheel weight work on 125s and minis?

It works great for woods riding and for timid, less aggressive riders. We sell tons of flywheels for minis because it is the best, most cost effective way to make the motocross type power usable and controllable for kids, beginners, and slower riding. A fast and skilled MX rider probably would not want to add much flywheel to his small engine, but there are exceptions. Andrew Short used a Steahly Flywheel on his RM 125 to win the East/West Supercross because his engine was so highly modified it need more flywheel to get the power to the ground. When choosing the amount of weight to add to a small engine use caution. It is possible to add too much, causing the bike to bog instead of accelerate when slipping the clutch to get it into the power band. This is usually not an issue with timid riders because they don't slip the clutch, so they can get the heaviest weights (10 to 12 ounces). A fast and aggressive rider should get the lighter weight flywheels (6 to 8 ounces).

Will a heavier flywheel help for MX?

Not for everybody all the time, but many riders will ride faster with more flywheel weight. Many motocrossers who have not tried a Steahly Flywheel think they make the bike too slow, but MX Action Magazine named it "One of the 35 Products Guaranteed to Make You Faster". Almost all motocrossers will like more flywheel when it is slippery, because the bike will hook up better and be easier to control. Riders who are smoother, tend to lug the motor, or ride a gear higher will like it also. Riders who bought too much bike (too much power) will love a heavier flywheel. Bikes that have expert only power delivery, such as 450s, or bikes that are modified will be much easier to ride and be much less tiring with a Steahly Flywheel.

Does increasing the flywheel weight cause more wear to the engine?

No, in over 20 years of our experience with flywheel weights we have never seen an increase in noticeable wear.

Does where you put the flywheel weight matter?

Yes, the amount of flywheel effect you feel is controlled by not only the amount of flywheel weight, but also the size (diameter) of that weight. In other words, a 12-ounce flywheel that is 4 inches in diameter will have more effect than a 12-ounce flywheel with a 3-inch diameter. That is why we always try to make our flywheels as large of diameter as possible, but still fit inside the stock ignition cover. Some newer 4-strokes do not have enough room in the ignition cover to add a flywheel weight to the ignition. For those bikes we offer steel clutch baskets, which are much heavier than the stock basket and have a much larger diameter than a standard flywheel weight, but rotate at a slower speed than a ignition flywheel. Therefore, a steel clutch basket usually gives you about the same amount of flywheel effect as adding 10 to 13 ounces on the ignition flywheel.

What tools do I need?

All of our 2-stroke flywheel weights can be installed with ordinary hand tools. A flywheel puller is not needed, but a Steahly Engine Lock Up Tool is recommended for easiest installation. A torque wrench is also recommended. If you are installing a complete flywheel on a 4-stroke you need ordinary hand tools and the correct flywheel puller for your bike. Do not try to use automotive pullers, you can do costly damage. We sell pullers for the best prices. A torque wrench is also recommended for 4-strokes.