



Instructions for Use

Thank you for purchasing your new SHOEI helmet. This manual contains valuable information to help you understand how to operate and maintain your helmet. Please read this manual carefully before use and keep it for future reference. Your SHOEI dealer can provide a replacement if this manual is lost.

NEOTEK

Read This First

Confirm the Packed Items

Parts Description

Ventilation System

Opening and Closing the Face Cover

Chin Curtain

Breath Guard

Ear Pads

CNS-1 Shield / Visor

Important Notice about Handling the CNS-1 Shield / Visor

Pinlock® fog-free lens

QSV-1 Sun Visor

Important Notice about Handling the QSV-1 Sun Visor

Removing and Installing the Face Cover

Applying Silicone Oil

Replacing Interior Parts

Removing and Installing Interior Parts

Important Notice about Handling Interior Parts

Parts List

Read This First

This product is a motorcycle helmet.

Do not use it for any purposes other than riding a motorcycle. If you use the helmet for any other purpose, it may not provide sufficient protection in case of an accident.

No helmet can protect the wearer against all foreseeable high speed and low speed impacts.

For maximum head protection, the helmet must fit properly and the retention system must be securely fastened under the chin. The helmet should allow sufficient peripheral vision when secure on your head. If your helmet is too large, it may slip or move on your head while riding. This could cause your helmet to come off in an accident or obstruct your vision while riding resulting in personal injury or death. To learn to properly wear and secure your helmet, see the booklet "How to Use Your Helmet Properly" that was packed with the helmet.

The contents of this manual are subject to change without notice.

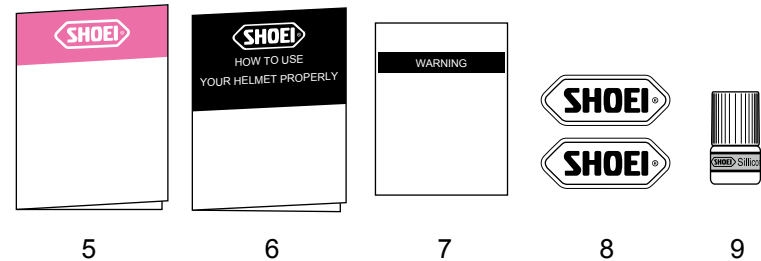
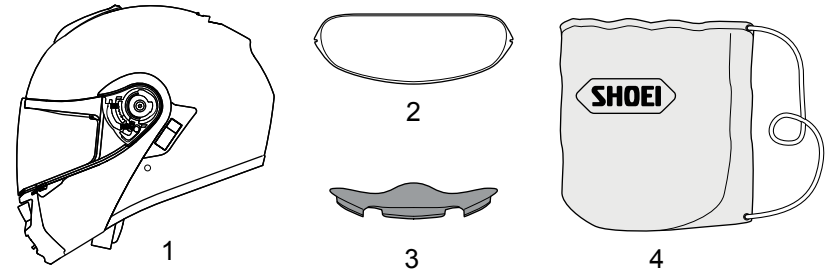
The illustrations in this manual may differ from the actual product.

The copyrights for this manual belong to SHOEI CO., LTD. Reproduction or copying of this manual without written permission is strictly prohibited.

Confirm the Packed Items

After opening the product box, please confirm that all parts and accessories are included.

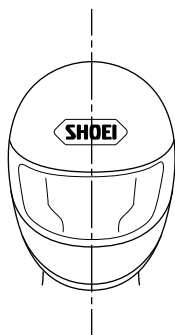
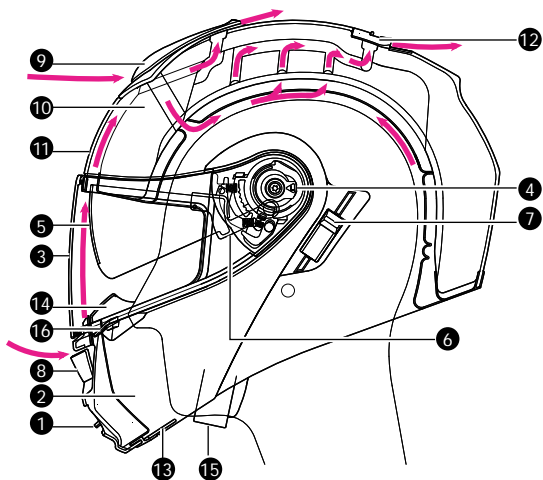
1. Helmet
2. Pinlock® fog-free lens
3. Breath Guard
4. Helmet Bag
5. Instruction Manual
6. "How to use your helmet properly"
7. Warning labels (E-3 tags)
8. SHOEI logo stickers (2)
9. Silicone Oil



We recommend that you save the box and its cushioning material in case you need to ship the product or its parts for repair. If you dispose of these materials, please follow the proper laws and regulations.

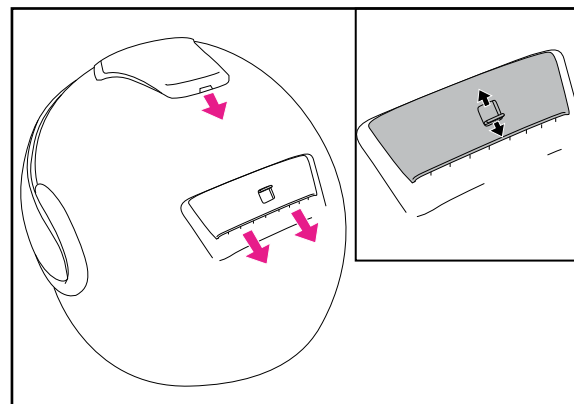
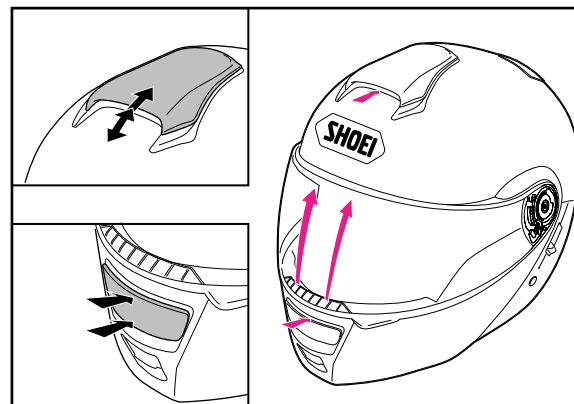
Parts Description

1. Face Cover Button
2. Face Cover
3. CNS-1 Shield / Visor
4. Shield / Visor Base
5. QSV-1 Sun Visor
6. Sun Visor Holder
7. Sun Visor Lever
8. Lower Air Intake
9. Upper Air Intake
10. Impact Absorbing Liner
11. Shell
12. Top Air Outlet
13. Chin Curtain
14. Breath Guard
15. Chinstrap
16. Shield /Visor Tab



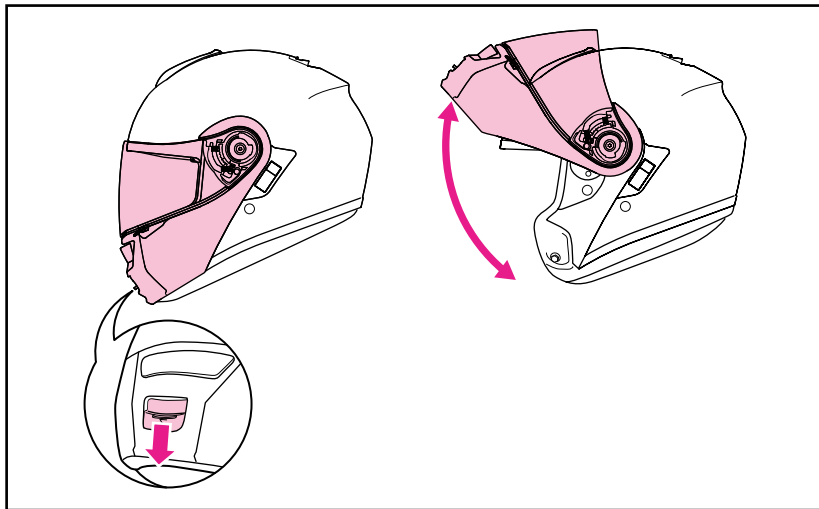
The terms "right" and "left" in this manual are from the point of view of a rider who is wearing the helmet.

Ventilation System



Opening the vents on the helmet can cause an increase in noise levels.

Opening and Closing the Face Cover



The face cover can be opened and closed with a single touch. To open the face cover, pull down on the knob in the bottom center of the face cover and release the lock. Rotate the face cover upward until you hear a click when the stopper engages. To close the face cover, gently rotate it downward until you hear a click when the face cover lock engages.

WARNING

- Do not ride your motorcycle with the face cover open!
- Do not hold the button while closing the face cover. This can cause the face cover lock to fail to engage. A face cover that is not locked may open unexpectedly during riding and lead to an accident. After closing the face cover, be sure to check that it is locked.
- Do not carry or hold the helmet by the face cover. The face cover may open, causing the helmet to drop and become damaged.
- Do not open or close the face cover by grasping the chin curtain. The chin curtain may come off.

Chin Curtain

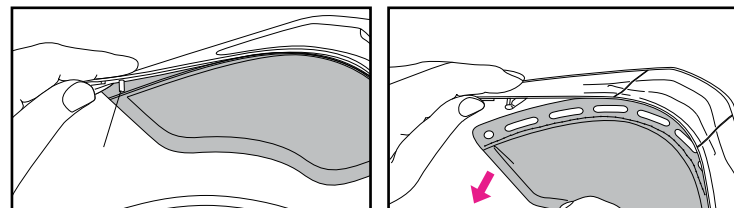
The chin curtain reduces the influx of air turbulence and wind noise into the helmet's chin area. The chin curtain can be removed by using the following procedure.

Removing the Chin Curtain

The chin curtain is pressed against the plate at the bottom edge of the face cover and fastened by 2 pins. Refer to the drawing. Lift up the face cover plate near its right and left pins, and remove the pins that pass through the chin curtain plate. Pull out the chin curtain. Remove the chin curtain on both the right and left sides.

Installing the Chin Curtain

As shown in the drawing, lift up the face cover plate (at the bottom edge of the face cover) and insert the chin curtain plate in the space created. There are pins on the interior side of the face cover plate. Insert them through the holes of the chin curtain plate. Attach the chin curtain on both the right and left sides.



WARNING

- With the chin curtain is installed, the sound from nearby vehicles will be reduced. Please be aware of this while riding.
- Do not pull the chin curtain with the pins in place. If you do, the chin curtain or face cover plate may become damaged.
- Do not carry or hold the helmet by the chin curtain. The chin curtain may come off, and the helmet may drop.

Breath Guard

The breath guard reduces fogging of the shield / visor caused by breathing.

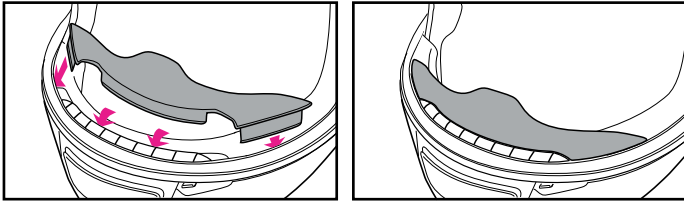
To install the breath guard, use the following procedure.

Installing the Breath Guard

As shown in the drawing, insert the breath guard in the space between the defogger ventilation and the impact absorbing liner.

Removing the Breath Guard

Pull the breath guard from the space between the defogger ventilation and the impact absorbing liner. When you pull out the breath guard, the back side of the window beading may come off. If this happens, grab the window beading between the thumb and the forefinger and return it to its location.



! Do not carry or hold the helmet by the breath guard. The breath guard may come off, causing the helmet to drop.

Ear Pads

The ear pads are designed to reduce wind noise. The ear pads can be removed. To remove or install the ear pads, see the "Removing and Installing Inner Parts" section.

! With the ear pads are installed, the sound from nearby vehicles will be reduced. Please be aware of this while riding.

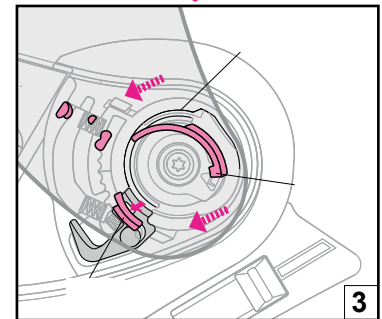
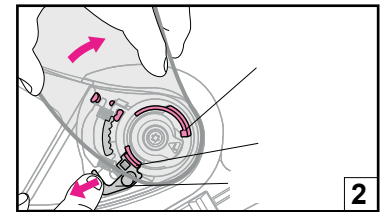
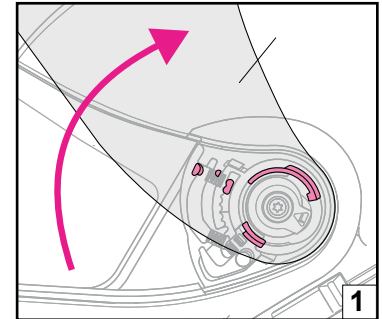
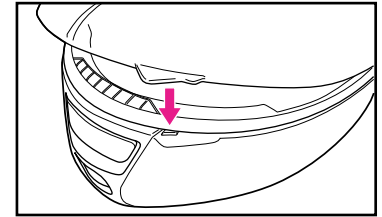
CNS-1 Shield / Visor

! Before using the shield / visor for the first time after purchase, remove the protective film from the shield / visor.

If you pull the CNS-1 Shield / Visor completely down, the shield / visor tab will clasp the hook. We recommend that you use the shield / visor in this position while riding your motorcycle.

Removing the CNS-1 Shield / Visor

1. Move the CNS-1 Shield / Visor to the fully open position (Drawing 1).
2. While pulling the trigger down, lift the shield / visor by one click (Drawing 2). This position is the "shield / visor install/remove position."
3. After the shield / visor is in the install/remove position, shield / visor hook (A) will be released. Detach hook (B) from the hook rail in the direction shown by the arrow in Drawing 3.
4. Follow the same procedure to remove the other side.

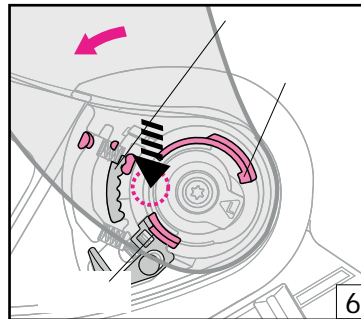
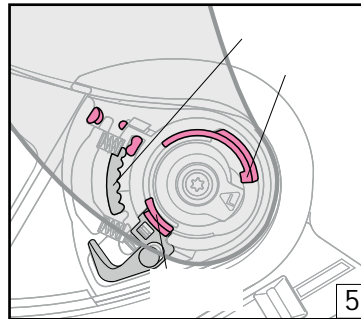
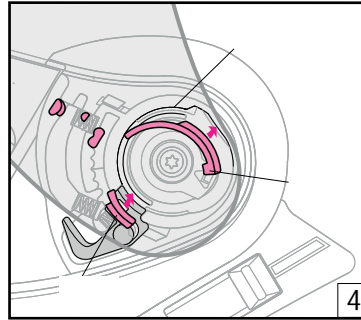


Installing the CNS-1 Shield / Visor

1. Move the CNS-1 Shield / Visor to the install/remove position described in step 2 of "Removing the CNS-1 Shield / Visor." Insert shield / visor hook (B) into the hook rail (Drawing 4).
2. While pressing the area indicated by the arrow (Drawing 6), lower the shield / visor by one click. The trigger will rise as the shield / visor clicks, and hook (A) will fit into the hook rail.
3. Follow the same procedure to install the other side.
4. Confirm that the shield / visor hook and gear fit properly into the shield / visor base.

WARNING

If the hook and gear are not securely fastened in the shield / visor base, the shield / visor may come loose while riding and an accident may unexpectedly occur. After installing the CNS-1 Shield / Visor, open and close the shield / visor a few times to confirm that the hook and gear fit securely. With the shield / visor completely closed, confirm that the shield / visor tab is clasped by the hook.



Important Notice about Handling the CNS-1 Shield / Visor

1. Dirt and scratches on the shield / visor may obstruct your view while riding and can be very dangerous! If the CNS-1 shield / visor gets dirty or scratched, stop using it immediately. Remove the shield / visor and clean or replace it.
2. The CNS-1 shield / visor should be cleaned with a solution of mild, neutral soap and water. Rinse well with pure water then wipe dry with a soft cloth. **Do not use any of the following cleaning materials: hot water over 40°C; salt water; any acidic or alkali detergent; benzine, thinner, gasoline, or other organic solvents; glass cleaner; or any cleaner containing organic solvents.** If any of these cleaners are used, the shield's / visor's chemical nature may be altered and safety may be hindered.
3. Do not ride with a shield / visor that is fogged. This may obstruct your view and can be very dangerous. If the CNS-1 shield / visor is fogged, open the lower air intake to circulate air within the helmet and remove the fog from the shield / visor.
4. Remove the protective film before using the shield / visor for the first time.
5. Do not place any sticker or tape in the shield's / visor's field of vision.

WARNING

- CNS-1 tinted shield/visor is not for sale or use in USA. If tinted shield/visor and sun visor are used together in USA, requirement of light transmission ratio specified in VESC-8* is not satisfied. Don't use tinted shield/visor to your helmet in a manner not satisfying VESC-8*. Otherwise, your vision restricted by tinted shield/visor may cause an accident and serious injury or death.

VESC-8 : Vehicle Equipment Safety Commission regulation NO.8 for motorcyclist eye protection
This standard is widely referenced and applied by the 36 states in USA with motorcyclist eye protection use law.

Pinlock® fog-free lens

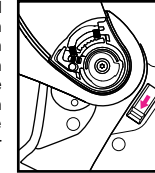
If you are using the Pinlock® fog-free lens, read the instruction manual that comes packed with it.



- Daytime use only. Never use Pinlock® fog-free lens at night.
- If the Pinlock® fog-free lens is used with a clear shield / visor, its light transmission ratio will be approximately 80%. This value does not meet the light transmission standards in the U.S. (VESC-8, 85%), Australia (AS1609, 85%), or Europe (ECE R22, 80%), so this accessory is for “daytime use only” in these jurisdictions.
- The Pinlock® fog-free lens is made of a material that is easier to scratch than the shield / visor. It should be treated with great care.
- Remove the protective film before using the Pinlock® fog-free lens.
- The Pinlock® fog-free lens demonstrates high effectiveness in stopping fog by absorbing moisture. However, if the helmet is used continuously with the lower vent in the closed position in low-temperature, high-humidity conditions, the lens can become saturated with water vapor causing streaks and fog to appear. If streaks or fog appears, it may obstruct your view and be very dangerous! In this case, open the lower air intake to circulate air within the helmet to remove the streaks and fog from the helmet.

QSV-1 Sun Visor

The QSV-1 sun visor can be opened and closed by sliding the sun visor lever on the left side of the shell. To open the sun visor, pull the lever down until it stops in the position shown in the drawing. If the sun visor is not fully open, it may slip down and close unexpectedly during riding due to vibration or other phenomena and your view may be obstructed.



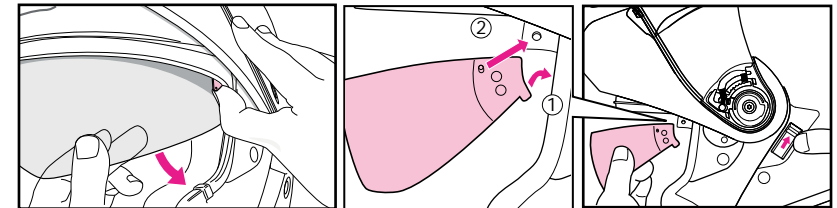
Removing the QSV-1 Sun Visor

1. Open the face cover. See “Opening and Closing the Face Cover.”
2. Lower the QSV-1 sun visor.
3. As shown in the drawing, hold the sun visor and use your fingernail to widen the space between the sun visor holder and the sun visor. Detach the sun visor by rotating it in the direction shown by the arrow.
4. Detach the other side of the sun visor using the same method, then remove the sun visor.

Installing the QSV-1 Sun Visor

1. Slide the sun visor lever to the position shown in the drawing.
2. Continue to press the lever so that the sun visor does not move. As shown in the drawing, insert the rounded part at the bottom edge of the QSV-1 sun visor into the holder’s opening. While rotating the visor in the direction shown by the arrow, press the rounded part of the sun visor into the holder until you hear it catch.
3. Follow the same installation procedure for the other side.
4. Remove any fingerprints on the sun visor by wiping with a soft, dry cloth.

Removing the QSV-1 Sun Visor



WARNING

If the sun visor is not installed properly, it may drop unexpectedly during riding and obstruct the rider’s vision. After installing the QSV-1 sun visor, raise and lower the visor several times to confirm that the protruding section of the sun visor is fit securely in the holder’s opening. Confirm that there is no space between the sun visor and the holder.

Important Notice about Handling the QSV-1 Sun Visor

1. The QSV-1 sun visor is designed to provide shade only and cannot function as a shield. Do not ride with the shield open and using only the sun visor.
2. Do not use the sun visor together with sunglasses, as this will dangerously darken your view!
3. Raise the sun visor while riding at night, through a tunnel, or any other low-light condition.
4. Dirt and scratches on the sun visor may obstruct your view while riding and can be dangerous! If the QSV-1 sun visor gets dirty or scratched, stop using it immediately. Remove the sun visor and clean or replace it.
5. The QSV-1 sun visor should be cleaned with a solution of mild neutral soap and water. Rinse well with pure water then wipe dry with a soft cloth. **Do not use any of the following cleaning materials: hot water over 40°C; salt water; any acidic or alkali detergent; benzene, thinner, gasoline, or other organic solvents; glass cleaner; or any cleaner containing organic solvents.** If any of these cleaners are used, the sun visor's chemical nature may be altered and safety may be hindered.
6. The QSV-1 sun visor has undergone anti-fogging treatment, but may develop fog in low temperatures or high humidity. In this case, open the lower air intake to circulate air or raise the sun visor.
7. Under certain storage conditions, humidity may cause the outer surface of the sun visor to become white. If this happens, take a soft, dry cloth like one for cleaning eyeglasses and wipe the sun visor to restore it to its original condition.
8. Only raise or lower the sun visor by using the lever. Never raise or lower the sun visor directly with your hands. This may damage the sun visor's raising and lowering mechanism.
9. Do not attach any stickers or tape on the QSV-1 sun visor. They may obstruct your view.

Removing and Installing the Face Cover

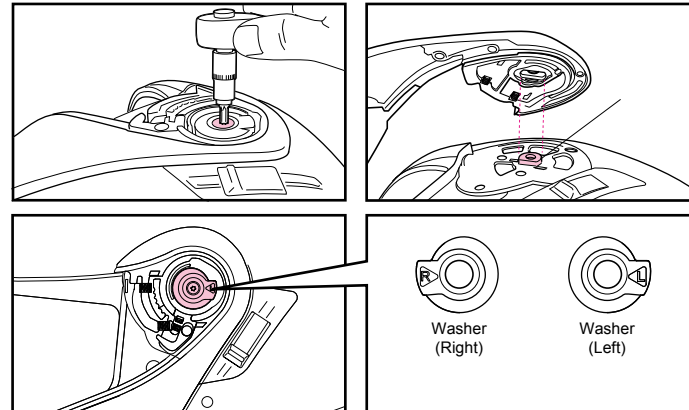
The face cover can be removed to perform maintenance.

Removing the Face Cover

First, remove the shield / visor, referring to "Removing the CNS-1 Shield / Visor." Close the face cover completely. With the lock engaged, use a T20 Torx® screwdriver to remove the right and left face cover screws. Next, remove the right and left washers and press the face cover button to release the lock. Remove the face cover.

Installing the Face Cover

Place the face cover on the helmet in the fully closed position and lock it. Locate the right and left washers and fit them on the bosses on the base of the face cover. Lightly fasten the face cover screws. Then, while pressing the face cover against the helmet so that no space appears between the face cover and the shell, firmly tighten the face cover screws. Install the shield / visor, referring to "Installing the CNS-1 shield / visor."



* Torx® is a registered trademark of Acument Intellectual Properties, LLC.

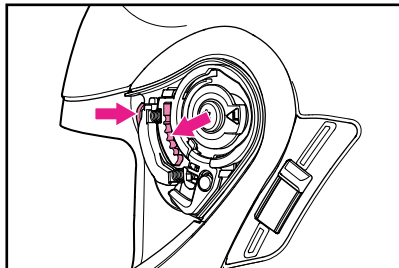
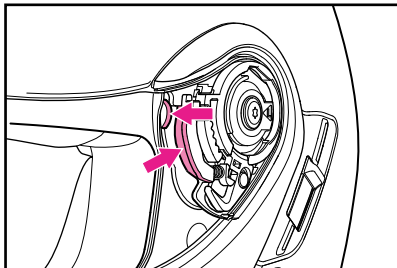


- Always put the face cover in the fully closed position before installing or removing.
- When tightening the face cover screws always hold the T20 Torx®* screwdriver directly vertical, check for even contact with the screw head, and turn it carefully. Only use a non-electric T20 hex bit lobular screwdriver or you may break the screws.
- Always use NEOTEC genuine parts if you replace the screws.
- Over-tightening may cause the screws to break (recommended tightening torque: 200cN-m or approximately 20 kgf-cm).
- After installation, be sure to check that the face cover can lock. If the cover does not lock, it may come open unexpectedly during riding.
- Before you use the helmet, check that the face cover screws are securely fastened. The face cover screws should be checked periodically. Re-tightened any loose screws.
- After replacing the face cover, close the shield / visor and check that the top of the shield / visor and the window beading fit tightly. If there is a gap here, it may cause air turbulence or wind noise. If this happens, remove the face cover and reattach it so that the shield / visor top and window beading fit snugly.

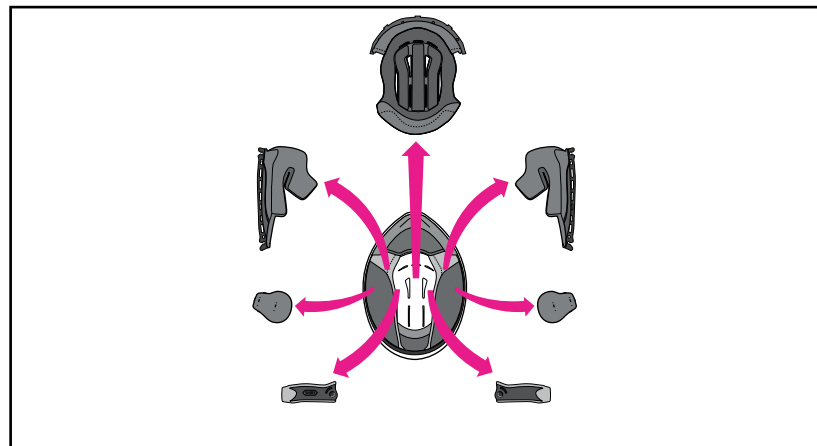
* Torx® is a registered trademark of Acument Intellectual Properties, LLC.

Applying Silicone Oil

Apply the enclosed silicone oil to lubricate the helmet's moving parts, such as the face cover and shield / visor pivot points. First, remove any dirt or dust, then apply a small amount of oil to the designated part as per drawing. Wipe away any excess oil. Check for adequate lubrication regularly.



Replacing Interior Parts



In the NEOTEC, the center pad, the right and left cheek pads and chinstrap covers, and the ear pads can be removed for washing. You can also adjust the feel of your helmet by switching to the optional pads. Look at the list and drawing of interior parts and check whether the parts are installed or removed. Be sure to always fix the center pad, cheek pads, and chinstrap covers prior to riding.

If necessary, use the following table to order the proper interior parts to adjust the fit of your helmet.

- The same cheek pads can be used with all helmet sizes. For the M size helmet example, choose cheek pad size 31 if you want a looser fit and size 39 for a firmer fit (both are optional parts).
- Center pads will vary by model size. Confirm the size of your helmet prior to making a purchase.

		XS	S	M	L	XL	XXL
Center Pads/ Bonnets	Optional (firm fit)/Optionnel (plus ferme)	XS13	S13	M13	L13	XL13	XL9
	Standard/Standard	XS9	S9	M9	L9	XL9	XL5
	Optional (loose fit)/Optionnel (plus large)	XS5	S5	M5	L5	XL5	N/A
Cheek Pads/ Mousses de joues	Optional (firm fit)/Optionnel (plus ferme)	39	39	39	39	39	35
	Standard/Standard	35	35	35	35	35	31
	Optional (loose fit)/Optionnel (plus large)	31	31	31	31	31	N/A

Removing and Installing Interior Parts

Use the following procedures to remove or install the interior parts. Open the face cover completely when removing or installing the interior parts.

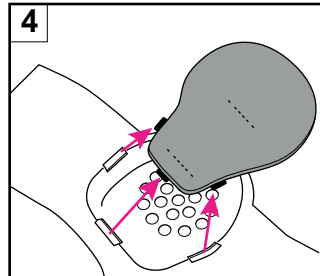
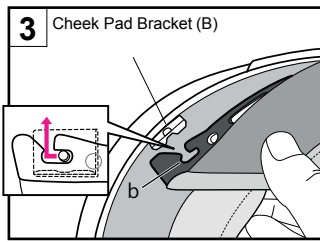
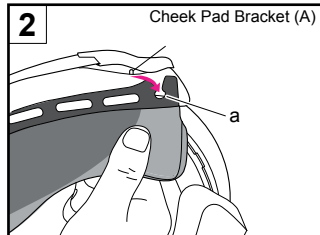
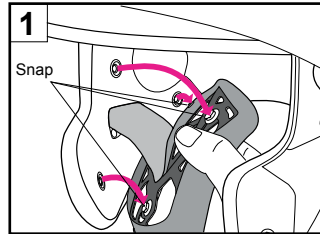
Removing Interior Parts

1. Removing the Cheek Pads

To remove the cheek pad, unfasten the 3 snaps and pull the notch (a) from the cheek pad bracket (A). Next, pull the notch (b) from the cheek pad bracket (B). Do not pull it hard. Be sure to pull the front notch (a) out first. If you pull out the rear notch (b) before pulling out notch (a), the plate may be damaged.

2. Removing the Ear Pads

Unfasten the 3 clasps on the plate from the cheek base, as shown in the drawing. Remove the ear pad. Remove the other ear pad in the same manner.

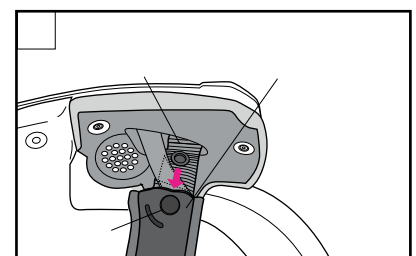
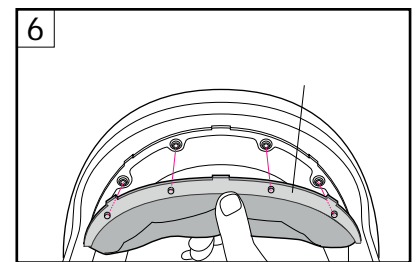
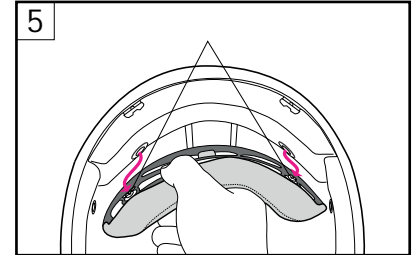


3. Removing the Center Pad

Unfasten the 2 snaps in the back (Drawing 5) and the 4 snaps in the front (Drawing 6). Remove the center pad.

4. Removing the Chinstrap Covers

Remove the cheek pad then unfasten the chinstrap cover snap. Remove the cover from the chinstrap. Remove the other chinstrap cover in the same manner.



Installing Interior Parts

1. Installing the Chinstrap Covers

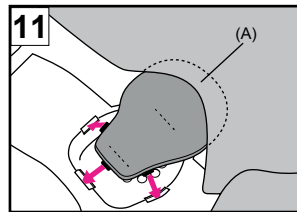
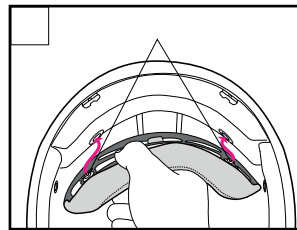
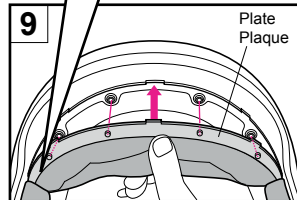
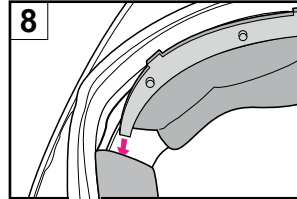
The chinstrap covers have different shapes on the right and left sides of the helmet. Referring to the drawing, identify the right and left sides. Pass the chinstrap through the cover and fasten the snap until it clicks in place.

2. Installing the Center Pad

Insert the right and left sides of the front plate. Fit the plate's rounded section in the notch in the center of the center pad bracket that is attached to the helmet. Fit the center pad in its installed position (Drawing 8). Click the 4 snaps in place (Drawing 9). Click the 2 snaps found on the back plate in place (Drawing 10).

3. Installing the Ear Pads

The right and left ear pads are used together. Press ear pad section (A) between the center pad and the impact absorbing liner (see Drawing). Insert the 3 clasps on the plate in the notches of the cheek base. Fix the ear pad in place. Install the other ear pad in the same manner.



4. To install the Cheek Pads

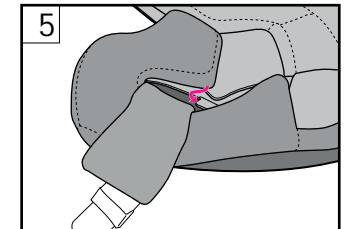
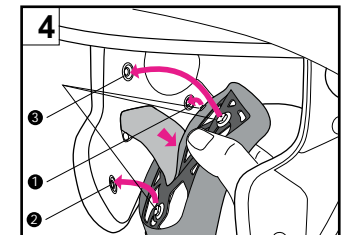
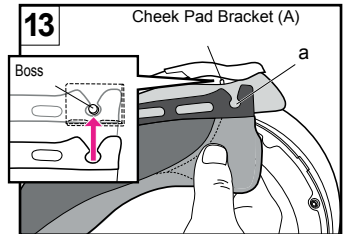
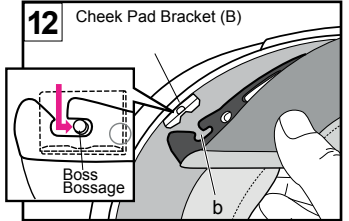
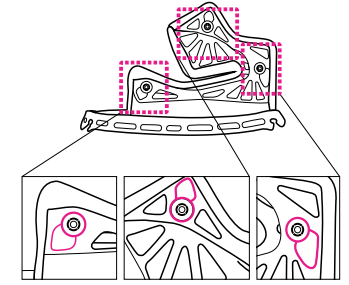
Before installing the cheek pads, check that the 3 snaps are in their proper positions shown in the drawing.

Identify the right and left sides of the cheek pad and insert the rear section of the cheek pad plate in the space between the shell and the impact absorbing liner. Fit the plate notch (b) securely in the boss of the cheek pad bracket (B) as shown in Drawing 12, and slide it toward the back of the helmet (Drawing 12).

Take notch (a) in the front of the plate and fit it securely into the boss of the cheek pad bracket (A) as shown in the Drawing 13. Be sure to slide the plate toward the back of the helmet when you insert the rear section (Drawing 12), otherwise the notch (a) may not fit to the boss.

After the plate is inserted, pass the chinstrap through the hollow section of the cheek pad (Drawing 14). Fasten the snaps in (1) to (3) order, by pressing the head of the snaps firmly from the pad side until they click in place. Lastly, press the front edge of the pad as shown in the drawing and fit the cheek pad plate securely into the boss of the cheek base.

Install the other cheek pad in the same manner.



Important Notice about Handling Interior Parts

1. When attaching or detaching a hook, you should hold it near the hooked area and treat it carefully. Insert the hook firmly until you hear it click.
2. You can clean the inner parts by hand washing them or by washing them in a washing machine after placing them in a laundry net. Please treat them carefully when washing. Use lukewarm water. Gently squeeze the parts with a dry towel, then remove them and dry them in the shade. To prevent damage to the plastic areas of the interior parts, do not wring them strongly and do not fold or bend the plastic areas. Take special care if you are using a washing machine. Do not dry the interior parts with a clothes dryer, blow dryer, or any other type of mechanical dryer, as heat can damage the material. The impact absorbing liner (polystyrene foam section) should be wet with a soft cloth dipped in a solution of mild neutral soap and water and then wiped. Allow time for the impact absorbing liner to dry in the shade. Do not dry the impact absorbing liner in the sunlight or use any type of mechanical dryer, as the impact absorbing liner is extremely sensitive to heat. If the impact absorbing liner is exposed to high heat of any kind, contact your dealer or SHOEI directly for a safety evaluation. To prevent damage, do not use any of the following cleaning materials: hot water over 40°C; salt water; any acidic or alkali detergent; benzine, thinner, gasoline, or other organic solvents; glass cleaner; or any cleaner containing organic solvents.

WARNING

- Before use, check that the shield / visor fasteners and gear are fit firmly.
- Be sure to always wear the center pad, cheek pads, and chinstrap covers when using the helmet.
- When cleaning and caring for the helmet and shield / visor, do not use any of the following cleaning materials: hot water over 40°C; salt water; any acidic or alkali detergent; benzine, thinner, gasoline, or other organic solvents; glass cleaner; or any cleaner containing organic solvents. If any of these cleaners are used, the helmet's chemical nature may be altered and safety may be hindered.
- If insects become stuck to the helmet during riding and are left in place, the helmet surface may be corroded. They should be removed promptly.
- Be sure to use SHOEI genuine parts when replacing the shield / visor, sun visor, or inner parts.

Parts List

These optional parts are available for repair or replacement.

To replace the parts, read the instruction manual that comes packed with the parts.

- CNS-1 Shield / Visor
- QSV-1 Sun Visor
- Pinlock® fog-free lens
- Chin Curtain
- Breath Guard
- Face Cover
- Face Cover Screws (2)
- Face Cover Washers, right and left
- Upper Air Intake
- Top Air Outlet
- Center Pad (XS13, XS9, XS5, S13, S9, S5, M13, M9, M5, L13, L9, L5, XL13, XL9, XL5)
- Cheek Pads, right and left (39, 35, 31)
- Chinstrap Covers, right and left
- Ear Pads (2)