



# Race-R PRO Race-R PRO Carbon



**SHARK**

## ANATOMY OF THE HELMET

---



### Race-R PRO Race-R PRO Carbon

- |                      |                    |
|----------------------|--------------------|
| 1 visor              | 6 rear ventilation |
| 2 front ventilation  | 7 base seal        |
| 3 spoiler            | 8 Visor seal       |
| 4 top ventilation    | 9 front venturi    |
| 5 demist ventilation | 10 lateral venturi |
|                      | 11 mask            |

Thank you for choosing a Race-R PRO helmet. The Race-R PRO is a top-quality helmet that is ideal for use on racing track, urban and extra urban area. The helmet complies with international standards but does not purport to guarantee total protection in all circumstances.

Make sure you carefully read all of the following recommendations before using the helmet. Just because you are wearing a helmet does not mean you should neglect driving carefully.

**Standard :** This SHARK Race-R PRO helmet has been approved and conforms to the ECE R 22/05 standard. It therefore meets the requirements imposed on all the countries that recognise this standard in their territory and for racing.

**Warning :** for French traffic, the Highway Code requires safety reflectors (supplied separately in a packet) to be fitted in accordance with the enclosed plan. In the United States and Canada, specific regulations require that helmets that only have ECE approval cannot be used in these territories unless they have acquired additional DOT FMVSS 218 approval.

# A HELMET IN YOUR SIZE

## A helmet in your size :

For a helmet to provide effective protection while remaining comfortable, it has to be perfectly suited to its user. Choosing the correct size is essential.

- Measure the circumference of your head with a tape measure, positioning it about 2 cm above your eyebrows : this is where your head is the largest. Once you have taken this measurement, compare it to the table of sizes. Try the size of Race-R PRO helmet closest to the measurement obtained, starting with the size smaller than your head measurement. If you feel that the contact is too hard, try the size larger.

Your head should be held quite firmly but you should feel no discomfort.

- Tests for size must be carried out with the chin strap tightened (please refer to the section on page 16-17 for instructions on tightening the chin strap). Check that you have good vertical and horizontal visibility.

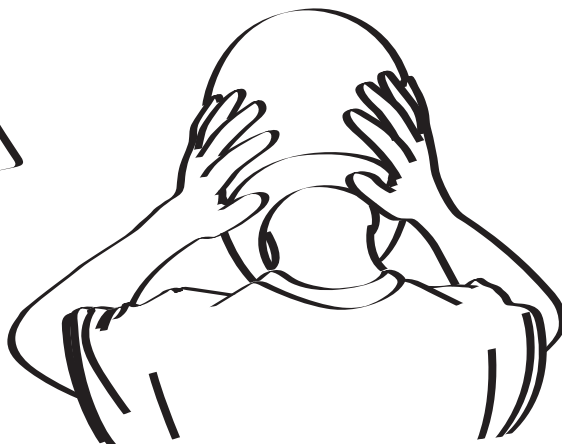
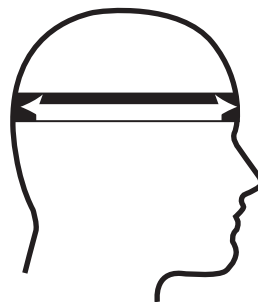
- Check that your head can carry out all of these movements without any particular discomfort.
- Check that when the chin strap is tightened, the helmet cannot be removed from your head when you try to move it forward by force.

If the helmet comes off or nearly comes off, it is too big or else the chin strap is not correctly tightened. Keep trying on helmets until you find the ideal size.

**WARNING :** do not lend your helmet, even for a short journey, if its size is not perfectly suitable. For each use of your helmet, it is absolutely necessary to make sure that the helmet is well positioned on your head, and that the chin strap is properly adjusted, following the instructions of this manual.

## Sizing (cm)

XS	53/54
S	55/56
M	57/58
L	59/60
XL	61/62



## ADVICE FOR USE

---



### **Advice for use**

#### **1/ PUTTING ON THE HELMET**

Once the chin strap is released, you have to take hold of the two sections by the buckles and hold them slightly apart to facilitate the passage of your head. While carrying out this movement, you are advised to keep the two sections of the chin strap apart with your thumbs so that they are properly positioned.

Position the protective parts of the chin strap buckle correctly and fasten it in accordance with the recommendations that are appropriate to the versions and country (see page 13-17).

Check that the tension and therefore the positioning of the helmet are correct for all positions.

#### **2/ REMOVING THE HELMET**

Release the chin strap ; hold the two sections slightly apart as for putting the helmet on and remove the helmet.

## CHIN STRAP

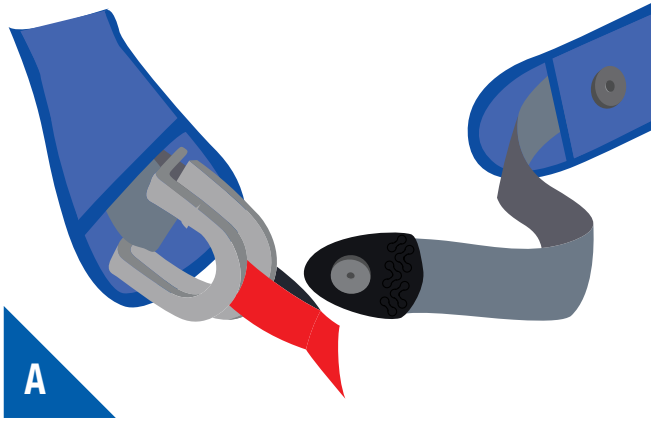


### CHIN STRAP

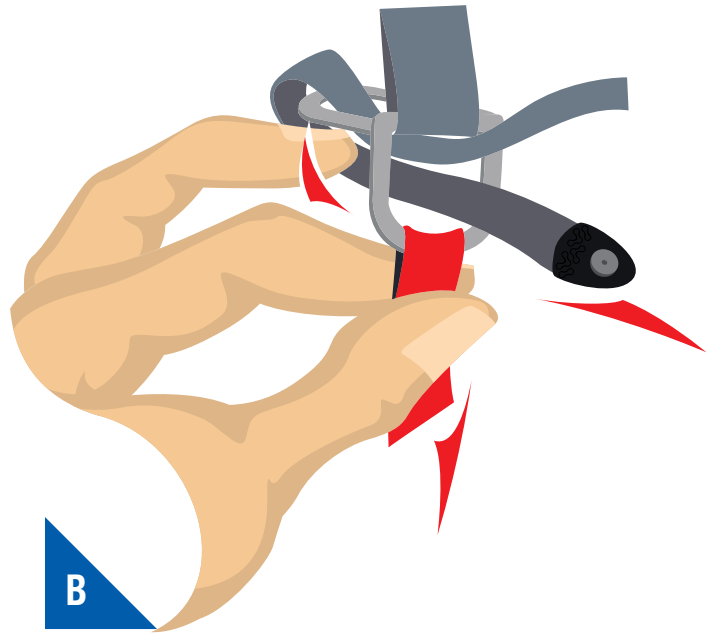
The belt must correctly fit under the chin to ensure the tight fitting of the helmet, without discomfort or pain. **Warning** : never ride with the chin strap loose or insufficiently tightened. Even though the interior padding gives you the impression of being held, your helmet risks coming off in a fall. Never apply lubricating or acid products or grease or solvents to the chin strap buckle parts.

Your helmet Race-R PRO has a magnetic clasp to easily fix the free stalk of the belt. The magnetic receptacle is placed on the protection of the belt, free stalk side, This protection of belt is adjustable and removable (see textile chapter). It is recommended to adjust, the position of the belt protection before use. This adjustment is controlled by means of hook and loop fastener (see photos). Very important, the magnetic clasp does not ensure maintaining of the helmet. It holds only the free stalk of the belt For your safety, it is necessary to fasten. Your belt by strictly following the instructions below : (see page 16-17).

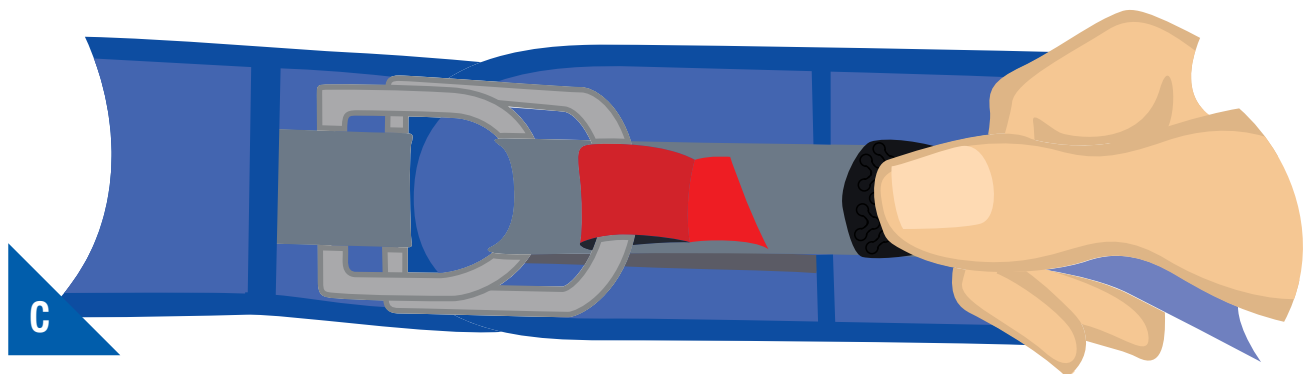
## CHIN STRAP



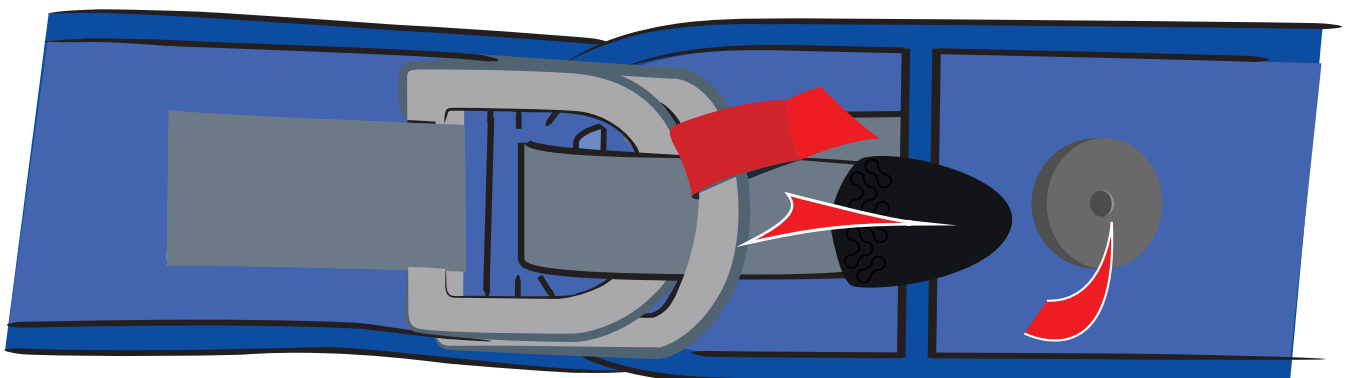
**A** - Slide the long part of the chin strap through the two D rings, positioning the comfort pad correctly between the chin strap and your neck.



**B** - Then bring the end of the chin strap back through the lower of the two D rings as shown in the diagram.



**C** - Pull the strap until you feel resistance from the strap and it is held in place under your chin without being too tight, so that you have no difficulty in breathing.



## VISOR

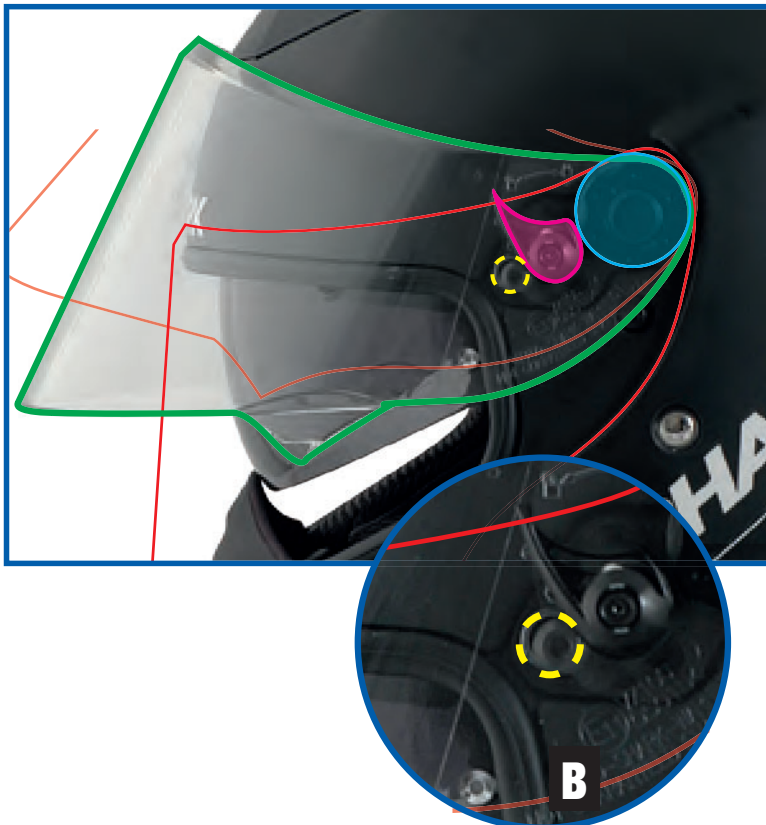


- 1** - Visor lock
- 2** - Visor rotation axis
- 3** - Under plate screw
- 4** - Visor lock cam roll

### VISOR

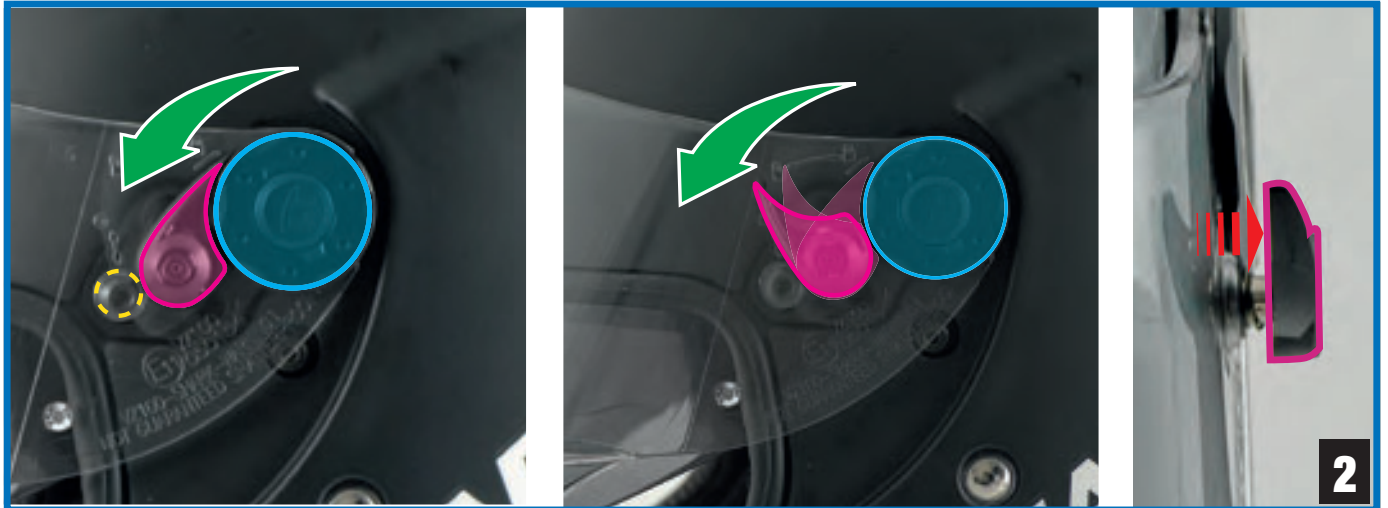
The visor of your helmet Race-R PRO is the result of the research and developments enabling you to benefit from an optical quality visor (optical class 1) and safe of very high level. The external surface has been anti scratch treated to extend of use of your visor. The internal surface has an exclusive anti fog treatment, reactive to be the most efficient. It is therefore recommended to regularly maintain your visor.

### VISOR REMOVAL



- 1** - Partially open the visor in intermediate position (A), in order to align the visor lock(1) between the visor rotation axis(2) and the under plate screw(3) (as in detail (B).]

## VISOR



**2** - Rotate the visor locks a quarter turn toward the front of the helmet. The lock cams rolls are then released from there grooves.



**3** - Pull out the visor from the rotation axis.

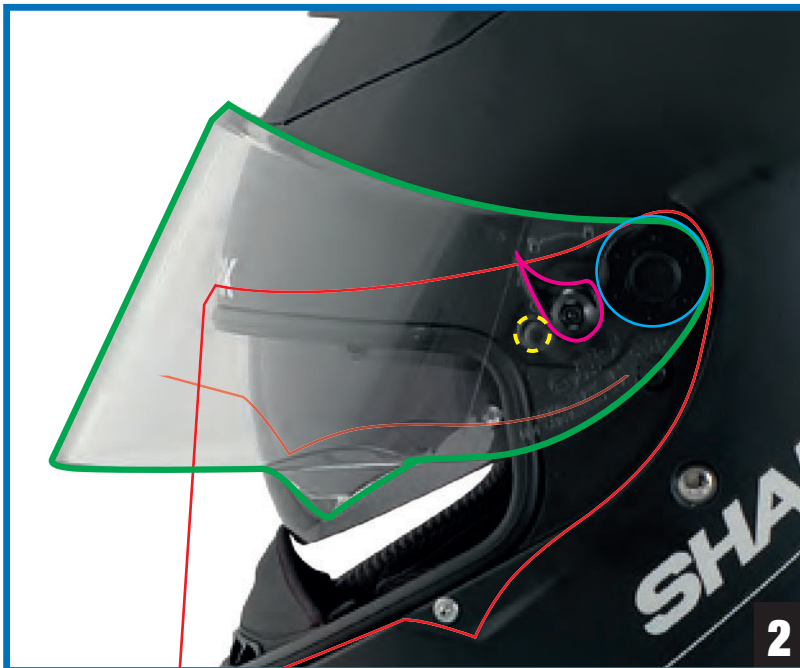


# VISOR

## VISOR ASSEMBLY

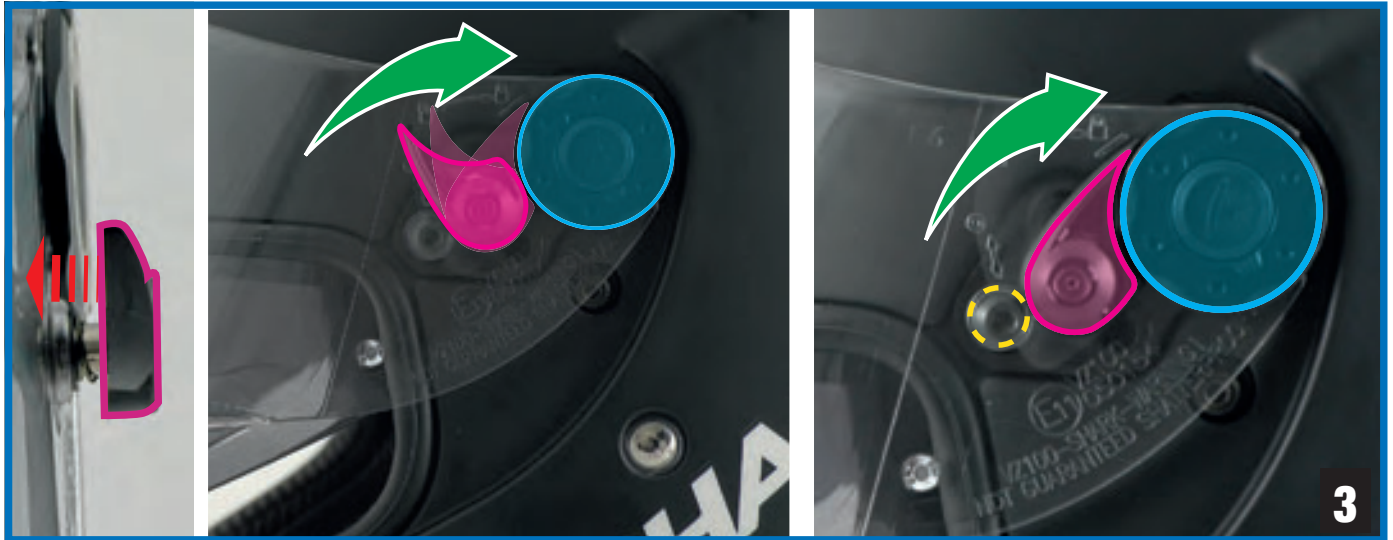


**1** - Insert the visor in its rotation axis and push it backward until clipping.



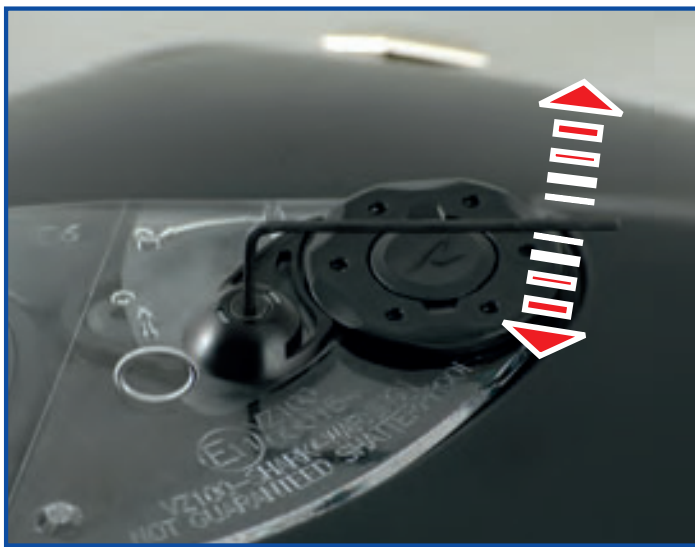
**2** - Adjust the visor in intermediate position.

## VISOR



**3** - Press on the blocker to cling it on the visor, then turn it backward a quarter turn to bring it against the rotation axis in initial position. Repeat the operation on the other side.

**DO NOT FORCE . CHECK THE MOVEMENT OF THE VISOR BEFORE USING OF THE HELMET.**



### 1. **Adjustment of the friction force :**

The 1.5mm six sides key enables the adjustment of the friction force of your visor. (see photo)

### 2. **Adjustment of visor sealing :**

Your helmet has been carefully adjusted in factory. You should better not modify this adjustment ; however the SHARK patent rotation system gives the possibility to adjust the visor. But we recommend you to contact your retailer to make this operation.

**Warning :** For your safety, do not ride with a visor that does not guarantee you a perfect visibility.

**Warning :** If your visor after a period of use, does not guarantee you an excellent visibility, it is absolutely necessary to change it.

## VISOR

---

### 3. Tear off :

Your Race-R PRO and Race-R PRO Carbon can be equipped with tear off. Warning, the tear off must be used only on closed racing tracks.

The visor of the Race-R PRO and Race-R PRO Carbon is designed to support the tear off. This requires drilling the housing of the tear off supports, with a hand drill or an auto drilling screw. The tear off supports and the screws are supplied in your tear off kit.



- Assemble : The supports are mounted on eccentrics, swing them to have them closer.
- Place the tear off on a clean visor (see photo), once the tear off are positioned on their supports, tension them by exerting a rotation. Note that the bad positioning of the tear off can affect your vision and cause risk of accidents.

# TEXTILE PARTS

## THE TEXTILE PARTS

The textile and foam parts providing com-fort to the Race-R PRO make it easy for you to appreciate the performance of your helmet to the best.

The parts in contact with the skin are made in a fabric that is guaranteed to feel pleasant, to absorb perspiration well and to resist wear satisfactorily. We treat surfaces to limit the risk of mould and bacteria.

**Warning :** although they are selected for their quality of resistance and satisfactory wear, all the interior padding is subject to normal wear depending on use and care and maintenance, the length of use and also the degree of acidity of your perspiration. If you note any wear, we advise you to replace the interior padding in order to keep your helmet perfectly clean and comfortable. Your SHARK supplier can propose you with replacement parts and also offer you cheek pads of different thicknesses and densities, should the standard selection not correspond to the contours of your face.

## UNMOUNTING



## UNMOUNTING

**1. Neck protective :** Pull the neck protective ; remove the support piece from the neck protective by pulling the front (wind protection mask) toward outside, do the same operation for the rear.

**2. Cheeks :** Unmount the cheek pads of their base by pulling to unclip the snaps

# TEXTILE PARTS

## UNMOUNTING

and separate the «hook and loop fastener»

**3. Cap lining :** Unclip the snaps at the rear of the cap. Unclip the front cap from its support by pulling backward. You can take off the cap.

**4. Belt protections :** The protective covers are attached to the belt by a hook and loop fastener, just pull the tab «removable bag» of the belt toward outside of the helmet.

**5. SHARK Race-R PRO** includes 2 pieces of ear pad mounted by hook and loop fastener inside of the cheeks at the ear level. These pieces are removable to allow additional room on the ears for audio system. **Attention :** When reassembling this item, you need to reposition the toggle in the passage of the belt.



# TEXTILE PARTS

## INSTALLATION



### INSTALLATION

**1. Cap fabric :** Slide the front in its support. The clips must be correctly locked. Clip the 2 snaps holding the rear of the cap.

**2. Cheeks :** Place the belt in the central of cheek pads, clip the cheek pads. Well apply the top part of cheek pads at the level of vision field (hook and loop fastener).

**IMPORTANT :** Check the belt does not present any folds under the cheek pads.

**3. Neck protective :** Insert the maximum of hard rear part between the shell and polystyrene.

**Attention :** not to deteriorate the polystyrene. Do the same for the front. Check the proper balancing. Slide the frame under the joints (see photos.)

**4. Belt protection :** Reposition the belt protection ; be careful to fix them to the good length to adjust the magnetic clasp. Attention not to reverse the side of belt protection (see photos).

# CLEANING

---

## **CLEANING THE INTERIOR :**

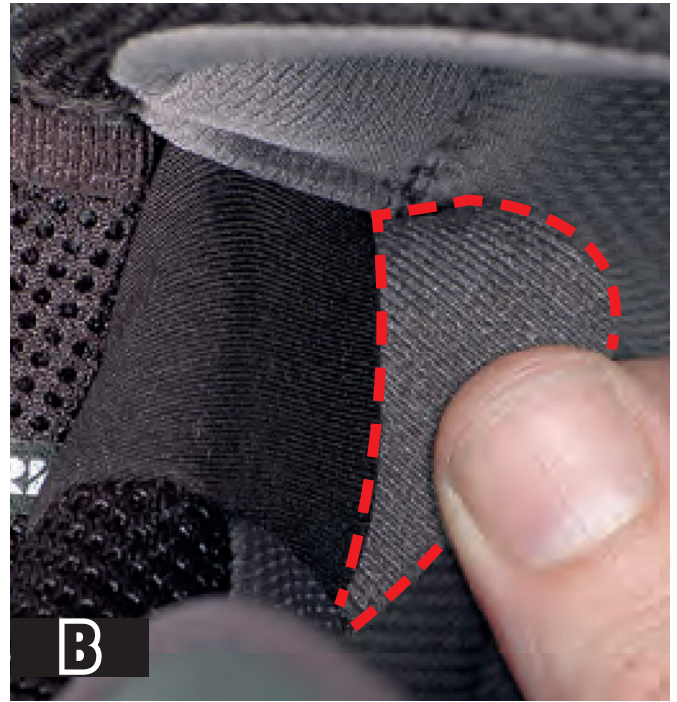
The interior textile parts are washable ; it is important to follow the instructions below scrupulously to avoid damaging them :

The cheek pads and head section must be hand washed in warm, soapy water (about 30°). Do not use aggressive detergents but either a product for delicate materials in low dilution or household soap.

It is essential to dry textile and foam parts completely before using them. They must be dried at room tempera-ture. Never iron textile parts.

For parts with a leather appearance or textiles attached to safety elements, use a slightly damp sponge or cloth and household soap and rinse with clean water. Avoid allowing too much water to come into contact with polystyrene parts. It is essential to ensure that all interior parts are perfectly dry before using the helmet.

## EASY FIT



### EASY FIT

Your helmet Race-R PRO/Race-R PRO Carbon has been designed to provide additional comfort for eyeglasses wearers with the SHARK EASY FIT.

The 2 cheeks are made with inserted comfort foam that can be removed to provide the passage to the glasses arms. These pockets may contain (or not) specific comfort foam. The Race-R PRO / Race-R PRO Carbon is delivered without this foam to facilitate the insertion of the branches of glasses.

If you do not wear glasses, and if you wish to have a stronger fit of the helmet at temples area, you can insert those foams (which are supplied in the pocket containing the manual of the helmet) into the pockets of EASY-FIT system. To mount or remove the foams, follow



the operations explained in the pictures (pictures A-B-C). Use or not use the EASY-FIT comfort foam do not influence on the protective performances of your helmet.



# SHARKTOOTH

---



**SHARK**  
HELMETS  
**SUPERTOOTH**



## SHARKTOOTH

**PRE EQUIPMENT AUDIO :** Your helmet SHARK Race-R PRO is designed to be equipped with audio system SHARKTOOTH. This very efficient communication system can be mounted in the Race-R PRO very easily, while maintaining the good safety performances of your helmet well within the limits of the valid standards. **WARNING :** SHARK disclaims all liability in case of adaptation into the Race-R PRO of a communication system other than the SHARKTOOTH.



# MASK



## Small mask (summer)

**Assembly :** The small mask is fixed to the helmet by a bayonet system. Insert the 3 pins of box support of the helmet into the oblong holes of the mask. To lock it, slide the small mask it following the arrow direction (see photo).

**Removal :** Perform a translation in the inverse direction of the one of the assembly, then extract the mask of the support pins.

## Big mask (winter/racing)

**Assembly :** In order to use the anti mist mask “racing”, remove first the origin small mask. Insert the mask on the 3 support pins. Put the tubes (A) into their housings (B). 2 air extractors (B) ensure a perfect renewal of the air, even in the most extreme conditions.

## CHIN COVER



Your Race-R PRO is equipped with an exclusive anti turbulence chin cover in two parts, which will isolate you at best from noise, aerodynamic turbulence, and cold.

A/ First, a fixed part made of neoprene fabric provides a first protection. B/ A second adjustable part provides a maximum isolation.

For maximum protection, release the chin cover at maximum toward the back of the helmet, by releasing the cord blocker, which will allow the chin cover to deploy.

To fold back the chin cover, grab the « Red » tab and pull it in order to reduce the surface of the chin cover, and then block the cord with the blocker, near the chin cover.

### **Warning:**

1/ For easy fitting and removing of the helmet, it is recommended to fold back the chin cover at the maximum.

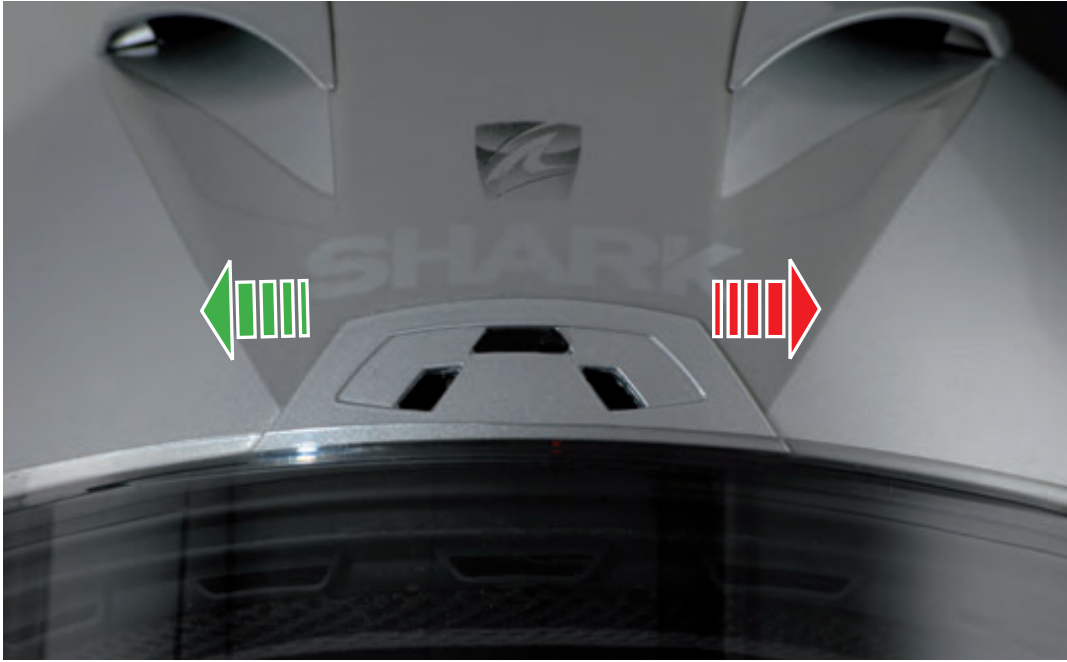
2/ For your comfort, we recommend to slide the whole cord / stopper between the 2 parts of the chin cover.

## CHIN COVER



## VENTILATION

---



**Front Ventilation :** This front air inlet is set in open or closed position by sliding the cursor from side to side. (See photo)



**Top Ventilation :** These two top ventilations; left side and right side, optimize the air circulation on the surface of the head. When the cursors are in forward position, the ventilations are closed. When the cursors are in backward position, the ventilations are open.

## VENTILATION

---



### **Low Ventilation :** **2 fonctions :**

- It ensures the air low on the internal surface of the visor to limit the risk of mist. This function is ensured permanently with the flap open.
- It also ensures an optimized air inlet to your face

This ventilation has an opening with 2 different positions to adjust depending on your speed and aerodynamics of your 2 wheels. (See diagram).

## VENTILATION



An anti pollution filter, removable and with 3 positions, enables the manage went of the air flow.

- Position 0 : maximum air flow (without filter)
- Position 1: air flow filtered
- Position 2 : air flow toward the mouth closed (air directed only toward the visor)

It is recommended to regularly change your filter especially if you ride in a polluted environment. The anti-pollution filters spares are available at your dealer.



## LEGAL INFORMATION

---

**Legal information :** this helmet was specifically designed for motorcycle use. It is not to be subjected to any technical modification. In order to offer an adequate level of protection, this helmet has to be properly adjusted and securely fitted. Any helmet which has been subjected to a severe impact must be replaced.

**Caution :** Do not apply any paint, stickers, petrol or any other solvent to this helmet. Only the visors, which have been approved N° 050154 and marketed under SHARK's reference VZ100 can be used with this helmet.

This visor is made of injected polycarbonate. To keep the good optical quality of the visor and the coatings do not use any solvent, petrol, abrasive paste or similar products for cleaning. We advise to use a soft rag with cool water and mild soap. Visors printed "DAYTIME USE ONLY" must not be used at night or in poor visibility conditions.