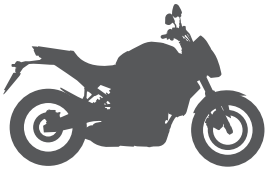


PIN SYSTEM INSTALLATION



Motorcycle

1 REF. 262057 M5	2 REF. 304084 M5 x 35 DIN 913	3 REF. 260730 Ø8 x Ø5,5 x 5
<p>x3</p>	<p>x3</p>	<p>x3</p>

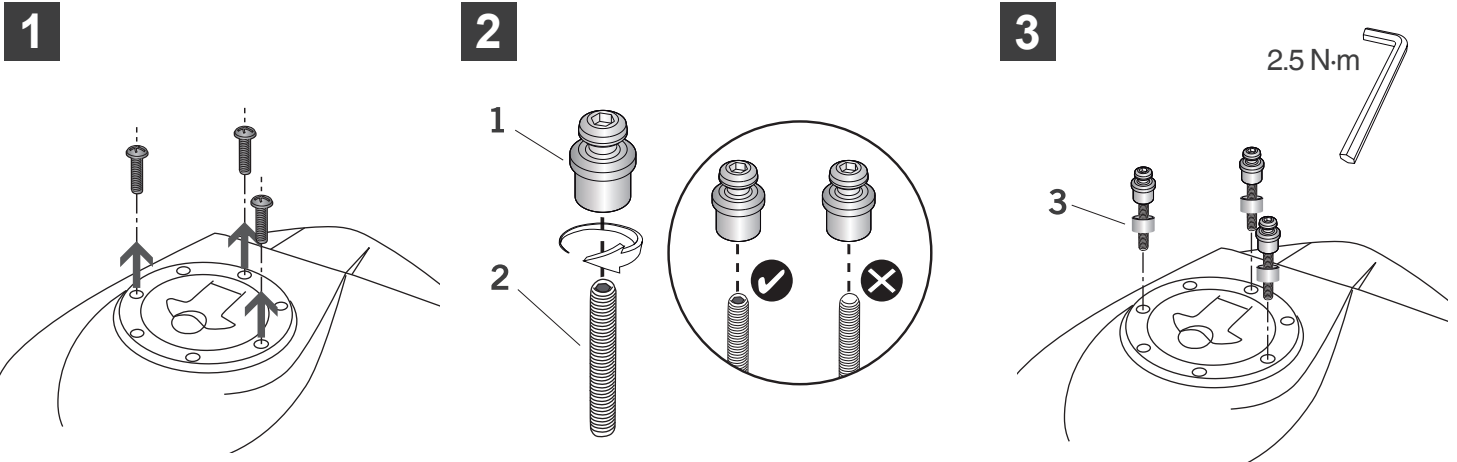
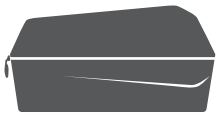
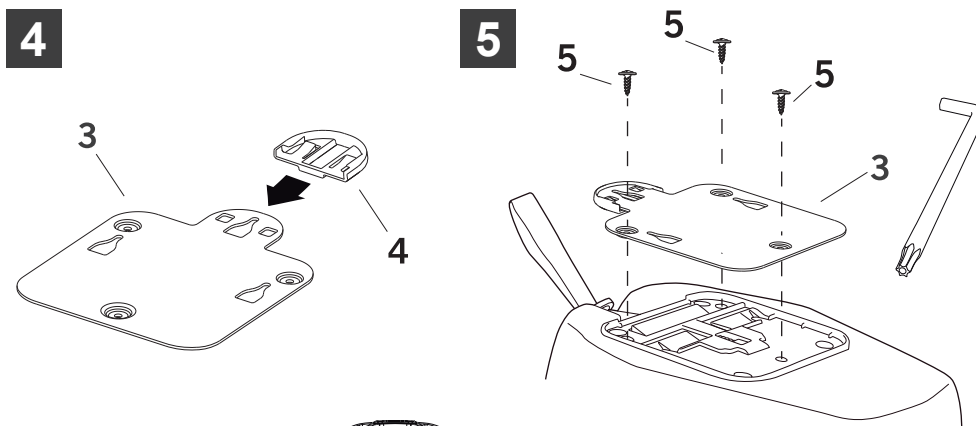


PLATE INSTALLATION

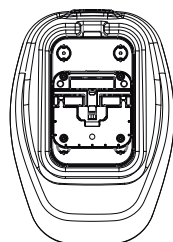


Tank Bag

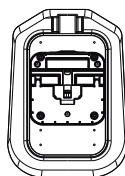
3 REF. 20116N	4 REF. 262100	5 REF. 304208
<p>x1</p>	<p>x1</p>	<p>Torx 20 Ø 4 x 16 x3</p>



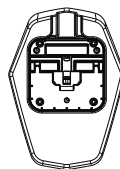
Check your bag's manual before the installation of the fitting plate.
Always use the security strap.



E16P



E10P



E04P