

SH26

SH29

SH33



1. RACK D1B29PA

(GB) Fig. A: (*) Place the TOP CASE bottom rack (1) in the assembly position(*) on the motorcycle original packet-holder, fit the anchoring flanges (2) under the most suitable tubes or supports and secure using the screws (3), the rectangular washers(4), the flanges (2), the washers (5) and the nuts (6). Fig. B on the SHAD anchoring: Situate the bottom rack of the TOP CASE (1) in the assembly position, remove the fastening clips (2), fasten with screws (7), the rectangular washers (4), the washers (5) and the nuts (6). Tighten all the screws and nuts.

Fig. A

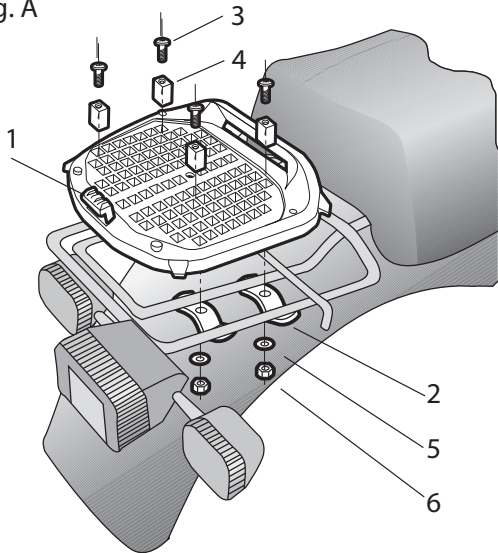
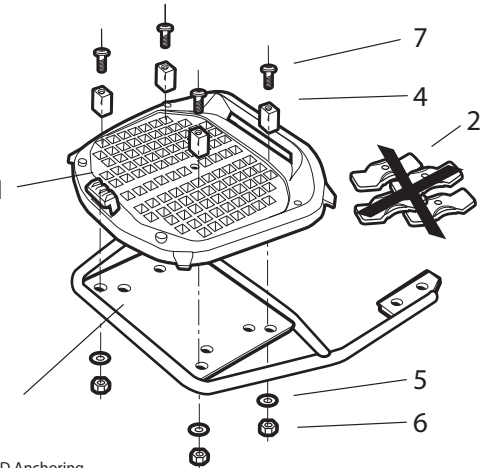
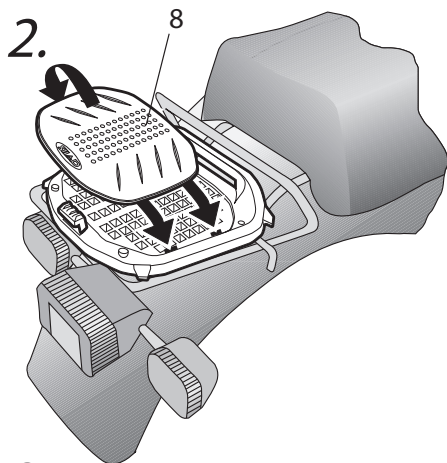


Fig. B

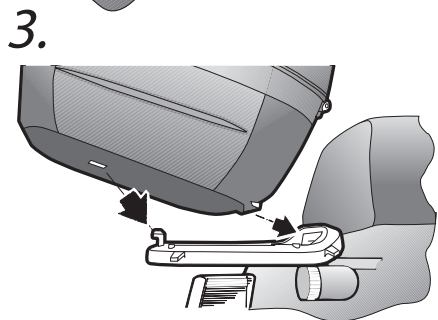


SHAD Anchoring

Pos.		Ref.	Q
1		201124	1
2		201049	4
3		304144 (M6x40 DIN 965)	4
4		200713/2	4
5		303000 (Ø6)	4
6		302021 (M6)	4
7		304058 (M6x30 DIN 965)	4
8		201125	1

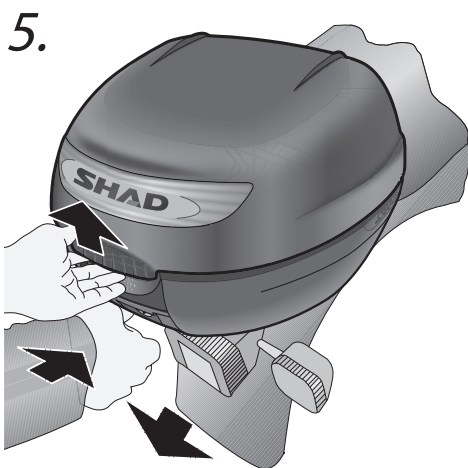
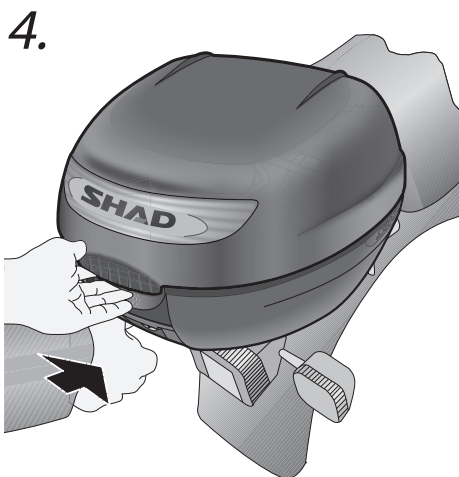


(GB) Then fit the cover (8) by bending it slightly to insert the tongues (Fig. 2)



(GB) ASSEMBLY INSTRUCCIONS

Once the adaptor has been assembled you are then ready to fit the TOP CASE. 1- Put the key in and leave in the vertical position. Slot the rear tongue into the adaptor groove. Fit the front anchorage into its housing. **WARNING.** It is important to ensure that the case is properly fixed to the adaptor. Make sure you hear the click of the pin as it goes in and that the front opening lever is correctly positioned (Fig. 3). 2- To open the TOP CASE, insert the key in the vertical position. Operate the locking mechanism as shown in Fig. 4. Turning the key in a clockwise direction will lock the TOP CASE so that it can neither be opened nor detached from the adaptor. The key can be removed in either the locked or unlocked position. 3- To remove the TOP CASE, insert the key in the vertical position, hold the case by the handle, operate the lower part of the opening mechanism and lift up gently until the anchorage comes out of the case. Then pull to remove the upper tongue from the adaptor groove (Fig. 5).



(GB) The maximum load of the case is of 3 kg.

FEATURES



DESIGNED IN BARCELONA



CAPACITY

1 full face helmets



Maximum Load: 3



PRESS LOCK SYSTEM



PLATE

D1B29PAR plate included



MEASUREMENTS

Width: 40 / Height: 28.2 / Depth: 40.5



IMPACT RESISTANT



Waterproof Sealing System



ACCESSORY BRAKE LIGHT



Find out more about luggage systems & saddlebags we have.