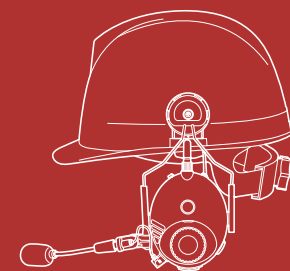


TUFFTALK

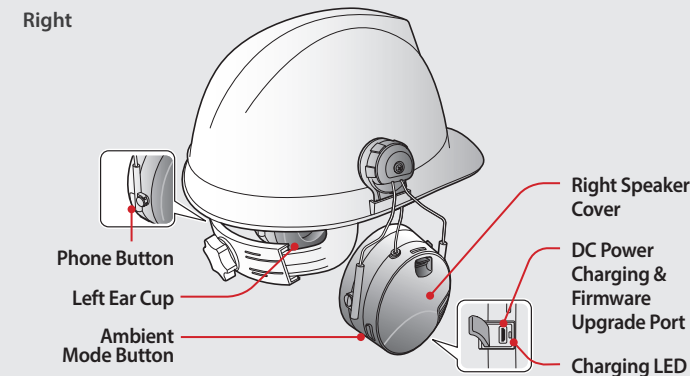
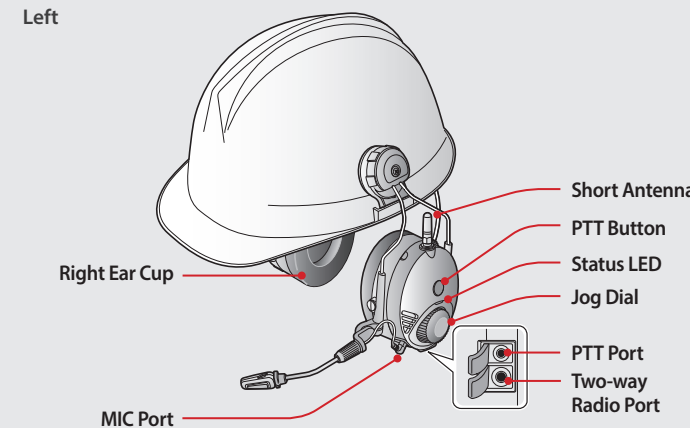
Quick Start Guide

Industrial Bluetooth®
Communication System

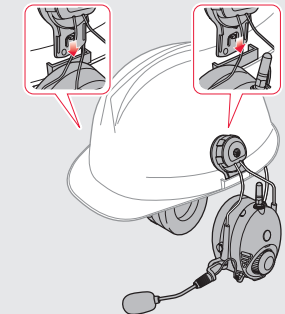


PREPARATION

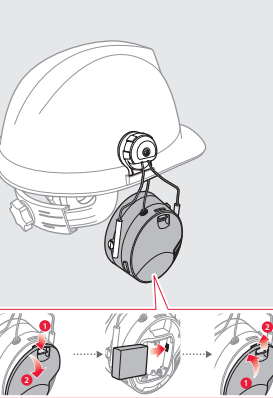
Knowing the Headset Layout



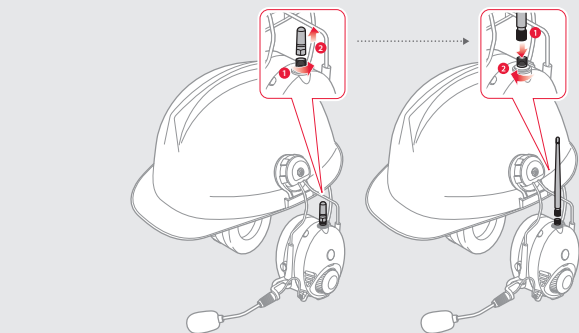
Installing the Headset



Installing the Battery

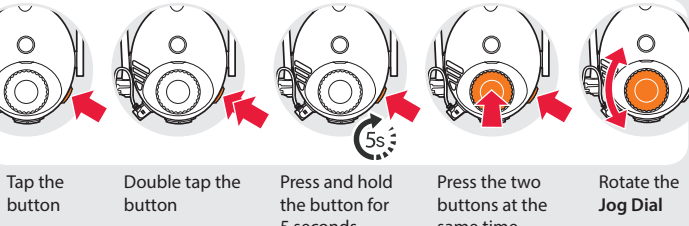


Replacing the Antenna

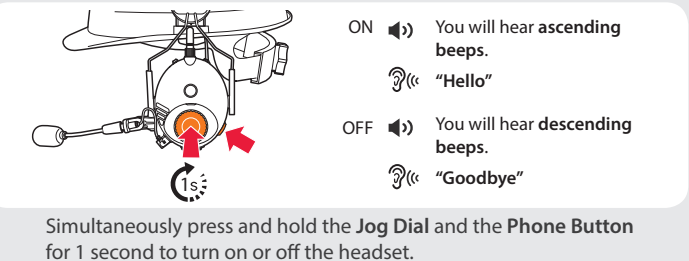


BASIC OPERATION

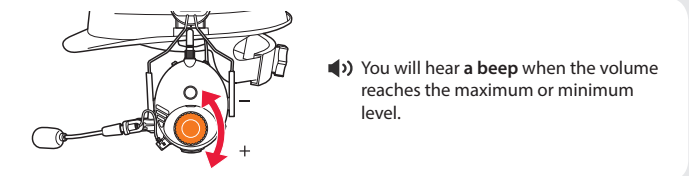
Operating the Buttons



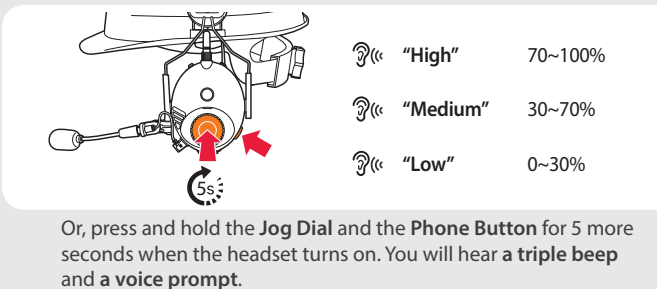
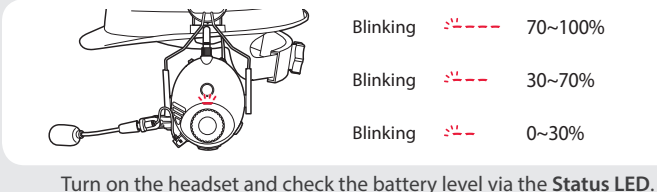
Turning On/Off the Headset



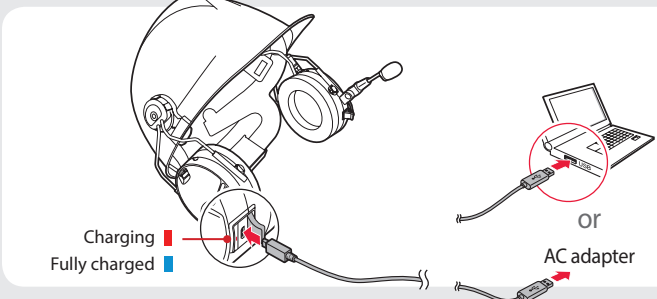
Adjusting the Volume



Checking the Battery Level

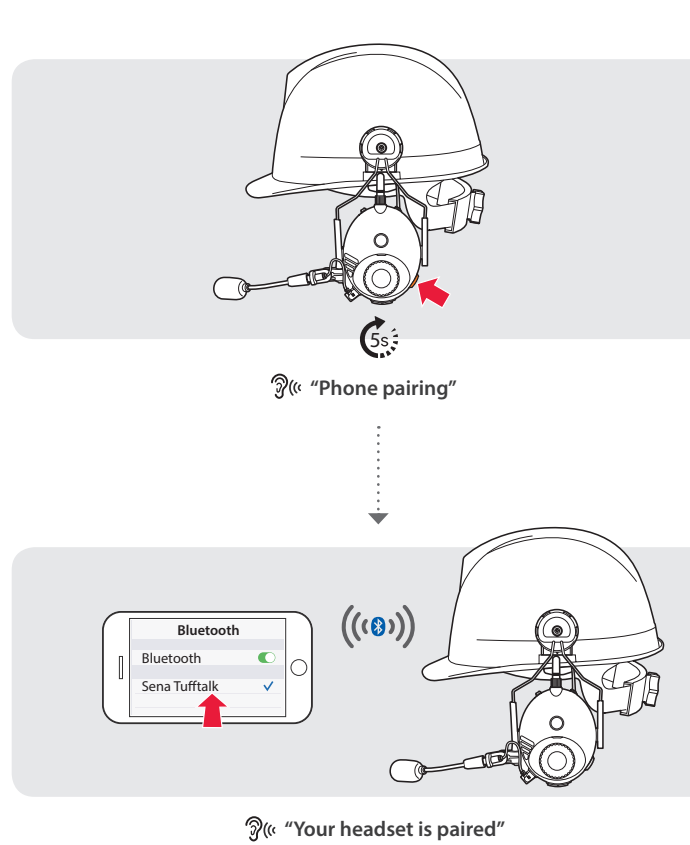


Charging the Battery

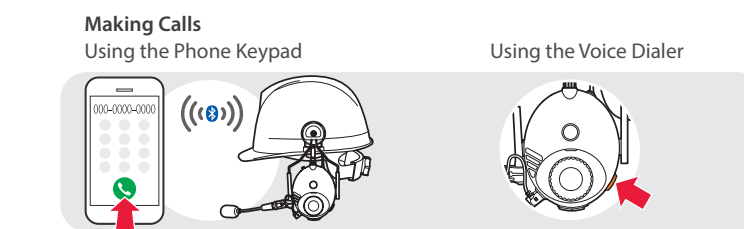
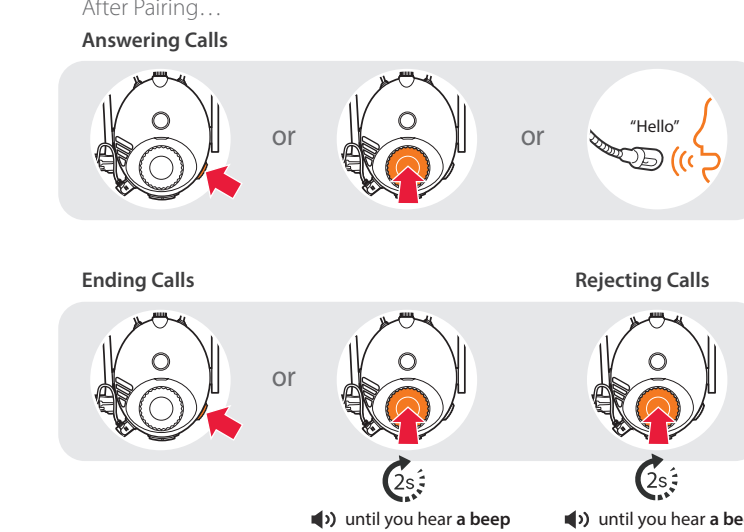


PAIRING

Pairing with Mobile Devices - Phone, Music

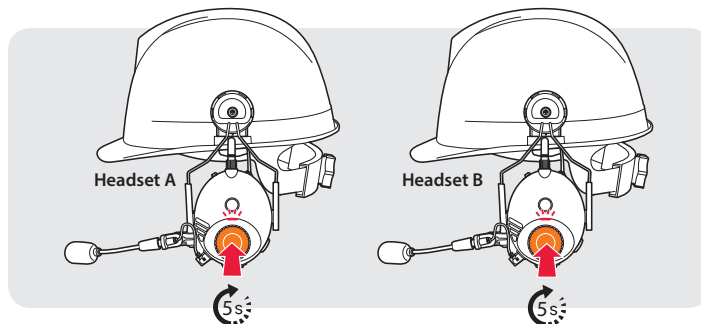


Using Phone Features

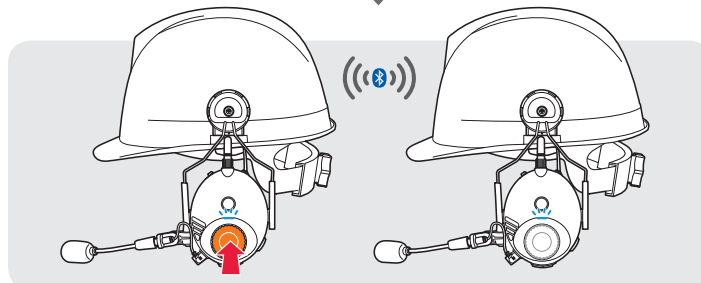


INTERCOM

Pairing with Other Headsets



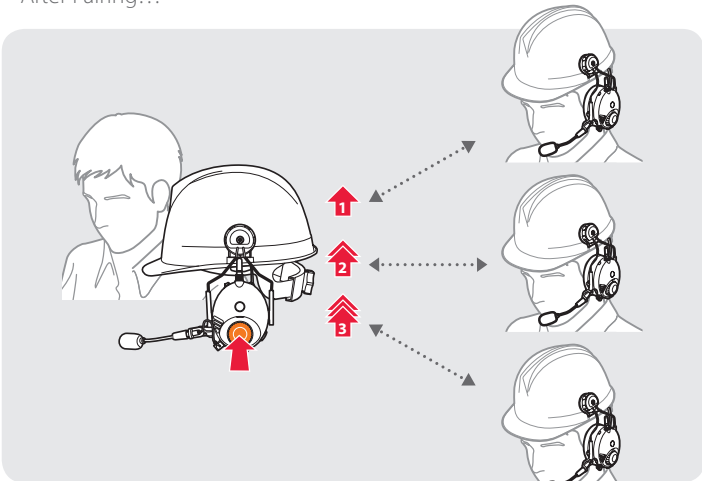
🔊 "Intercom pairing"



Follow the steps above to pair with two or more headsets.

Using the Intercom

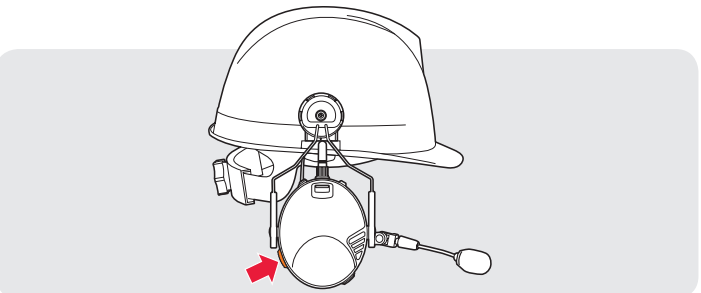
After Pairing...



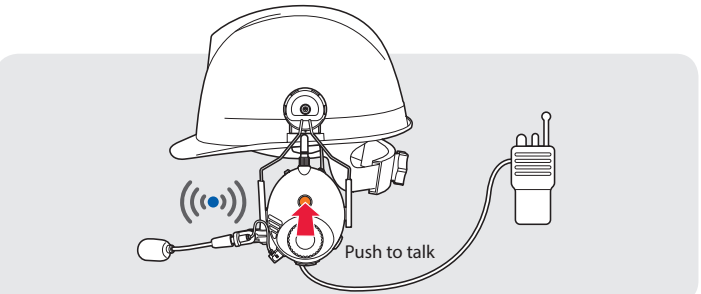
You can start or end a two-way intercom conversation with each headset.

USEFUL FUNCTIONS

Turning On/Off the Ambient Mode



Using the Built-in Two-way Radio



First, connect the two-way radio cable with the headset.

RADIO

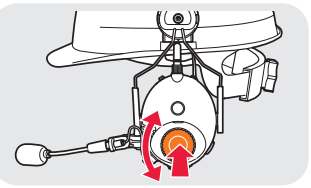
Turning On/Off the FM Radio



🔊 You will hear a double beep sound.

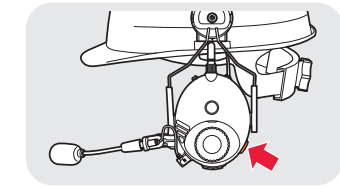
🔊 "FM on" or "FM off"

Seeking Stations

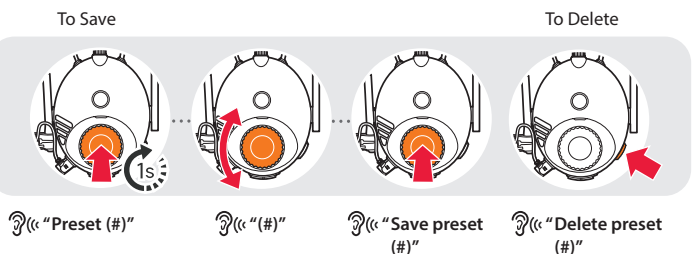


Rotate While Pressing

Listening to Preset Stations



Saving or Deleting Stations



🔊 "Preset (#)"

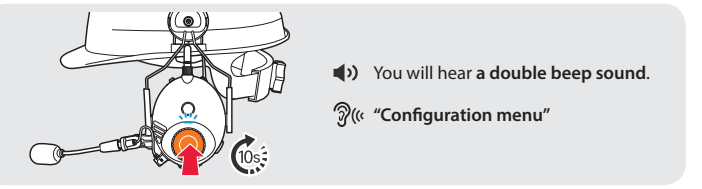
🔊 "(#)"

🔊 "Save preset (#)"

🔊 "Delete preset (#)"

SETTING

Method1) Using the headset



🔊 You will hear a double beep sound.

🔊 "Configuration menu"

Method2) Using the Sena Device Manager

Connect the headset to your computer via a USB cable. Launch the Sena Device Manager and click **DEVICE SETTING** to configure the headset settings.

For details about downloading the Sena Device Manager, refer to the leaflet included in the package.

Method3) Using the Sena Smartphone App

1. On your smartphone, download the Sena Smartphone App for Android or iPhone from Google Play or App Store.
2. Pair your smartphone with the headset.
3. Run the Sena Smartphone App. Swipe the screen to the right and tap **Settings** to configure the headset settings.

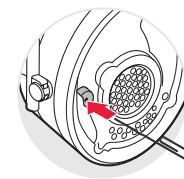
TROUBLESHOOTING

Factory Reset

If you want to restore the Tufftalk to factory default settings, press and hold the **Phone Button** for 10 seconds. Tap the **Jog Dial**. The headset automatically restores the default settings and turns off.

Fault Reset

If the Tufftalk is not working properly for any reason, push the pin-hole reset button located below the left ear cup.



OPTIONAL CABLE ACCESSORIES

TUFFTALK-A0110

2-way Radio Cable for Kenwood Twin-pin Connector

TUFFTALK-A0111

2-way Radio Cable for Motorola Twin-pin Connector

TUFFTALK-A0112

2-way Radio Cable for Motorola Single-pin Connector

TUFFTALK-A0113

2-way Radio Cable for Icom Twin-pin Connector

TUFFTALK-A0114

2-way Radio Cable for Yaesu Single-pin Connector

TUFFTALK-A0115

2-way Radio Cable for Midland Twin-pin Connector

TUFFTALK-A0116

2-way Radio Cable with an Open End

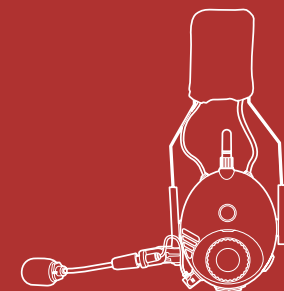
TUFFTALK-A0117

2-way Radio Cable with Straight Type for Midland or Icom Twin-pin Connector

TUFFTALK

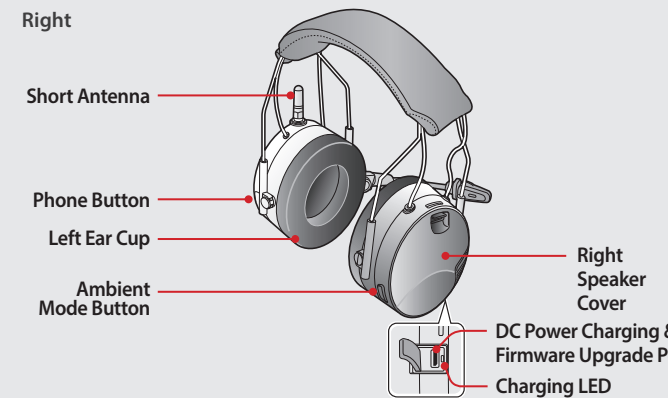
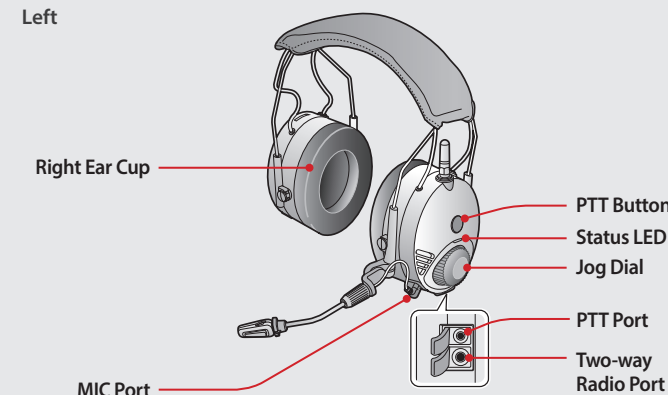
Quick Start Guide

Industrial Bluetooth®
Communication System

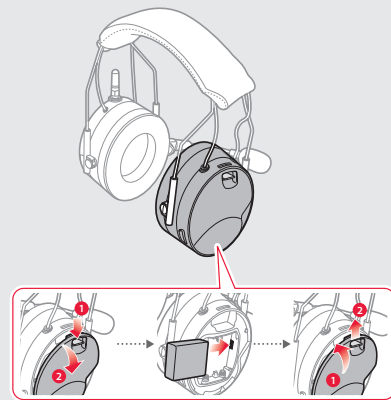


PREPARATION

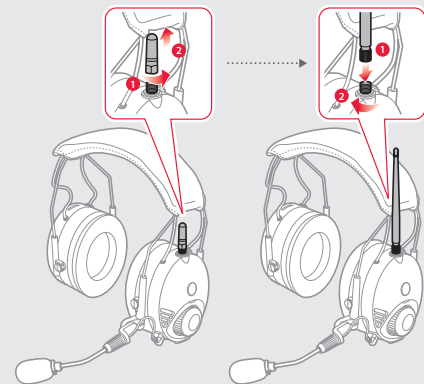
Knowing the Headset Layout



Installing the Battery

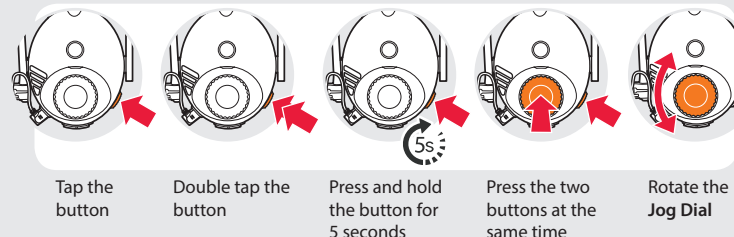


Replacing the Antenna

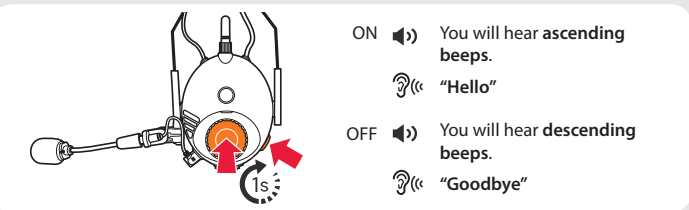


BASIC OPERATION

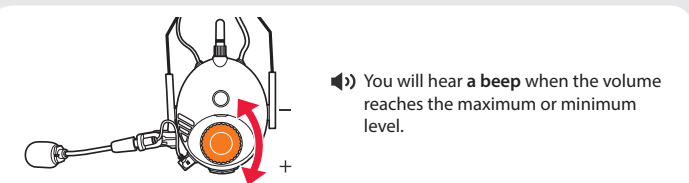
Operating the Buttons



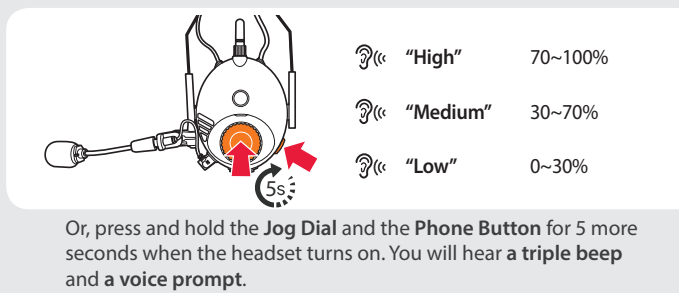
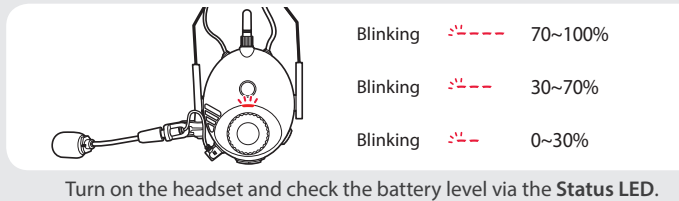
Turning On/Off the Headset



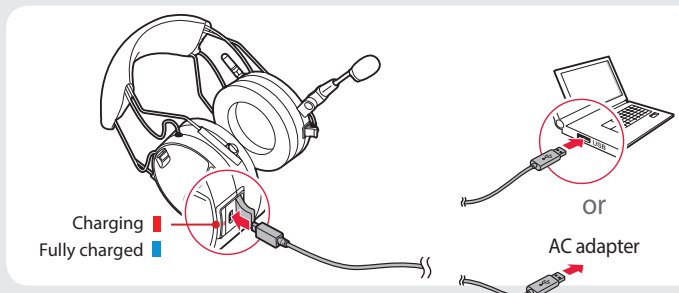
Adjusting the Volume



Checking the Battery Level

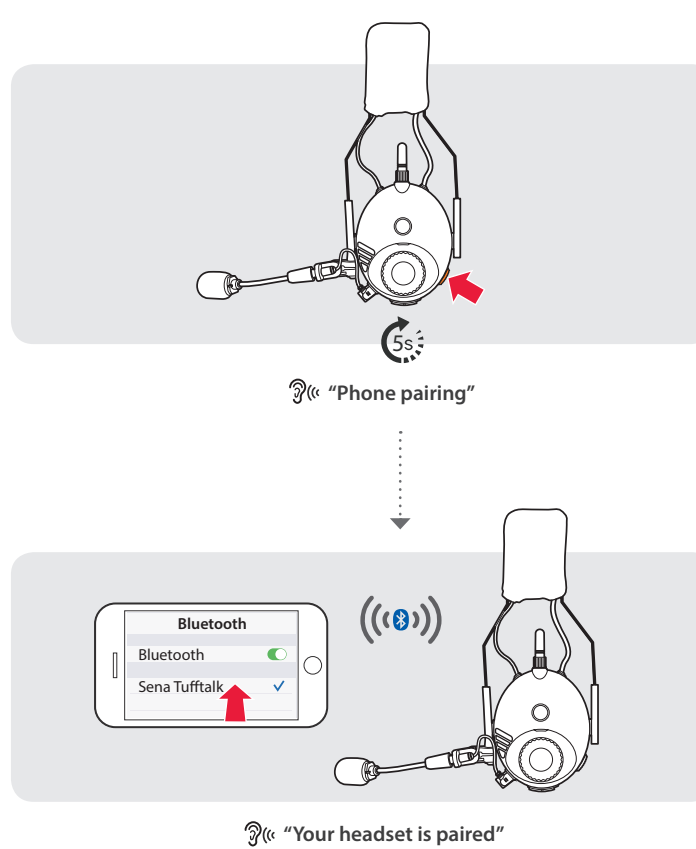


Charging the Battery

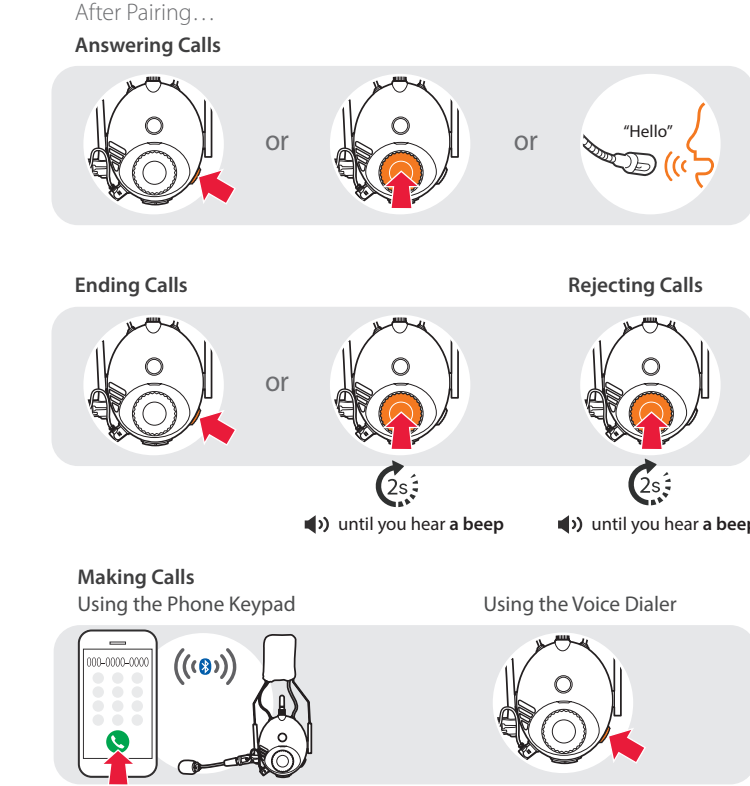


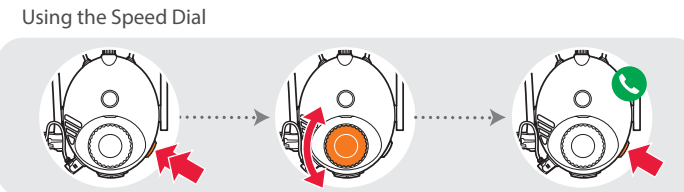
PAIRING

Pairing with Mobile Devices - Phone, Music



Using Phone Features





Using the Speed Dial

▶ You will hear a beep.
📞 "Speed dial"

Voice Menu

- Last number redial
- Speed dial 1
- Speed dial 2
- Speed dial 3
- Cancel

Listening to Music

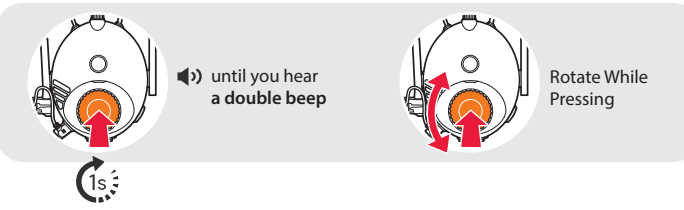
After Pairing...

Playing or Pausing Music

▶ until you hear a double beep

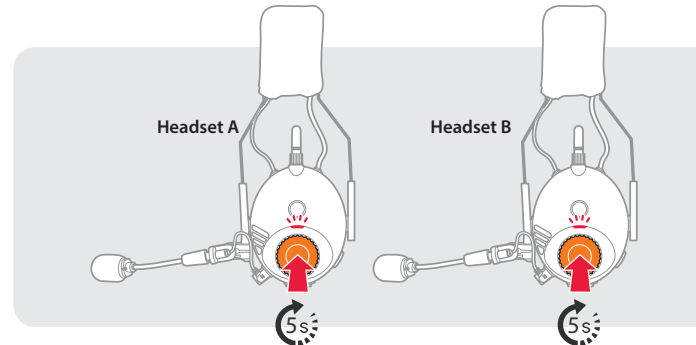
Tracking Forward or Backward

Rotate While Pressing

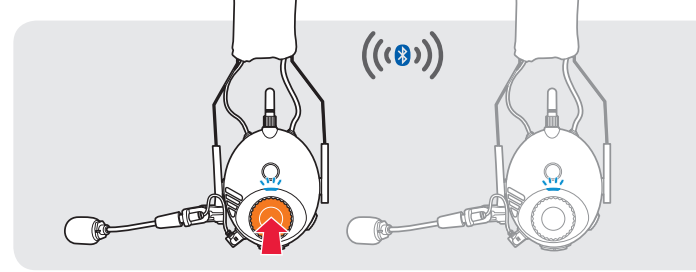


INTERCOM

Pairing with Other Headsets

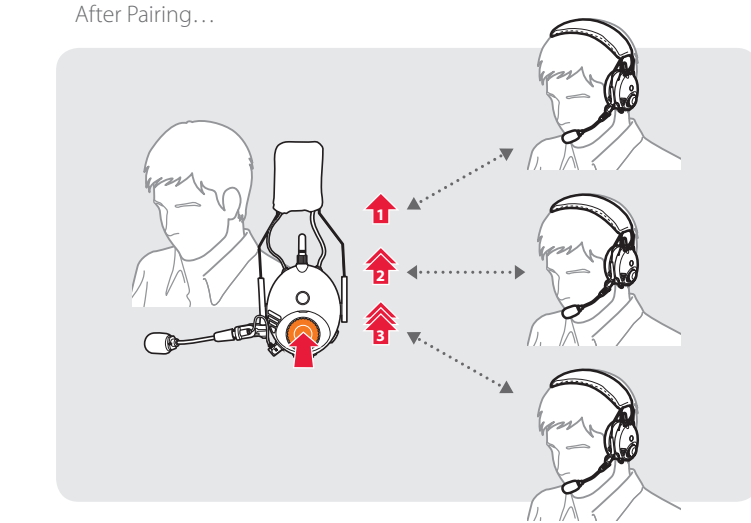


📞 "Intercom pairing"



Follow the steps above to pair with two or more headsets.

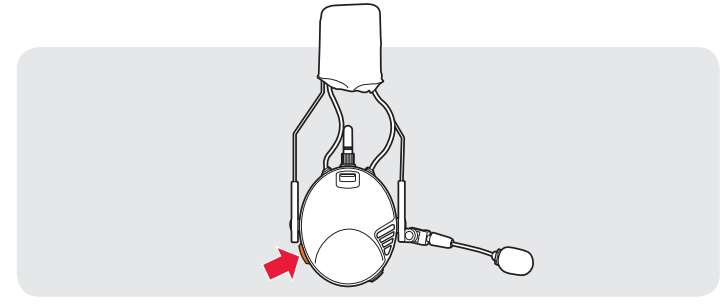
Using the Intercom



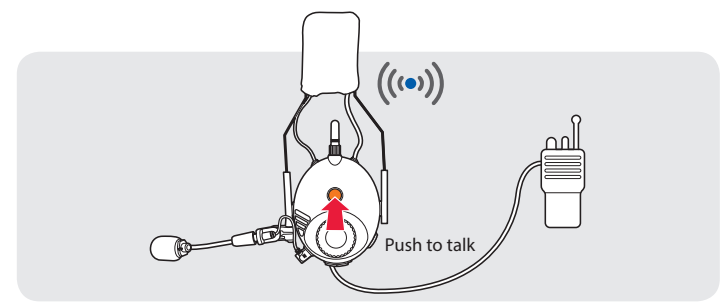
You can start or end a two-way intercom conversation with each headset.

USEFUL FUNCTIONS

Turning On/Off the Ambient Mode



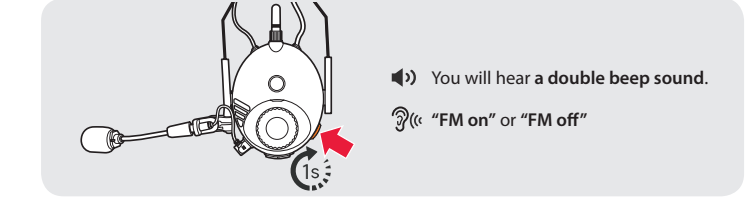
Using the Built-in Two-way Radio



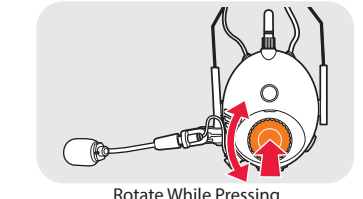
First, connect the two-way radio cable with the headset.

RADIO

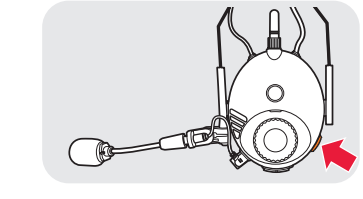
Turning On/Off the FM Radio



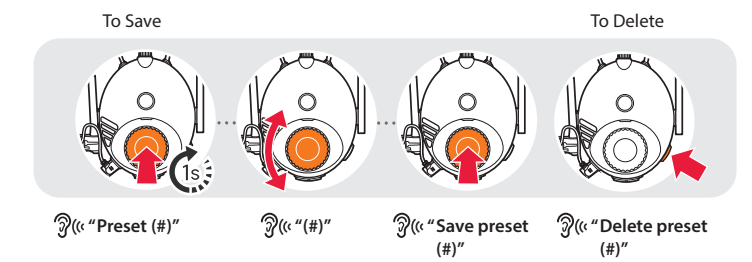
Seeking Stations



Listening to Preset Stations



Saving or Deleting Stations



SETTING

Method1) Using the headset



Method2) Using the Sena Device Manager

Connect the headset to your computer via a USB cable. Launch the Sena Device Manager and click **DEVICE SETTING** to configure the headset settings.

For details about downloading the Sena Device Manager, refer to the leaflet included in the package.

Method3) Using the Sena Smartphone App

1. On your smartphone, download the Sena Smartphone App for Android or iPhone from Google Play or App Store.
2. Pair your smartphone with the headset.
3. Run the Sena Smartphone App. Swipe the screen to the right and tap **Settings** to configure the headset settings.

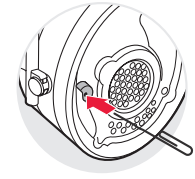
TROUBLESHOOTING

Factory Reset

If you want to restore the Tufftalk to factory default settings, press and hold the **Phone Button** for 10 seconds. Tap the **Jog Dial**. The headset automatically restores the default settings and turns off.

Fault Reset

If the Tufftalk is not working properly for any reason, push the pin-hole reset button located below the left ear cup.



OPTIONAL CABLE ACCESSORIES

TUFFTALK-A0110 2-way Radio Cable for Kenwood Twin-pin Connector	TUFFTALK-A0114 2-way Radio Cable for Yaesu Single-pin Connector
TUFFTALK-A0111 2-way Radio Cable for Motorola Twin-pin Connector	TUFFTALK-A0115 2-way Radio Cable for Midland Twin-pin Connector
TUFFTALK-A0112 2-way Radio Cable for Motorola Single-pin Connector	TUFFTALK-A0116 2-way Radio Cable with an Open End
TUFFTALK-A0113 2-way Radio Cable for Icom Twin-pin Connector	TUFFTALK-A0117 2-way Radio Cable with Straight Type for Midland or Icom Twin-pin Connector