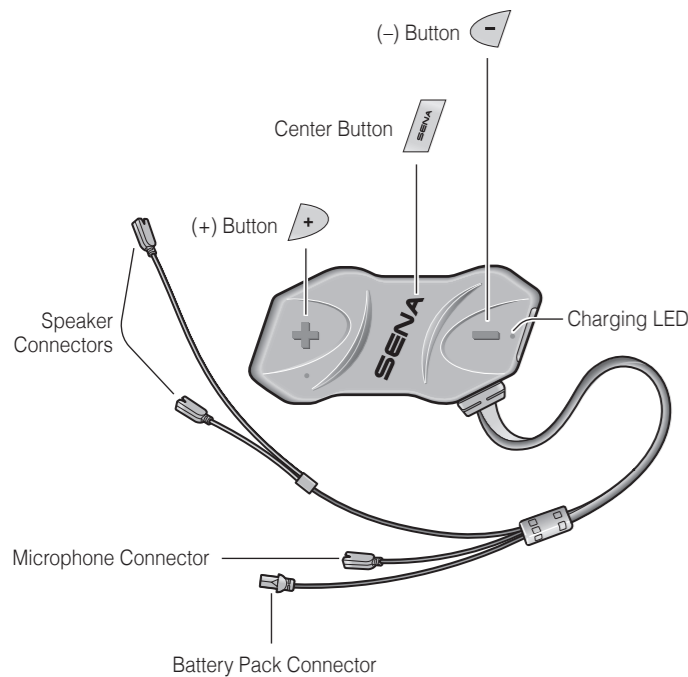
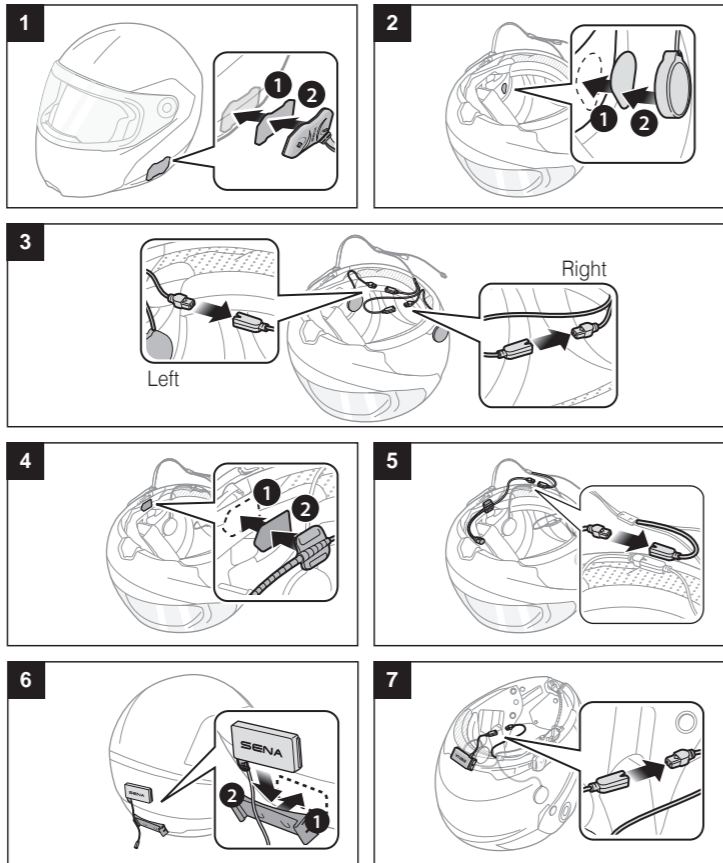


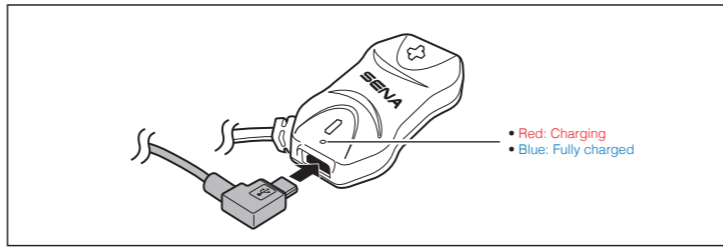
10R Quick Start Guide



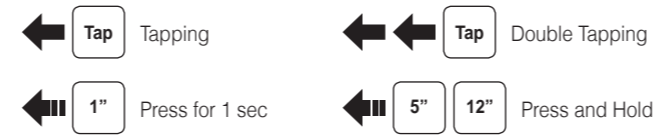
Installation



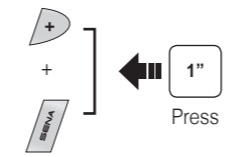
Charging



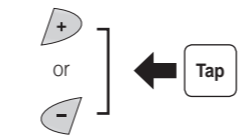
Button Operation



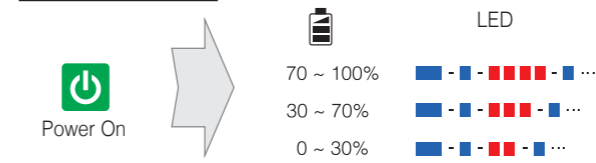
Power On/Off



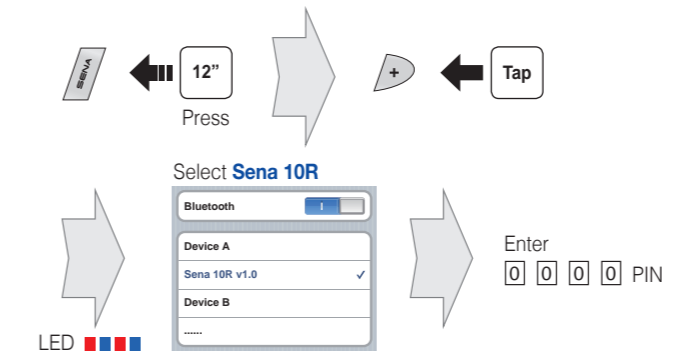
Volume Adjustment



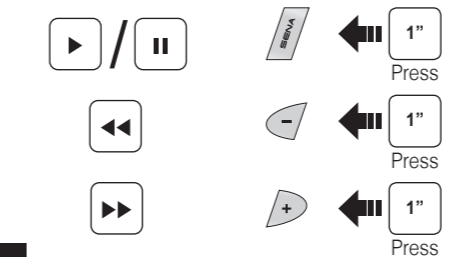
Battery Check



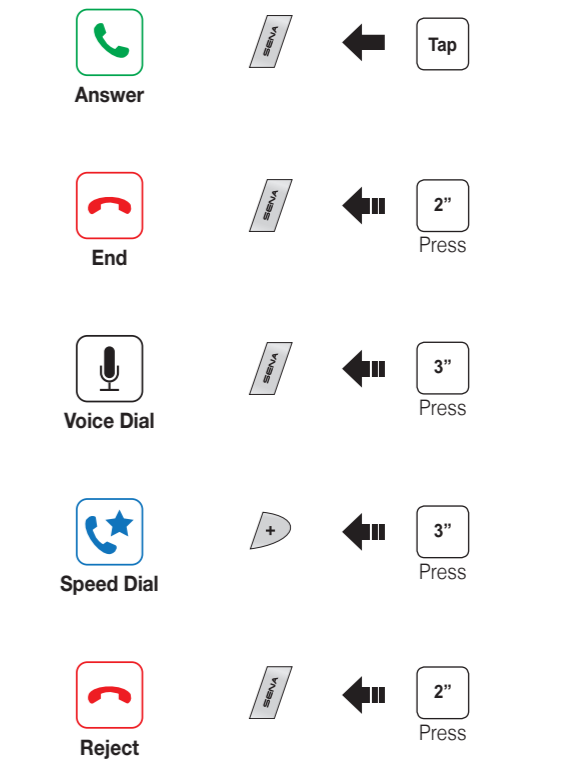
Phone, Music Pairing



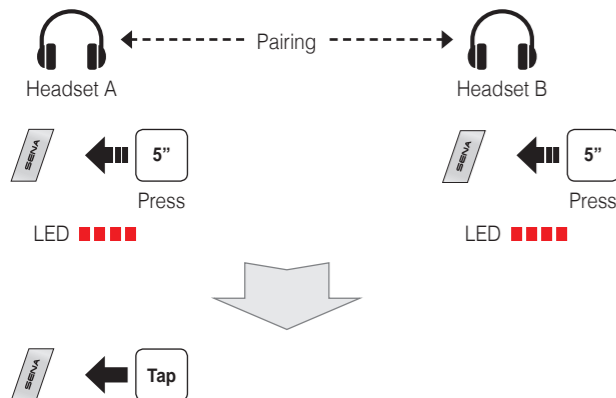
Music Operation



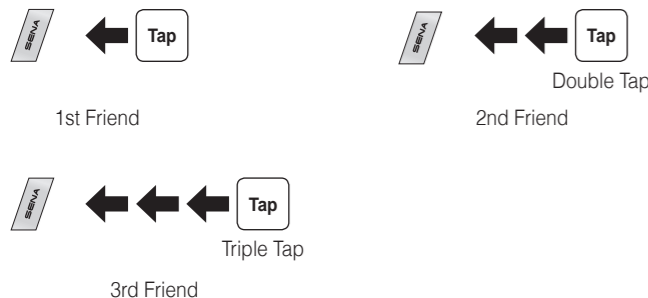
Mobile Phone Call Making and Answering



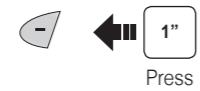
Intercom Pairing



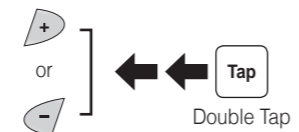
Intercom Start/End



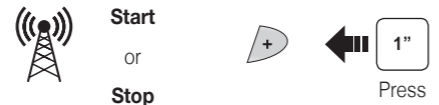
Radio On/Off



Radio Seek Stations



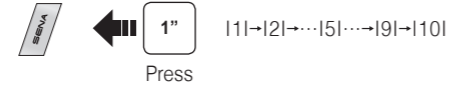
Radio Scan Up FM Band



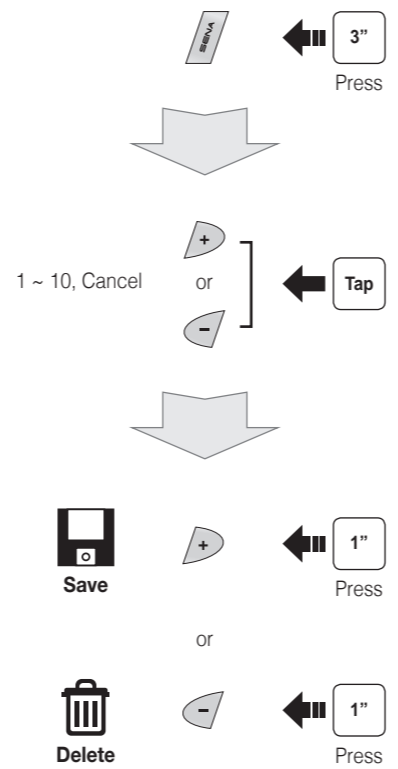
Save to preset while scanning



Radio Move to Preset Station



Radio Save or Delete Preset



Setting

Configuration Menu



Using the Sena Device Manager

Connect the headset to your computer via a USB cable. Launch the Sena Device Manager and click **DEVICE SETTING** to configure the headset settings. For details about downloading the Sena Device Manager, please refer to the leaflet included in the package.

Using the Sena Smartphone App

1. On your smartphone, download the Sena Smartphone App for Android or iPhone from Google Play or App Store.
2. Pair your smartphone with the headset.
3. Run the Sena Smartphone App. Swipe the screen to the right and tap Setting to configure the headset settings.

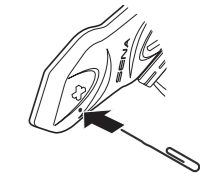
Troubleshooting

Factory Reset

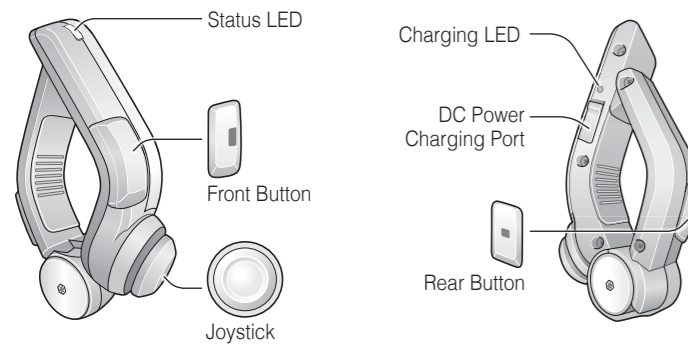
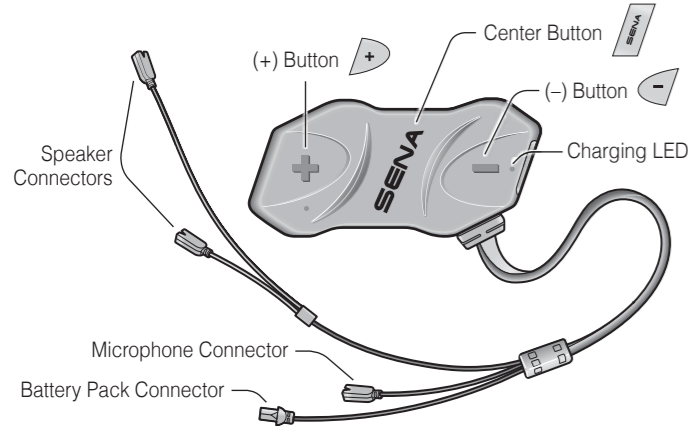
If you want to restore the 10R to factory default settings, use the Factory Reset in the configuration menu. The headset automatically restores the default settings and turns off.

Fault Reset

If the 10R is not working properly for any reason, reset by gently pushing the pin-hole reset button located below the (+) button.

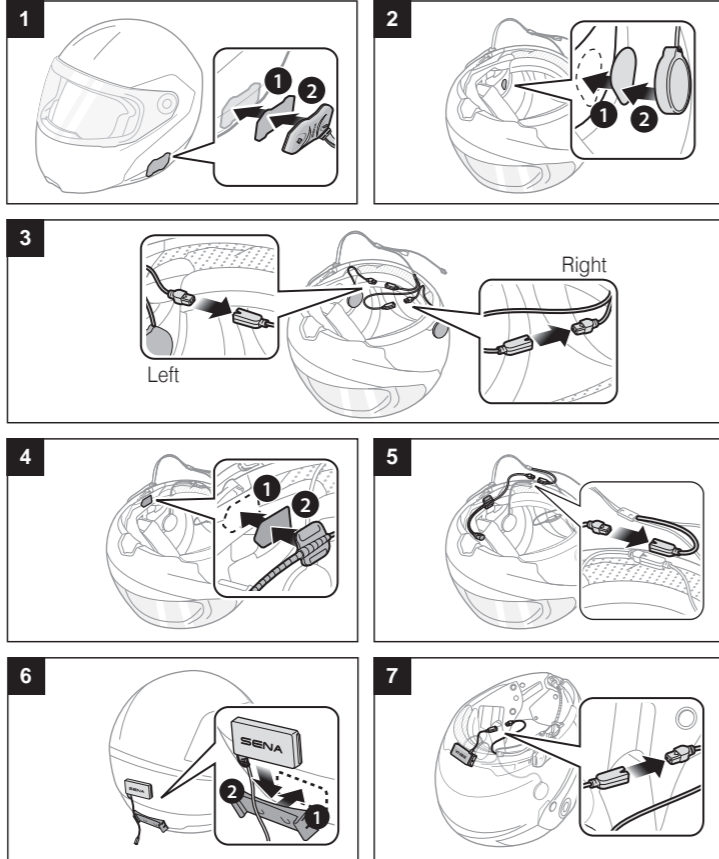


10R with Handlebar Remote Quick Start Guide

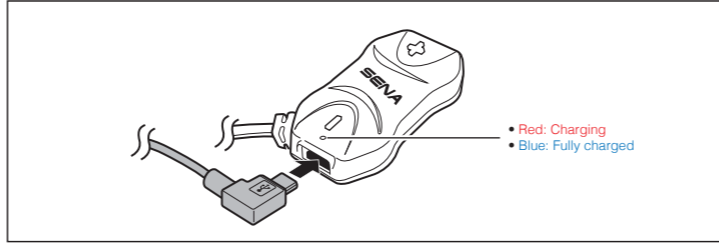


16.Feb

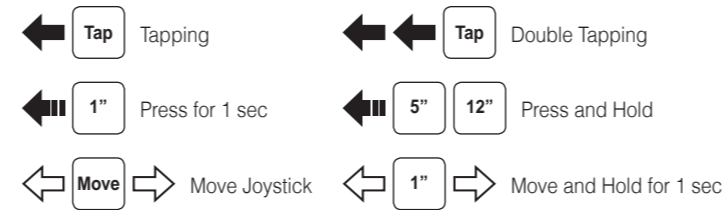
Installation



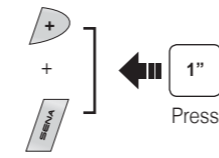
Charging



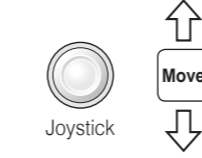
Button Operation



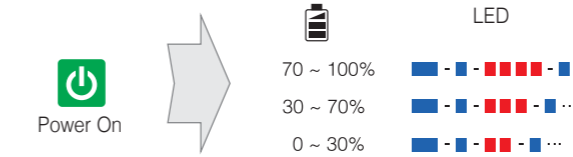
Power On/Off



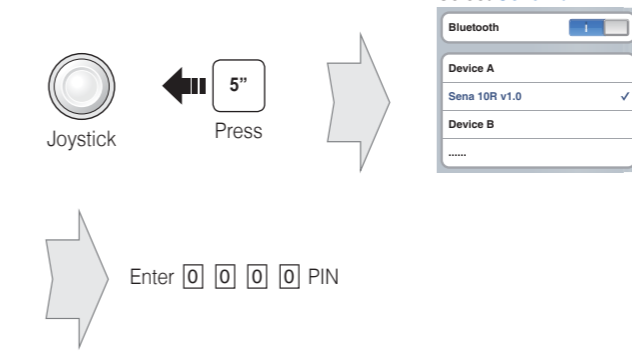
Volume Adjustment



Battery Check



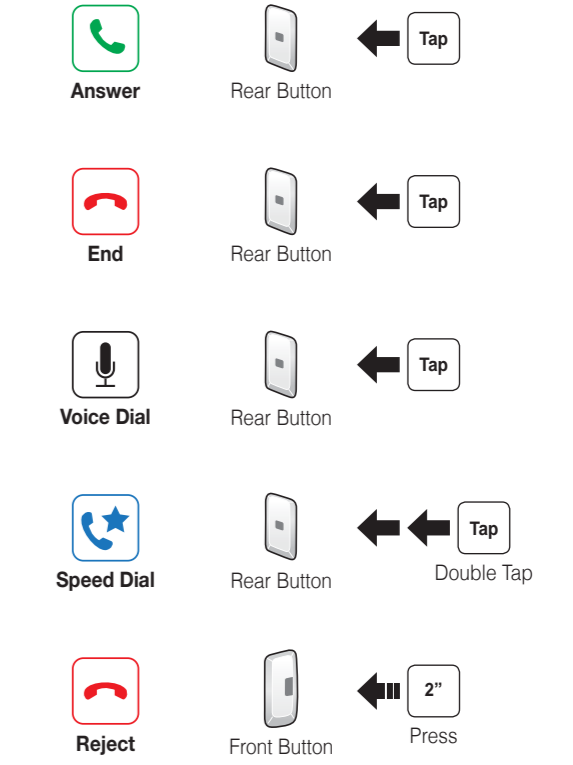
Phone, Music Pairing



Music Operation



Mobile Phone Call Making and Answering



1

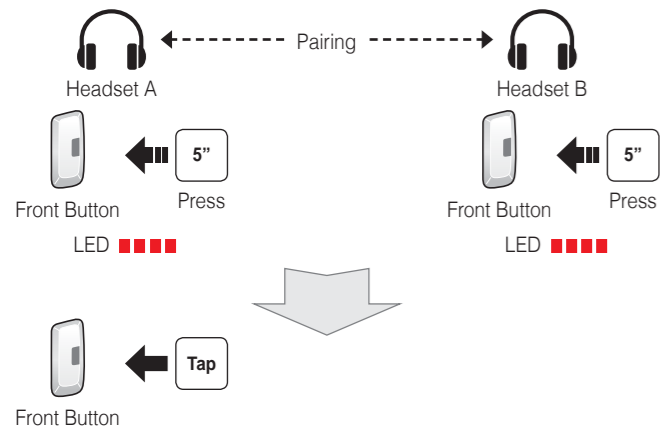
2

3

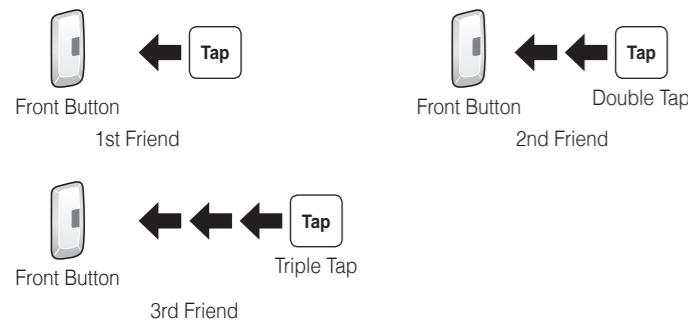
4

5

Intercom Pairing



Intercom Start/End



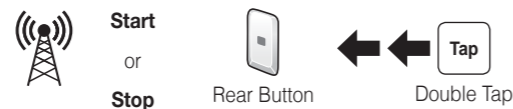
Radio On/Off



Radio Seek Stations



Radio Scan Up FM Band



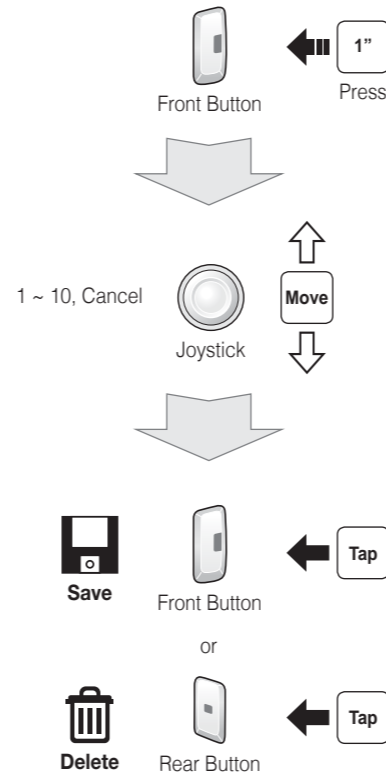
Save to preset while scanning



Radio Move to Preset Station



Radio Save or Delete Preset



Setting

Configuration Menu



Using the Sena Device Manager

Connect the headset to your computer via a USB cable. Launch the Sena Device Manager and click **DEVICE SETTING** to configure the headset settings. For details about downloading the Sena Device Manager, please refer to the leaflet included in the package.

Using the Sena Smartphone App

1. On your smartphone, download the Sena Smartphone App for Android or iPhone from Google Play or App Store.
2. Pair your smartphone with the headset.
3. Run the Sena Smartphone App. Swipe the screen to the right and tap Setting to configure the headset settings.

Troubleshooting

Handlebar Remote Disconnection

If the Handlebar Remote becomes disconnected with your headset, recharge the Handlebar Remote or go through the pairing process again. Meanwhile, you can use the headset control buttons to operate the headset.

Factory Reset

If you want to restore the 10R to factory default settings, use the Factory Reset in the configuration menu. The headset automatically restores the default settings and turns off.

Fault Reset

If the 10R is not working properly for any reason, reset by gently pushing the pin-hole reset button located below the (+) button.

