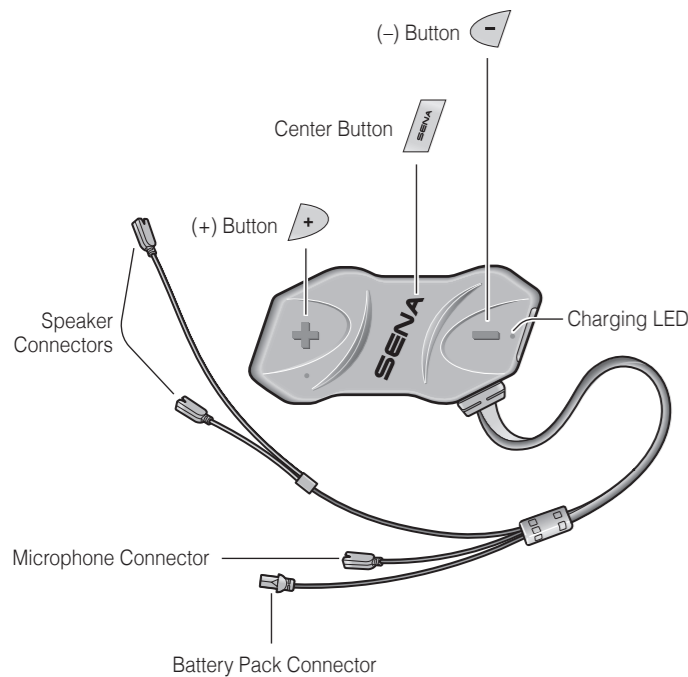
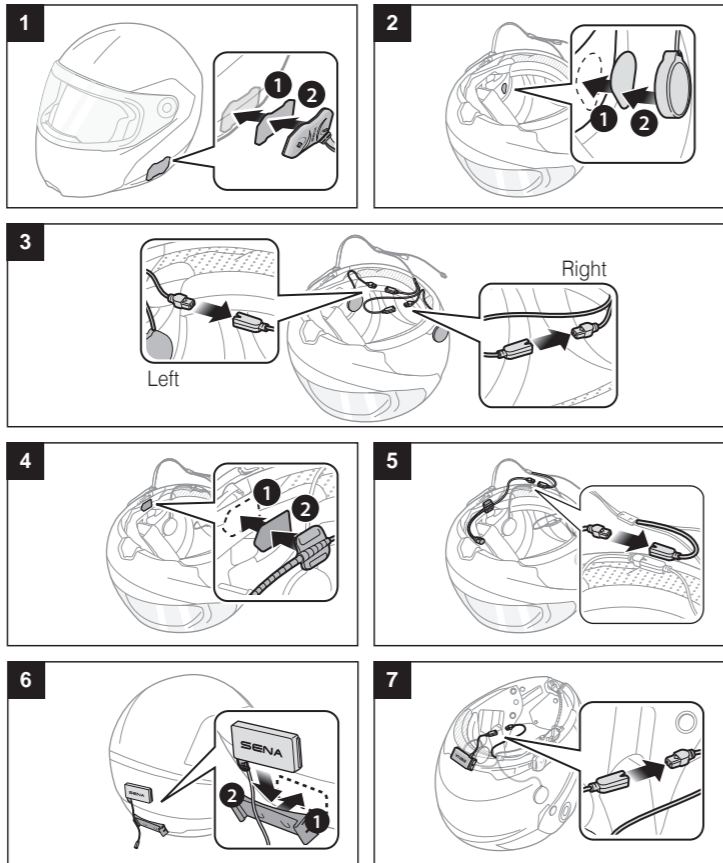


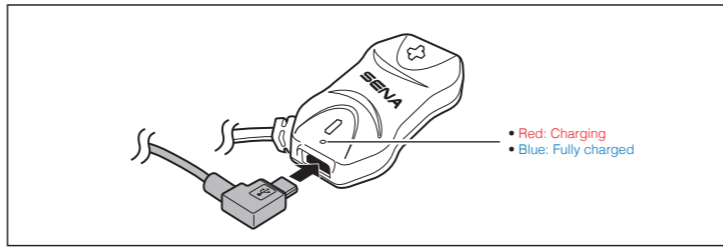
**10R Quick Start Guide**



**Installation**



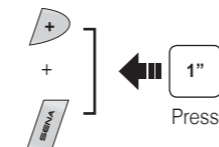
**Charging**



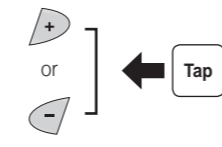
**Button Operation**



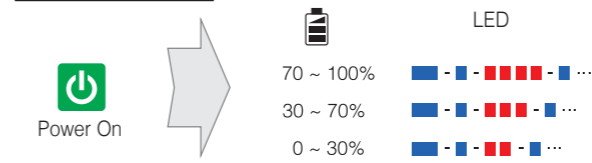
**Power On/Off**



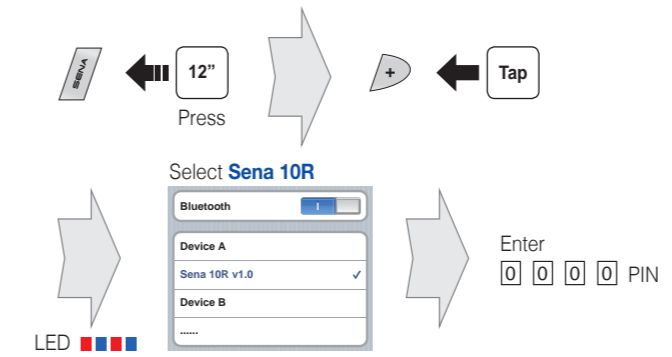
**Volume Adjustment**



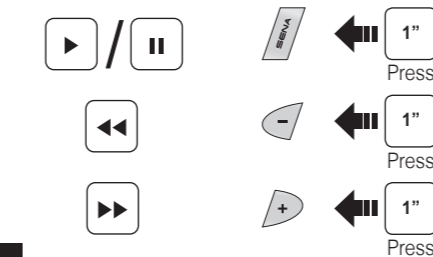
**Battery Check**



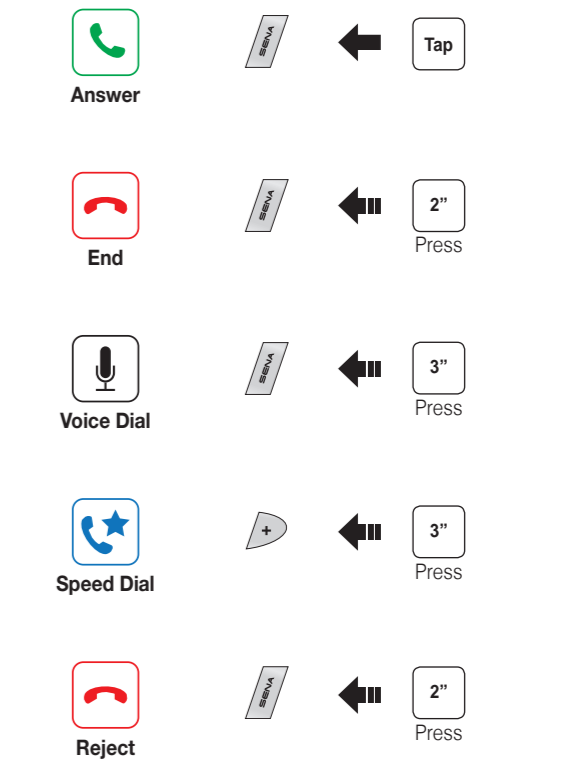
**Phone, Music Pairing**



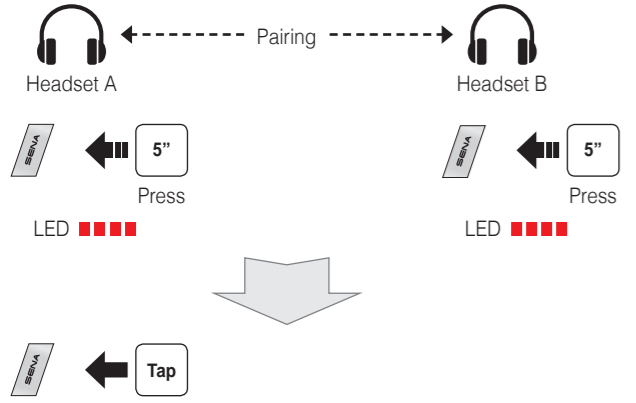
**Music Operation**



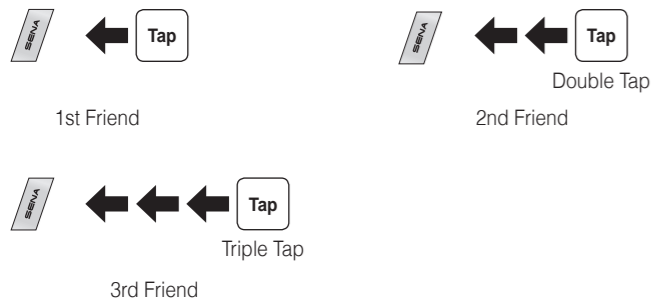
**Mobile Phone Call Making and Answering**



### Intercom Pairing



### Intercom Start/End



### Radio On/Off



### Radio Seek Stations



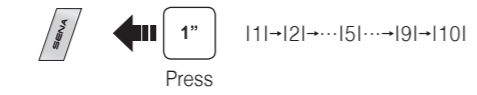
### Radio Scan Up FM Band



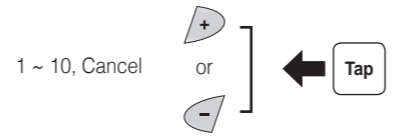
### Save to preset while scanning



### Radio Move to Preset Station



### Radio Save or Delete Preset



### Setting

#### Configuration Menu



#### Using the Sena Device Manager

Connect the headset to your computer via a USB cable. Launch the Sena Device Manager and click **DEVICE SETTING** to configure the headset settings. For details about downloading the Sena Device Manager, please refer to the leaflet included in the package.

#### Using the Sena Smartphone App

1. On your smartphone, download the Sena Smartphone App for Android or iPhone from Google Play or App Store.
2. Pair your smartphone with the headset.
3. Run the Sena Smartphone App. Swipe the screen to the right and tap Setting to configure the headset settings.

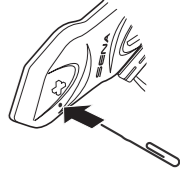
### Troubleshooting

#### Factory Reset

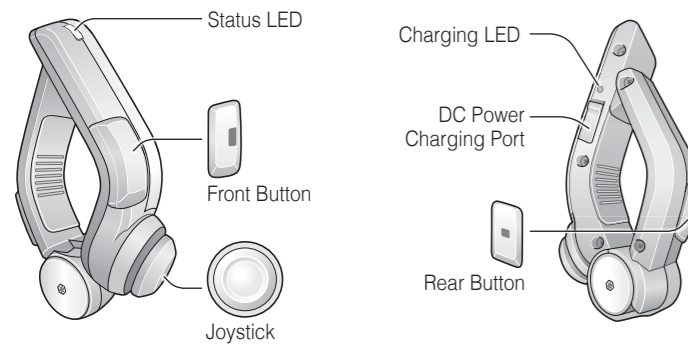
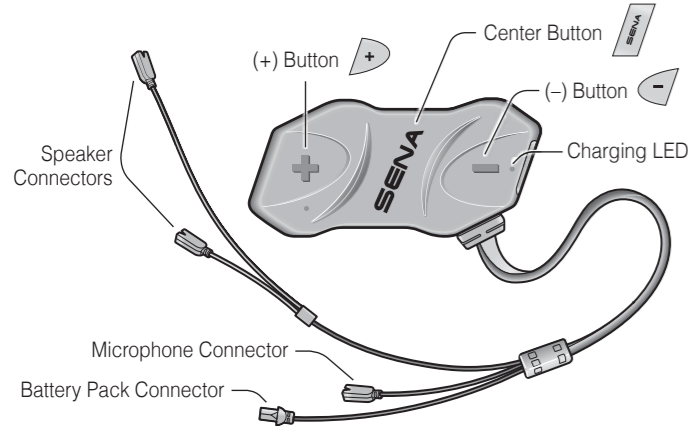
If you want to restore the 10R to factory default settings, use the Factory Reset in the configuration menu. The headset automatically restores the default settings and turns off.

#### Fault Reset

If the 10R is not working properly for any reason, reset by gently pushing the pin-hole reset button located below the (+) button.

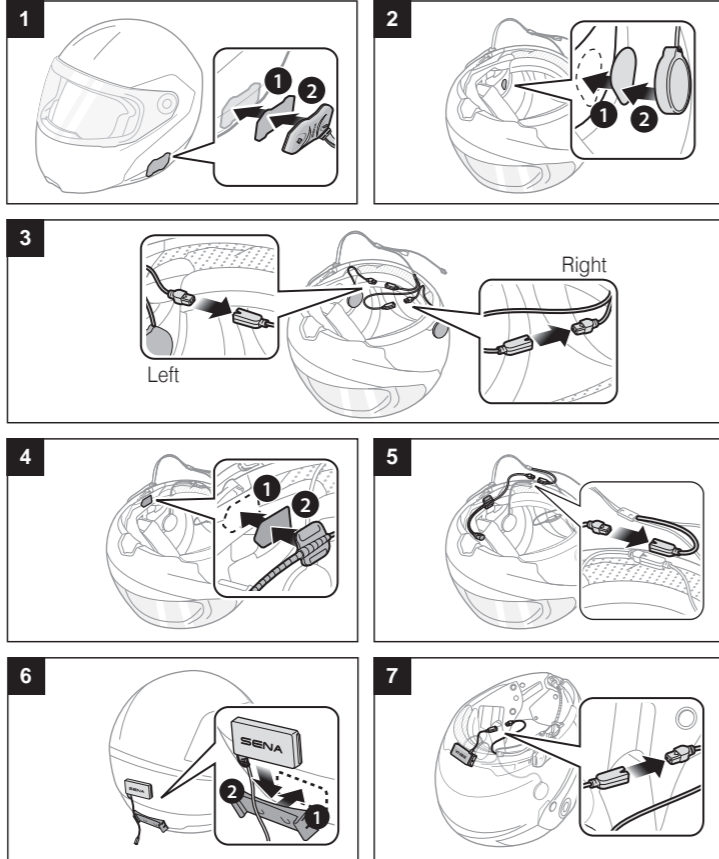


# 10R with Handlebar Remote Quick Start Guide

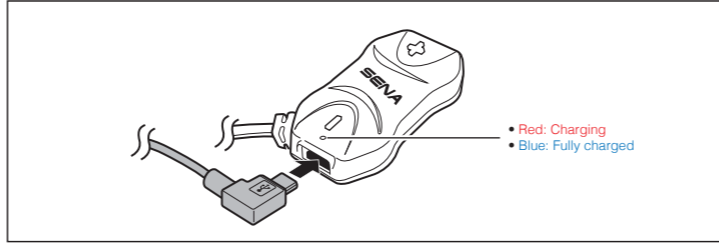


16.Feb

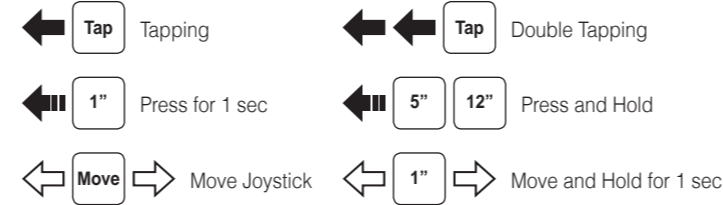
## Installation



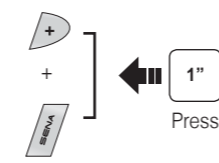
## Charging



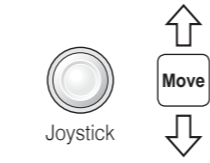
## Button Operation



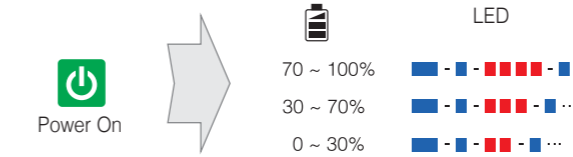
## Power On/Off



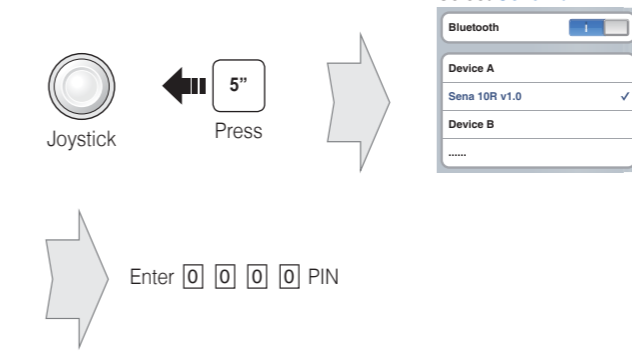
## Volume Adjustment



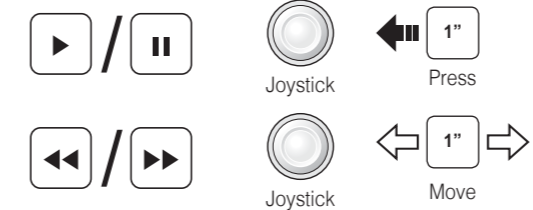
## Battery Check



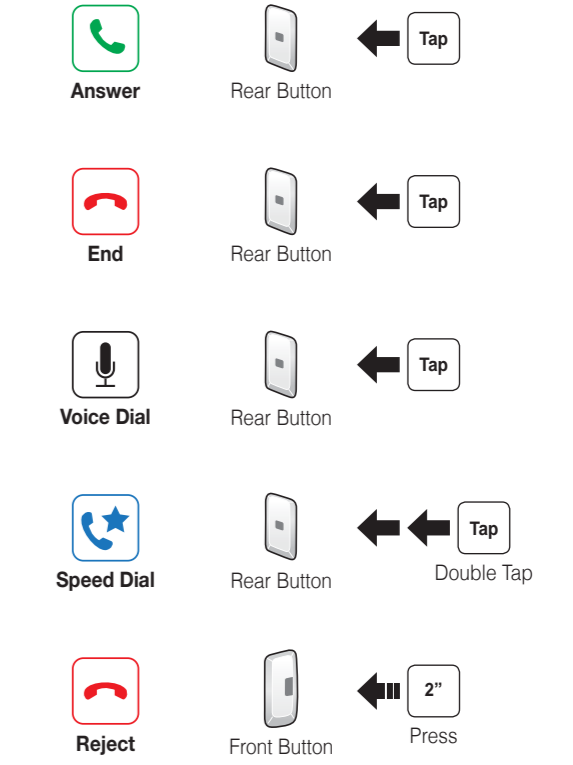
## Phone, Music Pairing



## Music Operation



## Mobile Phone Call Making and Answering



1

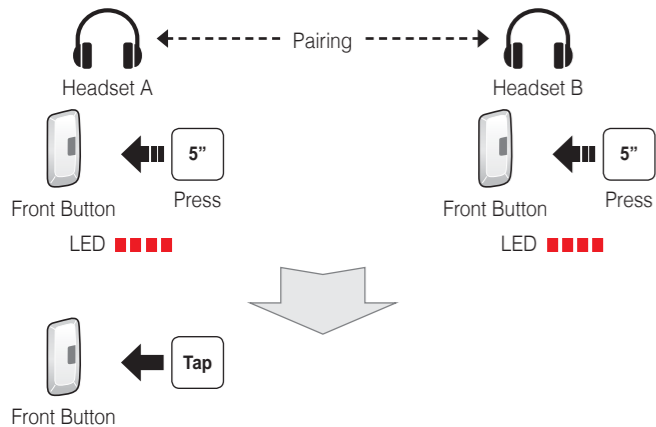
2

3

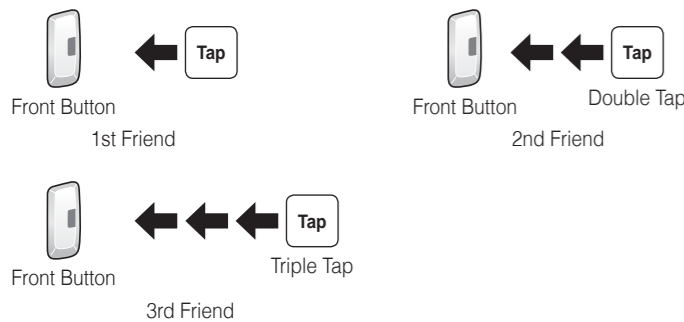
4

5

## Intercom Pairing



## Intercom Start/End



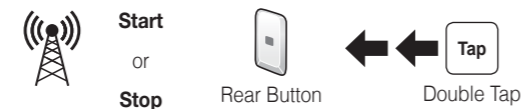
## Radio On/Off



## Radio Seek Stations



## Radio Scan Up FM Band



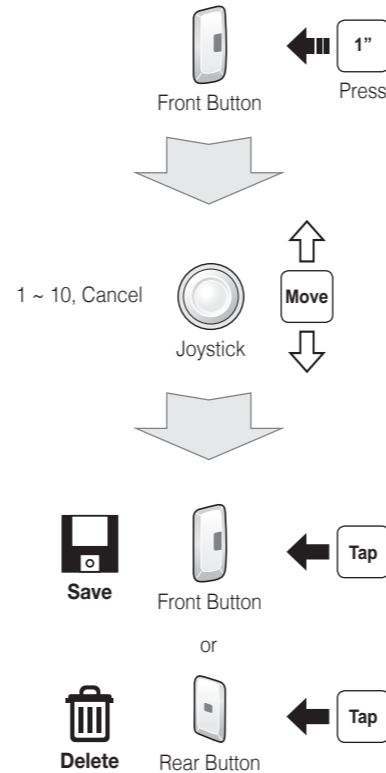
### Save to preset while scanning



## Radio Move to Preset Station



## Radio Save or Delete Preset



## Setting

### Configuration Menu



### Using the Sena Device Manager

Connect the headset to your computer via a USB cable. Launch the Sena Device Manager and click **DEVICE SETTING** to configure the headset settings. For details about downloading the Sena Device Manager, please refer to the leaflet included in the package.

### Using the Sena Smartphone App

1. On your smartphone, download the Sena Smartphone App for Android or iPhone from Google Play or App Store.
2. Pair your smartphone with the headset.
3. Run the Sena Smartphone App. Swipe the screen to the right and tap Setting to configure the headset settings.

## Troubleshooting

### Handlebar Remote Disconnection

If the Handlebar Remote becomes disconnected with your headset, recharge the Handlebar Remote or go through the pairing process again. Meanwhile, you can use the headset control buttons to operate the headset.

### Factory Reset

If you want to restore the 10R to factory default settings, use the Factory Reset in the configuration menu. The headset automatically restores the default settings and turns off.

### Fault Reset

If the 10R is not working properly for any reason, reset by gently pushing the pin-hole reset button located below the (+) button.

