

QUICK START GUIDE



SC1M



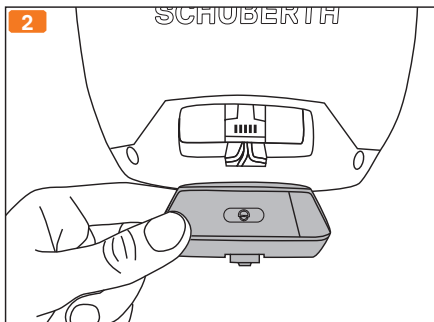
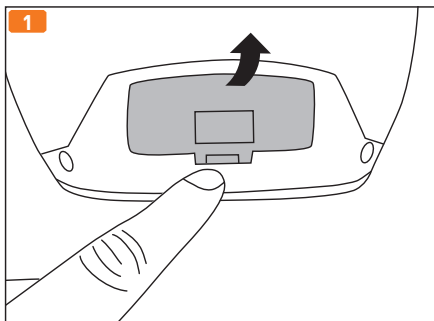
SCHUBERTH

QUICK START GUIDE

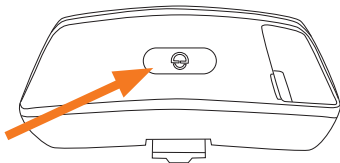
SC1M

We recommend you to read the operating instructions carefully in addition to the Quick Start Guide, in order to understand all the functions and the correct operation.

Installation




Power On
Power Off





+ Button: +

- Button: -

 Button: Center Button

1 Battery



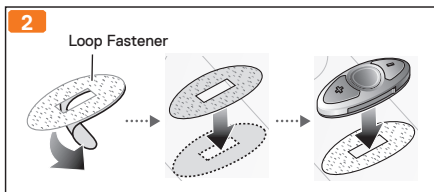
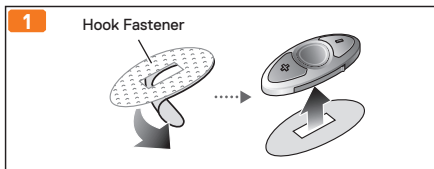
Remove

Installation

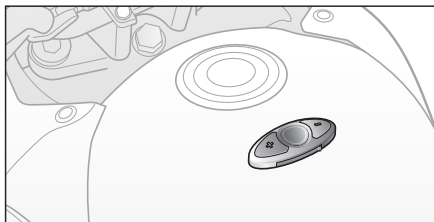
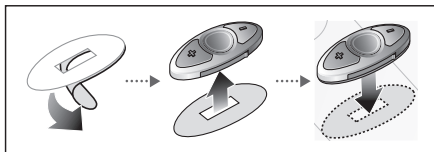
Using the clip



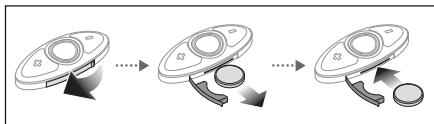
Using the hook and loop fastener




Using the tape



Replace Batterie



Button Operation

 Tapping

 Double Tapping

 Press for 1sec

Batterie



LED

70 ~ 100% 

30 ~ 70% 

0 ~ 30% 

Basic Function

Power On



Power Off



Reset



Volume Adjustment



Intercom

Pairing



Start Group Intercom



End Group Intercom



Mobile Phone

Mobile phone pairing



 „Configuration Menu“



 „Phone pairing“

Answer mobile phone call



End mobile phone call



Music

Play & Pause Bluetooth music



Track forward

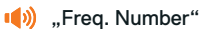


FM Radio

Radio On & Off



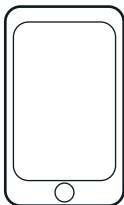
Seek station up



Smartphone App



🔍 SCHUBERTH



Notice

Attaching the product to the helmet is considered a modification to the helmet and may void your helmet's warranty or compromise your helmet's functionality. This may entail risks during an accident, so be fully aware of this fact before using the product. Should you not accept this fact, you may return the product for a full refund.

In some regions, it is prohibited by law to ride motorcycles while wearing headsets or earbuds. Therefore be certain you are aware of all relevant laws in the region where you are using the product and are sure that you comply with them.