

SCHUBERTH SC1

CONTENTS

Safety Precautions

1 INTRODUCTION

2 PACKAGE CONTENTS

3 INSTALLING THE SC1 ON YOUR HELMET

- 3.1 Installing the SC1
- 3.2 Taking out the SC1

4 GETTING STARTED

- 4.1 Button Operation
- 4.2 Powering On and Off
- 4.3 Charging
- 4.4 Checking the Battery Level
- 4.5 Volume Adjustment
- 4.6 Softwares

5 PAIRING THE SC1 WITH BLUETOOTH DEVICES

- 5.1 Mobile Phone Pairing - Mobile Phone, Bluetooth Stereo Device
- 5.2 Second Mobile Phone Pairing - Second Mobile Phone, GPS, and SR10
- 5.3 Advanced Selective Pairing - A2DP Stereo or Handsfree

6 MOBILE PHONE, GPS, SR10

- 6.1 Mobile Phone Call Making and Answering
- 6.2 Speed Dialing (SC1 Advanced Only)
- 6.3 GPS Navigation
- 6.4 Sena SR10, Two-Way Radio Adapter

7 STEREO MUSIC

- 7.1 Bluetooth Stereo Music
- 7.2 Music Sharing (SC1 Advanced only)

8 INTERCOM

- 8.1 Intercom Pairing
- 8.2 Two-way Intercom
- 8.3 Three-way Intercom
- 8.4 Four-way Intercom
- 8.5 Team Signal (SC1 Advanced Only)

9 THREE-WAY CONFERENCE PHONE CALL WITH INTERCOM PARTICIPANT

10 GROUP INTERCOM

11 UNIVERSAL INTERCOM

- 11.1 Universal Intercom Pairing
- 11.2 Two-way Universal Intercom
- 11.3 Three-way Universal Intercom
- 11.4 Four-way Universal Intercom

12 FM RADIO

- 12.1 FM Radio On and Off
- 12.2 Seek Frequencies
- 12.3 Preset Stations
- 12.4 FM Sharing
- 12.5 Region Selection

13 FUNCTION PRIORITY

14 CONFIGURATION SETTING

- 14.1 Headset Configuration Setting
- 14.2 Software Configuration Setting

15 REMOTE CONTROL

16 FIRMWARE UPGRADE

17 TROUBLESHOOTING

- 17.1 Intercom Failure
- 17.2 Intercom Reconnection
- 17.3 Factory Reset

18 QUICK OPERATION REFERENCE

CERTIFICATION AND SAFETY APPROVALS

- FCC Compliance Statement
- FCC RF Exposure Statement
- FCC Caution
- CE Declaration of Conformity
- Industry Canada Statement
- Bluetooth License
- WEEE (Waste Electrical and Electronic Equipment)

Safety Precautions

Please ensure that the product is properly used by observing the warnings and cautions below to prevent any risk and/or damage to property.

Product Storage and Management

- Keep the product free of dust. It may damage mechanical and electronic parts of the product.
- Do not store the product in high temperatures as this may reduce the life span of electronic devices, damage the battery, and/or melt plastic parts of the product.
- Do not store the product in cold temperatures. Abrupt changes in temperatures may cause condensation and damage electronic circuits.
- Do not clean the product with cleaning solvents, toxic chemicals, or strong detergents as this may damage the product.
- Do not paint the product. Paint may obstruct moving parts or interfere with the normal operation of the product.
- Do not drop or otherwise shock the product. It may damage the product or its internal electronic circuits.
- Do not disassemble, repair or modify the product as this may damage the product and invalidate the product warranty.
- Do not store the product in humid environments, especially for long time storage.

Product Use

- In some regions, it is prohibited by law to ride motorcycles while wearing headsets or earbuds. Therefore be certain to comply with all relevant laws in the region before using the product.
- The headset is for motorcycle helmets only. To install the headset, you must follow the installation instructions shown in the User's Guide.
- Use of the product at a high volume for a long period of time may damage your eardrums or hearing ability. Keep the volume at a modest level to prevent damage.
- Do not cause impact to the product or touch it with sharp tools as this may damage the product.
- Do not use the product in high-temperatures or apply heat to the product as this may cause damage, explosion, or fire.
- Keep product away from pets or small children. It may damage the product.
- In any place where wireless communication is prohibited, such as hospitals or airplanes, turn off the power and refrain from using the product. In a place where wireless communication is prohibited, electromagnetic waves may cause hazards or accidents.
- Do not use the product near hazardous explosives. When it is near any explosion hazards, turn off the power and heed any regulations, instructions, and signs in the area.
- When using the product, be certain to conform to laws regarding the use of communications devices while riding.
- Do not put the product where it may hamper the rider's vision or manipulate it while riding. This may cause traffic accidents.
- Before riding, fasten the product to the helmet, and double-check that it is fastened. Separation of the product while riding may cause damage to the product or accidents.
- If the product is damaged, stop using it immediately. It may cause damage, explosion, or fire.

Battery

This product has a replaceable rechargeable battery inside. Therefore, when using the product, make sure to adhere to the following:

- The battery performance may be reduced over time with usage.
- Any 3rd party USB charger can be used with Sena products if the charger is approved by either the FCC, CE, IC or other locally approved agencies that Sena accepts. Use of a non-approved charger may cause fire, explosion, leakage, and other hazards may also reduce the life time or performance of the battery.
- Store the battery at temperatures of 15°C ~ 25°C (59°F ~ 77°F). Higher or lower temperatures may reduce the capacity and life of the battery, or may cause temporary non-operation. Do not use the product in sub-zero temperature, because it may cause serious reduction of the battery performance.
- If you apply heat to the battery or throw it into fire, it may explode.
- Do not use the product with a damaged battery. It may explode and/or cause accidents.
- Never use a damaged charger. It may explode and/or cause accidents.
- Battery life may vary depending on conditions, environmental factors, functions of the product in use, and devices used with it.

1 INTRODUCTION

Thank you for choosing the SCHUBERTH SC1. With the SC1, you can call handsfree on your Bluetooth mobile phone, listen to stereo music or voice instructions of GPS navigations wirelessly, and have intercom conversations in full duplex with a passenger or other motorcycle riders.

The SC1 is compliant with the Bluetooth 4.1 supporting the following profiles: Headset Profile, Hands-Free Profile (HFP), Advanced Audio Distribution Profile (A2DP), and Audio Video Remote Control Profile (AVRCP). Please check with the manufacturers of other device to determine their compatibility with this headset.

Please read this User's Guide carefully before using the headset.

The SC1 features:

- Bluetooth 4.1
- Invisible beauty with custom design
- Bluetooth intercom up to 1.0 kilometer (0.6 miles)*
- Audio Multitasking (SC1 Advanced only)
- Audio Source Priority
- Four-way intercom
- Voice prompts
- Smartphone App for iPhone and Android
- Built-in FM radio tuner with a station scan and save function (SC1 Advanced only)
- Universal Intercom™
- Music sharing (SC1 Advanced only)
- Advanced Noise Control™
- Firmware upgradeable

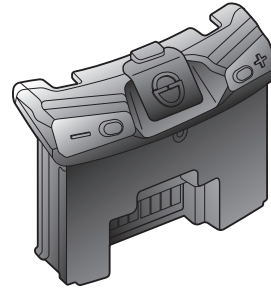
.....
* in open terrain

Key Specifications:

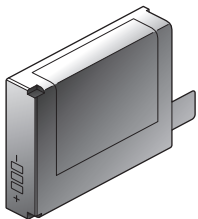
- Bluetooth 4.1
- Supporting profiles: Headset Profile, Hands-Free Profile (HFP), Advanced Audio Distribution Profile (A2DP), and Audio Video Remote Control Profile (AVRCP).

2 PACKAGE CONTENTS

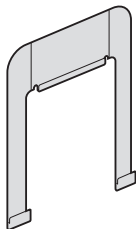
- **SC1 Main Unit**



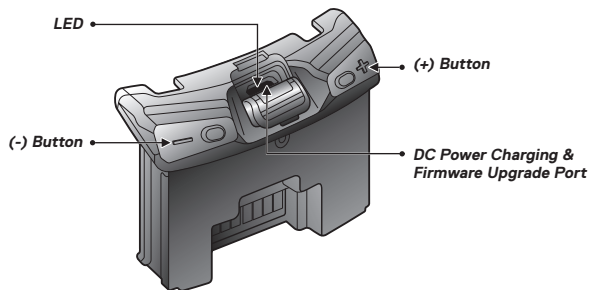
• **Battery**



• **Release Tool**

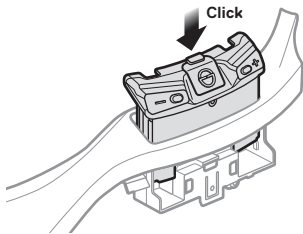


3 INSTALLING THE SC1 ON YOUR HELMET

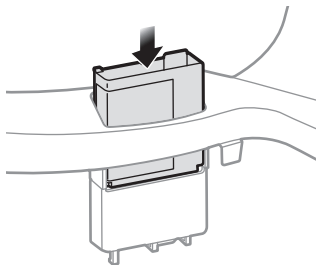


3.1 Installing the SC1

1. Insert the main unit into the helmet and push it gently until you hear a click.

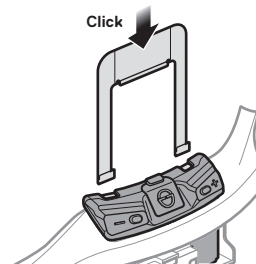


2. Insert the battery into the helmet and push it gently until it is all the way in.

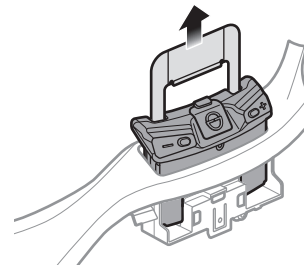


3.2 Taking out the SC1

1. Insert the release tool into the main unit and push it gently until you hear a click.

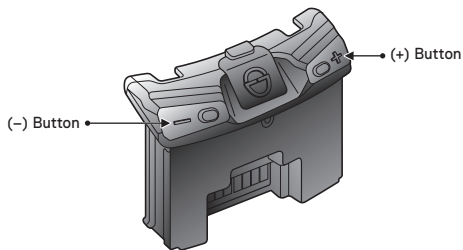


2. Pull the release tool until the main unit comes off the helmet.



4 GETTING STARTED

4.1 Button Operation

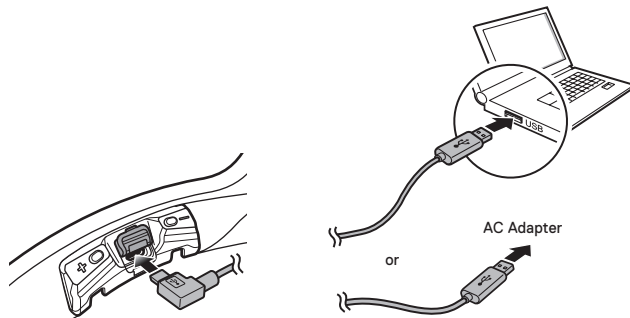


4.2 Powering On and Off

To power on the headset, press and hold the (+) Button and the (-) Button at the same time for 1 second while hearing ascending beeps and a voice prompt, **“Hello”**. To power off the headset, press and hold the (+) Button and the (-) Button at the same time for 3 seconds while hearing descending beeps and a voice prompt, **“Goodbye”**.

4.3 Charging

You can charge the headset by connecting the supplied USB power & data cable into a computer’s USB port or USB wall charger. You can use any standard micro USB cable to charge the unit. The LED turns red while charging and turns blue when fully charged. It takes about 2.5 hours to be completely charged.



Note:

Please make sure to take off your SC1-installed helmet while charging. The headset automatically turns off during charging.

4.4 Checking the Battery Level

4.4.1 LED Indicator

When the headset is powering on, the red LED flashes rapidly indicating the battery level.

4 flashes = High, 70 ~ 100%

3 flashes = Medium, 30 ~ 70%

2 flashes = Low, 0 ~ 30%

4.4.2 Voice Prompt Indicator

When you power on the headset, keep pressing the (+) Button and the (-) Button simultaneously for about 3 seconds until you hear three, high toned beeps. Then you will hear a voice prompt indicating the battery level. However, if you release the buttons as soon as the headset turns on, you will not hear a voice prompt for the battery level indication.

4.5 Volume Adjustment

You can easily adjust the volume by tapping the (+) Button or the (-) Button. You will hear a beep when the volume reaches the maximum or minimum level. The volume is set and maintained independently at different levels for each audio source even when you reboot the headset. For example, once you set the volume for mobile phone handsfree, it will not change even if you adjust the volume for your Bluetooth MP3 music. However, if you adjust the volume during stand-by mode, it will affect volume levels of every audio source.

4.6 Softwares

4.6.1 Device Manager

The Device Manager allows you to upgrade the firmware and configure the device settings directly from your PC. Using this software, you can assign speed dial presets, FM radio frequency presets and more. It is available for both Windows and Mac.

4.6.2 Smartphone App

The Smartphone App allows you to configure device settings and read the User's Guide and the Quick Start Guide. Pair your phone with your SC1 headset (please refer to *section 5.1, "Mobile Phone Pairing - Mobile Phone, Bluetooth Stereo Device"*). Run the Smartphone App and you can configure its settings directly from your smartphone. You can download the Smartphone App for Android or iPhone.

5 PAIRING THE SC1 WITH BLUETOOTH DEVICES

Before using the SC1 Bluetooth headset with any other Bluetooth devices for the first time, you will need to pair them together. You can pair the SC1 with Bluetooth mobile phones, Bluetooth stereo devices such as MP3 players, or motorcycle specific Bluetooth GPS navigation, and with other Sena Bluetooth headsets. The pairing operation is required only once for each Bluetooth device. The headset remains paired with the devices and automatically reconnects to them when they are within range. You will hear a high toned single beep and a voice prompt whenever the headset reconnects to the paired device: **"Phone connected"** to a mobile phone, **"Media connected"** to a Bluetooth stereo device.

5.1 Mobile Phone Pairing - Mobile Phone, Bluetooth Stereo Device

1. Press and hold the (+) Button or the (-) Button for 10 seconds until you hear the voice prompt, **“Configuration menu”**.
2. Tap the (+) Button until you hear a voice prompt, **“Phone pairing”**.
3. Search for Bluetooth devices on your mobile phone. Select the SC1 in the list of the devices detected on the mobile phone.
4. Enter 0000 for the PIN. Some mobile phones may not ask for the PIN.
5. The mobile phone confirms that pairing has completed and the SC1 is ready to use. You will hear a voice prompt, **“Your headset is paired”**.
6. If the pairing process is not completed within three minutes, the SC1 will return to stand-by mode.

Note:

1. If a Bluetooth connection between the headset and a mobile phone is disconnected, press the (+) Button for 3 seconds until you hear a high tone single beep to recover the Bluetooth connection immediately.
2. If the Bluetooth connection between the headset and a media player is disconnected, press the (+) Button for 1 second to recover the Bluetooth connection and play.

5.2 Second Mobile Phone Pairing - Second Mobile Phone, GPS, and SR10

Typical Bluetooth headsets can connect with only one Bluetooth device, but a second mobile phone pairing allows the headset to connect with another Bluetooth device such as a second mobile phone, an MP3 Player, or the Sena SR10, the Bluetooth adapter.

1. To enter the voice configuration menu, press and hold the (+) Button or the (-) Button for 10 seconds until you hear the voice prompt, **“Configuration menu”**.
2. Tap the (+) Button until you hear a voice prompt, **“Second mobile phone pairing”**.
3. Search for Bluetooth devices on your mobile phone. Select the SC1 in the list of the devices detected on the mobile phone.
4. Enter 0000 for the PIN. Some mobile phones may not ask for the PIN.
5. The mobile phone confirms that the pairing has completed and the SC1 is ready to use. You will hear a voice prompt, **“Your headset is paired”**.

Note:

- 1. If you have two audio (A2DP) devices connected to your headset then the audio from one device will interrupt the audio from the other device. For example, if you are playing music from the primary mobile phone, then it can be interrupted by playing music from the secondary mobile phone and vice versa.*
- 2. You have to use a motorcycle specific GPS, which transmits turn-by-turn voice instructions to the headset by Bluetooth. Most automotive GPS systems do not have this feature.*
- 3. The Sena SR10 is a Bluetooth two-way radio adapter for group communication, and uses Hands-Free Profile. The incoming audio from the two-way radio via SR10 is heard in the background while having an intercom conversation or a mobile phone call.*
- 4. The GPS navigation or a radar detector could be connected to the SR10 by wire. The GPS voice instruction or the radar detector alarm is also heard in the background via SR10 while having an intercom conversation or a phone call. Please refer to the SR10 User's Guide for details.*

5.3 Advanced Selective Pairing - A2DP Stereo or Handsfree

When you are using a smartphone, sometimes you may need to selectively use the SC1 for A2DP stereo music only or for mobile phone handsfree only. These instructions are for advanced users who want to pair the SC1 to their smartphones with only one selective profile: A2DP for stereo music or HFP for phone calls.

If you have previously paired a mobile phone to the SC1, you must clear the previous pairing list on both devices: the mobile phone and the SC1. To clear the pairing list on the SC1, please do a factory reset or following the pairing list clearing procedure described in *section 14.1.10, "Factory Reset"* or *14.1.7, "Delete All Bluetooth Pairing Information"*. To clear the pairing list on the mobile phone, please refer to the mobile phone manual. For most smartphones, delete the SC1 from the list of Bluetooth devices in the settings menu.

5.3.1 A2DP Stereo Music Only

1. To enter the voice configuration menu, press and hold the (+) Button or the (-) Button for 10 seconds until you hear the voice prompt, **“Configuration menu”**.
2. Tap the (+) Button until you hear the voice prompt, **“Media selective pairing”**.
3. Search for Bluetooth devices on your smartphone. Select the SC1 in the list of devices detected on your phone.
4. Enter 0000 for the PIN. Some mobile phones may not ask for the PIN.

5.3.2 HFP for Phone Call Only

1. To enter the voice configuration menu, press and hold the (+) Button or the (-) Button for 10 seconds until you hear the voice prompt, **“Configuration menu”**.
2. Tap the (+) Button until you hear the voice prompt, **“Phone selective pairing”**.
3. Search for Bluetooth devices on your smartphone. Select the SC1 in the list of devices detected on your phone.
4. Enter 0000 for the PIN. Some mobile phones may not ask for the PIN.

6 MOBILE PHONE, GPS, SR10

6.1 Mobile Phone Call Making and Answering

1. When you have an incoming call, tap the (+) Button to answer the call.
2. You can also answer the incoming call by loudly speaking any word of your choice if *Voice Activated Phone Answering (VOX Phone)* is enabled, unless you are connected to intercom.
3. To end a call, press the (+) Button for 2 seconds until you hear a mid-tone single beep, or wait for the called person to end the call.
4. To reject a call, press the (+) Button for 2 seconds until you hear a beep while the phone is ringing.
5. There are several ways to make a phone call:
 - Enter numbers on your mobile phone's keypad and make a call. Then the call is automatically transferred to the headset.
 - In stand-by mode, press the (+) Button for 3 seconds, to activate the voice dialing of your mobile phone. For this, the voice dialing function must be available on the mobile phone. Refer to your mobile phone manual for further instruction.

Note:

1. If you have two phones connected to your headset and you have an incoming call from the second phone during the call of the first phone, then you may still receive the call from the second phone. In this case, the call from the first phone is on waiting mode. If you end a call, then it will automatically guide you to the first phone call.
2. If you have a mobile phone and a GPS connected to your headset, you may not be able to listen to the GPS voice instruction during the phone call.

6.2 Speed Dialing (SC1 Advanced Only)

You can quickly make a phone call by using the voice speed dial menu.

1. To enter into the voice speed dial menu, press and hold the (+) Button for 5 seconds and you will hear a mid-tone single beep and a voice prompt saying **“Speed dial”**.
2. Tap the (+) Button to navigate between the menus. You will hear voice prompts for each menu item.
3. Tap the (-) Button to select a voice menu among the followings:

(1) Last number redial

(2) Speed dial 1

(3) Speed dial 2

(4) Speed dial 3

(5) Cancel

4. After selecting the last number redial menu, you will hear a voice prompt, **“Last number redial”**. Then, to redial the last phone call number, tap the (-) Button.
5. To call one of the speed dials, tap the (+) Button to navigate between the menus until you hear a voice prompt saying **“Speed dial (#)”**. Then, tap the (-) Button.
6. If you want to exit the speed dial immediately, tap the (+) Button until you hear a voice prompt saying **“Cancel”**, and tap the (-) Button. If you do not press any button within 15 seconds, the SC1 will exit the voice speed dial menu and go back to stand-by mode.

Note:

1. Make sure that you connect the mobile phone and the headset to use the speed dial function.
2. You need to assign speed dial numbers before using the speed dial (please refer to section 14.2.1, “Speed Dial (SC1 Advanced only)”).

6.3 GPS Navigation

6.3.1 GPS Pairing

1. To enter the voice configuration menu, press and hold the (+) Button or the (-) Button for 10 seconds until you hear the voice prompt, **“Configuration menu”**.
2. Tap the (+) Button until you hear a voice prompt, **“GPS pairing”**.
3. Search for Bluetooth devices on the GPS navigation. Select the SC1 in the list of the devices detected on the GPS.
4. Enter 0000 for the PIN. Some GPS navigations may not ask for the PIN.
5. The mobile phone confirms that the pairing has completed and the SC1 is ready to use. You will hear a voice prompt, **“Your headset is paired”**.

Note:

When Audio Multitasking is enabled, if you pair your GPS device via GPS Pairing, its instructions will not interrupt your intercom conversations, but will overlay with them.

6.4 Sena SR10, Two-Way Radio Adapter

You can use a two-way radio and the SC1 Bluetooth intercom simultaneously by using the Sena SR10, a Bluetooth Two-way Radio Adapter (please refer to *section 5.2, “Second Mobile Phone Pairing - Second Mobile Phone, GPS, and SR10”*). Incoming audio from the two-way radio will not interrupt an intercom conversation but is heard in the background. This is useful when you have an intercom conversation with a passenger on the back seat and use a two-way radio for group communication with other motorcycle riders.

7 STEREO MUSIC

7.1 Bluetooth Stereo Music

The Bluetooth audio device must be paired with the SC1 by following the “*Mobile Phone Pairing - Mobile Phone, Bluetooth Stereo Device*” procedures described in the *section 5.1*. The SC1 supports the Audio/Video Remote Control Profile (AVRCP), so if your Bluetooth audio device also supports the AVRCP, you can use the SC1 to remotely control music playback. Not only can you adjust the volume but you can also use functions such as play, pause, next track and previous track.

1. To play or pause music, press the (+) Button for 1 second until you hear a double beep.
2. To adjust the volume, tap the (+) Button or the (-) Button.
3. To track forward or track back, press and hold the (+) Button or the (-) Button for 2 seconds until you hear a mid-tone single beep.

7.2 Music Sharing (SC1 Advanced only)

You can start sharing music with an intercom friend using Bluetooth stereo music during a two-way intercom conversation (please refer to *section 8.2, “Two-way Intercom”*). When you terminate music sharing, you can go back to the intercom conversation. To start or terminate sharing music, press the (+) Button for 1 second during an intercom conversation until you hear a double beep. To track forward or track back, press and hold the (+) Button or the (-) Button for 2 seconds.

Note:

1. *Both you and your intercom friend can remotely control music playback such as track forward and track back.*
2. *Music sharing will be paused when you are using your mobile phone or listening to GPS instructions.*
3. *When Audio Multitasking is enabled, if an intercom call is made when you are listening to music, music sharing will not work.*

8 INTERCOM

To enter the intercom pairing mode, call intercom friends, or start group intercom, you must enter the intercom menu by pressing the (-) Button for 1 second. If you perform any action within the intercom menu, you will automatically exit from the menu.

Intercom Functions	Button Operation
Enter intercom menu	Press the (-) Button for 1 second
- Enter intercom pairing mode	Tap the (+) Button
- Call first intercom friend	Tap the (-) Button
- Call second intercom friend	Double tap the (-) Button
- Call third intercom friend	Triple tap the (-) Button
- Start Group Intercom	Press the (-) Button for 1 second
- Exit intercom menu	Press the (+) Button for 3 seconds

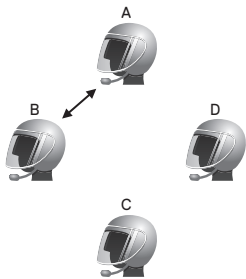
8.1 Intercom Pairing

8.1.1 Pairing with Other SC1 Headsets for Intercom Conversation

The SC1 can be paired with up to three other headsets for Bluetooth intercom conversation.

1. Turn on the two SC1 headsets (A and B) that you would like to pair with each other.
2. Press and hold the (-) Button for 1 second on both devices to enter the intercom menu.
3. Tap the (+) Button once on both devices, and you will hear a mid-tone single beep and the voice prompt, **“Intercom pairing”**.

- Simply tap the (+) Button of any one of the two headsets A or B and wait until the LEDs of both headsets turn to blue and intercom connection is automatically established. The two SC1 headsets A and B are paired with each other for intercom conversation. If the pairing process is not completed within one minute, the SC1 will return to stand-by mode.



Pairing A & B

- You can make other pairing between headsets A and C, and between headsets A and D by following the same procedure as above.

- The intercom pairing queue is '**Last-Come, First-Served**'. If a headset has multiple paired headsets for intercom conversations, the last paired headset is set as **first intercom friend**. The previous intercom friend becomes **second intercom friend**, and **third intercom friend**.

Note:

*For example, after the pairing procedures listed above, headset D is the **first intercom friend** of headset A. Headset C is the **second intercom friend** of headset A, and headset B is the **third intercom friend** of headset A.*

8.1.2 Pairing with Other Sena Headset Models for Intercom Conversation

The SC1 can be paired with all other Sena headset models such as the SC10U for intercom conversation. Please follow the same procedure as above to pair with these headset models.

8.2 Two-way Intercom

8.2.1 Starting Two-way Intercom

You can start an intercom conversation with one of any intercom friends by tapping the (-) Button within the intercom menu. Press and hold the (-) Button for 1 second to enter the intercom menu. Tap the (-) Button once to intercom with the **first intercom friend**, tap the (-) Button twice to intercom with the **second intercom friend**, and tap the (-) Button three times to intercom with the **third intercom friend**.

8.2.2 Ending Two-way Intercom

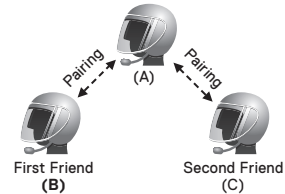
You can end an intercom conversation by using tapping the (-) Button within the intercom menu. Press and hold the (-) Button for 1 second to enter the intercom menu. Tap the (-) Button once to end intercom with the **first intercom friend**, tap the (-) Button twice to end intercom with the **second intercom friend**, and tap the (-) Button three times to end intercom with the **third intercom friend**.

8.3 Three-way Intercom

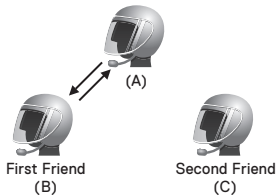
8.3.1 Starting Three-way Intercom

You (A) can have a three-way conference intercom with two other SC1 friends (B & C) by establishing two intercom connections simultaneously. While a three-way conference intercom is in progress, mobile phone connection of all three participants is temporarily disconnected. However, as soon as the conference intercom terminates or one of the participants leaves the intercom, all mobile phones automatically reconnect to their headsets. If you have an incoming mobile phone call during the conference intercom, terminate the conference intercom to automatically reconnect and receive the phone call.

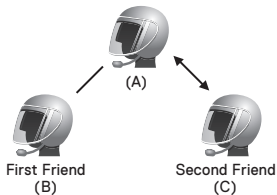
1. You (A) need to be paired with two other friends (B & C) for three-way conference intercom.



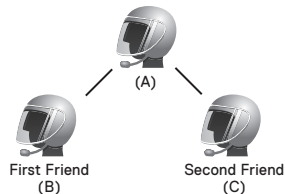
2. Start an intercom conversation with one of the two friends in your intercom group. For example, you (A) may start an intercom conversation with the intercom friend (B). Or intercom friend (B) may start an intercom call with you (A).



3. You (A) can call the second intercom friend (C) by double tapping the (-) Button within the intercom menu, or the second intercom friend (C) may join the intercom by making an intercom call to you (A).



4. Now you (A) and two SC1 intercom friends (B & C) are having a three-way conference intercom.



8.3.2 Ending Three-way Intercom

You can completely terminate the conference intercom or just disconnect an intercom connection with one of your active intercom friends.

1. Press and hold the (-) Button for 3 seconds until you hear a beep to terminate three-way conference intercom completely. It terminates both intercom connections with (B) and (C).
2. Tap or double tap the (-) Button within the intercom menu to disconnect intercom connection with one of the two intercom friends accordingly. For example by single tapping the (-) Button within the intercom menu, you can terminate the intercom connection with just the first intercom friend (B). However, you still have the intercom connection with your second intercom friend (C).

8.4 Four-way Intercom

8.4.1 Starting Four-way Intercom

You can have four-way conference intercom with three other SC1 users by adding one more intercom participant to the three-way intercom. While you are having a three-way intercom as above in *section 8.3, "Three-way Intercom"*, a new participant (D), who is an intercom friend of your intercom friend (C), may join the conference intercom by making an intercom call to your intercom friend (C). Please note that in this case, the new participant (D) is an intercom friend of (C), not of you (A).

8.4.2 Ending Four-way Intercom

As same in the case of three-way intercom, you can completely get out of the four-way conference intercom or just disconnect a single intercom connection.

1. Press and hold the (-) Button for 3 seconds until you hear a beep to terminate four-way conference intercom. It terminates the intercom connections between you (A), and your intercom friends (B) and (C).

2. Tap or double tap the (-) Button within the intercom menu to disconnect the intercom connection with one of the two intercom friends accordingly. However, when you disconnect the second friend (C) by double tapping the (-) Button within the intercom menu, you will be disconnected with the third participant (D) as well. This is because the third participant (D) is connected with you via the second friend (C).

Note:

Multiple headsets are connected during multi-way intercom. With various signals interfering each other, the intercom distance of multi-way intercom is relatively shorter than that of two-way intercom.

8.5 Team Signal (SC1 Advanced Only)

You can search for your team by sending a team signal. If there is a teammate within the signal range, you will hear a bell sound. Tap the (+) Button and the (-) Button to send a team signal.

9 THREE-WAY CONFERENCE PHONE CALL WITH INTERCOM PARTICIPANT

1. When you have an incoming mobile phone call during an intercom conversation, you will hear a ring tone. You can choose whether to *1) answer the mobile phone call and stop the intercom conversation, or 2) reject the phone call and stay on the intercom conversation.*
 - 1) To answer the phone call and stop the intercom conversation, tap the (+) Button. The VOX Phone feature does not work if you are connected to intercom. When you hang up the phone call, the intercom will automatically be recovered.
 - 2) To reject the phone call and stay on the intercom conversation, press the (+) Button for 2 seconds until you hear a beep.

Unlike other motorcycle Bluetooth headsets, this prevents a user from being dropped out of an intercom conversation by an incoming mobile call.

2. When you have an incoming intercom call during a mobile phone call, you will hear 4 high toned beeps, alerting you that there is an incoming intercom call. You will also hear a voice prompt, **“Intercom requested”**. In this case, the intercom call does not override the mobile call because intercom has lower priority than mobile call. You have to hang up the mobile phone call to make or receive an intercom call.
3. You can have a three-way conference phone call by adding an intercom friend to the mobile phone conversation. During a mobile phone conversation, tap the (-) Button within the intercom menu to invite one of the intercom friends to the mobile phone line. To disconnect the intercom or the phone call, you must wait for the other caller to hang up or end the intercom conversation.

10 GROUP INTERCOM

Group Intercom allows you to instantly create a multi-way conference intercom with three other most recently paired headsets.

1. Go through intercom pairing with up to three headsets you want to have Group Intercom with.
2. Press and hold the (-) Button for 1 second within the intercom menu to begin Group Intercom. The LED will flash blue and red simultaneously and you will hear a voice prompt, **“Group intercom”**.
3. To terminate Group Intercom, press the (-) Button for 3 seconds during Group Intercom. You will hear a voice prompt, **“Group intercom terminated”**.

Note:

Group Intercom supports SC1, SC10U, 10Upad, 10U, 10C, 10R, 10S, 20S, and Tufftalk only. Other headsets will be excluded from Group Intercom.

11 UNIVERSAL INTERCOM

You can have an intercom conversation with non-Sena Bluetooth headsets using the Universal Intercom function. Non-Sena Bluetooth headsets can be connected to the Sena Bluetooth headset if they support the Bluetooth Hands-Free Profile (HFP). The working distance may differ depending on the performance of Bluetooth headset that it is connected to. In general, it is shorter than normal intercom distance since it uses the Bluetooth Hands-Free Profile. The Universal Intercom affects both the phone call connection and the multipoint connection (mostly used for GPS connections for riders). You cannot use a multipoint connection device while you are using the Universal Intercom in case as below.

1. If a non-Sena headset does not support a multipoint connection, it cannot use a phone call connection while using the Universal Intercom.
2. As for Sena headsets, the Universal Intercom affects the multipoint connection.
3. If non-Sena headset (already paired as Universal Intercom with Sena) is turned on, then the multipoint connection is automatically deactivated. And the non-Sena headset is automatically connected to Sena headset as a Universal Intercom. So you cannot use multipoint connection devices such as GPS, while a non-Sena headset is turned on.
4. Even though you disconnect the non-Sena headset as a Universal Intercom, it will not automatically restore the multipoint connection. To restore the multipoint connection, you should turn off the non-Sena headset first, then try to connect to multipoint device manually from the device screen or simply reboot the device so that it automatically connects to the Sena headset.

11.1 Universal Intercom Pairing

The SC1 can be paired with non-Sena Bluetooth headsets for Bluetooth intercom conversation. You can pair the SC1 with only one non-Sena Bluetooth headset so if you pair with a different non-Sena Bluetooth headset, the previous pairing will be removed.

1. Turn on the SC1 and a non-Sena Bluetooth headset that you want to pair with.
2. Press and hold the (+) Button or the (-) Button for 10 seconds to enter the configuration menu. Tap the (+) Button until you hear a voice prompt, **“Universal intercom pairing”**. Tap the (-) Button to enter into Universal Intercom Pairing mode and the blue LED will flash rapidly and you will hear multiple beeps. Please refer to *section 14.1.9, “Universal Intercom Pairing”* for more details.
3. Perform the operation required for handsfree pairing on the non-Sena Bluetooth headset (refer to the User’s Manual for the headsets you want to use). The SC1 will automatically pair with a non-Sena Bluetooth headset when each are in pairing mode.

11.2 Two-way Universal Intercom

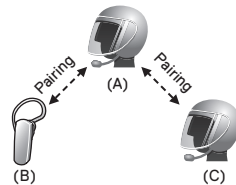
You can initiate the Universal Intercom connection with non-Sena Bluetooth headsets using the same intercom connection method as you would between other Sena headsets. Within the intercom menu, you may single tap the (-) Button to begin an intercom conversation with the first intercom friend, double tap with the second intercom friend, and triple tap with the third intercom friend.

Non-Sena Bluetooth headsets may initiate the Universal Intercom connection, by activating the voice dialer or using the redialing operation. You may also disconnect the existing connection by using the operation to end a call (refer to *the User's Manual for the headsets* for voice dialer, redialing, and ending a call).

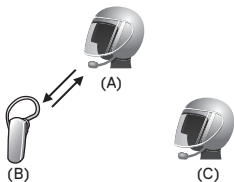
11.3 Three-way Universal Intercom

You may make a three-way Universal Intercom connection with two SC1s and one non-Sena Bluetooth headset. If the intercom connection is made, all headsets connected cannot use the mobile phone call function since the connection between the headset and the phone is disconnected temporarily. If you disconnect the intercom call, the mobile phone connection is made again automatically so that you can use a mobile phone call function.

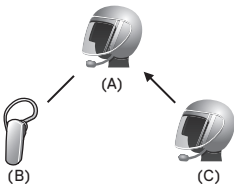
1. You (A) need to be paired with a non-Sena Bluetooth headset (B) and another SC1 headset (C) for the three-way conference intercom.



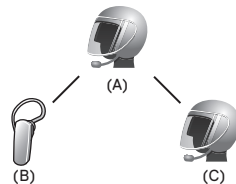
2. Start an intercom conversation with non-Sena Bluetooth headset (B) in your intercom group. For example, you (A) may start an intercom conversation with non-Sena Bluetooth headset (B). The non-Sena Bluetooth headset (B) may also start an intercom call with you (A).



3. The other SC1 (C) may join the intercom by making an intercom call to you (A).



4. Now you (A), non-Sena Bluetooth headset (B), and the other SC1 (C) are having a three-way conference intercom.



5. You may disconnect three-way Universal Intercom by pressing and holding the (-) Button for 3 seconds.

11.4 Four-way Universal Intercom

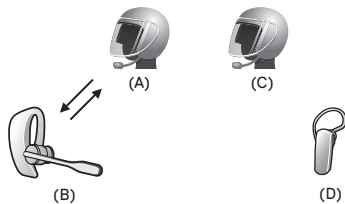
You may make a four-way Universal Intercom connection with a couple of different configurations, 1) *three SC1s and one non-Sena Bluetooth headset* or 2) *two SC1s and two non-Sena Bluetooth headsets*.

You may have a couple of other Four-way Universal Intercom configurations, 1) *your headset (A), a non-Sena Bluetooth headset (B), another SC1 (C), and a non-Sena Bluetooth headset (D)*, 2) *your headset (A), a non-Sena Bluetooth headset (B), and two other SC1 headsets (C and D)*. You may make the four-way Universal Intercom call the same way as a normal four-way intercom call.

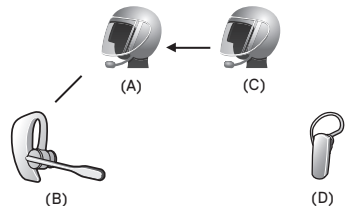
11.4.1 Four-way Universal Intercom Case 1

Two SC1 headsets (A and C) and two non-Sena Bluetooth headsets (B and D).

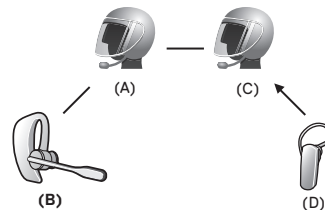
1. You (A) may start an intercom conversation with the non-Sena Bluetooth headset (B).



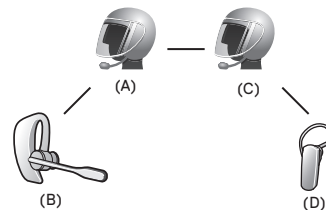
2. The other SC1 (C) may join the intercom by making an intercom call to you (A).



3. The non-Sena Bluetooth headset (D) may join the conference intercom by making an intercom call to the SC1 (C).



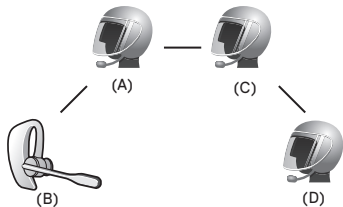
4. Now two SC1 headsets (A & C) and two non-Sena Bluetooth headsets (B & D) are connected with the four-way Universal Intercom.



You may disconnect a four-way Universal Intercom using the same way as you do in a normal four-way intercom. Please refer to *section 8.4.2, "Ending Four-way Intercom"*.

11.4.2 Four-way Universal Intercom Case 2

Three SC1 headsets (A, C and D) and one non-Sena Bluetooth headset (B). The procedure is the same as case 1 described in *section 11.4.1*.



12 FM RADIO

FM Radio is supported by SC1 Advanced only.

12.1 FM Radio On and Off

To turn on the FM radio, press the (-) Button for 5 seconds until you hear a mid-toned double beep sound. You will then hear a voice prompt, **“FM on”**. To turn off the FM radio, press the (-) Button for 5 seconds until you hear a voice prompt, **“FM off”**. When you power it off, the SC1 will remember the last station frequency. When you power it on, the last station frequency will be playing.

12.2 Seek Frequencies

To search the next radio station, press and hold the (+) Button for 1 second.

12.3 Preset Stations

You can listen to preset stations while listening to the FM radio. Press the (+) Button for 3 seconds to go upward to your next saved preset station.

Note:

1. You can save FM stations to presets before using FM radio. Connect the SC1 to your PC and open the Device Manager. It allows you to save up to 10 FM station frequency presets on the SC1 settings menu. You may do the same operation by using the Smartphone App.
2. You can still answer an incoming phone call and intercom while listening to the FM radio.

12.4 FM Sharing

You can listen to the radio during the intercom conversation. To start FM sharing, press and hold the (-) Button for 5 seconds during the intercom conversation. During FM sharing, you can move to the next preset station and you or your friend on the intercom can change frequencies. If either person changes the frequency, the other will listen to the same frequency. To terminate FM sharing, press and hold the (-) Button for 5 seconds or end the intercom call.

Note:

1. FM sharing will be terminated if the headset starts a multi-way intercom conference.
2. When Audio Multitasking is enabled, if an intercom call is made while you are listening to the FM radio, FM sharing will not work.

12.5 Region Selection

You can select the proper FM frequency region from the Device Manager. With the region setting, you may optimize the seek function to avoid unnecessary frequency ranges.

Region	Frequency Range	Step
Worldwide	76.0 ~ 108.0 MHz	± 100 kHz
Americas	87.5 ~ 107.9 MHz	± 200 kHz
Asia	87.5 ~ 108.0 MHz	± 100 kHz
Australia	87.5 ~ 107.9 MHz	± 200 kHz
Europe	87.5 ~ 108.0 MHz	± 100 kHz
Japan	76.0 ~ 95.0 MHz	± 100 kHz

13 FUNCTION PRIORITY

The SC1 operates in the following order of priority:

(highest)	Mobile phone
	Intercom/FM sharing
	Music sharing by Bluetooth stereo music
	Bluetooth stereo music
(lowest)	FM radio

A lower priority function is always interrupted by a higher priority function.

Note:

If you select music as the audio source priority, the order of priority will change as below:

(highest)	Mobile phone
	Bluetooth stereo music
	Intercom/FM sharing
	Music sharing by Bluetooth stereo music
(lowest)	FM radio

14 CONFIGURATION SETTING

14.1 Headset Configuration Setting

You can set the configuration of the SC1 by the voice menu instruction described below.

1. To enter into voice configuration menu, press and hold the (+) Button or the (-) Button for 10 seconds until the LED shows solid blue and you hear high toned double beeps. You will also hear a voice prompt, **“Configuration menu”**.
2. Tap the (+) Button to navigate between the menus. You will hear voice prompts for each menu item as below.
3. You can enable/disable a feature or execute a command by tapping the (-) Button.
4. If no button is pressed within 10 seconds, the SC1 will exit the configuration and go back to stand-by mode.
5. If you want to exit the configuration immediately, tap the (+) Button until you hear a voice prompt, **“Exit configuration”**, and tap the (-) Button.



- Intercom pairing *
- Phone pairing
- Second mobile phone pairing
- GPS pairing
- Phone selective pairing
- Media selective pairing
- Delete all pairings
- Remote control pairing
- Universal intercom pairing
- Factory reset
- Exit configuration

.....
* SC1 Advanced only

14.1.1 Intercom Pairing (SC1 Advanced only)

Voice Prompt	“Intercom pairing”
Factory Default	N/A

To enter into intercom pairing mode, tap the (+) Button until you hear a voice prompt, **“Intercom pairing”**. Then tap the (-) Button to enter into intercom pairing mode. Once two headsets are in intercom pairing mode, tap the (+) Button of any one of the two headsets and soon the intercom connection will automatically be established. The headset will exit from the configuration menu.

14.1.2 Mobile Phone Pairing

Voice Prompt	“Phone pairing”
Factory Default	N/A

To go into mobile phone pairing mode, tap the (+) Button until you hear the voice prompt, **“Phone pairing”**. Please refer to *section 5.1, “Mobile Phone Pairing - Mobile Phone, Bluetooth Stereo Device”* for details on mobile phone pairing. If you tap the (+) Button, you can exit from the phone pairing mode.

14.1.3 Second Mobile Phone Pairing

Voice Prompt	“Second mobile phone pairing”
Factory Default	N/A

To go into second mobile phone pairing mode, tap the (+) Button until you hear the voice prompt, **“Second mobile phone pairing”**. Please refer to *section 5.2, “Second Mobile Phone Pairing - Second Mobile Phone, GPS, and SR10”* for details on second mobile phone pairing. If you tap the (+) Button, you can exit from the second mobile phone pairing mode.

14.1.4 GPS Pairing

Voice Prompt	“GPS pairing”
Factory Default	N/A

To go into GPS pairing mode, tap the (+) Button until you hear the voice prompt, **“GPS pairing”**. Please refer to *section 6.3, “GPS Navigation”* for details on GPS pairing.

14.1.5 Phone Selective Pairing

Voice Prompt	“Phone selective pairing”
Factory Default	N/A

To go into phone selective pairing mode, tap the (+) Button until you hear the voice prompt, **“Phone selective pairing”**. Please refer to *section 5.3.2, “HFP for Phone Call Only”* for details on phone selective pairing. If you tap the (+) Button, you can exit from the phone selective pairing mode.

14.1.6 Media Selective Pairing

Voice Prompt	“Media selective pairing”
Factory Default	N/A

To go into media selective pairing mode, tap the (+) Button until you hear the voice prompt, **“Media selective pairing”**. Please refer to *section 5.3.1, “A2DP Stereo Music Only”* for details on media selective pairing. If you tap the (+) Button, you can exit from the media selective pairing mode.

14.1.7 Delete All Bluetooth Pairing Information

Voice Prompt	“Delete all pairings”
Factory Default	N/A
Execute	Tap the (-) Button

To delete all Bluetooth pairing information of the SC1, tap the (+) Button until you hear a voice prompt, **“Delete all pairings”**, and tap the (-) Button to confirm.

14.1.8 Remote Control Pairing

Voice Prompt	“Remote control pairing”
Factory Default	N/A
Execute	Tap the (-) Button

To enter into Remote Control Pairing mode, tap the (+) Button until you hear a voice prompt, **“Remote control pairing”**. Then tap the (-) Button to enter into Remote Control Pairing mode. The headset will automatically exit from the configuration menu.

14.1.9 Universal Intercom Pairing

Voice Prompt	“Universal intercom pairing”
Factory Default	N/A
Execute	Tap the (-) Button

To enter into Universal Intercom Pairing mode, tap the (+) Button until you hear a voice prompt, **“Universal intercom pairing”**. Then tap the (-) Button to enter into Universal Intercom Pairing mode. The headset will automatically exit from the configuration menu.

14.1.10 Factory Reset

Voice Prompt	“Factory reset”
Factory Default	N/A
Execute	Tap the (-) Button

To restore factory default settings on the SC1, tap the (+) Button until you hear a voice prompt, **“Factory reset”**, and tap the (-) Button to confirm. The SC1 powers off with a voice prompt, **“Headset reset, goodbye”**.

14.1.11 Exit Voice Configuration Menu

Voice Prompt	“Exit configuration”
Factory Default	N/A
Execute	Tap the (-) Button

To exit voice configuration menu and get back to stand-by mode, tap the (+) Button until you hear a voice prompt, **“Exit configuration”**, and tap the (-) Button to confirm.

14.2 Software Configuration Setting

You can change the settings of the headset through the Device Manager or the Smartphone App.

14.2.1 Speed Dial (SC1 Advanced only)

Assign phone numbers for speed dialing to make a phone call quickly.

14.2.2 Audio Source Priority (Default: Intercom)

Audio Source Priority allows you to select the priority between the intercom and music (which includes GPS app instructions and message notifications) from a smartphone. If the intercom is selected as the audio source priority, your music will be interrupted during an intercom conversation. If music is selected as the audio source priority, intercom conversations will be interrupted while your music is heard.

Note:

Audio Source Priority is active only when Audio Multitasking is disabled.

14.2.3 Audio Boost (Default: Disable)

Enabling Audio Boost increases the overall maximum volume. Disabling Audio Boost reduces the overall maximum volume, but delivers more balanced sound.

14.2.4 VOX Phone (Default: Enable)

If this feature is enabled, you can answer incoming calls by voice. When you hear a ringtone for an incoming call, you can answer the phone by saying a word such as **“Hello”** loudly or by blowing air into the microphone. VOX phone is temporarily disabled if you are connected to intercom. If this feature is disabled, you have to tap the (+) Button to answer an incoming call.

14.2.5 VOX Intercom (Default: Disable)

If this feature is enabled, you can initiate an intercom conversation with the last connected intercom friend by voice. When you want to start intercom, say a word such as **“Hello”** loudly or blow air into the microphone. If you start an intercom conversation by voice, the intercom terminates automatically when you and your intercom friend remain silent for 20 seconds. However, if you manually start an intercom conversation by tapping the (-) Button, you have to terminate the intercom conversation manually.

However, if you start intercom by voice and end it manually by pressing and holding the (-) Button for 3 seconds, you will not be able to start intercom by voice temporarily. In this case, you have to tap the (-) Button within the intercom menu to restart the intercom. This is to prevent repeated unintentional intercom connections by strong wind noise. After rebooting the SC1, you can start intercom by voice again.

14.2.6 HD Voice (Default: Disable)

HD Voice allows you to communicate in high-definition during phone calls. This feature increases the quality so that the audio will be crisp and clear during phone call conversations. If this feature is enabled, incoming phone calls will interrupt intercom conversations and audio from the SR10 will not be heard during intercom conversations. Three-Way Conference Phone Call with Intercom Participant will not be available if HD Voice is enabled.

Note:

1. Refer to the manufacturer of your Bluetooth device that will be connected to the headset to see if it supports HD Voice.
2. HD Voice is active only when Audio Multitasking is disabled.

14.2.7 Smart Volume Control (Default: Disable)

Smart Volume Control automatically changes the level of the speaker volume based on the level of the environmental noise. You can enable it by setting the sensitivity to low, medium, or high. Smart Volume Control responds to smaller environmental noises as the sensitivity level becomes higher.

14.2.8 HD Intercom (Default: Enable)

HD Intercom enhances the two-way intercom audio from normal quality to HD quality. HD Intercom will become temporarily disabled when you enter into a multi-way intercom. If this feature is disabled, the two-way intercom audio will change to normal quality.

Note:

1. *The intercom distance of HD Intercom is relatively shorter than that of normal intercom.*
2. *HD intercom is active only when Audio Multitasking is disabled.*

14.2.9 VOX Sensitivity (Default: Medium)

The sensitivity can be adjusted depending on your riding environment.

14.2.10 Voice Prompts (Default: Enable)

You can disable voice prompts by software configuration settings, but the following voice prompts are always on.

- Headset configuration settings menu, battery level indicator, speed dial, FM radio functions

14.2.11 RDS AF Setting (Default: Disable) (SC1 Advanced only)

Radio Data System (RDS) Alternative Frequency (AF) Setting allows a receiver to re-tune to the second frequency location when the first signal becomes too weak. With RDS AF enabled on the receiver, a radio station with more than one frequency can be used.

14.2.12 FM Station Guide (Default: Enable) (SC1 Advanced only)

When FM Station Guide is enabled, FM station frequencies are given by voice prompts as you select preset stations. When FM Station Guide is disabled, the voice prompts on FM station frequencies will not be given as you select preset stations.

14.2.13 Advanced Noise Control™ (Default: Enable)

When Advanced Noise Control is enabled, the background noise is reduced during an intercom conversation. When it is disabled, the background noise is mixed with your voice during intercom.

14.2.14 Audio Multitasking™ (Default: Disable) (SC1 Advanced Only)

Audio Multitasking allows you to hear the audio from two features simultaneously. When Audio Multitasking is enabled, phone calls, GPS instructions and intercom conversations can be overlaid with audio from the FM radio, music or GPS app instructions from a smartphone in the background with reduced volume. Increasing or decreasing the volume of the audio in the foreground will also increase or decrease the volume of the overlaid audio in the background. The volume of the foreground audio can be adjusted using the headset. How much background audio that is heard can be adjusted using the Smartphone App. HD Intercom, HD Voice and Audio Source Priority become disabled temporarily when Audio Multitasking is enabled.

Model	Foreground*			Background**	
	Phone	GPS	Intercom	FM Radio	Music or Smart Navi
SC1 Advanced	○ ^A	○ ^A			
		○	○		
			○ ^B	○	○ ^B
		○ ^C		○ ^C	○

Foreground and Background Combination Table

* Two audio sources in the foreground can be heard simultaneously with the same volume level.

** Only one background source can be heard at a time while listening to an audio source in the foreground.

- A. GPS instructions can be heard during phone calls and the volume level of both audio sources can be adjusted using the headset.
- B. GPS app directions will be heard in the background during intercom conversations.
- C. The FM radio will be heard in the background when GPS instructions are heard.

Note:

1. *Audio Multitasking will be activated during two-way intercom conversations with a headset that also supports this feature.*
2. *When Audio Multitasking is disabled, the background audio source will return to its independent volume level.*
3. *For Audio Multitasking to work properly, you need to power the headset off and on. Please restart the headset.*
4. *Some GPS devices may not support this feature.*

14.2.15 Background Volume (Default: Level 5) (SC1 Advanced Only)

The Background Volume can be adjustable only when the Audio Multitasking turns on. Level 9 is the highest volume and 0 is the lowest.

15 REMOTE CONTROL

You can remotely control the SC1 via Bluetooth using the Remote Control (sold separately). This eliminates the need to take off your hand for button operations. Your SC1 and the Remote Control must be paired together before use.

1. Turn on the SC1 and the Remote Control.
2. Press the (+) Button or the (-) Button for 10 seconds to enter the configuration menu. Tap the (+) Button until you hear a voice prompt saying, **“Remote control pairing”**. Press the (-) Button to enter into Remote Control Pairing mode and the red LED will flash rapidly and you will hear multiple beeps. Please refer to *section 14.1.8, “Remote Control Pairing”* for more details.
3. Enter Bluetooth pairing mode on your Remote Control. The SC1 will automatically perform pairing with the Remote Control in pairing mode. You will hear a voice prompt, **“Remote control connected”**, when they are successfully connected.

16 FIRMWARE UPGRADE

The SC1 supports firmware upgrades. You can update the firmware using the Device Manager (please refer to *section 4.6.1, “Device Manager”*).

17 TROUBLESHOOTING

17.1 Intercom Failure

When you try to start an intercom conversation with an intercom friend who is unavailable within range or already having a conference intercom with other riders or a mobile phone call, you will hear a low tone double beep signifying an intercom busy signal. In this case, you have to try again later.

17.2 Intercom Reconnection

If your intercom friend goes out of range while having an intercom conversation, you may hear static noise and eventually the intercom will be disconnected. In this case, the SC1 automatically tries to reconnect the intercom every 8 seconds and you will hear high tone double beeps until the intercom is reestablished. If you do not want to make a reconnection, press and hold the (-) Button for 1 second to stop the attempt.

17.3 Factory Reset

If you want to restore the headset to factory default settings, use the Factory Reset in the configuration menu. The headset automatically restores the default settings and turns off. Please refer to *section 14.1.10, "Factory Reset"* for more details.

18 QUICK OPERATION REFERENCE

Type	Function	Button Command	LED	Beep
Basic Function	Power on	Press the (+) Button and the (-) Button for 1 second	Solid blue	Ascending beeps
	Power off	Press the (+) Button and the (-) Button for 1 second	Solid red	Descending beeps
	Volume adjustment	Tap the (+) Button or the (-) Button	-	-
Mobile Phone	Answer mobile phone call	Tap the (+) Button	-	-
	End mobile phone call	Press the (+) Button for 2 seconds	-	-
	Voice dial	Press the (+) Button for 3 seconds	-	-
	Speed dial	Press the (+) Button for 5 seconds	-	Mid-tone single beep
	Reject incoming call	Press the (+) Button for 2 seconds	-	-

Type	Function	Button Command	LED	Beep
Intercom	Intercom pairing	Press the (-) Button for 1 second on both devices	-	-
		Tap the (+) Button on both devices	Red flashing	Mid-tone single beep
		Tap the (+) Button of any one of the two headsets		
	Start/End each intercom	Press the (-) Button for 1 second	-	-
		Tap the (-) Button	-	Mid-tone double beeps
	End all intercoms	Press the (-) Button for 3 seconds	-	Mid-tone double beeps
	Start Group Intercom	Press the (-) Button for 1 second	-	-
Press the (-) Button for 1 second		Blue and red flashing	-	
End Group Intercom	Press the (-) Button for 3 seconds	-	-	
Music	Play/Pause Bluetooth music	Press the (+) Button for 1 second	-	Mid-tone double beeps
	Track forward/back	Press the (+) Button or the (-) Button for 2 seconds	-	-

Type	Function	Button Command	LED	Beep
FM Radio	FM radio on/off	Press the (-) Button for 5 seconds	-	Mid-tone double beeps
	Select preset	Press the (+) Button for 3 seconds	-	Mid-tone single beep
	Seek up	Press the (+) Button for 1 second	-	High tone triple beeps

CERTIFICATION AND SAFETY APPROVALS

FCC Compliance Statement

This device complies with part 15 of the FCC rules. Operation is subject to the following two conditions:

- (1) This device may not cause harmful interference, and
- (2) This device must accept any interference received, including interference that may cause undesired operation.

This equipment has been tested and found to comply with the limits for a Class B digital device pursuant to part 15 of the FCC rules. These limits are designed to provide reasonable protection against harmful interference in a residential installation. This equipment generates, uses and can radiate radio frequency energy and, if not installed and used in accordance with the instructions, may cause harmful interference to radio communications. However, there is no guarantee that interference will not occur in a particular installation. If this equipment does cause harmful interference to radio or television reception, which can be determined by turning the equipment on and off, the user is encouraged to try to correct the interference by one or more of the following measures:

- Reorient or relocate the receiving antennae
- Increase the separation between the equipment and the receiver

- Connect the equipment into an outlet on a circuit different from that to which the receiver is connected
- Consult the dealer or an experienced radio/TV technician for help


FCC RF Exposure Statement

This product is compliance to FCC RF Exposure requirements and refers to FCC search for FCC ID: S7A-SP35

FCC Caution

Any changes or modifications to the equipment not expressly approved by the party responsible for compliance could void user's authority to operate the equipment.

CE Declaration of Conformity

 This product is CE marked according to the provisions of the Radio Equipment Directive (2014/53/EU). Hereby, Sena declares that the radio equipment type SP35 is in compliance with Directive 2014/53/EU.

This device can be operated in at least one Member State without infringing applicable requirements on the use of radio spectrum.

Product: SC1

Model: SP35

RF Range for Bluetooth: 2402 ~ 2480 MHz

Max Output Power(E.I.R.P.)for Bluetooth: 17.98 dBm

Industry Canada Statement

This radio transmitter (identify the device by certification number) has been approved by Industry Canada to operate with the antenna types listed below with the maximum permissible gain indicated. Antenna types not included in this list, having a gain greater than the maximum gain indicated for that type, are strictly prohibited for use with this device.

This device complies with Industry Canada license-exempt RSS standard(s). Operation is subject to the following two conditions:

- (1) This device may not cause interference.
- (2) This device must accept any interference, including interference that may cause undesired operation of the device.

Bluetooth License

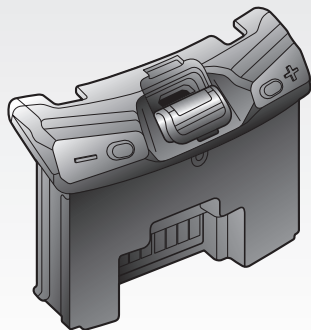
The Bluetooth® word mark and logos are owned by the Bluetooth SIG, Inc. and any use of such marks by Sena is under license. Other trademarks and trade names are those of their respective owners.

The product is compliant with and adopts the Bluetooth® Specification 4.1 and has successfully passed all interoperability tests that are specified in the Bluetooth® specification. However, interoperability between the device and other Bluetooth®-enabled products is not guaranteed.

WEEE (Waste Electrical and Electronic Equipment)



The crossed-out wheel bin symbol on the product, literature, or packaging reminds you that all electrical and electronic products, batteries, and accumulators must be taken to separate collection at the end of their working life. This requirement applies to the European Union and other locations where separate collection systems are available. To prevent possible harm to the environment or human health from uncontrolled waste disposal, please do not dispose of these products as unsorted municipal waste, but hand it in at an official collection point for recycling.



SCHUBERTH SC1



CONTENTS

- 1 INTRODUCTION**
- 2 PACKAGE CONTENTS**
- 3 INSTALLING THE SC1 ON YOUR HELMET**
 - 3.1 Installing the SC1
 - 3.2 Taking out the SC1
- 4 GETTING STARTED**
 - 4.1 Button Operation
 - 4.2 Powering On and Off
 - 4.3 Charging
 - 4.4 Checking the Battery Level
 - 4.5 Volume Adjustment
 - 4.6 Softwares
- 5 PAIRING THE SC1 WITH BLUETOOTH DEVICES**
 - 5.1 Mobile Phone Pairing - Mobile Phone, Bluetooth Stereo Device
 - 5.2 Second Mobile Phone Pairing - Second Mobile Phone, GPS, and SR10
 - 5.3 Advanced Selective Pairing - A2DP Stereo or Handsfree
- 6 MOBILE PHONE, GPS, SR10**
 - 6.1 Mobile Phone Call Making and Answering
 - 6.2 Speed Dialing (SC1 Advanced Only)
 - 6.3 GPS Navigation
 - 6.4 Sena SR10, Two-Way Radio Adapter
- 7 STEREO MUSIC**
 - 7.1 Bluetooth Stereo Music
 - 7.2 Music Sharing (SC1 Advanced only)
- 8 INTERCOM**
 - 8.1 Intercom Pairing
 - 8.2 Two-way Intercom
 - 8.3 Three-way Intercom
 - 8.4 Four-way Intercom
 - 8.5 Team Signal (SC1 Advanced Only)
- 9 THREE-WAY CONFERENCE PHONE CALL WITH INTERCOM PARTICIPANT**
- 10 GROUP INTERCOM**
- 11 UNIVERSAL INTERCOM**
 - 11.1 Universal Intercom Pairing
 - 11.2 Two-way Universal Intercom
 - 11.3 Three-way Universal Intercom
 - 11.4 Four-way Universal Intercom
- 12 FM RADIO**
 - 12.1 FM Radio On and Off
 - 12.2 Seek Frequencies
 - 12.3 Preset Stations
 - 12.4 Region Selection
- 13 FUNCTION PRIORITY**

14 CONFIGURATION SETTING

- 14.1 Intercom Pairing (SC1 ADVANCED only)
- 14.2 Mobile Phone Pairing
- 14.3 Second Mobile Phone Pairing
- 14.4 Phone selective pairing
- 14.5 Media Selective Pairing
- 14.6 Assigning Speed Dial
- 14.7 Enabling/Disabling Audio Boost
- 14.8 Enabling/Disabling Voice Activated Phone Answering
- 14.9 Enabling/Disabling Voice Activated Intercom
- 14.10 Setting Smart Volume Control
- 14.11 Enabling/Disabling HD Intercom
- 14.12 Setting Intercom VOX Sensitivity
- 14.13 Enabling/Disabling Voice Prompts
- 14.14 Enabling/Disabling RDS AF
- 14.15 Enabling/Disabling Advanced Noise Control™
- 14.16 Delete All Bluetooth Pairing Information
- 14.17 Remote Control Pairing
- 14.18 Universal Intercom Pairing
- 14.19 Factory Reset
- 14.20 Exit Voice Configuration Menu

15 REMOTE CONTROL

16 FIRMWARE UPGRADE

17 TROUBLESHOOTING

- 17.1 Intercom Failure
- 17.2 Intercom Reconnection
- 17.3 Factory Reset

18 QUICK OPERATION REFERENCE

CERTIFICATION AND SAFETY APPROVALS

- FCC Compliance Statement
- FCC RF Exposure Statement
- FCC Caution
- CE Declaration of Conformity
- Industry Canada Statement
- Bluetooth License
- WEEE (Waste Electrical and Electronic Equipment)

SAFETY INFORMATION

- Product Storage and Management
- Product Use
- Battery

1 INTRODUCTION

Thank you for choosing the SCHUBERTH SC1. With the SC1, you can call handsfree on your Bluetooth mobile phone, listen to stereo music or voice instructions of GPS navigations wirelessly, and have intercom conversations in full duplex with a passenger or other motorcycle riders.

The SC1 is compliant with the Bluetooth 4.1 supporting the following profiles: Headset Profile, Hands-Free Profile (HFP), Advanced Audio Distribution Profile (A2DP), and Audio Video Remote Control Profile (AVRCP). Please check with the manufacturers of other device to determine their compatibility with this headset.

Please read this User's Guide carefully before using the headset. Also check for the latest version of the User's Guide and additional information related to SCHUBERTH Bluetooth products.

The SC1 features:

- ♦ Bluetooth 4.1
- ♦ Invisible beauty with custom design
- ♦ Bluetooth intercom with distance more than 1 kilometer for SC1 Advanced and up to 1 kilometer for SC1 Standard*
- ♦ Four-way intercom
- ♦ Voice prompts
- ♦ Smartphone App for iPhone and Android
- ♦ Built-in FM radio tuner with a station scan and save function (SC1 Advanced only)
- ♦ Universal Intercom™
- ♦ Music sharing (SC1 Advanced only)
- ♦ Advanced Noise Control™
- ♦ Firmware upgradeable

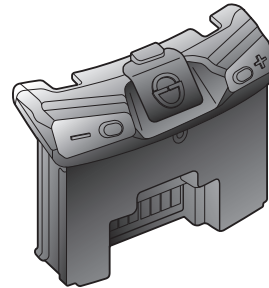
.....
* in open terrain

Key Specifications:

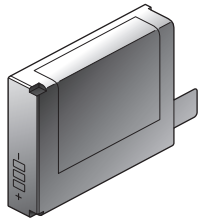
- Bluetooth 4.1
- Supporting profiles: Headset Profile, Hands-Free Profile (HFP), Advanced Audio Distribution Profile (A2DP), and Audio Video Remote Control Profile (AVRCP).

2 PACKAGE CONTENTS

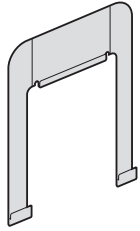
- **SC1 Main Unit**



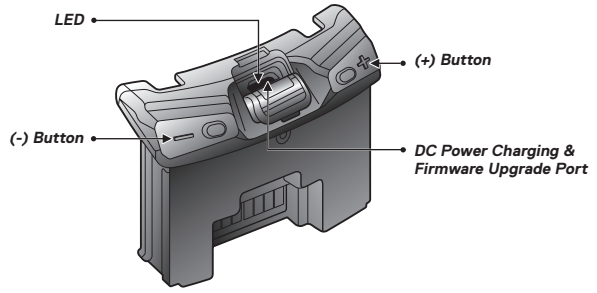
• **Battery**



• **Release Tool**

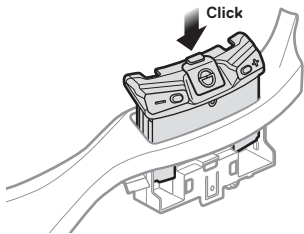


3 INSTALLING THE SC1 ON YOUR HELMET

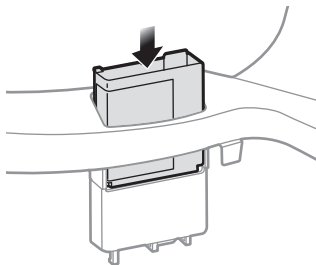


3.1 Installing the SC1

1. Insert the main unit into the helmet and push it gently until you hear a click.

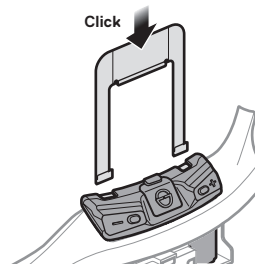


2. Insert the battery into the helmet and push it gently until it is all the way in.

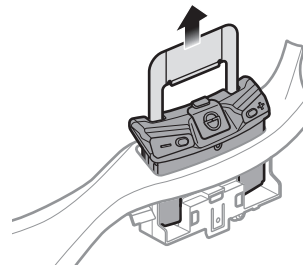


3.2 Taking out the SC1

1. Insert the release tool into the main unit and push it gently until you hear a click.

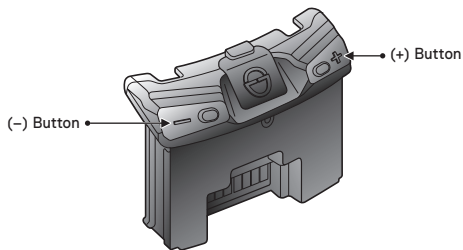


2. Pull the release tool until the main unit comes off the helmet.



4 GETTING STARTED

4.1 Button Operation

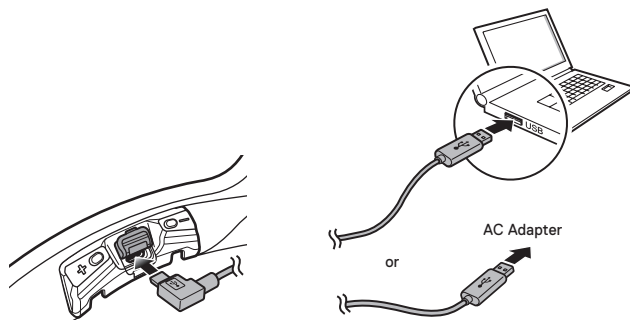


4.2 Powering On and Off

To power on the headset, press and hold the (+) Button and the (-) Button at the same time for 1 second while hearing ascending beeps and a voice prompt, **“Hello”**. To power off the headset, press and hold the (+) Button and the (-) Button at the same time for 3 seconds while hearing descending beeps and a voice prompt, **“Goodbye”**.

4.3 Charging

You can charge the headset by connecting the supplied USB power & data cable into a computer’s USB port or USB wall charger. You can use any standard micro USB cable to charge the unit. The LED turns red while charging and turns blue when fully charged. It takes about 2.5 hours to be completely charged.



Note:

Please make sure to take off your SC1-installed helmet while charging. The headset automatically turns off during charging.

4.4 Checking the Battery Level

4.4.1 LED Indicator

When the headset is powering on, the red LED flashes rapidly indicating the battery level.

4 flashes = High, 70 ~ 100%

3 flashes = Medium, 30 ~ 70%

2 flashes = Low, 0 ~ 30%

4.4.2 Voice Prompt Indicator

When you power on the headset, keep pressing the (+) Button and the (-) Button simultaneously for about 3 seconds until you hear three, high toned beeps. Then you will hear a voice prompt indicating the battery level. However, if you release the buttons as soon as the headset turns on, you will not hear a voice prompt for the battery level indication.

4.5 Volume Adjustment

You can easily adjust the volume by tapping the (+) Button or the (-) Button. You will hear a beep when the volume reaches the maximum or minimum level. The volume is set and maintained independently at different levels for each audio source even when you reboot the headset. For example, once you set the volume for mobile phone handsfree, it will not change even if you adjust the volume for your Bluetooth MP3 music. However, if you adjust the volume during stand-by mode, it will affect volume levels of every audio source.

4.6 Softwares

4.6.1 Device Manager

The Device Manager allows you to upgrade the firmware and configure the device settings directly from your PC. Using this software, you can assign speed dial presets, FM radio frequency presets and more. It is available for both Windows and Mac.

4.6.2 Smartphone App

The Smartphone App allows you to configure device settings and read the User's Guide and the Quick Start Guide. Pair your phone with your SC1 headset (please refer to *section 5.1, "Mobile Phone Pairing - Mobile Phone, Bluetooth Stereo Device"*). Run the Smartphone App and you can configure its settings directly from your smartphone.

5 PAIRING THE SC1 WITH BLUETOOTH DEVICES

Before using the SC1 Bluetooth headset with any other Bluetooth devices for the first time, you will need to pair them together. You can pair the SC1 with Bluetooth mobile phones, Bluetooth stereo devices such as MP3 players, or motorcycle specific Bluetooth GPS navigation, and with other Sena Bluetooth headsets. The pairing operation is required only once for each Bluetooth device. The headset remains paired with the devices and automatically reconnects to them when they are within range. You will hear a high toned single beep and a voice prompt whenever the headset reconnects to the paired device: **"Phone connected"** to a mobile phone, **"Media connected"** to a Bluetooth stereo device.

5.1 Mobile Phone Pairing - Mobile Phone, Bluetooth Stereo Device

1. Press and hold the (+) Button or the (-) Button for 10 seconds until you hear the voice prompt, **“Configuration menu”**.
2. Tap the (+) Button until you hear a voice prompt, **“Phone pairing”**.
3. Search for Bluetooth devices on your mobile phone. Select the SC1 in the list of the devices detected on the mobile phone.
4. Enter 0000 for the PIN. Some mobile phones may not ask for the PIN.
5. The mobile phone confirms that pairing has completed and the SC1 is ready to use. You will hear a voice prompt, **“Your headset is paired”**.
6. If the pairing process is not completed within three minutes, the SC1 will return to stand-by mode.

Note:

1. If a Bluetooth connection between the headset and a mobile phone is disconnected, press the (+) Button for 3 seconds until you hear a high tone single beep to recover the Bluetooth connection immediately.
2. If the Bluetooth connection between the headset and a media player is disconnected, press the (+) Button for 1 second to recover the Bluetooth connection and play.

5.2 Second Mobile Phone Pairing - Second Mobile Phone, GPS, and SR10

Typical Bluetooth headsets can connect with only one Bluetooth device, but a second mobile phone pairing allows the headset to connect with another Bluetooth device such as a second mobile phone, an MP3 Player, or the Sena SR10, the Bluetooth adapter.

1. To enter the voice configuration menu, press and hold the (+) Button or the (-) Button for 10 seconds until you hear the voice prompt, **“Configuration menu”**.
2. Tap the (+) Button until you hear a voice prompt, **“Second mobile phone pairing”**.
3. Search for Bluetooth devices on your mobile phone. Select the SC1 in the list of the devices detected on the mobile phone.
4. Enter 0000 for the PIN. Some mobile phones may not ask for the PIN.
5. The mobile phone confirms that the pairing has completed and the SC1 is ready to use. You will hear a voice prompt, **“Your headset is paired”**.

Note:

- 1. If you have two audio (A2DP) devices connected to your headset then the audio from one device will interrupt the audio from the other device. For example, if you are playing music from the primary mobile phone, then it can be interrupted by playing music from the secondary mobile phone and vice versa.*
- 2. You have to use a motorcycle specific GPS, which transmits turn-by-turn voice instructions to the headset by Bluetooth. Most automotive GPS systems do not have this feature.*
- 3. The Sena SR10 is a Bluetooth two-way radio adapter for group communication, and uses Hands-Free Profile. The incoming audio from the two-way radio via SR10 is heard in the background while having an intercom conversation or a mobile phone call.*
- 4. The GPS navigation or a radar detector could be connected to the SR10 by wire. The GPS voice instruction or the radar detector alarm is also heard in the background via SR10 while having an intercom conversation or a phone call. Please refer to the SR10 User's Guide for details.*

5.3 Advanced Selective Pairing - A2DP Stereo or Handsfree

When you are using a smartphone, sometimes you may need to selectively use the SC1 for A2DP stereo music only or for mobile phone handsfree only. These instructions are for advanced users who want to pair the SC1 to their smartphones with only one selective profile: A2DP for stereo music or HFP for phone calls.

If you have previously paired a mobile phone to the SC1, you must clear the previous pairing list on both devices: the mobile phone and the SC1. To clear the pairing list on the SC1, please do a factory reset or following the pairing list clearing procedure described in *section 14.19, "Factory Reset"* or *14.16, "Delete All Bluetooth Pairing Information"*. To clear the pairing list on the mobile phone, please refer to the mobile phone manual. For most smartphones, delete the SC1 from the list of Bluetooth devices in the settings menu.

5.3.1 A2DP Stereo Music Only

1. To enter the voice configuration menu, press and hold the (+) Button or the (-) Button for 10 seconds until you hear the voice prompt, **“Configuration menu”**.
2. Tap the (+) Button until you hear the voice prompt, **“Media selective pairing”**.
3. Search for Bluetooth devices on your smartphone. Select the SC1 in the list of devices detected on your phone.
4. Enter 0000 for the PIN. Some mobile phones may not ask for the PIN.

5.3.2 HFP for Phone Call Only

1. To enter the voice configuration menu, press and hold the (+) Button or the (-) Button for 10 seconds until you hear the voice prompt, **“Configuration menu”**.
2. Tap the (+) Button until you hear the voice prompt, **“Phone selective pairing”**.
3. Search for Bluetooth devices on your smartphone. Select the SC1 in the list of devices detected on your phone.
4. Enter 0000 for the PIN. Some mobile phones may not ask for the PIN.

6 MOBILE PHONE, GPS, SR10

6.1 Mobile Phone Call Making and Answering

1. When you have an incoming call, tap the (+) Button to answer the call.
2. You can also answer the incoming call by loudly speaking any word of your choice if *Voice Activated Phone Answering (VOX Phone)* is enabled, unless you are connected to intercom.
3. To end a call, press the (+) Button for 2 seconds until you hear a mid-tone single beep, or wait for the called person to end the call.
4. To reject a call, press the (+) Button for 2 seconds until you hear a beep while the phone is ringing.
5. There are several ways to make a phone call:
 - Enter numbers on your mobile phone's keypad and make a call. Then the call is automatically transferred to the headset.
 - In stand-by mode, press the (+) Button for 3 seconds, to activate the voice dialing of your mobile phone. For this, the voice dialing function must be available on the mobile phone. Refer to your mobile phone manual for further instruction.

Note:

1. *If you have two phones connected to your headset and you have an incoming call from the second phone during the call of the first phone, then you may still receive the call from the second phone. In this case, the call from the first phone is on waiting mode. If you end a call, then it will automatically guide you to the first phone call.*
2. *If you have a mobile phone and a GPS connected to your headset, you may not be able to listen to the GPS voice instruction during the phone call.*

6.2 Speed Dialing (SC1 Advanced Only)

You can quickly make a phone call by using the voice speed dial menu.

1. To enter into the voice speed dial menu, press and hold the (+) Button for 5 seconds and you will hear a mid-tone single beep and a voice prompt saying **“Speed dial”**.
2. Tap the (+) Button to navigate between the menus. You will hear voice prompts for each menu item.
3. Tap the (-) Button to select a voice menu among the followings:

(1) Last number redial

(4) Speed dial 3

(2) Speed dial 1

(5) Cancel

(3) Speed dial 2

4. After selecting the last number redial menu, you will hear a voice prompt, **“Last number redial”**. Then, to redial the last phone call number, tap the (-) Button.
5. To call one of the speed dials, tap the (+) Button to navigate between the menus until you hear a voice prompt saying **“Speed dial (#)”**. Then, tap the (-) Button.
6. If you want to exit the speed dial immediately, tap the (+) Button until you hear a voice prompt saying **“Cancel”**, and tap the (-) Button. If you do not press any button within 15 seconds, the SC1 will exit the voice speed dial menu and go back to stand-by mode.

Note:

1. *Make sure that you connect the mobile phone and the headset to use the speed dial function.*
2. *You need to assign speed dial numbers before using the speed dial (please refer to section 14.6, “Assigning Speed Dial”).*

6.3 GPS Navigation

If you pair a Bluetooth GPS to the SC1 as described in *section 5.2, "Second Mobile Phone Pairing - Second Mobile Phone, GPS, and SR10"*, you can listen to GPS instructions wirelessly. Tap the (+) Button or the (-) Button to adjust volume. The GPS voice instruction interrupts intercom conversation but it is automatically reestablished after the GPS voice instruction ends.

6.4 Sena SR10, Two-Way Radio Adapter

You can use a two-way radio and the SC1 Bluetooth intercom simultaneously by using the Sena SR10, a Bluetooth Two-way Radio Adapter (please refer to *section 5.2, "Second Mobile Phone Pairing - Second Mobile Phone, GPS, and SR10"*). Incoming audio from the two-way radio will not interrupt an intercom conversation but is heard in the background. This is useful when you have an intercom conversation with a passenger on the back seat and use a two-way radio for group communication with other motorcycle riders.

7 STEREO MUSIC

7.1 Bluetooth Stereo Music

The Bluetooth audio device must be paired with the SC1 by following the *"Mobile Phone Pairing - Mobile Phone, Bluetooth Stereo Device"* procedures described in the *section 5.1*. The SC1 supports the Audio/Video Remote Control Profile (AVRCP), so if your Bluetooth audio device also supports the AVRCP, you can use the SC1 to remotely control music playback. Not only can you adjust the volume but you can also use functions such as play, pause, next track and previous track.

1. To play or pause music, press the (+) Button for 1 second until you hear a double beep.
2. To adjust the volume, tap the (+) Button or the (-) Button.
3. To track forward or track back, press and hold the (+) Button or the (-) Button for 2 seconds until you hear a mid-tone single beep.

7.2 Music Sharing (SC1 Advanced only)

You can start sharing music with an intercom friend using Bluetooth stereo music during a two-way intercom conversation (please refer to *section 8.2, "Two-way Intercom"*). When you terminate music sharing, you can go back to the intercom conversation. To start or terminate sharing music, press the (+) Button for 1 second during an intercom conversation until you hear a double beep. To track forward or track back, press and hold the (+) Button or the (-) Button for 2 seconds.

Note:

1. *Both you and your intercom friend can remotely control music playback such as track forward and track back.*
2. *Music sharing will be paused when you are using your mobile phone or listening to GPS instructions.*

8 INTERCOM

To enter the intercom pairing mode, call intercom friends, or start group intercom, you must enter the intercom menu by pressing the (-) Button for 1 second. If you perform any action within the intercom menu, you will automatically exit from the menu.

Intercom Functions	Button Operation
Enter intercom menu	Press the (-) Button for 1 second
- Enter intercom pairing mode	Tap the (+) Button
- Call first intercom friend	Tap the (-) Button
- Call second intercom friend	Double tap the (-) Button
- Call third intercom friend	Triple tap the (-) Button
- Start Group Intercom	Press the (-) Button for 1 second
- Exit intercom menu	Press the (+) Button for 3 seconds

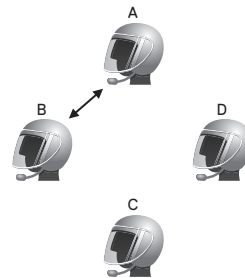
8.1 Intercom Pairing

8.1.1 Pairing with Other SC1 Headsets for Intercom Conversation

The SC1 can be paired with up to three other headsets for Bluetooth intercom conversation.

1. Turn on the two SC1 headsets (A and B) that you would like to pair with each other.
2. Press and hold the (-) Button for 1 second to enter the intercom menu.
3. Tap the (+) once, and you will hear a mid-tone single beep and the voice prompt, **“Intercom pairing”**.

4. Simply tap the (+) Button of any one of the two headsets A or B and wait until the LEDs of both headsets turn to blue and intercom connection is automatically established. The two SC1 headsets A and B are paired with each other for intercom conversation. If the pairing process is not completed within one minute, the SC1 will return to stand-by mode.



Pairing A & B

5. You can make other pairing between headsets A and C, and between headsets A and D by following the same procedure as above.

- The intercom pairing queue is '**Last-Come, First-Served**'. If a headset has multiple paired headsets for intercom conversations, the last paired headset is set as **first intercom friend**. The previous intercom friend becomes **second intercom friend**, and **third intercom friend**.

Note:

For example, after the pairing procedures listed above, headset D is the **first intercom friend** of headset A. Headset C is the **second intercom friend** of headset A, and headset B is the **third intercom friend** of headset A.

8.1.2 Pairing with Other Sena Headset Models for Intercom Conversation

The SC1 can be paired with all other Sena headset models such as the SC10U for intercom conversation. Please follow the same procedure as above to pair with these headset models.

8.2 Two-way Intercom

8.2.1 Starting Two-way Intercom

You can start an intercom conversation with one of any intercom friends by tapping the (-) Button within the intercom menu. Press and hold the (-) Button for 1 second to enter the intercom menu. Tap the (-) Button once to intercom with the **first intercom friend**, tap the (-) Button twice to intercom with the **second intercom friend**, and tap the (-) Button three times to intercom with the **third intercom friend**.

8.2.2 Ending Two-way Intercom

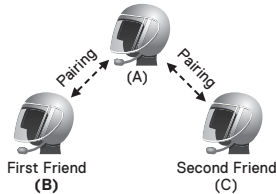
You can end an intercom conversation by using tapping the (-) Button within the intercom menu. Press and hold the (-) Button for 1 second to enter the intercom menu. Tap the (-) Button once to end intercom with the **first intercom friend**, tap the (-) Button twice to end intercom with the **second intercom friend**, and tap the (-) Button three times to end intercom with the **third intercom friend**.

8.3 Three-way Intercom

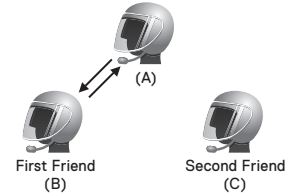
8.3.1 Starting Three-way Intercom

You (A) can have a three-way conference intercom with two other SC1 friends (B & C) by establishing two intercom connections simultaneously. While a three-way conference intercom is in progress, mobile phone connection of all three participants is temporarily disconnected. However, as soon as the conference intercom terminates or one of the participants leaves the intercom, all mobile phones automatically reconnect to their headsets. If you have an incoming mobile phone call during the conference intercom, terminate the conference intercom to automatically reconnect and receive the phone call.

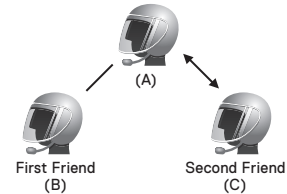
1. You (A) need to be paired with two other friends (B & C) for three-way conference intercom.



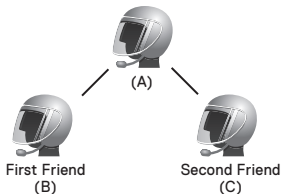
2. Start an intercom conversation with one of the two friends in your intercom group. For example, you (A) may start an intercom conversation with the intercom friend (B). Or intercom friend (B) may start an intercom call with you (A).



3. You (A) can call the second intercom friend (C) by double tapping the (-) Button within the intercom menu, or the second intercom friend (C) may join the intercom by making an intercom call to you (A).



- Now you (A) and two SC1 intercom friends (B & C) are having a three-way conference intercom.



8.3.2 Ending Three-way Intercom

You can completely terminate the conference intercom or just disconnect an intercom connection with one of your active intercom friends.

- Press and hold the (-) Button for 3 seconds until you hear a beep to terminate three-way conference intercom completely. It terminates both intercom connections with (B) and (C).
- Tap or double tap the (-) Button within the intercom menu to disconnect intercom connection with one of the two intercom friends accordingly. For example by single tapping the (-) Button within the intercom menu, you can terminate the intercom connection with just the first intercom friend (B). However, you still have the intercom connection with your second intercom friend (C).

8.4 Four-way Intercom

8.4.1 Starting Four-way Intercom

You can have four-way conference intercom with three other SC1 users by adding one more intercom participant to the three-way intercom. While you are having a three-way intercom as above in *section 8.3, "Three-way Intercom"*, a new participant (D), who is an intercom friend of your intercom friend (C), may join the conference intercom by making an intercom call to your intercom friend (C). Please note that in this case, the new participant (D) is an intercom friend of (C), not of you (A).

8.4.2 Ending Four-way Intercom

As same in the case of three-way intercom, you can completely get out of the four-way conference intercom or just disconnect a single intercom connection.

- Press and hold the (-) Button for 3 seconds until you hear a beep to terminate four-way conference intercom. It terminates the intercom connections between you (A), and your intercom friends (B) and (C).

2. Tap or double tap the (-) Button within the intercom menu to disconnect the intercom connection with one of the two intercom friends accordingly. However, when you disconnect the second friend (C) by double tapping the (-) Button within the intercom menu, you will be disconnected with the third participant (D) as well. This is because the third participant (D) is connected with you via the second friend (C).

Note:

Multiple headsets are connected during multi-way intercom. With various signals interfering each other, the intercom distance of multi-way intercom is relatively shorter than that of two-way intercom.

8.5 Team Signal (SC1 Advanced Only)

You can search for your team by sending a team signal. If there is a teammate within the signal range, you will hear a bell sound. Tap the (+) and the (-) Button to send a team signal.

9 THREE-WAY CONFERENCE PHONE CALL WITH INTERCOM PARTICIPANT

1. When you have an incoming mobile phone call during an intercom conversation, you will hear a ring tone. You can choose whether to 1) answer the mobile phone call and stop the intercom conversation, or 2) reject the phone call and stay on the intercom conversation.
 - 1) To answer the phone call and stop the intercom conversation, tap the (+) Button. The VOX Phone feature does not work if you are connected to intercom. When you hang up the phone call, the intercom will automatically be recovered.
 - 2) To reject the phone call and stay on the intercom conversation, press the (+) Button for 2 seconds until you hear a beep.

Unlike other motorcycle Bluetooth headsets, this prevents a user from being dropped out of an intercom conversation by an incoming mobile call.

2. When you have an incoming intercom call during a mobile phone call, you will hear 4 high toned beeps, alerting you that there is an incoming intercom call. You will also hear a voice prompt, **“Intercom requested”**. In this case, the intercom call does not override the mobile call because intercom has lower priority than mobile call. You have to hang up the mobile phone call to make or receive an intercom call.
3. You can have a three-way conference phone call by adding an intercom friend to the mobile phone conversation. During a mobile phone conversation, tap the (-) Button within the intercom menu to invite one of the intercom friends to the mobile phone line. To disconnect the intercom or the phone call, you must wait for the other caller to hang up or end the intercom conversation.

10 GROUP INTERCOM

Group Intercom allows you to instantly create a multi-way conference intercom with three other most recently paired headsets.

1. Go through intercom pairing with up to three headsets you want to have Group Intercom with.
2. Press and hold the (-) Button for 1 second within the intercom menu to begin Group Intercom. The LED will flash blue and red simultaneously and you will hear a voice prompt, **“Group intercom”**.
3. To terminate Group Intercom, press the (-) Button for 3 seconds during Group Intercom. You will hear a voice prompt, **“Group intercom terminated”**.

Note:

Group Intercom supports SC1, SC10U, 10Upad, 10U, 10C, 10R, 10S, 20S, and Tufftalk only. Other headsets will be excluded from Group Intercom.

11 UNIVERSAL INTERCOM

You can have an intercom conversation with non-Sena Bluetooth headsets using the Universal Intercom function. Non-Sena Bluetooth headsets can be connected to the Sena Bluetooth headset if they support the Bluetooth Hands-Free Profile (HFP). The working distance may differ depending on the performance of Bluetooth headset that it is connected to. In general, it is shorter than normal intercom distance since it uses the Bluetooth Hands-Free Profile. The Universal Intercom affects both the phone call connection and the multipoint connection (mostly used for GPS connections for riders). You cannot use a multipoint connection device while you are using the Universal Intercom in case as below.

1. If a non-Sena headset does not support a multipoint connection, it cannot use a phone call connection while using the Universal Intercom.
2. As for Sena headsets, the Universal Intercom affects the multipoint connection.
3. If non-Sena headset (already paired as Universal Intercom with Sena) is turned on, then the multipoint connection is automatically deactivated. And the non-Sena headset is automatically connected to Sena headset as a Universal Intercom. So you cannot use multipoint connection devices such as GPS, while a non-Sena headset is turned on.
4. Even though you disconnect the non-Sena headset as a Universal Intercom, it will not automatically restore the multipoint connection. To restore the multipoint connection, you should turn off the non-Sena headset first, then try to connect to multipoint device manually from the device screen or simply reboot the device so that it automatically connects to the Sena headset.

11.1 Universal Intercom Pairing

The SC1 can be paired with non-Sena Bluetooth headsets for Bluetooth intercom conversation. You can pair the SC1 with only one non-Sena Bluetooth headset so if you pair with a different non-Sena Bluetooth headset, the previous pairing will be removed.

1. Turn on the SC1 and a non-Sena Bluetooth headset that you want to pair with.
2. Press and hold the (+) Button or the (-) Button for 10 seconds to enter the configuration menu. Tap the (+) Button until you hear a voice prompt, **“Universal intercom pairing”**. Tap the (-) Button to enter into Universal Intercom Pairing mode and the blue LED will flash rapidly and you will hear multiple beeps. Please refer to *section 14.18, “Universal Intercom Pairing”* for more details.
3. Perform the operation required for handsfree pairing on the non-Sena Bluetooth headset (refer to the User’s Manual for the headsets you want to use). The SC1 will automatically pair with a non-Sena Bluetooth headset when each are in pairing mode.

11.2 Two-way Universal Intercom

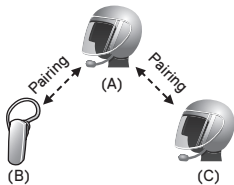
You can initiate the Universal Intercom connection with non-Sena Bluetooth headsets using the same intercom connection method as you would between other Sena headsets. Within the intercom menu, you may single tap the (-) Button to begin an intercom conversation with the first intercom friend, double tap with the second intercom friend, and triple tap with the third intercom friend.

Non-Sena Bluetooth headsets may initiate the Universal Intercom connection, by activating the voice dialer or using the redialing operation. You may also disconnect the existing connection by using the operation to end a call (refer to *the User’s Manual for the headsets* for voice dialer, redialing, and ending a call).

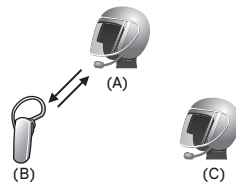
11.3 Three-way Universal Intercom

You may make a three-way Universal Intercom connection with two SC1s and one non-Sena Bluetooth headset. If the intercom connection is made, all headsets connected cannot use the mobile phone call function since the connection between the headset and the phone is disconnected temporarily. If you disconnect the intercom call, the mobile phone connection is made again automatically so that you can use a mobile phone call function.

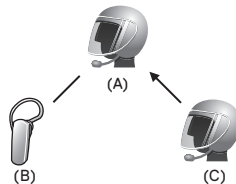
1. You (A) need to be paired with a non-Sena Bluetooth headset (B) and another SC1 headset (C) for the three-way conference intercom.



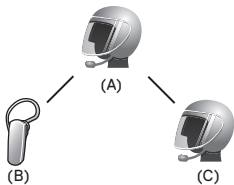
2. Start an intercom conversation with non-Sena Bluetooth headset (B) in your intercom group. For example, you (A) may start an intercom conversation with non-Sena Bluetooth headset (B). The non-Sena Bluetooth headset (B) may also start an intercom call with you (A).



3. The other SC1 (C) may join the intercom by making an intercom call to you (A).



- Now you (A), non-Sena Bluetooth headset (B), and the other SC1 (C) are having a three-way conference intercom.



- You may disconnect three-way Universal Intercom by pressing and holding the (-) Button for 3 seconds.

11.4 Four-way Universal Intercom

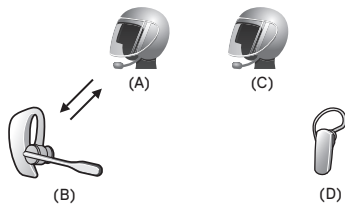
You may make a four-way Universal Intercom connection with a couple of different configurations, 1) *three SC1s and one non-Sena Bluetooth headset* or 2) *two SC1s and two non-Sena Bluetooth headsets*.

You may have a couple of other Four-way Universal Intercom configurations, 1) *your headset (A), a non-Sena Bluetooth headset (B), another SC1 (C), and a non-Sena Bluetooth headset (D)*, 2) *your headset (A), a non-Sena Bluetooth headset (B), and two other SC1 headsets (C and D)*. You may make the four-way Universal Intercom call the same way as a normal four-way intercom call.

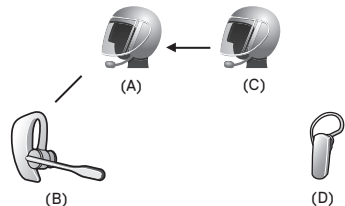
11.4.1 Four-way Universal Intercom Case 1

Two SC1 headsets (A and C) and two non-Sena Bluetooth headsets (B and D).

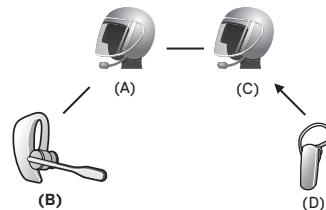
1. You (A) may start an intercom conversation with the non-Sena Bluetooth headset (B).



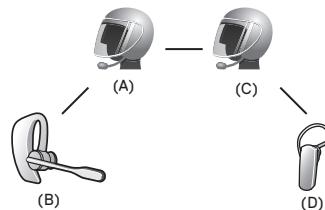
2. The other SC1 (C) may join the intercom by making an intercom call to you (A).



3. The non-Sena Bluetooth headset (D) may join the conference intercom by making an intercom call to the SC1 (C).



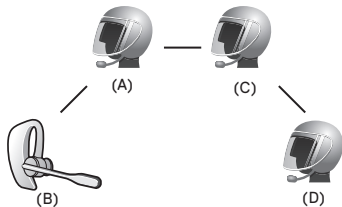
4. Now two SC1 headsets (A & C) and two non-Sena Bluetooth headsets (B & D) are connected with the four-way Universal Intercom.



You may disconnect a four-way Universal Intercom using the same way as you do in a normal four-way intercom. Please refer to *section 8.4.2, "Ending Four-way Intercom"*.

11.4.2 Four-way Universal Intercom Case 2

Three SC1 headsets (A, C and D) and one non-Sena Bluetooth headset (B). The procedure is the same as case 1 described in *section 11.4.1*.



12 FM RADIO

FM Radio is supported by SC1 ADVANCED only.

12.1 FM Radio On and Off

To turn on the FM radio, press the (-) Button for 5 seconds until you hear a mid-toned double beep sound. You will then hear a voice prompt, **“FM on”**. To turn off the FM radio, press the (-) Button for 5 seconds until you hear a voice prompt, **“FM off”**. When you power it off, the SC1 will remember the last station frequency. When you power it on, the last station frequency will be playing.

12.2 Seek Frequencies

To search the next radio station, press and hold the (+) Button for 1 second.

12.3 Preset Stations

You can listen to preset stations while listening to the FM radio. Press the (+) Button for 3 seconds to go upward to your next saved preset station.

Note:

1. You can save FM stations to presets before using FM radio. Connect the SC1 to your PC and open the Device Manager. It allows you to save up to 10 FM station frequency presets on the SC1 settings menu. You may do the same operation by using the Smartphone App.
2. You can still answer an incoming phone call and intercom while listening to the FM radio.

12.4 Region Selection

You can select the proper FM frequency region from the Device Manager. With the region setting, you may optimize the seek function to avoid unnecessary frequency ranges (factory default: worldwide).

Region	Frequency Range	Step
Worldwide	76.0 ~ 108.0 MHz	± 100 kHz
Americas	87.5 ~ 107.9 MHz	± 200 kHz
Asia	87.5 ~ 108.0 MHz	± 100 kHz
Australia	87.5 ~ 107.9 MHz	± 200 kHz
Europe	87.5 ~ 108.0 MHz	± 100 kHz
Japan	76.0 ~ 95.0 MHz	± 100 kHz

13 FUNCTION PRIORITY

The SC1 operates in the following order of priority:

(highest)

Mobile phone

Intercom

Music sharing by Bluetooth stereo music

FM Radio

(lowest)

Bluetooth stereo music

A lower priority function is always interrupted by a higher priority function. For example, stereo music is interrupted by intercom call, and an intercom conversation is interrupted by an incoming mobile phone call.

14 CONFIGURATION SETTING

You can set the configuration of the SC1 by the voice menu instruction described below.

1. To enter into voice configuration menu, press and hold the (+) Button or the (-) Button for 10 seconds until the LED shows solid blue and you hear high toned double beeps. You will also hear a voice prompt, **“Configuration menu”**.
2. Tap the (+) Button to navigate between the menus. You will hear voice prompts for each menu item as below.
3. You can enable/disable a feature or execute a command by tapping the (-) Button.
4. If no button is pressed within 10 seconds, the SC1 will exit the configuration and go back to stand-by mode.
5. If you want to exit the configuration immediately, tap the (+) Button until you hear a voice prompt, **“Exit configuration”**, and tap the (-) Button.

The voice prompt for each menu item is as below:

- | | |
|--|--|
| (1) Intercom pairing * | (11) HD intercom |
| (2) Phone pairing | (12) VOX sensitivity |
| (3) Second mobile phone pairing | (13) Voice prompt |
| (4) Phone selective pairing | (14) RDS AF setting |
| (5) Media selective pairing | (15) Noise control |
| (6) Speed dial | (16) Delete all pairings |
| (7) Audio Boost | (17) Remote control pairing |
| (8) VOX phone | (18) Universal intercom pairing |
| (9) VOX intercom | (19) Factory reset |
| (10) Smart volume control | (20) Exit configuration |

.....
* SC1 ADVANCED only



- Intercom pairing *
- Phone pairing
- Second mobile phone pairing
- Phone selective pairing
- Media selective pairing
- Speed dial
- Audio Boost
- VOX phone
- VOX intercom
- Smart volume control
- HD intercom
- VOX sensitivity
- Voice prompt
- RDS AF setting
- Noise control
- Delete all pairings
- Remote control pairing
- Universal intercom pairing
- Factory reset
- Exit configuration

* SC1 ADVANCED only

14.1 Intercom Pairing (SC1 ADVANCED only)

Voice Prompt	“Intercom pairing”
Factory Default	N/A

To enter into intercom pairing mode, tap the (+) Button until you hear a voice prompt, **“Intercom pairing”**. Then tap the (-) Button to enter into intercom pairing mode. Once two headsets are in intercom pairing mode, tap the (+) Button of any one of the two headsets and soon the intercom connection will automatically be established. The headset will exit from the configuration menu.

14.2 Mobile Phone Pairing

Voice Prompt	“Phone pairing”
Factory Default	N/A

To go into mobile phone pairing mode, tap the (+) Button until you hear the voice prompt, **“Phone pairing”**. Please refer to *section 5.1, “Mobile Phone Pairing - Mobile Phone, Bluetooth Stereo Device”* for details on mobile phone pairing. If you tap the (+) Button, you can exit from the phone pairing mode.

14.3 Second Mobile Phone Pairing

Voice Prompt	“Second mobile phone pairing”
Factory Default	N/A

To go into second mobile phone pairing mode, tap the (+) Button until you hear the voice prompt, **“Second mobile phone pairing”**. Please refer to *section 5.2, “Second Mobile Phone Pairing - Second Mobile Phone, GPS, and SR10”* for details on second mobile phone pairing. If you tap the (+) Button, you can exit from the second mobile phone pairing mode.

14.4 Phone selective pairing

Voice Prompt	“Phone selective pairing”
Factory Default	N/A

To go into phone selective pairing mode, tap the (+) Button until you hear the voice prompt, **“Phone selective pairing”**. Please refer to *section 5.3.2, “HFP for Phone Call Only”* for details on phone selective pairing. If you tap the (+) Button, you can exit from the phone selective pairing mode.

14.5 Media Selective Pairing

Voice Prompt	“Media selective pairing”
Factory Default	N/A

To go into media selective pairing mode, tap the (+) Button until you hear the voice prompt, **“Media selective pairing”**. Please refer *section 5.3.1, “A2DP Stereo Music Only”* for details on media selective pairing. If you tap the (+) Button, you can exit from the media selective pairing mode.

14.6 Assigning Speed Dial

Voice Prompt	“Speed dial”
Factory Default	N/A
Execute	Tap the (-) Button

1. To assign a phone number as a speed dial, tap the (+) Button until you hear a voice prompt, **“Speed dial”**.
2. Tap the (-) Button, and you will hear a voice prompt, **“Speed dial one”** and **“Phone connected”**.
3. Tap the (+) Button to select one of three speed dial numbers and you hear a voice prompt, **“Speed dial (#)”**.

4. Call a phone number you want to assign and you will hear a voice prompt, **“Save speed dial (#)”**. The phone number is automatically assigned to the selected speed dial number. Then the phone call will hang up before being connected.
5. To exit the menu, tap the (+) Button until you hear a voice prompt, **“Cancel”**, and tap the (-) Button to confirm. You will then hear a voice prompt, **“Cancel”**. If no button is pressed within 1 minute, the SC1 will exit the configuration menu and go back to stand-by mode.

Note:

1. After assigning a phone number to one of three speed dials, you can continually assign another phone number to the rest of two speed dials.
2. You can also assign phone numbers for speed dialing by using the Device Manager software or the Smartphone App.

14.7 Enabling/Disabling Audio Boost

Voice Prompt	“Audio boost”
Factory Default	Disable
Enable/Disable	Tap the (-) Button

Enabling Audio Boost increases the overall maximum volume. Disabling Audio Boost reduces the overall maximum volume, but delivers more balanced sound.

14.8 Enabling/Disabling Voice Activated Phone Answering

Voice Prompt	“VOX phone”
Factory Default	Enable
Enable/Disable	Tap the (-) Button

If this feature is enabled, you can answer incoming calls by voice. When you hear a ringtone for an incoming call, you can answer the phone by saying a word such as **“Hello”** loudly or by blowing air into the microphone. VOX phone is temporarily disabled if you are connected to intercom. If this feature is disabled, you have to tap the (+) Button to answer an incoming call.

14.9 Enabling/Disabling Voice Activated Intercom

Voice Prompt	"VOX intercom"
Factory Default	Disable
Enable/Disable	Tap the (-) Button

If this feature is enabled, you can initiate an intercom conversation with the last connected intercom friend by voice. When you want to start intercom, say a word such as **"Hello"** loudly or blow air into the microphone. If you start an intercom conversation by voice, the intercom terminates automatically when you and your intercom friend remain silent for 20 seconds. However, if you manually start an intercom conversation by tapping the (-) Button within the intercom menu, you have to terminate the intercom conversation manually.

However, if you start intercom by voice and end it manually by pressing and holding the (-) Button for 3 seconds, you will not be able to start intercom by voice temporarily. In this case, you have to tap the (-) Button within the intercom menu to restart the intercom. This is to prevent repeated unintentional intercom connections by strong wind noise. After rebooting the SC1, you can start intercom by voice again.

14.10 Setting Smart Volume Control

Voice Prompt	"Smart volume control"
Factory Default	Disable
Level Adjustment	Tap the (+) Button (Low/Medium/High/Disable)
Apply	Tap the (-) Button

Smart Volume Control automatically changes the level of the speaker volume based on the level of the environmental noise. When it is disabled, volume is controlled manually. Tap the (+) Button until you hear the voice prompt, **"Smart volume control"**. By tapping the (-) Button, it will lead you to the level adjustment mode. You can enable it by setting the sensitivity to low, medium, or high. Smart Volume Control responds to smaller environmental noises as the sensitivity level becomes higher.

14.11 Enabling/Disabling HD Intercom

Voice Prompt	“HD intercom”
Factory Default	Enable
Enable/Disable	Tap the (-) Button

HD Intercom enhances the two-way intercom audio from normal quality to HD quality. HD Intercom will become temporarily disabled when you enter into a multi-way intercom. If this feature is disabled, the two-way intercom audio will change to normal quality.

Note:

The intercom distance of HD Intercom is relatively shorter than that of normal intercom.

14.12 Setting Intercom VOX Sensitivity

Voice Prompt	“VOX sensitivity”
Factory Default	Medium
Execute	Tap the (-) Button
Level Adjustment	Tap the (-) Button (Low/Medium/High)

Tap the (+) Button until you hear the voice prompt, “**VOX sensitivity**”. By tapping the (-) Button, it will lead you to the level adjustment mode. If you enter the mode, you will hear a prompt stating the current VOX sensitivity level. You may adjust the VOX sensitivity level by tapping the (-) Button. To complete the adjustment, select the desired level and wait until you hear the audio confirmation that the adjustment has been applied.

14.13 Enabling/Disabling Voice Prompts

Voice Prompt	“Voice prompt”
Factory Default	Enable
Enable/Disable	Tap the (-) Button

You can disable voice prompts by configuration setting, but the following voice prompts are always on.

- Voice prompts for configuration setting menu
- Voice prompts for battery level indicator
- Voice prompts for speed dial
- Voice prompts for FM radio functions

14.14 Enabling/Disabling RDS AF

Voice Prompt	“RDS AF setting”
Factory Default	Disable
Enable/Disable	Tap the (-) Button

RDS AF allows a receiver to re-tune to the second frequency location when the first signal becomes too weak. With RDS AF enabled on the receiver, a radio station with more than one frequency can be used.

14.15 Enabling/Disabling Advanced Noise Control™

Voice Prompt	“Noise control”
Factory Default	Enable
Enable/Disable	Tap the (-) Button

When Advanced Noise Control is enabled, the background noise is reduced during an intercom conversation. When it is disabled, the background noise is mixed with your voice during intercom.

Note:

If you use your SC1 with the Bluetooth Audio Pack for GoPro, you can enable or disable this feature only during Normal Audio Recording Mode. This feature is automatically disabled while in Ultra HD (UHD) Audio Mode.

14.16 Delete All Bluetooth Pairing Information

Voice Prompt	“Delete all pairings”
Factory Default	N/A
Execute	Tap the (-) Button

To delete all Bluetooth pairing information of the SC1, tap the (+) Button until you hear a voice prompt, **“Delete all pairings”**, and tap the (-) Button to confirm.

14.17 Remote Control Pairing

Voice Prompt	“Remote control pairing”
Factory Default	N/A
Execute	Tap the (-) Button

To enter into Remote Control Pairing mode, tap the (+) Button until you hear a voice prompt, **“Remote control pairing”**. Then tap the (-) Button to enter into Remote Control Pairing mode. The headset will automatically exit from the configuration menu.

14.18 Universal Intercom Pairing

Voice Prompt	“Universal intercom pairing”
Factory Default	N/A
Execute	Tap the (-) Button

To enter into Universal Intercom Pairing mode, tap the (+) Button until you hear a voice prompt, **“Universal intercom pairing”**. Then tap the (-) Button to enter into Universal Intercom Pairing mode. The headset will automatically exit from the configuration menu.

14.19 Factory Reset

Voice Prompt	“Factory reset”
Factory Default	N/A
Execute	Tap the (-) Button

To restore factory default settings on the SC1, tap the (+) Button until you hear a voice prompt, **“Factory reset”**, and tap the (-) Button to confirm. The SC1 powers off with a voice prompt, **“Headset reset, goodbye”**.

14.20 Exit Voice Configuration Menu

Voice Prompt	“Exit configuration”
Factory Default	N/A
Execute	Tap the (-) Button

To exit voice configuration menu and get back to stand-by mode, tap the (+) Button until you hear a voice prompt, **“Exit configuration”**, and tap the (-) Button to confirm.

Tap (+) Button	Tap (-) Button
Intercom Paring	Execute
Phone Pairing	None
Second Mobile Phone Pairing	None
Phone Selective Pairing	None
Media Selective Pairing	None
Speed Dial	Execute
Audio Boost	Enable/Disable
VOX Phone	Enable/Disable
VOX Intercom	Enable/Disable
Smart Volume Control	Execute
HD Intercom	Enable/Disable
VOX Sensitivity	- Enter adjustment mode - Save and exit
Voice Prompt	Enable/Disable
RDS AF Setting	Enable/Disable
Advanced Noise Control	Enable/Disable

Tap (+) Button	Tap (-) Button
Delete All Pairings	Execute
Remote Control Pairing	Execute
Universal Intercom Pairing	Execute
Factory Reset	Execute
Exit Configuration	Execute

Voice Configuration Menu & Button Operations

15 REMOTE CONTROL

You can remotely control the SC1 via Bluetooth using the Remote Control (sold separately). This eliminates the need to take off your hand for button operations. Your SC1 and the Remote Control must be paired together before use.

1. Turn on the SC1 and the Remote Control.
2. Press the (+) Button or the (-) Button for 10 seconds to enter the configuration menu. Tap the (+) Button until you hear a voice prompt saying, **“Remote control pairing”**. Press the (-) Button to enter into Remote Control Pairing mode and the red LED will flash rapidly and you will hear multiple beeps. Please refer to *section 14.17, “Remote Control Pairing”* for more details.
3. Enter Bluetooth pairing mode on your Remote Control. The SC1 will automatically perform pairing with the Remote Control in pairing mode. You will hear a voice prompt, **“Remote control connected”**, when they are successfully connected.

16 FIRMWARE UPGRADE

The SC1 supports firmware upgrades. You can update the firmware using the Device Manager (please refer to *section 4.6.1, “Device Manager”*).

17 TROUBLESHOOTING

17.1 Intercom Failure

When you try to start an intercom conversation with an intercom friend who is unavailable within range or already having a conference intercom with other riders or a mobile phone call, you will hear a low tone double beep signifying an intercom busy signal. In this case, you have to try again later.

17.2 Intercom Reconnection

If your intercom friend goes out of range while having an intercom conversation, you may hear static noise and eventually the intercom will be disconnected. In this case, the SC1 automatically tries to reconnect the intercom every 8 seconds and you will hear high tone double beeps until the intercom is reestablished. If you do not want to make a reconnection, press and hold the (-) Button for 1 second to stop the attempt.

17.3 Factory Reset

If you want to restore the headset to factory default settings, use the Factory Reset in the configuration menu. The headset automatically restores the default settings and turns off. Please refer to *section 14.19, "Factory Reset"* for more details.

18 QUICK OPERATION REFERENCE

Type	Function	Button Command	LED	Beep
Basic Function	Power on	Press the (+) Button and the (-) Button for 1 second	Solid blue	Ascending beeps
	Power off	Press the (+) Button and the (-) Button for 1 second	Solid red	Descending beeps
	Volume adjustment	Tap the (+) Button or the (-) Button	-	-
Mobile Phone	Answer mobile phone call	Tap the (+) Button	-	-
	End mobile phone call	Press the (+) Button for 2 seconds	-	-
	Voice dial	Press the (+) Button for 3 seconds	-	-
	Speed dial	Press the (+) Button for 5 seconds	-	Mid-tone single beep
	Reject incoming call	Press the (+) Button for 2 seconds	-	-

Type	Function	Button Command	LED	Beep
Intercom	Intercom pairing	Press the (-) Button for 1 second	-	-
		Tap the (+) Button	Red flashing	Mid-tone single beep
		Tap the (+) Button of any one of the two headsets		
	Start/End each intercom	Press the (-) Button for 1 second	-	-
		Tap the (-) Button	-	Mid-tone double beeps
	End all intercoms	Press the (-) Button for 3 seconds	-	Mid-tone double beeps
	Start Group Intercom	Press the (-) Button for 1 second	-	-
Press the (-) Button for 1 second		Blue and red flashing	-	
End Group Intercom	Press the (-) Button for 3 seconds	-	-	
Music	Play/Pause Bluetooth music	Press the (+) Button for 1 second	-	Mid-tone double beeps
	Track forward/back	Press the (+) Button or the (-) Button for 2 seconds	-	-

Type	Function	Button Command	LED	Beep
FM Radio	FM radio on/off	Press the (-) Button for 5 seconds	-	Mid-tone double beeps
	Select preset	Press the (+) Button for 3 seconds	-	Mid-tone single beep
	Seek up	Press the (+) Button for 1 second	-	High tone triple beeps

CERTIFICATION AND SAFETY APPROVALS

FCC Compliance Statement

This device complies with part 15 of the FCC rules. Operation is subject to the following two conditions:

- (1) This device may not cause harmful interference, and
- (2) This device must accept any interference received, including interference that may cause undesired operation.

This equipment has been tested and found to comply with the limits for a Class B digital device pursuant to part 15 of the FCC rules. These limits are designed to provide reasonable protection against harmful interference in a residential installation. This equipment generates, uses and can radiate radio frequency energy and, if not installed and used in accordance with the instructions, may cause harmful interference to radio communications. However, there is no guarantee that interference will not occur in a particular installation. If this equipment does cause harmful interference to radio or television reception, which can be determined by turning the equipment on and off, the user is encouraged to try to correct the interference by one or more of the following measures:

- Reorient or relocate the receiving antennae
- Increase the separation between the equipment and the receiver

- Connect the equipment into an outlet on a circuit different from that to which the receiver is connected
- Consult the dealer or an experienced radio/TV technician for help

FCC RF Exposure Statement

This equipment complies with FCC radiation exposure limits set forth for an uncontrolled environment. End users must follow the specific operating instructions for satisfying RF exposure compliance. The antenna used for this transmitter must not transmit simultaneously with any other antenna or transmitter, except in accordance with FCC multi-transmitter product procedures.

FCC Caution

Any changes or modifications to the equipment not expressly approved by the party responsible for compliance could void user's authority to operate the equipment.

CE Declaration of Conformity

This product is CE marked according to the provisions of the R&TTE Directive (2014/53/EU). Hereby, Sena declares that the radio equipment type SP35 is in compliance with Directive 2014/53/EU.

For further information, please consult. Please note that this product uses radio frequency bands not harmonized within EU. Within the EU this product is intended to be used in Austria, Belgium, Denmark, Finland, France, Germany, Greece, Ireland, Italy, Luxembourg, The Netherlands, Portugal, Spain, Sweden, United Kingdom and within EFTA in Iceland, Norway and Switzerland.

This device can be operated in at least one MemberState without infringing applicable requirements on the use of radio spectrum.

RF Range: 2402 ~ 2480MHz

Max Output Power(E.I.R.P.): 17.98 dBm

Industry Canada Statement

This device complies with Industry Canada license-exempt RSS standard(s). Operation is subject to the following two conditions:

- (1) This device may not cause interference.
- (2) This device must accept any interference, including interference that may cause undesired operation of the device.

Bluetooth License

The Bluetooth® word mark and logos are owned by the Bluetooth SIG, Inc. and any use of such marks by Sena is under license. Other trademarks and trade names are those of their respective owners.

The product is compliant with and adopts the Bluetooth® Specification 4.1 and has successfully passed all interoperability tests that are specified in the Bluetooth® specification. However, interoperability between the device and other Bluetooth®-enabled products is not guaranteed.

WEEE (Waste Electrical and Electronic Equipment)



The crossed-out wheel bin symbol on the product, literature, or packaging reminds you that all electrical and electronic products, batteries, and accumulators must be taken to separate collection at the end of their working life. This requirement applies to the European Union and other locations where separate collection systems are available. To prevent possible harm to the environment or human health from uncontrolled waste disposal, please do not dispose of these products as unsorted municipal waste, but hand it in at an official collection point for recycling.

SAFETY INFORMATION

Please ensure that the product is properly used by observing the warnings and cautions below to prevent any risk and/or damage to property.

Product Storage and Management

- Keep the product free of dust. It may damage mechanical and electronic parts of the product.
- Do not store the product in high temperatures as this may reduce the life span of electronic devices, damage the battery, and/or melt plastic parts of the product.
- Do not store the product in cold temperatures. Abrupt changes in temperatures may cause condensation and damage electronic circuits.
- Do not clean the product with cleaning solvents, toxic chemicals, or strong detergents as this may damage the product.
- Do not paint the product. Paint may obstruct moving parts or interfere with the normal operation of the product.
- Do not drop or otherwise shock the product. It may damage the product or its internal electronic circuits.
- Do not disassemble, repair or modify the product as this may damage the product and invalidate the product warranty.
- Do not store the product in humid environments, especially for long time storage.

Product Use

- ◆ In some regions, it is prohibited by law to ride motorcycles while wearing headsets or earbuds. Therefore be certain to comply with all relevant laws in the region before using the product.
- ◆ The headset is for motorcycle helmets only. To install the headset, you must follow the installation instructions shown in the User's Guide.
- ◆ Use of the product at a high volume for a long period of time may damage your eardrums or hearing ability. Keep the volume at a modest level to prevent damage.
- ◆ Do not cause impact to the product or touch it with sharp tools as this may damage the product.
- ◆ Do not use the product in high-temperatures or apply heat to the product as this may cause damage, explosion, or fire.
- ◆ Keep product away from pets or small children. It may damage the product.
- ◆ In any place where wireless communication is prohibited, such as hospitals or airplanes, turn off the power and refrain from using the product. In a place where wireless communication is prohibited, electromagnetic waves may cause hazards or accidents.
- ◆ Do not use the product near hazardous explosives. When it is near any explosion hazards, turn off the power and heed any regulations, instructions, and signs in the area.

- ◆ When using the product, be certain to conform to laws regarding the use of communications devices while riding.
- ◆ Do not put the product where it may hamper the rider's vision or manipulate it while riding. This may cause traffic accidents.
- ◆ Before riding, fasten the product to the helmet, and double-check that it is fastened. Separation of the product while riding may cause damage to the product or accidents.
- ◆ If the product is damaged, stop using it immediately. It may cause damage, explosion, or fire.

Battery

This product has an irreplaceable rechargeable battery inside. Therefore, when using the product, make sure to adhere to the following:

- ◆ Never separate the battery from the product as this may damage the product.
- ◆ The battery performance may be reduced over time with usage.
- ◆ In recharging the battery, make sure to use an approved charger provided by the manufacturer. Use of a non-approved charger may cause fire, explosion, leakage, and other hazards may also reduce the life time or performance of the battery.

- Any 3rd party USB charger can be used with Sena products if the charger is approved by either the FCC, CE, IC or other locally approved agencies that Sena accepts.
- Do not use cigarette chargers other than the included cigarette charger to charge the headset.
- Store the battery at temperatures of 15°C~25°C (59°F~77°F). Higher or lower temperatures may reduce the capacity and life of the battery, or may cause temporary non-operation. Do not use the product in sub-zero temperature, because it may cause serious reduction of the battery performance.
- If you apply heat to the battery or throw it into fire, it may explode.
- Do not use the product with a damaged battery. It may explode and/or cause accidents.
- Never use a damaged charger. It may explode and/or cause accidents.
- Battery life may vary depending on conditions, environmental factors, functions of the product in use, and devices used with it.