

# QUICK START GUIDE



**E1**



**SCHUBERTH**

## QUICK START GUIDE

# E1

You have made an excellent choice with the SCHUBERTH E1. The E1 combines the functionality of a flip-up helmet with the look and feel of a modern adventure helmet.

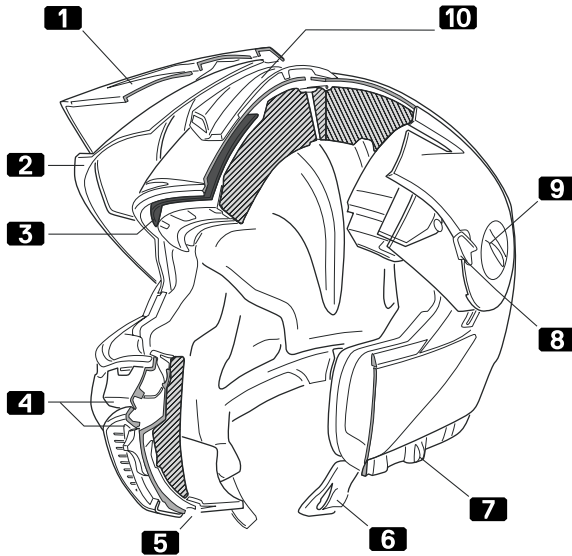
Be inspired!



Jan-Christian Becker  
CEO SCHUBERTH GmbH

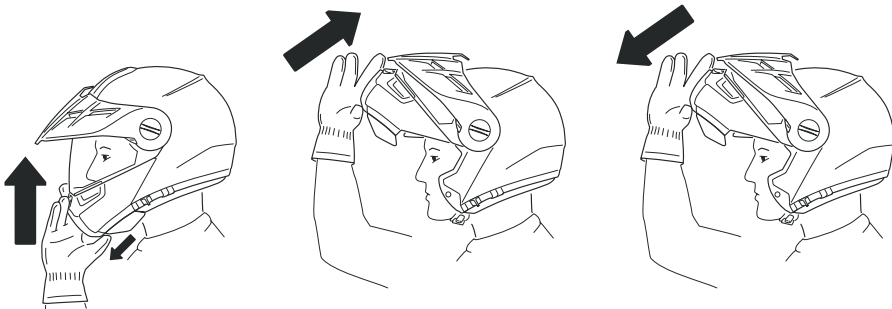


Thomas Schulz  
Product Management SCHUBERTH GmbH

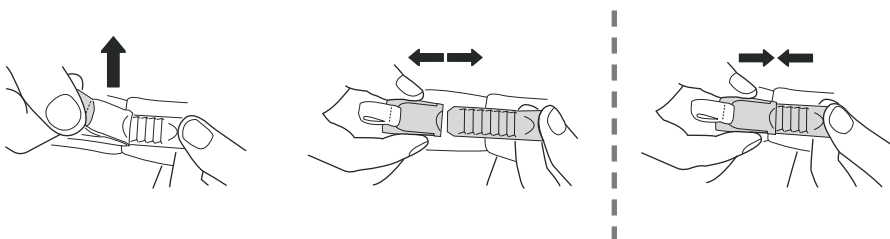


- 1** Peak
- 2** Face shield
- 3** Sun visor
- 4** Ventilation
- 5** Chin bar release
- 6** Chin strap
- 7** Slide for sun visor
- 8** Peak lever
- 9** Face shield and peak mechanics
- 10** Head ventilation

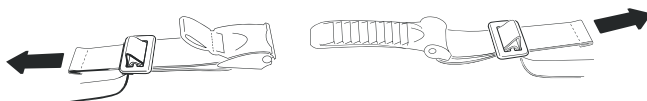
## Chin bar



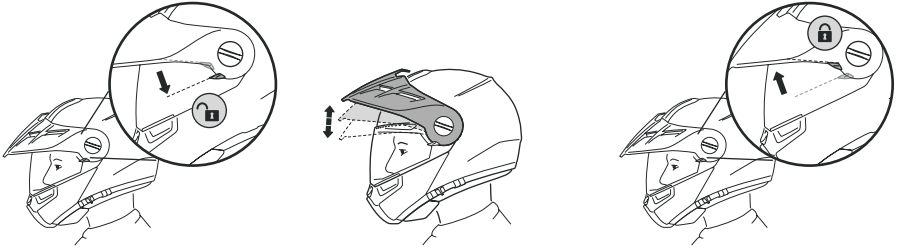
## Chin strap



## Adjusting the chin strap



## Peak



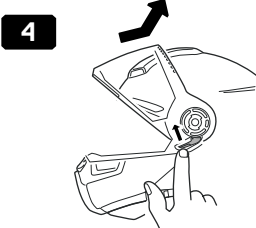
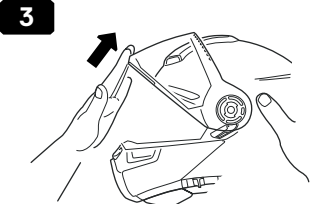
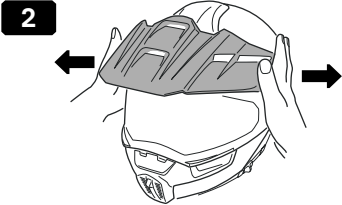
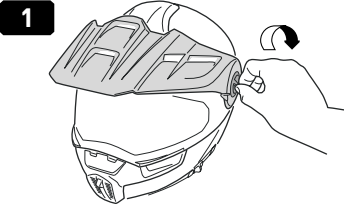
## Face shield and sun visor



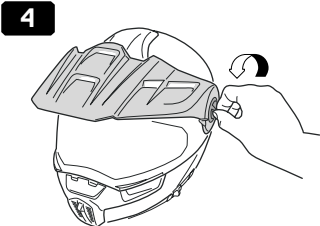
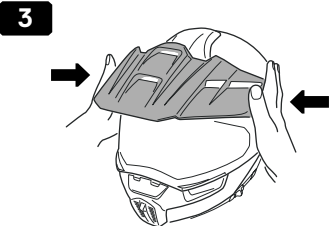
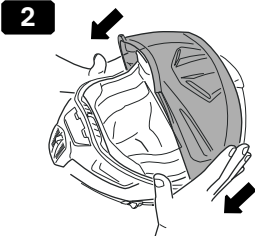
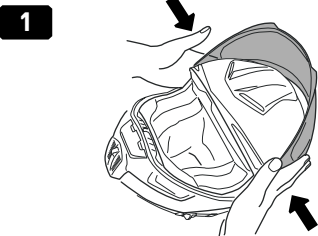
## Ventilation



# Removing the face shield



# Installing the face shield



## Communication systems



As accessories available, ask your specialist supplier.