



## RSD TURN SIGNAL AND MOUNT



### RSD FRONT TURN SIGNAL AND MOUNT INSTALLATION

1. Turn your motorcycle off, place securely on a lift or side stand and disconnect the battery.
2. Remove your handle bars and top triple clamp.  
**NOTE:** Some models may require the fuel tank to be removed consult your HD service manual for specific instructions.
3. Assemble your RSD Turn Signal and Fork Mount using the provided hardware and install over the fork leg.  
**NOTE:** Apply medium strength thread locker.



4. Slide the fork mount and signal to the bottom of the fork leg and align it to your desired position. Once you have aligned the mount torque the pinch bolt to 16 ft-lbs.



5. Repeat on the other side and complete your wiring. Reinstall any removed component and hit the road!

#### PRODUCT DESCRIPTION

RSD TURN SIGNAL SET FRONT	0207-2018
RSD TURN SIGNAL SET REAR	0207-2019
RSD TURN SIGNAL STRUT MOUNT	0207-2020
RSD TURN SIGNAL 39MM FORK MOUNT	0207-0021
RSD TURN SIGNAL 41MM FORK MOUNT	0207-0022
RSD TURN SIGNAL 49MM FORK MOUNT	0207-0023

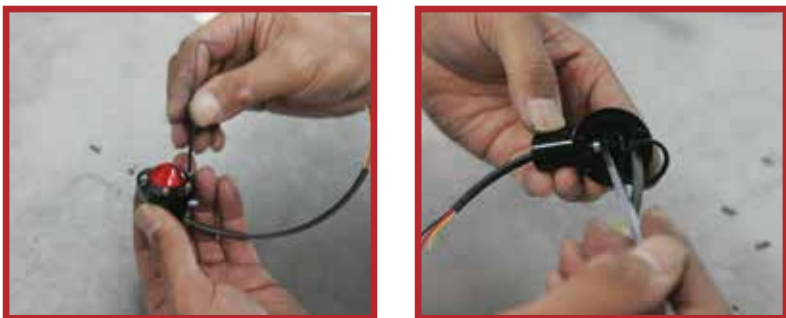


## RSD REAR TURN SIGNAL AND MOUNT INSTALLATION

1. Turn your motorcycle off, place securely on a lift or side stand.
2. Begin by removing your stock turn signals and mounts.
  - SPORTSTER:** Remove the nut behind the fender and the bolts holding the strut cover on. (shown)
  - DYNA:** Remove the bolt holding the turn signal and mount from inside the fender.
  - SOFTAIL:** Remove the strut cover and unbolt the turn signal and mount.
  - NOTE:** Consult your HD service manual for specific instructions.



3. Disassemble your RSD Turn signal and install your rear stunt mounts to the signal housing.
  - NOTE:** Use medium strength thread locker when reassembling.



4. Choose the correct hardware for your application. Sportsters use the longer bolt on the license plate mount side.
  - SPORTSTER:** Larger spacers will go between the strut and strut cover (shown)



**SPORTSTER**

**DYNA**

**SOFTAIL**

5. With the correct hardware begin installing the turn signal housing and mount to the motorcycle. Torque to 20 ft-lbs.
  - NOTE:** Use medium strength thread locker.



6. Adjust the angle of the light housing and tighten down the bolt from inside. Reinstall the lens and ring.
  - NOTE:** Use medium strength thread locker.



7. Complete your wiring and install any removed components.

## RSD TURN SIGNAL WIRING

Wiring will vary depending on model and year, consult your HD wiring diagram for specific instructions.

**REAR** - RED

RED: HIGH INTENSITY (SIGNAL)

YELLOW: LOW INTENSITY (RUNNING)

**FRONT** - AMBER

BLACK: GROUND

BLUE: LOW INTENSITY (RUNNING)

YELLOW: HIGH INTENSITY (SIGNAL)

**NOTE:** Install heat shrink tubing around the wires for protection.