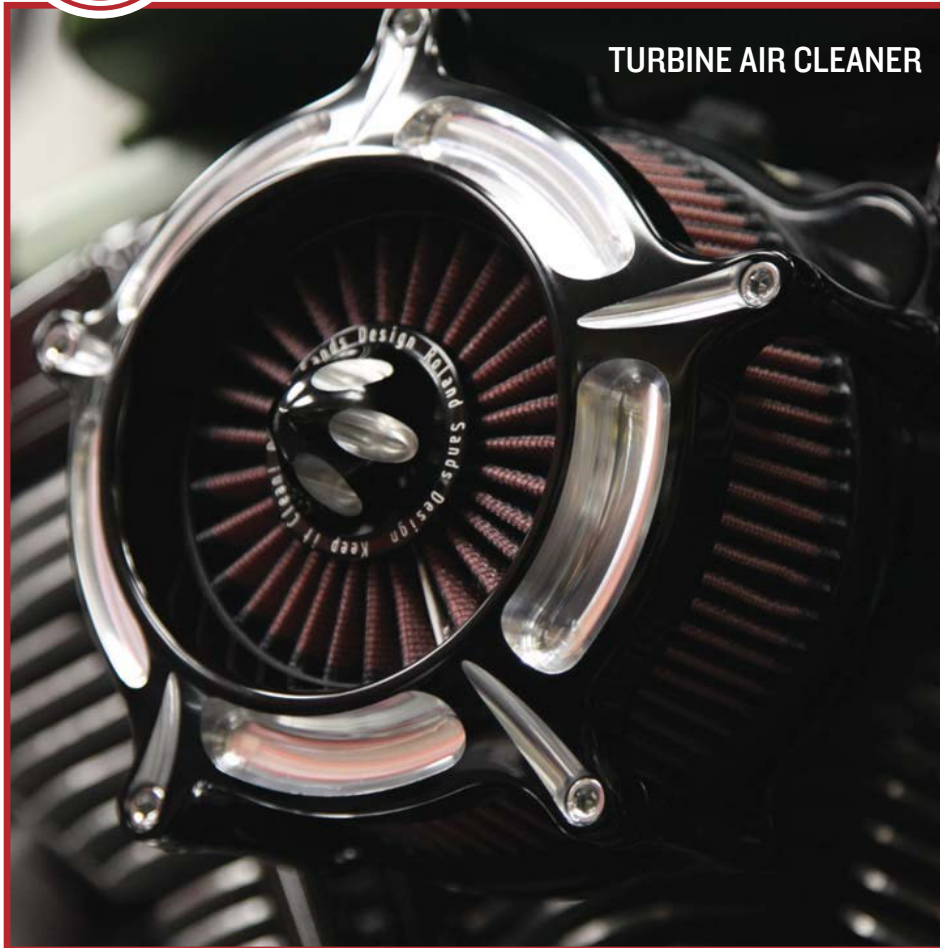




# ROLAND SANDS DESIGN®

## ASSEMBLY INSTRUCTIONS



TURBINE AIR CLEANER

For Fuel injected models, you must recalibrate the ECM or buy an aftermarket fuelpack from Vance & Hines to properly calibrate your new intake. Failure to do so may result in engine damage.

**NOTE:** Inserts are required for use with 1993-1999 HD Evolution applications.

To install inserts thread a 3/8-16 bolt through the insert and thread both the bolt and insert completely into the breather hole then remove the 3/8" bolt. Once the inserts are installed you can begin air cleaner installation.

**NOTE:** Upon assembly use blue 243 loctite on all fasteners. Some models may require use of 3/8-16 to 1/2-13 thread reducers (supplied).

1. Turn your motorcycle off. Extinguish all cigarettes and open flames.
2. Remove existing air cleaner and breathers. (Refer to HD owners Manual)
3. Install 2 breathers (6) and backing plate (4) with 2 slotted breather bolts (8) using blue loctite 243, torque to 15 ft. lbs. Install three 1/4-20 bolts (1), torque to 8 ft. lbs.

**NOTE:** For 08/09 FL models reuse throttle body support bracket as shown in Fig. A

4. Install rubber breather tubes (13) as shown in Fig. B. They should fit snugly into the machined recesses.
5. Install the secondary plate (5) and ensure that it sits flat and there is no obstruction from the breather tubes below.
6. Install (3,7,9,14,16) as an assembly with five spacers (10) using five 1/4-20 x 2 1/2 bolts (2) to backing plate (4), torque to 8 ft. lbs.

**NOTE:** Do not remove nose cone from air filter unless necessary. It is torqued with red loctite 271 from RSD. If you must remove nose cone to replace or clean air filter, **torque to 8 ft-lbs with red loctite 271.**

7. Fire that bitch up and go do some laps.

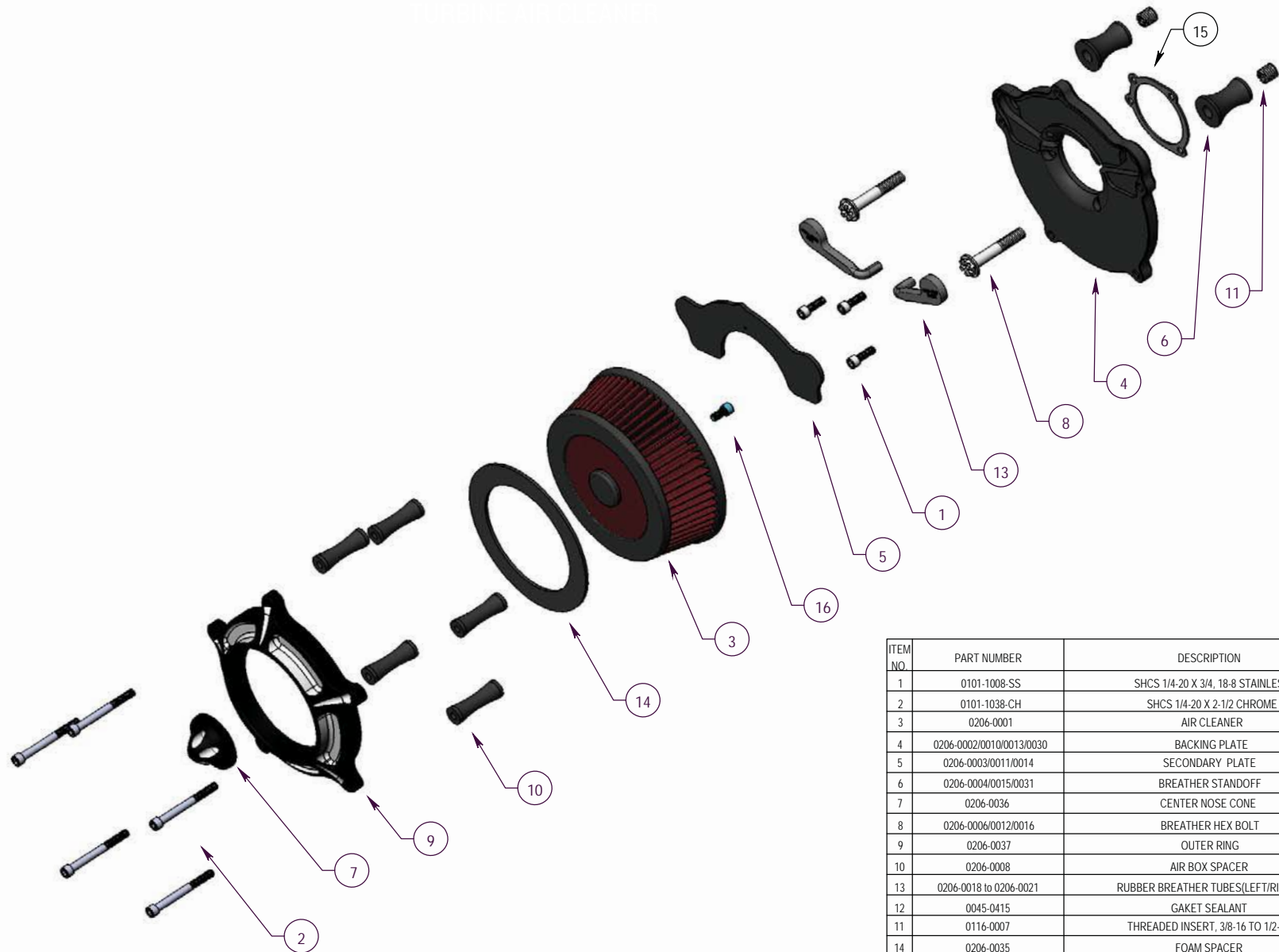


CAUTION !!! - INTENDED FOR OFF HIGHWAY USE ONLY. DOES NOT COMPLY WITH EMISSIONS REGULATIONS

### PRODUCT DESCRIPTION

Turbo

93-06 Big Twin w/ CV Carb, 02-07 FL w/ Delphi EFI	0206-2037
2001-2012 FXST Softail, 2004-2012 Dyna	0206-2037
2008-2012 FL	0206-2038
1993-2012 Twin Cam w/ S&S E/G Carb	0206-2040



ITEM NO.	PART NUMBER	DESCRIPTION	QTY.
1	0101-1008-SS	SHCS 1/4-20 X 3/4, 18-8 STAINLESS	3
2	0101-1038-CH	SHCS 1/4-20 X 2-1/2 CHROME	5
3	0206-0001	AIR CLEANER	1
4	0206-0002/0010/0013/0030	BACKING PLATE	1
5	0206-0003/0011/0014	SECONDARY PLATE	1
6	0206-0004/0015/0031	BREATHER STANDOFF	2
7	0206-0036	CENTER NOSE CONE	1
8	0206-0006/0012/0016	BREATHER HEX BOLT	2
9	0206-0037	OUTER RING	1
10	0206-0008	AIR BOX SPACER	5
13	0206-0018 to 0206-0021	RUBBER BREATHER TUBES(LEFT/RIGHT)	1
12	0045-0415	GAKET SEALANT	1
11	0116-0007	THREADED INSERT, 3/8-16 TO 1/2-13	2
14	0206-0035	FOAM SPACER	1
15	0206-0038/0039/0040	GASKET	1
16	0101-1004	SHCS 1/4-20 X .50 ZINC PLATED	1



# ROLAND SANDS DESIGN®

## ASSEMBLY INSTRUCTIONS

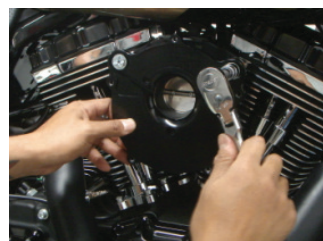
### TURBINE AIR CLEANER



For Fuel injected models, you must recalibrate the ECM or buy an aftermarket fuelpack from Vance & Hines to properly calibrate your new intake. Failure to do so may result in engine damage.

**NOTE:** Upon assembly use blue 243 loctite on all fasteners.

1. Turn your motorcycle off. Extinguish all cigarettes and open flames.
2. Remove existing air cleaner and breathers. (Refer to HD owners Manual)
3. Install 2 breathers (8) and backing plate (6) with 2 breather bolts (9) using blue loctite 243, torque to 15 ft. lbs.



4. Align the backing plate (6) with the breather bolts (9) then install the three 1/4-20 bolts (2) and gasket (13) and torque to 8 ft-lbs. Note: Aligning the breather bolts with the backing plate will allow easier installation and function of the rubber breather tubes (14 & 15).
5. Install the rubber breather tubes (14 & 15) into the recesses and make sure they form a good seal around the breather bolt head.
6. Install the secondary plate (7).
7. Install (1,4,10,11,12) as an assembly with the five spacers (5) using five 1/4-20 x 2.5" bolts (3) to the backing plate (6) and torque to 8 ft-lbs.
8. Recalibrate ECM to the supplied values from you exhaust manufacturer.
9. Fire that hot rod up and go do some laps.

**CAUTION !!! - INTENEDED FOR OFF HIGHWAY USE ONLY. DOES NOT COMPLY WITH EMISSIONS REGULATIONS**

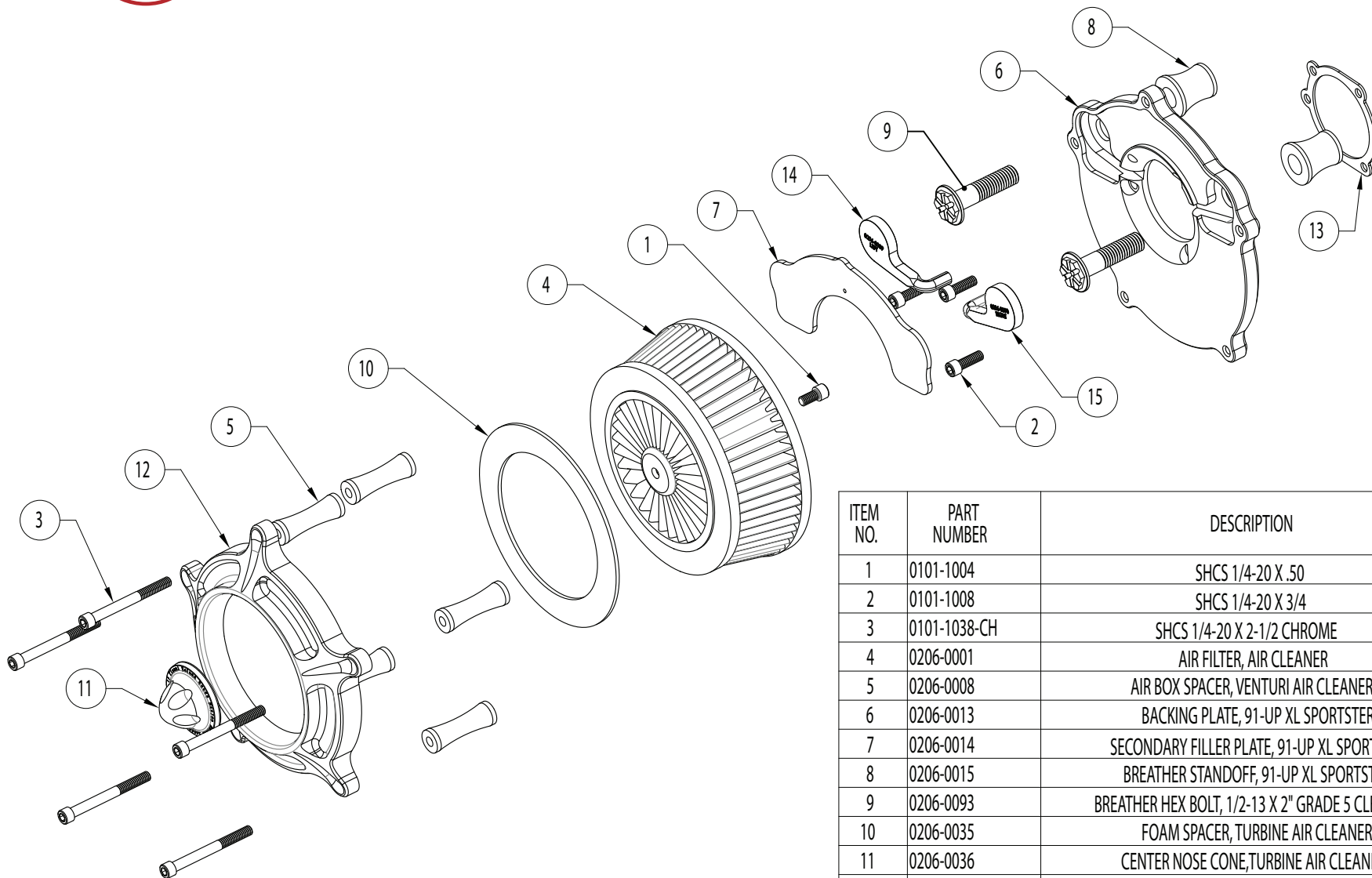
#### PRODUCT DESCRIPTION

P/N

1991-2012 Sportster XL

0206-2039





ITEM NO.	PART NUMBER	DESCRIPTION	QTY.
1	0101-1004	SHCS 1/4-20 X .50	1
2	0101-1008	SHCS 1/4-20 X 3/4	3
3	0101-1038-CH	SHCS 1/4-20 X 2-1/2 CHROME	5
4	0206-0001	AIR FILTER, AIR CLEANER	1
5	0206-0008	AIR BOX SPACER, VENTURI AIR CLEANER	5
6	0206-0013	BACKING PLATE, 91-UP XL SPORTSTER	1
7	0206-0014	SECONDARY FILLER PLATE, 91-UP XL SPORTSTER	1
8	0206-0015	BREATHER STANDOFF, 91-UP XL SPORTSTER	2
9	0206-0093	BREATHER HEX BOLT, 1/2-13 X 2" GRADE 5 CLEAR ZINC	2
10	0206-0035	FOAM SPACER, TURBINE AIR CLEANER	1
11	0206-0036	CENTER NOSE CONE, TURBINE AIR CLEANER	1
12	0206-0037	OUTER RING, TURBINE AIR CLEANER	1
13	0206-0039	GASKET B-29059-88-062, 93-06 BT, 01-07 ST, 04-10 DYNA	1
14	0206-0089	OIL TUBE - LEFT	1
15	0206-0090	OIL TUBE - RIGHT	1

CAUTION !!! - INTENDED FOR OFF HIGHWAY USE ONLY. DOES NOT COMPLY WITH EMISSIONS REGULATIONS

Find out more about air intake parts we have.