



ROLAND SANDS DESIGN®

ASSEMBLY INSTRUCTIONS

NOSTALGIA ROCKER BOX COVERS



PRODUCT DESCRIPTION

2004-UP SPORTSTER XL MODELS: NOSTALGIA ROCKER BOX COVERS

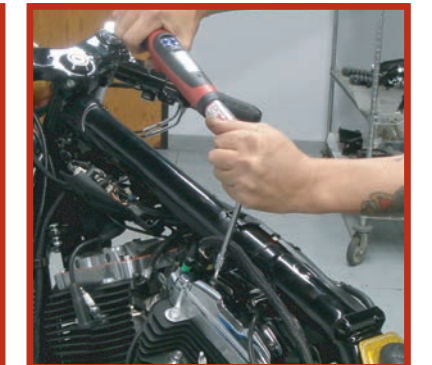
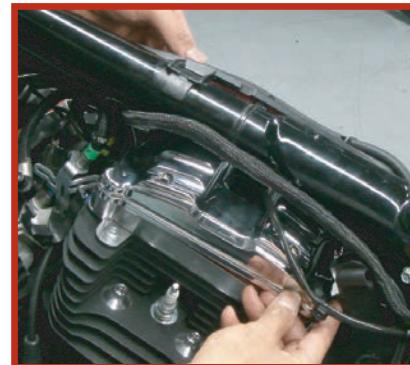
0177-2023

RSD SPORTSTER XL NOSTALGIA ROCKER BOX COVERS INSTALLATION

1. Turn your motorcycle off, place securely on a lift or side stand and disconnect the battery.
2. Remove the fuel tank. **Note:** refer to the HD service manual for additional instructions.
3. With the tank removed, remove the factory rocker box covers. Clean and inspect all sealing surfaces and the factory o-ring seals (replace if necessary). **Note:** refer to the HD service manual for specific instructions.
4. Install the rear rocker box cover from the left side of the bike (primary side). Insert the rocker box between the frame and rocker base slightly in front of the cylinder and rotate clockwise inward as shown below. **Disclaimer:** install slowly to avoid damage to the cover or the motorcycle.



5. Once the RSD rocker box cover is in the correct position, insert the 4 supplied 1/4" bolts (1) and aluminum sealing washers (2) and torque to 120 in-lbs.



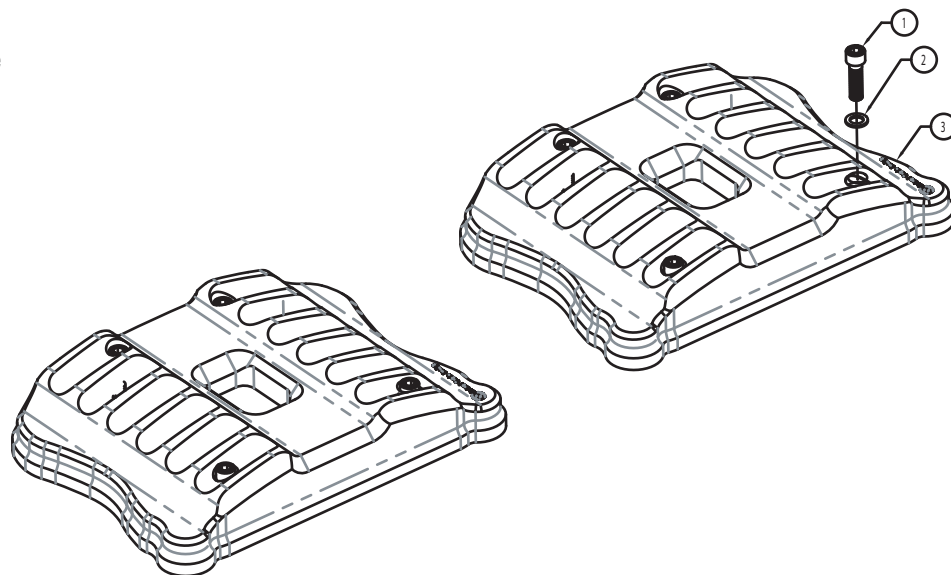


ROLAND SANDS DESIGN

ASSEMBLY INSTRUCTIONS

Nostalgia Rocker Box Covers

5. Install the front RSD rocker box cover as shown below. **Note:** the front rocker box cover has more clearance so installation is slightly easier. Once the RSD cover is in position install the supplied 1/4" bolts and aluminum sealing washers (2) and torque to 120 in-lbs.



6. Install the fuel tank and reconnect the battery.

7. Go for a ride!

ITEM NO.	DESCRIPTION	QTY.
1	SHCS 1/4-20 X 7/8	8
2	WASHER .438 OD X .274 ID X .040 FLAT	8
3	RSD ROCKER BOX NOSTALGIA, 2004-12 XL SPORTSTER	2