



# ROLAND SANDS DESIGN

# INSTALLATION INSTRUCTIONS



RADIAL BAR ENDS

RADIAL BAR ENDS

R NINE T

61614

## NOTICE

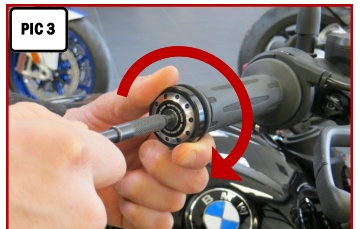
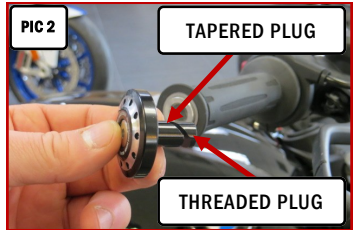
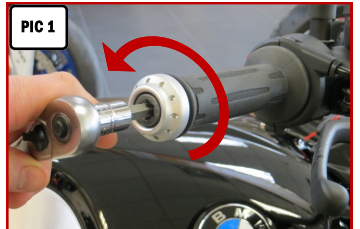
These installation instructions contain important information. Ensure that the end user receives this copy and is aware of its importance for future reference.

## NOTICE

It is the end user's responsibility to ensure that all of the fasteners (including pre-assembled) are tightened before operation of the motorcycle. Roland Sands Design will not provide warranty coverage on products or components lost or damaged due to improper installation or lack of maintenance. Periodic inspection and maintenance are required on all fasteners.

Read and understand all STEPS in the instructions before starting the installation. Park the motorcycle on a hard, level surface and turn **IGN OFF**.

1. Refer to **PIC 1**. Remove the T55 Torx screw and existing bar end; set them aside, they will not be reused.
2. Assemble the Radial Bar End by inserting the one of the included M6 Screws through the hole and sliding one of the included Tapered Plugs over the Screw as shown in **PIC 2**;  
  
begin threading the included Threaded Plug onto the Screw; leave it loose for now.
3. Insert the assembly into the end of the handlebar;  
  
Refer to **PIC 3**. Begin to tighten the Screw with a 4MM hex wrench;  
  
Threading the Screw into the Plugs will lock the Bar End in place.
4. Adjust the Bar End as desired and finish tightening the Screw.
5. Repeat **STEPS 1 through 4** for the other side.



### TIPS FOR PROPER CARE:

- 1 Your new product is made out of anodized aluminum. Anodized aluminum requires special attention when cleaning. Some cleaning products or procedures can actually remove the anodized treatment which will lead to pitting in the aluminum.
- 2 Thoroughly clean the product often with a soft cloth, mild soap and water. Regular cleaning keeps contaminants from building up.
- 3 Rinse thoroughly with **FRESH** water.
- 4 Use only metal protection products that are formulated for anodized aluminum.
- 5 **DO NOT USE** bleach or chlorides to clean the product.
- 6 **DO NOT USE** products containing abrasives to clean the product. **Never** use steel or brass wool, wire brushes, polishing wheels, rubbing or polishing compounds on the product.
- 7 **DO NOT USE** concentrated alkaline based solutions to clean the product. Many detergents are alkaline based.

Find out more about handlebars & controls we have.