



RADIAL HEADLIGHT BEZEL

RADIAL HEADLIGHT BEZEL

R NINE T

61613

## NOTICE

These installation instructions contain important information. Ensure that the end user receives this copy and is aware of its importance for future reference.

## NOTICE

It is the end user's responsibility to ensure that all of the fasteners (including pre-assembled) are tightened before operation of the motorcycle. Roland Sands Design will not provide warranty coverage on products or components lost or damaged due to improper installation or lack of maintenance. Periodic inspection and maintenance are required on all fasteners.

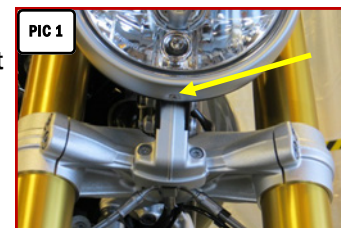
Read and understand all STEPS in the instructions before starting the installation. Park the motorcycle on a hard, level surface and turn **IGN OFF**.

1. Prepare a soft, sturdy work space at a comfortable working height within arms reach of the motorcycle.

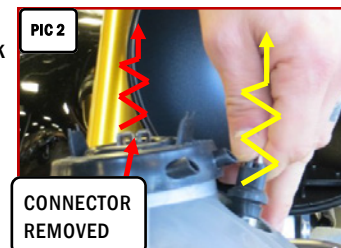
## NOTICE

Avoid damage to the motorcycle. Protect painted surfaces with a soft cloth or service cover.

2. Refer to **PIC 1**. Use a #2 Phillips head screw driver to **LOOSEN** the screw at the bottom of the existing headlight bezel.
3. Standing in front of the bike, **GENTLY** pull the bezel/bulb assembly up and out at the bottom to release it from the headlight bucket.

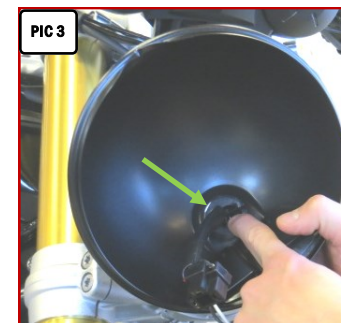


4. Refer to **PIC 2**. **GENTLY** rock the headlight connector back and forth while pulling straight up until it disconnects from the bulb.

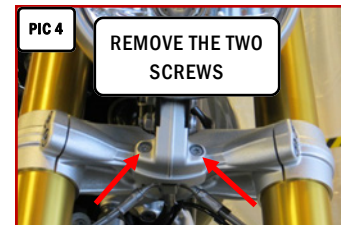


Refer to **PIC 2**. **GENTLY** rock the single-bulb grommet back and forth while pulling straight up until it releases from the bulb housing; set the bezel/bulb assembly aside on the soft, sturdy surface.

5. Refer to **PIC 3**. Use your finger to push the rubber wiring grommet through the backside of the headlight bucket; route the wiring and connectors through the hole; let the wiring hang for now.
6. Refer to **PIC 4**. Remove the two T30 Torx screws from the headlight mount;

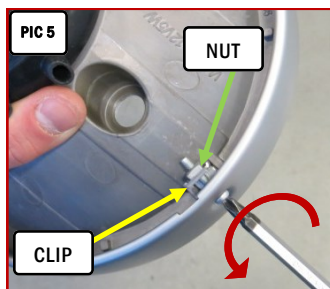


remove the headlight bucket; set the screws and bucket aside for now.





7. Refer to **PIC 5**. On the bulb housing assembly, remove the Phillips head screw from the existing bezel;
- you may need to secure the nut with needle-nose pliers while the screw is removed; remove the clip;
- set the clip, nut, and screw aside, they will not be reused.



8. Refer to **PIC 6**. Use a flat blade screwdriver to remove all of the bezel springs.



Press one of the spring legs down and under the bezel lip.

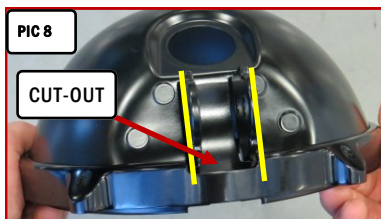
Refer to **PIC 7**. Once one spring leg has been released, pull it out. In this way, remove the remaining springs. Set all of the springs aside, they will not be reused.



9. Remove the bulb housing from the bezel; set the bezel aside, it will not be reused.

10. Remove the five screws from the Radial Headlight Bezel; separate the front and rear halves; set the screws and bezel halves on a soft, sturdy surface.

Refer to **PIC 8**. Place the included Large O-ring in the groove in the rear half of the Bezel; align the cut-out and the mounting tabs; CAREFULLY "hook" the Bezel over the backside of the headlight bucket.



**NOTE:** The Large O-ring is for the rear Bezel and the Smaller O-ring is for the front Bezel.

Ensure that the O-ring remains in place. Set the bucket/Rear Bezel assembly aside for now.

Get someone to help secure the Bezel or use masking tape to hold it in place while you perform the next few STEPS.

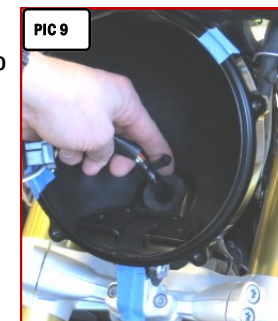
Reinstall the bucket/Bezel assembly on the fork bridge; secure it with the two Torx screws removed earlier. **Torque the screws to 70 in lbs (8 Nm).**

11. Route the wiring and connectors back into the bucket.

Push part of the wiring grommet-flange in through the hole in the bucket;

alternately, from inside the bucket, pull the flange through the hole, then on the backside of the bucket, push the grommet into place.

Refer to **PIC 9**. Inside the bucket, check the grommet by peeling up on the flange all the way around the grommet. Pull outward on the grommet from the backside to ensure that it is secure.



12. Refer to **PIC 10**. Place the remaining O-ring in the front half of the Bezel; set it within arms reach of the work area.

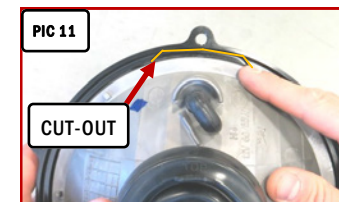
13. Insert the single bulb grommet in the bulb housing; rock it back and forth while GENTLY pushing inward until it seats in place. GENTLY pull outward on the grommet to ensure that it is secure.



14. Reconnect the headlight connector.

**Get someone to help hold the headlight in place while you perform the next STEPS.**

15. Refer to **PIC 11**. Align the Front Bezel cut-out with the top of the bulb housing; CAREFULLY place the Bezel over the front-side of the bulb housing.



Ensure that the O-ring remains in place. Set it aside for now.



Remove and discard the tape securing the Rear Bezel to the bucket (if applicable).

16. Tuck the wiring into the bucket.

17. Refer to **PIC 12**. Align the bottom of the bulb, bucket and rear Bezel half.

18. Refer to **PIC 13**. Hold the front Bezel half in place, align the bulb, Bezels, and bucket;

use an M5 hex wrench and one of the five screws to loosely secure the Bezel halves together.

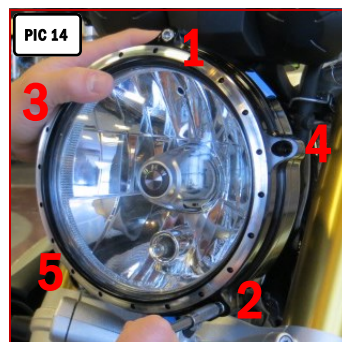
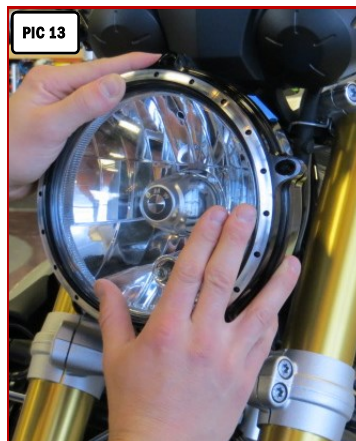
Ensure that the O-rings remain in place creating a seal.

**NOTE:** The assembly has been removed from the bike for clarity.

19. Insert the remaining screws into the Bezel; leave all of the screws loose until all have been started in their threads.

20. Refer to **PIC 14**. Using a “star” pattern, evenly tighten the five screws.

21. Turn **IGN ON** and ensure that ALL lighting properly operates before riding the motorcycle.



## NOTICE

If the screws are removed and reused later on, Loctite must be reapplied following manufacturer's recommendations.

## WARNING

**VISIBILITY IS A MAJOR CONCERN FOR MOTORCYCLISTS. A LIGHT MALFUNCTION COULD RESULT IN DEATH OR SERIOUS INJURY. ENSURE PROPER LIGHT OPERATION BEFORE RIDING THE MOTORCYCLE.**

### TIPS FOR PROPER CARE:

- 1 Your new product is made out of anodized aluminum. Anodized aluminum requires special attention when cleaning. Some cleaning products or procedures can actually remove the anodized treatment which will lead to pitting in the aluminum.
- 2 Thoroughly clean the product often with a soft cloth, mild soap and water. Regular cleaning keeps contaminants from building up.
- 3 Rinse thoroughly with FRESH water.
- 4 Use only metal protection products that are formulated for anodized aluminum.
- 5 **DO NOT USE** bleach or chlorides to clean the product.
- 6 **DO NOT USE** products containing abrasives to clean the product. **Never** use steel or brass wool, wire brushes, polishing wheels, rubbing or polishing compounds on the product.
- 7 **DO NOT USE** concentrated alkaline based solutions to clean the product. Many detergents are alkaline based.