



FITTING INSTRUCTIONS FOR CP0448 CRASH PROTECTORS
HONDA CB300R 2018



THIS KIT CONTAINS THE ITEMS PICTURED AND LABELLED BELOW.
DO NOT PROCEED UNTIL YOU ARE SURE ALL PARTS ARE PRESENT.

Please note that the way the kit is packed does not necessarily represent the way of mounting to the
 bike

THE PARTS SHOWN MAY BE REPRESENTATIVE ONLY (FOR CLARITY OF INSTRUCTIONS ONLY)

LEGEND

1. 1 x EB046 M10x385MM ENGINE BAR
2. 2 x S1134 SPACER
3. 2 x B0431 10MM CRASH BOBBINS (L&R SIDES)
4. 2 x LW0001 SHAKE PROOF WASHERS
5. 2 x M10 WASHERS 19mm O/D STAINLESS
6. 2 x M10x1.25 NYLOC NUTS STAINLESS
7. 2 x BC0002BK BOBBIN CAPS
8. 4 x RGS0005 BUBBLE STICKER
9. 1 x FITTING INSTRUCTIONS

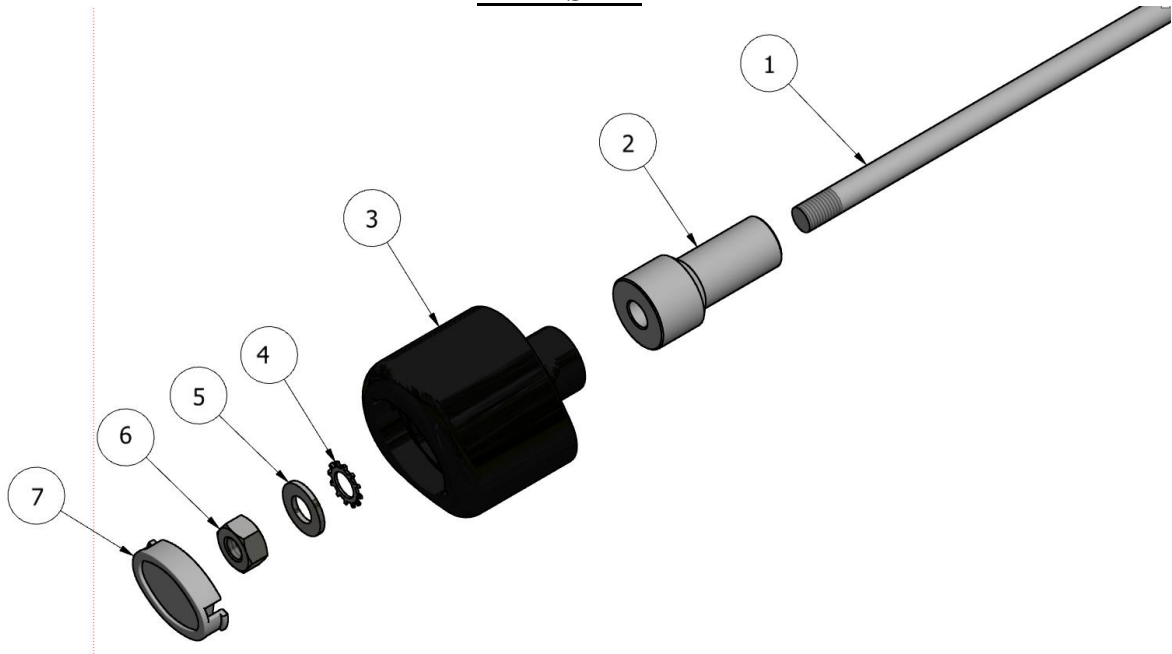
Please note that in cases where kits are packed with rubber washers holding the components onto the bolt – *the rubber washers should be thrown away!*

TOOLS REQUIRED

- A socket set to include 14/17mm A/F and wrench.
 - Torque wrench (up to 40Nm)
 - Soft Faced Mallet.



LEFT SIDE



RIGHT SIDE

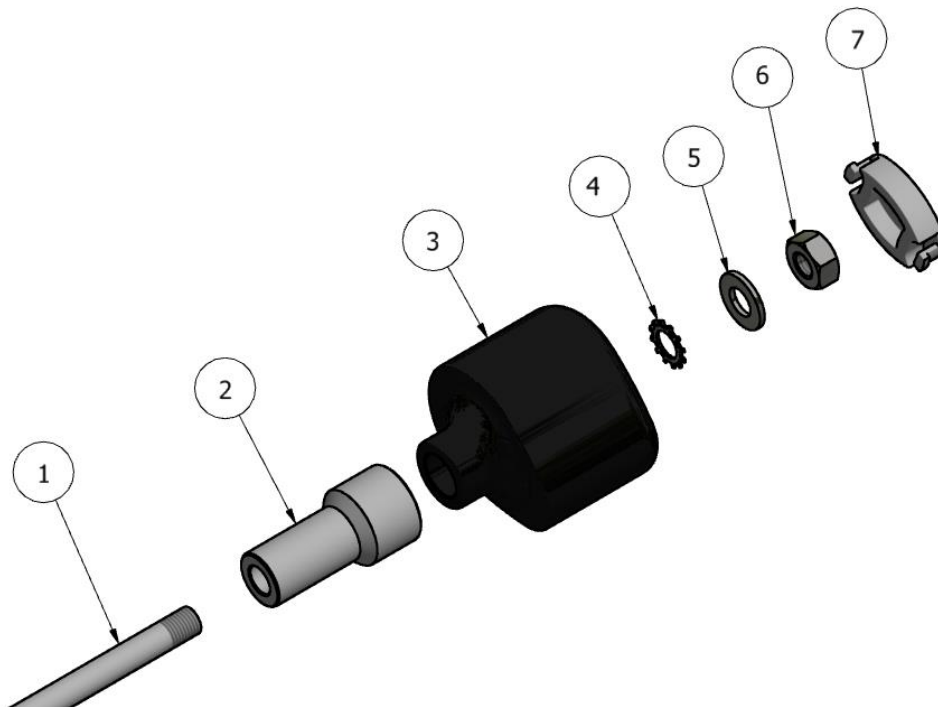




IMAGE 1



IMAGE 2



IMAGE 3



IMAGE 4



IMAGE 5



IMAGE 6



INSTRUCTIONS

- It is a good idea to support the engine from underneath to prevent any chance of movement within the frame during fitting.
- Undo the nut on the engine bolt located mid-engine on the right-hand side of the motorcycle, as arrowed in image 1.
- Take the R&G engine bar (part 1), with a soft hammer, use it to knock through the OEM engine bolt leaving equal amounts protruding on each side of the frame as in image 2.
- Slide the spacers (part 2) onto each end of bar and ensure that the larger diameter of the spacers are facing outwards as shown in image 3.
- Slide the crash protectors (part 3) onto either end of the bar, followed by a lock washer (part 4) and an M10 washer (part 5). Then fit both Nyloc Nuts (part 6) on the end of the bar as shown in image 4.
- **PLEASE NOTE BOBBIN MUST BE POSITIONED AS SEEN IN THE PICTURE BELOW WITH BIGGER END TOWARD FRONT OF BIKE.**



- Tighten the nuts until you feel some compression from inside the protector. Turn a little more so that you feel the compression increase slightly. Tighten to 40Nm of torque (do not exceed this figure, as damage can occur to the motorcycle and the bolt). At this point visually check that the engine bar protrudes past the nyloc nut by at least 1 and a half threads on both sides as shown in image 5.
- When the protectors are tight fit the caps (part 6) into the protector as shown in image 6.
- If not already fitted fit bubble sticker (part 7) into recess of bobbin cap.

DUE TO THE RISK OF CROSS-THREADING OF BOLTS ETC; WE ALWAYS RECOMMEND THAT OUR PRODUCTS BE FITTED BY ONE OF OUR OFFICIAL DEALERS OR A QUALIFIED MECHANIC.