



FITTING INSTRUCTIONS FOR CP0396BL
AERO CRASH PROTECTORS BMW F800 R '15- NON-DRILL KIT



Picture A

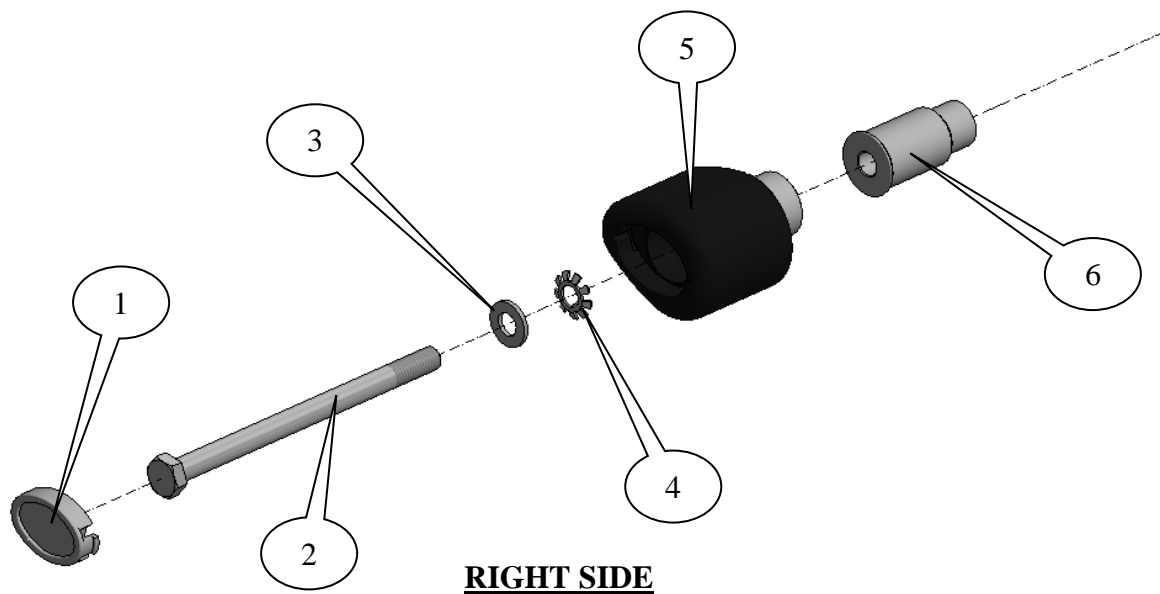


Picture B

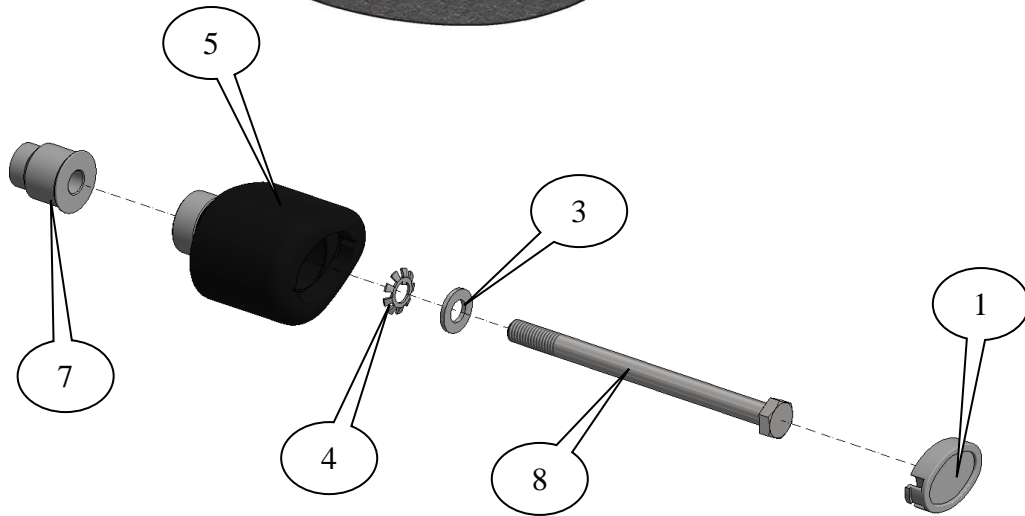
THIS KIT CONTAINS THE ITEMS PICTURED AND LABELLED BELOW.
DO NOT PROCEED UNTIL YOU ARE SURE ALL PARTS ARE PRESENT.

Please note that the way the kit is packed does not necessarily represent the way of mounting to the bike.

THE PARTS SHOWN MAY BE REPRESENTATIVE ONLY (FOR CLARITY OF INSTRUCTIONS ONLY).



RIGHT SIDE



LEFT SIDE

LEGEND

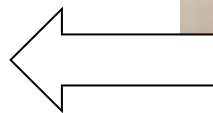
- ITEM 1 = CRASH PROTECTOR CAPS (BC0002) (x2).
 ITEM 2 = M10 x 1.5 x 160mm LONG HEX HEAD BOLT (x1).
 ITEM 3 = M10 WASHERS (x2).
 ITEM 4 = LOCK-WASHERS (LW0001) (x2).
 ITEM 5 = CRASH PROTECTOR (B0431 with CS341 & S0255) (x2).
 ITEM 6 = SPACER (S0926 – 53mm LONG) (x1).
 ITEM 7 = SPACER (S0925 – 29mm LONG) (x1).
 ITEM 8 = M10 x 1.5 x 140mm LONG HEX HEAD BOLT (x1).

Please note that in cases where kits are packed with rubber washers holding the components onto the bolt – *the rubber washers should be thrown away!*

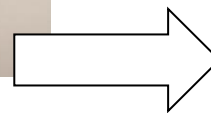
TOOLS REQUIRED

- T50 Torx socket and wrench.
- Socket set to include 17mm socket and wrench.
- Torque wrench (up to 20N/m).

TOWARDS REAR
OF BIKE



TOWARDS FRONT
OF BIKE



PICTURE C

GENERAL TORQUE SETTINGS

- M4 BOLT = 8Nm
 M5 BOLT = 12Nm
 M6 BOLT = 15Nm

R&G Racing



M8 BOLT = 20Nm

M10 BOLT = 40Nm

FITTING INSTRUCTIONS

- Remove the front engine mounting bolt using a T50 Torx socket
- Slide one of the 10mm washers (item 3) onto the M10 x 160mm long hex head bolt (item 2) so the washer sits against head of bolt.
- Slide one serrated locking washer (item 4) over the bolt so it sits against the washer just fitted.
- Next slide the bolt with washers through either crash protector (item 5) so the head of the bolt and washers go into the counter-bore in.
- Place the longer spacer onto the exposed end of the bolt, ensuring the larger diameter sits against the crash bobbin.
- Check the assembly matches the exploded diagram on page 1 and offer the assembly up to the bike as shown in the pictures on page 1.
- Tighten the crash protector bolt until you feel some compression from inside the protector using a 17mm socket and wrench. **PLEASE NOTE THE CRASH PROTECTOR MUST BE POSITIONED AS IN PICTURE 'C' WITH BIGGER END TOWARD FRONT OF BIKE.** Turn a little more so that you feel the compression increase slightly. Then apply a quarter turn. Do not over tighten as damage can occur to the bike. Do not exceed 40N/m of torque.
- Repeat the above procedure to fit the remaining crash protector to the left side of the bike, using the remaining shorter bolt and shorter spacer.
- If not already fitted fit bubble stickers into recess of both crash protector caps.
- Fit crash protector caps into both crash protectors.

CONSUMER NOTICE

The catalogue description and any exhibition of samples are only broad indications of the Products and R&G may make design changes which do not diminish their performance or visual appeal and supplying them in such state shall conform to the order. The Buyer acknowledges no representation or warranty (other than as to title) has been given or will apply to the Products other than those in R&G's order or confirmation and the Buyer confirms it has chosen the Products as being of merchantable quality and suitable for its particular purposes. Where R&G fits the Products or undertakes other services it shall exercise reasonable skill and care and rectify any fault free of charge unless the workmanship has been disturbed. The Buyer is responsible for ensuring that the warranty on the motorcycle is not affected by the fitting of the Products. On return of any defective Products R&G shall at its option either supply a replacement or refund the purchase money but shall not be liable if the Products have been modified or used or maintained otherwise than in accordance with R&G's or manufacturer's instructions and good engineering practice or if the defect arises from accident or neglect. Other than identified above and subject to R&G not limiting its liability for causing death and personal injury, it shall not be liable for indirect or consequential loss and otherwise its liability shall be limited to the amounts paid by the Buyer for the Products or the fitting or service concerned. These terms do not affect the Buyer's statutory rights.