



FITTING INSTRUCTIONS FOR AB0040BK ADVENTURE BARS
SUZUKI SV650 X 2018-



THIS KIT CONTAINS THE ITEMS PICTURED AND LABELLED BELOW.
DO NOT PROCEED UNTIL YOU ARE SURE ALL PARTS ARE PRESENT.

Please note that the way the kit is packed does not necessarily represent the way of mounting to the bike

Please note that in cases where kits are packed with rubber washers holding the components onto the bolt – *the rubber washers should be thrown away!*

THE PARTS SHOWN MAY BE REPRESENTATIVE ONLY (FOR CLARITY OF INSTRUCTIONS ONLY)

GENERAL TORQUE SETTINGS

- M4 BOLT = 8Nm
- M5 BOLT = 12Nm
- M6 BOLT = 15Nm
- M8 BOLT = 20Nm
- M10 BOLT = 40Nm

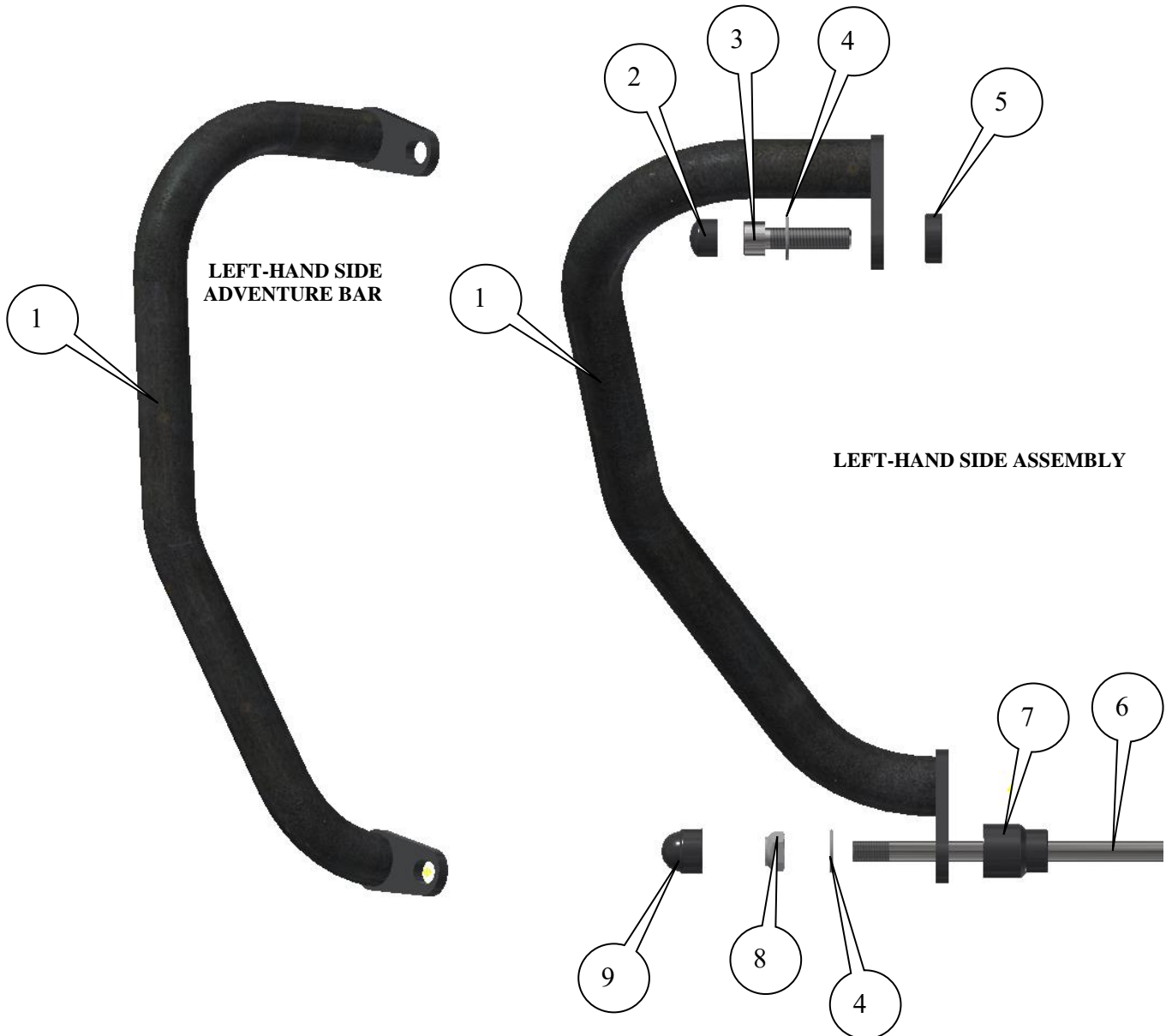
TOOLS REQUIRED

- Socket set to include 14 and 17mm sockets and wrench or spanners.
 - Set of Allen keys to include 8mm A/F or socket bits.
 - Torque wrench (up to 40Nm).



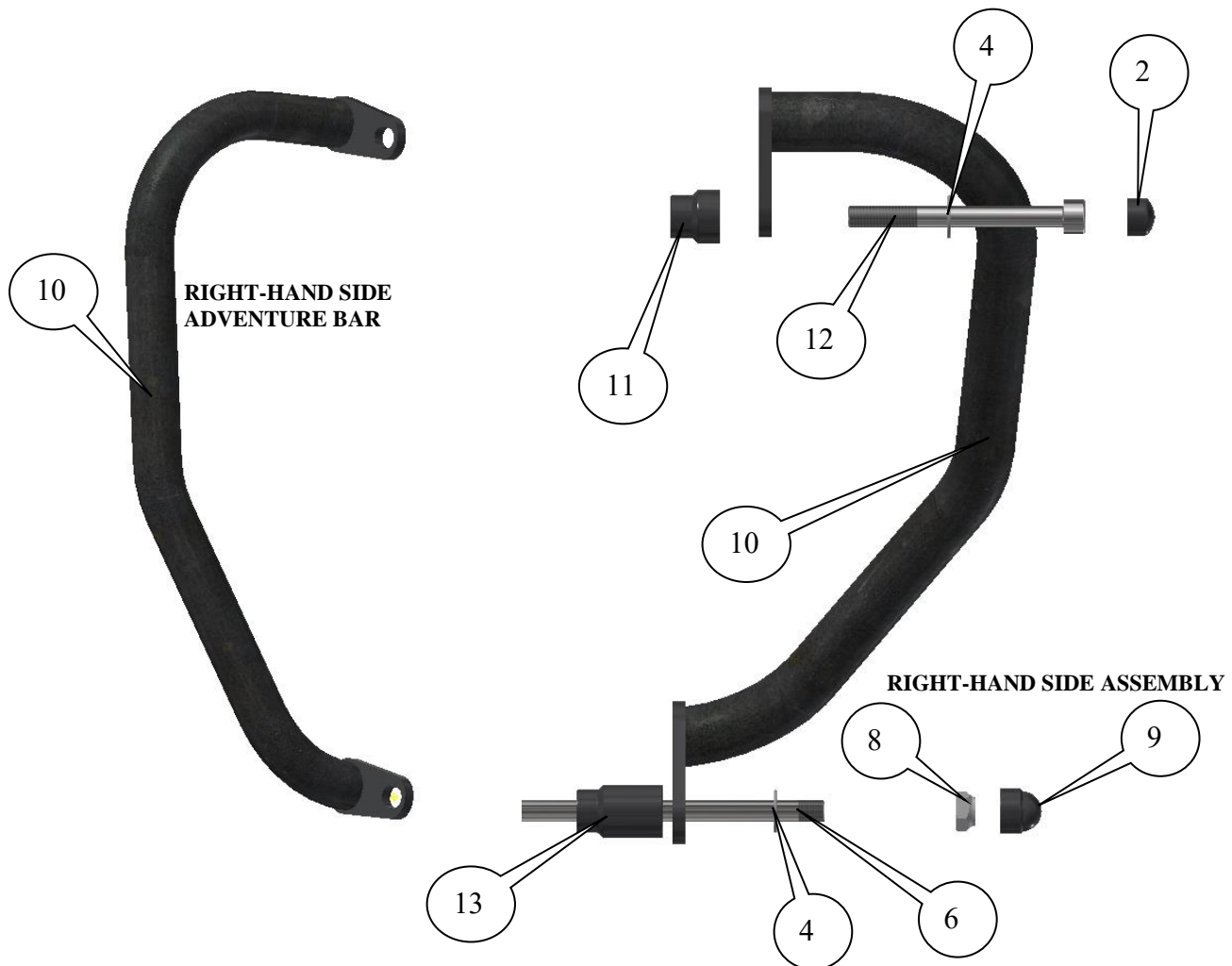
In This Kit, There Should Be

- 1x Left-Hand Side Adventure Bar (AB0040 LHS ASSY).
- 1x Right-Hand Side Adventure Bar (AB0040 RHS ASSY).
 - 1x Engine bar (EB093=M10x210mm long).
 - 1x Upper left-hand side spacer (S0327=8mm long).
 - 1x lower left-hand side spacer (S1140=30mm long).
 - 1x Upper right-hand side spacer (S1141=23mm long).
 - 1x Lower right-hand side spacer (S1142=40mm long).
- 1x M10x1.25x40mm long cap head bolt (upper left-hand side).
- 1x M10x1.25x100mm long cap head bolt (upper right-hand side).
 - 2x M10 Nyloc Nuts.
 - 4x M10 Washers.
 - 2x M10 Nut caps (NC0004).
- 2x M10 Cap head bolt caps (NC0007).





AB0040

**LEGEND**

ITEM 1 = ADVENTURE BAR LEFT-HAND SIDE (AB0040 LHS ASSY=WELDED ASSEMBLY) (x1).

ITEM 2 = M10 CAP HEAD BOLT RUBBER CAPS (NC0007) (x2).

ITEM 3 = M10x1.25x40mm LONG CAP HEAD BOLT (UPPER LEFT-HAND SIDE) (x1).

ITEM 4 = M10 WASHERS (x4).

ITEM 5 = LEFT-HAND SIDE UPPER SPACER (S0327=8mm LONG) (x1).

ITEM 6 = M10 ENGINE BAR (EB093=210mm LONG) (x1).

ITEM 7 = LEFT-HAND SIDE LOWER SPACER (S1140=30mm LONG) (x1).

ITEM 8 = M10 NYLOC NUTS (x2).

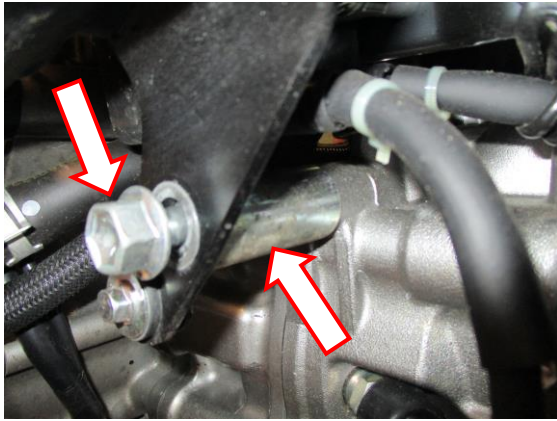
ITEM 9 = M10 NUT CAPS (NC0004) (x2).

ITEM 10 = ADVENTURE BAR RIGHT-HAND SIDE (AB0040 RHS ASSY =WELDED ASSEMBLY) (x1).

ITEM 11 = RIGHT-HAND SIDE UPPER SPACER (S1141=23mm LONG) (x1).

ITEM 12 = M10x1.25x100mm LONG CAP HEAD BOLT (UPPER RIGHT-HAND SIDE) (x1).

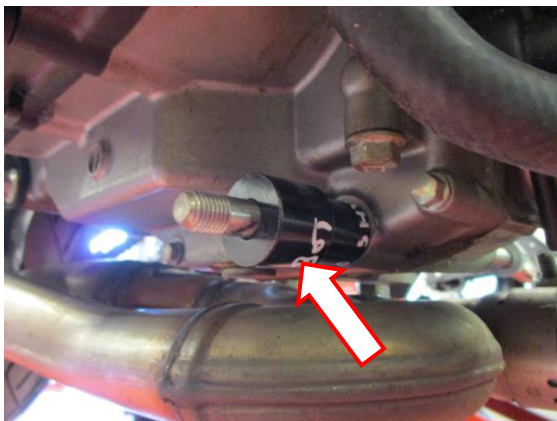
ITEM 13 = RIGHT-HAND SIDE LOWER SPACER (S1142=40mm LONG) (x1).



PICTURE 1



PICTURE 2



PICTURE 3



PICTURE 4



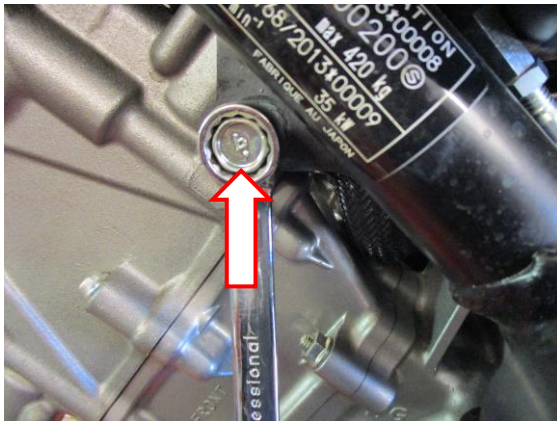
PICTURE 5



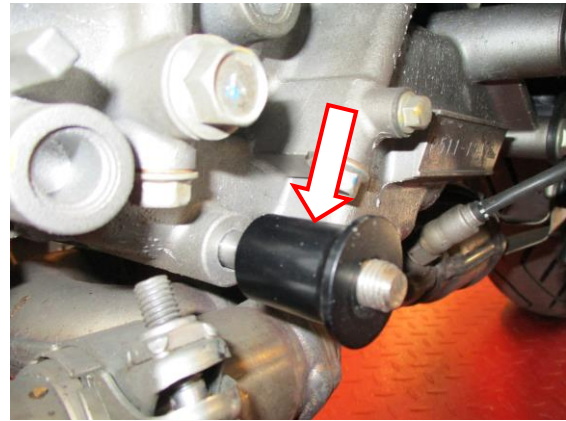
PICTURE 6



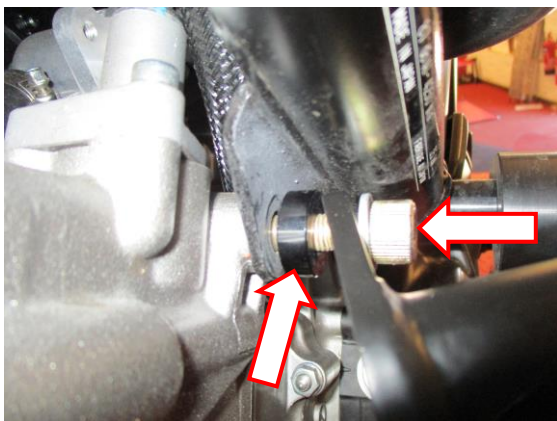
AB0040



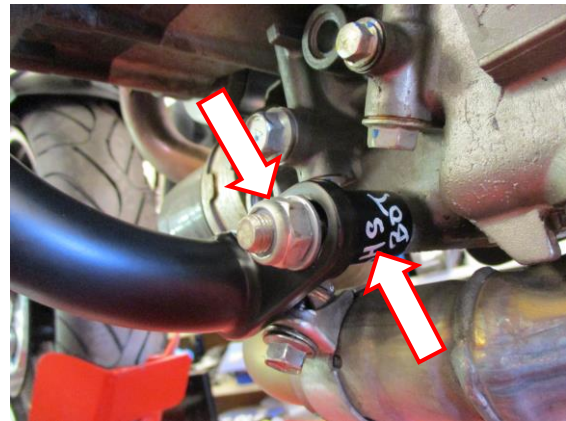
PICTURE 7



PICTURE 8



PICTURE 9



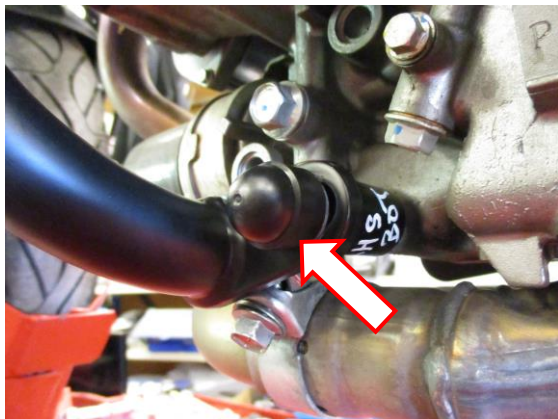
PICTURE 10



PICTURE 11



PICTURE 12



PICTURE 13



PICTURE 14

FITTING INSTRUCTIONS

Off side (right side as you sit on bike)

- Remove the engine bolt arrowed in picture 1, please be aware that the original spacer will become loose and must be used on re-assembly.
- Place the new engine bar (item 6) into the hole arrowed in picture 2, please leave equal amounts protruding from either side.
- Place the right-hand lower spacer (item 13=40mm long) onto the exposed engine bar on the right-hand side as shown in picture 3.
- Place one of the M10 washers onto the longer M10 cap head bolt (item 12=100mm long), then place the bolt and washer through the upper mounting bracket of the right-hand side adventure bar (item 10).
- Place the right-hand side upper spacer (item 11=23mm long) onto the exposed thread of the bolt as shown in the right-hand side assembly.
- Offer the assembly into position as shown in the picture 4 and secure the upper bolt ensuring the original spacer is in position and the lower mounting bracket fits over the exposed engine bar as shown in picture 5.
- Place one of the M10 washers (item 4) and one of the Nyloc nuts onto the exposed thread as shown in picture 6, please ensure the nut is fully engaged but do not tighten at this stage.

Near side (left side as you sit on bike)

- Remove the engine bolt arrowed in picture 7.
- Place the left-hand lower spacer (item 7=30mm long) onto the exposed engine bar on the left-hand side as shown in picture 8.
- Place one of the M10 washers onto the shorter remaining M10 cap head bolt (item 3=40mm long), then place the bolt and washer through the upper mounting bracket of the left-hand side adventure bar (item 1) as shown in picture 9.
- Place the left-hand side upper spacer (item 5=8mm long) onto the exposed thread of the bolt as shown in the left-hand side assembly and picture 9.
- Offer the assembly into position as shown in the top picture and secure the upper bolt ensuring the lower mounting bracket fits over the exposed engine bar as shown in picture 10.
- Place one of the M10 washers (item 4) and one of the Nyloc nuts onto the exposed thread as shown in picture 10, please ensure the nut is fully engaged and tighten.
- Tighten all nuts and bolts and fit the caps as shown in pictures 11, 12, 13 and 14.



ISSUE 1 14/11/2018 (NSY)

CONSUMER NOTICE

The catalogue description and any exhibition of samples are only broad indications of the Products and R&G may make design changes which do not diminish their performance or visual appeal and supplying them in such state shall conform to the order. The Buyer acknowledges no representation or warranty (other than as to title) has been given or will apply to the Products other than those in R&G's order or confirmation and the Buyer confirms it has chosen the Products as being of merchantable quality and suitable for its particular purposes. Where R&G fits the Products or undertakes other services it shall exercise reasonable skill and care and rectify any fault free of charge unless the workmanship has been disturbed. The Buyer is responsible for ensuring that the warranty on the motorcycle is not affected by the fitting of the Products. On return of any defective Products R&G shall at its option either supply a replacement or refund the purchase money but shall not be liable if the Products have been modified or used or maintained otherwise than in accordance with R&G's or manufacturer's instructions and good engineering practice or if the defect arises from accident or neglect. Other than identified above and subject to R&G not limiting its liability for causing death and personal injury, it shall not be liable for indirect or consequential loss and otherwise its liability shall be limited to the amounts paid by the Buyer for the Products or the fitting or service concerned. These terms do not affect the Buyer's statutory rights.