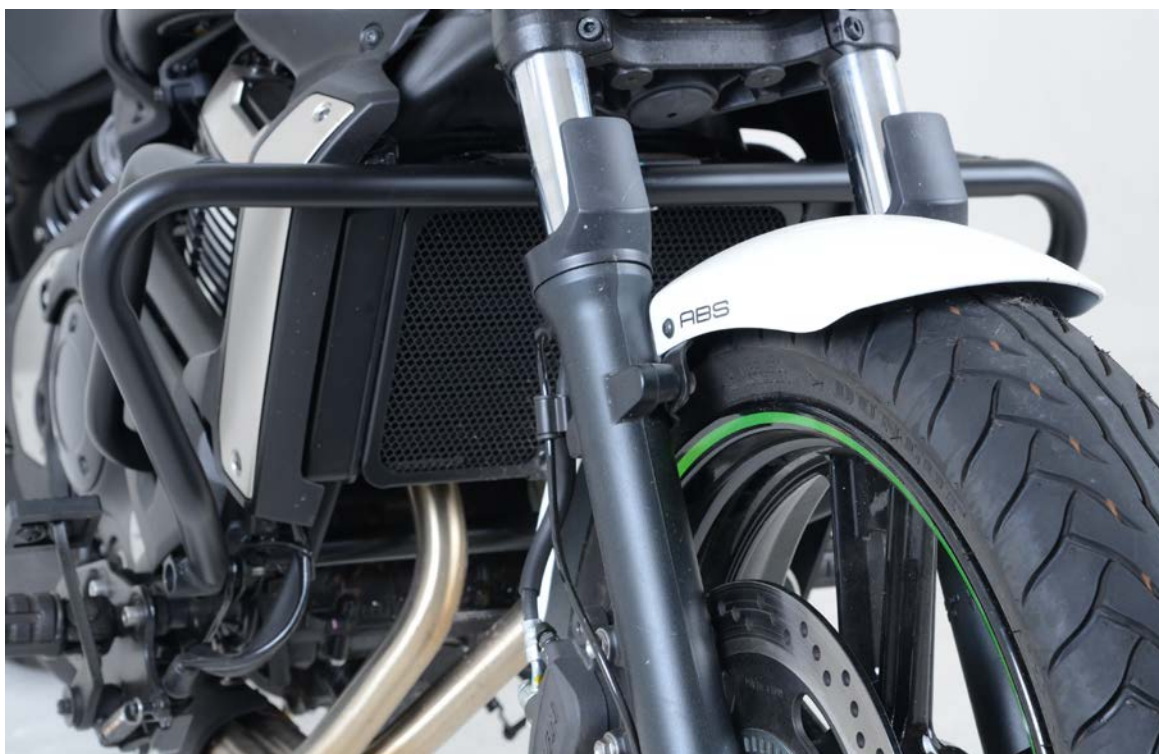




**FITTING INSTRUCTIONS FOR AB0017BK ADVENTURE BARS**  
**KAWASAKI VULCAN S '15-**



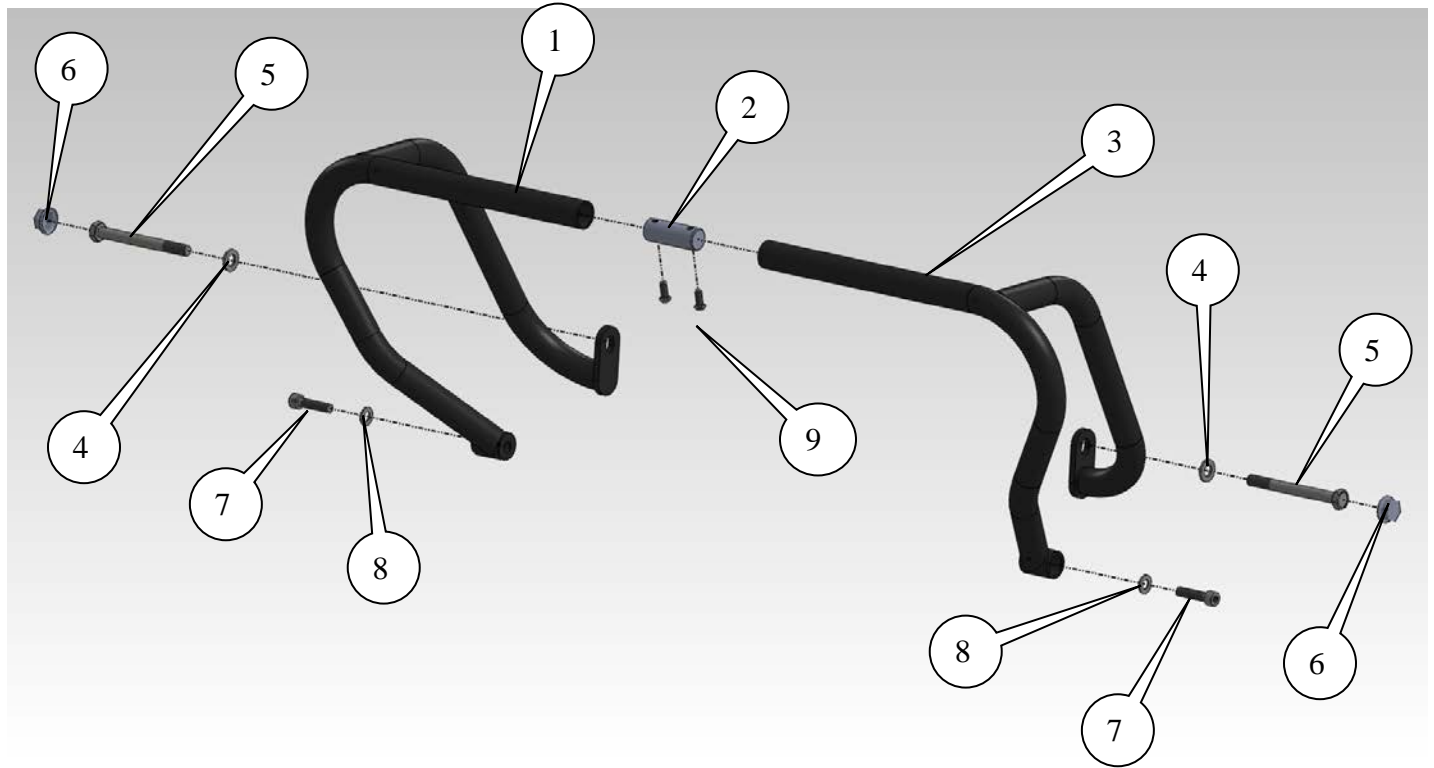
**THIS KIT CONTAINS THE ITEMS PICTURED AND LABELLED BELOW.**  
**DO NOT PROCEED UNTIL YOU ARE SURE ALL PARTS ARE PRESENT.**

**Please note that the way the kit is packed does not necessarily represent the way of mounting to the bike**

THE PARTS SHOWN MAY BE REPRESENTATIVE ONLY (FOR CLARITY OF INSTRUCTIONS ONLY)

**GENERAL TORQUE SETTINGS**

- M4 Bolt = 8 Nm
- M5 Bolt = 12 Nm
- M6 Bolt = 15 Nm
- M8 Bolt = 20 Nm
- M10 Bolt = 40 Nm
- M12 Bolt = 40 Nm
- M12 Nyloc Nut = 40 Nm



### **LEGEND**

- ITEM 1 = ADVENTURE BAR RIGHT-HAND SIDE (CB046) (x1).
- ITEM 2 = TUBE CONNECTING BLOCK (M0455) (x1).
- ITEM 3 = ADVENTURE BAR LEFT-HAND SIDE (CB045) (x1).
- ITEM 4 = M10 WASHERS (x2).
- ITEM 5 = M10 x 1.25 x 120mm LONG HEX HEAD BOLTS (x2).
- ITEM 6 = M10 RUBBER HEX HEAD CAPS (x2).
- ITEM 7 = M8 x 1.25 x 35mm LONG CAP HEAD BOLTS (x2).
- ITEM 8 = M8 WASHERS (x2).
- ITEM 9 = M6 x 16mm LONG BUTTON HEAD BOLTS (x2).

### **TOOLS REQUIRED**

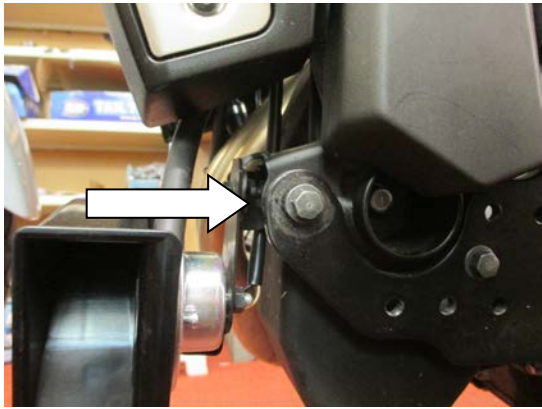
- Socket set to include 10, 14 & 17mm sockets and wrench, plus extension bars.
  - Socket set to include 4 & 8mm AF allen key sockets and wrench.
    - Torque wrench (up to 40Nm).
    - Superglue or silicon adhesive.



Picture 1



Picture 2



Picture 3



Picture 4



Picture 5



Picture 6



Picture 7



Picture 8



Picture 9

---

## **FITTING INSTRUCTIONS**

- On the left side of the bike, remove the front engine bolt that sits within the hole of the plastic cover, using a 14mm socket and extension, as shown in picture 1.
- Remove the bolt and the captive nut and spacer will drop out, as shown in picture 2. The captive nut and spacer need to be re-used when fitting the engine bars.
- Remove the 10mm hex head bolt that is positioned on the footrest plate, just below the radiator cowling, as arrowed in picture 3.
- Take the left side adventure bar (item 3 – CB045) and locate one M10 x 1.25 x 120mm long head hex bolt (item 5) and M10 washer (item 4) through the slotted hole on the mounting plate of the adventure bar and one M8 x 35mm long cap head bolt (item 7) and M8 washer (item 8) through the hole in the boss as shown in the exploded drawing above.



- Re-position the OEM captive nut in the holder on the back of the engine mount (accessed by hand from besides the exhaust headers) and re-position the original spacer in line with the nut and mounting hole.
- Offer the left side adventure bar assembly up to the bike whilst locating the bolts, before loosely tightening them a handful of turns to hold the adventure bar in place, as shown in picture 4.
- Take the connecting block (item 2 – M0455) and position it inside the open ended tube that is now below the headstock, before fitting one M6 x 16mm long button head bolt (item 9) through the hole on the underside of the adventure bar and into the threaded hole on the connecting block. Engage the thread a handful of turns.
- On the right side of the bike, remove the front engine bolt that sits within the plastic hole of the plastic cover, using a 14mm socket and extension, as shown in picture 5.
- Remove the bolt and the captive nut and spacer will drop out, as shown in picture 6. The captive nut and spacer need to be re-used when fitting the engine bars.
- Remove the 10mm hex head bolt that is positioned on the footrest plate, just below the radiator cowling, as arrowed in picture 7.
- Take the right side adventure bar (item 1 – CB046) and locate the remaining M10 x 1.25 x 120mm long head hex bolt (item 5) and M10 washer (item 4) through the slotted hole on the mounting plate of the adventure bar and the remaining M8 x 35mm long cap head bolt (item 7) and M8 washer (item 8) through the hole in the boss as shown in the exploded drawing above.
- Re-position the OEM captive nut in the holder on the back of the engine mount (accessed by hand from underneath the radiator) and re-position the original spacer in line with the nut and mounting hole.
- Offer the right side adventure bar assembly up to the bike whilst locating the bolts, ensuring the open ended tube at the front locates over the connecting block previously fitted to the left side adventure bar. Loosely tighten the bolts a handful of turns to hold the adventure bar in place, as shown in picture 8.
- Fit the remaining M6 x 16mm long button head bolt through the hole on the underside of the right side adventure bar and loosely tighten into the threaded hole of the connecting block, as shown in picture 9.
- Once all the bolts are located, check that the adventure bar is fitted correctly before tightening all the bolts evenly.
- The bolts can now be fully tightened to the recommended torque settings provided above.
- Fit the rubber caps supplied in the kit onto the hex headed bolts. *It is advised to apply a small amount of superglue or silicon adhesive before fitting these to ensure they don't come off.*

#### CONSUMER NOTICE

The catalogue description and any exhibition of samples are only broad indications of the Products and R&G may make design changes which do not diminish their performance or visual appeal and supplying them in such state shall conform to the order. The Buyer acknowledges no representation or warranty (other than as to title) has been given or will apply to the Products other than those in R&G's order or confirmation and the Buyer confirms it has chosen the Products as being of merchantable quality and suitable for its particular purposes. Where R&G fits the Products or undertakes other services it shall exercise reasonable skill and care and rectify any fault free of charge unless the workmanship has been disturbed. The Buyer is responsible for ensuring that the warranty on the motorcycle is not affected by the fitting of the Products. On return of any defective Products R&G shall at its option either supply a replacement or refund the purchase money but shall not be liable if the Products have been modified or used or maintained otherwise than in accordance with R&G's or manufacturer's instructions and good engineering practice or if the defect arises from accident or neglect. Other than identified above and subject to R&G not limiting its liability for causing death and personal injury, it shall not be liable for indirect or consequential loss and otherwise its liability shall be limited to the amounts paid by the Buyer for the Products or the fitting or service concerned. These terms do not affect the Buyer's statutory rights.