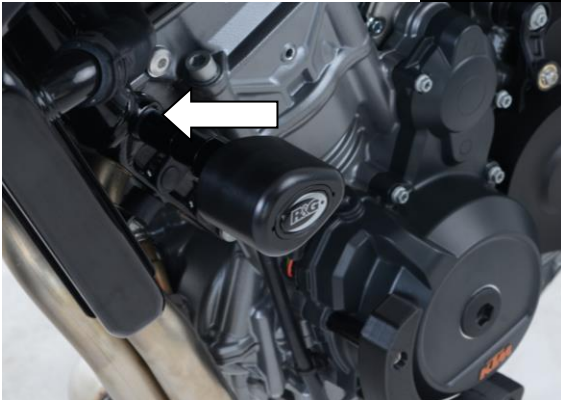
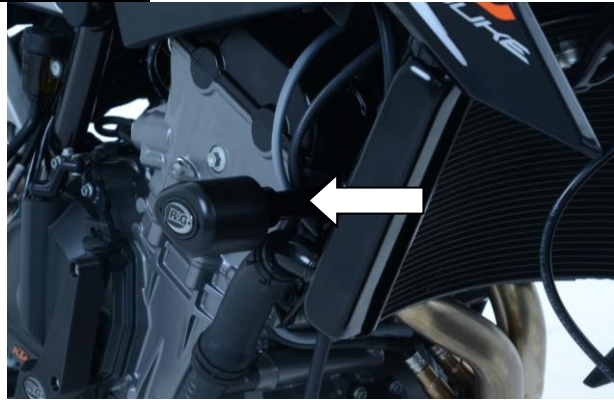




FITTING INSTRUCTIONS FOR CP0446 CRASH PROTECTORS
KTM DUKE 790 2018-



PICTURE A



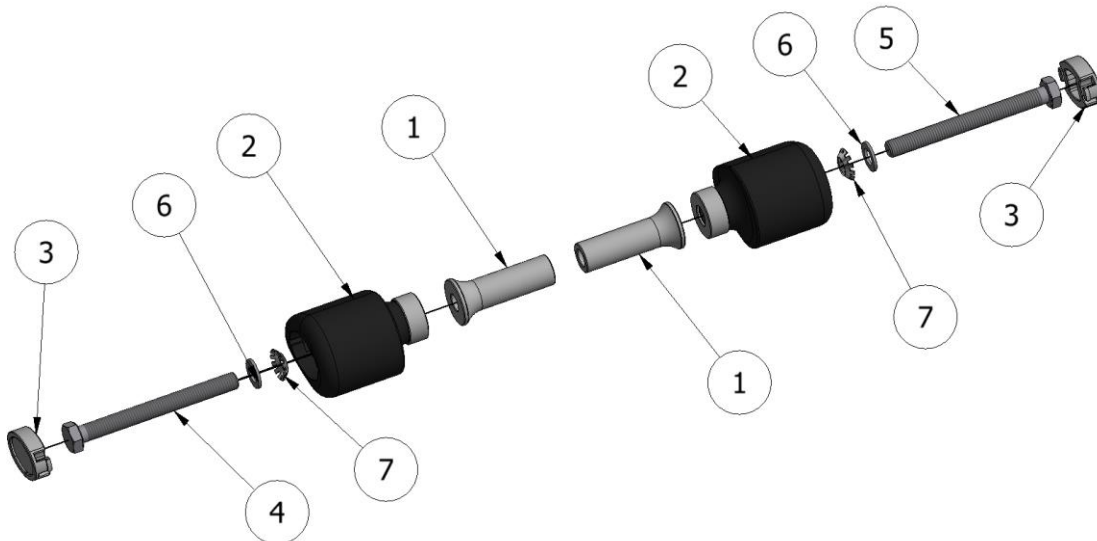
PICTURE B

THIS KIT CONTAINS THE ITEMS PICTURED AND LABELLED BELOW.
DO NOT PROCEED UNTIL YOU ARE SURE ALL PARTS ARE PRESENT.

Please note that the way the kit is packed does not necessarily represent the way of mounting to the bike

THE PARTS SHOWN MAY BE REPRESENTATIVE ONLY (FOR CLARITY OF INSTRUCTIONS ONLY)

LEFT SIDE



RIGHT SIDE



LEGEND

- ITEM 1= 60mm SPACER (S1119) (x1).
ITEM 2= CRASH PROTECTOR (B0431 WITH CS341) (x2).
ITEM 3= CRASH PROTECTOR CAPS (BC0002) (x2).
ITEM 4= M10x1.5x140mm LONG HEX HEAD BOLT (x1).
ITEM 5= M10x1.5x145mm LONG HEX HEAD BOLT (x1).
ITEM 6= M10 PLAIN WASHERS (x2).
ITEM 7= LOCK-WASHERS (LW0001) (x2).
ITEM 8= BUBBLE-STICKERS (RGS0005) (x4).

Page | 2

Please note that in cases where kits are packed with rubber washers holding the components onto the bolt – *the rubber washers should be thrown away!*

TOOLS REQUIRED

- Socket set to include 15, 17 and 20mm sockets and wrench.
 - T45 Torx driver.
- Torque wrench (up to 40Nm).



INSTRUCTIONS

- On the left side undo the upper engine bolt (as arrowed in pictures A and B).
- Take the left side 140mm M10 bolt (item 4) and slide a plain washer (item 6) up to the head of the bolt, followed by a lock-washer (item 7). Pass the bolt through a crash protector (item 2) and then slide the 60mm spacer (item 1) over the bolt (the larger diameter sits against the back face of protector) and up to the protector.
- Fit this assembly to the left side engine bolt hole.
- Repeat this process for the right side of the bike using the 145mm bolt (item 5).
- **PLEASE NOTE BOBBIN MUST BE POSITIONED AS IN PICTURE 'C' ABOVE WITH BIGGER END TOWARD FRONT OF BIKE.** Tighten bolt until you feel some compression from inside the protector. Turn a little more so that you feel the compression increase slightly. Then apply a quarter turn. Tighten to 40Nm of torque (do not exceed this figure, as damage can occur to the motorcycle and the bolt).
- When the protectors are tight fit the caps in to the protector.
- If not already fitted fit bubble sticker into recess of bobbin cap.

DUE TO THE RISK OF CROSS-THREADING OF BOLTS ETC; WE ALWAYS RECOMMEND THAT OUR PRODUCTS BE FITTED BY ONE OF OUR OFFICIAL DEALERS OR A QUALIFIED MECHANIC.



CONSUMER NOTICE

The catalogue description and any exhibition of samples are only broad indications of the Products and R&G may make design changes which do not diminish their performance or visual appeal and supplying them in such state shall conform to the order. The Buyer acknowledges no representation or warranty (other than as to title) has been given or will apply to the Products other than those in R&G's order or confirmation and the Buyer confirms it has chosen the Products as being of merchantable quality and suitable for its particular purposes. Where R&G fits the Products or undertakes other services it shall exercise reasonable skill and care and rectify any fault free of charge unless the workmanship has been disturbed. The Buyer is responsible for ensuring that the warranty on the motorcycle is not affected by the fitting of the Products. On return of any defective Products R&G shall at its option either supply a replacement or refund the purchase money but shall not be liable if the Products have been modified or used or maintained otherwise than in accordance with R&G's or manufacturer's instructions and good engineering practice or if the defect arises from accident or neglect. Other than identified above and subject to R&G not limiting its liability for causing death and personal injury, it shall not be liable for indirect or consequential loss and otherwise its liability shall be limited to the amounts paid by the Buyer for the Products or the fitting or service concerned. These terms do not affect the Buyer's statutory rights.