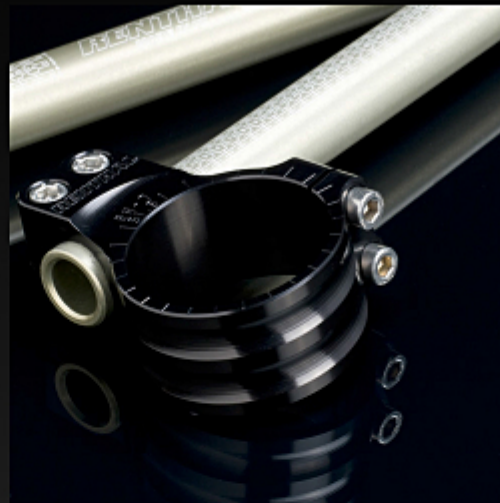




## Bars

Engineered from the same 7010 Aluminium that has been used in over 300 Motocross titles. The Bars are individually machined in our state of the art CNC facility in Manchester, UK. Hard Anodised for longevity.



## Clamps

The clamps are CNC machined from billet aluminium. A high spec black anodise process provides the clamps with an attractive and functional finish. Available in 5 different diameters



## Laser Marking

To help with the setup of the Renthal Clip-On handlebars, strategically placed laser marks are used to help align, rotate and position to your personal setup.



## Bar Ends

The nylon bar ends are designed to protect the grip ends. They are removable and replaceable.

Learn more about [other motorcycle handlebars & controls](#) by [Renthal on our website](#).