



# Core Technology

## BILLET FOR BETTER PERFORMANCE

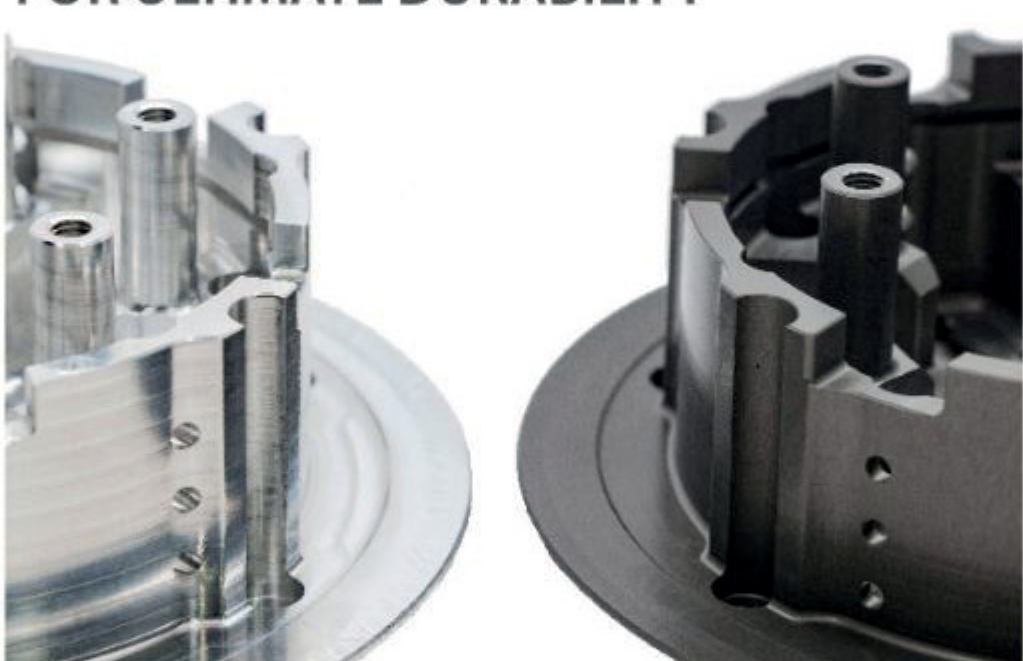


**Hard Anodized Billet Aluminum Construction Increases Durability**  
Our Core technology is the foundation of our premium clutch systems. Engineered and made from aerospace quality billet aluminum, Core components optimize oil flow, last longer and reduce temperatures to maintain consistent performance even in extreme conditions.

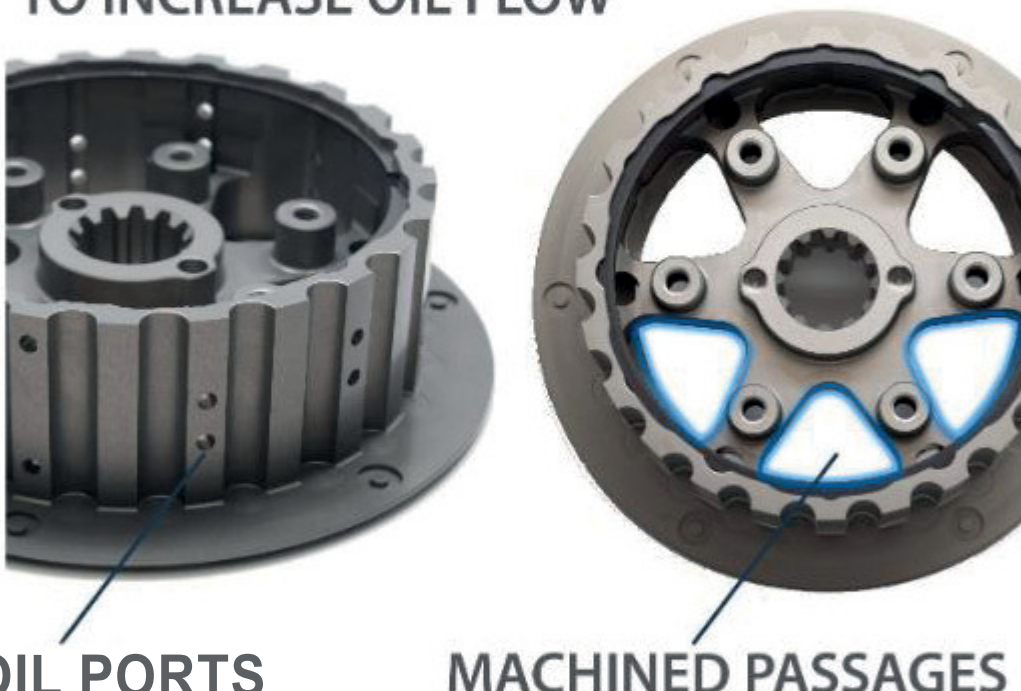
**Engineered to Increased Oil Flow**  
More oil flows through the clutch, decreasing operating temperatures. Decreased temperatures decrease fade, making your clutch pack last longer.

Core Technology is Found In:  
- RADIUSCX  
- CORE MANUAL TORQDRIVE  
- CORE MANUAL  
- CORE EXP 3.0

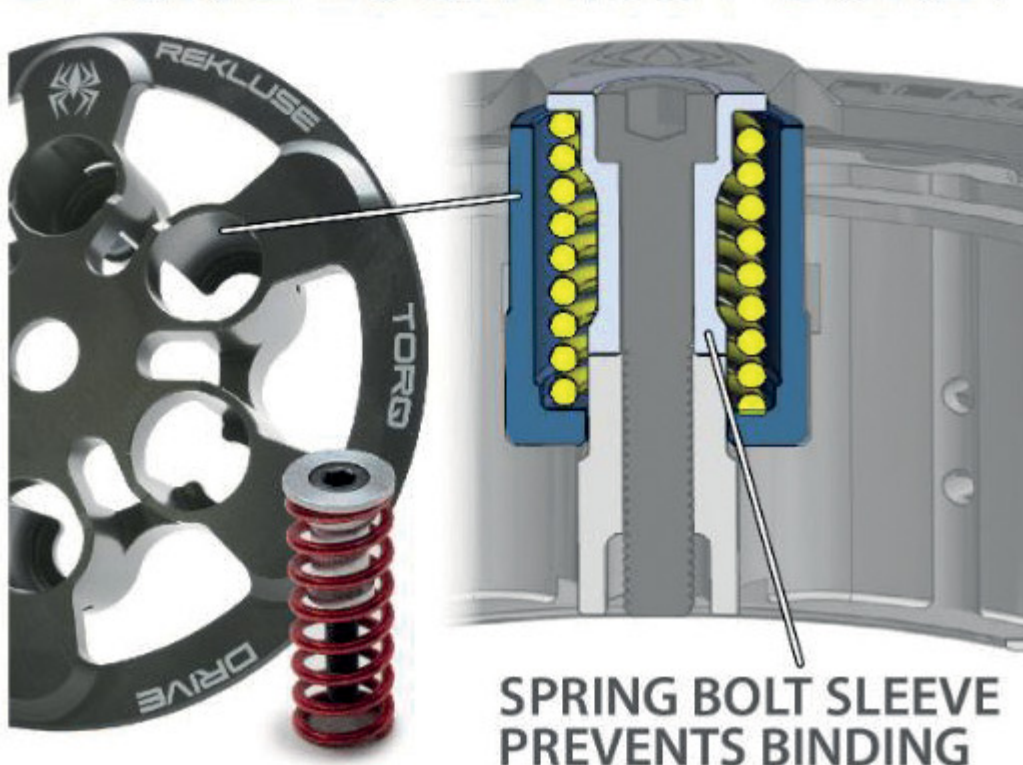
## HARD ANODIZED FOR ULTIMATE DURABILITY



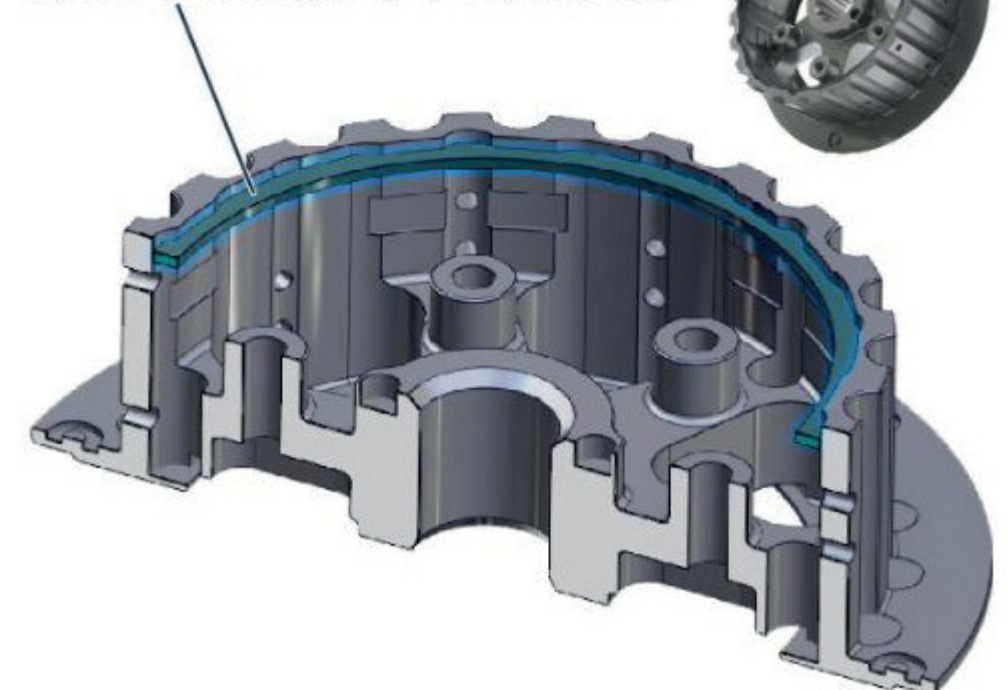
## ENGINEERED TO INCREASE OIL FLOW



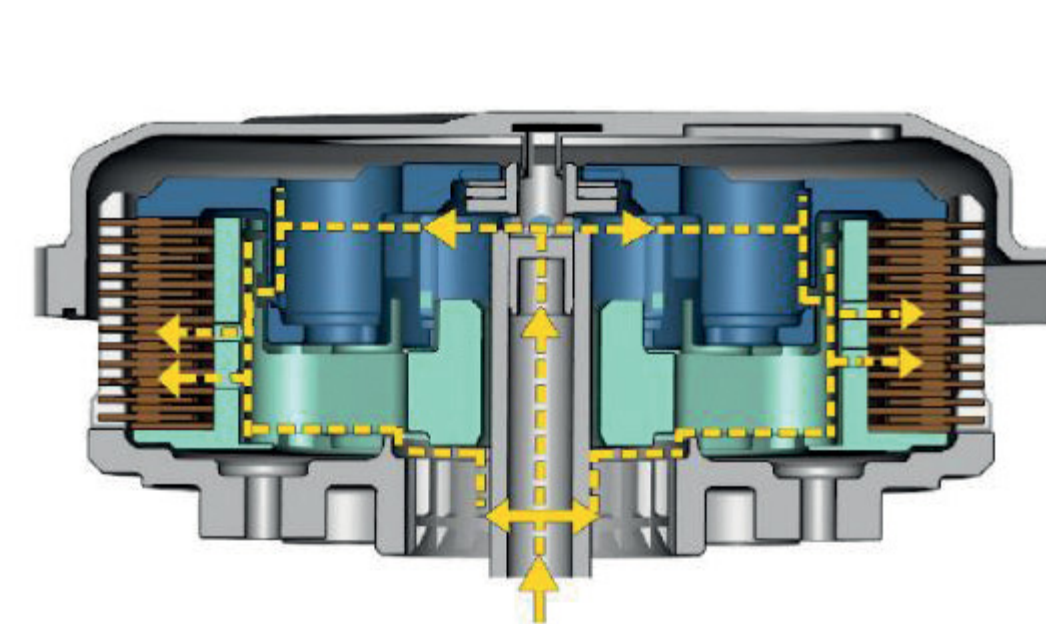
## SPRING LOCATING POCKET



## OIL DAM KEEPS OIL IN THE CLUTCH

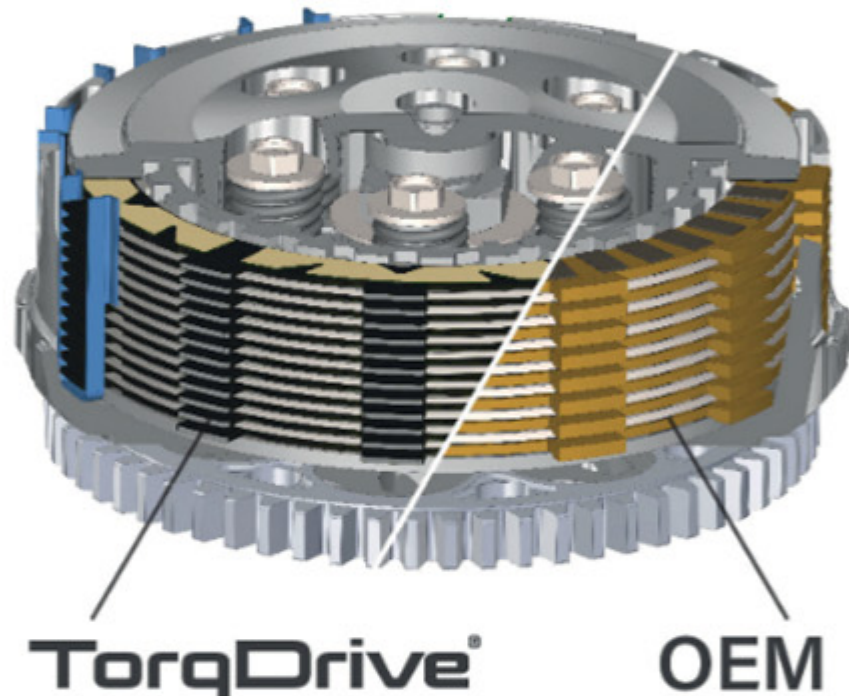


## DESIGNED TO OPTIMIZE OIL FLOW



# TorqDrive Technology

## MORE FRICTIONS = MORE TORQUE CAPACITY



**More Friction Disks = More Torque Capacity**  
TorqDrive technology features thin friction disks and protective basket sleeves. Developed over years of testing in professional racing, the thinner friction disks allow more disks to fit into the clutch, dramatically increasing performance and durability. Tuning options are expanded to maximize power transfer and reduce clutch lever pull effort. Riders feel improved acceleration, drive, and control.

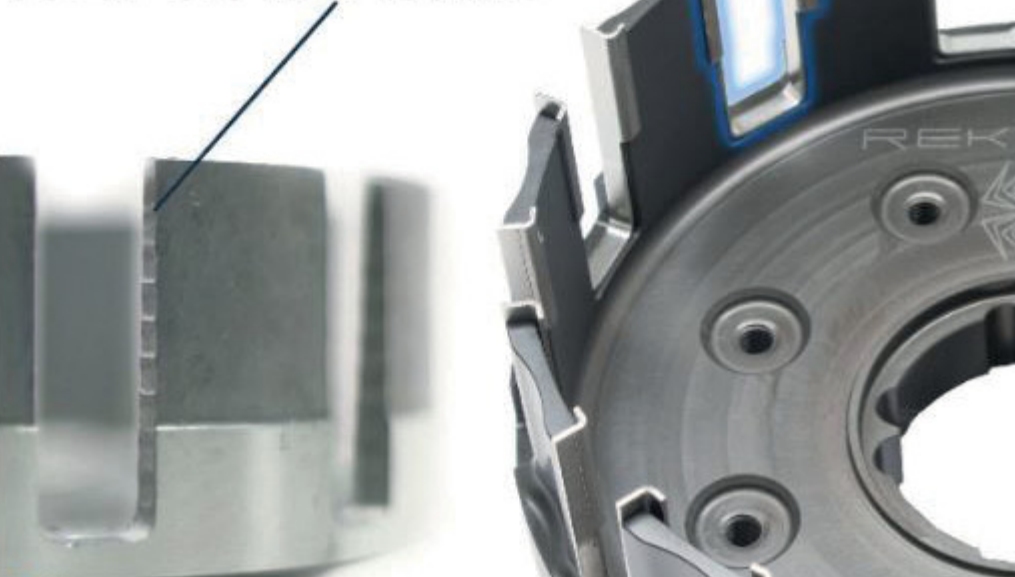
**Basket Sleeves Eliminate Notching**  
To protect and extend the life of the basket, TorqDrive includes steel lining sleeves to eliminate basket wear and notching.

**Friction Pad Design Aids Oil Flow and Reduces Drag**  
The result is clean disengagement at the lever, improved modulation, and improved clutch control. TorqDrive disks utilize a steel core, while OEM disks use aluminum. When heated, steel expands less than half the amount of aluminum. This means clutch fade is virtually eliminated.

**Friction Material Provides Superior Grip and Durability**  
Through years of research and testing, we have identified the best friction material for motorcycle applications considering functionality, grip and durability. This means our friction material can take more abuse than others before losing performance. We've seen up to 4 times the life compared to other clutches.

TorqDrive Technology is Found In:  
- RADIUSCX  
- RADIUSX (FOR DIRT BIKE AND ADVENTURE)  
- RADIUSX FOR V-TWIN (HARLEY-DAVIDSON AND INDIAN SCOUT)  
- TORQDRIVE CLUTCH PACK  
- CORE MANUAL TORQDRIVE  
- TORQDRIVE FOR V-TWIN (HARLEY-DAVIDSON AND INDIAN SCOUT)  
- TORQDRIVE FOR ADVENTURE  
- TORQDRIVE FOR YXZ1000

## BASKET SLEEVES EXTEND LIFE & PREVENT NOTCHING



## FRICTION PAD DESIGN ADDS OIL FLOW & REDUCES DRAG

