



**FITTING INSTRUCTIONS FOR CP0493 AERO CRASH PROTECTORS
FOR BMW S1000 XR 2020-**



PICTURE A



PICTURE B

THIS KIT CONTAINS THE ITEMS PICTURED AND LABELLED OVER PAGE.

SOME PARTS MAY BE SHOWN FOR CLARITY OF INSTRUCTIONS ONLY.

DO NOT PROCEED UNTIL YOU ARE SURE ALL PARTS ARE PRESENT.

PLEASE READ ALL INSTRUCTIONS BEFORE PROCEEDING.

**IF IN ANY DOUBT WHEN FITTING OUR PRODUCTS, CONSULT ONE OF
OUR DEALERS OR HAVE FITTED BY A QUALIFIED TECHNICIAN.**

PLEASE NOTE THAT THE WAY THE KIT IS PACKED DOES NOT NECESSARILY REPRESENT THE
WAY OF MOUNTING TO THE BIKE.

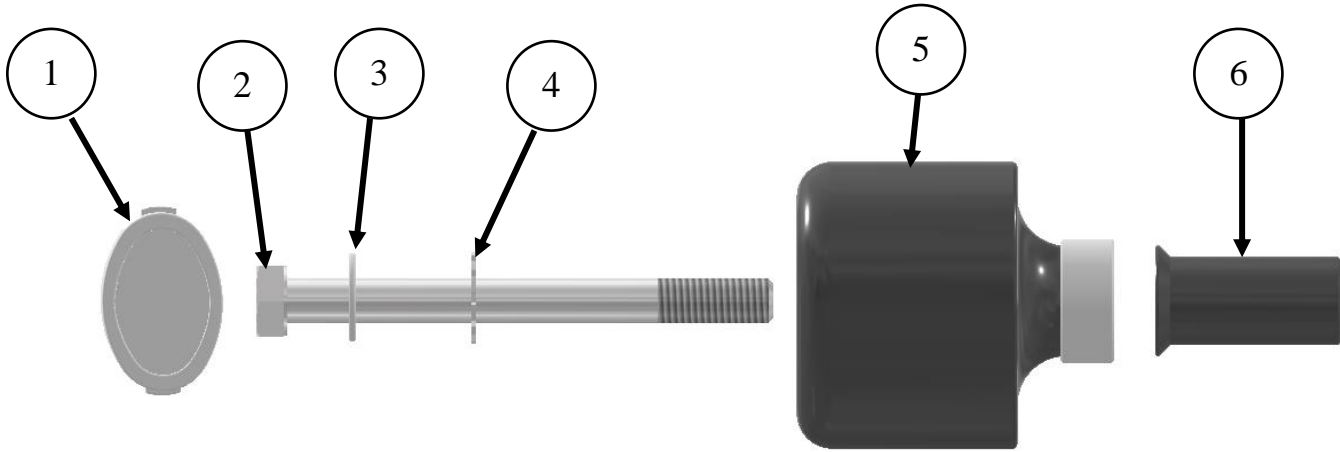
IN THE EVENT OF RUBBER WASHERS BEING USED TO HOLD COMPONENTS ONTO BOLTS,
THESE RUBBER WASHERS CAN BE THROWN AWAY.



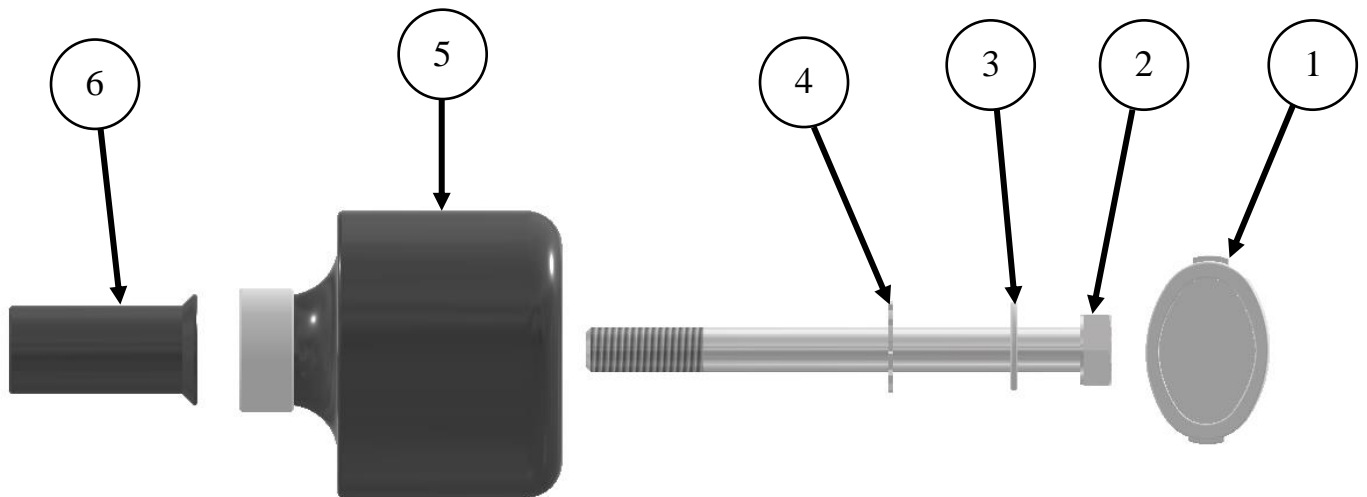
<u>TOOLS REQUIRED</u>	<u>GENERAL TORQUE SETTINGS</u>
<ul style="list-style-type: none"> • Socket set to include 17mm A/F socket and wrench. • Torque wrench (up-to 40Nm). 	<p>M4 BOLT = 8Nm M5 BOLT = 12Nm M6 BOLT = 15Nm M8 BOLT = 20Nm M10 BOLT = 40Nm M12 BOLT = 40Nm</p>

LEGEND

ITEM NO.	DESCRIPTION	QTY
ITEM 1	CRASH PROTECTOR CAPS (BC0002)	2
ITEM 2	M10 x 1.5 x 110mm LONG HEX HEAD BOLTS	2
ITEM 3	M10 WASHERS	2
ITEM 4	SHAKE PROOF WASHERS (LW0001)	2
ITEM 5	CRASH PROTECTORS (B0431 c/w CS341)	2
ITEM 6	CRASH PROTECTOR SPACERS 42mm LONG (S0902)	2



LEFT-HAND SIDE ASSEMBLY



RIGHT-HAND SIDE ASSEMBLY



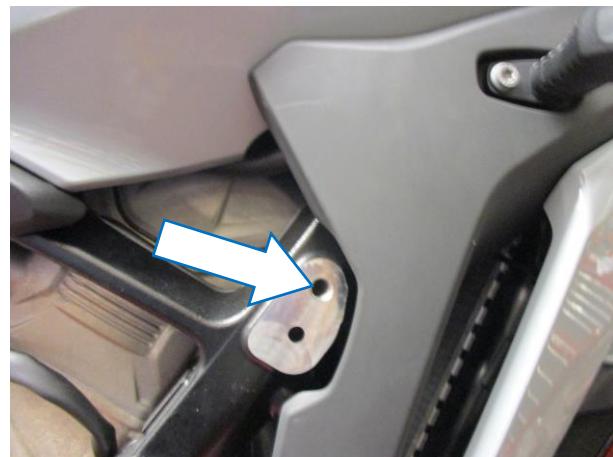
AERO STYLE CRASH PROTECTOR ORIENTATION



PICTURE C



PICTURE 1



PICTURE 2

FITTING INSTRUCTIONS

Near side (left side as you sit on the motorcycle)

- Place one of the M10 plane washers (**item 3**) onto one of the M10 hex bolts (**item 2**) followed by one of the shake proof washers (**item 4**) as shown in the **left-hand side assembly picture**.
- Place the bolt with washers into one of the crash protectors (**item 5**), then place one of the spacers (**item 6**) over the exposed end of the bolt as shown in the **left-hand side assembly picture**.
- Offer this assembly into position as arrowed in **picture 1** (please ensure no parts come in contact with any fairing panels). Finally tighten the crash protector bolt until you feel some compression from inside the protector using 17mm socket and wrench. **PLEASE NOTE THE CRASH PROTECTOR MUST BE POSITIONED AS IN PICTURE 'C' ON PAGE 4 WITH THE BIGGER END TOWARD FRONT OF BIKE.** Turn a little more so that you feel the compression increase slightly. Then apply a quarter turn. Tighten to 40Nm of torque (**do not exceed this figure, as damage can occur to the motorcycle and the bolt**).
- Fit the crash protector caps (**item 1**) as shown in **picture B**.
- Before riding please check both crash protectors are secure and will not rotate.
- Please check tightness of crash protectors regularly.

**Off side (right side as you sit on the motorcycle)**

- Place one of the M10 plane washers (**item 3**) onto one of the M10 hex bolts (**item 2**) followed by one of the shake proof washers (**item 4**) as shown in the **right-hand side assembly picture**.
- Place the bolt with washers into one of the crash protectors (**item 5**), then place one of the spacers (**item 6**) over the exposed end of the bolt as shown in the **right-hand side assembly picture**.
- Offer this assembly into position as arrowed in **picture 2** (please ensure no parts come in contact with any fairing panels). Finally tighten the crash protector bolt until you feel some compression from inside the protector using 17mm socket and wrench. **PLEASE NOTE THE CRASH PROTECTOR MUST BE POSITIONED AS IN PICTURE 'C' ON PAGE 4 WITH THE BIGGER END TOWARD FRONT OF BIKE.** Turn a little more so that you feel the compression increase slightly. Then apply a quarter turn. Tighten to 40Nm of torque (**do not exceed this figure, as damage can occur to the motorcycle and the bolt**).
- Fit the crash protector caps (**item 1**) as shown in **picture B**.
- Before riding please check both crash protectors are secure and will not rotate.
- Please check tightness of crash protectors regularly.