



**FITTING INSTRUCTIONS FOR AB0014BK ADVENTURE BARS**  
**KAWASAKI KLR 650 2002-2013**

1



PICTURE A



PICTURE B

**THIS KIT CONTAINS THE ITEMS PICTURED AND LABELLED BELOW.**  
**DO NOT PROCEED UNTIL YOU ARE SURE ALL PARTS ARE PRESENT.**

**Please note that the way the kit is packed does not necessarily represent the way of mounting to the bike**

THE PARTS SHOWN MAY BE REPRESENTATIVE ONLY (FOR CLARITY OF INSTRUCTIONS ONLY)

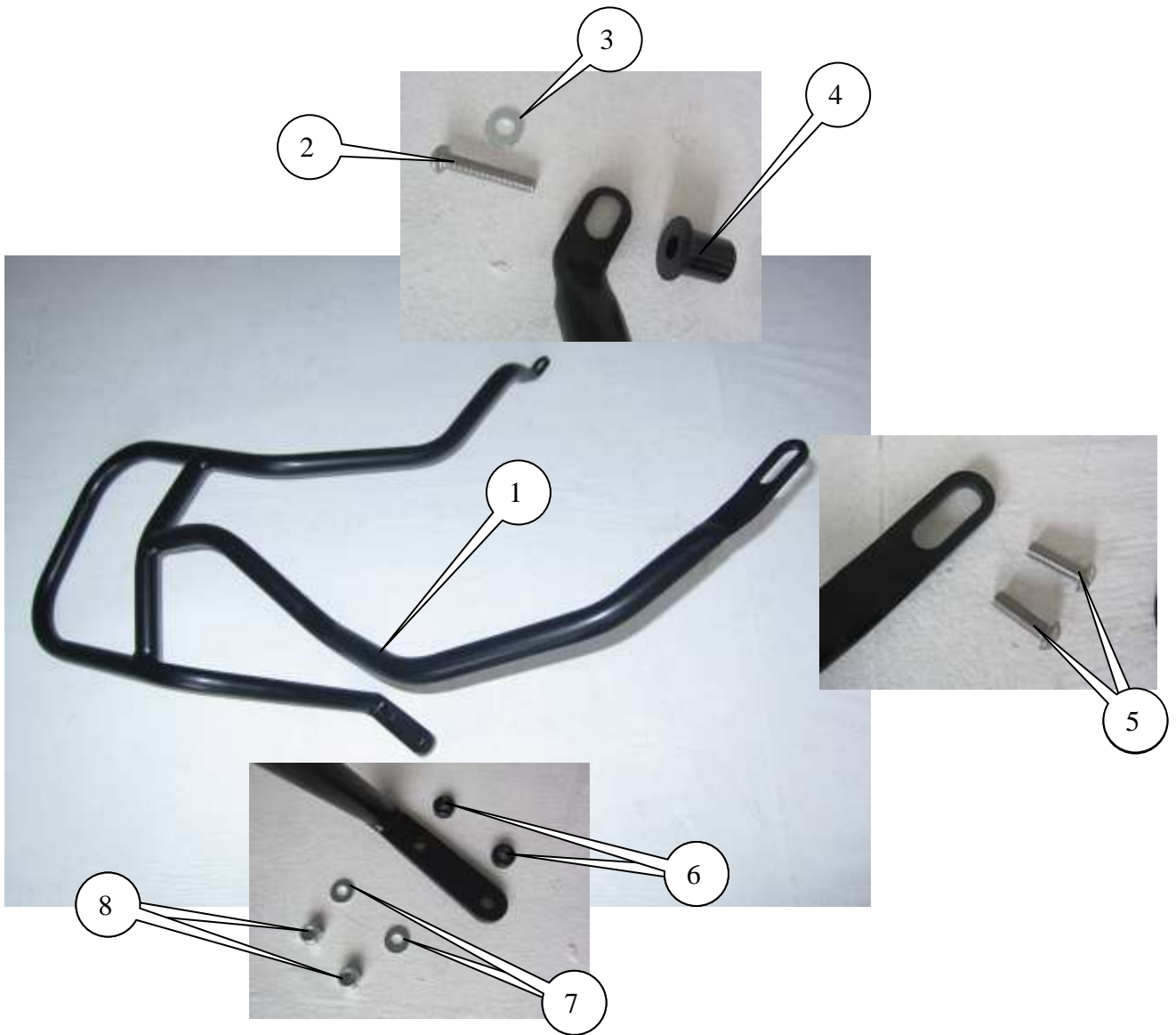
**GENERAL TORQUE SETTINGS**

- M4 BOLT = 8Nm
- M5 BOLT = 12Nm
- M6 BOLT = 15Nm
- M8 BOLT = 20Nm
- M10 BOLT = 40Nm



2

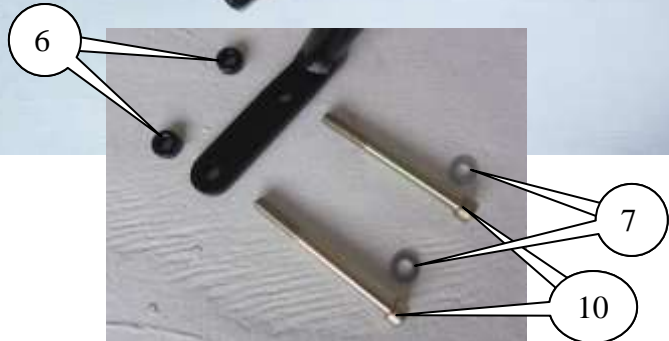
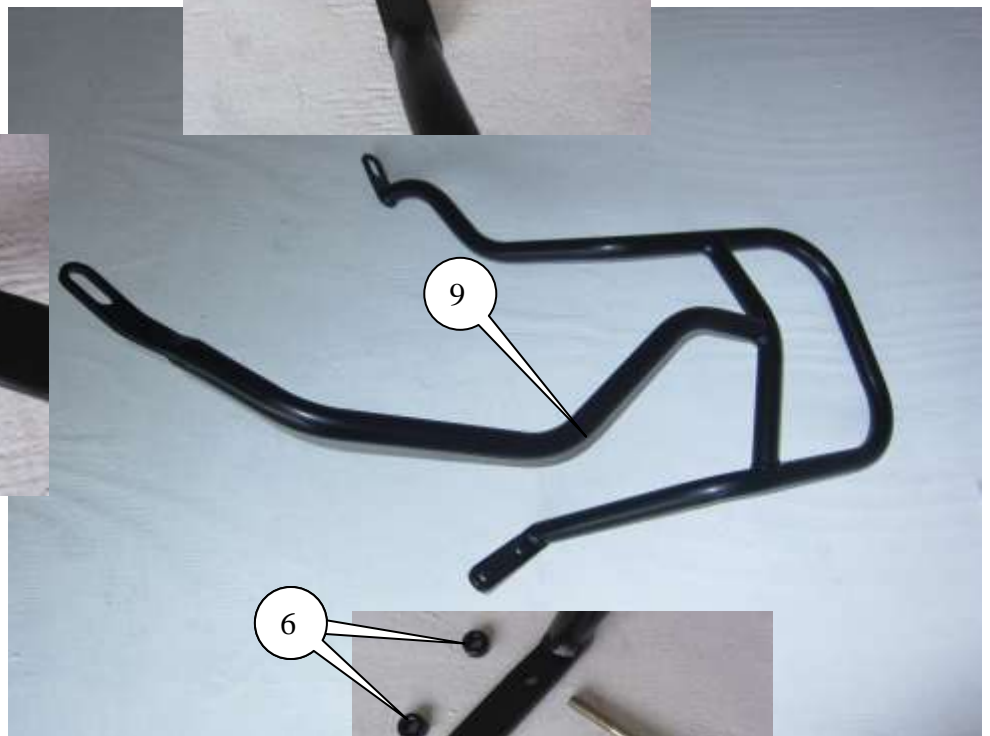
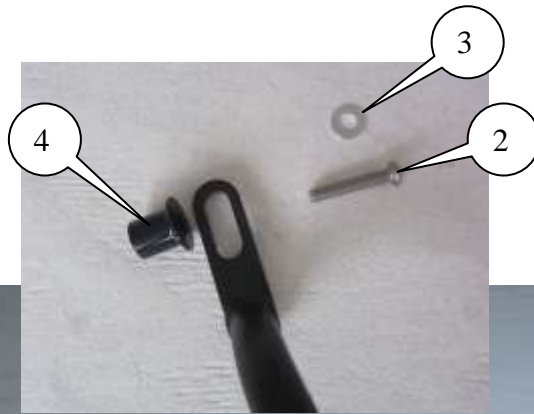
**LEFT HAND SIDE**





**RIGHT HAND SIDE**

3





### **LEGEND**

- ITEM 1 = ADVENTURE BAR LEFT-HAND SIDE (CB037) (x1).  
ITEM 2 = M10 x 1.25 x 60mm LONG BUTTON HEAD BOLT (R&LHS TOP) (x2).  
ITEM 3 = M10 WASHERS (x2).  
ITEM 4 = SPACERS (S0148=R&LHS TOP) (x2).  
ITEM 5 = M8 x 1.25 x 25mm LONG BUTTON HEAD BOLT (R&LHS BOTTOM) (x4).  
ITEM 6 = SPACERS (S0299=R&LHS BOTTOM) (x4).  
ITEM 7 = M8 WASHERS (x4).  
ITEM 8 = M8 x 1.25 NYLOC NUTS (FRONT BOTTOM) (x2).  
ITEM 9 = ADVENTURE BAR RIGHT-HAND SIDE (CB038) (x1).  
ITEM 10 = M8 x 1.25 x 100mm LONG CAP HEAD BOLT (FRONT BOTTOM) (x2).

### **TOOLS REQUIRED**

- Socket set to include a 8, 10, 12 & 13mm sockets and wrench.
  - Allen keys to include 5, 6 and 8mm A/F.
    - Phillips driver.
  - Torque wrench (up to 40Nm).



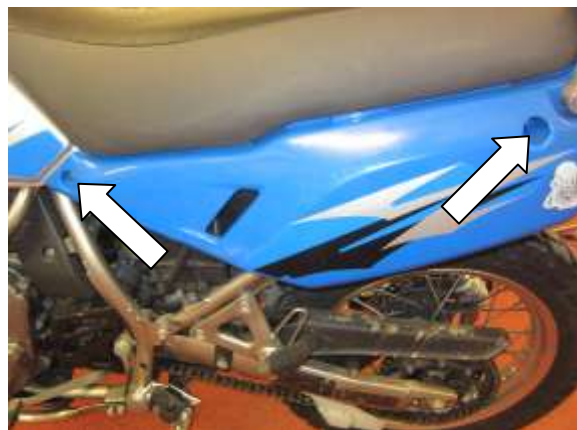
Picture 1



Picture 2



Picture 3



Picture 4



5



Picture 5



Picture 6



Picture 7



Picture 8



Picture 9



Picture 10



6



Picture 11



Picture 12



Picture 13



Picture 14



Picture 15



Picture 16



7



Picture 17



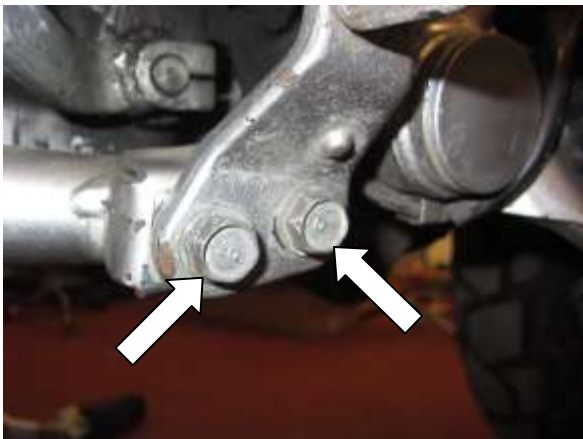
Picture 18



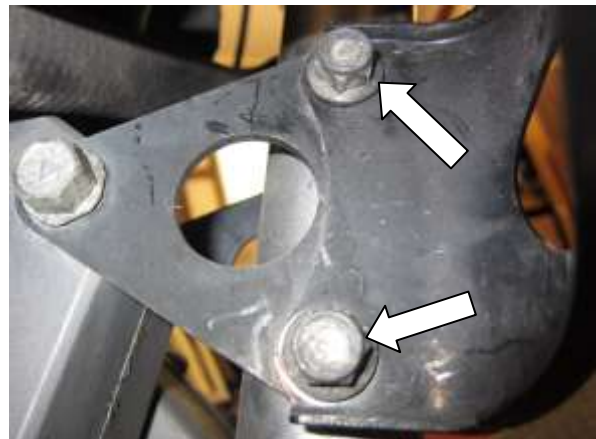
Picture 19



Picture 20



Picture 21



Picture 22



8



Picture 23



Picture 24



Picture 25



Picture 26



Picture 27



Picture 28





Picture 29



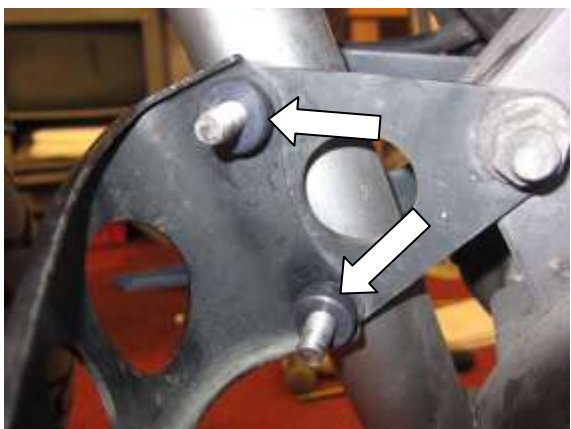
Picture 30



Picture 31



Picture 32



Picture 33



Picture 34



Picture 35



Picture 36



Picture 37



Picture 38

### **FITTING INSTRUCTIONS**

- Remove the two bolts arrowed in pictures 1 and 2 and remove the right hand side side panel.
- Remove the bolt arrowed in picture 3.
- Remove the two bolts arrowed in pictures 4 and remove the left hand side side panel.
- Remove the bolt arrowed in picture 5 and remove the seat.
- Remove the two bolts arrowed in picture 6.
- Remove the bolts arrowed in pictures 7, 8, 9 and 10 and remove the left hand side front fairing.
- Remove the bolts arrowed in pictures 11, 12, 13 and 14 and remove the right hand side front fairing.
- Gently lift the petrol tank and support with chocks of wood as shown in picture 15 to allow access to the bolts shown in pictures 23 and 29.
- Remove the bolts arrowed in pictures 16, 17, 18 and 19 and remove the bash plate.



- Remove the two bolts arrowed in picture 20 and remove the foot peg.
- Remove the two bolts arrowed in picture 21 and remove the foot peg.
- Remove the two nuts arrowed in picture 22 (do not remove the bolts at this stage).
- Remove the bolt arrowed in picture 23 on the right hand side.
- Place two of the smaller spacers (item 6) over the original bolts as arrowed in picture 24.
- Place one of the larger spacers (item 4) into the frame recess as arrowed in picture 25.
- Offer the right hand side adventure bar (item 9) into position shown in picture B.
- Place one of the M10 washers (item 3) onto one of the M10 button headed bolts (item 2) and place into the top slot of the adventure bar as shown in picture 25 (do not tighten at this stage).
- Ensure the front mounting plate is positioned onto the original bolts as shown in picture 27.
- Place two of the M8 washers (item 7) onto the two longer cap head bolts (item 10) and use them to push out the original front mounting bolts.
- Ensure the lower mounting bracket is aligned as shown in picture 26.
- Place two of the shorter M8 bolts (item 5) through the original foot pegs and through the lower mounting bracket as shown in picture 28 and tighten the upper and lower bolts.
- Remove the bolt arrowed in picture 29 on the left hand side.
- Place two of the smaller spacers (item 6) over the new bolts as arrowed in picture 33.
- Place one of the larger spacers (item 4) into the frame recess as arrowed in picture 30.
- Offer the left hand side adventure bar (item 1) into position shown in picture A.
- Place one of the M10 washers (item 3) onto one of the M10 button headed bolts (item 2) and place into the top slot of the adventure bar as shown in picture 30 (do not tighten at this stage).
- Ensure the front mounting plate is positioned onto the new bolts as shown in picture 32.
- Place two of the M8 washers (item 7) and M8 Nyloc nuts (item 8) onto the new bolts fitted from the right hand side and tighten.
- Ensure the lower mounting bracket is aligned as shown in picture 31.
- Place two of the shorter M8 bolts (item 5) through the original foot pegs and through the lower mounting bracket as shown in picture 34 and tighten the upper and lower bolts.
- Tighten the two front mounting bracket nuts.
- Gently lower the petrol tank and refit and tighten the two bolts as arrowed in picture 6.
- Cover both adventure bars with towels/cloths to prevent marking of the side panels when refitting as shown in pictures 35, 36, 37 and 38.
- Carefully refit both side panels as original.
- Carefully refit the bash plate as original.