



**PYLE**<sup>®</sup>

**User's Manual**

**PLMCA51BT**

**1400 WATTS**



**Motorcycle/ATV/Snowmobile Mount  
2CH Amplifier w/Dual handle-bar Mount Chrome  
Plated Weatherproof Speakers w/MP3/iPod Input**

**CYCLE SERIES**

Congratulations on your purchase of this **PYLE®** Cycle Series premier amplified speaker system. Like all **PYLE®** products, this motorcycle system has been thoroughly tested to ensure consistent, reliable performance under some rigorous conditions. Our systems were designed to withstand water, moisture, heat and direct sun exposure. We pride ourselves in customer satisfaction. If you should have any questions regarding the installation and/or operation of your **PYLE®** Cycle Series motorcycle speaker system, which is not covered in this manual, please contact your **PYLE®** Dealer or **PYLE®** Technical Support

## **PLMCA51BT**

1400 Watts Motorcycle/ATV/Snowmobile Mount 2CH  
**Amplifier w/Dual handle-bar Mount Chrome Plated  
Weatherproof Speakers w/MP3/Ipod Input**

- **700 Watts x 2 Channels Micro Amplifier with wire harness**
- 3" Dual Chrome Plated Plastic Cabinet Speaker with Supreme high temperature Voice Coil
- Pair of Chrome Handlebar Clamps
- Chrome Stainless Universal handlebar audio mount
- 12 Volt T-TAP Plug for direct connection on American made Motorcycles
- Easy Chrome Stainless Mounting Brackets and Accessories included Environment resistance and water proof Bluetooth and in-line volume control console with 3.5mm Stereo Input Jack, Easy Connection to the Output of Other Audio Devices Like i-Phone, i-Pad, i-Pod, Cell Phone and MP3 etc
- Bluetooth 3.0 technology  
Bluetooth auto connected while power on  
Bluetooth auto disconnected while Aux-in (3.5mm connector)  
Bluetooth console Dimension : 3.15" L x 2.09"(W) x 0.83"(H)  
Easy and quick installed handle-bar mount bracket is included
- Speaker Dimensions : 4.49"L x 3.27"W x 3.27"H
- **Amplifier Dimensions : 2"L x 3.25"W x 1.25"H**
- Sold as : Kit

# Accessories

Upon un-packing your new Pyle Cycle Series audio system, Please check to ensure you have all the included parts

<p><b>#1</b></p> 	<p>(1) Pair of 700 Watt stereo chrome speaker enclosures with speaker wires</p>
<p><b>#2</b></p> 	<p>(3) "P" shape clamp Handlebar 2pcs for Speaker Enclosure / 1pc for Bluetooth control box</p>
<p><b>#3</b></p> 	<p>(3) "Z" shape bracket Handlebar, 2pcs for Speaker Enclosure / 1pc for Bluetooth control box</p>
<p><b>#4</b></p> 	<p>(1) Micro stereo 2CH Amplifier (700 Watts x 2 Max output power )</p>
<p><b>#5</b></p> 	<p>(1) Amplifier 12 Volt (-) Ground Blue Spade Terminal</p>
<p><b>#6</b></p> 	<p>(1) Amplifier 12 Volt (+) Blue Male Terminal Connector</p>
<p><b>#7</b></p> 	<p>(1) Universal 12 Volt Wire Harness Connection</p>
<p><b>#8</b></p> 	<p>(1) 12 Volt Direct Plug, for Compatible Motorcycles</p>
<p><b>#9</b></p> 	<p>(1) Bluetooth Controller</p>
<p><b>#10</b></p> 	<p>(6) Black Wire Tie Lockable Straps</p>
<p><b>#11</b></p> 	<p>(4) Screws for Speaker</p>
<p><b>#12</b></p> 	<p>(3) Screws, Washer and Nut 2pcs for Amplifier / 1pc for Bluetooth control box</p>

# Installation Instructions:



**STEP 1:** Install "P" shaped clamp (item#2) / "Z" shaped Bracket (item#3) threaded on to the bottom of each speaker enclosure(item#1). Use the provided bolts (item#11).

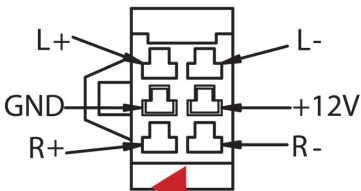
**STEP 2:** Bolt each speaker with its mount to the handlebar of the vehicle. Hardware included will allow for mounting on to 1" diameter and smaller handlebars. Project each speaker at desired listening level, for best performance.

**STEP 3:** Secure speaker wires either through handlebars for a custom look, or use (item#10) wire ties to secure to the handlebars.



**STEP 4:** Bolt the Bluetooth controller (item#9) to the handlebars using the vehicle provided hardware. (shown in page 4)

The Connector that comes pre-installed on the amplifier wire harness (item#7) was designed to allow for direct plug-in for most American Motorcycles (item#8). If mounting on a metric or universal vehicle, this harness will not be used, and replaced with the terminals / connectors provided in the enclosed parts bag according to the installation instructions (item#5, #6,#7). Follow wire instructions as shown in Diagram A be sure to match the proper polarity for all connections. the polarity for the speaker terminals solid color wire (+) , wire with stripe (-). Blue wire 12 Volt positive (+) terminal trigger wire. Black wire 12 Volt (-) Ground to chassis of vehicle.



**A**

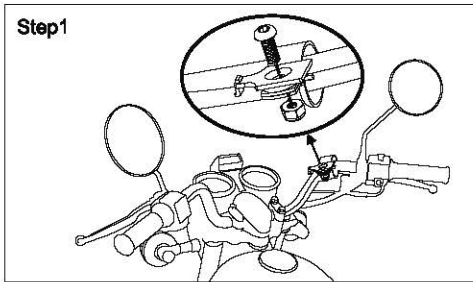


**STEP 5:** Run wires up to neck area of motorcycle and plug into harness. Use (item#10), wire ties to the frame.

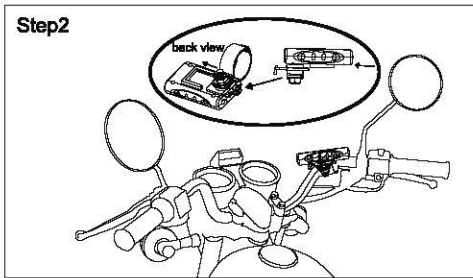
**STEP 6:** Bolt amplifier on motorcycle with provided Bolt (item#12). Best if mounted directly to frame out of reach from direct heat or crash bar.

**STEP 7:** Connect 3.5mm male connection into Audio device, and opposite side into Micro Amplifier

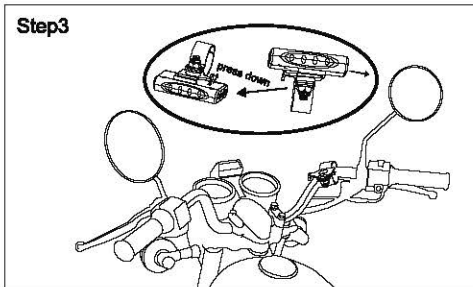
# Bluetooth Installation



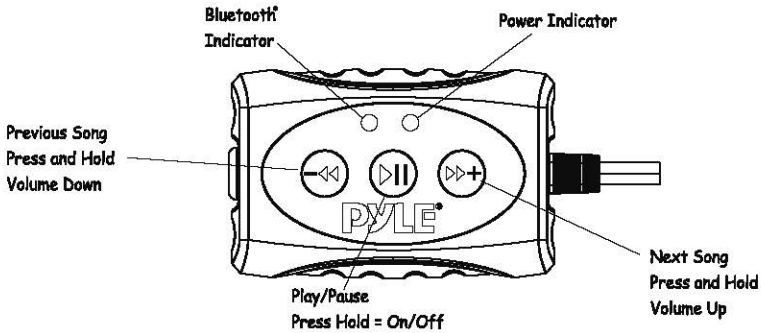
1. Install "P" shaped clamp (item#2) or "Z" shaped bracket ( item#3) threaded on to the Bluetooth controller hook.(packed with Bluetooth controller). Use the provided **bolt (item#12)** to **fix on the handlebar**. it can be adjusted the tightness by provided EVA & rubber pad.



2. Slide the Bluetooth controller into the hook.



3. Press down the Bluetooth controller hook and then slide out the Bluetooth controller box at the same time to remove the Bluetooth controller.



## Bluetooth Pairing and Connection:

1. Connect Bluetooth controller box to your device
2. Press and Hold >|| for three seconds until power indicator lights (red)
3. The system will automatically go into pairing mode  
The power indicator will turn red for about 7 seconds and then alternating red and blue (Bluetooth blue Power red)  
Please be sure that Bluetooth is turned on your device Select Pyle Audio on your device to connect Bluetooth controller (if the **Bluetooth controller is connected the light will turn blue and not flash**)
4. When the device is out of Bluetooth range, Bluetooth will be disconnected automatically and automatically reconnect when detected in range again. (If not please just repeat steps 1 and 2)
5. When Bluetooth is disconnected or the 3.5mm AUX Input is plugged in, the power indicator will glow red.

## Playing Music:

1. Press >|| to start or pause the music
2. Press >>+ shortly for next track, Press and hold for Volume up
3. Press -<< shortly for previous track, Press and hold for Volume down