

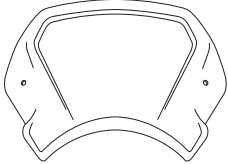












DUCATI SCRAMBLER DESERT SLED / SCRAMBLER 1100 / SCRAMBLER 1100 SPECIAL

M O U N T I N G I N S T R U C T I O N S

REF 9800

ALUMINUM FRONT PLATE



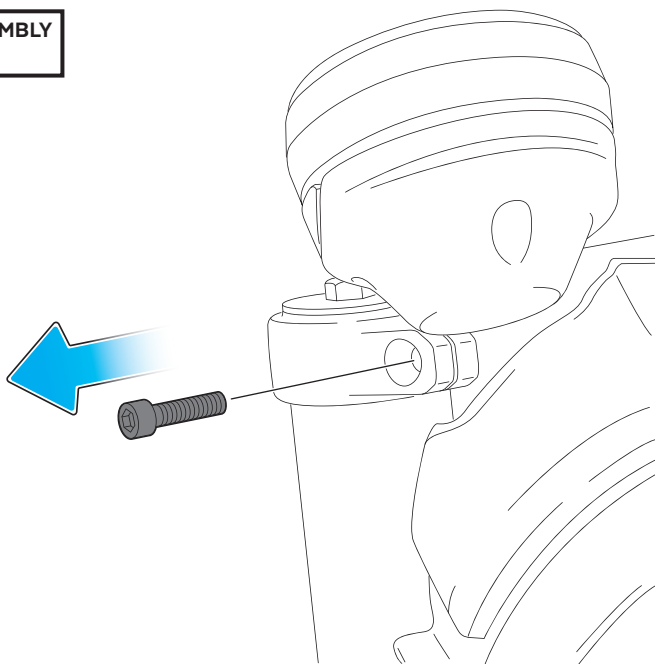
ID	PART	DESCRIPTION	QTY	REF
1		Front plate	1	9807P/N
2		right metal support (R)	1	SOPOR-2P-2-9800
3		left metal support (L)	1	SOPOR-2P-2-9800
4		Ø8x2mm silicone tear (supplied already mounted on item 1)	4	ADHESI-GT-D8---
5		Ø12,5x4mm silicone tear	1	TOPE-PA12,7X3,5
6		Ø8,5 x Ø13 x 15 arrowhead	2	CASQUI-M----614
7		M8x40 DIN912 Allen screw	2	TORNI-AD912-475
8		M5 silentblock	2	SILENBTM5-046/1
9		M5x1 Nylon washer	2	ARNV00000000245
10		M5 ISO 7380 Screw cap	2	TAPON-----85
11		M5x16 Ø11 ISO 7380 Allen screw INOX	2	TORNI-IA----423
12		3,6x142 black cable tie	1	BRIDAN142X3'6-N
13		Trim lenght: 190mm ,6,2 x 2,6mm *ONLY FOR ALUMINUM FRONT PLATE (REF:9807)	1	PERFIL-PVC-1048

DUCATI SCRAMBLER DESERT SLED / SCRAMBLER 1100 / SCRAMBLER 1100 SPECIAL

MOUNTING INSTRUCTIONS

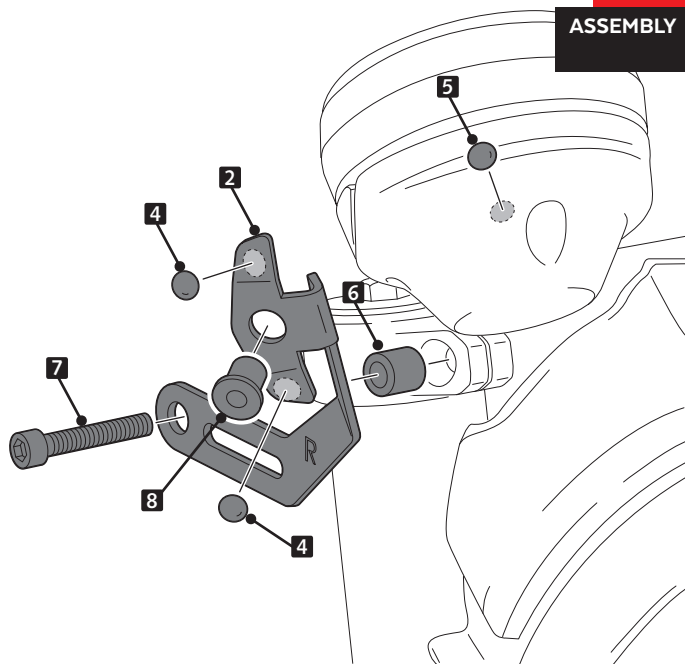
1

DISASSEMBLY



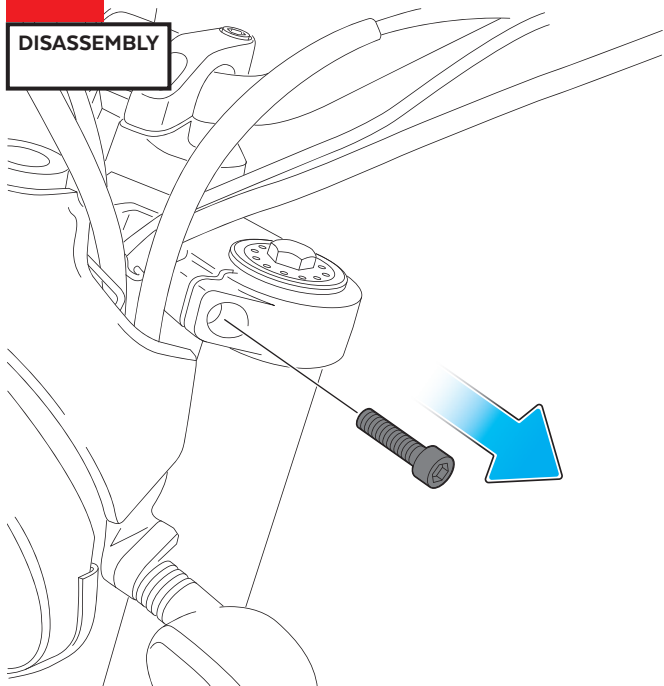
2

ASSEMBLY



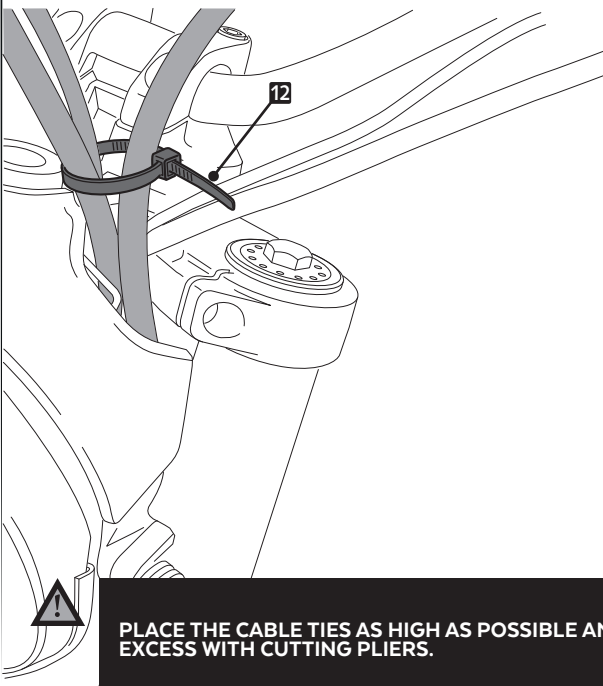
3

DISASSEMBLY



4

ASSEMBLY



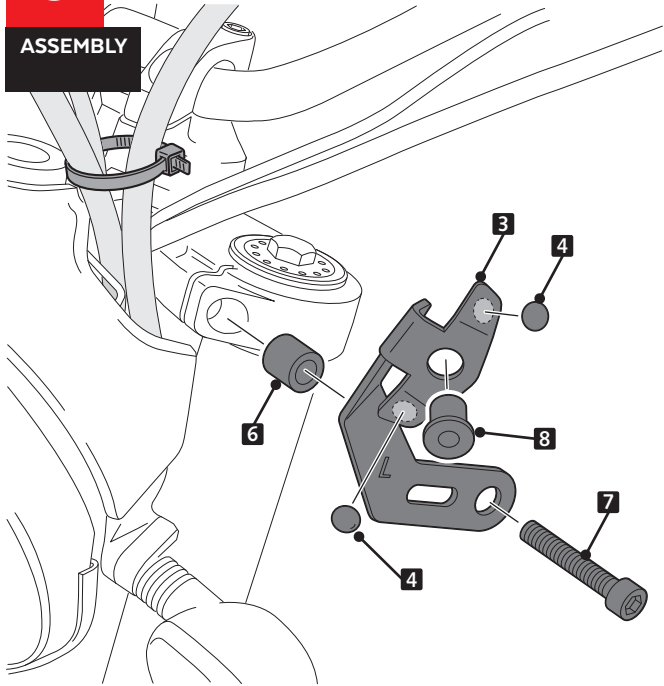
PLACE THE CABLE TIES AS HIGH AS POSSIBLE AND CUT THE EXCESS WITH CUTTING PLIERS.

DUCATI SCRAMBLER DESERT SLED /
SCRAMBLER 1100 / SCRAMBLER 1100 SPECIAL

MOUNTING INSTRUCTIONS

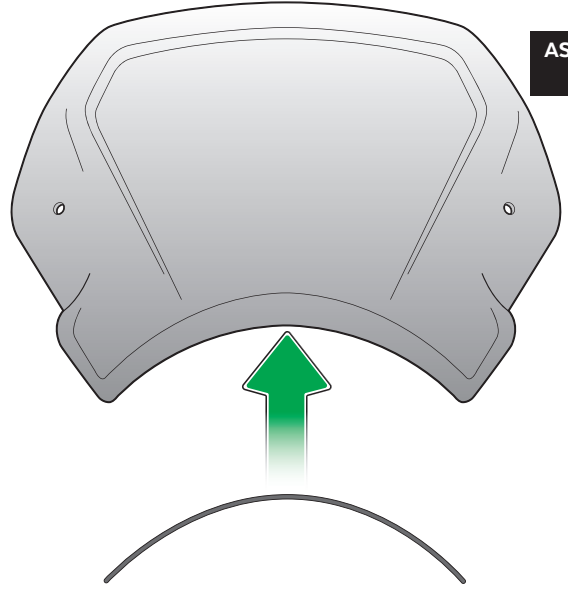
5

ASSEMBLY



6

ASSEMBLY



PLACE TRIM BEFORE MOUNTING THE FRONTAL PLATE.

7

ASSEMBLY

