

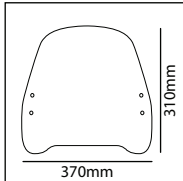


PREVENTION

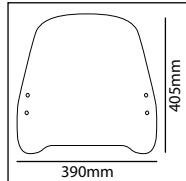
- Use water and neutral soap to clean the windshield.
- Check the tightening of the fasteners periodically.
- Park the scooter facing the sun, avoiding the sun-reflection effect that may damage some parts.
- Park if possible on even surfaces.

Thanks for your attention.

MOD. TRAFIC



MOD. URBAN



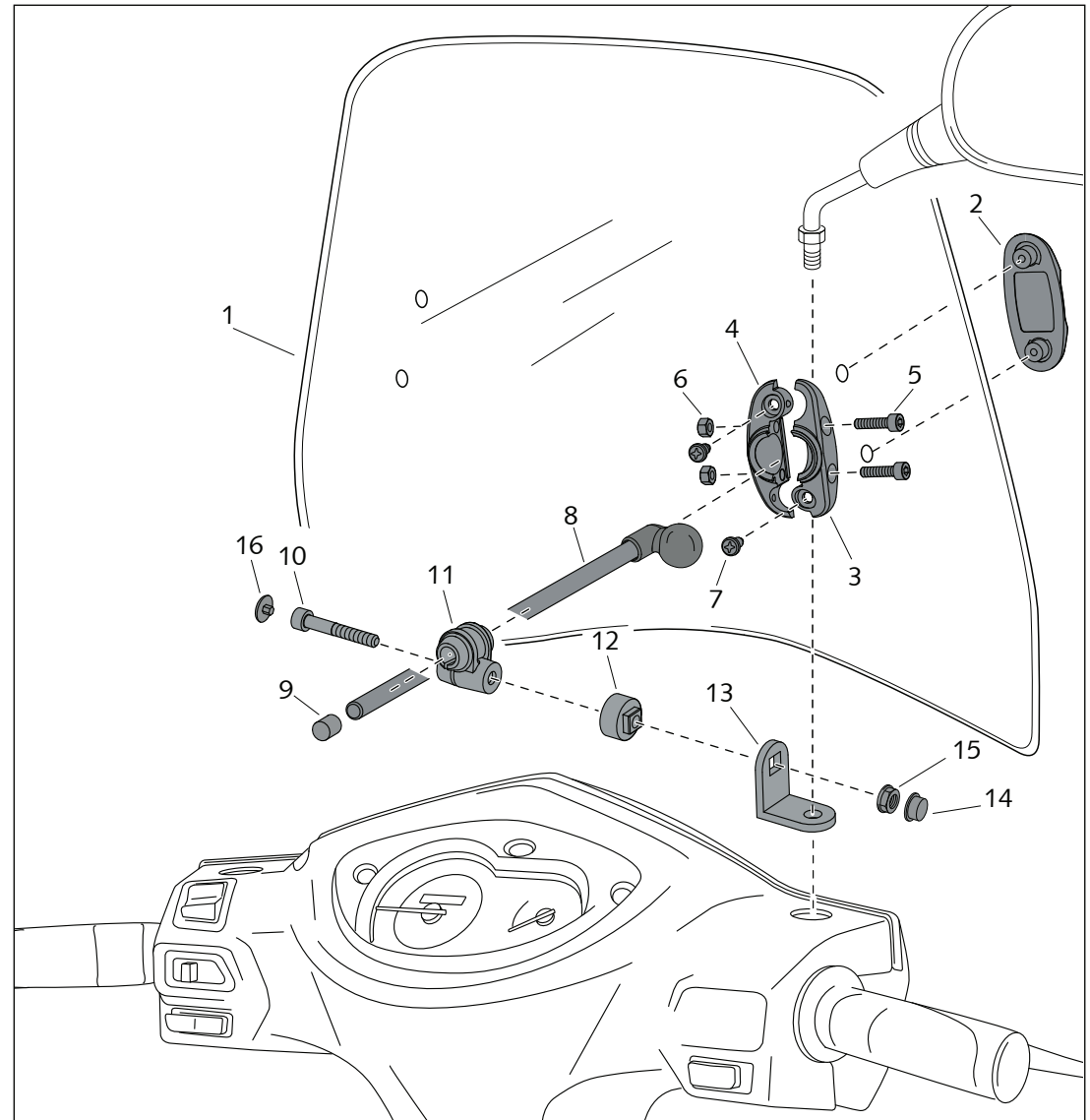
| ID. | DESCRIPTION | QTY. |
|-----|-------------------------------------|------|
| 1 | Windshield | 1 |
| 2 | Exterior cap | 2 |
| 3 | Ball bearing exterior support | 2 |
| 4 | Ball bearing interior support | 2 |
| 5 | M5x20 DIN912 allen screw | 4 |
| 6 | M5 DIN982 lock nut | 4 |
| 7 | M5x13 phillips screw | 4 |
| 8 | Rod with ball bearing to 90° Ø9x140 | 2 |
| 9 | Final bar cap | 2 |
| 10 | M8x40D912 screw | 2 |
| 11 | Rod guide support | 2 |
| 12 | Coupling angle | 2 |
| 13 | Angle Ref.:582 | 2 |
| 14 | M8 nut cover | 2 |
| 15 | M8 DIN6923 nut | 2 |
| 16 | M8 DIN912 screw cap | 2 |

WINDSHIELD ADAPTABLE TO

SYM MASK

Mod.: TRAFIC
Ref.: 9792

Mod.: URBAN
Ref.: 9793





Shop for quality Puig products on our website.

Buy quality motorcycle windshields & fairings in our online store.