

# HONDA CB1000R NEO SPORTS CAFÉ '18-

REF 9746

ENGINE SPOILER



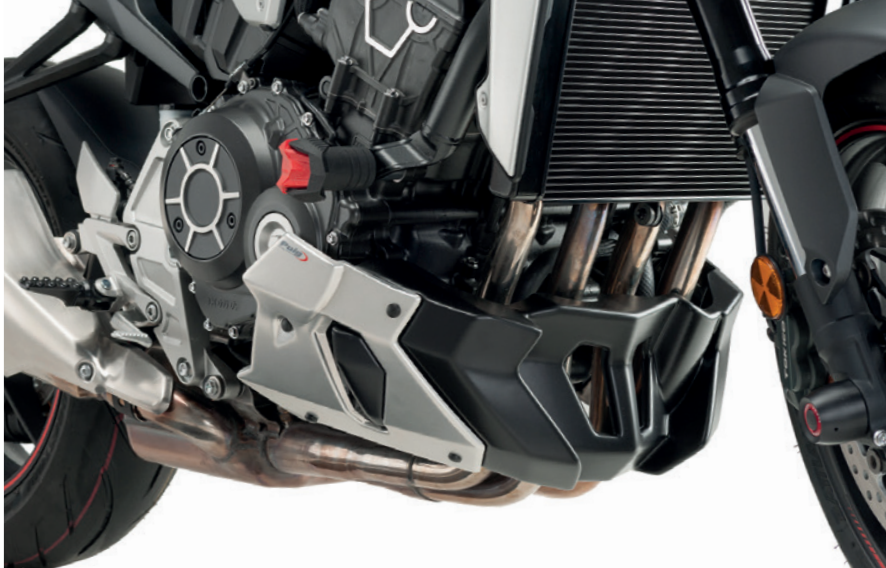
1 Person



30 min



EASY

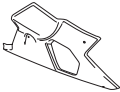
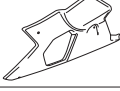
















N° 8



ALLEN

N° 3  
N° 4

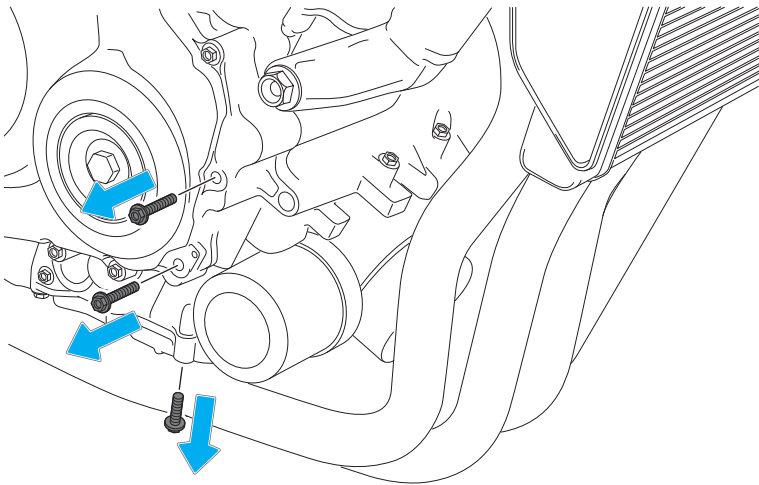
ID	PART	DESCRIPTION	QTY	REF
1		Right engine spoiler	1	SOPEMB2P-8-9746
2		Left engine spoiler	1	SOPEMB2P-8-9746
3		Central engine spoiler	1	9746J/CM3
4		Upper left support (L1)	1	SOPOR-4P-5-9746
5		Lower left support (L2)	1	SOPOR-4P-5-9746
6		Upper right support (R1)	1	SOPOR-4P-5-9746
7		Lower right support (R2)	1	SOPOR-4P-5-9746
8		Lock nut M5 (supplied mounted)	2	TUERCAJFM5-0373
9		M5 silentblock	4	SILENBTM5-046/1
10		M5x11 Ø11 ISO 7380 Allen Screw	4	TORNI-AI----520
11		Ø4,5 x Ø11 x 2mm rubber washer	4	ARAND-EPDM--722
12		M5x16 Ø11 ISO 7380 Allen Screw	6	TORNI-I7380-493
13		M5x1 Nylon washer	8	ARNV00000000245
14		M5 ISO 7380 screw cap	8	TAPON-----85
15		Ø12x Ø6 x 9 silentblock	2	AROPASACABLES-1
16		Ø12 x Ø6.8 x 7,3 Bush with flange	2	CASQUI-1A--750

# HONDA CB1000R NEO SPORTS CAFÉ '18-

## MOUNTING INSTRUCTIONS

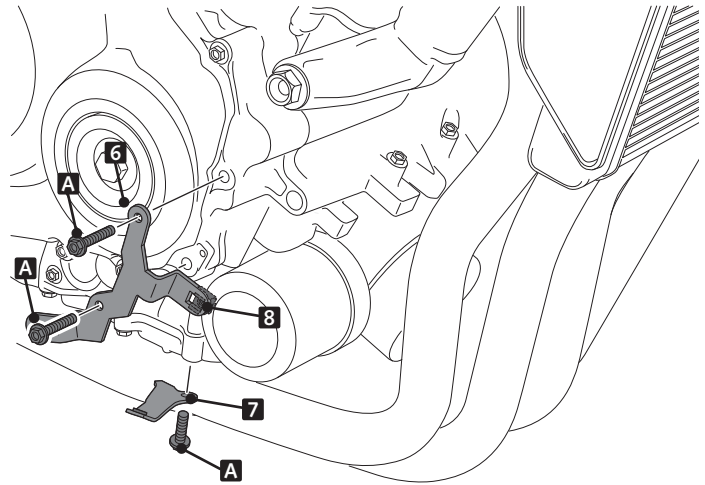
**1**

DISASSEMBLY



**2**

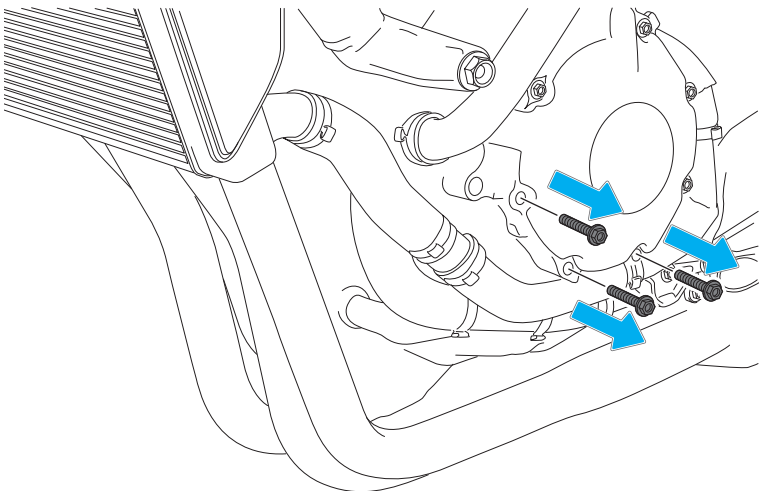
ASSEMBLY



**A** ORIGINAL SCREW

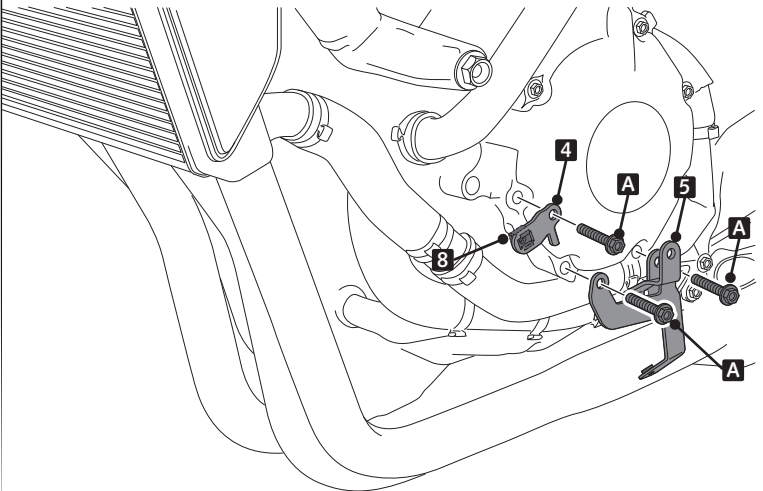
**3**

DISASSEMBLY



**4**

ASSEMBLY



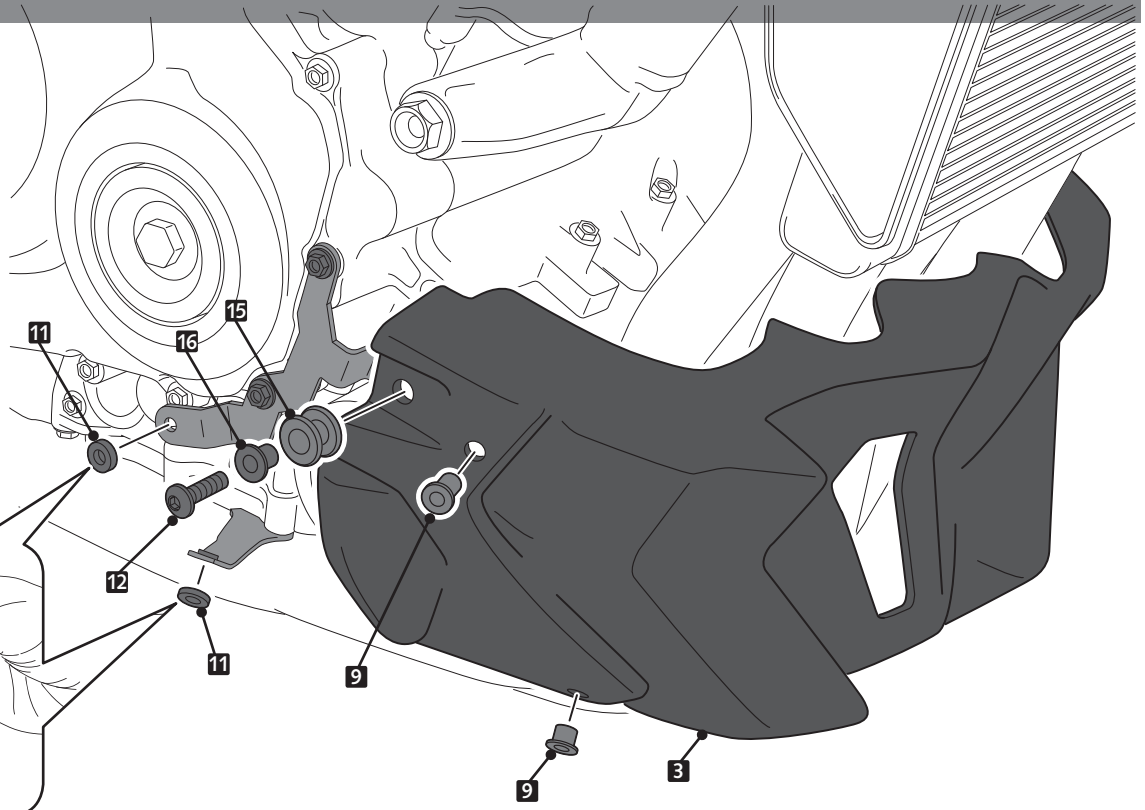
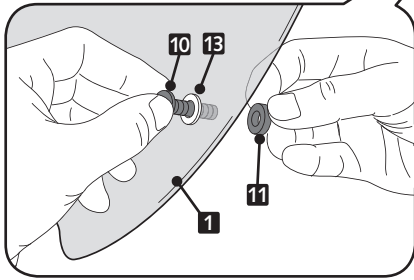
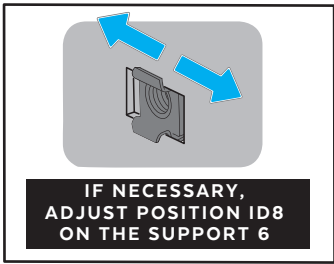
**A** ORIGINAL SCREW

# HONDA CB1000R NEO SPORTS CAFÉ '18-

## MOUNTING INSTRUCTIONS

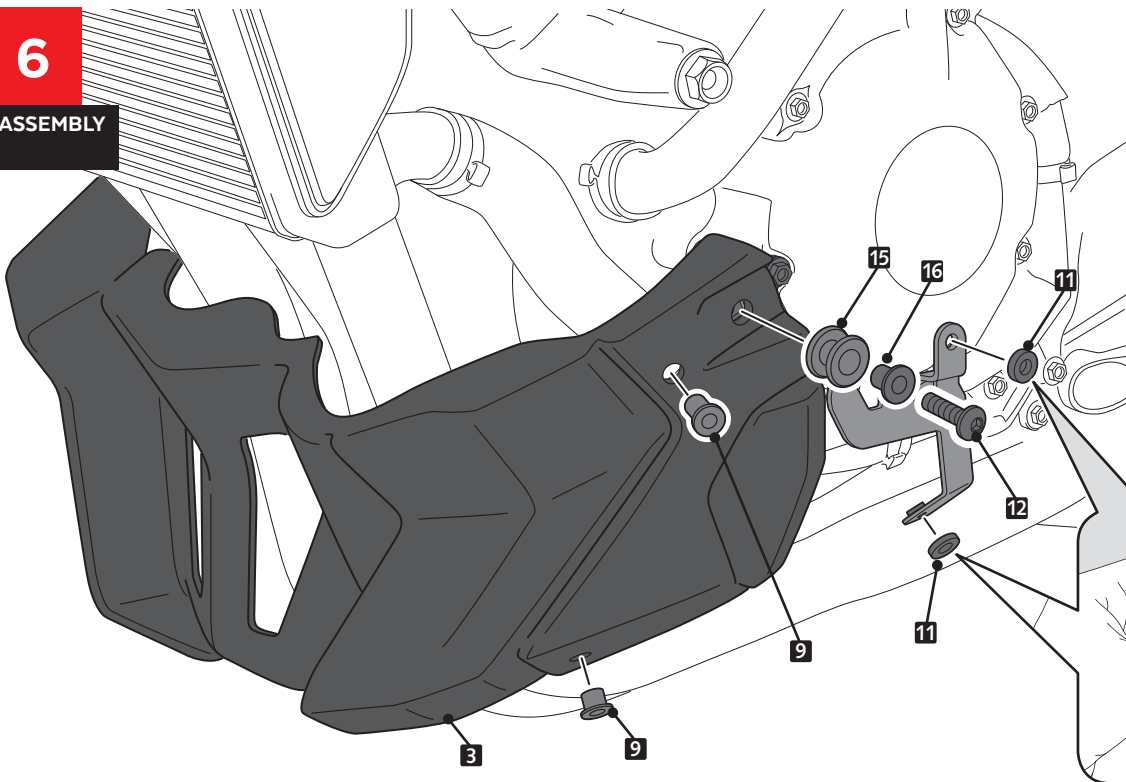
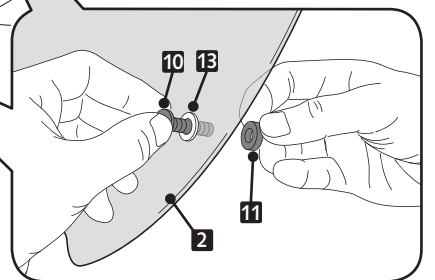
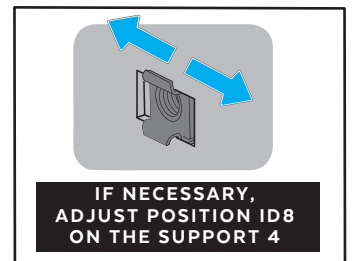
**5**

ASSEMBLY



**6**

ASSEMBLY

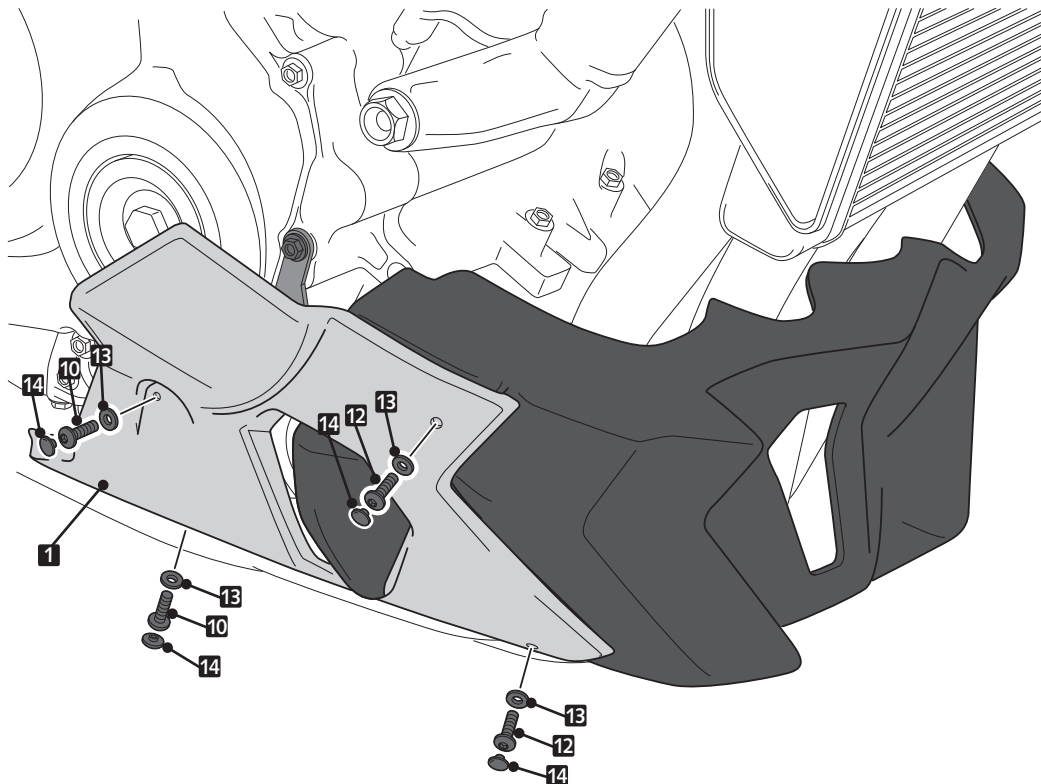


# HONDA CB1000R NEO SPORTS CAFÉ '18-

## MOUNTING INSTRUCTIONS

7

ASSEMBLY



8

ASSEMBLY

