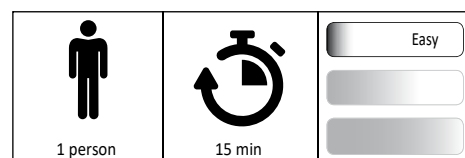
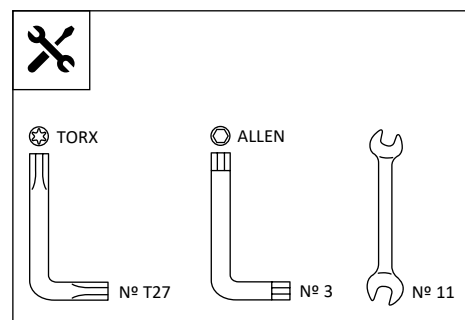
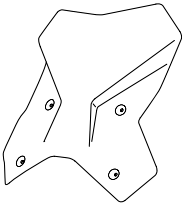



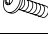
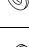



TOURING SCREEN FOR KTM 1290 SUPER ADVENTURE R-S '17-

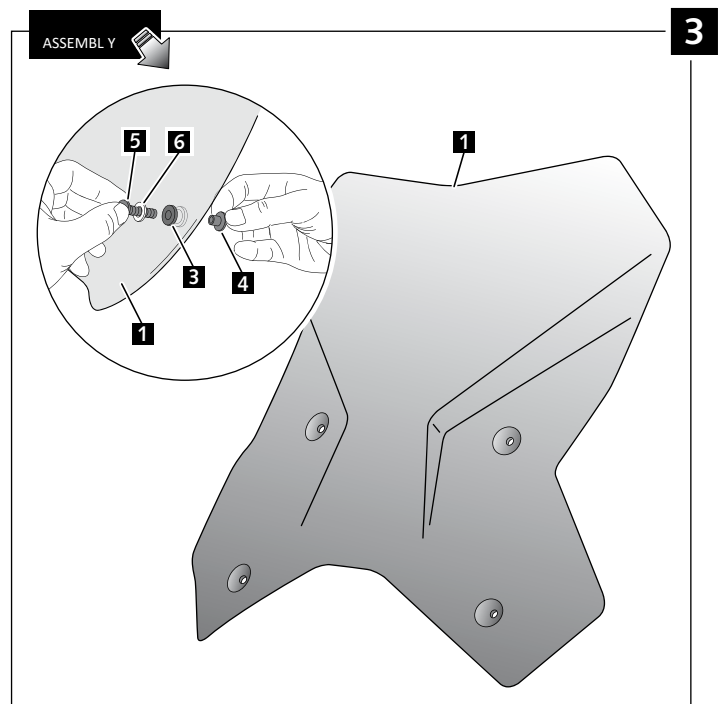
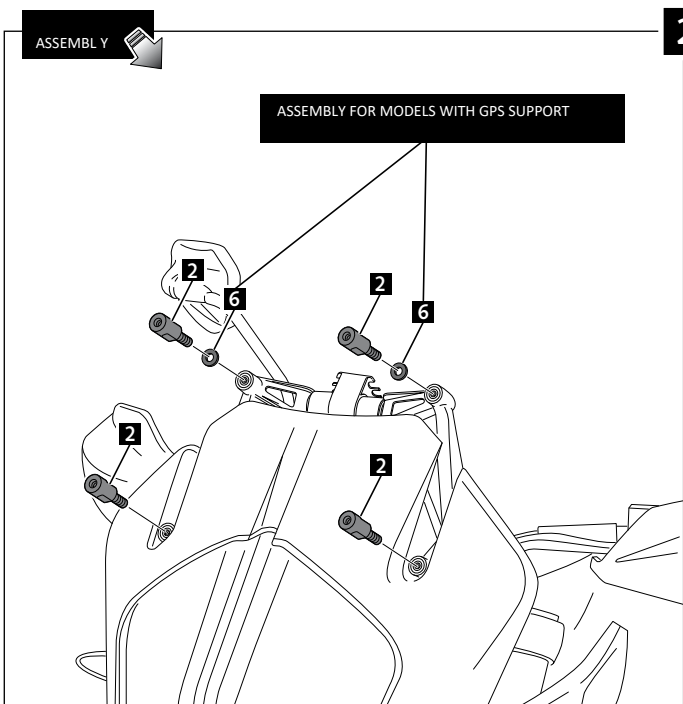
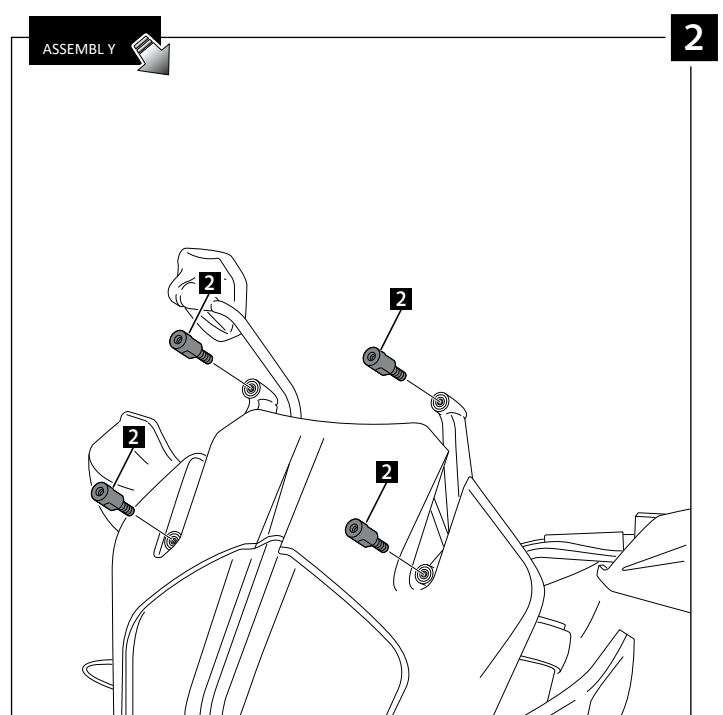
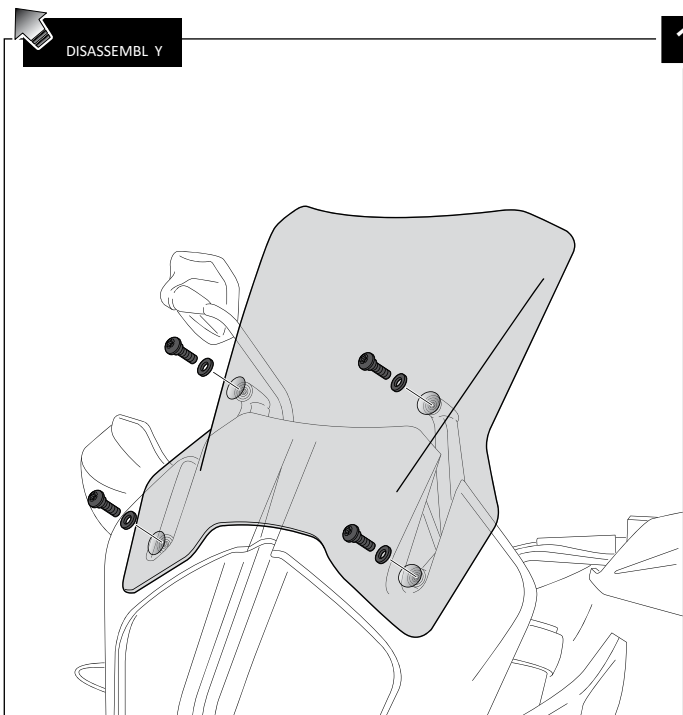
Ref.: 9717



ID	PART	DESCRIPTION	QTY	REF.
1		Touring screen	1	9717F/H/WM3
2		M5x11 special screw Hexag. lenght 15 (int M5x10)	4	TORNI-EM5---781
3		∅18x ∅9 x∅11 x7,5 silentblock	4	SILENB GONE--064
4		∅15x ∅9 x7,5 bush with flange	4	CASQUI-1A ---324
5		M5x16 ∅11 ISO 7380 screw	4	TORNI-I7380-493
6		Metal washer M6 DIN 9021 (∅6,4x∅18x1,6)	6	ARANDPD9021-037
7		M5 ISO 7380 screw cap	4	TAPON-----85

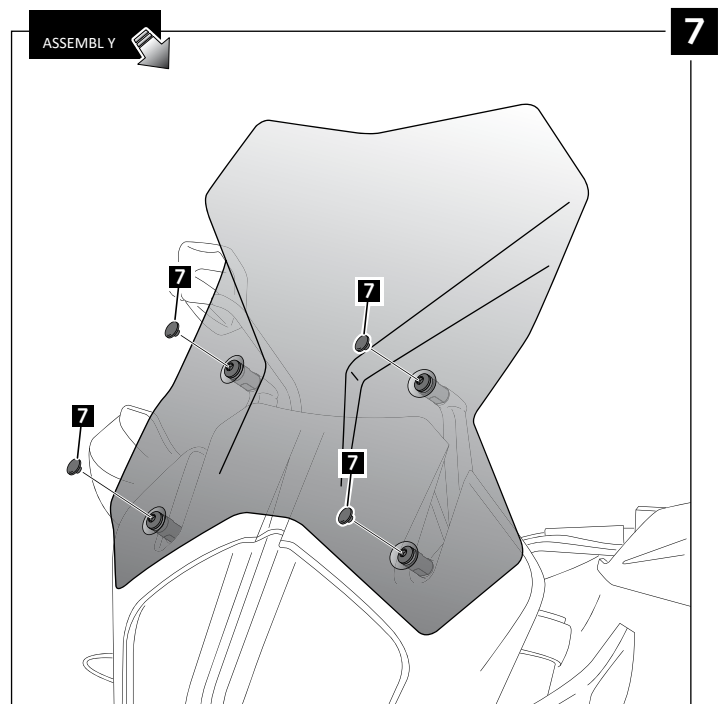
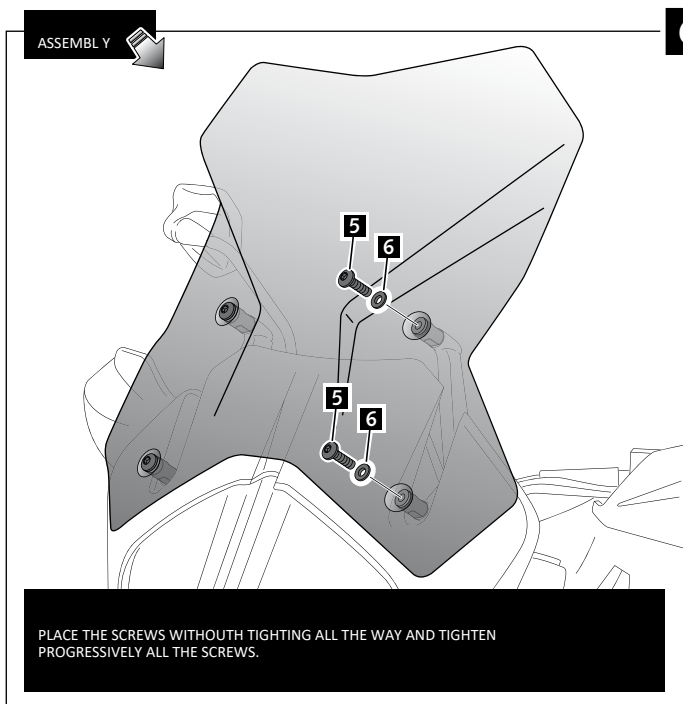
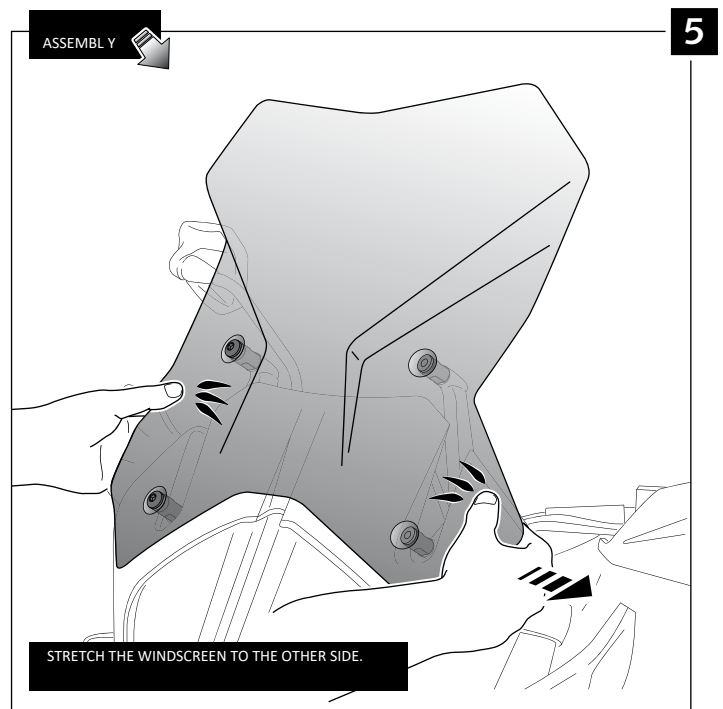
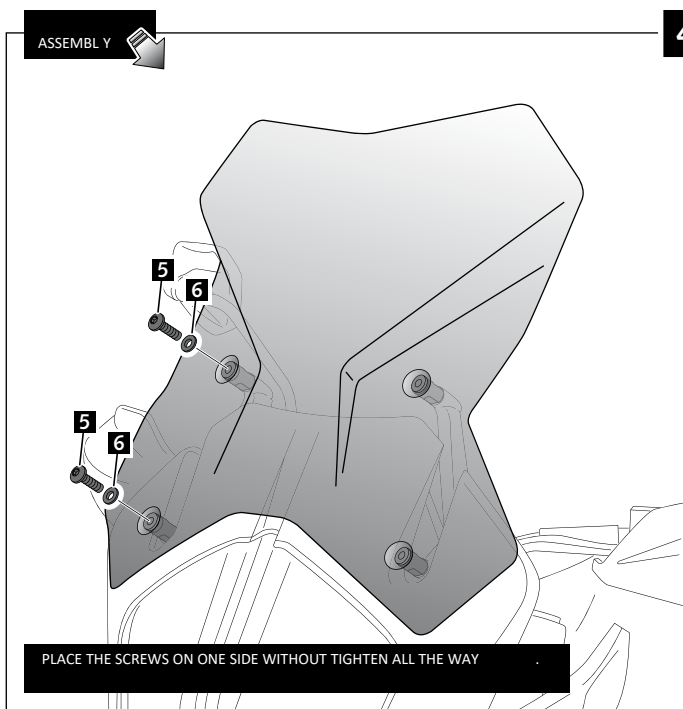
TOURING SCREEN FOR KTM 1290 SUPER ADVENTURER-S '17-

MOUNTING INSTRUCTIONS



TOURING SCREEN FOR KTM 1290 SUPER ADVENTURER-S '17-

MOUNTING INSTRUCTIONS



MULTI-ADJUSTABLE VISOR



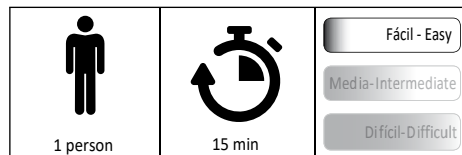
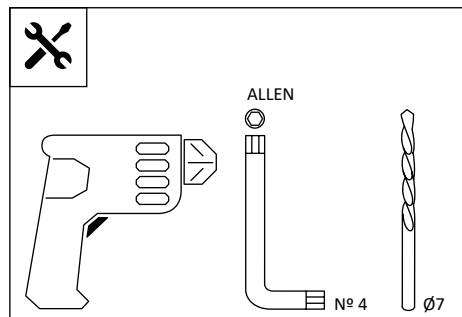
Ref.: 6007

Ref.: 5852

Ref.: 5853

Smoke

Clear



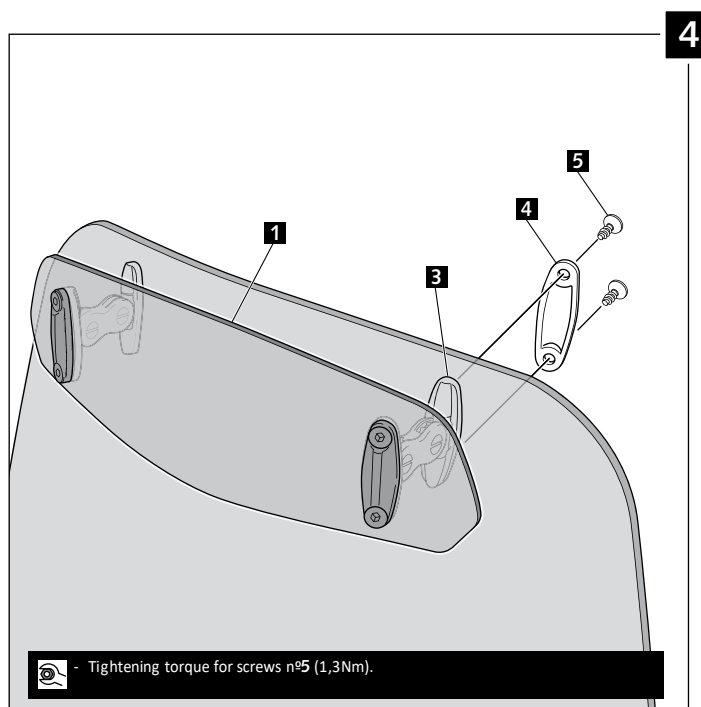
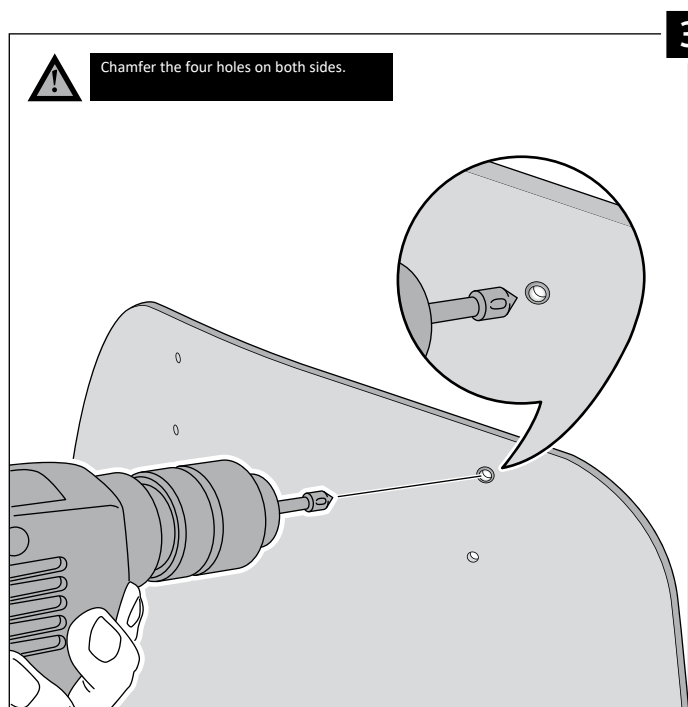
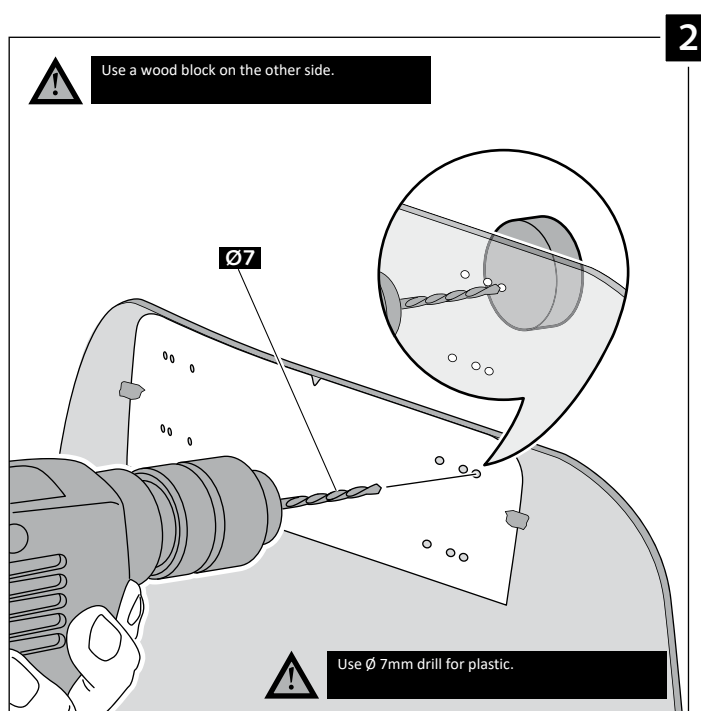
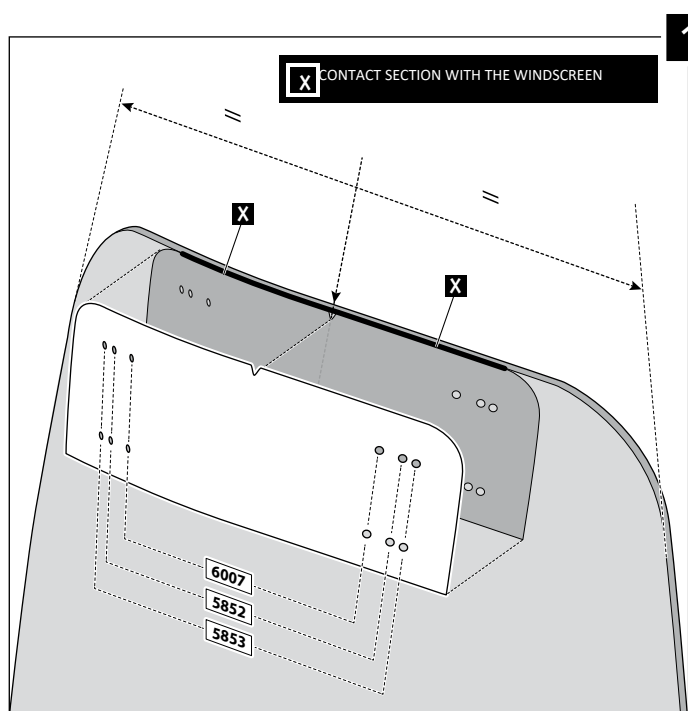
Note:
If the visor is supplied along with the windscreen, the windscreen will come factory-drilled so no drilling is necessary.

ID.	PART	DESCRIPTION	QTY.
1		Visor	1
2		Template	1
3		Multi-adjustable mechanism	2
4		Cap	4
5		Plastic thread fastener M6x12	8

MULTI-ADJUSTABLE VISOR

MOUNTING INSTRUCTIONS

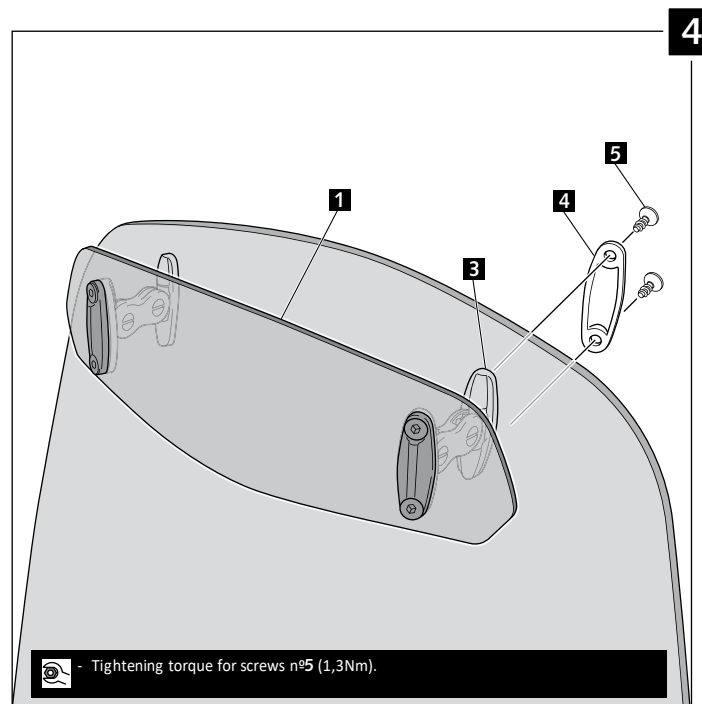
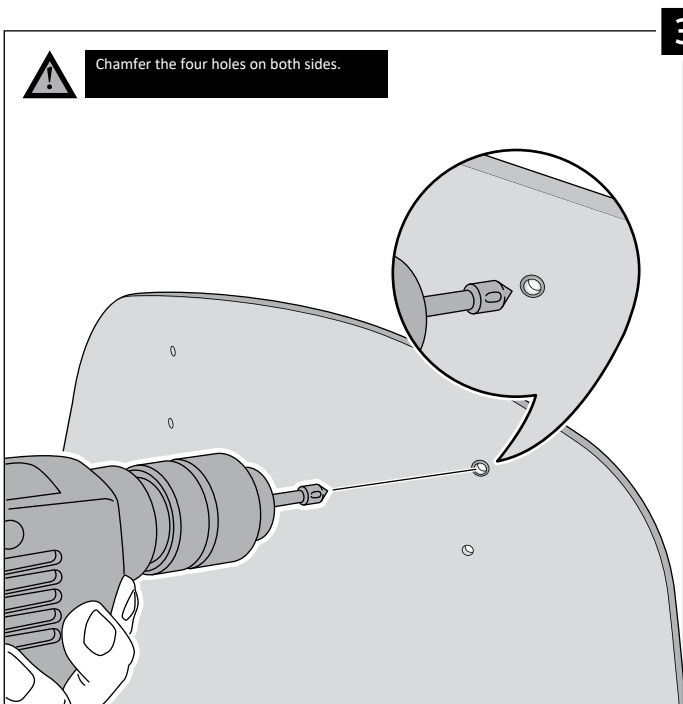
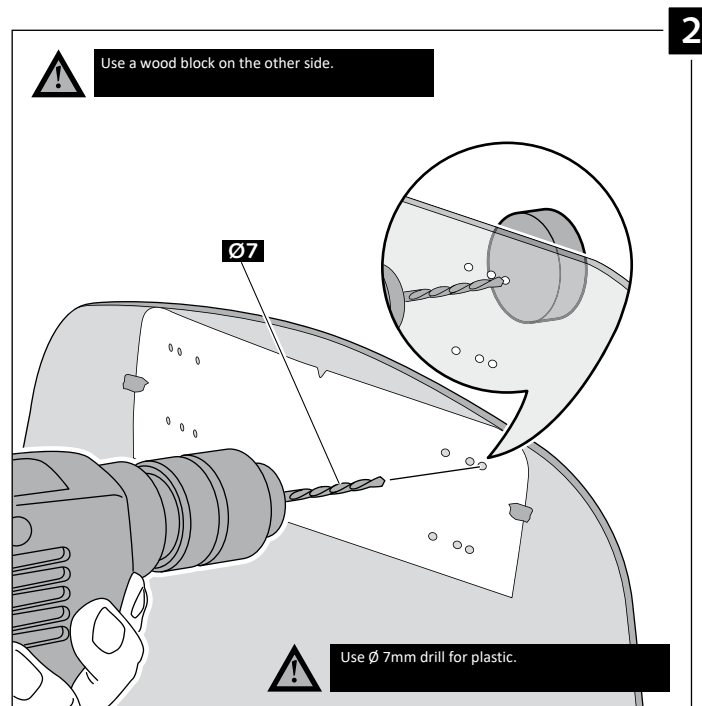
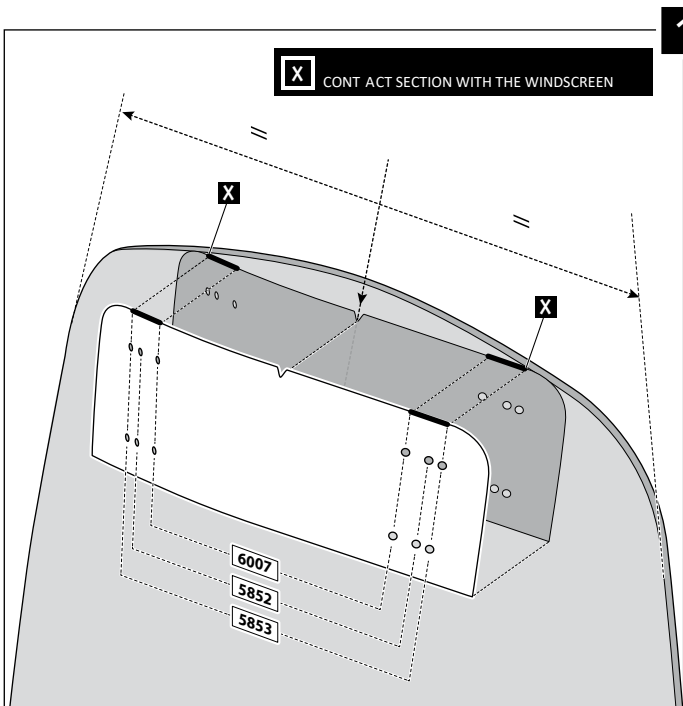
TYPE A



MULTI-ADJUSTABLE VISOR

MOUNTING INSTRUCTIONS

TYPE B



MULTI-ADJUSTABLE VISOR

MOUNTING INSTRUCTIONS

TYPE C

