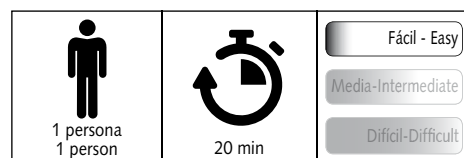
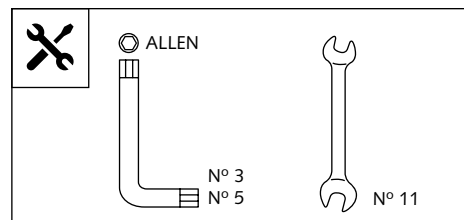

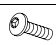



TOURING SCREEN FOR KAWASAKI VERSYS X300 '17-

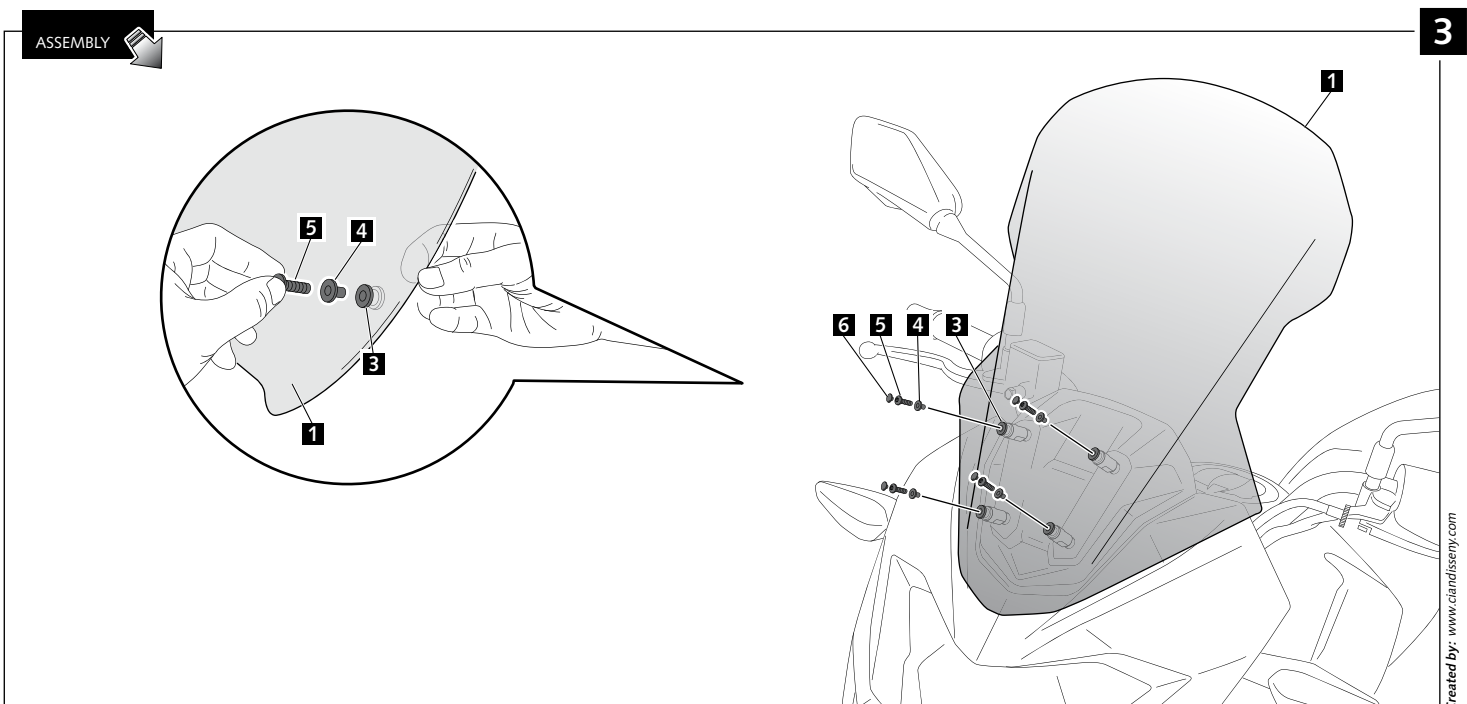
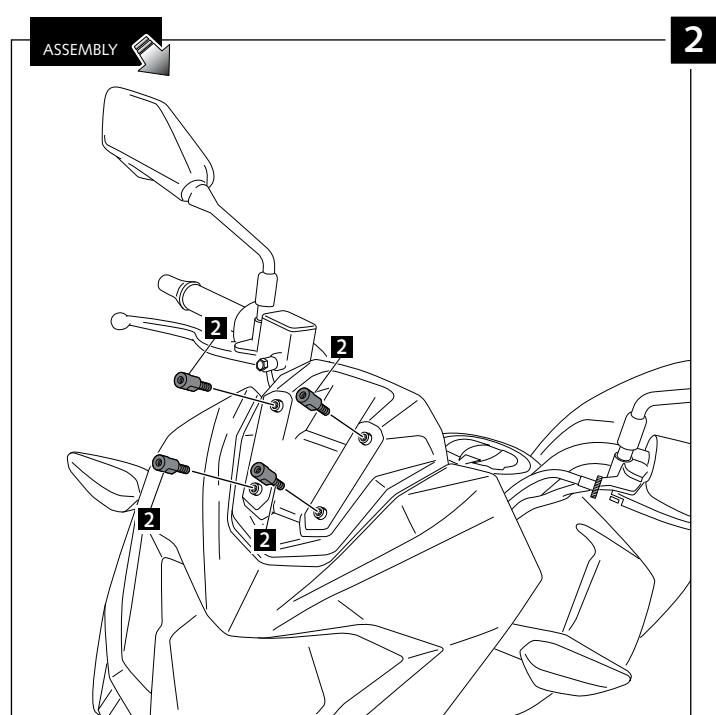
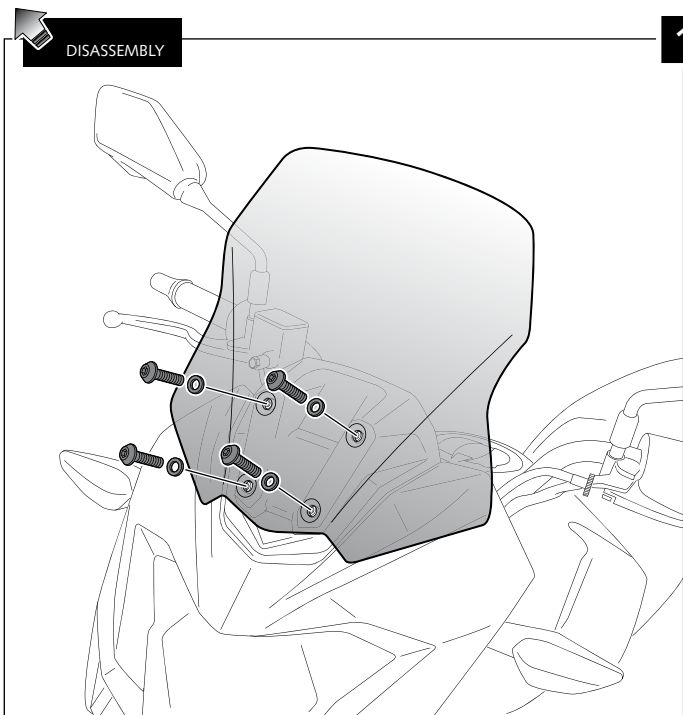
Ref.: 9710



ID	PART	DESCRIPTION	QTY	REF.
1		Screen	1	9710F/W/HM3
2		M6x14 special screw, cylindrical Bush lenght 13 (inner M5x9)	4	TORNI-EM6---772
3		Ø12xØ6x9 silentblock	4	AROPASACABLES-1
4		Ø12xØ6,8x7,3 bush with flange	4	CASQUI-1A---750
5		M5x16 Ø11 ISO 7380 Allen screw	4	TORNI-I7380-493
6		M5 ISO 7380 Allen screw cap	4	TAPON-----85

TOURING SCREEN FOR KAWASAKI VERSYS X300 '17-

MOUNTING INSTRUCTIONS



MULTI-ADJUSTABLE VISOR

TYPE WINDSCREEN **A**



TYPE WINDSCREEN **B**



TYPE WINDSCREEN **C**



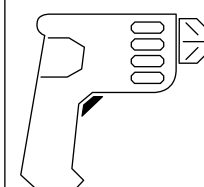
Ref.: 6007

Ref.: 5852

Ref.: 5853

Smoke

Clear



ALLEN

Nº 4



Ø7



1 person



15 min

Fácil - Easy

Media-Intermediate

Difícil-Difficult

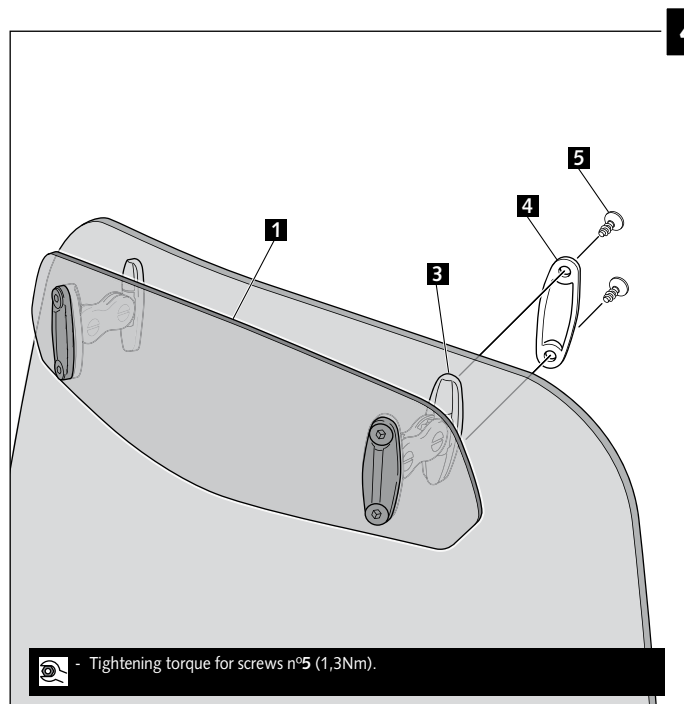
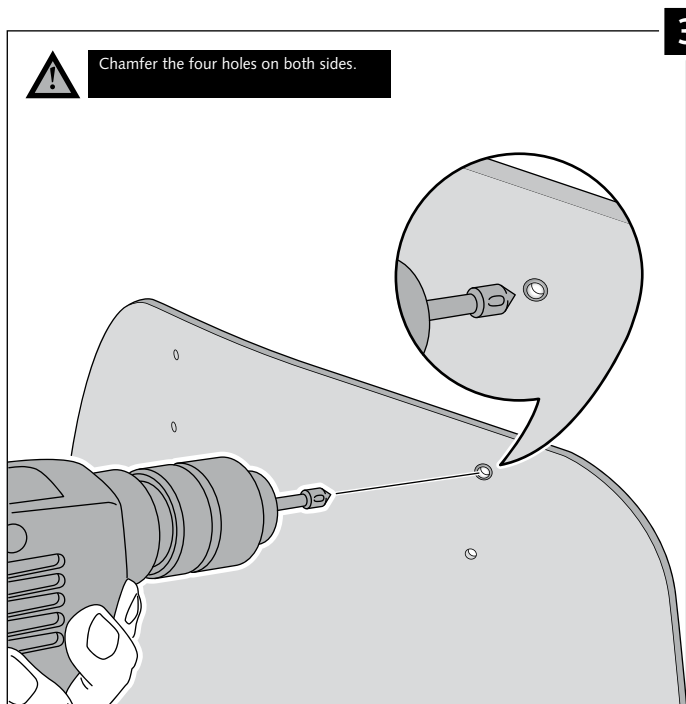
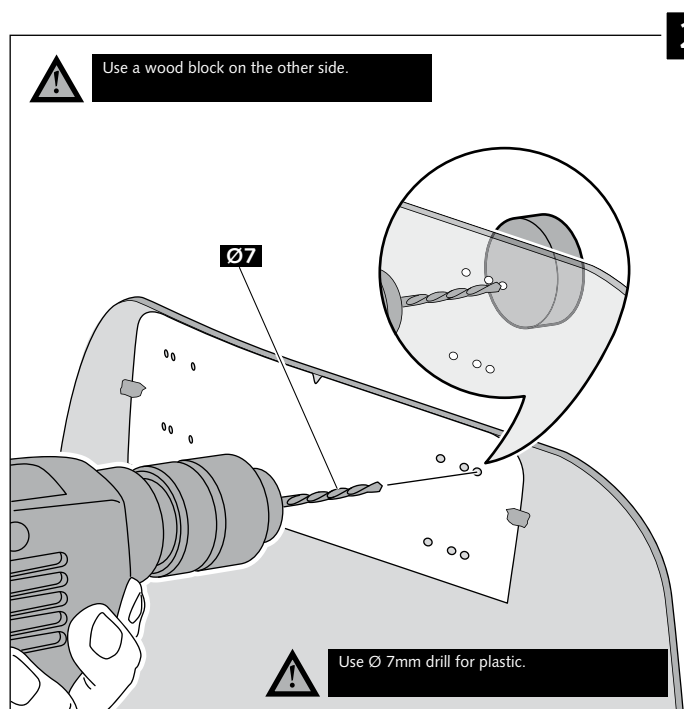
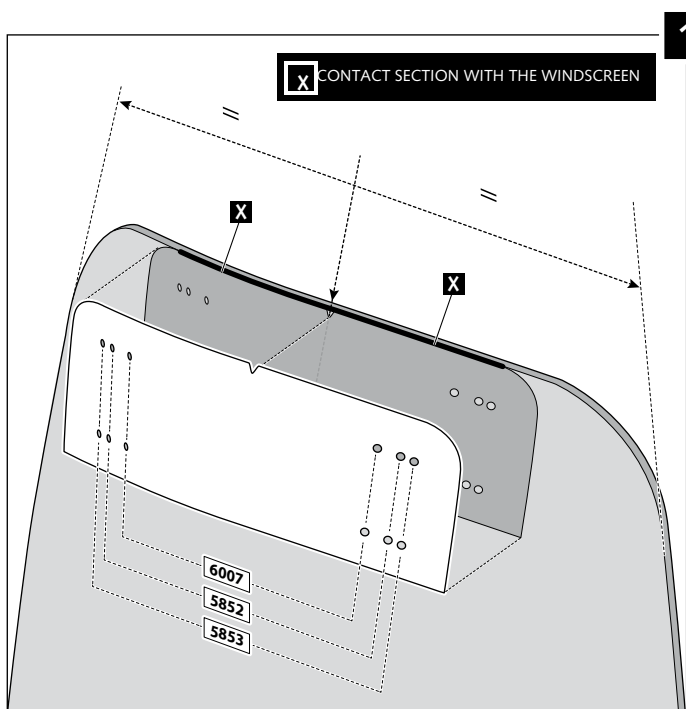
Note:
If the visor is supplied along with the windscreen, the windscreen will come factory-drilled so no drilling is necessary.

ID.	PART	DESCRIPTION	QTY.
1		Visor	1
2		Template	1
3		Multi-adjustable mechanism	2
4		Cap	4
5		Plastic thread fastener M6x12	8

MULTI-ADJUSTABLE VISOR

MOUNTING INSTRUCTIONS

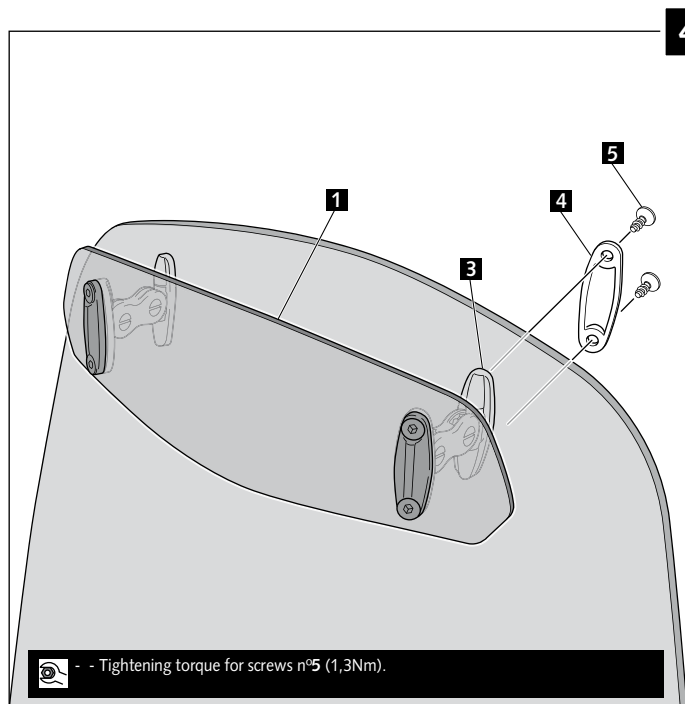
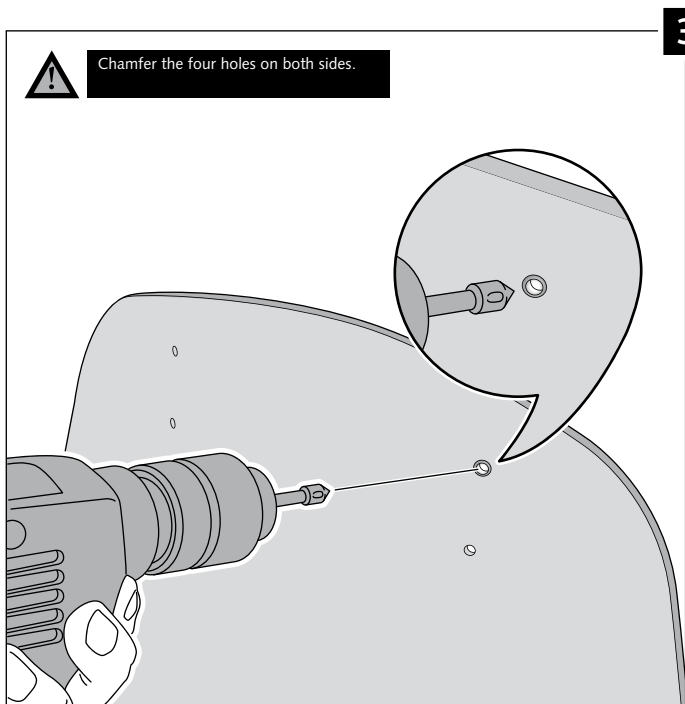
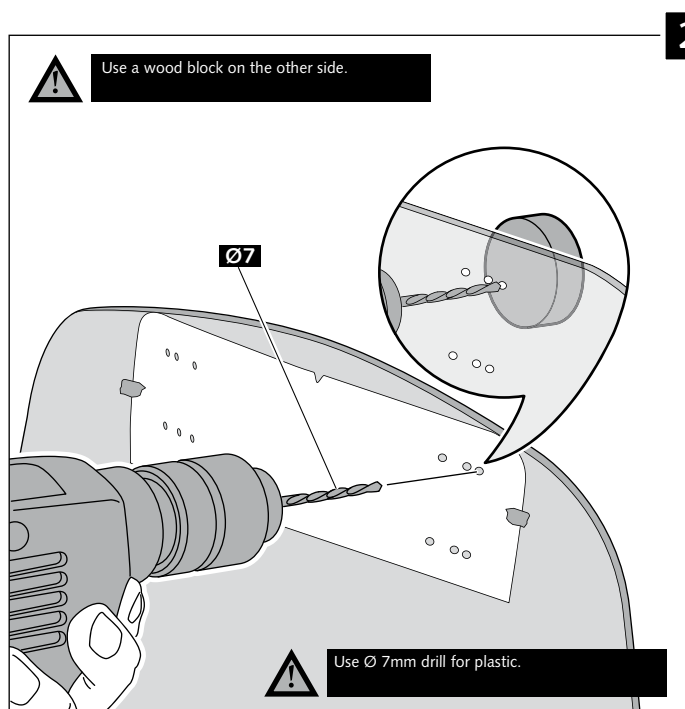
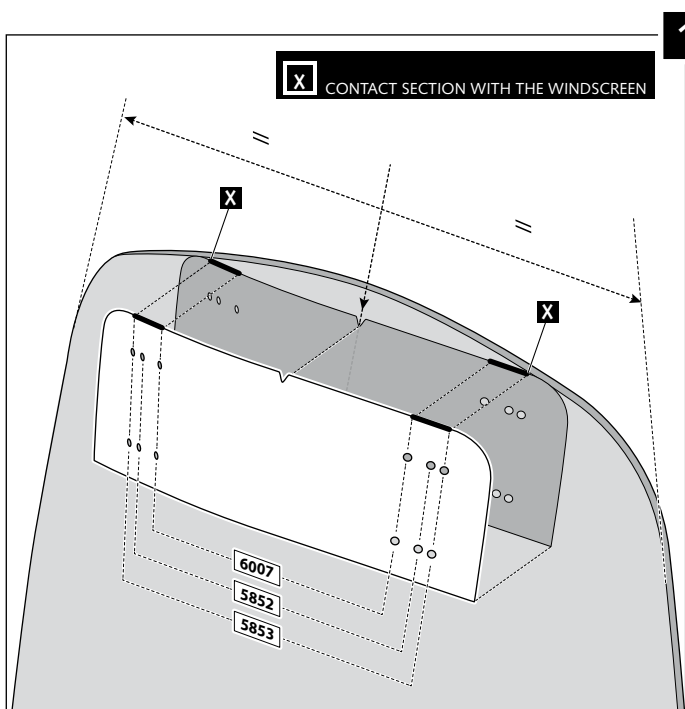
TYPE A



MULTI-ADJUSTABLE VISOR

MOUNTING INSTRUCTIONS

TYPE B



MULTI-ADJUSTABLE VISOR

MOUNTING INSTRUCTIONS

TYPE C

