

MAXISCOOTER UNIVERSAL

M O U N T I N G I N S T R U C T I O N S

REF 9652

HANDSGUARD FOR

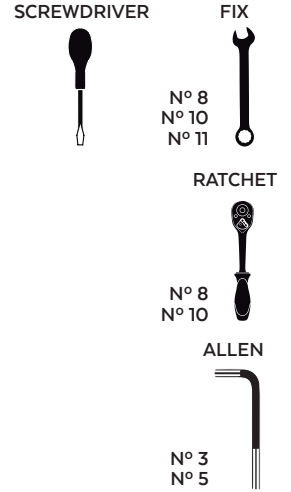
I N D E X

| | |
|--|----|
| EXPLOTING..... | 2 |
| MOUNTING INSTRUCCIONS FOR SUZUKI BURGMAN 125 /200 '14-..... | 4 |
| MOUNTING INSTRUCCIONS FOR SUZUKI BURGMAN 400 '10- | 9 |
| MOUNTING INSTRUCCIONS FOR HONDA INTEGRA 700-750 | 12 |
| MOUNTING INSTRUCCIONS FOR HONDA PCX 125 '14- | 17 |
| MOUNTING INSTRUCCIONS FOR HONDA X-ADV '17- | 22 |
| MOUNTING INSTRUCCIONS FOR KYMCO AK-550 '17- | 25 |
| MOUNTING INSTRUCCIONS FOR KYMCO K-XCT 125i-300i '13- | 28 |
| MOUNTING INSTRUCCIONS FOR KYMCO NEW DOWNTOWN 125i-350i '15- / NEW SUPERDINK 125i-350i '15-..... | 31 |
| MOUNTING INSTRUCCIONS FOR KYMCO SUPERDINK 125i-300i / DOWNTOWN 125i/300i X-TOWN 125-300 '16- /NEW GRAND DINK 300 '16- | 34 |
| MOUNTING INSTRUCCIONS FOR KYMCO XCITING 400i '17- | 37 |
| MOUNTING INSTRUCCIONS FOR YAMAHA N-MAX 125 '15-'20 | 40 |

MAXISCOOTER UNIVERSAL

REF 9652

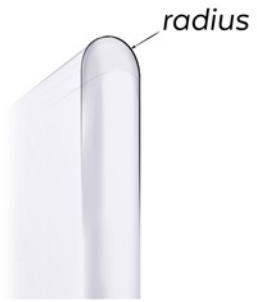
HANDSGUARD FOR



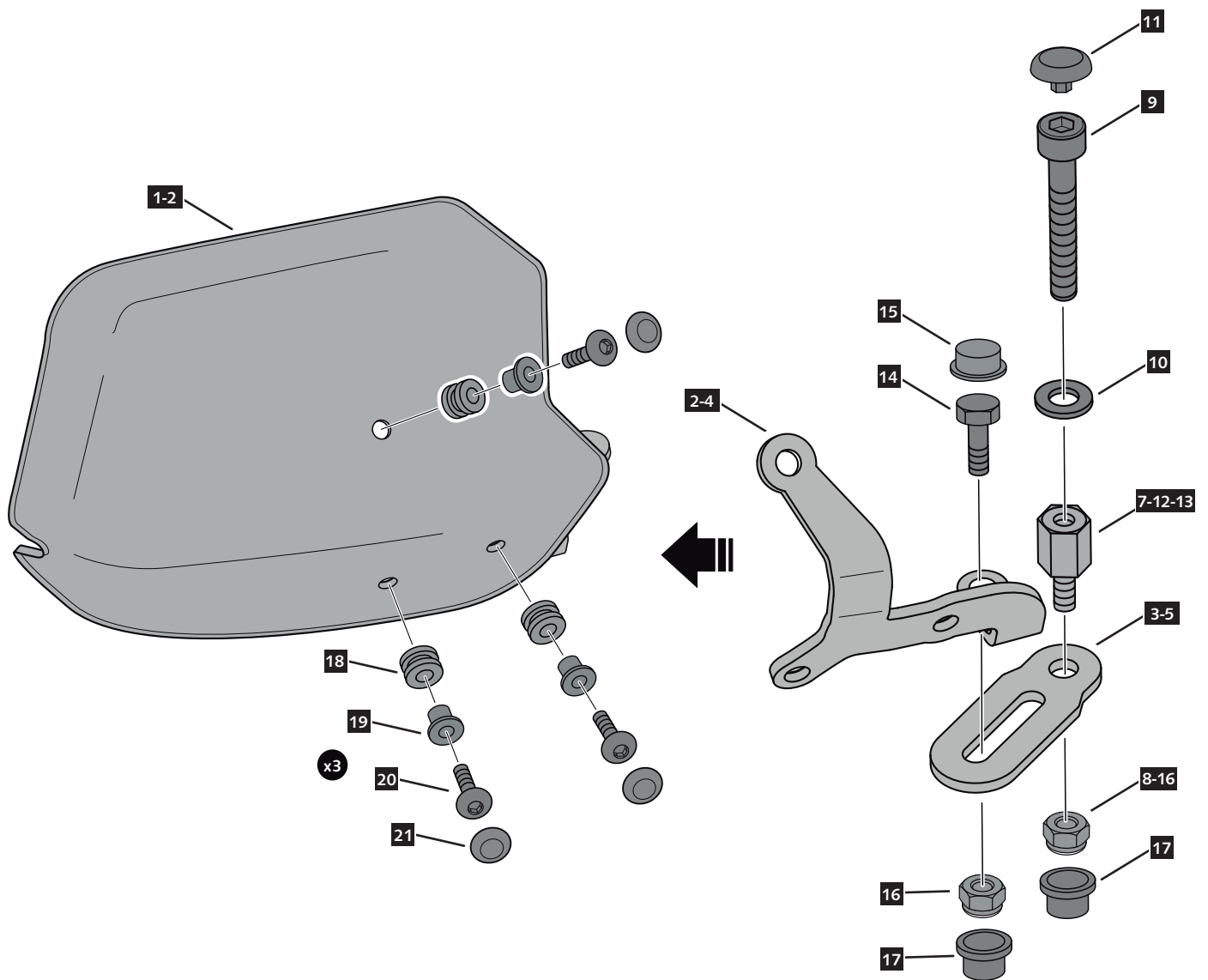
| ID. | PART | DESCRIPTION | QTY. | REF.: |
|-----|------|---|------|-----------------|
| 1 | | Right handguard | 1 | 9652F/H/WM3 |
| 2 | | Left handguard | 1 | 9652F/H/WM3 |
| 3 | | R1 right metal support | 1 | SOPOR-4P-9-9652 |
| 4 | | R2 right metal support | 1 | SOPOR-4P-9-9652 |
| 5 | | L1 left metal support | 1 | SOPOR-4P-9-9652 |
| 6 | | L2 left metal support | 1 | SOPOR-4P-9-9652 |
| 7 | | M5x9 special screw Hexagonal lenght 10 (M5x8) BLACK | 2 | TORNI-EM5---761 |
| 8 | | M5 lock nut | 2 | TUERCA-D982-746 |
| 9 | | M6x40 DIN912 allen screw (black) | 2 | TORNIAD912-0058 |
| 10 | | M6 DIN125 metallic washer (black) | 2 | ARANDEPD125-054 |
| 11 | | M6 DIN912 screw cap | 2 | TAPON-----88 |
| 12 | | M6x12 special screw Hexagonal lenght 10 (M6x6) BLACK | 2 | TORNI-EM6---801 |
| 13 | | M6x12 special screw Hexagonal lenght 20 (M6x12) BLACK | 2 | TORNI-EM6---802 |
| 14 | | M6x14 DIN933 screw BLACK | 2 | TOZB00M60000107 |
| 15 | | M6 DIN933 screw cap | 2 | CAPERUTUM6-21/1 |
| 16 | | M6 DIN985 lock nut | 4 | TUZBM6000000024 |
| 17 | | M6 nut cap | 4 | CAPERUTUM6-21/1 |
| 18 | | Ø12xØ6x9 silentblock | 6 | AROPASACABLES-1 |
| 19 | | Ø12xØ6,8x7,3 bush with flange | 6 | CASQUI-1A---750 |
| 20 | | M5 x16 Ø11 ISO 7380 allen screw | 6 | TORNI-I7380-493 |
| 21 | | M5 ISO7380 screw cap | 6 | TAPON-----85 |

MAXISCOOTER UNIVERSAL

MOUNTING INSTRUCTIONS



ROUNDED CONTOUR-PROFILE



SUZUKI BURGMAN 125-200 '14-

REF 9652

HANDSGUARD FOR



| ID. | * | PART | DESCRIPTION | QTY. | REF.: |
|-----|---|------|---|------|-----------------|
| 1 | | | Right handguard | 1 | 9652F/H/WM3 |
| 2 | | | Left handguard | 1 | 9652F/H/WM3 |
| 3 | | | R1 right metal support | 1 | SOPOR-4P-9-9652 |
| 4 | | | R2 right metal support | 1 | SOPOR-4P-9-9652 |
| 5 | | | L1 left metal support | 1 | SOPOR-4P-9-9652 |
| 6 | | | L2 left metal support | 1 | SOPOR-4P-9-9652 |
| 7 | * | | M5x9 special screw Hexagonal lenght 10 (M5x8) BLACK | 2 | TORNI-EM5---761 |
| 8 | * | | M5 lock nut | 2 | TUERCA-D982-746 |
| 9 | * | | M6x40 DIN912 allen screw (black) | 2 | TORNI-AD912-058 |
| 10 | * | | M6 DIN125 metallic washer (black) | 2 | ARANDEPD125-054 |
| 11 | * | | M6 DIN912 screw cap | 2 | TAPON-----88 |
| 12 | | | M6x12 special screw Hexagonal lenght 10 (M6x6) BLACK | 2 | TORNI-EM6---801 |
| 13 | * | | M6x12 special screw Hexagonal lenght 20 (M6x12) BLACK | 2 | TORNI-EM6---802 |
| 14 | | | M6x14 DIN933 screw BLACK | 2 | TOZB00M60000107 |
| 15 | | | M6 DIN933 screw cap | 2 | CAPERUZTOM6-063 |
| 16 | | | M6 DIN985 lock nut | 4 | TUZBM6000000024 |
| 17 | | | M6 nut cap | 4 | CAPERUTUM6-21/1 |
| 18 | | | Ø12xØ6x9 silentblock | 6 | AROPASACABLES-1 |
| 19 | | | Ø12xØ6,8x7,3 bush with flange | 6 | CASQUI-1A---750 |
| 20 | | | M5 x16 Ø11 ISO 7380 allen screw | 6 | TORNI-I7380-493 |
| 21 | | | M5 ISO7380 screw cap | 6 | TAPON-----85 |

* NOT USED FOR THIS MODEL

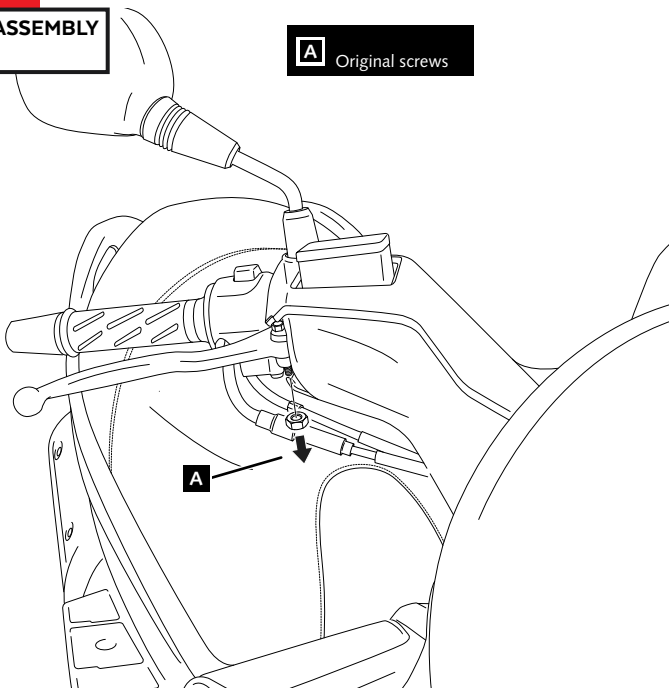
SUZUKI BURGMAN 125-200 '14-

MOUNTING INSTRUCTIONS

RIGHT SIDE

1

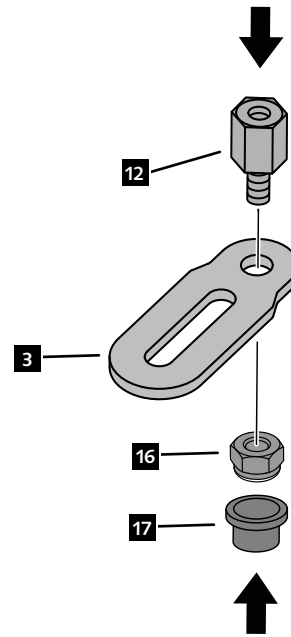
DISASSEMBLY



A Original screws

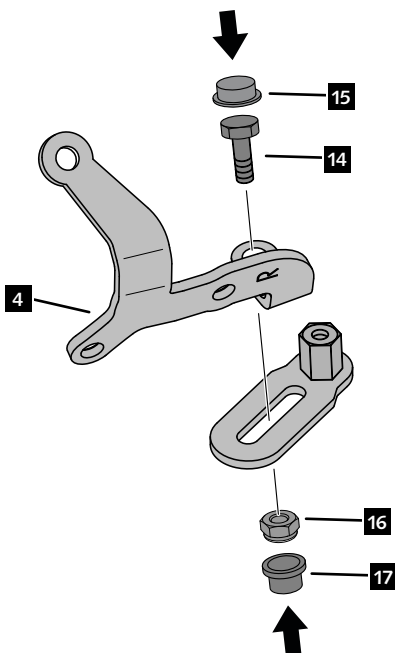
2

ASSEMBLY



3

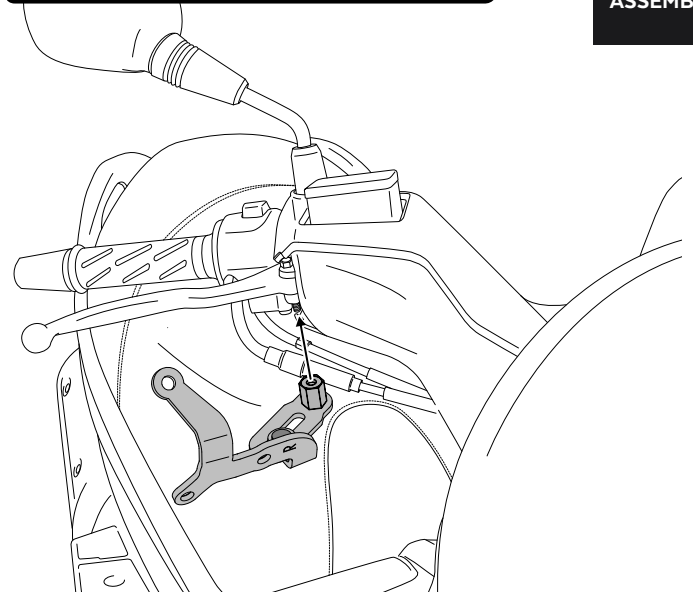
ASSEMBLY



4

ASSEMBLY

⚠ Check the correct operation of the lever



MOUNT THE BRACKET ASSEMBLY PROGRESSIVELY TIGHTENING THE HEXAGONAL NUT (ID.16) AND THE LOCK NUT (ID.16)

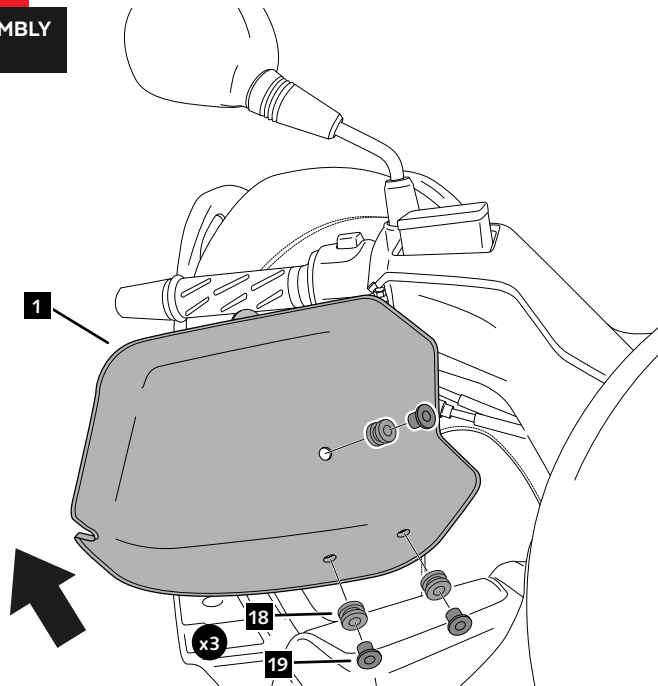
SUZUKI BURGMAN 125-200 '14-

- MOUNTING INSTRUCTIONS

RIGHT SIDE

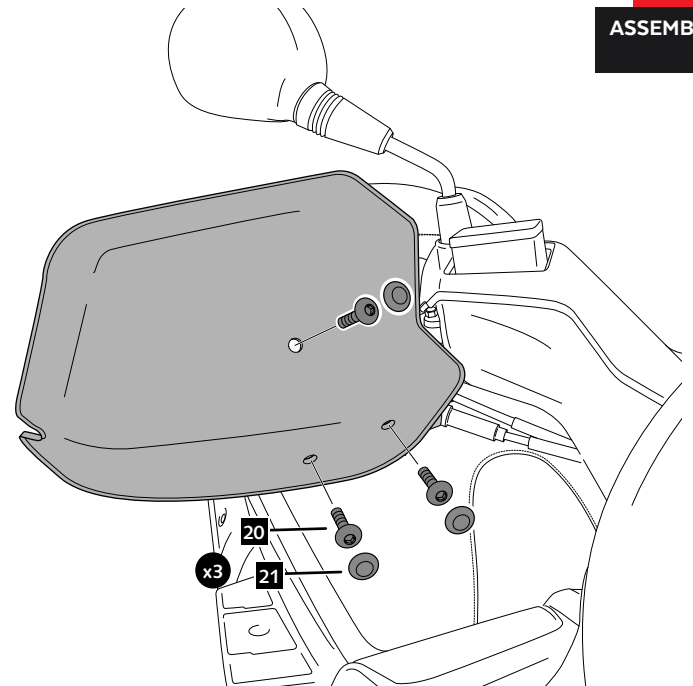
5

ASSEMBLY



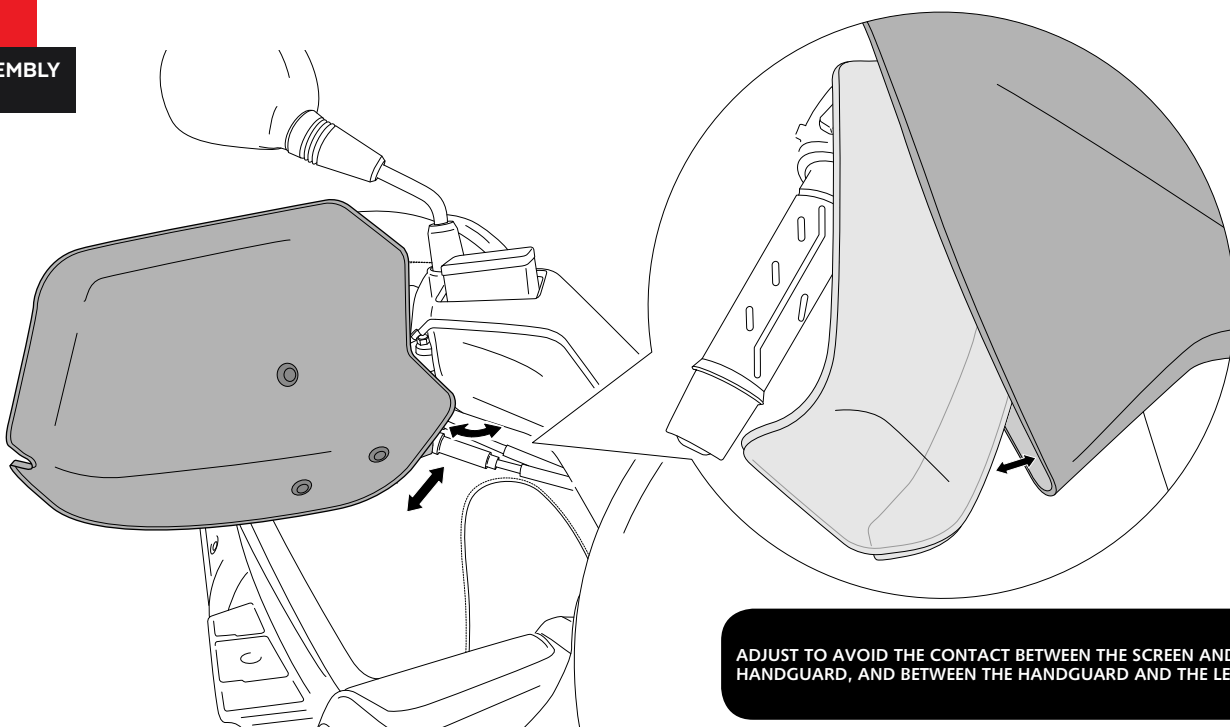
6

ASSEMBLY



7

ASSEMBLY



ADJUST TO AVOID THE CONTACT BETWEEN THE SCREEN AND THE HANDGUARD, AND BETWEEN THE HANDGUARD AND THE LEVER

SUZUKI BURGMAN 125-200 '14-

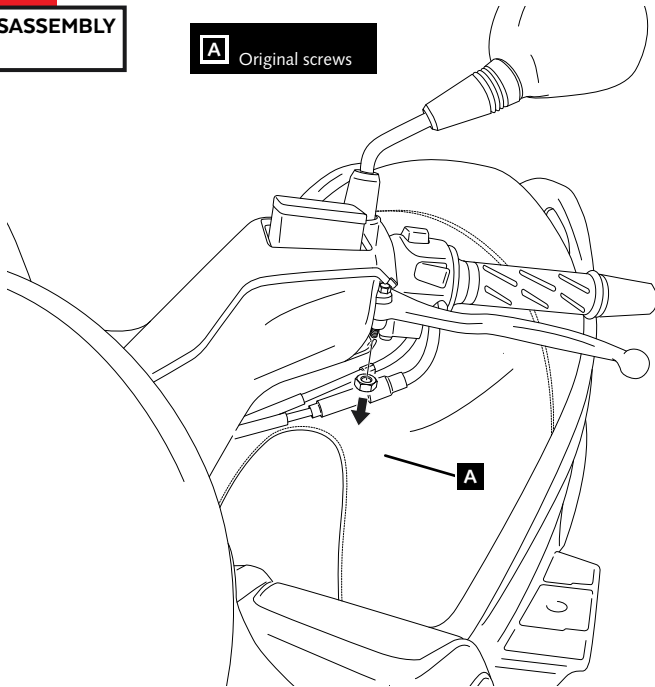
MOUNTING INSTRUCTIONS

LEFT SIDE

1

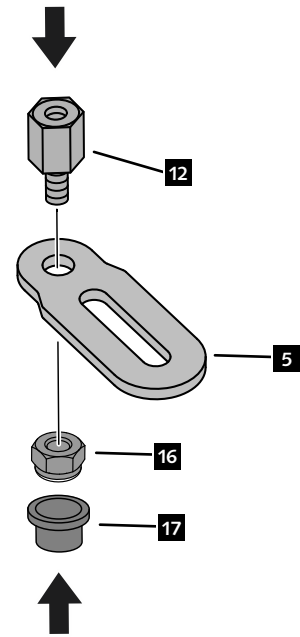
DISASSEMBLY

A Original screws



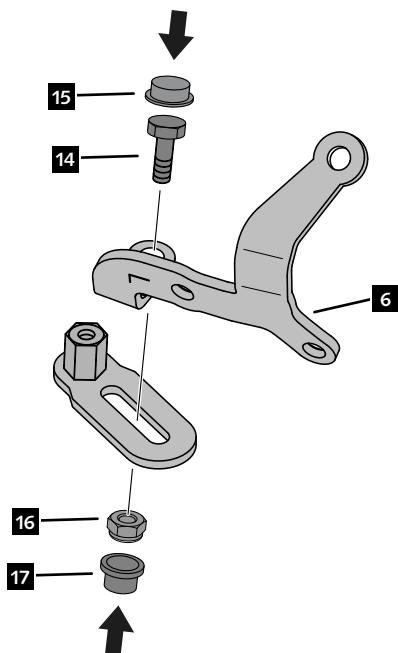
2

ASSEMBLY



3

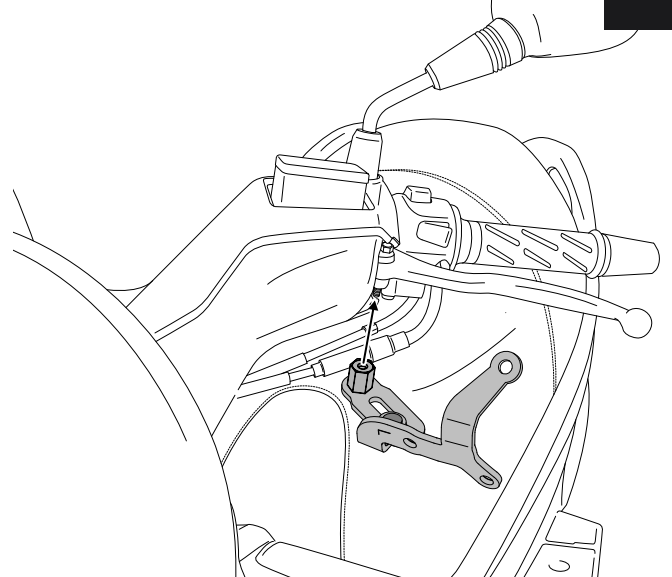
ASSEMBLY



4

ASSEMBLY

⚠ Check the correct operation of the lever



MOUNT THE BRACKET ASSEMBLY PROGRESSIVELY TIGHTENING THE HEXAGONAL NUT (ID.16) AND THE LOCK NUT (ID.16)

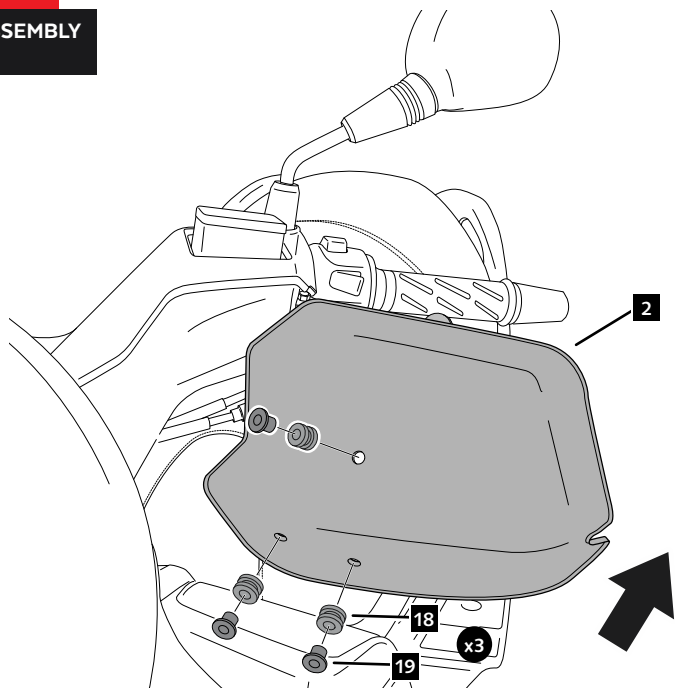
SUZUKI BURGMAN 125-200 '14-

- MOUNTING INSTRUCTIONS -

- LEFT SIDE -

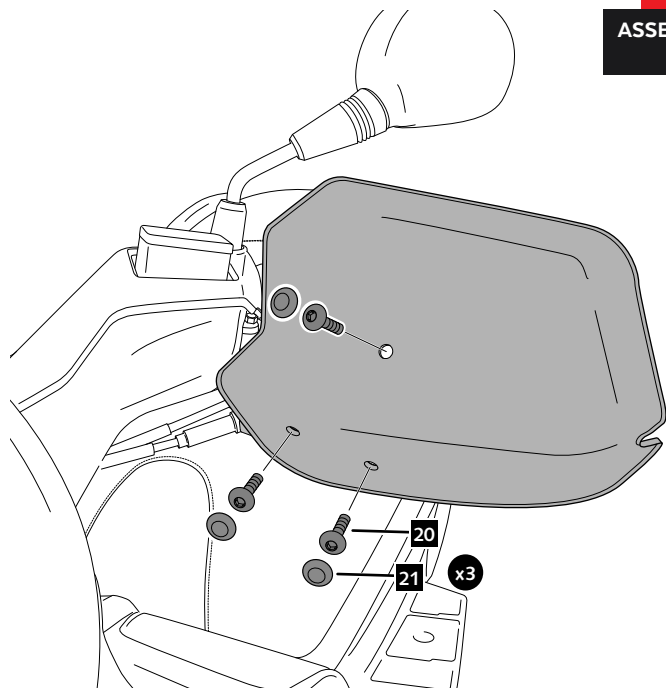
5

ASSEMBLY



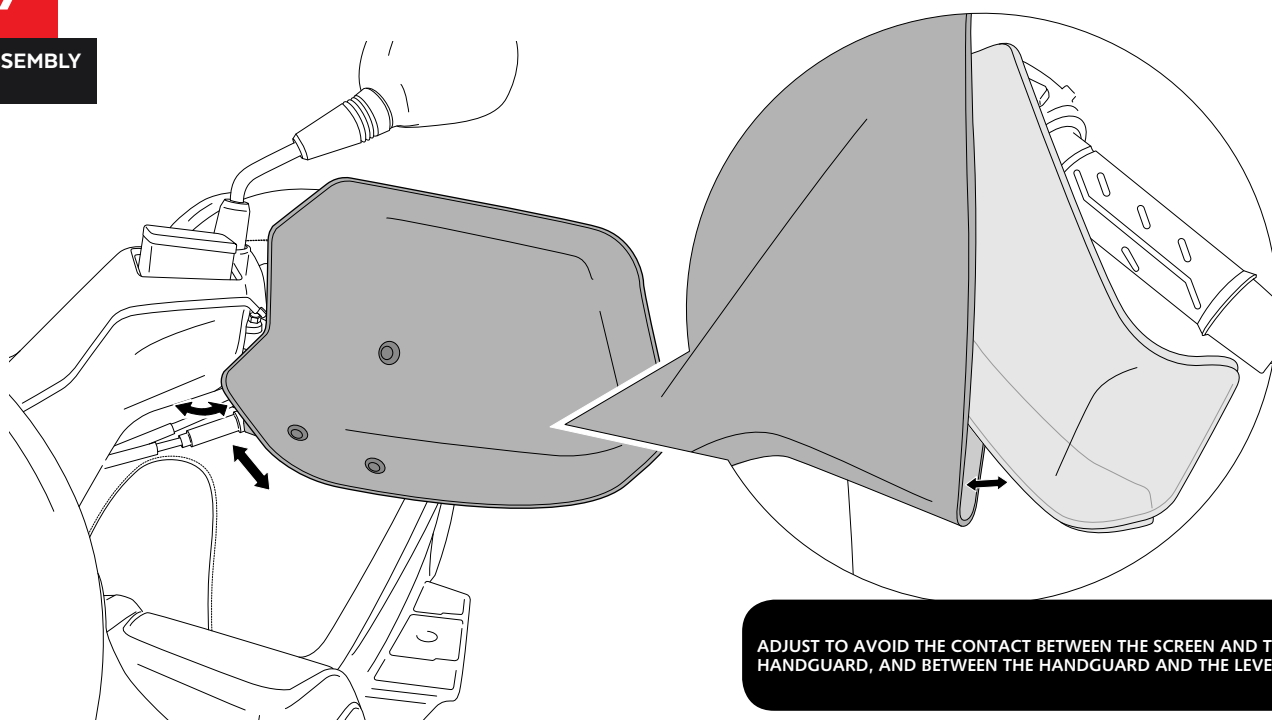
6

ASSEMBLY



7

ASSEMBLY



ADJUST TO AVOID THE CONTACT BETWEEN THE SCREEN AND THE HANDGUARD, AND BETWEEN THE HANDGUARD AND THE LEVER

SUZUKI BURGMAN 400 '10-

REF 9652

HANDSGUARD FOR



1 Person



20 min



INTERMEDIATE



FIX



Nº 10

RATCHET



Nº 10

ALLEN



Nº 3

| ID. | * | PART | DESCRIPTION | QTY. | REF.: |
|-----|---|------|--|------|-----------------|
| 1 | | | Right handguard | 1 | 9652F/H/WM3 |
| 2 | | | Left handguard | 1 | 9652F/H/WM3 |
| 3 | | | R1 right metal support | 1 | SOPOR-4P-9-9652 |
| 4 | | | R2 right metal support | 1 | SOPOR-4P-9-9652 |
| 5 | | | L1 left metal support | 1 | SOPOR-4P-9-9652 |
| 6 | | | L2 left metal support | 1 | SOPOR-4P-9-9652 |
| 7 | * | | M5x9 special screw Hexagonal lenght 10 (M5x8) BLACK | 2 | TORNI-EM5---761 |
| 8 | * | | M5 lock nut | 2 | TUERCA-D982-746 |
| 9 | * | | M6x40 DIN912 allen screw (black) | 2 | TORNI-AD912-058 |
| 10 | * | | M6 DIN125 metallic washer (black) | 2 | ARANDEPD125-054 |
| 11 | * | | M6 DIN912 screw cap | 2 | TAPON-----88 |
| 12 | * | | M6x12 special screw Hexagonal lenght 10 (M6x6) BLACK | 2 | TORNI-EM6---801 |
| 13 | | | M6x12 special screw Hexagonal lenght 20 (M6x12) BLACK | 2 | TORNI-EM6---802 |
| 14 | | | M6x14 DIN933 screw BLACK | 2 | TOZB00M60000107 |
| 15 | | | M6 DIN933 screw cap | 2 | CAPERUZTOM6-063 |
| 16 | | | M6 DIN985 lock nut | 4 | TUZBM6000000024 |
| 17 | | | M6 nut cap | 4 | CAPERUTUM6-21/1 |
| 18 | | | Ø12xØ6x9 silentblock | 6 | AROPASACABLES-1 |
| 19 | | | Ø12xØ6,8x7,3 bush with flange | 6 | CASQUI-1A---750 |
| 20 | | | M5 x16 Ø11 ISO 7380 allen screw | 6 | TORNI-I7380-493 |
| 21 | | | M5 ISO7380 screw cap | 6 | TAPON-----85 |

* NOT USED FOR THIS MODEL

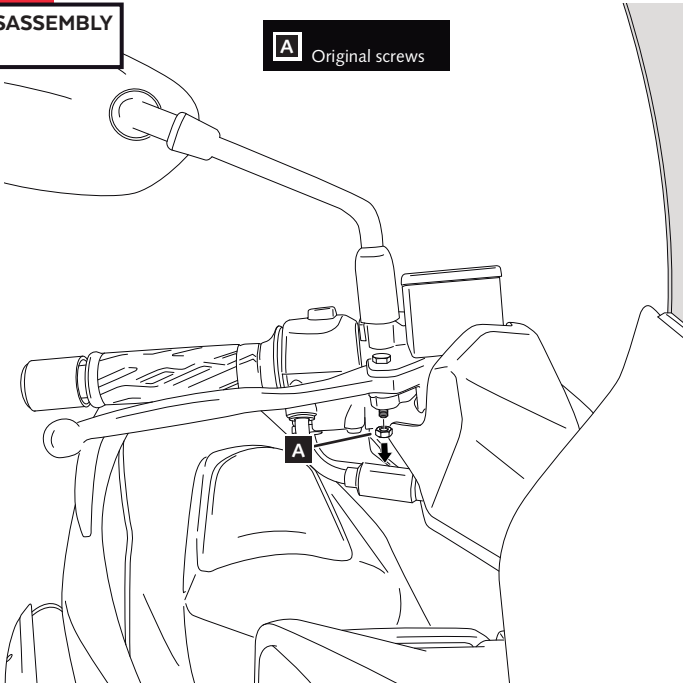
SUZUKI BURGMAN 400 '10-

MOUNTING INSTRUCTIONS

1

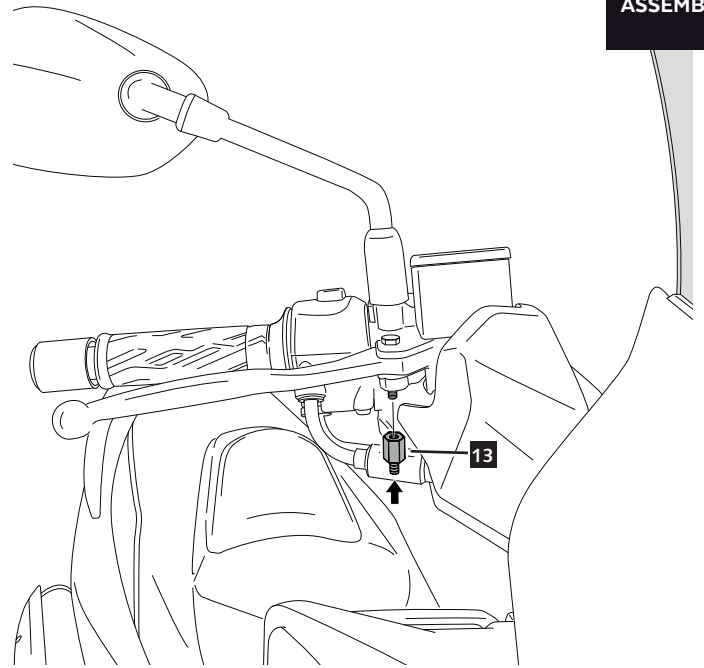
DISASSEMBLY

A Original screws



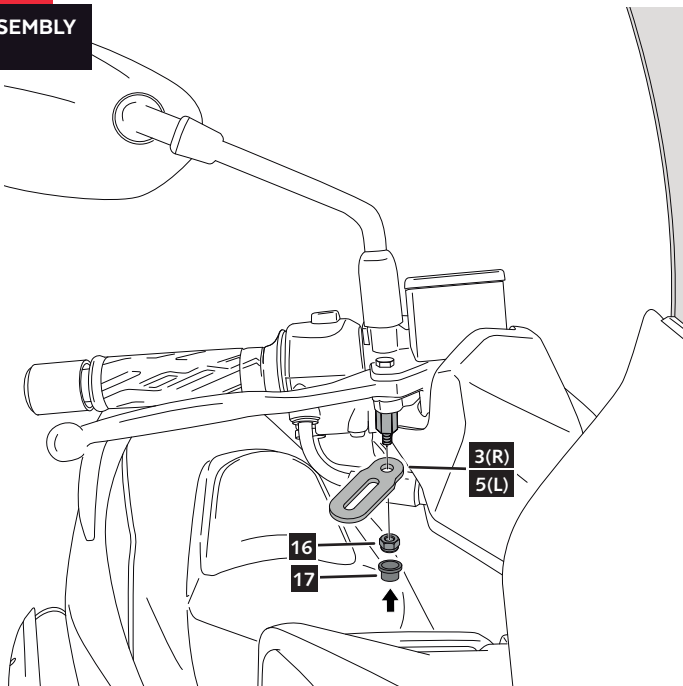
2

ASSEMBLY



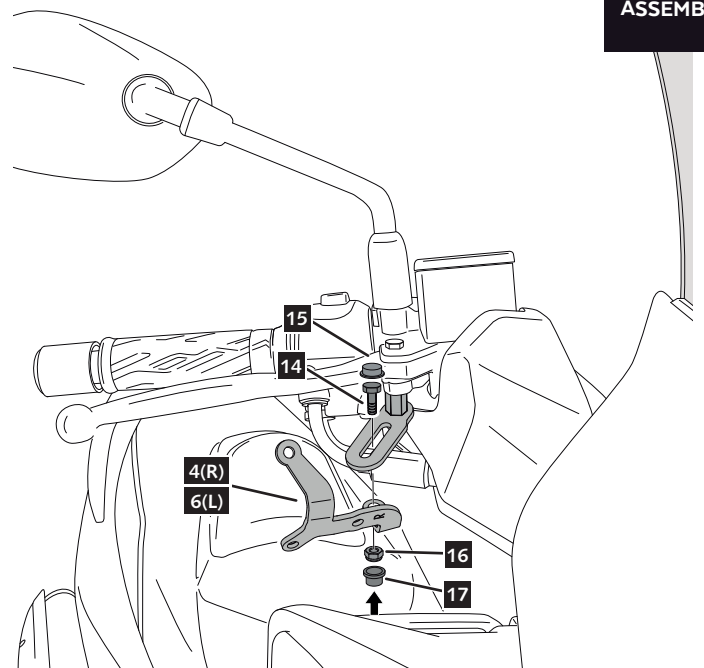
3

ASSEMBLY



4

ASSEMBLY

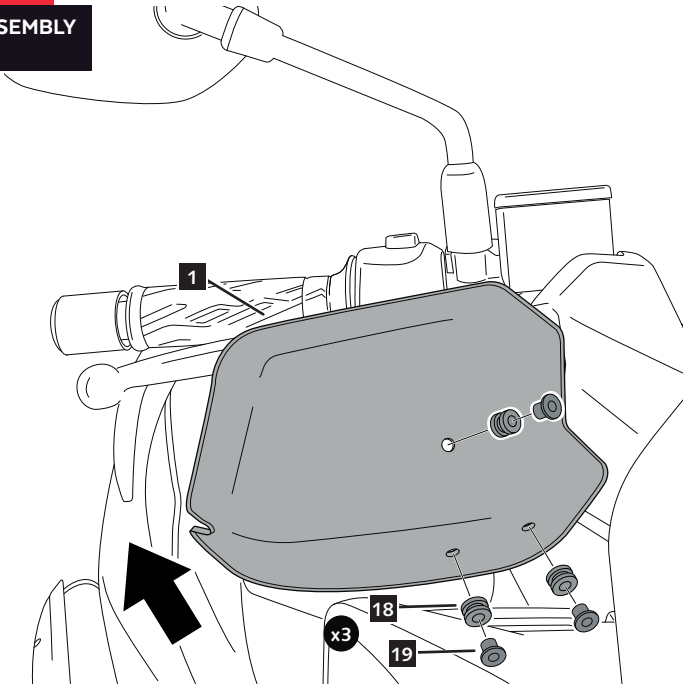


SUZUKI BURGMAN 400 '10-

MOUNTING INSTRUCTIONS

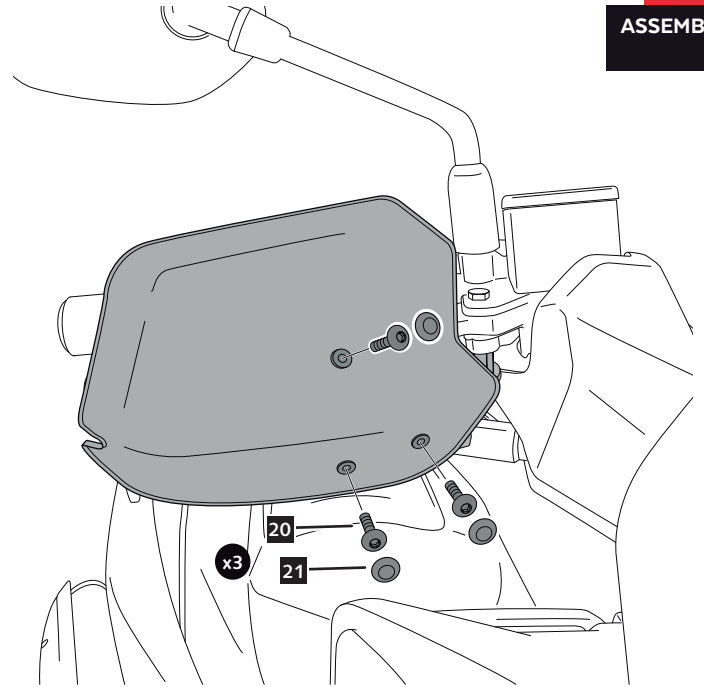
5

ASSEMBLY



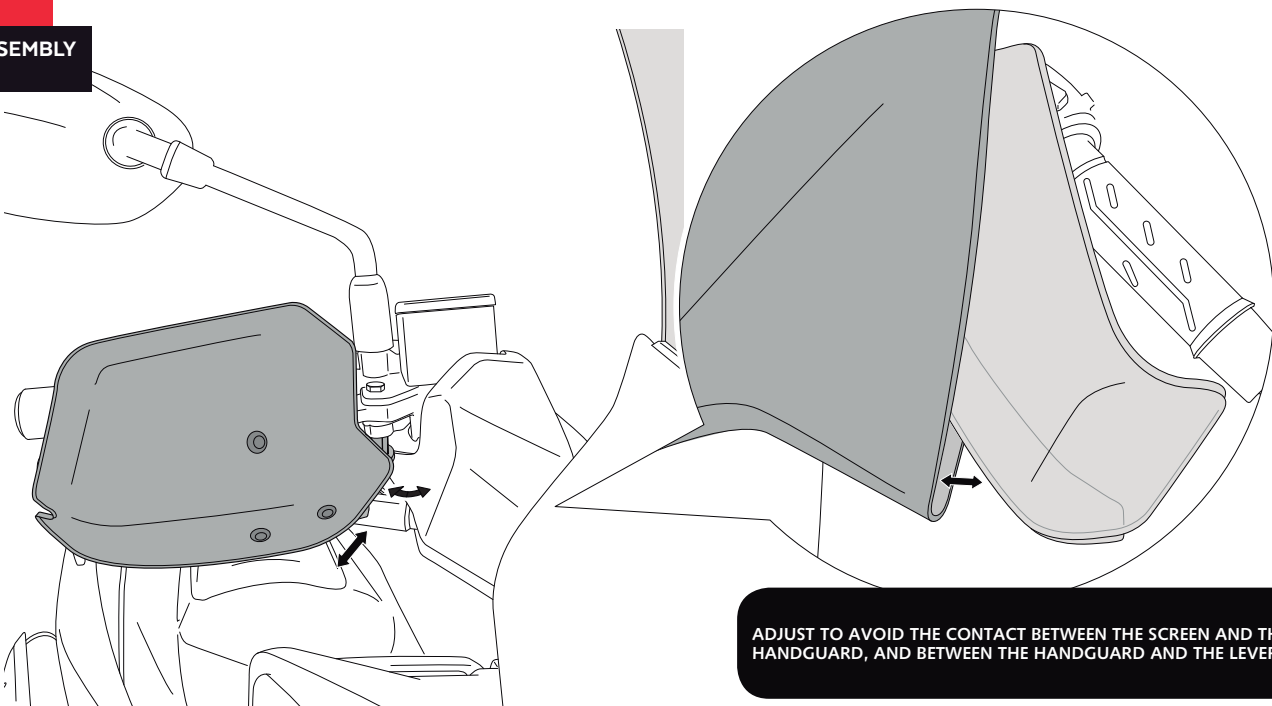
6

ASSEMBLY



7

ASSEMBLY



ADJUST TO AVOID THE CONTACT BETWEEN THE SCREEN AND THE HANDGUARD, AND BETWEEN THE HANDGUARD AND THE LEVER

HONDA INTEGRA 700-750

REF 9652

HANDSGUARD FOR



SCREWDRIVER



FIX



Nº 8
Nº 10
Nº 11

RATCHET



Nº 8
Nº 10

ALLEN



Nº 3

| ID. | * | PART | DESCRIPTION | QTY. | REF.: |
|-----|---|------|---|------|-----------------|
| 1 | | | Right handguard | 1 | 9652F/H/WM3 |
| 2 | | | Left handguard | 1 | 9652F/H/WM3 |
| 3 | | | R1 right metal support | 1 | SOPOR-4P-9-9652 |
| 4 | | | R2 right metal support | 1 | SOPOR-4P-9-9652 |
| 5 | | | L1 left metal support | 1 | SOPOR-4P-9-9652 |
| 6 | | | L2 left metal support | 1 | SOPOR-4P-9-9652 |
| 7 | * | | M5x9 special screw Hexagonal lenght 10 (M5x8) BLACK | 2 | TORNI-EM5---761 |
| 8 | * | | M5 lock nut | 2 | TUERCA-D982-746 |
| 9 | * | | M6x40 DIN912 allen screw (black) | 2 | TORNI-AD912-058 |
| 10 | * | | M6 DIN125 metallic washer (black) | 2 | ARANDEPD125-054 |
| 11 | * | | M6 DIN912 screw cap | 2 | TAPON-----88 |
| 12 | * | | M6x12 special screw Hexagonal lenght 10 (M6x6) BLACK | 2 | TORNI-EM6---801 |
| 13 | | | M6x12 special screw Hexagonal lenght 20 (M6x12) BLACK | 2 | TORNI-EM6---802 |
| 14 | | | M6x14 DIN933 screw BLACK | 2 | TOZB00M60000107 |
| 15 | | | M6 DIN933 screw cap | 2 | CAPERUZTOM6-063 |
| 16 | | | M6 DIN985 lock nut | 4 | TUZBM6000000024 |
| 17 | | | M6 nut cap | 4 | CAPERUTUM6-21/1 |
| 18 | | | Ø12xØ6x9 silentblock | 6 | AROPASACABLES-1 |
| 19 | | | Ø12xØ6,8x7,3 bush with flange | 6 | CASQUI-1A---750 |
| 20 | | | M5 x16 Ø11 ISO 7380 allen screw | 6 | TORNI-I7380-493 |
| 21 | | | M5 ISO7380 screw cap | 6 | TAPON-----85 |

* NOT USED FOR THIS MODEL

HONDA INTEGRA 700-750

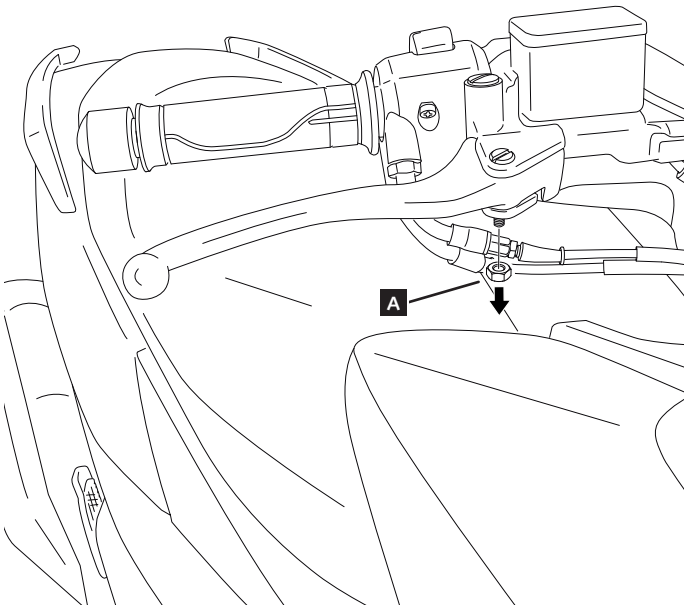
MOUNTING INSTRUCTIONS

RIGHT SIDE

1

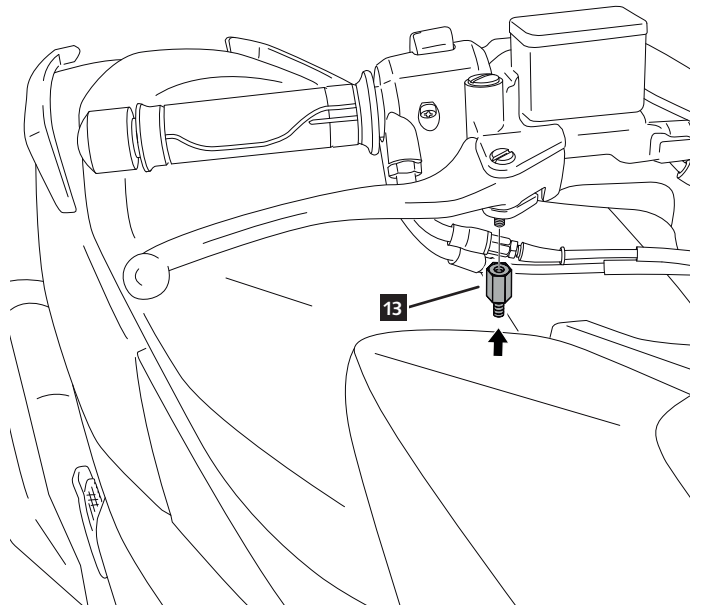
DISASSEMBLY

A Original screws



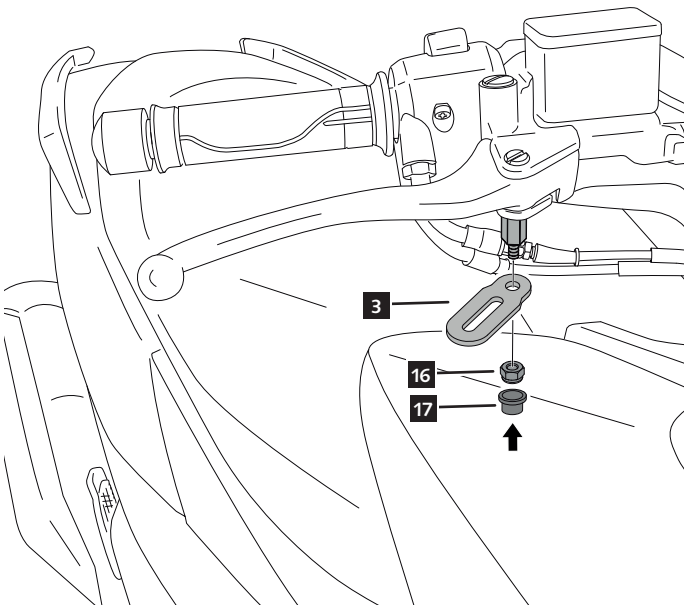
2

ASSEMBLY



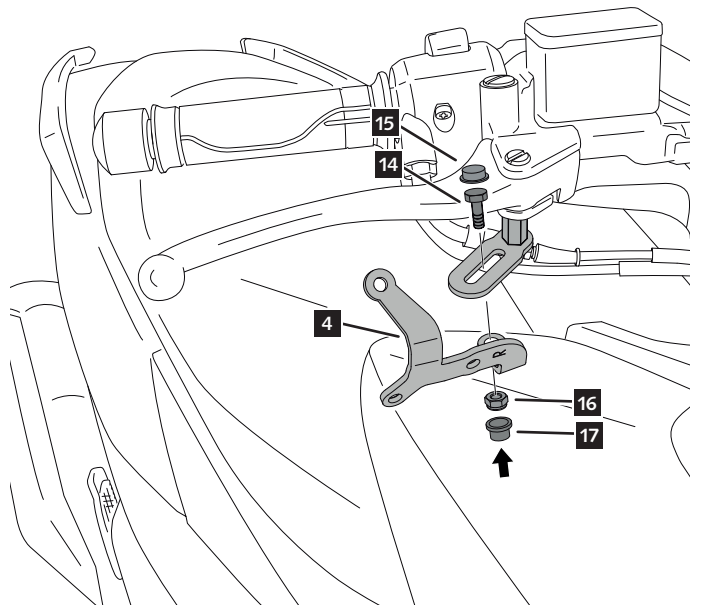
3

ASSEMBLY



4

ASSEMBLY



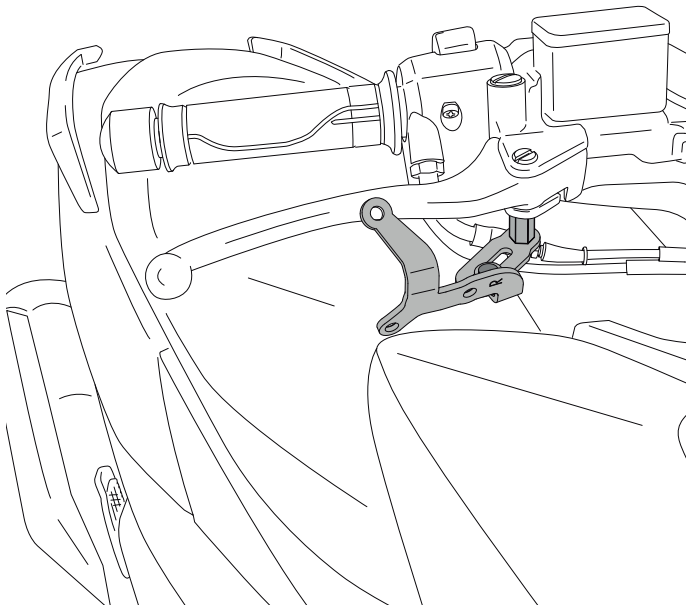
HONDA INTEGRA 700-750

- MOUNTING INSTRUCTIONS -

- RIGHT SIDE -

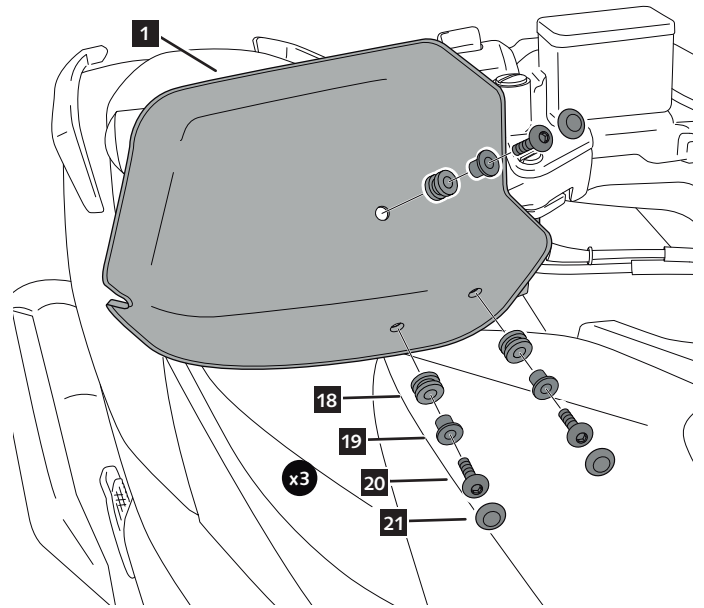
5

ASSEMBLY



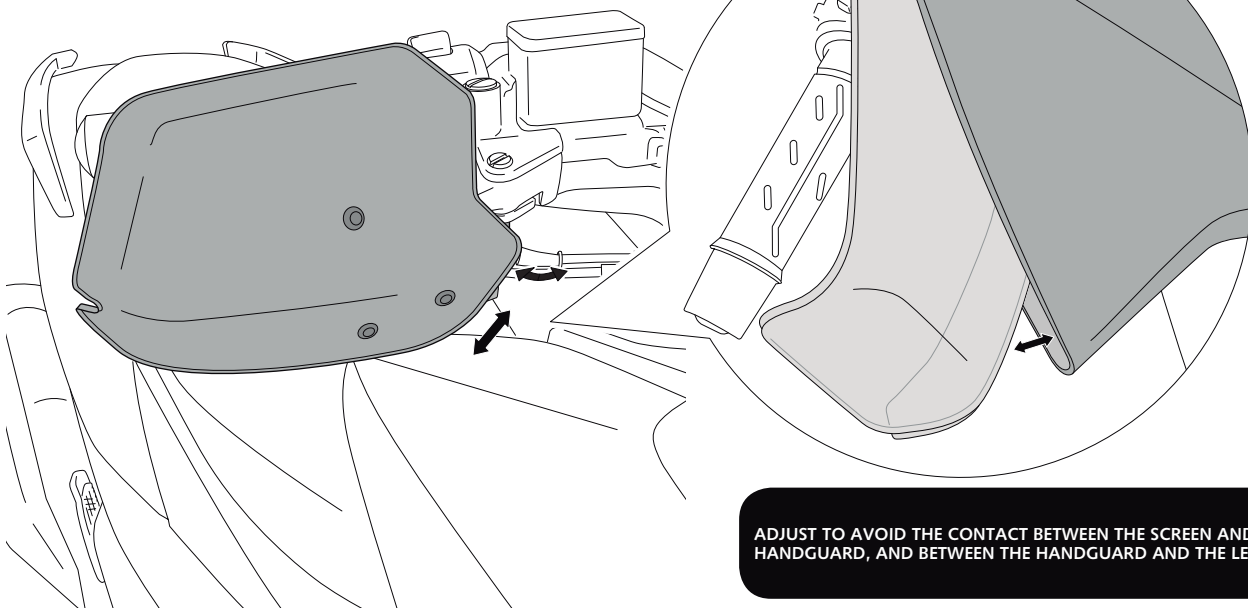
6

ASSEMBLY



7

ASSEMBLY



ADJUST TO AVOID THE CONTACT BETWEEN THE SCREEN AND THE HANDGUARD, AND BETWEEN THE HANDGUARD AND THE LEVER

HONDA FORZA 125 / FORZA 300 '18- / INTEGRA 700-750

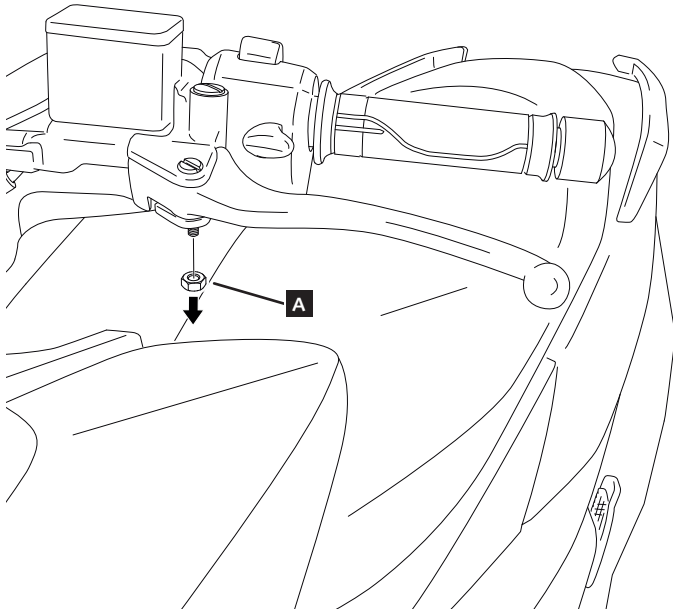
- MOUNTING INSTRUCTIONS -

- LEFT SIDE -

1

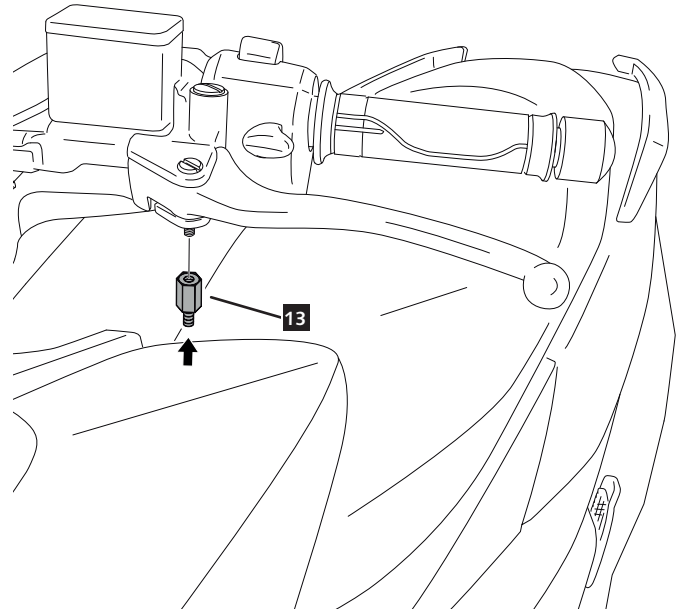
DISASSEMBLY

A Original screws



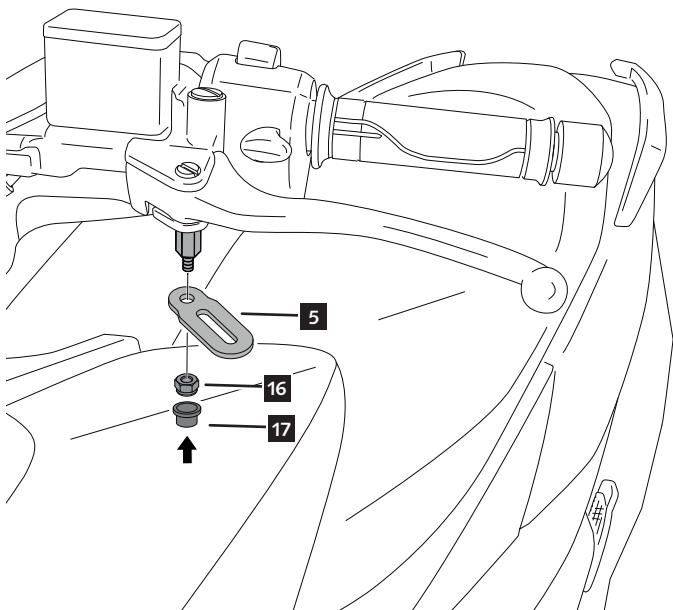
2

ASSEMBLY



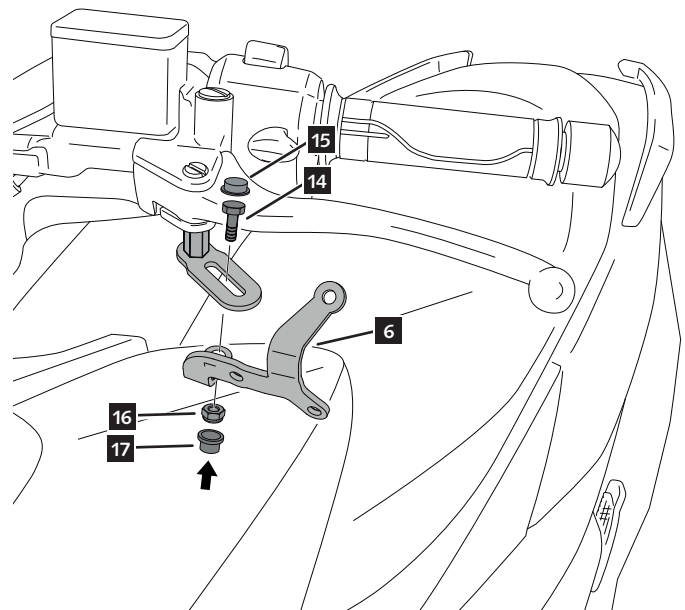
3

ASSEMBLY



4

ASSEMBLY



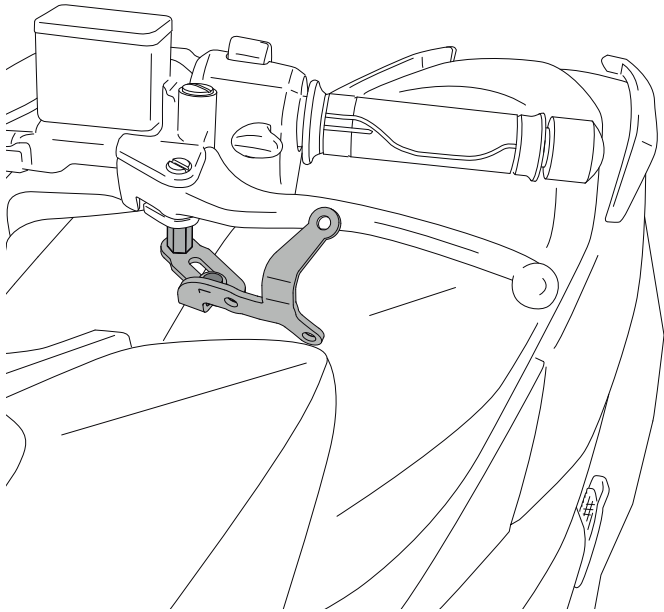
HONDA FORZA 125 / FORZA 300 '18- / INTEGRA 700-750

MOUNTING INSTRUCTIONS

LEFT SIDE

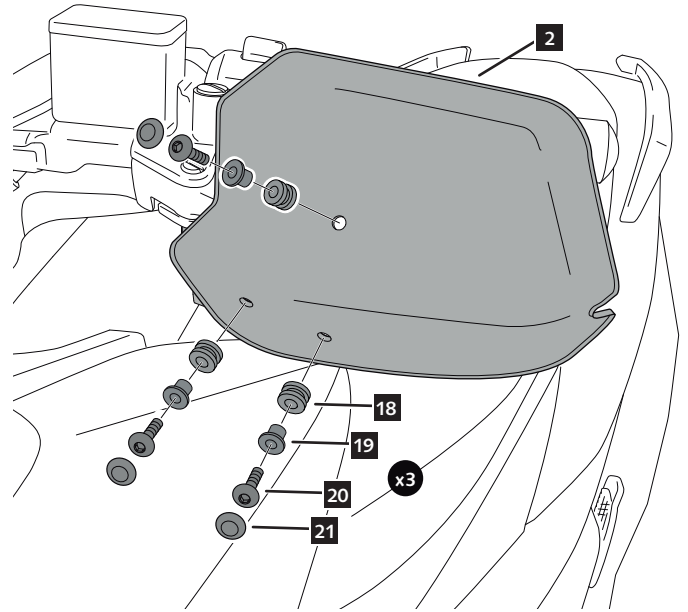
5

ASSEMBLY



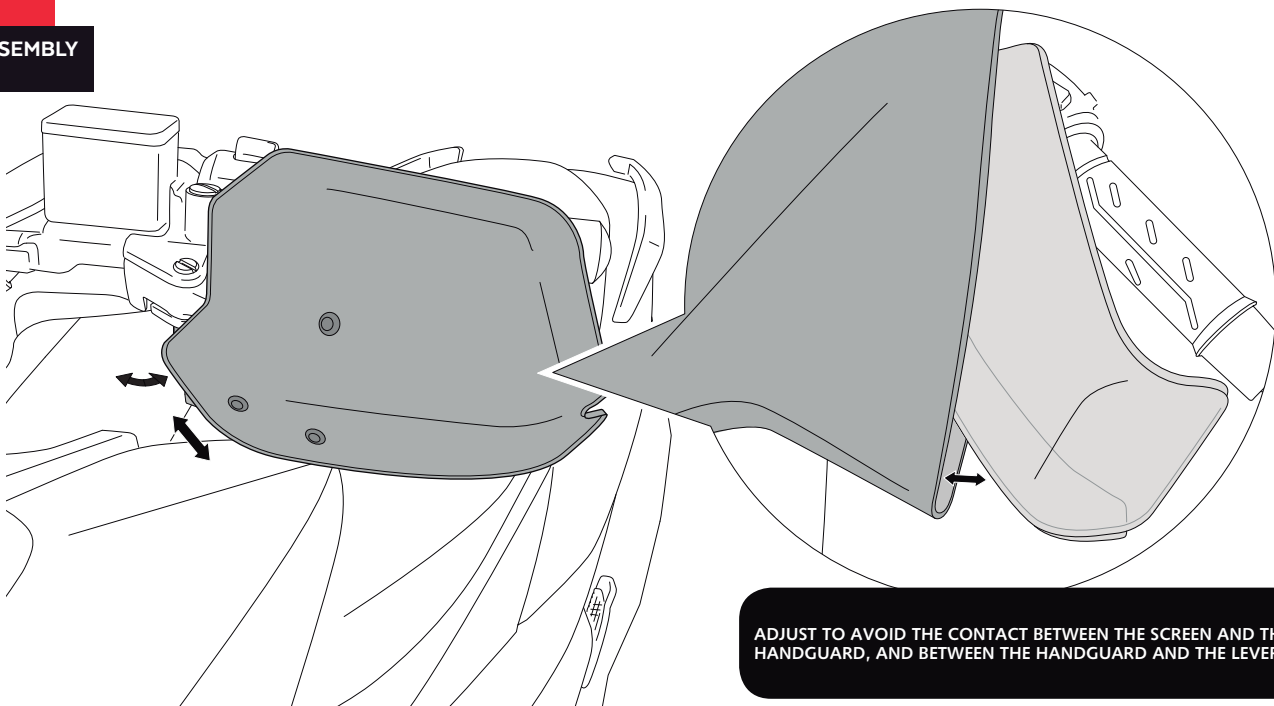
6

ASSEMBLY



7

ASSEMBLY



ADJUST TO AVOID THE CONTACT BETWEEN THE SCREEN AND THE HANDGUARD, AND BETWEEN THE HANDGUARD AND THE LEVER

HONDA PCX 125 '14-

REF 9652

HANDSGUARD FOR



| ID. | * | PART | DESCRIPTION | QTY. | REF.: |
|-----|---|------|---|------|-----------------|
| 1 | | | Right handguard | 1 | 9652F/H/WM3 |
| 2 | | | Left handguard | 1 | 9652F/H/WM3 |
| 3 | | | R1 right metal support | 1 | SOPOR-4P-9-9652 |
| 4 | | | R2 right metal support | 1 | SOPOR-4P-9-9652 |
| 5 | | | L1 left metal support | 1 | SOPOR-4P-9-9652 |
| 6 | | | L2 left metal support | 1 | SOPOR-4P-9-9652 |
| 7 | | | M5x9 special screw Hexagonal lenght 10 (M5x8) BLACK | 2 | TORNI-EM5---761 |
| 8 | | | M5 lock nut | 2 | TUERCA-D982-746 |
| 9 | * | | M6x40 DIN912 allen screw (black) | 2 | TORNI-AD912-058 |
| 10 | * | | M6 DIN125 metallic washer (black) | 2 | ARANDEPD125-054 |
| 11 | * | | M6 DIN912 screw cap | 2 | TAPON-----88 |
| 12 | | | M6x12 special screw Hexagonal lenght 10 (M6x6) BLACK | 2 | TORNI-EM6---801 |
| 13 | * | | M6x12 special screw Hexagonal lenght 20 (M6x12) BLACK | 2 | TORNI-EM6---802 |
| 14 | | | M6x14 DIN933 screw BLACK | 2 | TOZB00M60000107 |
| 15 | | | M6 DIN933 screw cap | 2 | CAPERUZTOM6-063 |
| 16 | | | M6 DIN985 lock nut | 4 | TUZBM6000000024 |
| 17 | | | M6 nut cap | 4 | CAPERUTUM6-21/1 |
| 18 | | | Ø12xØ6x9 silentblock | 6 | AROPASACABLES-1 |
| 19 | | | Ø12xØ6,8x7,3 bush with flange | 6 | CASQUI-1A---750 |
| 20 | | | M5 x16 Ø11 ISO 7380 allen screw | 6 | TORNI-I7380-493 |
| 21 | | | M5 ISO7380 screw cap | 6 | TAPON-----85 |

* NOT USED FOR THIS MODEL

HONDA PCX 125 '14-

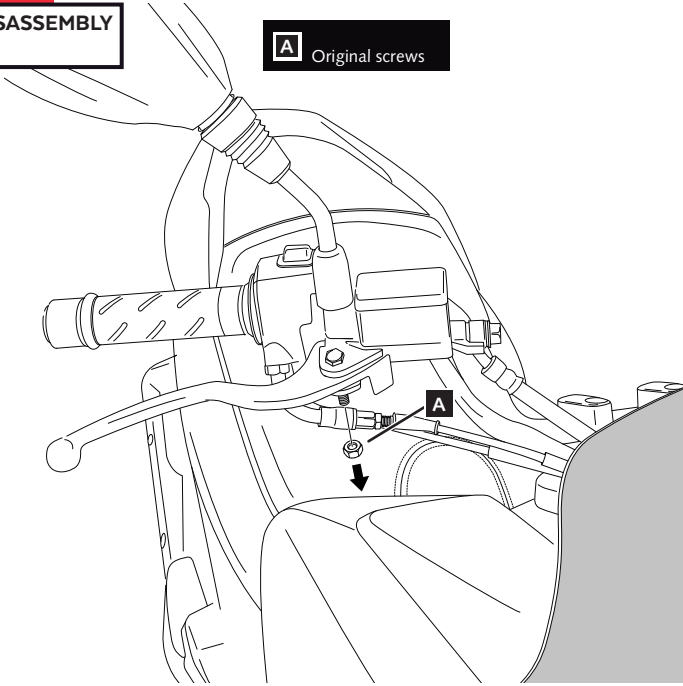
- MOUNTING INSTRUCTIONS -

- RIGHT SIDE -

1

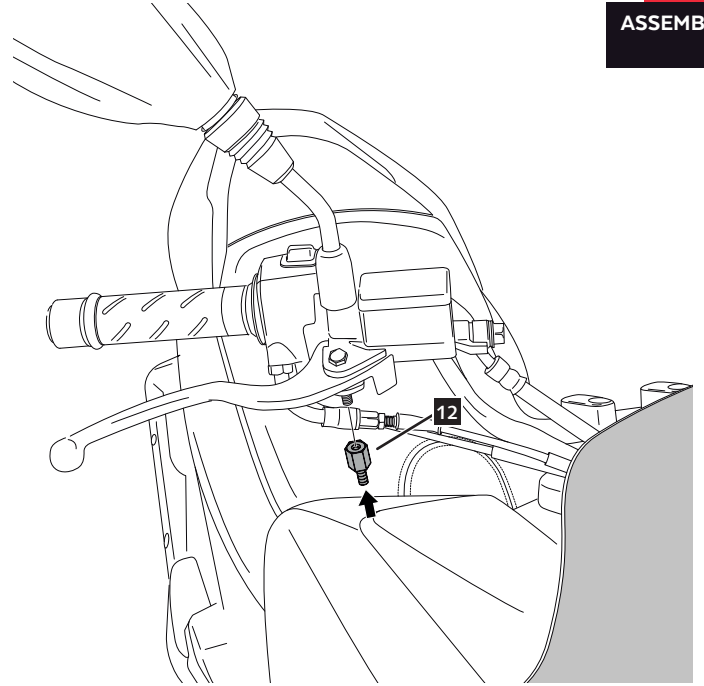
DISASSEMBLY

A Original screws



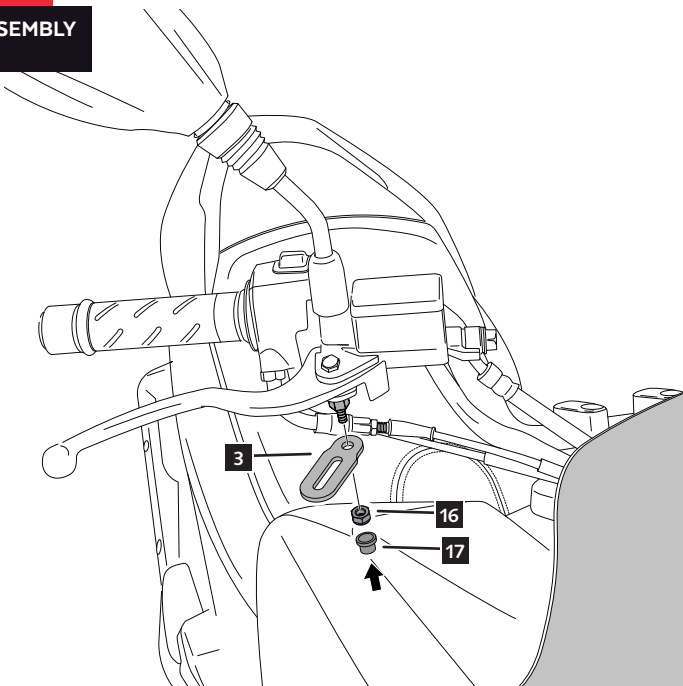
2

ASSEMBLY



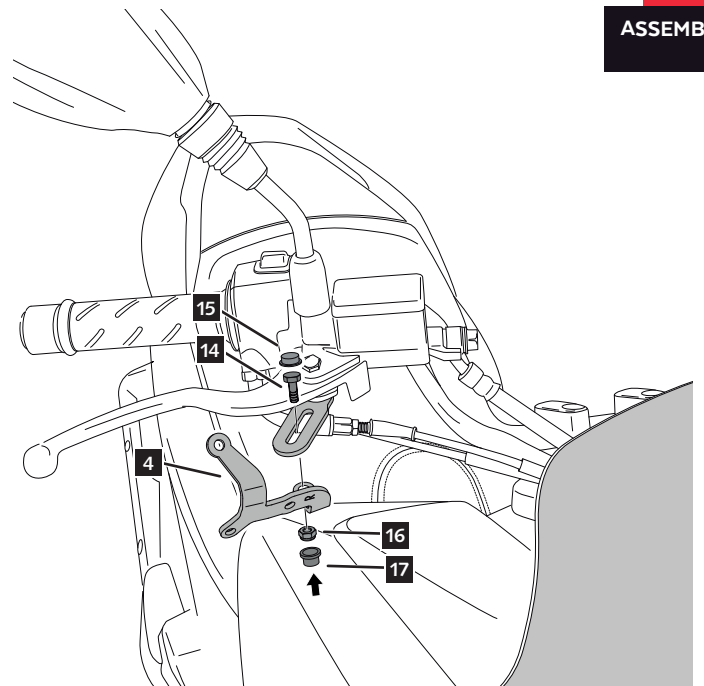
3

ASSEMBLY



4

ASSEMBLY



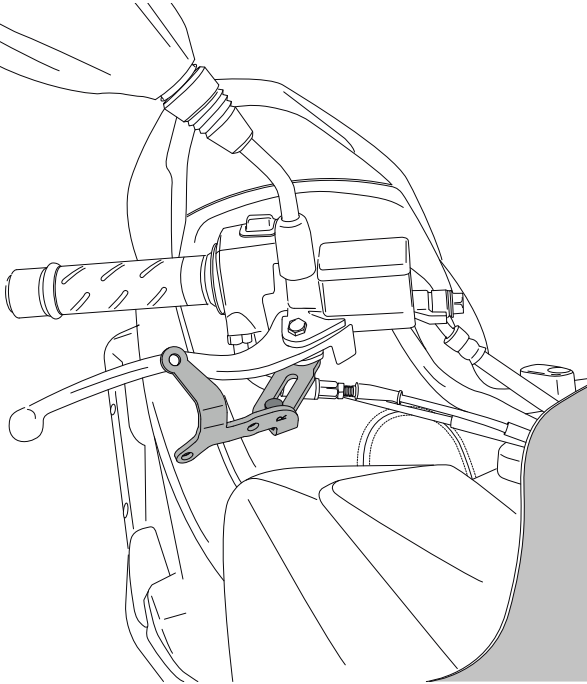
HONDA PCX 125 '14-

MOUNTING INSTRUCTIONS

RIGHT SIDE

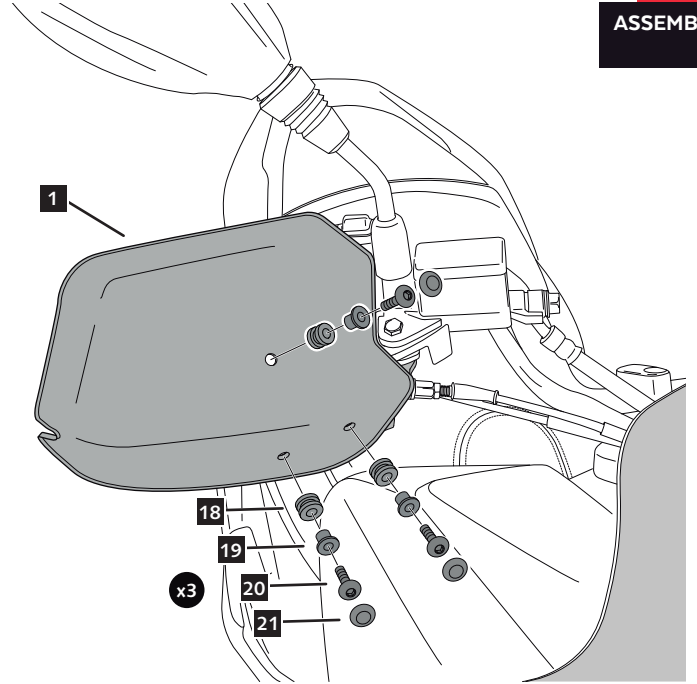
5

ASSEMBLY



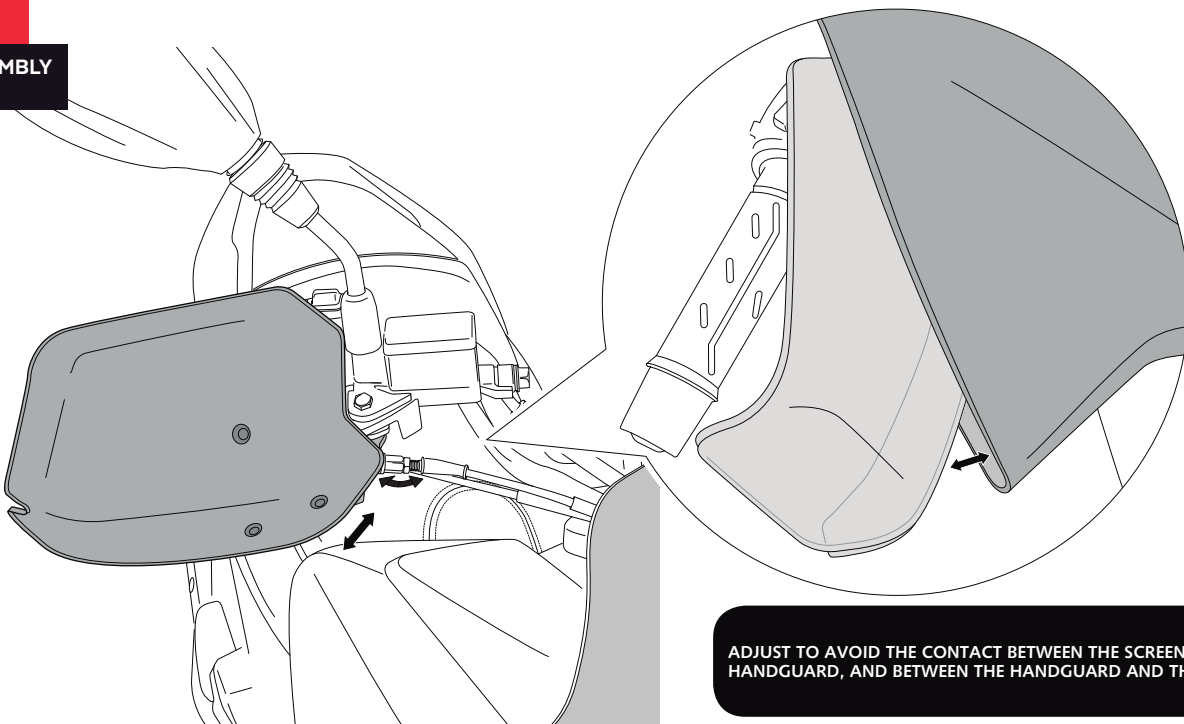
6

ASSEMBLY



7

ASSEMBLY



ADJUST TO AVOID THE CONTACT BETWEEN THE SCREEN AND THE HANDGUARD, AND BETWEEN THE HANDGUARD AND THE LEVER

HONDA PCX 125 '14-

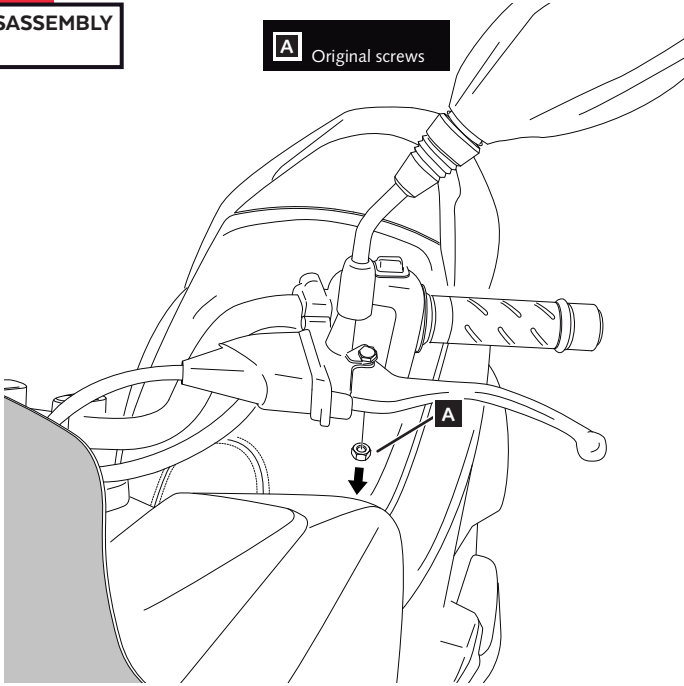
MOUNTING INSTRUCTIONS

LEFT SIDE

1

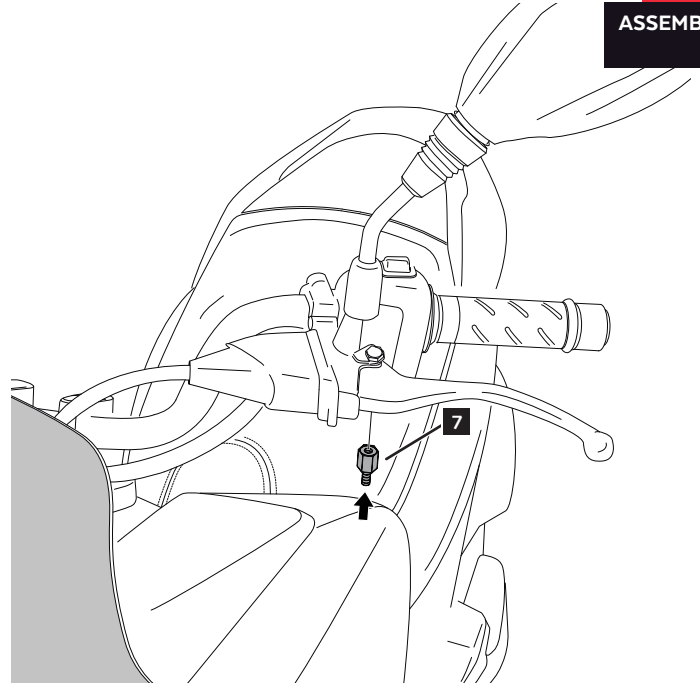
DISASSEMBLY

A Original screws



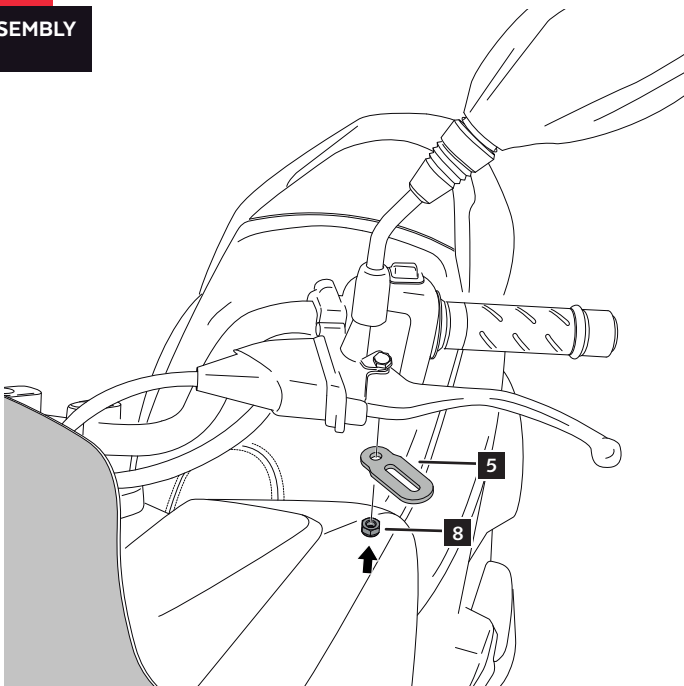
2

ASSEMBLY



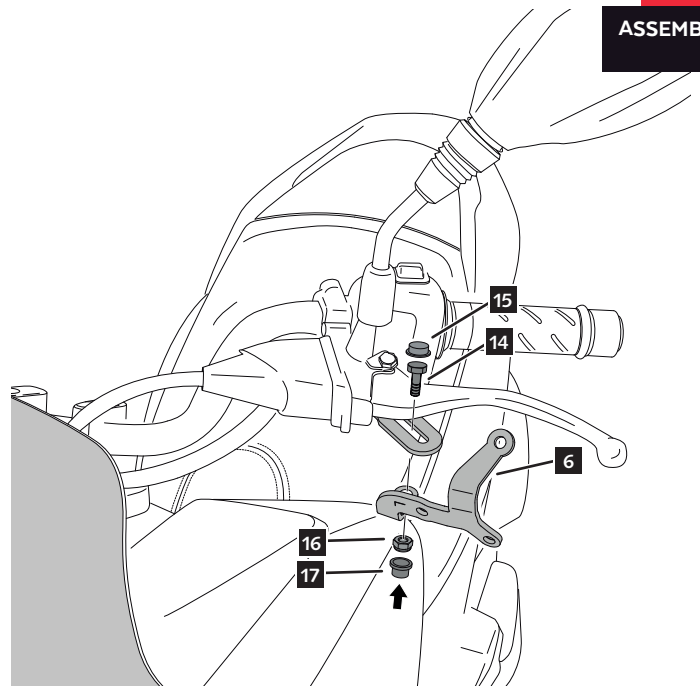
3

ASSEMBLY



4

ASSEMBLY



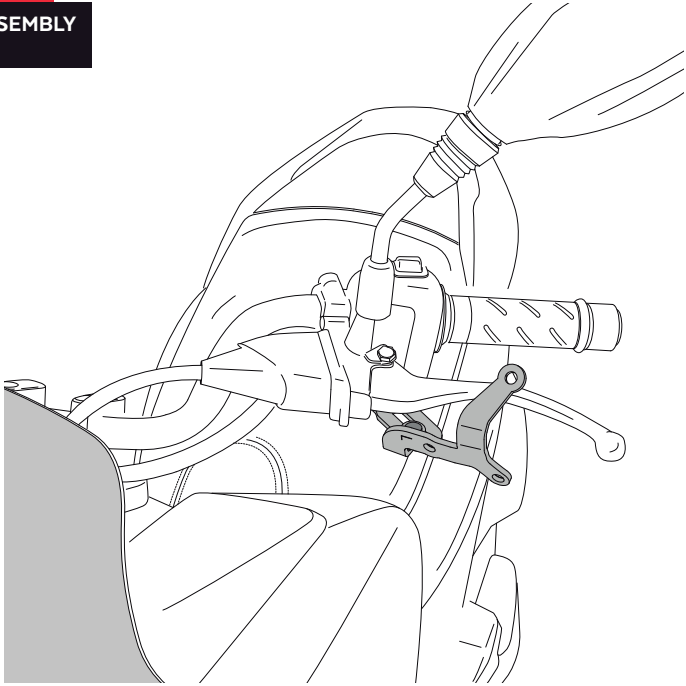
HONDA PCX 125 '14-

MOUNTING INSTRUCTIONS

LEFT SIDE

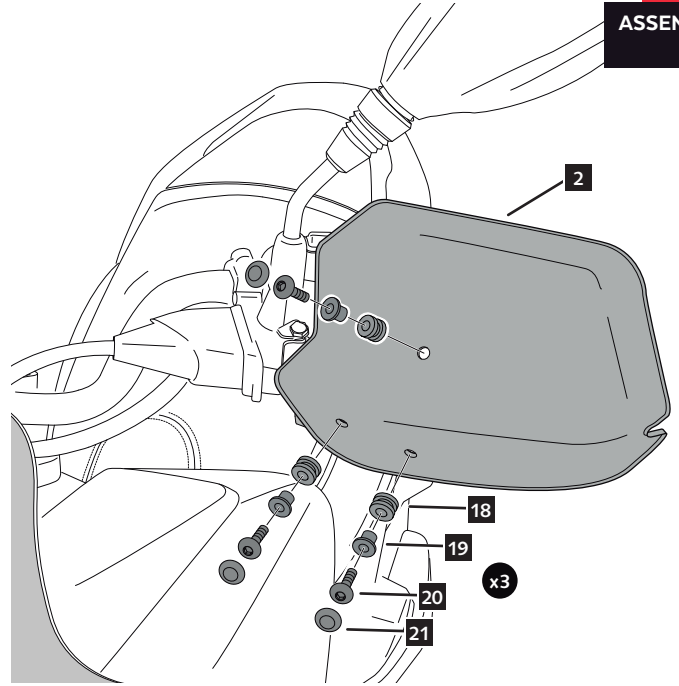
5

ASSEMBLY



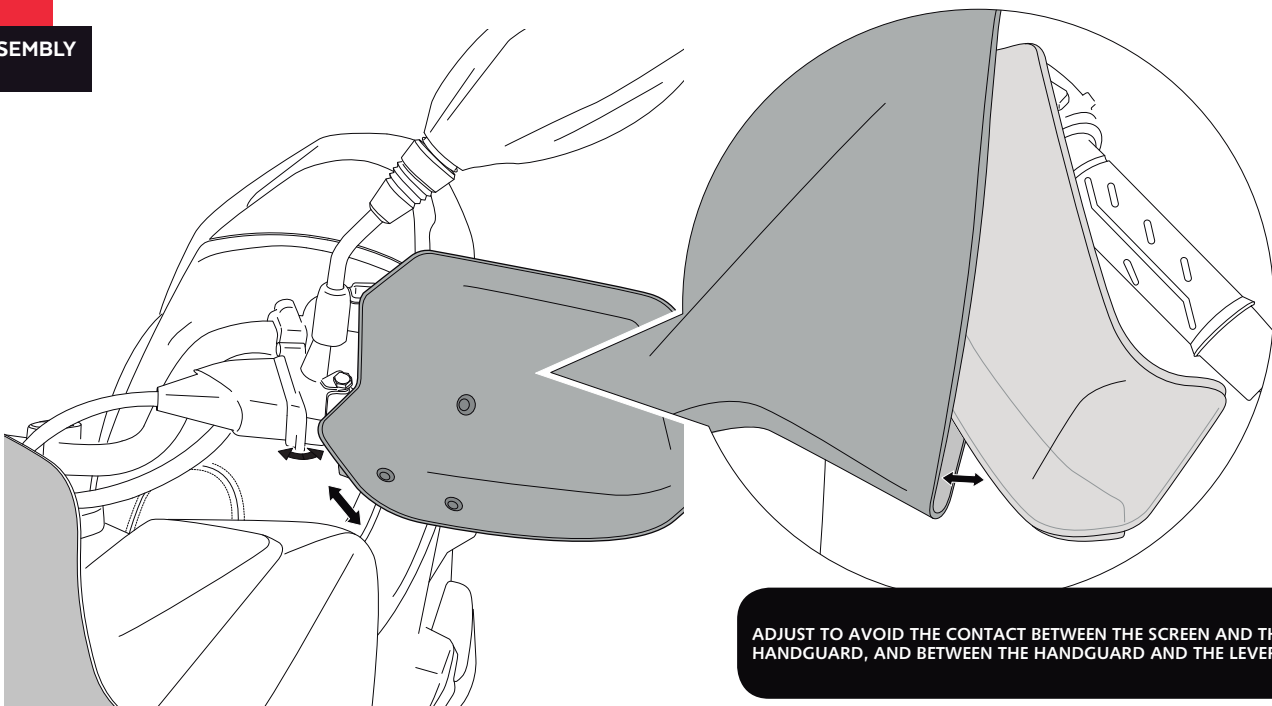
6

ASSEMBLY



7

ASSEMBLY



ADJUST TO AVOID THE CONTACT BETWEEN THE SCREEN AND THE HANDGUARD, AND BETWEEN THE HANDGUARD AND THE LEVER

HONDA X-ADV '17-

REF 9652

HANDSGUARD FOR



1 Person



20 min



INTERMEDIATE



Nº 10

RATCHET



Nº 10

ALLEN



Nº 8

Nº 3

| ID. | * | PART | DESCRIPTION | QTY. | REF.: |
|-----|---|------|--|------|-----------------|
| 1 | | | Right handguard | 1 | 9652F/H/WM3 |
| 2 | | | Left handguard | 1 | 9652F/H/WM3 |
| 3 | | | R1 right metal support | 1 | SOPOR-4P-9-9652 |
| 4 | | | R2 right metal support | 1 | SOPOR-4P-9-9652 |
| 5 | | | L1 left metal support | 1 | SOPOR-4P-9-9652 |
| 6 | | | L2 left metal support | 1 | SOPOR-4P-9-9652 |
| 7 | * | | M5x9 special screw Hexagonal lenght 10 (M5x8) BLACK | 2 | TORNI-EM5---761 |
| 8 | * | | M5 lock nut | 2 | TUERCA-D982-746 |
| 9 | * | | M6x40 DIN912 allen screw (black) | 2 | TORNI-AD912-058 |
| 10 | * | | M6 DIN125 metallic washer (black) | 2 | ARANDEPD125-054 |
| 11 | * | | M6 DIN912 screw cap | 2 | TAPON-----88 |
| 12 | * | | M6x12 special screw Hexagonal lenght 10 (M6x6) BLACK | 2 | TORNI-EM6---801 |
| 13 | | | M6x12 special screw Hexagonal lenght 20 (M6x12) BLACK | 2 | TORNI-EM6---802 |
| 14 | | | M6x14 DIN933 screw BLACK | 2 | TOZB00M60000107 |
| 15 | | | M6 DIN933 screw cap | 2 | CAPERUZTOM6-063 |
| 16 | | | M6 DIN985 lock nut | 4 | TUZBM6000000024 |
| 17 | | | M6 nut cap | 4 | CAPERUTUM6-21/1 |
| 18 | | | Ø12xØ6x9 silentblock | 6 | AROPASACABLES-1 |
| 19 | | | Ø12xØ6,8x7,3 bush with flange | 6 | CASQUI-1A---750 |
| 20 | | | M5 x16 Ø11 ISO 7380 allen screw | 6 | TORNI-I7380-493 |
| 21 | | | M5 ISO7380 screw cap | 6 | TAPON-----85 |

* NOT USED FOR THIS MODEL

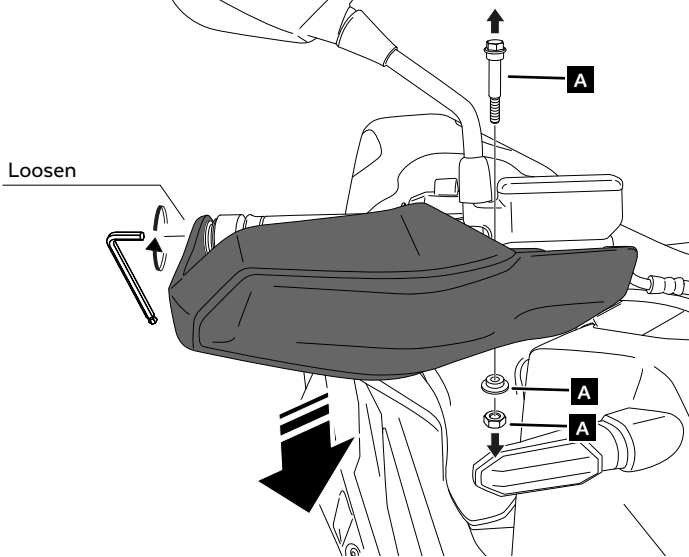
HONDA X-ADV '17-

MOUNTING INSTRUCTIONS

1

DISASSEMBLY

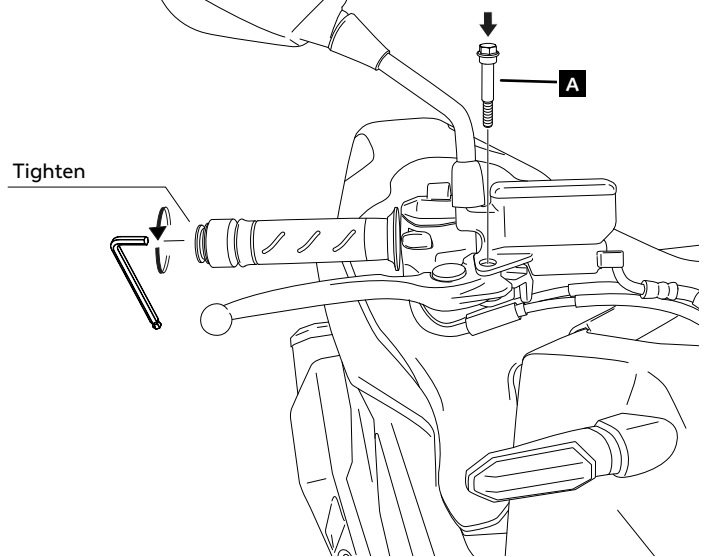
A Original screws



2

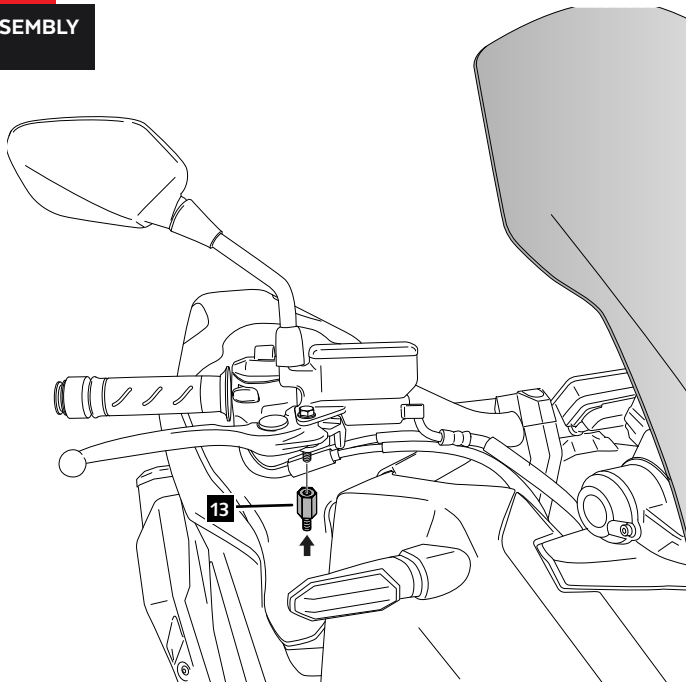
ASSEMBLY

A Original screws



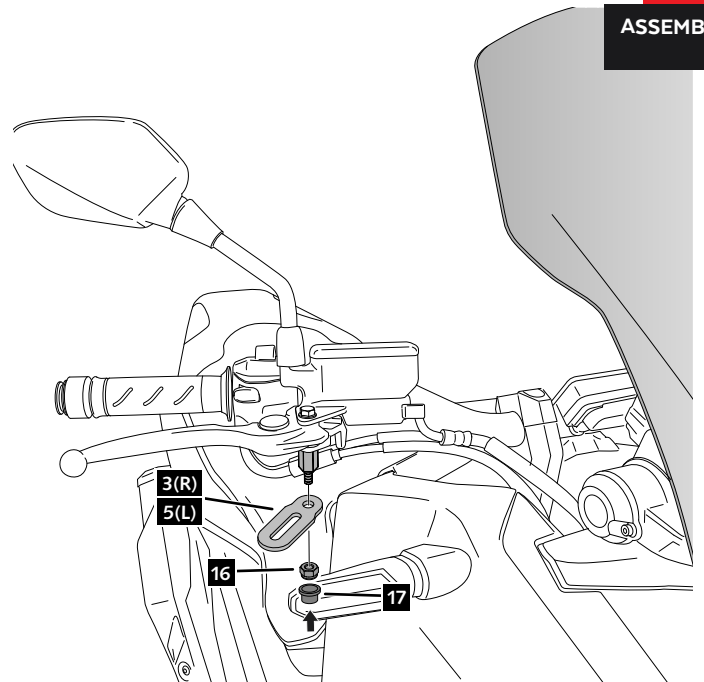
3

ASSEMBLY



4

ASSEMBLY

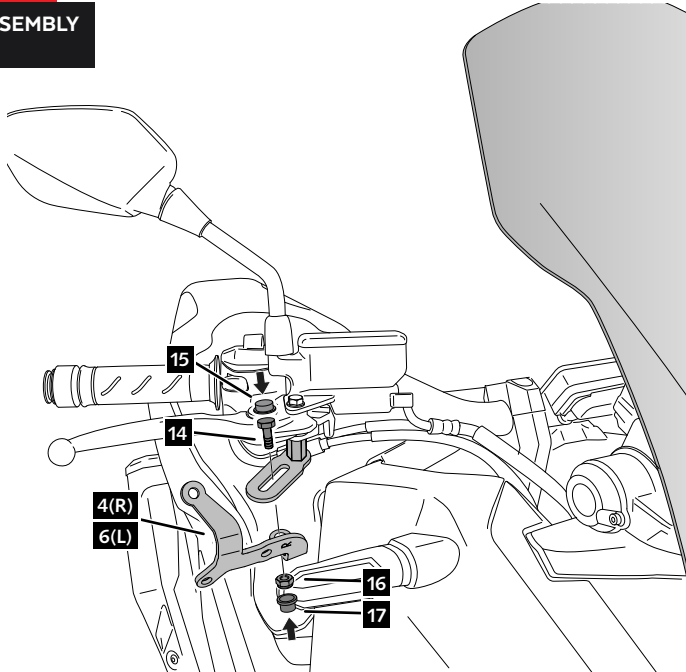


HONDA X-ADV '17-

- MOUNTING INSTRUCTIONS

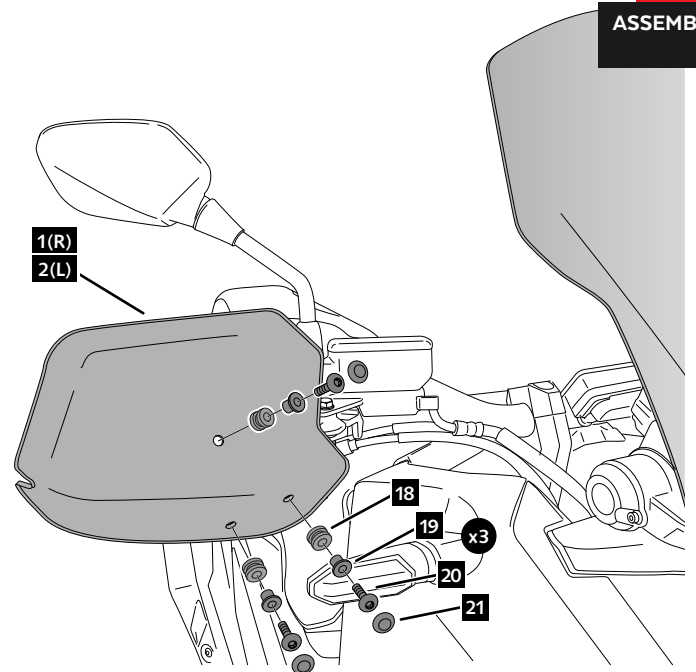
5

ASSEMBLY



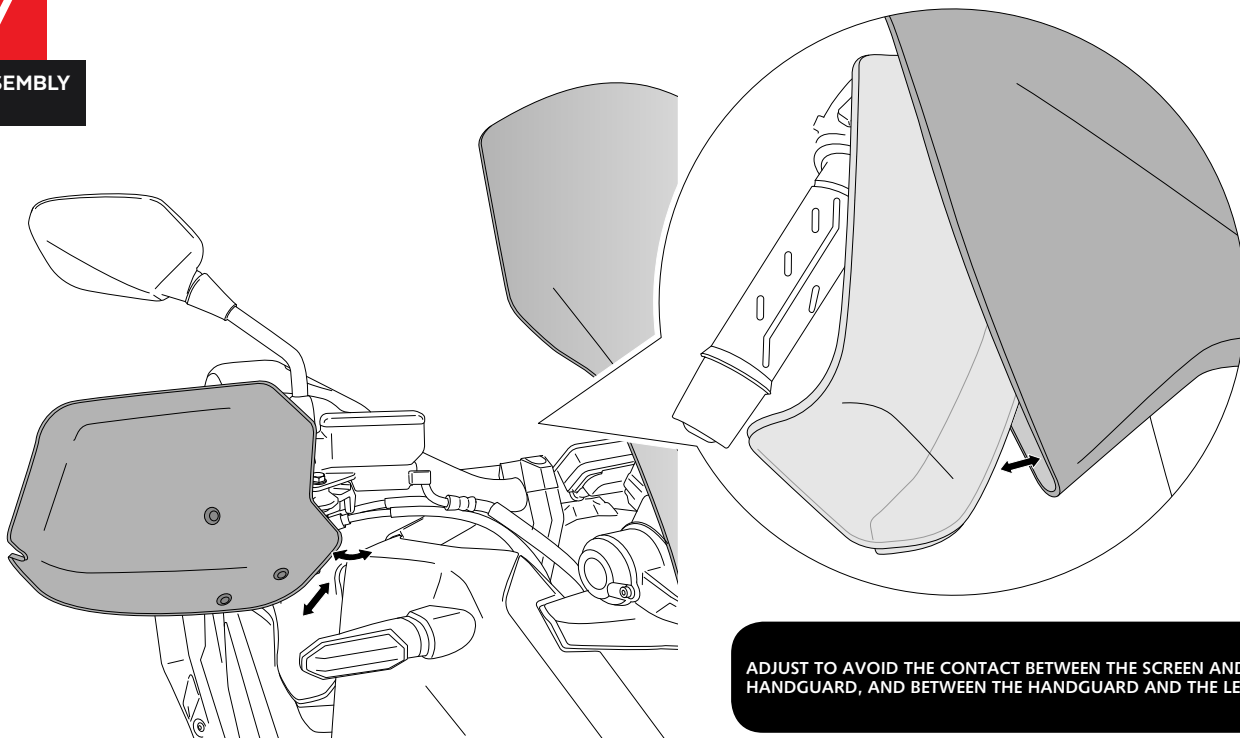
6

ASSEMBLY



7

ASSEMBLY



ADJUST TO AVOID THE CONTACT BETWEEN THE SCREEN AND THE HANDGUARD, AND BETWEEN THE HANDGUARD AND THE LEVER

KYMCO AK-550 '17-

REF 9652

HANDSGUARD FOR



1 Person



20 min



INTERMEDIATE



FIX



N° 10
N° 11

RATCHET



N° 10

ALLEN



N° 3
N° 5

| ID. | * | PART | DESCRIPTION | QTY. | REF.: |
|-----|---|------|--|------|-----------------|
| 1 | | | Right handguard | 1 | 9652F/H/WM3 |
| 2 | | | Left handguard | 1 | 9652F/H/WM3 |
| 3 | | | R1 right metal support | 1 | SOPOR-4P-9-9652 |
| 4 | | | R2 right metal support | 1 | SOPOR-4P-9-9652 |
| 5 | | | L1 left metal support | 1 | SOPOR-4P-9-9652 |
| 6 | | | L2 left metal support | 1 | SOPOR-4P-9-9652 |
| 7 | * | | M5x9 special screw Hexagonal lenght 10 (M5x8) BLACK | 2 | TORNI-EM5---761 |
| 8 | * | | M5 lock nut | 2 | TUERCA-D982-746 |
| 9 | | | M6x40 DIN912 allen screw (black) | 2 | TORNI-AD912-058 |
| 10 | | | M6 DIN125 metallic washer (black) | 2 | ARANDEPD125-054 |
| 11 | | | M6 DIN912 screw cap | 2 | TAPON-----88 |
| 12 | | | M6x12 special screw Hexagonal lenght 10 (M6x6) BLACK | 2 | TORNI-EM6---801 |
| 13 | * | | M6x12 special screw Hexagonal lenght 20 (M6x12) BLACK | 2 | TORNI-EM6---802 |
| 14 | | | M6x14 DIN933 screw BLACK | 2 | TOZB00M60000107 |
| 15 | | | M6 DIN933 screw cap | 2 | CAPERUZTOM6-063 |
| 16 | | | M6 DIN985 lock nut | 4 | TUZBM6000000024 |
| 17 | | | M6 nut cap | 4 | CAPERUTUM6-21/1 |
| 18 | | | Ø12xØ6x9 silentblock | 6 | AROPASACABLES-1 |
| 19 | | | Ø12xØ6,8x7,3 bush with flange | 6 | CASQUI-1A---750 |
| 20 | | | M5 x16 Ø11 ISO 7380 allen screw | 6 | TORNI-I7380-493 |
| 21 | | | M5 ISO7380 screw cap | 6 | TAPON-----85 |

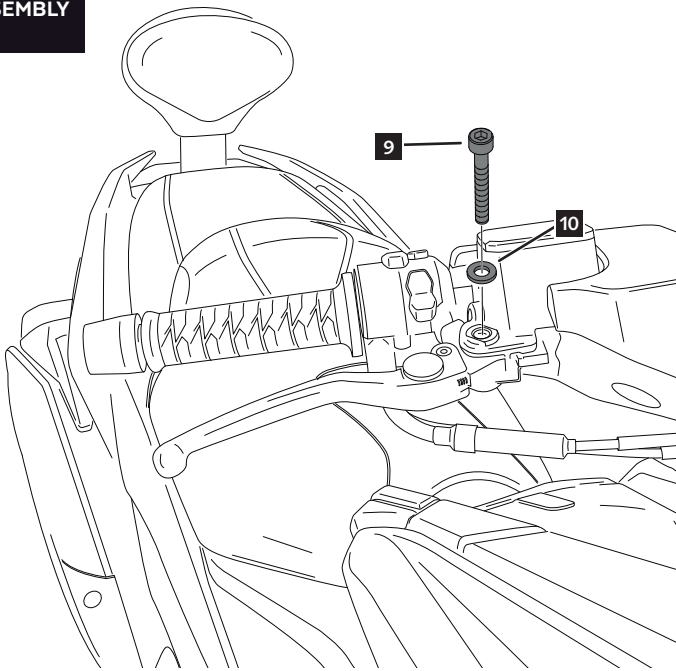
* NOT USED FOR THIS MODEL

KYMCO AK-550 '17-

MOUNTING INSTRUCTIONS

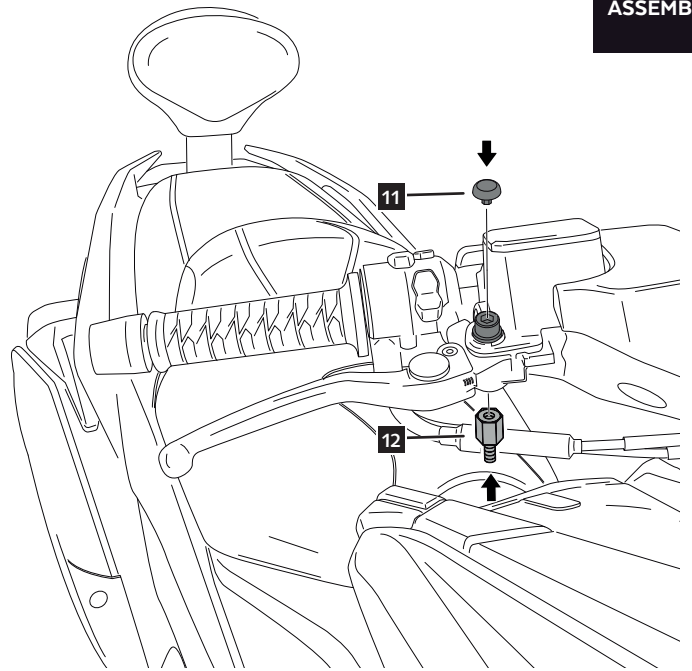
1

ASSEMBLY



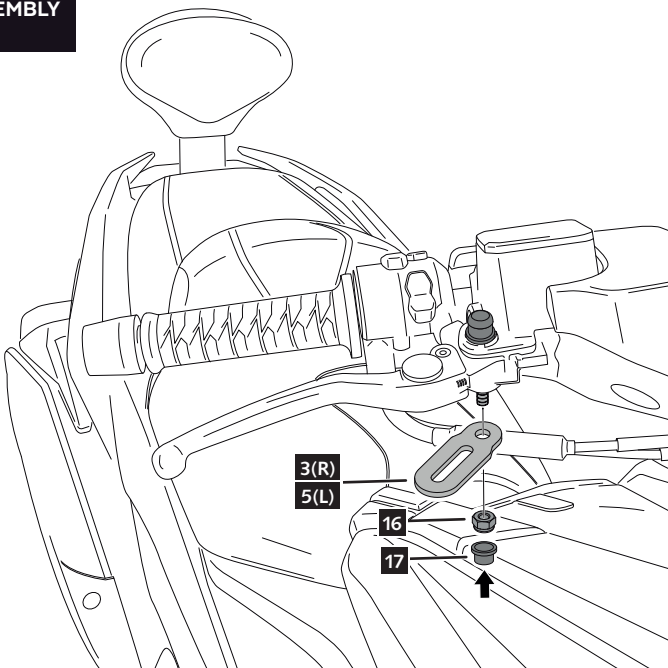
2

ASSEMBLY



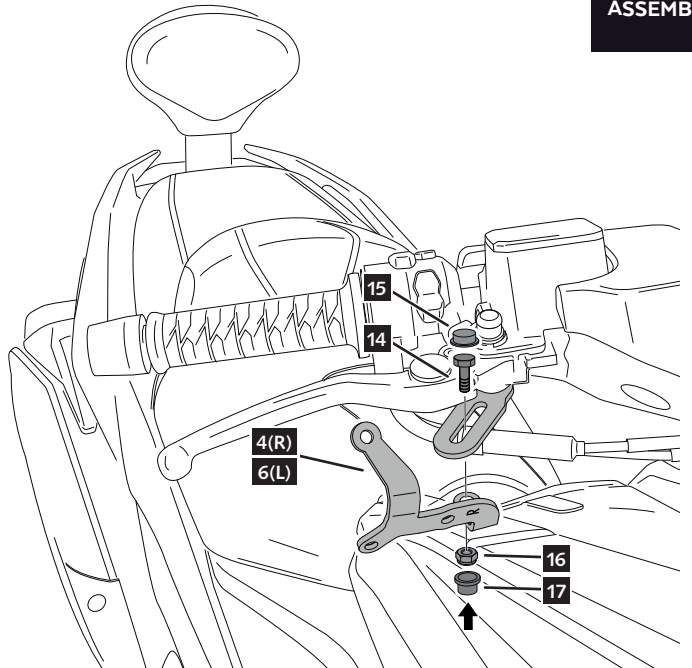
3

ASSEMBLY



4

ASSEMBLY

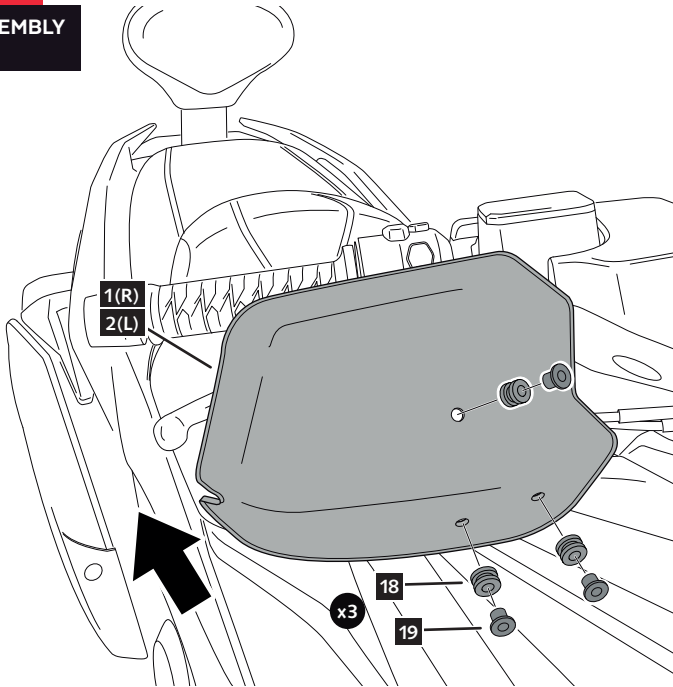


KYMCO AK-550 '17-

MOUNTING INSTRUCTIONS

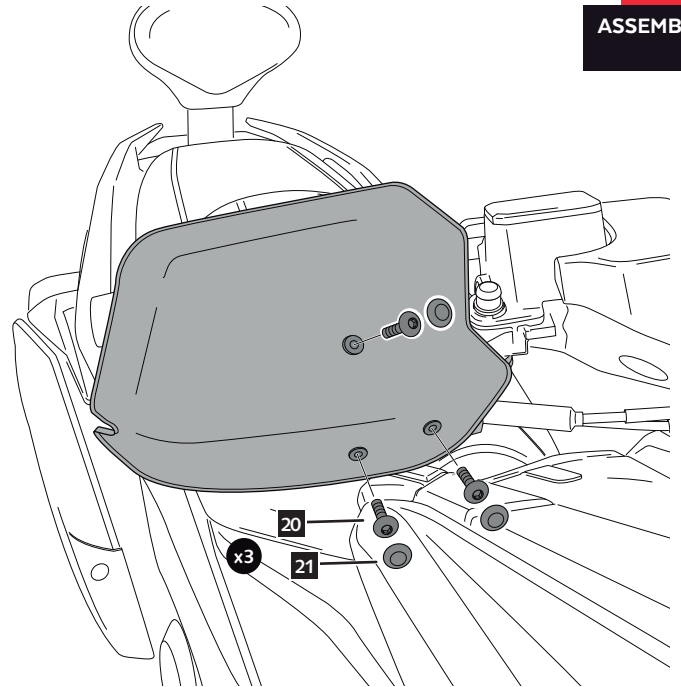
5

ASSEMBLY



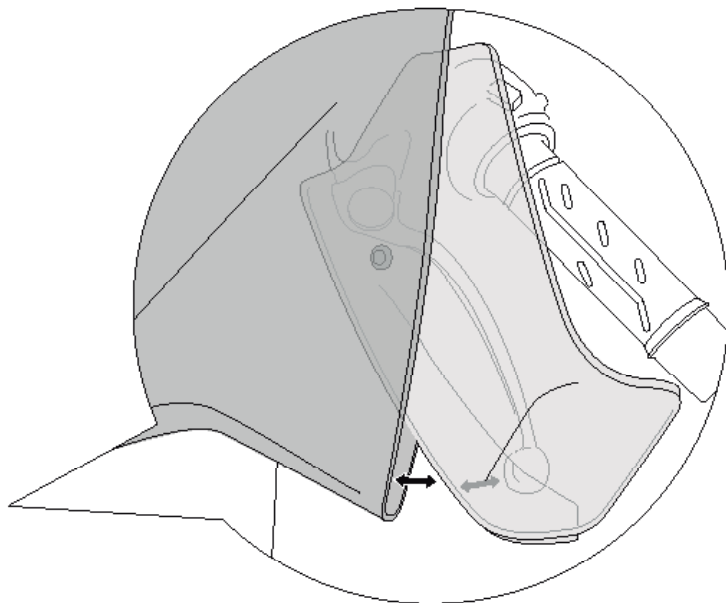
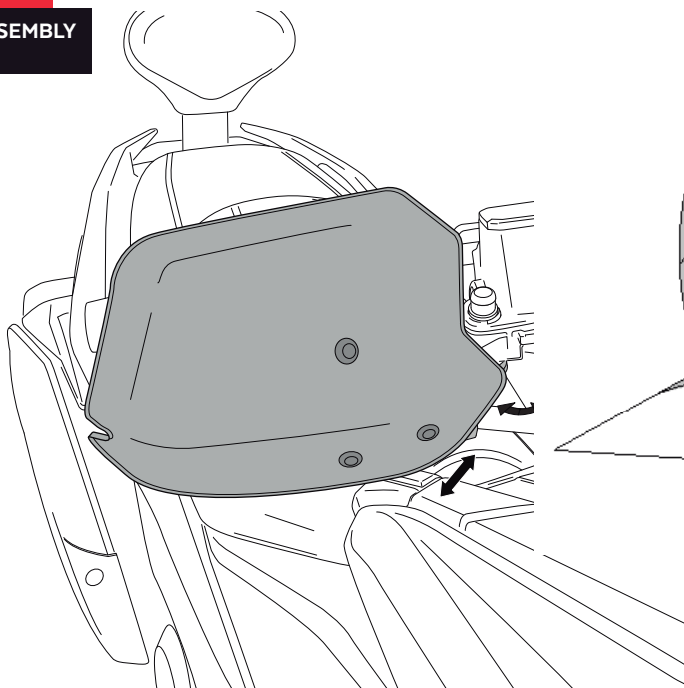
6

ASSEMBLY



7

ASSEMBLY



ADJUST TO AVOID THE CONTACT BETWEEN THE SCREEN AND THE HANDGUARD, AND BETWEEN THE HANDGUARD AND THE LEVER

KYMCO K-XCT 125i-300i '13-

REF 9652

HANDSGUARD FOR



1 Person



20 min



INTERMEDIATE



SCREWDRIVER



RATCHET



N° 10

ALLEN



N° 3

| ID. | * | PART | DESCRIPTION | QTY. | REF.: |
|-----|---|------|--|------|-----------------|
| 1 | | | Right handguard | 1 | 9652F/H/WM3 |
| 2 | | | Left handguard | 1 | 9652F/H/WM3 |
| 3 | | | R1 right metal support | 1 | SOPOR-4P-9-9652 |
| 4 | | | R2 right metal support | 1 | SOPOR-4P-9-9652 |
| 5 | | | L1 left metal support | 1 | SOPOR-4P-9-9652 |
| 6 | | | L2 left metal support | 1 | SOPOR-4P-9-9652 |
| 7 | * | | M5x9 special screw Hexagonal lenght 10 (M5x8) BLACK | 2 | TORNI-EM5---761 |
| 8 | * | | M5 lock nut | 2 | TUERCA-D982-746 |
| 9 | * | | M6x40 DIN912 allen screw (black) | 2 | TORNI-AD912-058 |
| 10 | * | | M6 DIN125 metallic washer (black) | 2 | ARANDEPD125-054 |
| 11 | * | | M6 DIN912 screw cap | 2 | TAPON-----88 |
| 12 | * | | M6x12 special screw Hexagonal lenght 10 (M6x6) BLACK | 2 | TORNI-EM6---801 |
| 13 | * | | M6x12 special screw Hexagonal lenght 20 (M6x12) BLACK | 2 | TORNI-EM6---802 |
| 14 | | | M6x14 DIN933 screw BLACK | 2 | TOZB00M60000107 |
| 15 | | | M6 DIN933 screw cap | 2 | CAPERUZTOM6-063 |
| 16 | | | M6 DIN985 lock nut | 4 | TUZBM6000000024 |
| 17 | | | M6 nut cap | 4 | CAPERUTUM6-21/1 |
| 18 | | | Ø12xØ6x9 silentblock | 6 | AROPASACABLES-1 |
| 19 | | | Ø12xØ6,8x7,3 bush with flange | 6 | CASQUI-1A---750 |
| 20 | | | M5 x16 Ø11 ISO 7380 allen screw | 6 | TORNI-I7380-493 |
| 21 | | | M5 ISO7380 screw cap | 6 | TAPON-----85 |

* NOT USED FOR THIS MODEL

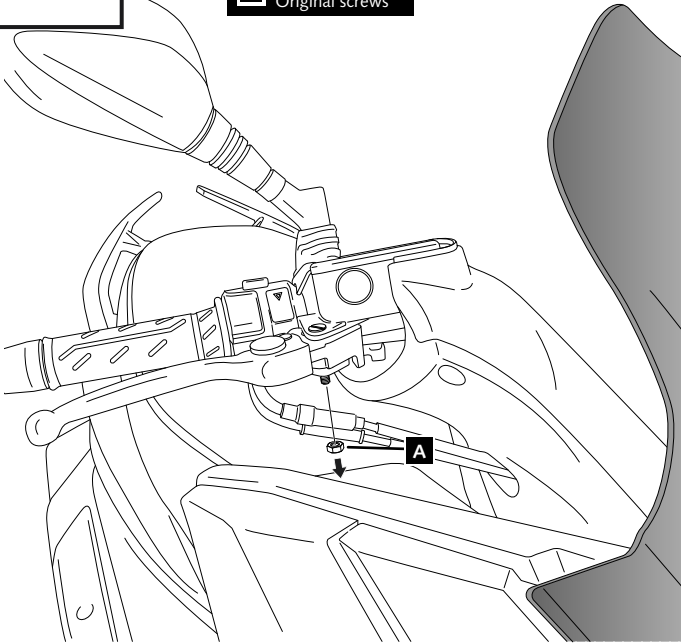
KYMCO K-XCT 125i-300i '13-

MOUNTING INSTRUCTIONS

1

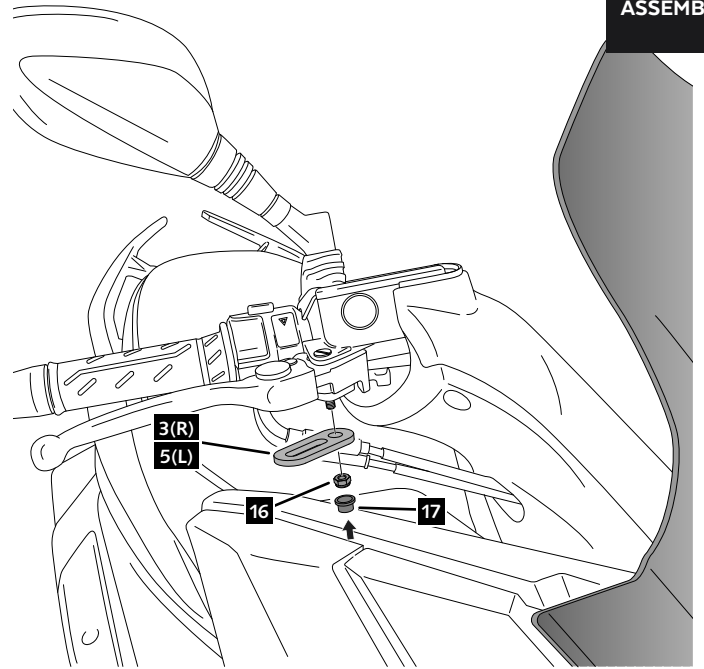
DISASSEMBLY

A Original screws



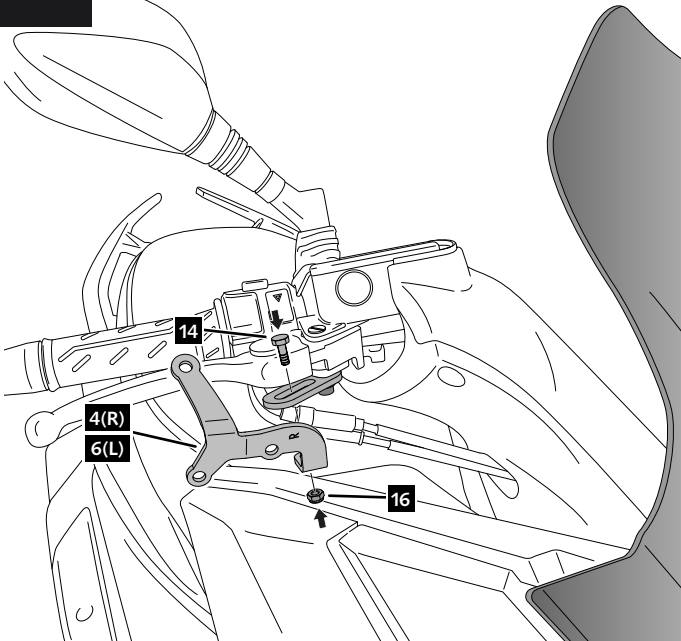
2

ASSEMBLY



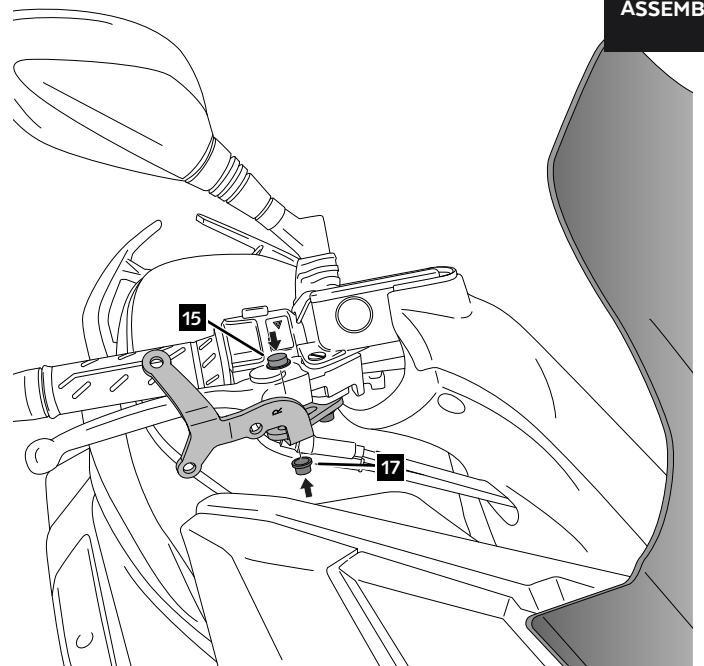
3

ASSEMBLY



4

ASSEMBLY

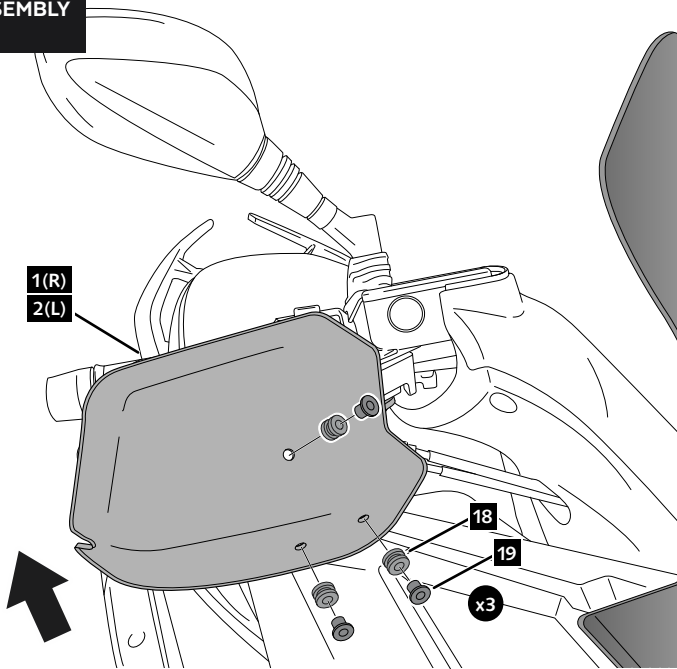


KYMCO K-XCT 125i-300i '13-

MOUNTING INSTRUCTIONS

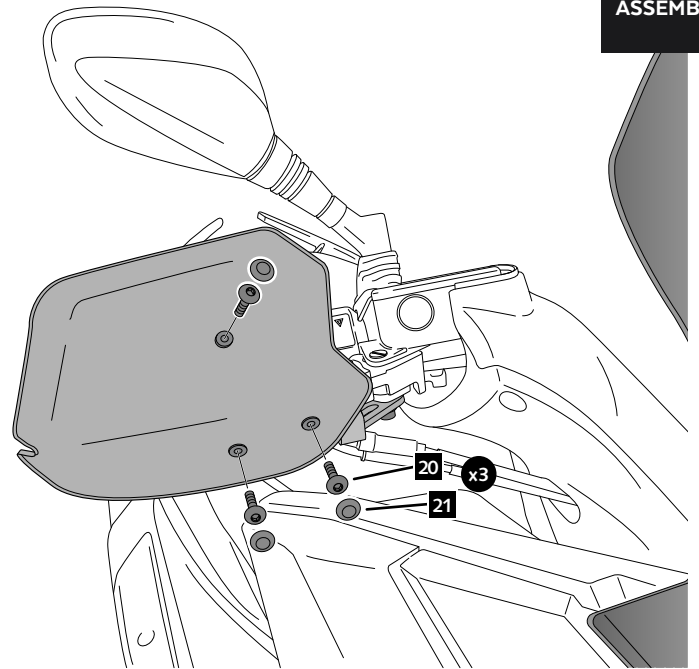
5

ASSEMBLY



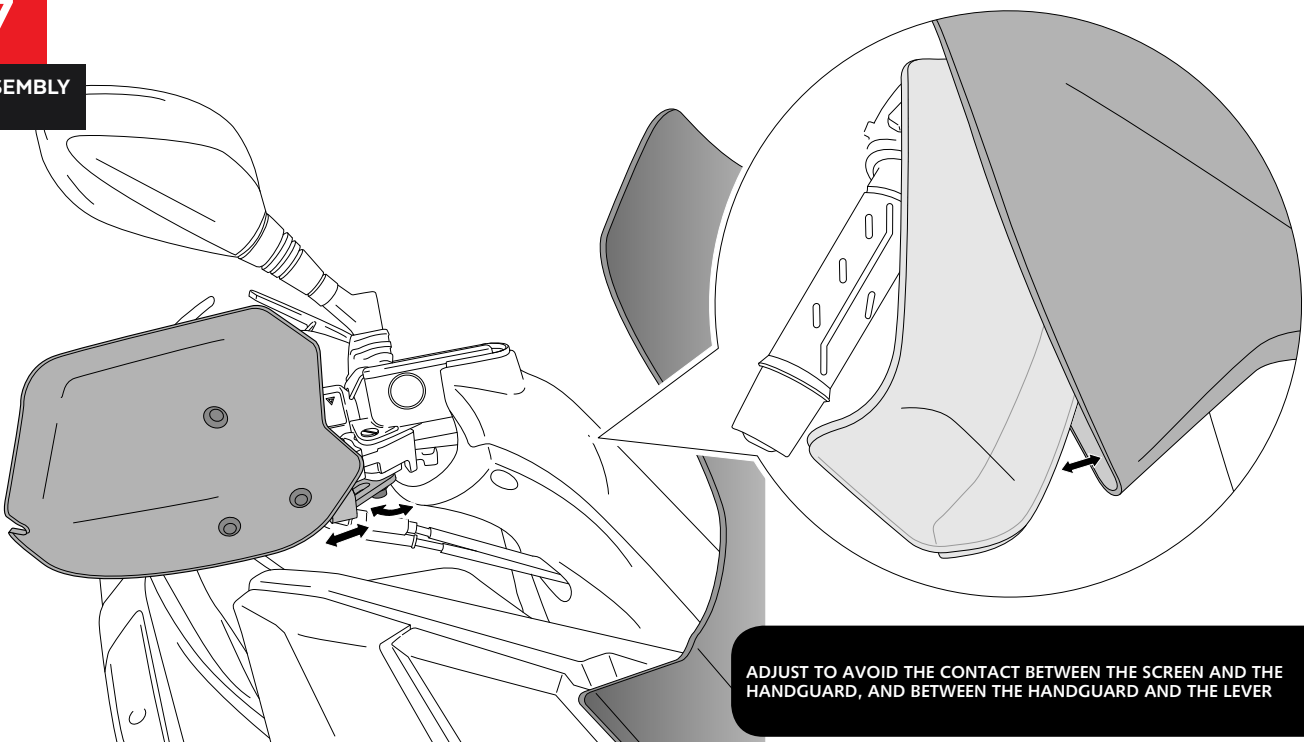
6

ASSEMBLY



7

ASSEMBLY



ADJUST TO AVOID THE CONTACT BETWEEN THE SCREEN AND THE HANDGUARD, AND BETWEEN THE HANDGUARD AND THE LEVER

**KYMCO NEW DOWNTOWN 125i-350i '15-
NEW SUPERDINK 125i-350i '15-**

REF 9652

HANDSGUARD FOR



SCREWDRIVER



FIX



N° 10

RATCHET



N° 10

ALLEN



N° 3

| ID. | * | PART | DESCRIPTION | QTY. | REF.: |
|-----|---|------|---|------|-----------------|
| 1 | | | Right handguard | 1 | 9652F/H/WM3 |
| 2 | | | Left handguard | 1 | 9652F/H/WM3 |
| 3 | | | R1 right metal support | 1 | SOPOR-4P-9-9652 |
| 4 | | | R2 right metal support | 1 | SOPOR-4P-9-9652 |
| 5 | | | L1 left metal support | 1 | SOPOR-4P-9-9652 |
| 6 | | | L2 left metal support | 1 | SOPOR-4P-9-9652 |
| 7 | * | | M5x9 special screw Hexagonal lenght 10 (M5x8) BLACK | 2 | TORNI-EM5---761 |
| 8 | * | | M5 lock nut | 2 | TUERCA-D982-746 |
| 9 | * | | M6x40 DIN912 allen screw (black) | 2 | TORNI-AD912-058 |
| 10 | * | | M6 DIN125 metallic washer (black) | 2 | ARANDEPD125-054 |
| 11 | * | | M6 DIN912 screw cap | 2 | TAPON-----88 |
| 12 | | | M6x12 special screw Hexagonal lenght 10 (M6x6) BLACK | 2 | TORNI-EM6---801 |
| 13 | * | | M6x12 special screw Hexagonal lenght 20 (M6x12) BLACK | 2 | TORNI-EM6---802 |
| 14 | | | M6x14 DIN933 screw BLACK | 2 | TOZB00M60000107 |
| 15 | | | M6 DIN933 screw cap | 2 | CAPERUZTOM6-063 |
| 16 | | | M6 DIN985 lock nut | 4 | TUZBM6000000024 |
| 17 | | | M6 nut cap | 4 | CAPERUTUM6-21/1 |
| 18 | | | Ø12xØ6x9 silentblock | 6 | AROPASACABLES-1 |
| 19 | | | Ø12xØ6,8x7,3 bush with flange | 6 | CASQUI-1A---750 |
| 20 | | | M5 x16 Ø11 ISO 7380 allen screw | 6 | TORNI-I7380-493 |
| 21 | | | M5 ISO7380 screw cap | 6 | TAPON-----85 |

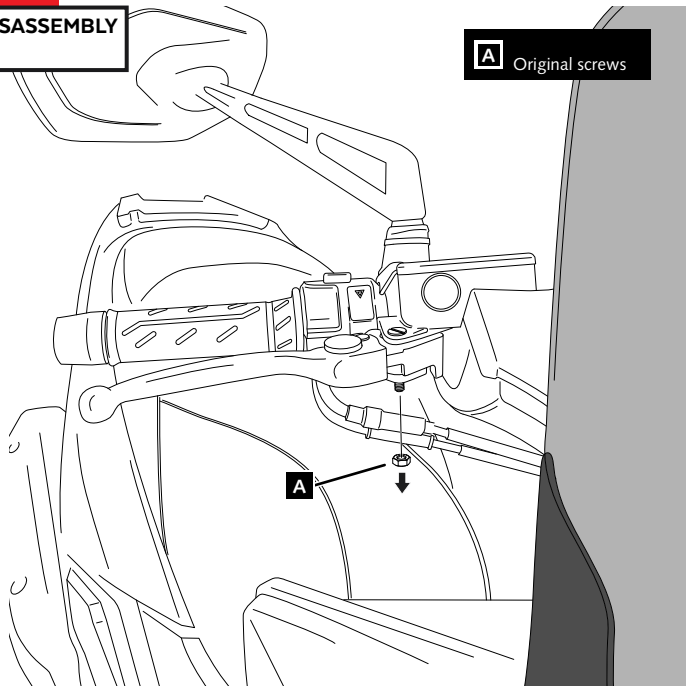
* NOT USED FOR THIS MODEL

KYMCO NEW DOWNTOWN 125i-350i '15-
NEW SUPERDINK 125i-350i '15-

MOUNTING INSTRUCTIONS

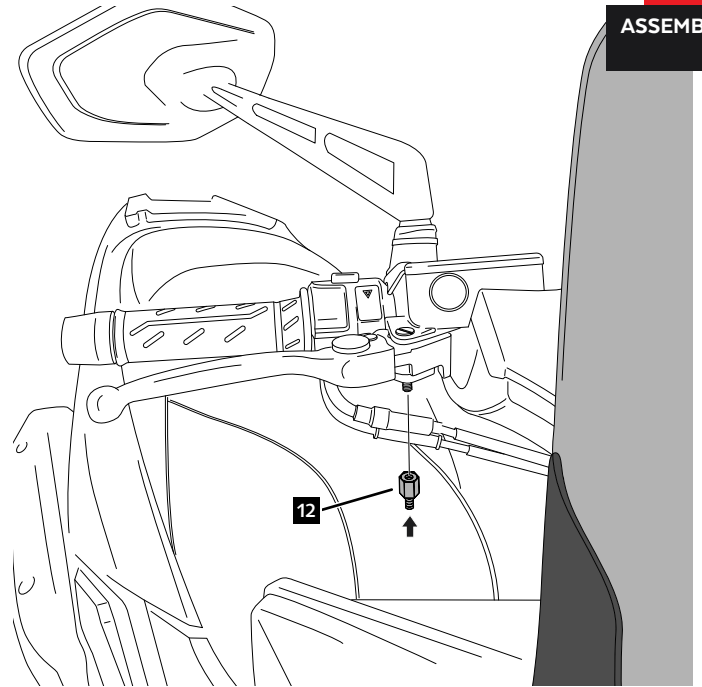
1

DISASSEMBLY



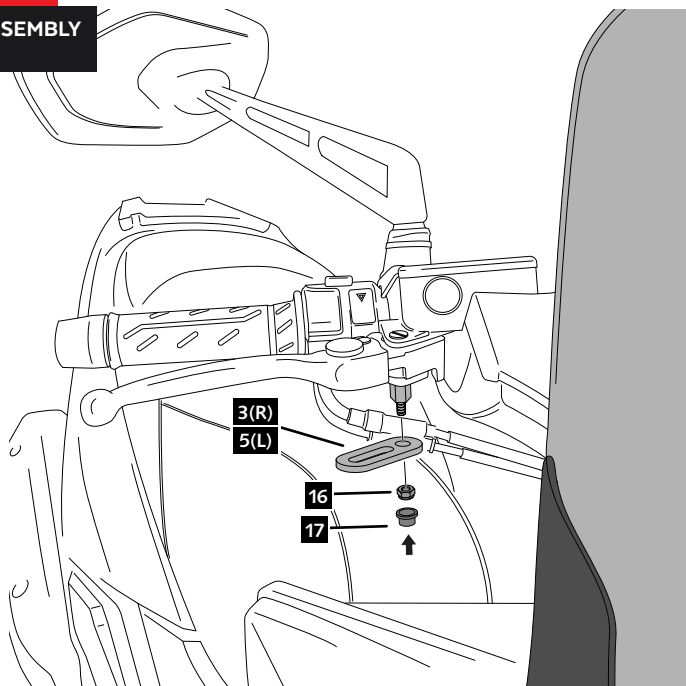
2

ASSEMBLY



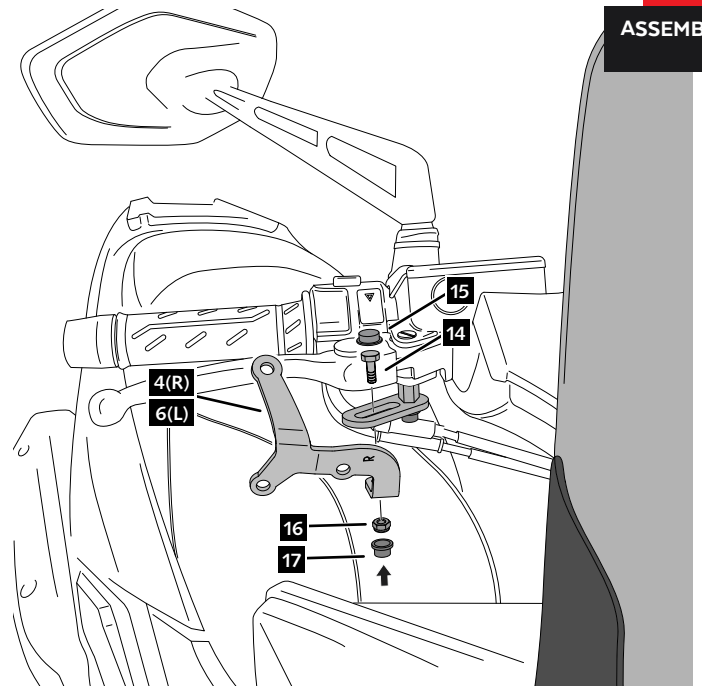
3

ASSEMBLY



4

ASSEMBLY

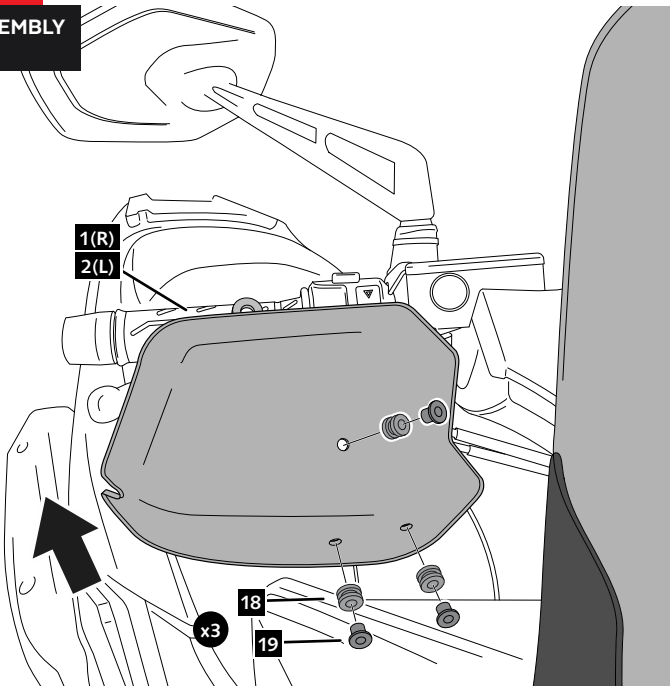


KYMCO NEW DOWNTOWN 125i-350i '15-
NEW SUPERDINK 125i-350i '15-

MOUNTING INSTRUCTIONS

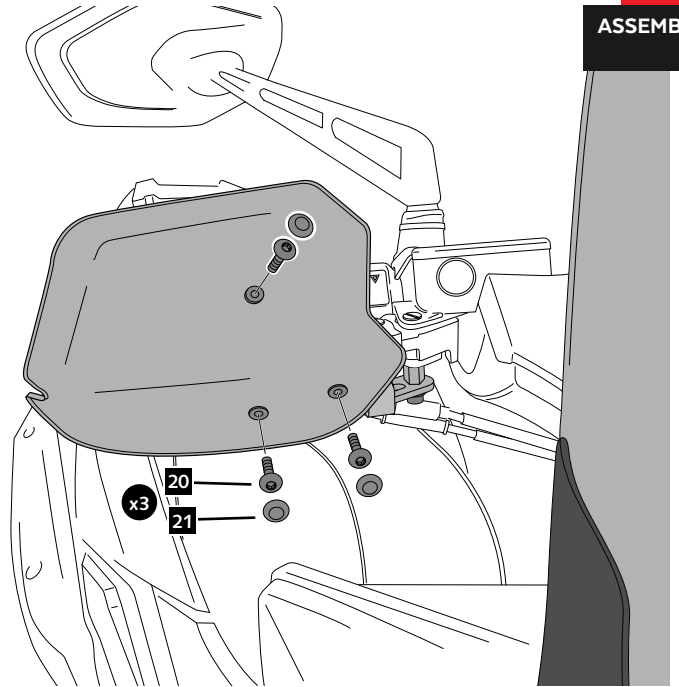
5

ASSEMBLY



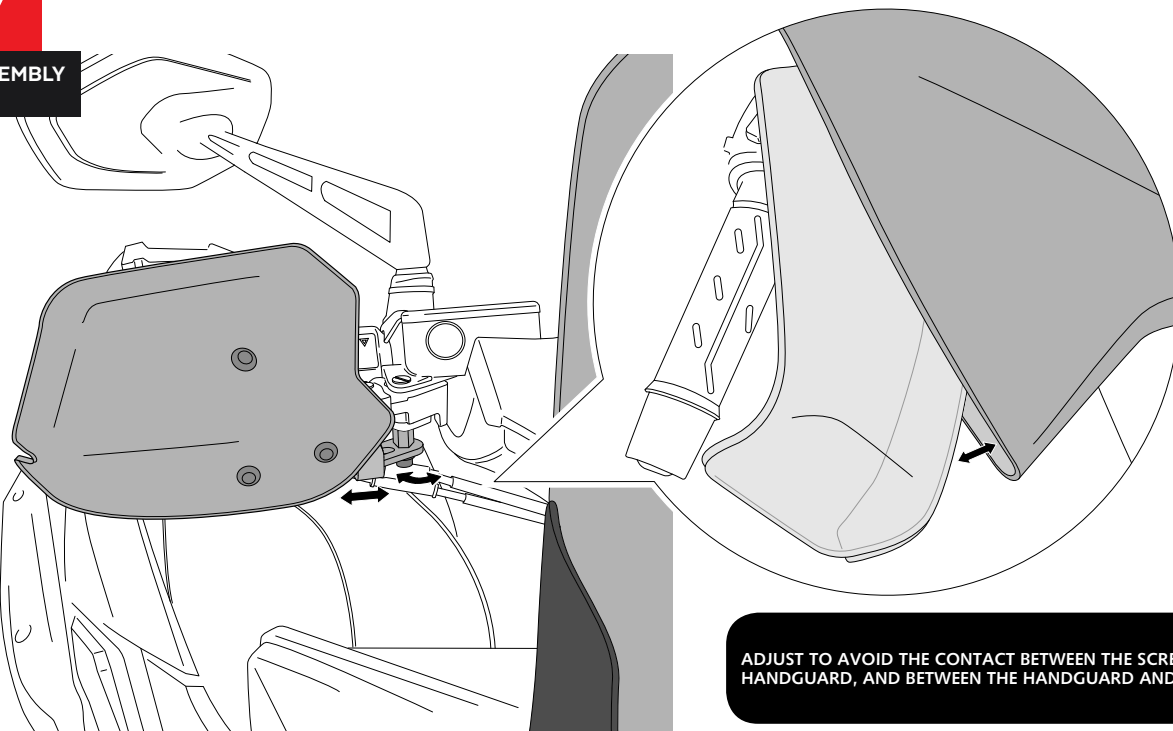
6

ASSEMBLY



7

ASSEMBLY



ADJUST TO AVOID THE CONTACT BETWEEN THE SCREEN AND THE
HANDGUARD, AND BETWEEN THE HANDGUARD AND THE LEVER

KYMCO SUPERDINK 125i/300i KYMCO DOWNTOWN 125i/300i
KYMCO X-TOWN 125/300 '16- KYMCO NEW GRAND DINK 300 '16-

REF 9652

HANDSGUARD FOR



1 Person



20 min



INTERMEDIATE



SCREWDRIVER



FIX



Nº 10

RATCHET



Nº 10

ALLEN



Nº 3

| ID. | * | PART | DESCRIPTION | QTY. | REF.: |
|-----|---|------|---|------|-----------------|
| 1 | | | Right handguard | 1 | 9652F/H/WM3 |
| 2 | | | Left handguard | 1 | 9652F/H/WM3 |
| 3 | | | R1 right metal support | 1 | SOPOR-4P-9-9652 |
| 4 | | | R2 right metal support | 1 | SOPOR-4P-9-9652 |
| 5 | | | L1 left metal support | 1 | SOPOR-4P-9-9652 |
| 6 | | | L2 left metal support | 1 | SOPOR-4P-9-9652 |
| 7 | * | | M5x9 special screw Hexagonal lenght 10 (M5x8) BLACK | 2 | TORNI-EM5---761 |
| 8 | * | | M5 lock nut | 2 | TUERCA-D982-746 |
| 9 | * | | M6x40 DIN912 allen screw (black) | 2 | TORNI-AD912-058 |
| 10 | * | | M6 DIN125 metallic washer (black) | 2 | ARANDEPD125-054 |
| 11 | * | | M6 DIN912 screw cap | 2 | TAPON-----88 |
| 12 | | | M6x12 special screw Hexagonal lenght 10 (M6x6) BLACK | 2 | TORNI-EM6---801 |
| 13 | * | | M6x12 special screw Hexagonal lenght 20 (M6x12) BLACK | 2 | TORNI-EM6---802 |
| 14 | | | M6x14 DIN933 screw BLACK | 2 | TOZB00M60000107 |
| 15 | | | M6 DIN933 screw cap | 2 | CAPERUZTOM6-063 |
| 16 | | | M6 DIN985 lock nut | 4 | TUZBM6000000024 |
| 17 | | | M6 nut cap | 4 | CAPERUTUM6-21/1 |
| 18 | | | Ø12xØ6x9 silentblock | 6 | AROPASACABLES-1 |
| 19 | | | Ø12xØ6,8x7,3 bush with flange | 6 | CASQUI-1A---750 |
| 20 | | | M5 x16 Ø11 ISO 7380 allen screw | 6 | TORNI-I7380-493 |
| 21 | | | M5 ISO7380 screw cap | 6 | TAPON-----85 |

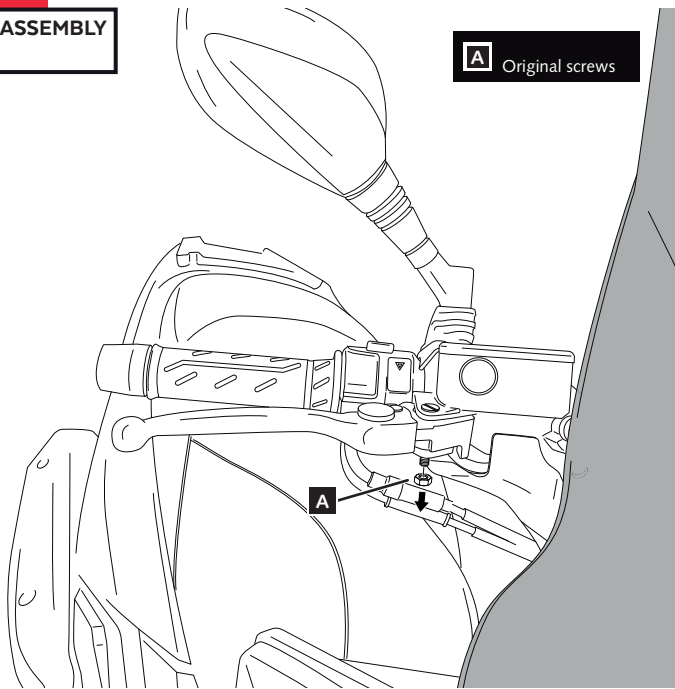
* NOT USED FOR THIS MODEL

KYMC O SUPERDINK 125i/300i KYMC O DOWNTOWN 125i/300i
KYMC O X-TOWN 125/300 '16- KYMC O NEW GRAND DINK 300 '16-

MOUNTING INSTRUCTIONS

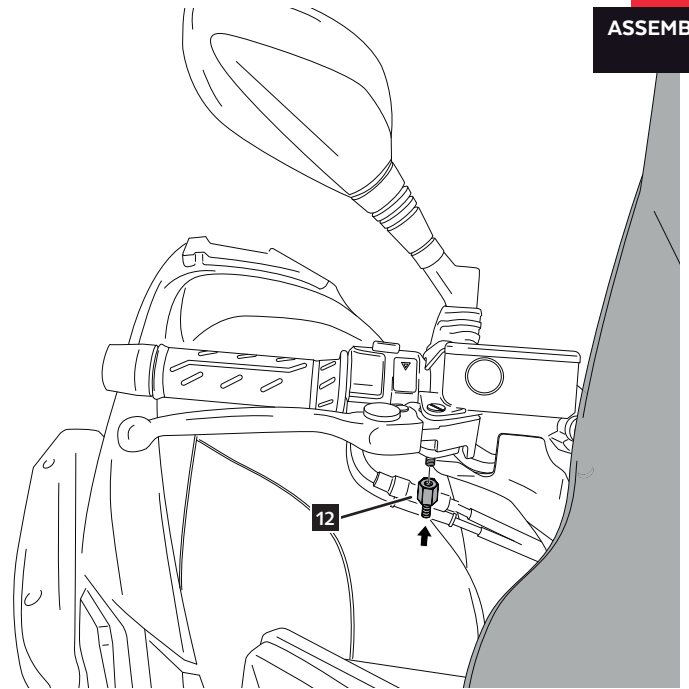
1

DISASSEMBLY



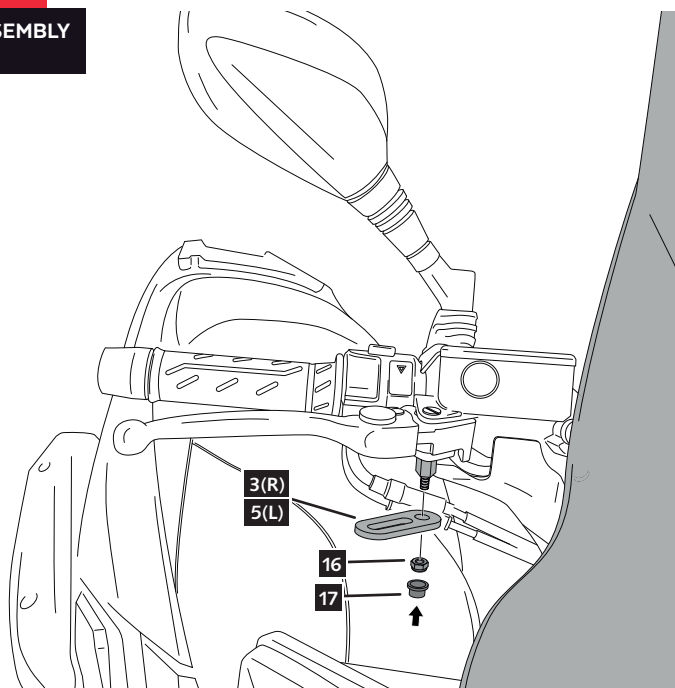
2

ASSEMBLY



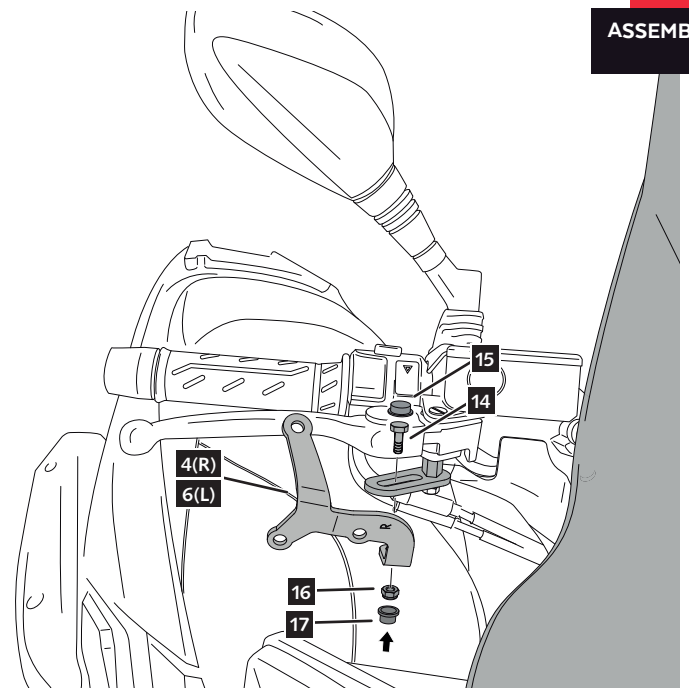
3

ASSEMBLY



4

ASSEMBLY

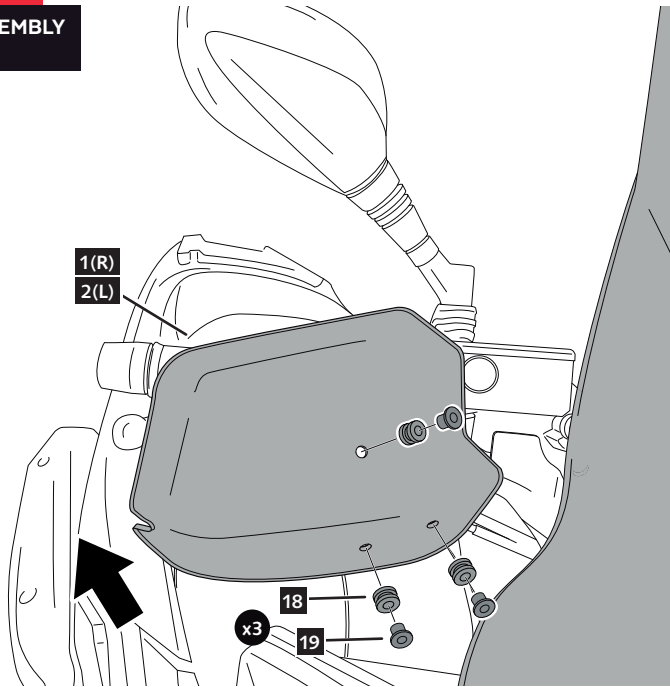


KYMC0 SUPERDINK 125i/300i KYMC0 DOWNTOWN 125i/300i
KYMC0 X-TOWN 125/300 '16- KYMC0 NEW GRAND DINK 300 '16-

MOUNTING INSTRUCTIONS

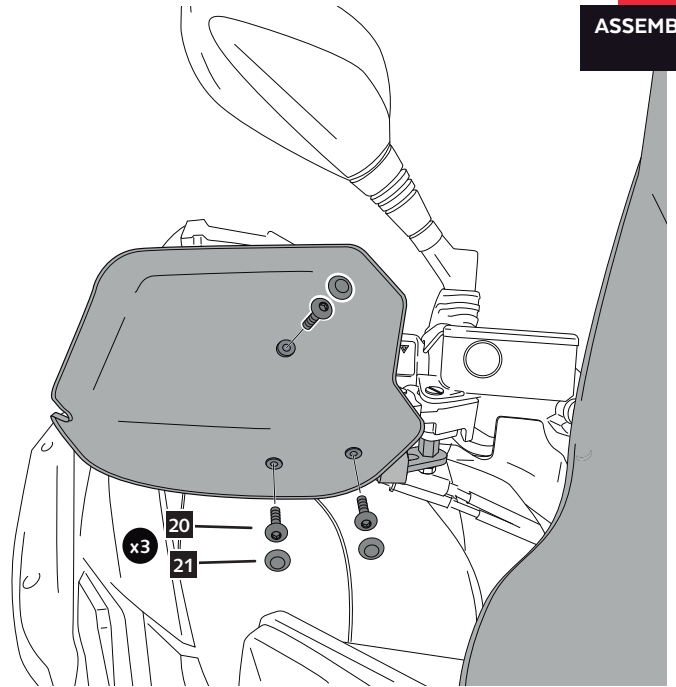
5

ASSEMBLY



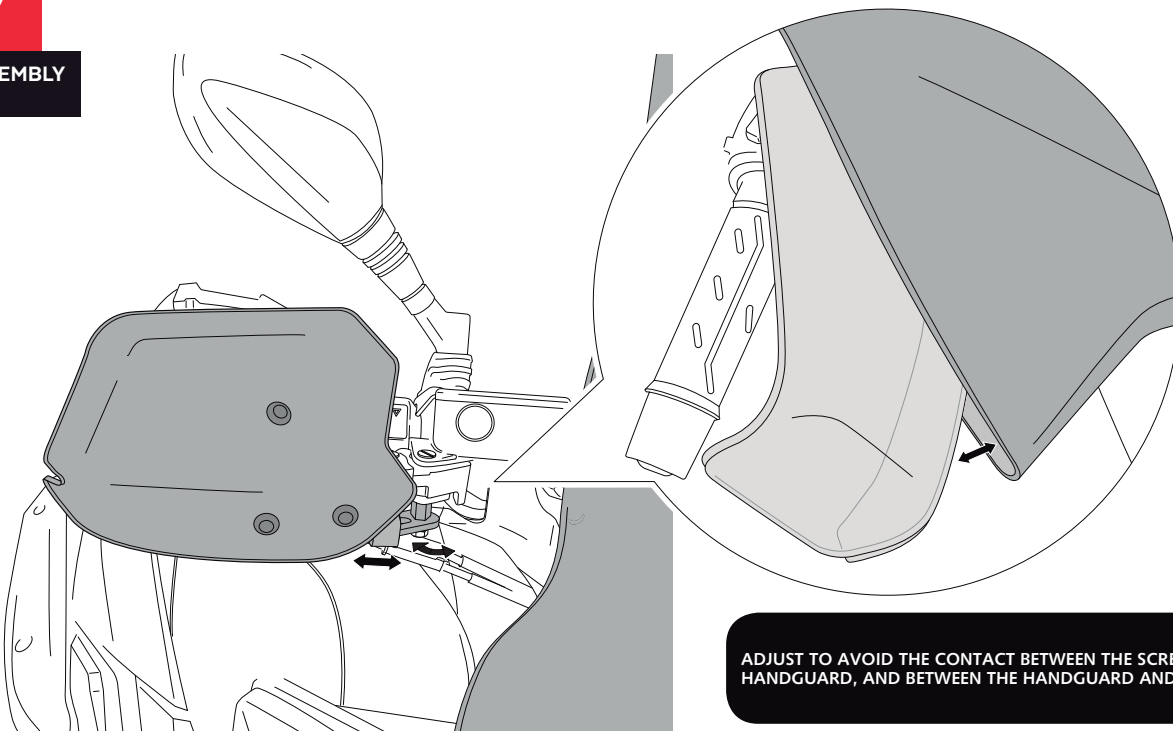
6

ASSEMBLY



7

ASSEMBLY



KYMCO XCITING 400i '17-

REF 9652

HANDSGUARD FOR



SCREWDRIVER



N° 10

RATCHET



N° 10

ALLEN



N° 3

| ID. | * | PART | DESCRIPTION | QTY. | REF.: |
|-----|---|------|--|------|-----------------|
| 1 | | | Right handguard | 1 | 9652F/H/WM3 |
| 2 | | | Left handguard | 1 | 9652F/H/WM3 |
| 3 | | | R1 right metal support | 1 | SOPOR-4P-9-9652 |
| 4 | | | R2 right metal support | 1 | SOPOR-4P-9-9652 |
| 5 | | | L1 left metal support | 1 | SOPOR-4P-9-9652 |
| 6 | | | L2 left metal support | 1 | SOPOR-4P-9-9652 |
| 7 | * | | M5x9 special screw Hexagonal lenght 10 (M5x8) BLACK | 2 | TORNI-EM5---761 |
| 8 | * | | M5 lock nut | 2 | TUERCA-D982-746 |
| 9 | * | | M6x40 DIN912 allen screw (black) | 2 | TORNI-AD912-058 |
| 10 | * | | M6 DIN125 metallic washer (black) | 2 | ARANDEPD125-054 |
| 11 | * | | M6 DIN912 screw cap | 2 | TAPON-----88 |
| 12 | * | | M6x12 special screw Hexagonal lenght 10 (M6x6) BLACK | 2 | TORNI-EM6---801 |
| 13 | | | M6x12 special screw Hexagonal lenght 20 (M6x12) BLACK | 2 | TORNI-EM6---802 |
| 14 | | | M6x14 DIN933 screw BLACK | 2 | TOZB00M60000107 |
| 15 | | | M6 DIN933 screw cap | 2 | CAPERUZTOM6-063 |
| 16 | | | M6 DIN985 lock nut | 4 | TUZBM6000000024 |
| 17 | | | M6 nut cap | 4 | CAPERUTUM6-21/1 |
| 18 | | | Ø12xØ6x9 silentblock | 6 | AROPASACABLES-1 |
| 19 | | | Ø12xØ6,8x7,3 bush with flange | 6 | CASQUI-1A---750 |
| 20 | | | M5 x16 Ø11 ISO 7380 allen screw | 6 | TORNI-I7380-493 |
| 21 | | | M5 ISO7380 screw cap | 6 | TAPON-----85 |

* NOT USED FOR THIS MODEL

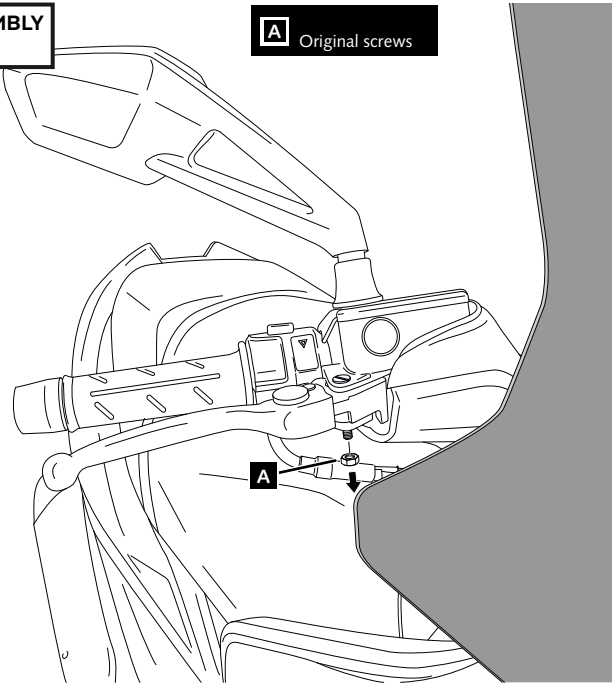
KYMCO XCITING 400i '17-

MOUNTING INSTRUCTIONS

1

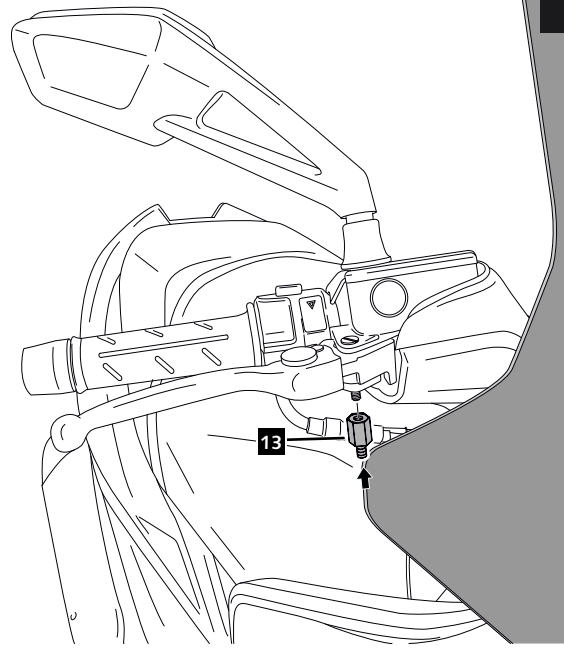
DISASSEMBLY

A Original screws



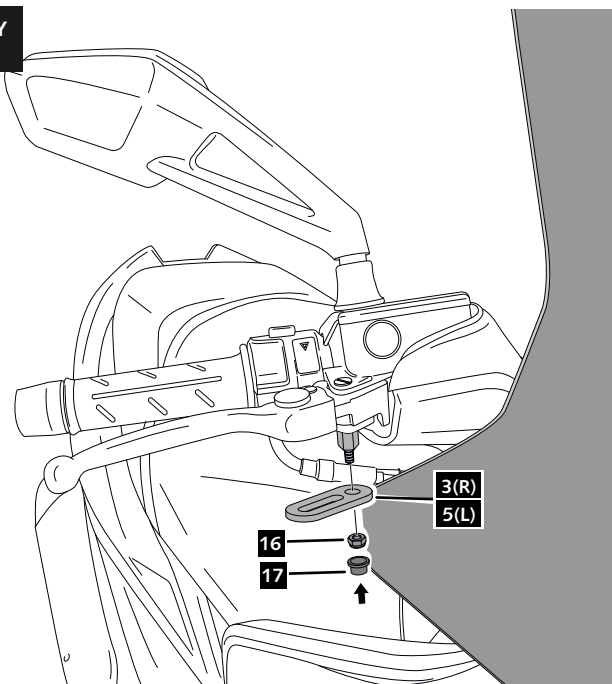
2

ASSEMBLY



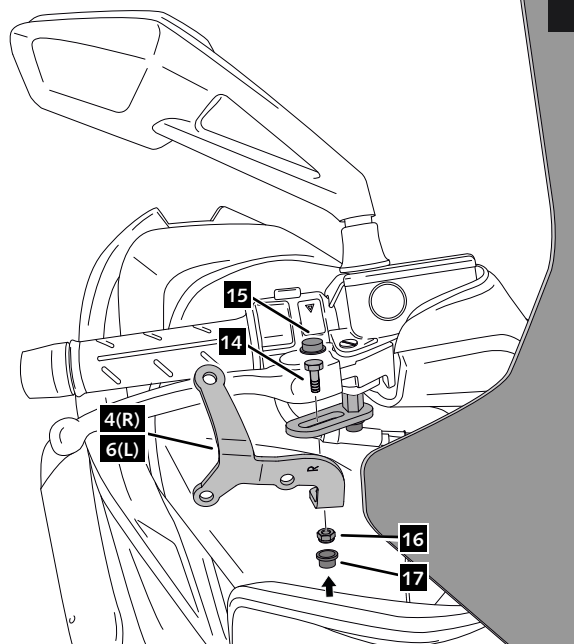
3

ASSEMBLY



4

ASSEMBLY

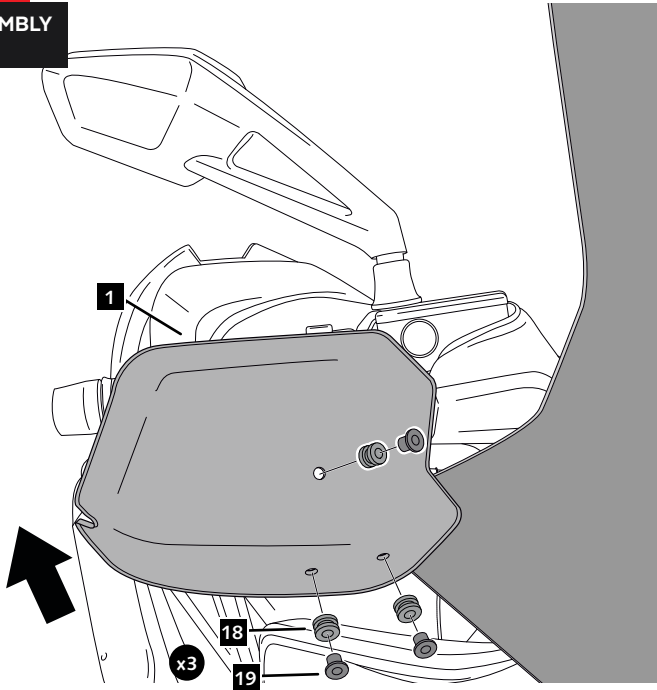


KYMCO XCITING 400i '17-

MOUNTING INSTRUCTIONS

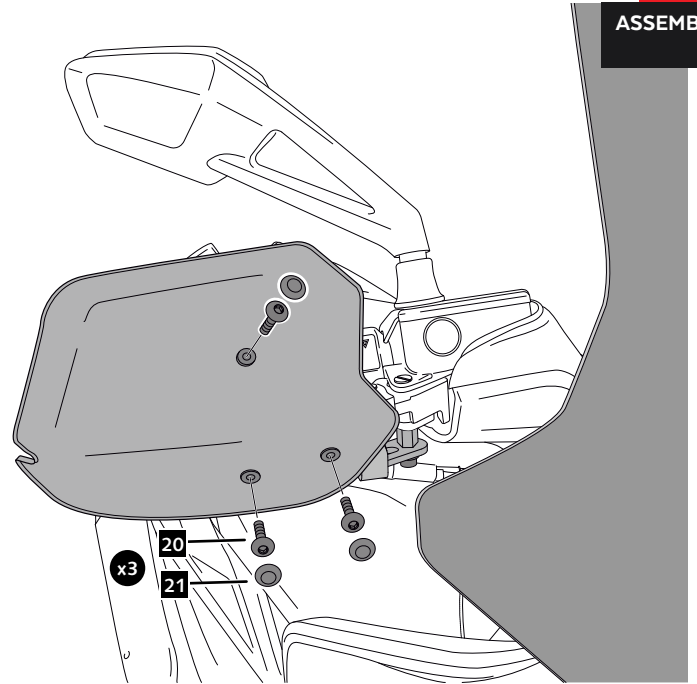
5

ASSEMBLY



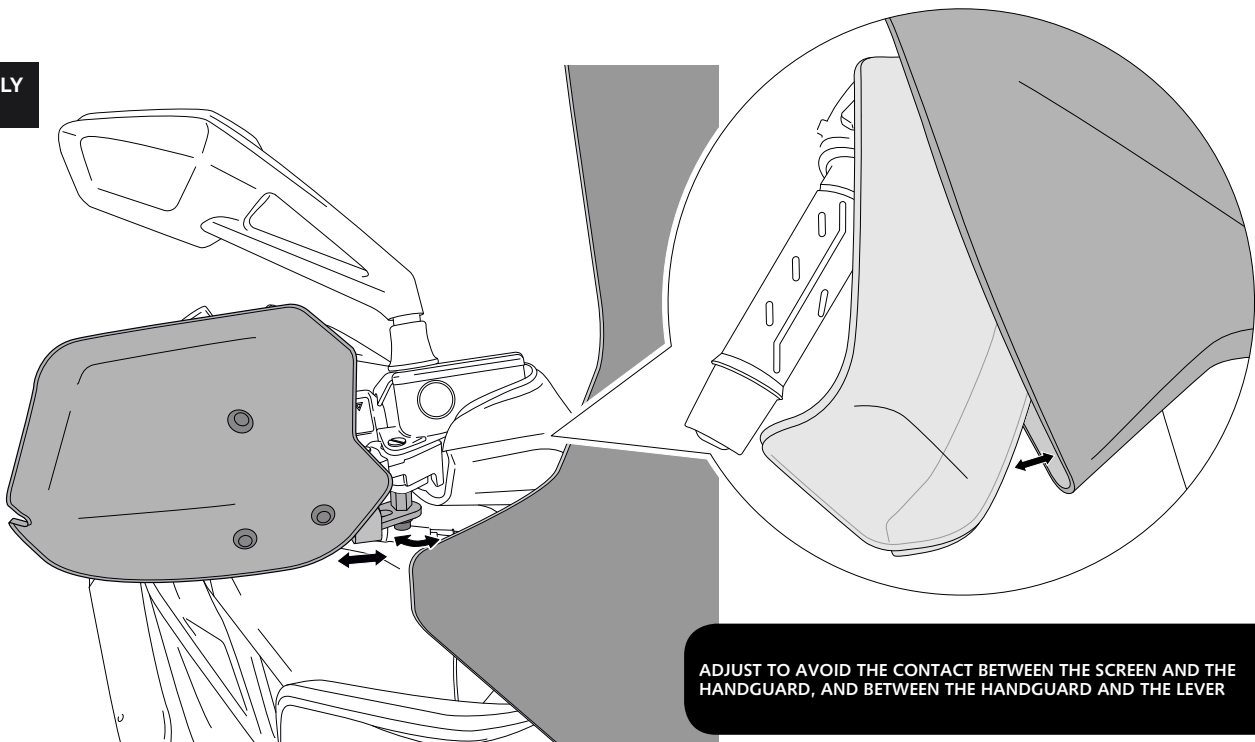
6

ASSEMBLY



7

ASSEMBLY



ADJUST TO AVOID THE CONTACT BETWEEN THE SCREEN AND THE HANDGUARD, AND BETWEEN THE HANDGUARD AND THE LEVER

YAMAHA N-MAX 125 '15- '20

REF 9652

HANDSGUARD FOR



| ID. | * | PART | DESCRIPTION | QTY. | REF.: |
|-----|---|------|---|------|-----------------|
| 1 | | | Right handguard | 1 | 9652F/H/WM3 |
| 2 | | | Left handguard | 1 | 9652F/H/WM3 |
| 3 | | | R1 right metal support | 1 | SOPOR-4P-9-9652 |
| 4 | | | R2 right metal support | 1 | SOPOR-4P-9-9652 |
| 5 | | | L1 left metal support | 1 | SOPOR-4P-9-9652 |
| 6 | | | L2 left metal support | 1 | SOPOR-4P-9-9652 |
| 7 | * | | M5x9 special screw Hexagonal lenght 10 (M5x8) BLACK | 2 | TORNI-EM5---761 |
| 8 | * | | M5 lock nut | 2 | TUERCA-D982-746 |
| 9 | * | | M6x40 DIN912 allen screw (black) | 2 | TORNI-AD912-058 |
| 10 | * | | M6 DIN125 metallic washer (black) | 2 | ARANDEPD125-054 |
| 11 | * | | M6 DIN912 screw cap | 2 | TAPON-----88 |
| 12 | | | M6x12 special screw Hexagonal lenght 10 (M6x6) BLACK | 2 | TORNI-EM6---801 |
| 13 | * | | M6x12 special screw Hexagonal lenght 20 (M6x12) BLACK | 2 | TORNI-EM6---802 |
| 14 | | | M6x14 DIN933 screw BLACK | 2 | TOZB00M60000107 |
| 15 | | | M6 DIN933 screw cap | 2 | CAPERUZTOM6-063 |
| 16 | | | M6 DIN985 lock nut | 4 | TUZBM6000000024 |
| 17 | | | M6 nut cap | 4 | CAPERUTUM6-21/1 |
| 18 | | | Ø12xØ6x9 silentblock | 6 | AROPASACABLES-1 |
| 19 | | | Ø12xØ6,8x7,3 bush with flange | 6 | CASQUI-1A---750 |
| 20 | | | M5 x16 Ø11 ISO 7380 allen screw | 6 | TORNI-I7380-493 |
| 21 | | | M5 ISO7380 screw cap | 6 | TAPON-----85 |

* NOT USED FOR THIS MODEL

YAMAHA N-MAX 125 '15- '20

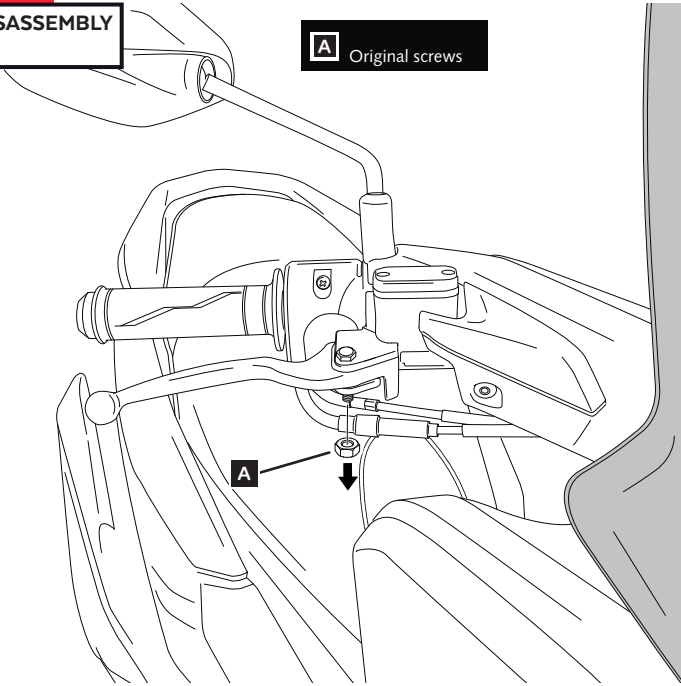
MOUNTING INSTRUCTIONS

RIGHT SIDE

1

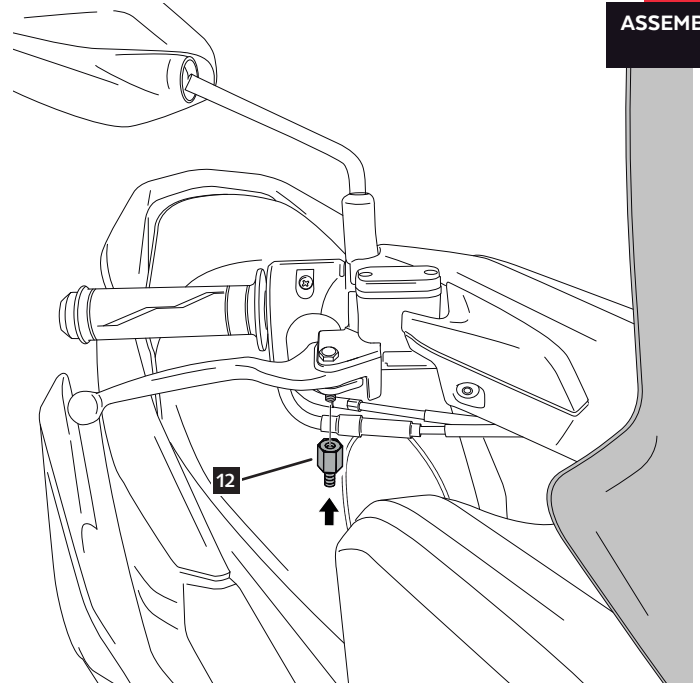
DISASSEMBLY

A Original screws



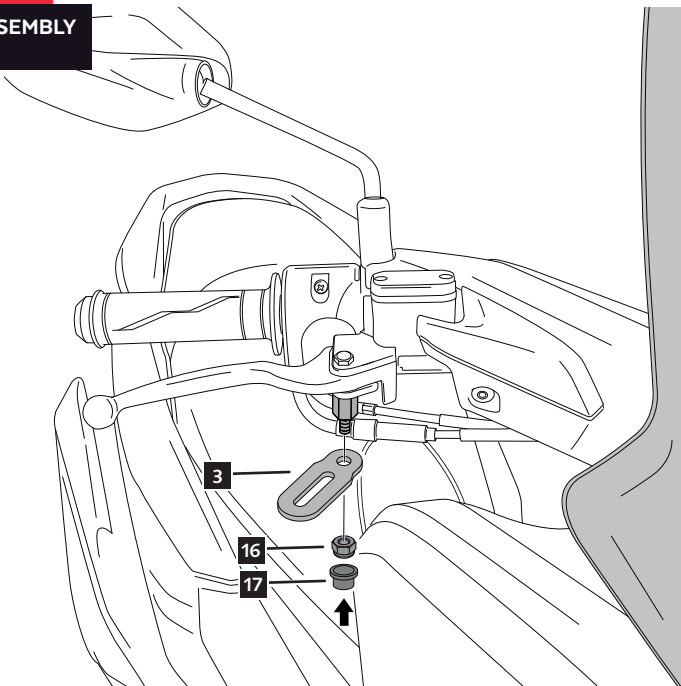
2

ASSEMBLY



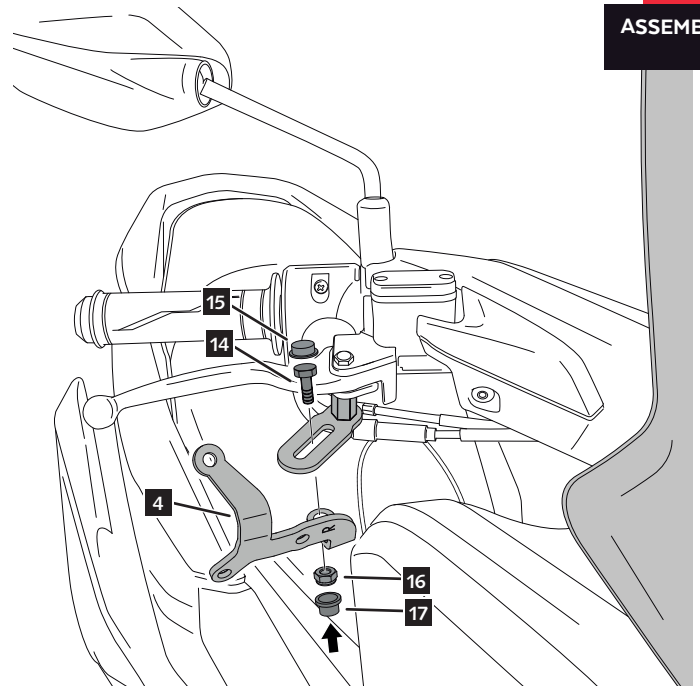
3

ASSEMBLY



4

ASSEMBLY



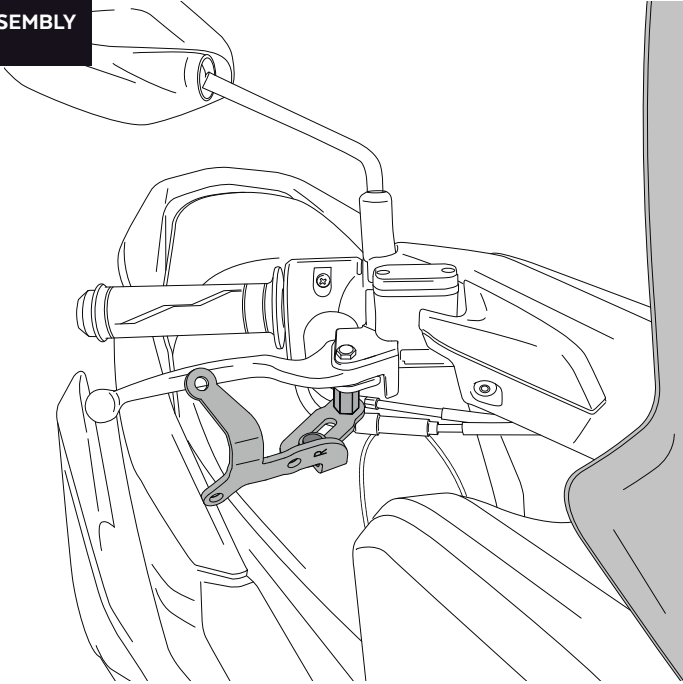
YAMAHA N-MAX 125 '15- '20

MOUNTING INSTRUCTIONS

RIGHT SIDE

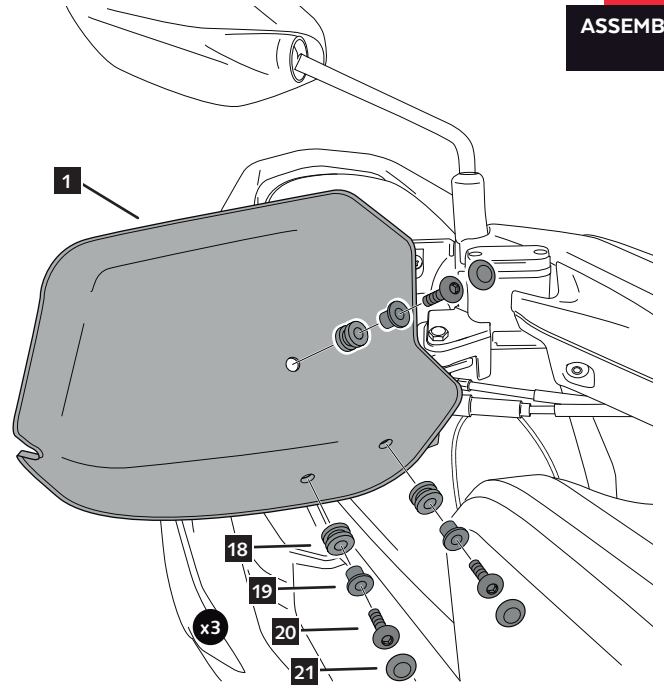
5

ASSEMBLY



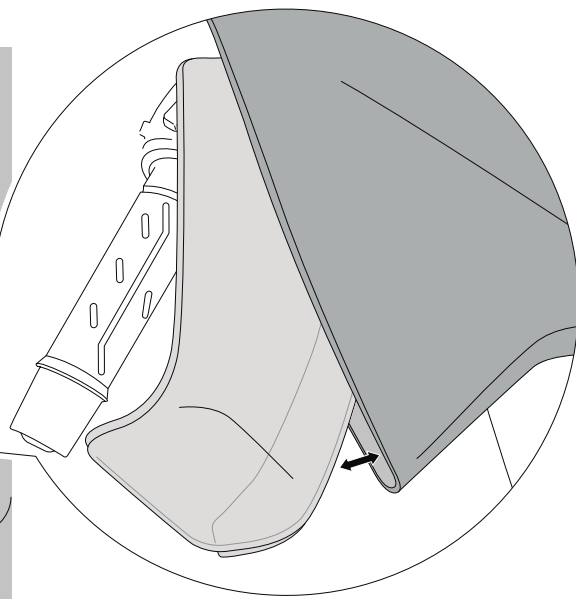
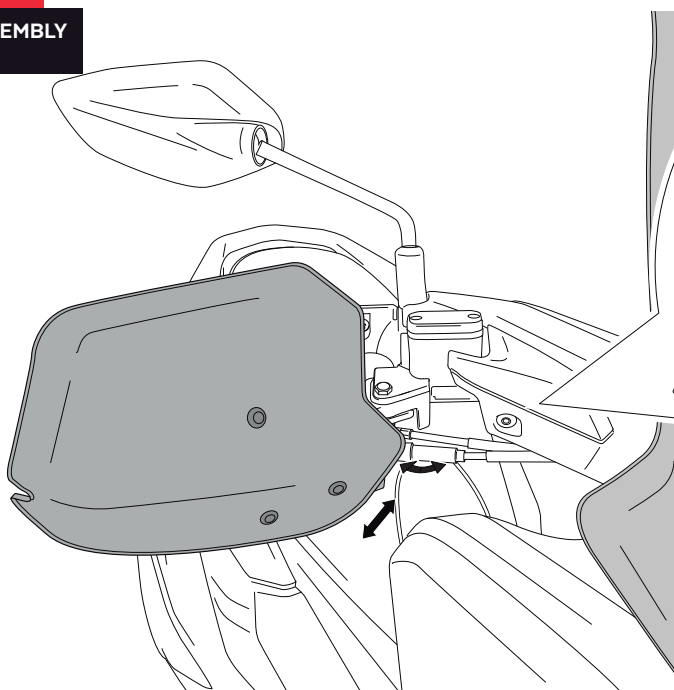
6

ASSEMBLY



7

ASSEMBLY



ADJUST TO AVOID THE CONTACT BETWEEN THE SCREEN AND THE HANDGUARD, AND BETWEEN THE HANDGUARD AND THE LEVER

YAMAHA N-MAX 125 '15- '20

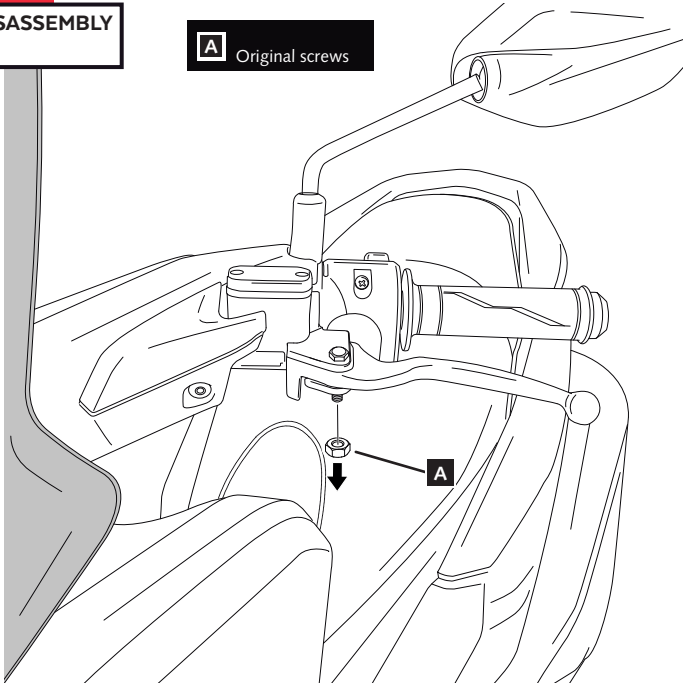
MOUNTING INSTRUCTIONS

LEFT SIDE

1

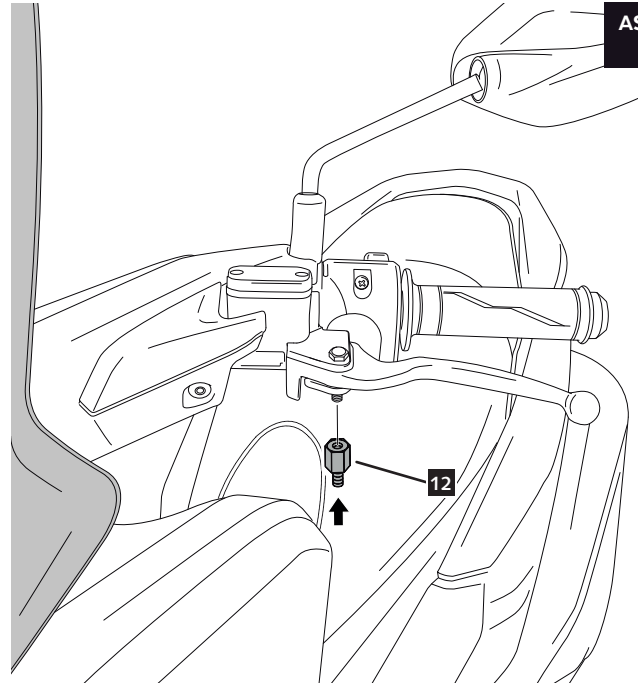
DISASSEMBLY

A Original screws



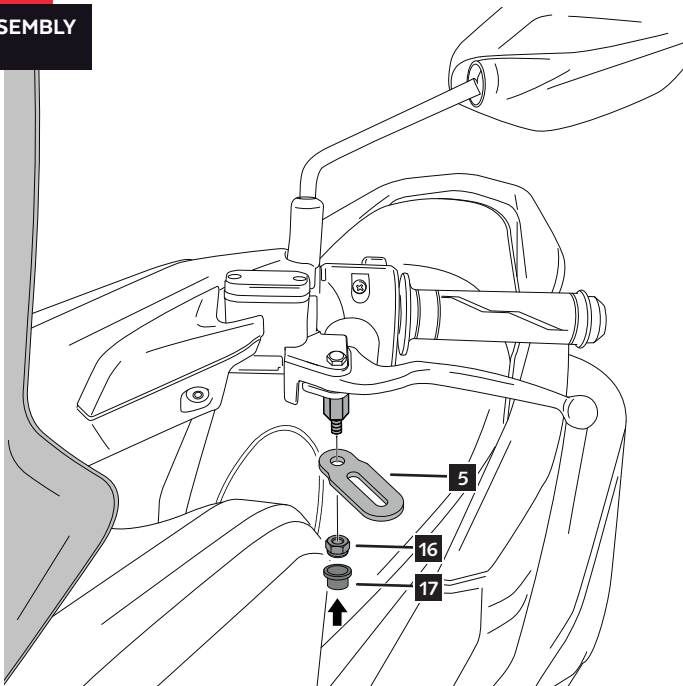
2

ASSEMBLY



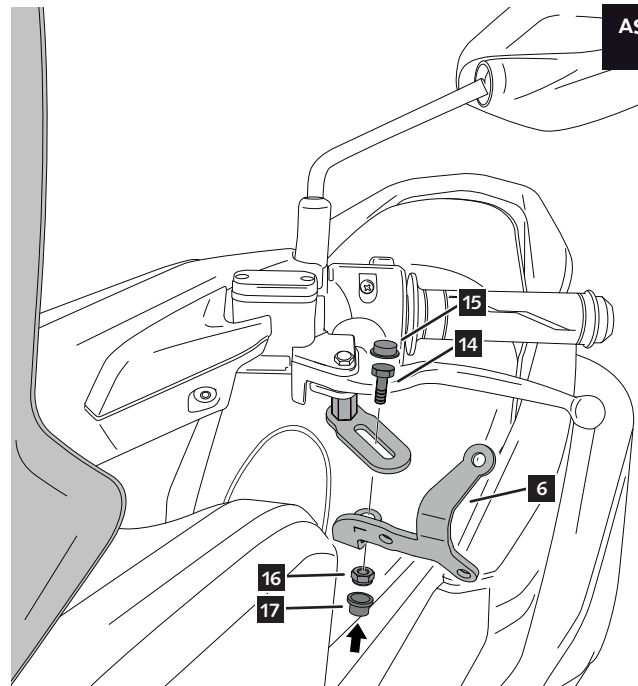
3

ASSEMBLY



4

ASSEMBLY



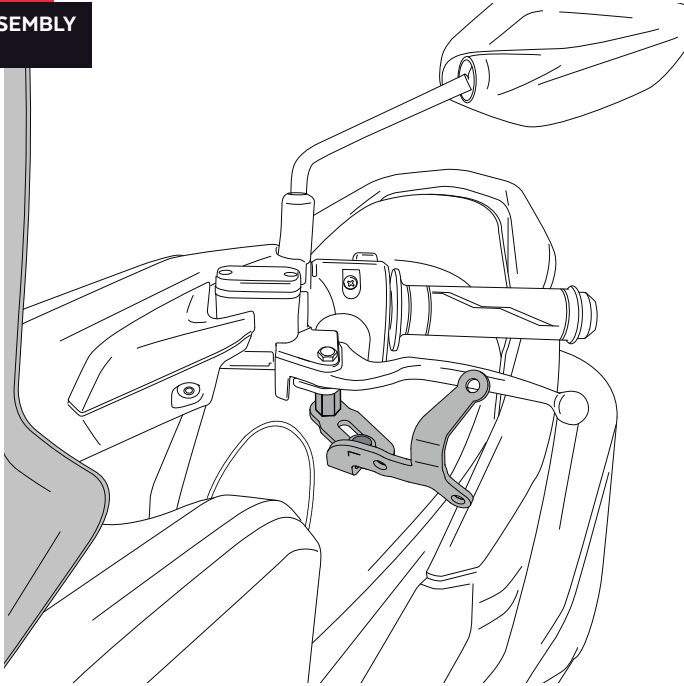
YAMAHA N-MAX 125 '15- '20

MOUNTING INSTRUCTIONS

LEFT SIDE

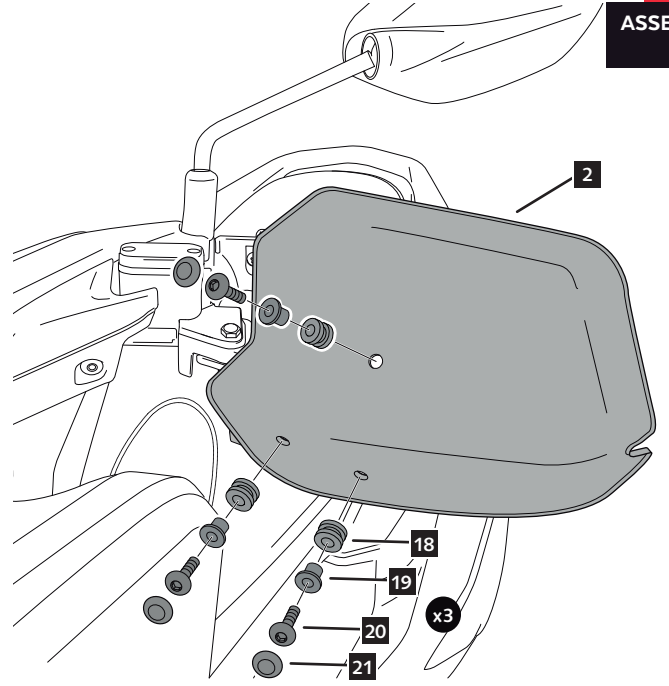
5

ASSEMBLY



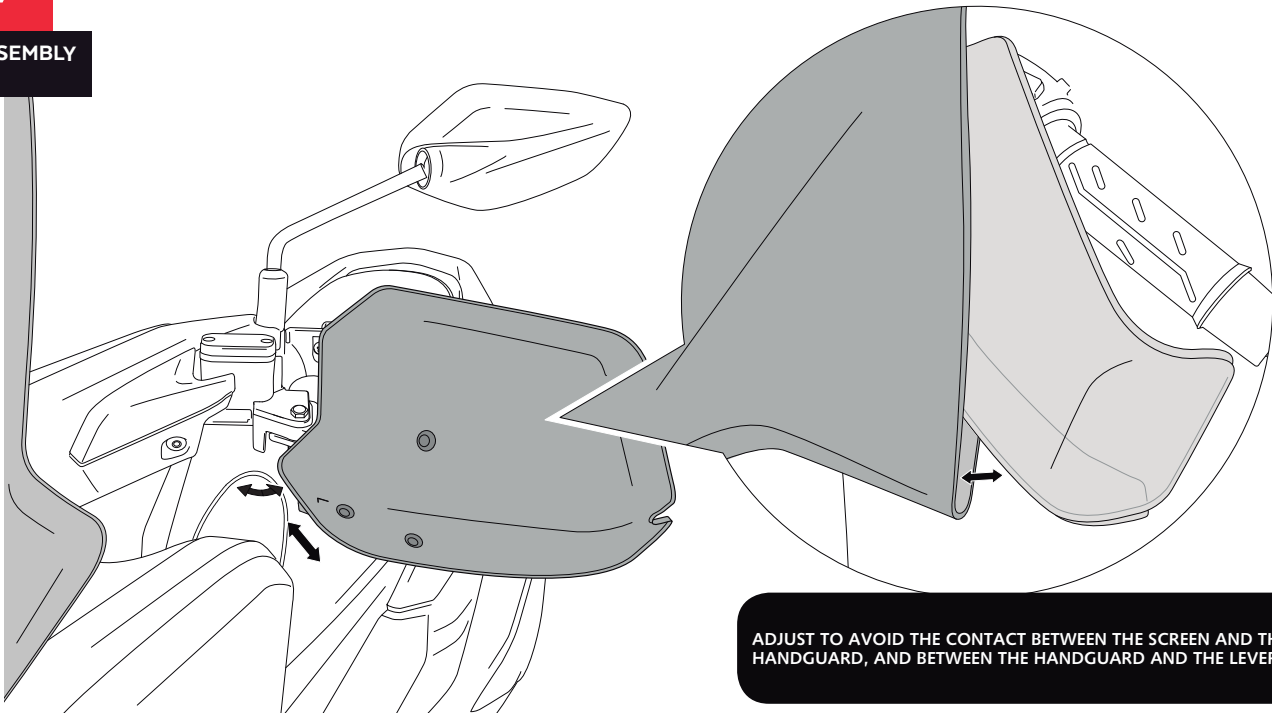
6

ASSEMBLY



7

ASSEMBLY



ADJUST TO AVOID THE CONTACT BETWEEN THE SCREEN AND THE HANDGUARD, AND BETWEEN THE HANDGUARD AND THE LEVER