

INSTRUCTIONS TO ASSEMBLE

Remove the fasteners that subject the chassis to the engine, on the point marked below (and the opposite side).
Mount the protectors on each own side as the figure below shows. Tight the set, and place the caps.
All the screws replaced, should be tightened to the torque specified in the oem maintenance manual for your motorcycle. If no torque specifications are provided in the oem maintenance manual, may be used 54Nm for all M10 screws.
Medium strength liquid thread-locker (i.e., "Loctite") should be used to secure all screws, bolts and nuts.
All screws, bolts and nuts should be checked after driving the first 50 km to ensure that all are tightened to the proper torque.

ID.	DESCRIPTION	REF.	QTY.
1	Covers set	CONGOMANPROR12	1
2	M10/150x30 DIN912 screw	M2TM10150030A9B	2
3	M10 DIN6798/A washer	M2AMI0DIN6798ZB	2
4	M10 DIN125/A washer	M2AMI0DIN125AZB	4
5	Nylon protector	PROTECNLR12-145	2
6	Right steel plate	CASQU113-2-1313	2
7	Left steel plate	PLAT1362-0-0362	1
8	Right steel plate	PLAT1363-0-0363	1
9	Black aluminium spacer (Ø22x46)	CASQU112-0-1412	1
10	Black aluminium spacer (Ø22x82)	CASQU437-0-1737	1
11	M6x20 DIN912 black screw	TORNI-AD912-489	2
12	Aluminium spacer (Ø10x40)	CASQU438-0-1738	2
13	M10/125x100 DIN912 screw	TORNIAD912-0329	1
14	M10/125x130 DIN912 screw	M2TM10125130A9B	1

FOR TO ASSEMBLE THE CRASH PADS, IF YOU ARE NOT A TRAINED MECHANIC, PLEASE CONTACT A SPECIALIST.
MOTOPLASTIC, S.A. TAKES NO RESPONSIBILITY FOR DAMAGES CAUSED BY IMPROPER INSTALLATION.
THE USE OF CRASH PADS DO NOT GUARANTEE A FULL PROTECTION IN CASE OF ACCIDENT.
MOTOPLASTIC-PUIG DECLINE ANY RESPONSIBILITY IN CASE OF MOTORCYCLE DAMAGE.

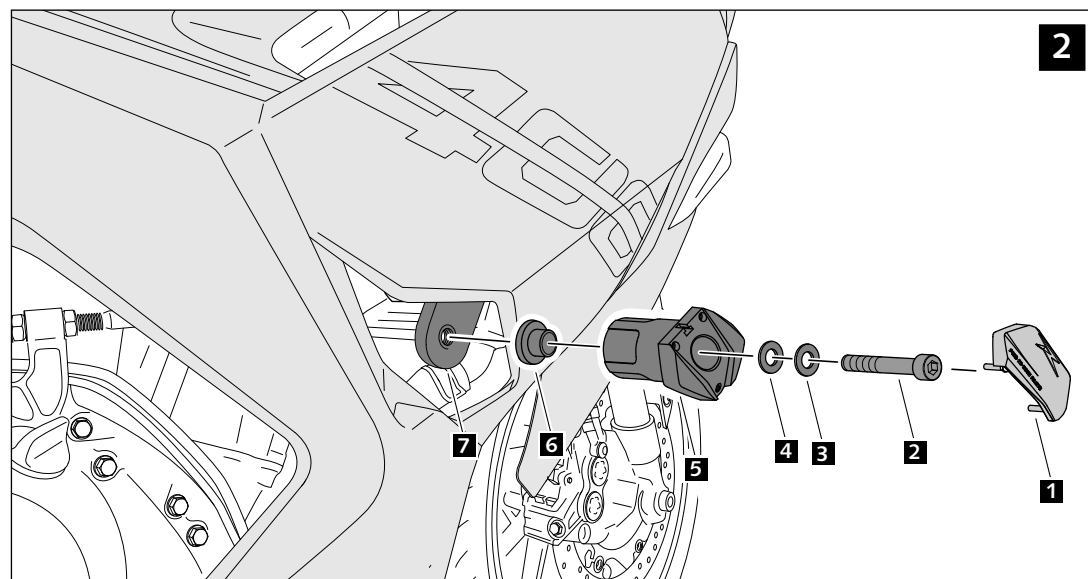
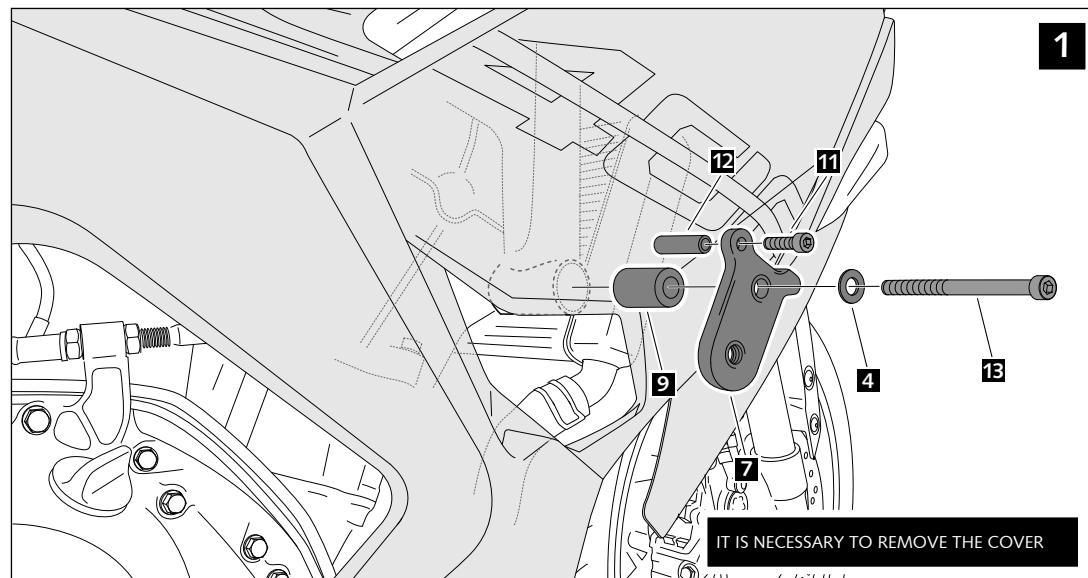
MOUNTING INSTRUCTIONS

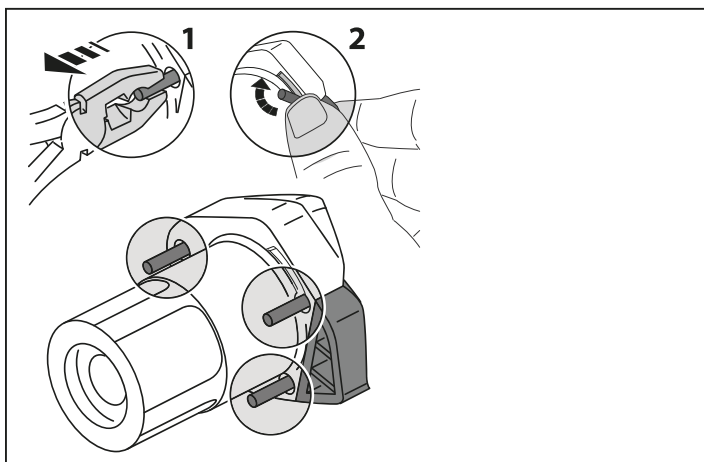
CRASH PADS FOR

KAWASAKI NINJA 400 '18

Ref.: 9628N

RIGHT SIDE





CONSULT OUR WEBSITE THE VIDEO MOUNT AVAILABILITY OF THIS REFERENCE

MOUNTING INSTRUCTIONS

CRASH PADS FOR KAWASAKI NINJA 400 '18

Ref.: 9628N

LEFT SIDE

