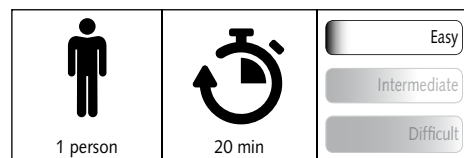
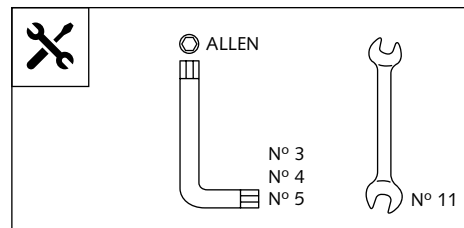

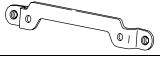







TOURING SCREEN FOR  
**SUZUKI DL250 V-STROM '17-**

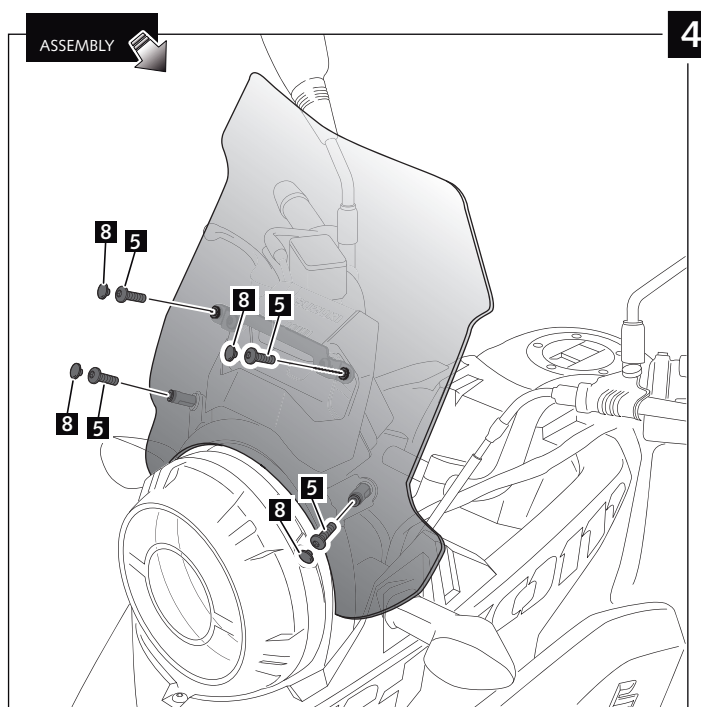
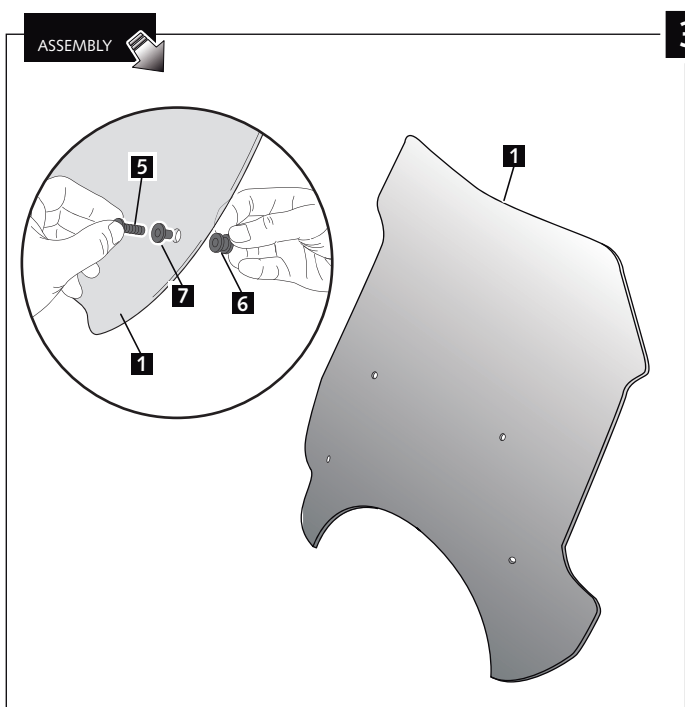
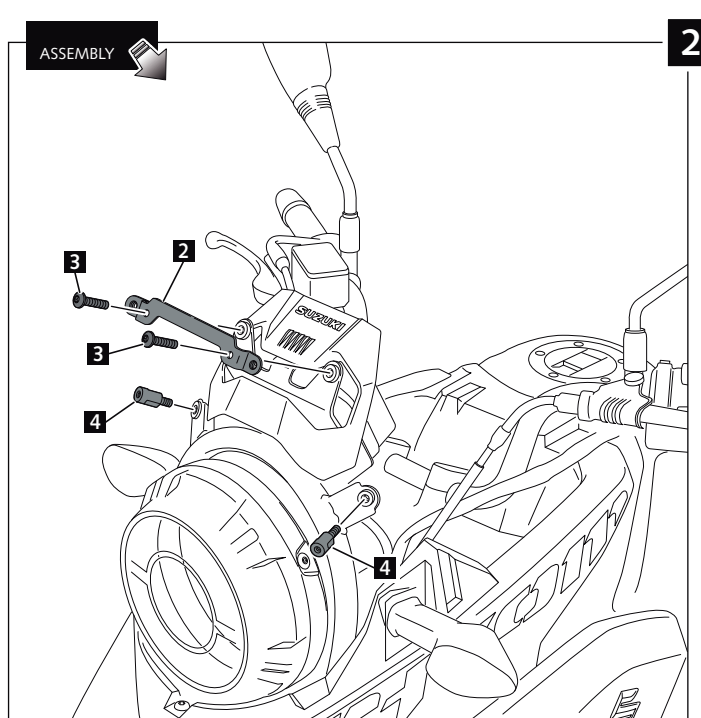
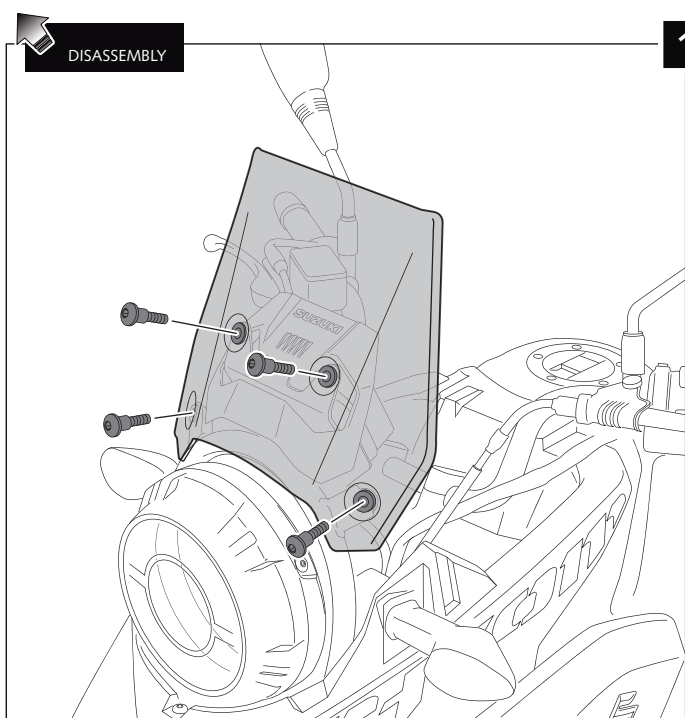
Ref.: 9606



ID	PART	DESCRIPTION	QTY	REF.
1		Touring screen	1	9606F/H/W/NM3
2		Metal support	1	SOPOR-1P-2-9606
3		M6x10 Ø11 ISO 7380 screw	2	TORNIAI7380-205
4		M6x17 special screw, cylindrical Bush lenght 20(inner M5x15)	2	TORNI-EM6---800
5		M5x16 Ø11 ISO 7380 screw	4	TORNI-I7380-493
6		Ø9xØ6x8 silentblock	4	AROPASACABLES-3
7		Ø12xØ6,8x7,3 bush with flange	4	CASQUI-1A---750
8		M5 ISO 7380 screw cap	4	TAPON-----85

## TOURING SCREEN FOR SUZUKI DL250 V-STROM '17-

### - MOUNTING INSTRUCTIONS -



## MULTI-ADJUSTABLE VISOR



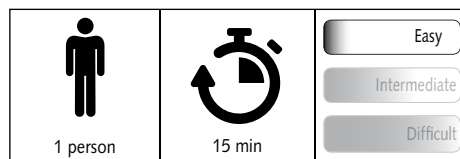
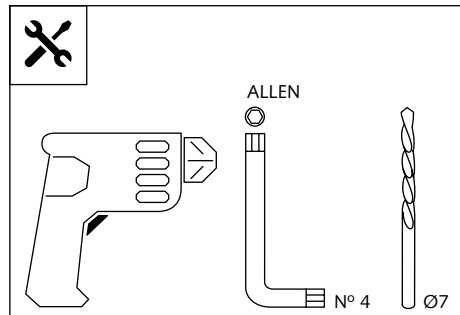
Ref.: 6007

Ref.: 5852

Ref.: 5853

Smoke

Clear



Note:

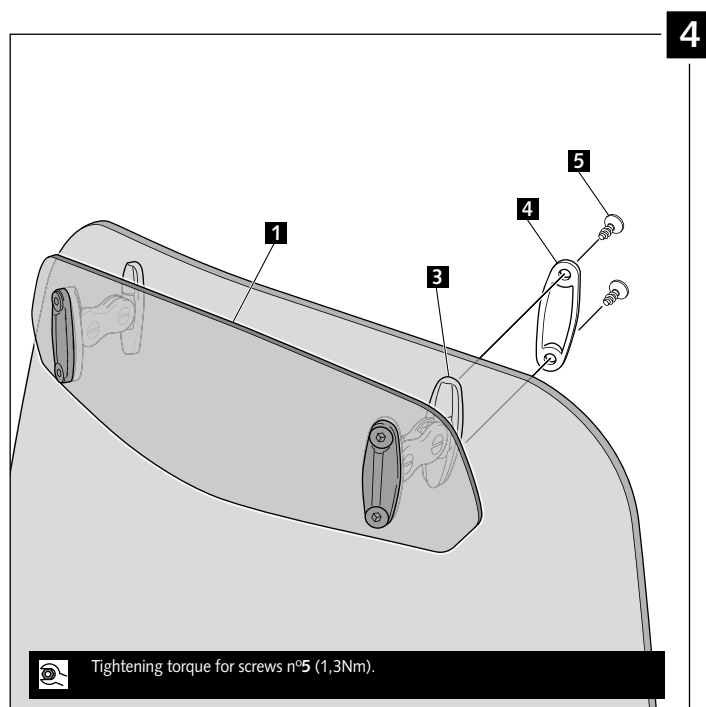
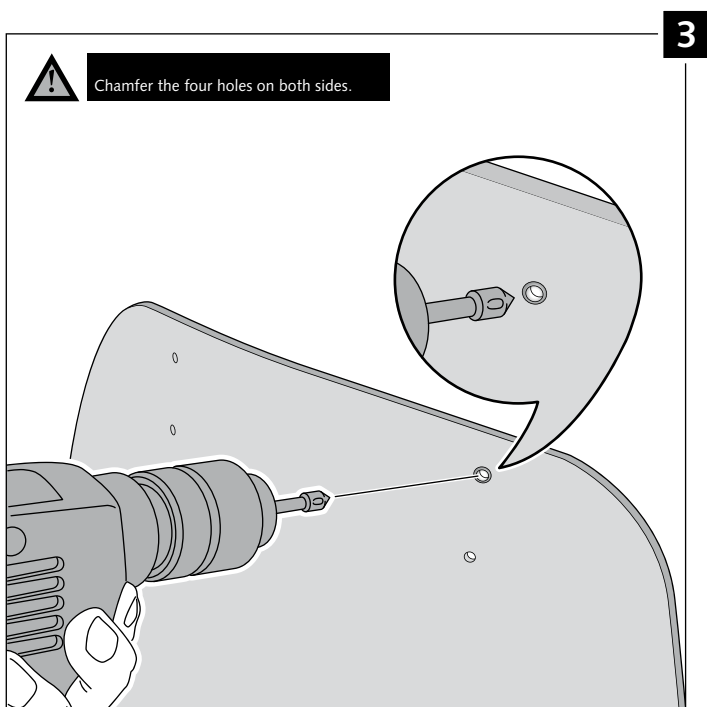
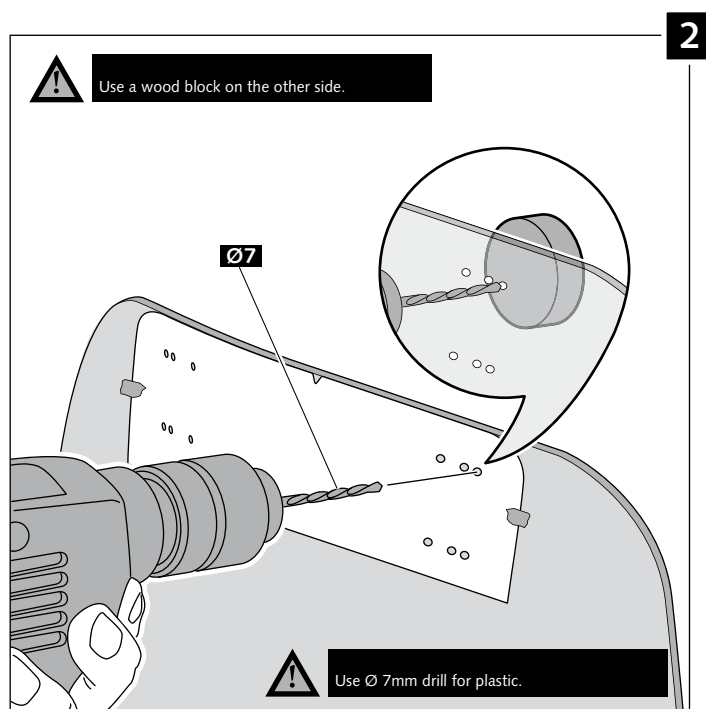
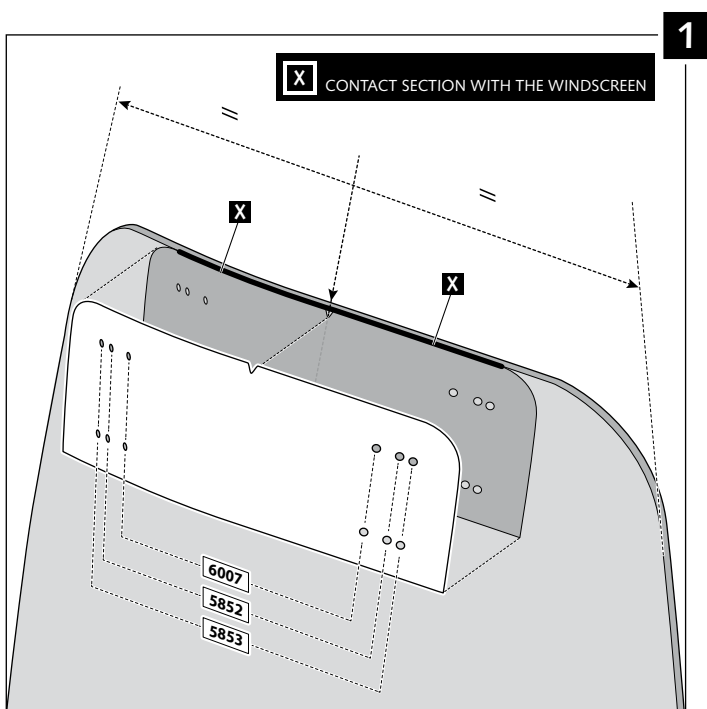
If the visor is supplied along with the windscreen, the windscreen will come factory-drilled so no drilling is necessary.

ID.	PART	DESCRIPTION	QTY.
1		Visor	1
2		Template	1
3		Multi-adjustable mechanism	2
4		Cap	4
5		Plastic thread fastener M6x12	8

## VIS MULTI-ADJUSTABLE VISOR

### - MOUNTING INSTRUCTIONS -

#### TYPE A

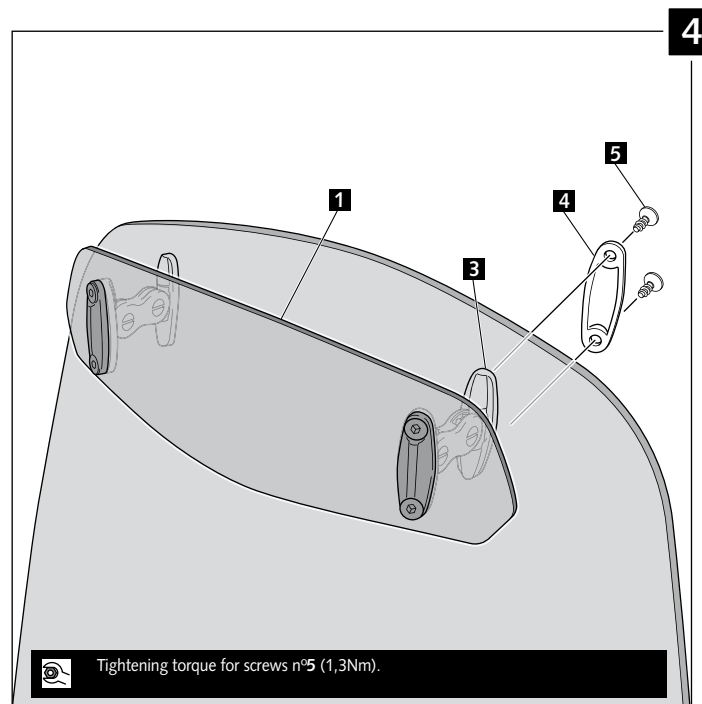
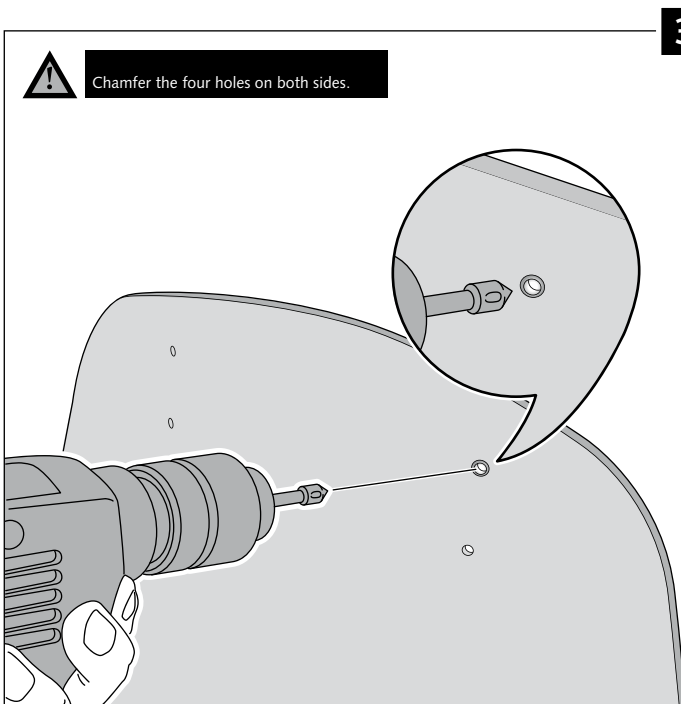
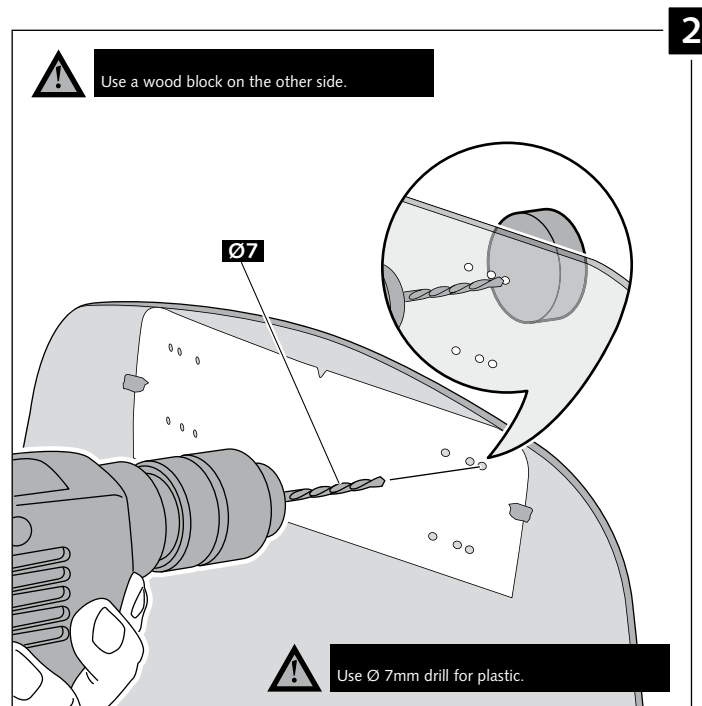
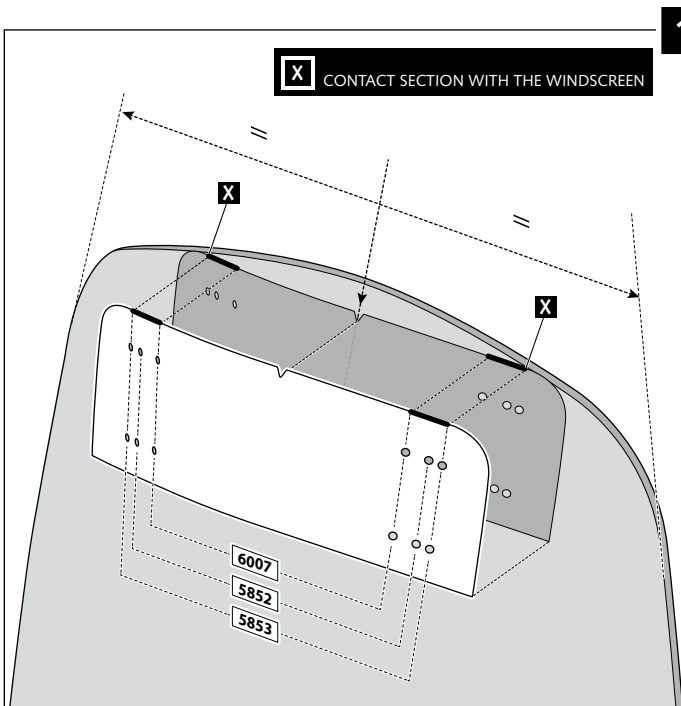




# MULTI-ADJUSTABLE VISOR

## - MOUNTING INSTRUCTIONS -

### TYPE B



# MULTI-ADJUSTABLE VISOR

## - MOUNTING INSTRUCTIONS -

### TYPE C

