

ID.	DESCRIPTION	REF.	QTY.
1	M10/150x90 DIN912 screw	TORNIAD912-0348	2
2	M10 plastic cap	TAPA--CHC10800E	4
3	M10 DIN6798/A washer	MZAM10DIN6798ZB	2
4	M10 DIN125/A washer	MZAM10DIN125AZB	2
5	Nylon protector	CASQU352-0-1652	2
6	Anodized aluminium spacer	CASQU351-1-1651	2
7	Aluminium spacer (Ø39x48)	CASQU432-0-1732	2
8	Right steel plate	PLATI360-0-0360	1
9	Left steel plate	PLATI361-0-0361	1
10	Aluminium spacer (Ø23x76)	CASQU433-0-1733	1
11	Aluminium spacer (Ø23x65)	CASQU434-0-1734	1
12	Aluminium spacer (Ø23x72)	CASQU436-0-1736	1
13	Aluminium spacer (Ø23x58)	CASQU435-0-1735	1
14	M10/125x120 DIN912 screw	TORNIAD912-4522	2
15	M10/125x100 DIN912 screw	TORNIAD912-0329	1
16	M10/125x90 DIN912 screw	TORNIAD912-332	1

INSTRUCTIONS TO ASSEMBLE

Remove the fasteners that subject the chassis to the engine, on the point marked below (and the opposite side). Mount the protectors on each own side as the figure below shows. Tight the set, and place the caps. All the screws replaced, should be tightened to the torque specified in the oem maintenance manual for your motorcycle. if no torque specifications are provided in the oem maintenance manual, may be used 54Nm for all M10 screws.

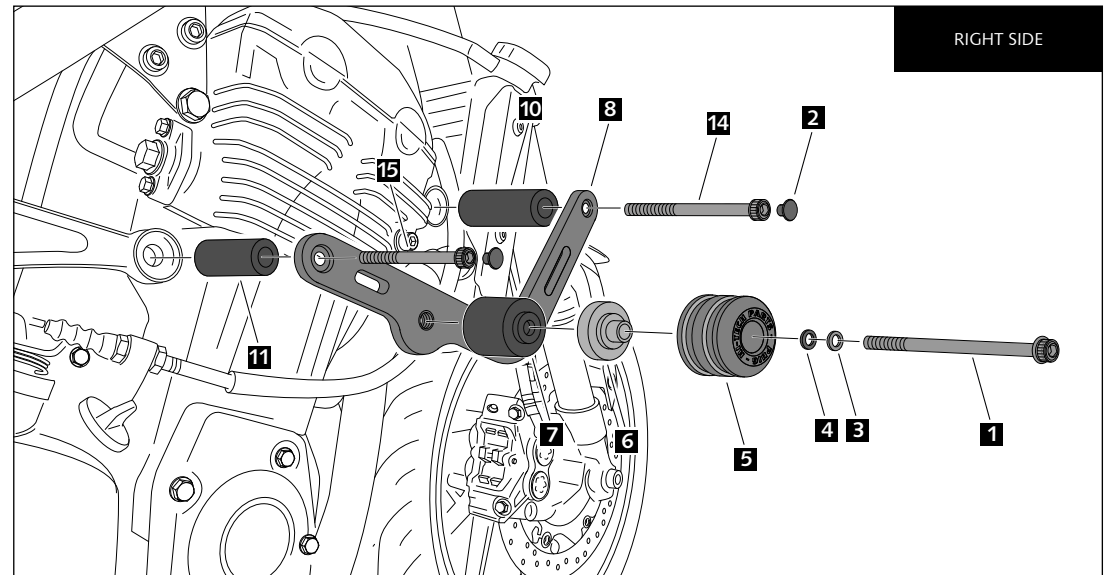
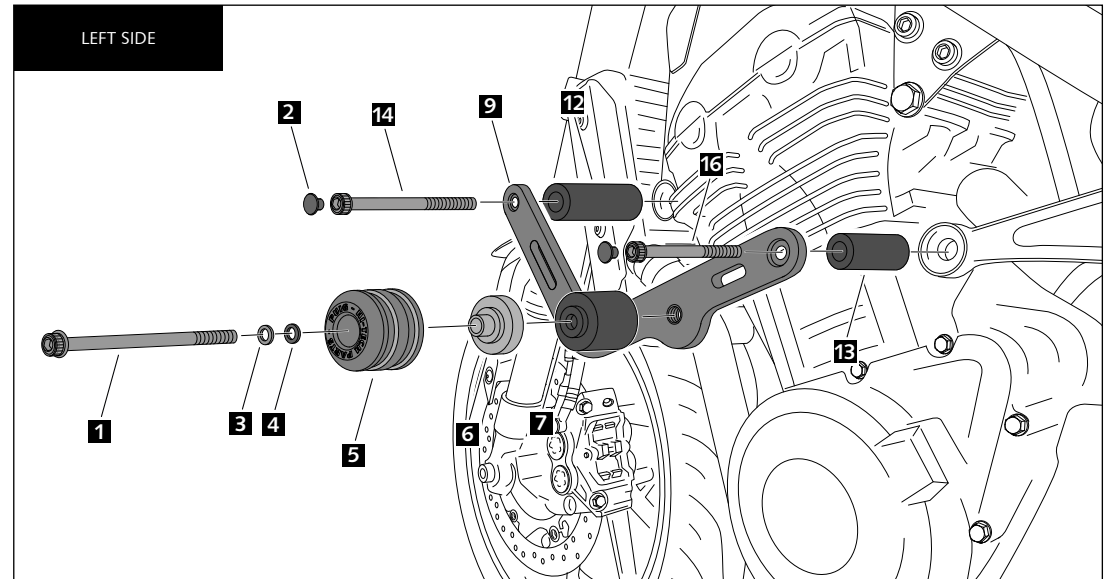
Medium strength liquid thread-locker (i.e., "Loctite") should be used to secure all screws, bolts and nuts. All screws, bolts and nuts should be checked after driving the first 50 km to ensure that all are tightened to the proper torque.

FOR TO ASSEMBLE THE CRASH PADS, IF YOU ARE NOT A TRAINED MECHANIC, PLEASE CONTACT A SPECIALIST. MOTOPLASTIC, S.A. TAKES NO RESPONSIBILITY FOR DAMAGES CAUSED BY IMPROPER INSTALLATION. THE USE OF CRASH PADS DO NOT GUARANTEE A FULL PROTECTION IN CASE OF ACCIDENT. MOTOPLASTIC-PUIG DECLINE ANY RESPONSIBILITY IN CASE OF MOTORCYCLE DAMAGE.

MOUNTING INSTRUCTIONS

CRASH PADS FOR KAWASAKI Z900RS '18

Ref.: 9598



Find out more about motorcycle guards and protection we have.