

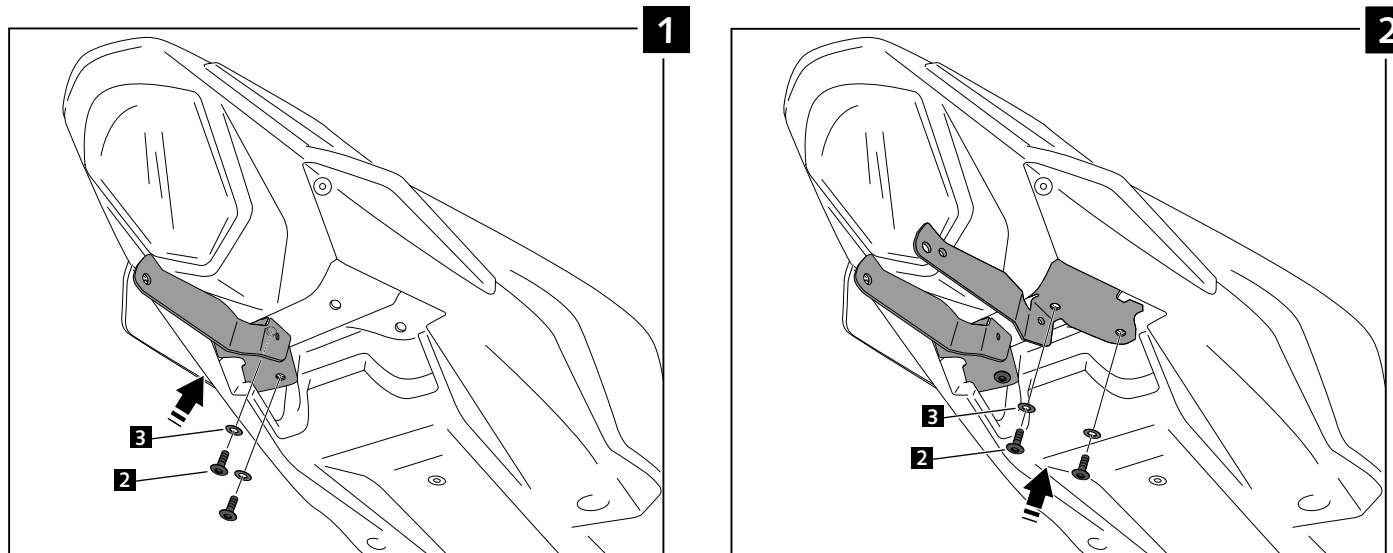
It would be convenient to re-tight the licence support screws, specially the ones that are fixed to the motorcycle, whenever you maintain the vehicle.

Thanks for your attention.

MOUNTING INSTRUCTIONS

LICENSE SUPPORT ADAPTABLE TO
SUZUKI GSX250R '17-

Ref.: 9523N



ID.	DESCRIPTION	REF.	QTY.
1	License support	CONJUNTO--9523N	1
2	M6x15 DIN1001 screw (black)	TORNI-I7380-403	4
3	M6 DIN9021 washer	ARANDPD9021-037	4
4	M5x12 DIN1001 screw (black)	TORNI-AI---520	2
5	M5 DIN9021 washer (black)	ARAND-PD5---152	2
6	M5 DIN6923 nut (black)	TUERCAEM5G-0315	2
7	Ø30mm adhesive foam	ADHESI-M30DX7--	2
8	Plastic bridle	BRIDAN100X2'5-N	5
9	Back light	5577N	1
10	Reflector	4481R	1

MOUNTING INSTRUCTIONS

LICENSE SUPPORT ADAPTABLE TO
SUZUKI GSX250R '17-

Ref.: 9523N

Fixation license support rotation 2 OPTIONS A-B

