

FRONT PLATE FOR DUCATI SCRAMBLER DESERT SLED / SCRAMBLER 1100



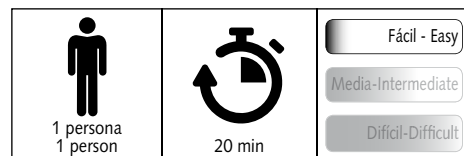
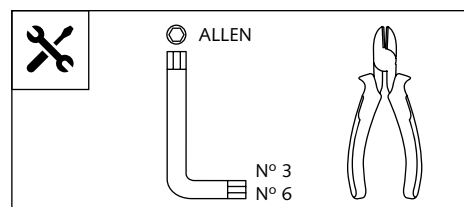
Ref.: 9522 J

(black colour)



Ref.: 9522 C

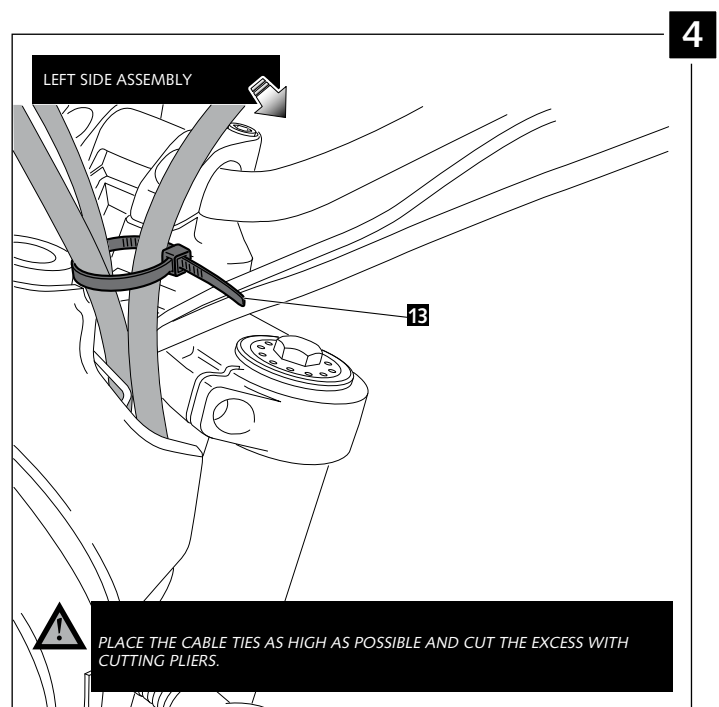
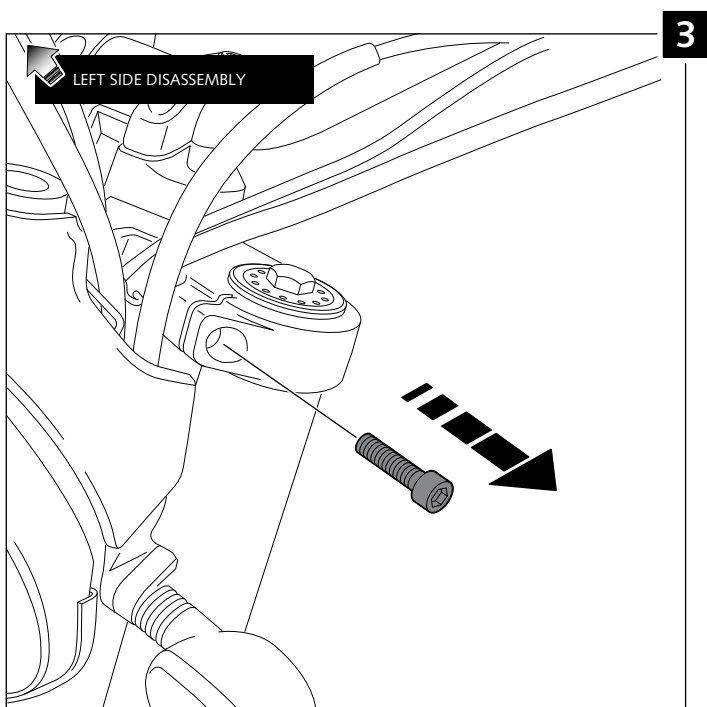
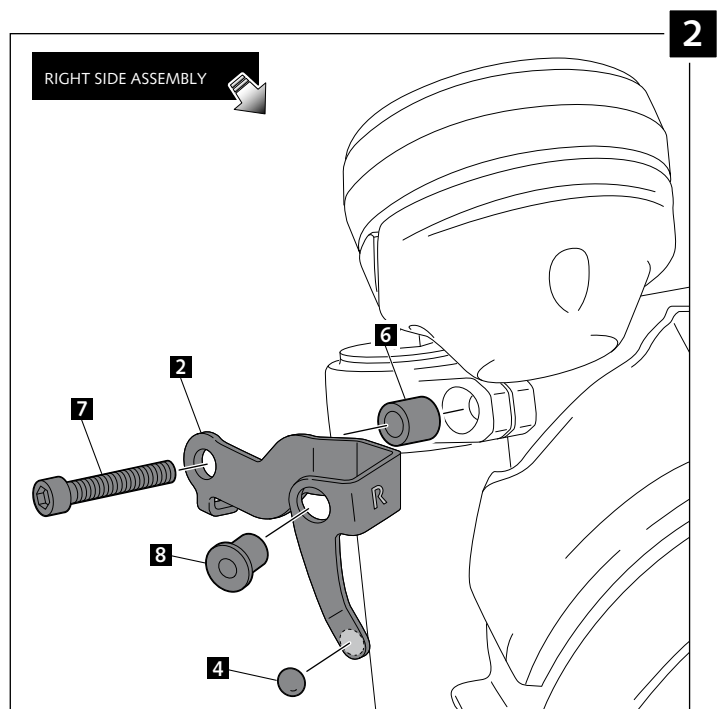
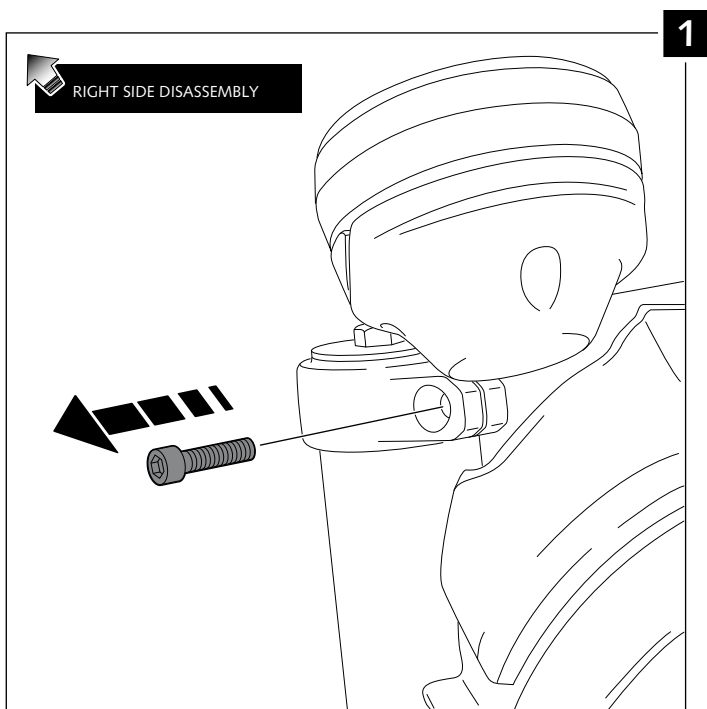
(carbon look)



ID	PART	DESCRIPTION	QTY	REF.
1		ABS front plate	1	10549C/JM3
2		Right metal support (R)	1	SOPOR-2P-9-9522
3		Left metal support (L)	1	SOPOR-2P-9-9522
4		Ø8x2mm silicone tear (supplied already mounted on item 1)	3	ADHESI-GT-D8---
5		Ø12,5 x 4mm silicone tear	1	TOPE-PA12,7X3,5
6		Øint. 8,5 X Øext. 13 X 15 mm arrowhead	2	CASQUI-M----614
7		M8x40 DIN912 Allen screw	2	TORNI-D912-475
8		M5 silentblock	2	SILENBTM5-046/1
9		M5x15 Ø11 ISO7380 Allen screw	2	TORNI-I7380-493
10		M5X1 Nylon washer	2	ARNV00000000245
11		M5 ISO 7380 Allen screw cap	2	TAPON-----85
12		Self-Autoadhesive Trim length 210mm , 8mm, thickness 5mm	1	PERFIL-PVC-1048
13		3,6x142 cable ties	1	BRIDAN142X3.6-N

FRONT PLATE FOR DUCATI SCRAMBLER DESERT SLED / SCRAMBLER 1100

MOUNTING INSTRUCTIONS



FRONT PLATE FOR
DUCATI
SCRAMBLER DESERT SLED / SCRAMBLER 1100

MOUNTING INSTRUCTIONS

