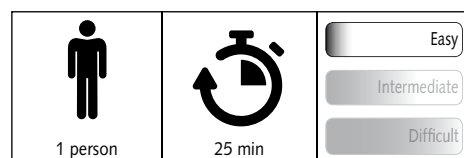
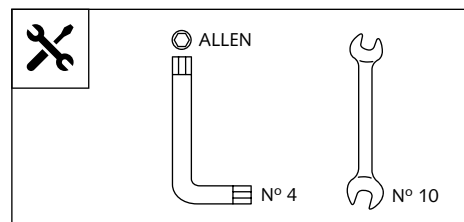
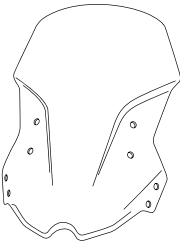





- TOURING SCREEN FOR -
BENELLI TRK 502

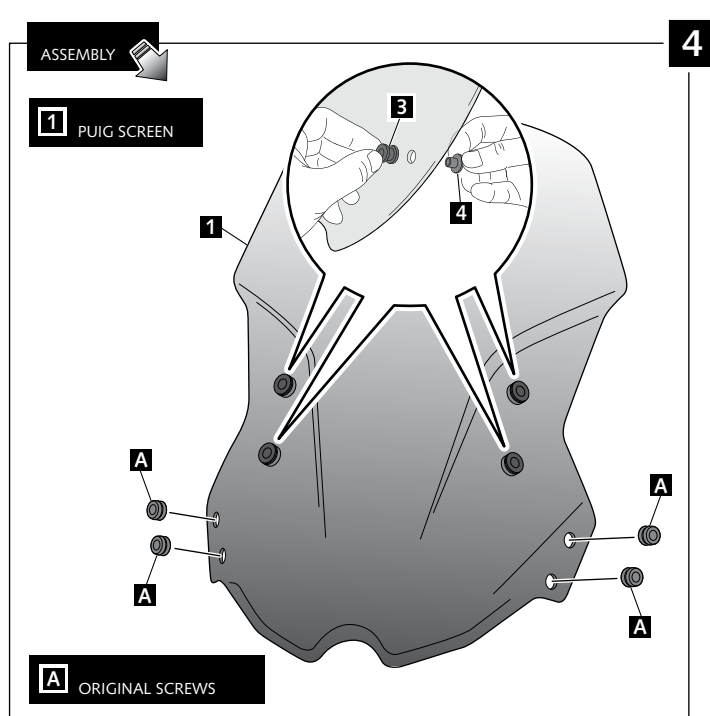
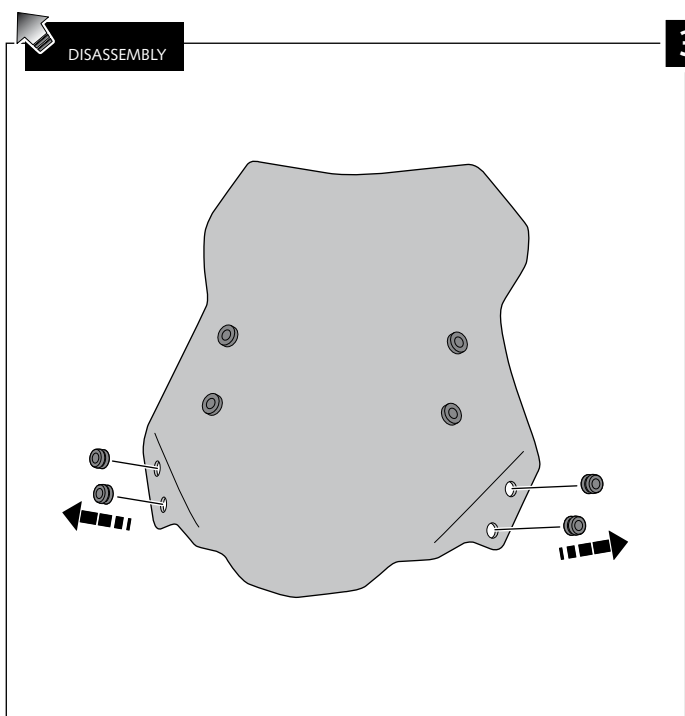
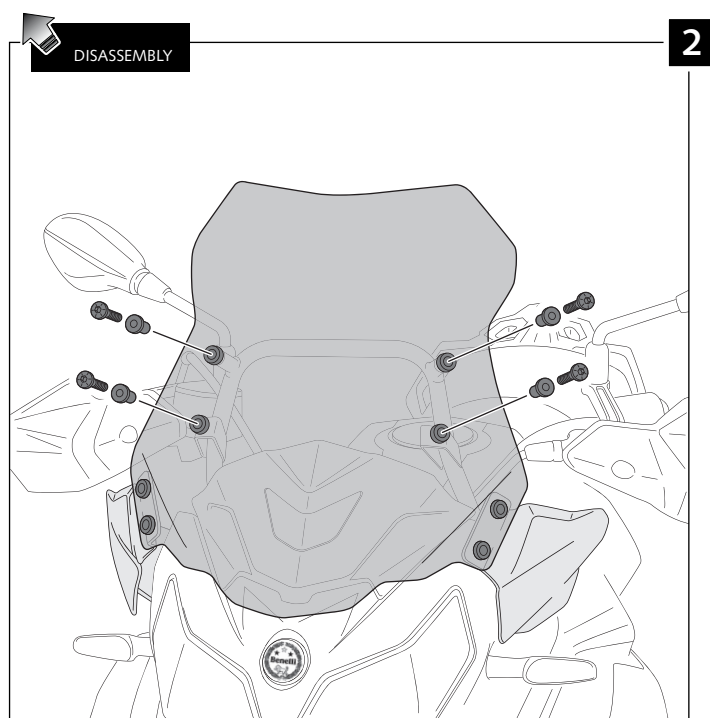
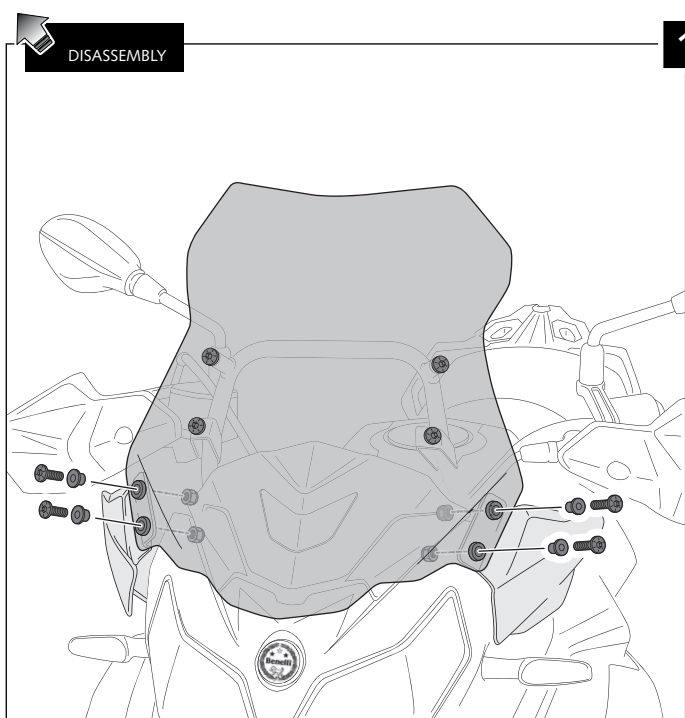
Ref.: 9485



ID	PART	DESCRIPTION	QTY	REF.
1		Touring screen	1	9485F/H/WM3
2		Metallic washer Ø18x Ø6,5 x1,6	4	ARANDPD9021-037
3		Ø22x Ø9 x8 silentblock (supplied already mounted)	4	SILENB000000036
4		Ø15 xØ9 x7,5 bush with flange (supplied already mounted)	4	CASQUI-1A---324

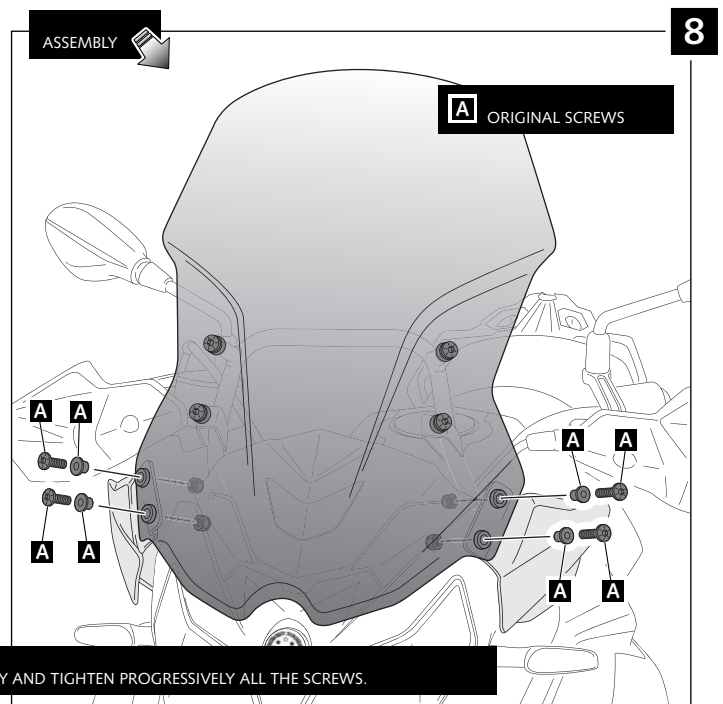
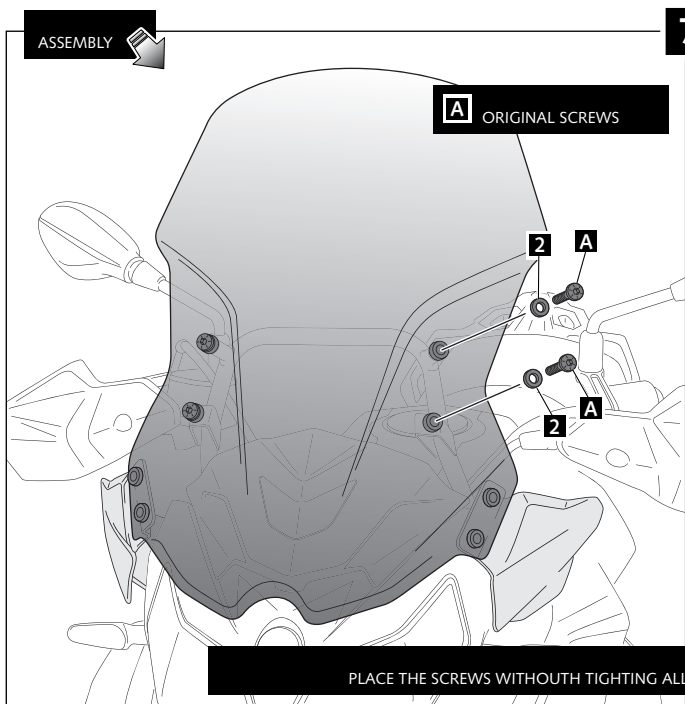
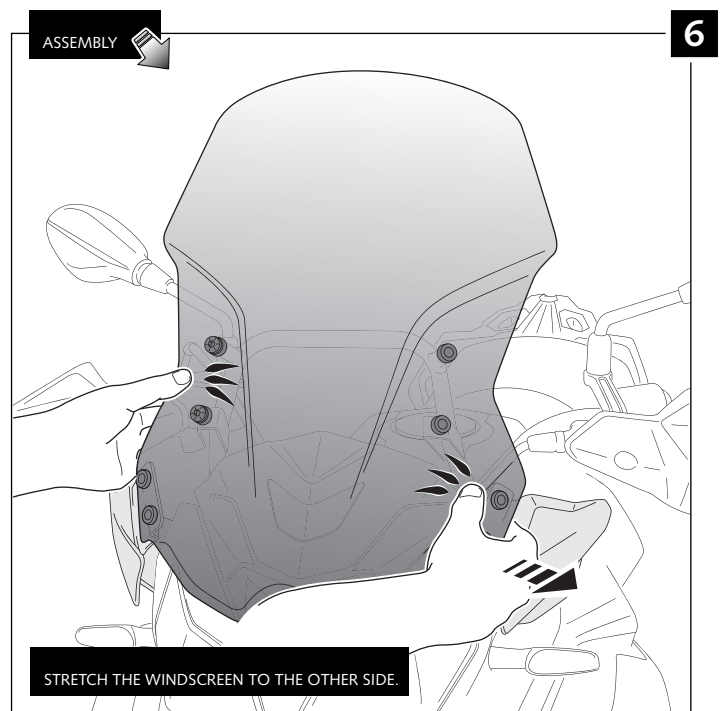
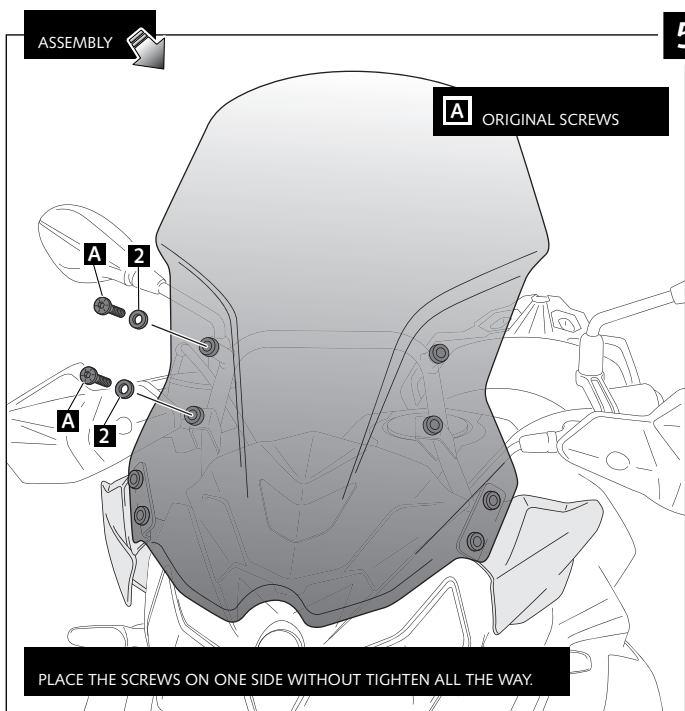
- TOURING SCREEN FOR - BENELLI TRK 502

- MOUNTING INSTRUCTIONS -



- TOURING SCREEN FOR -
BENELLI TRK 502

MOUNTING INSTRUCTIONS



MULTI-ADJUSTABLE VISOR



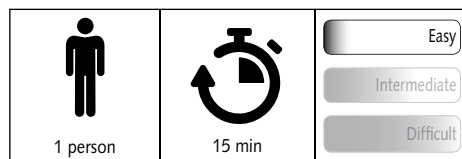
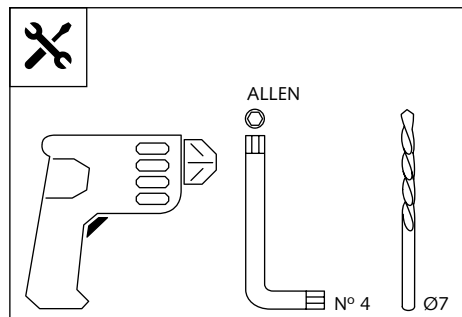
Ref.: 6007

Ref.: 5852

Ref.: 5853

Smoke

Clear



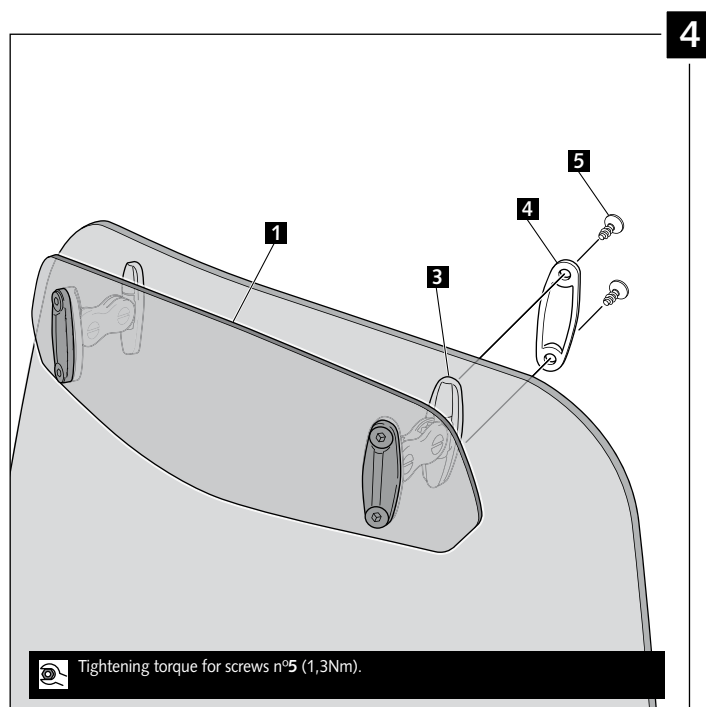
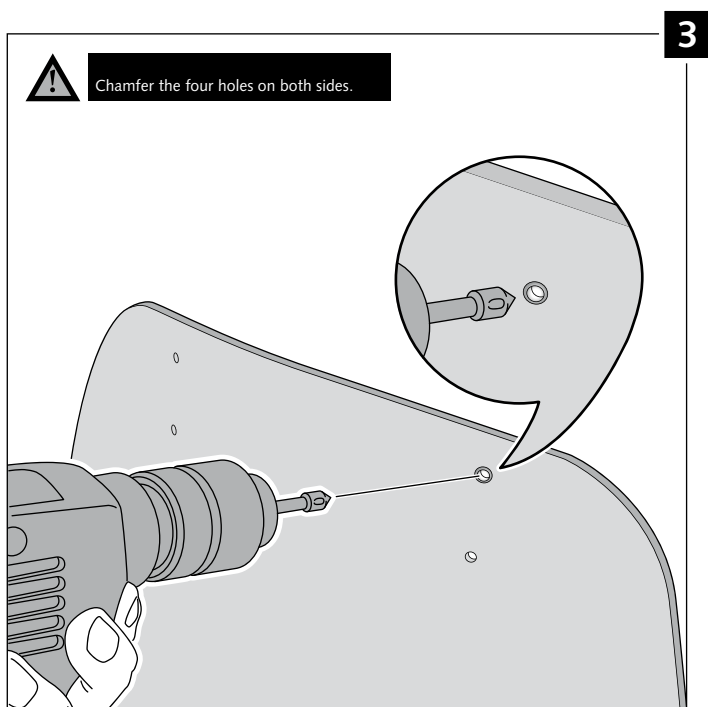
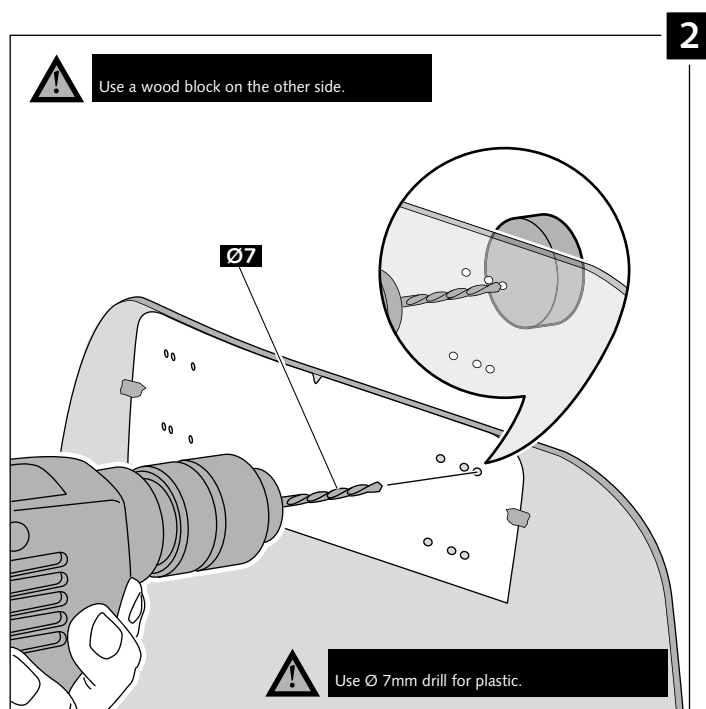
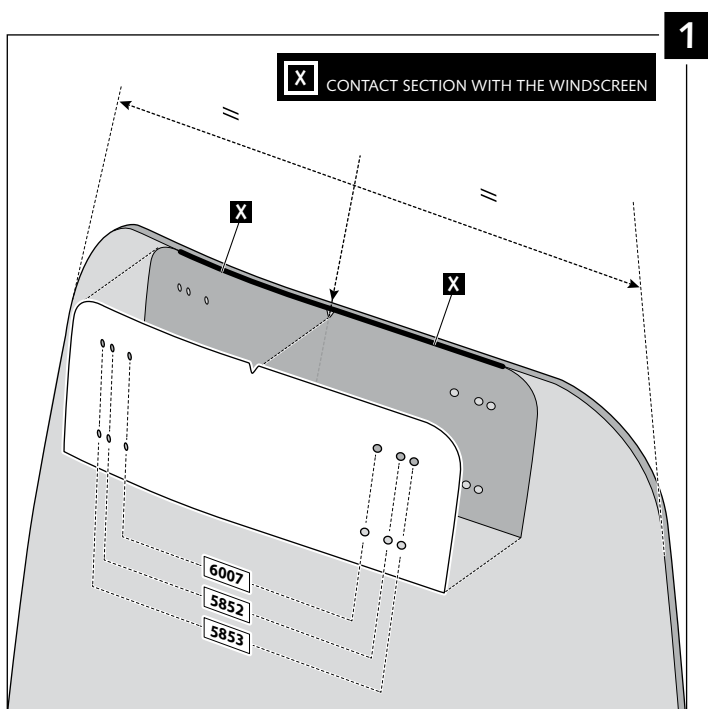
Note:
If the visor is supplied along with the windscreen, the windscreen will come factory-drilled so no drilling is necessary.

ID.	PART	DESCRIPTION	QTY.
1		Visor	1
2		Template	1
3		Multi-adjustable mechanism	2
4		Cap	4
5		Plastic thread fastener M6x12	8

MULTI-ADJUSTABLE VISOR

- MOUNTING INSTRUCTIONS -

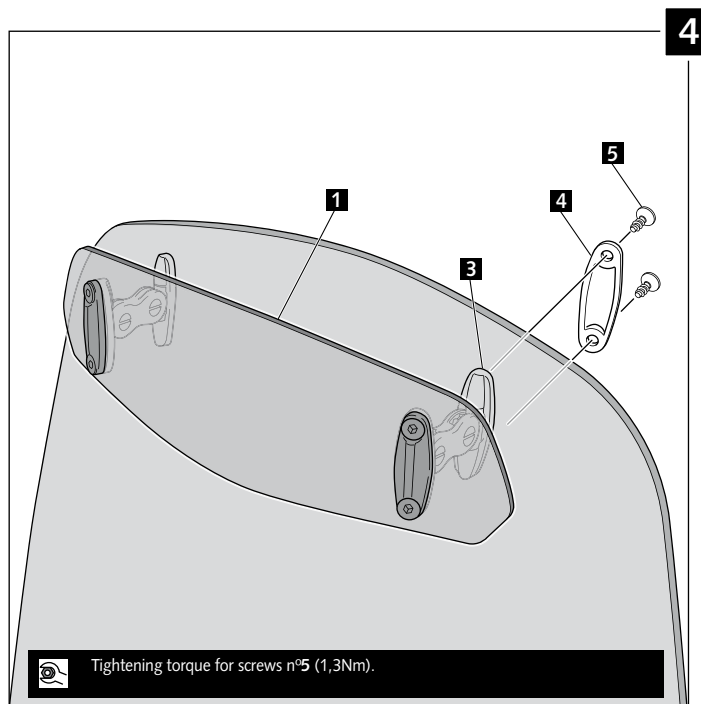
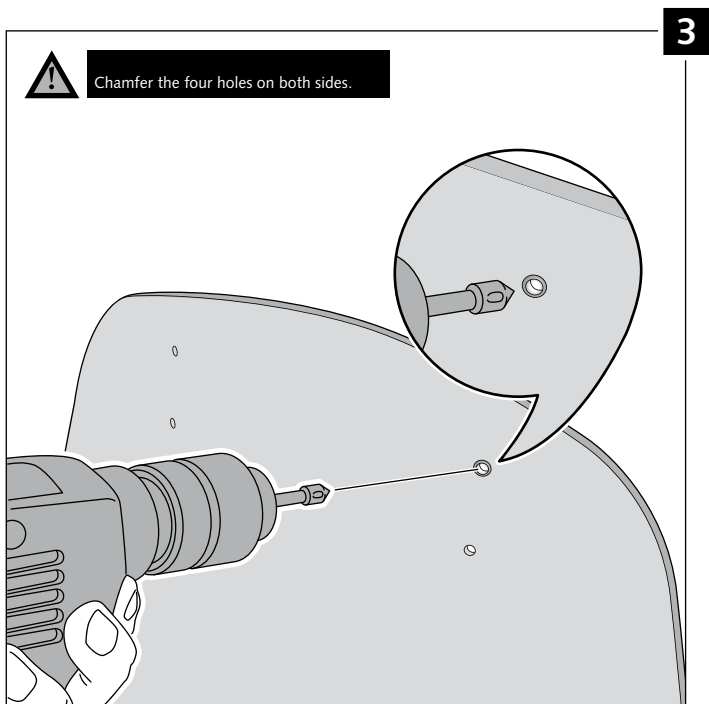
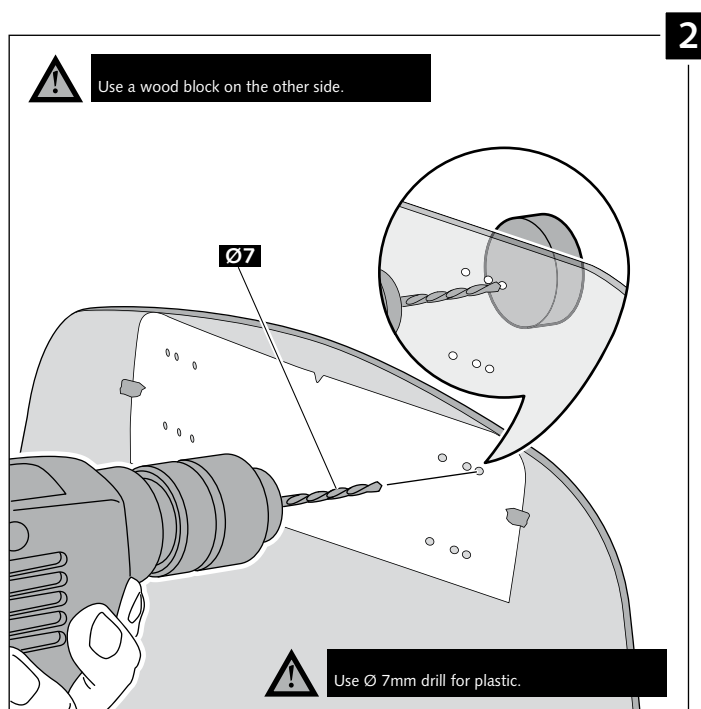
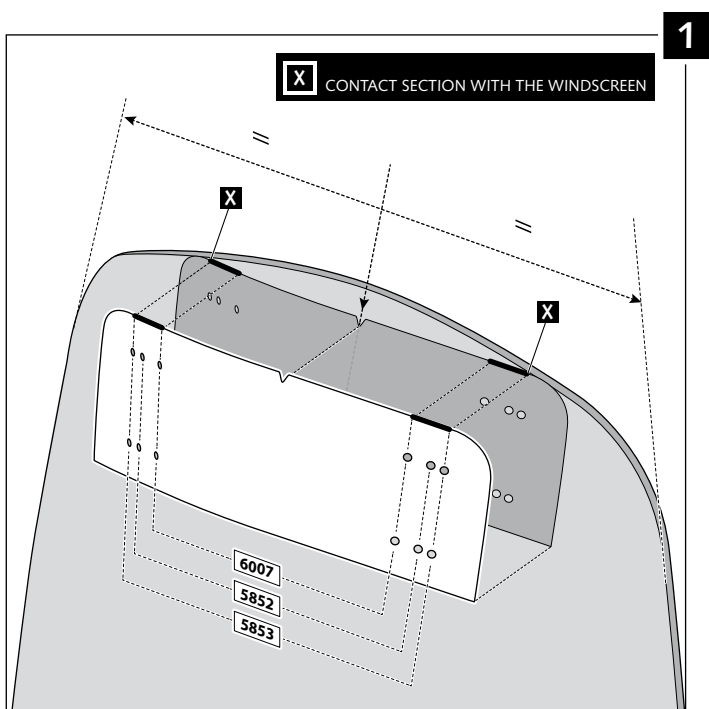
TYPE A



MULTI-ADJUSTABLE VISOR

- MOUNTING INSTRUCTIONS -

TYPE B



MULTI-ADJUSTABLE VISOR

- MOUNTING INSTRUCTIONS -

TYPE C

