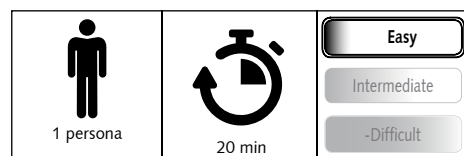
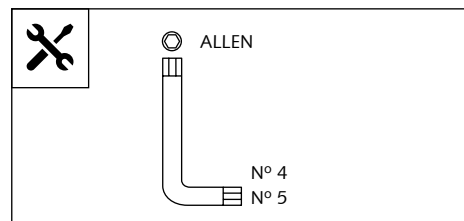
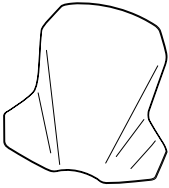




## TOURING SCREEN FOR SUZUKI DL650 V-STROM '17-

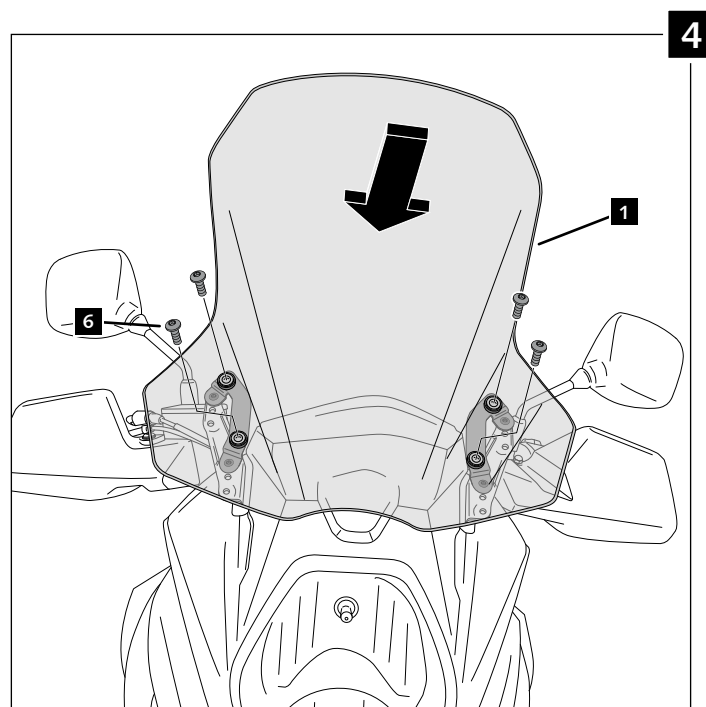
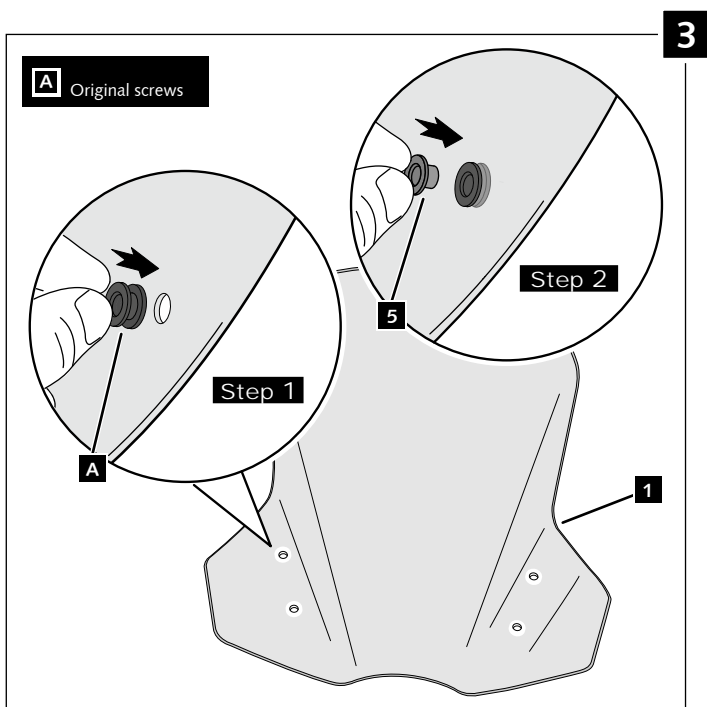
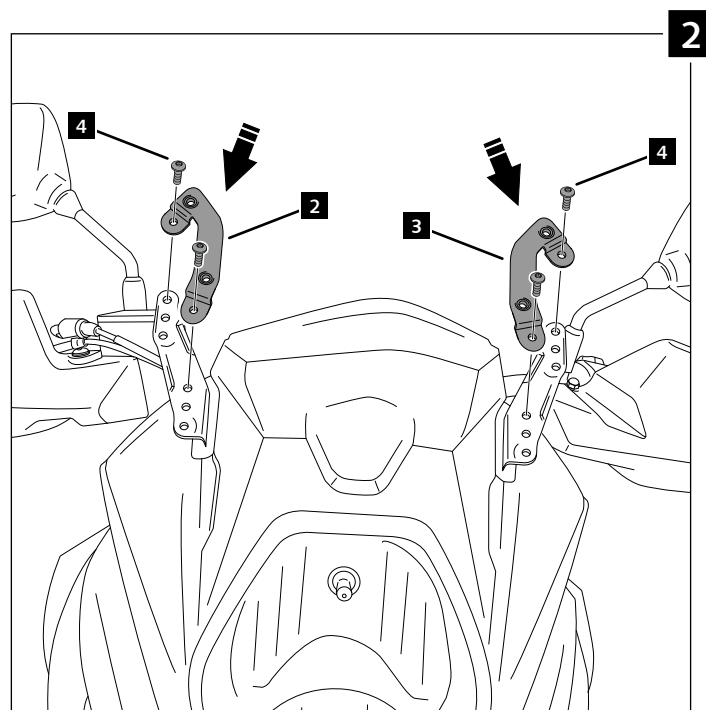
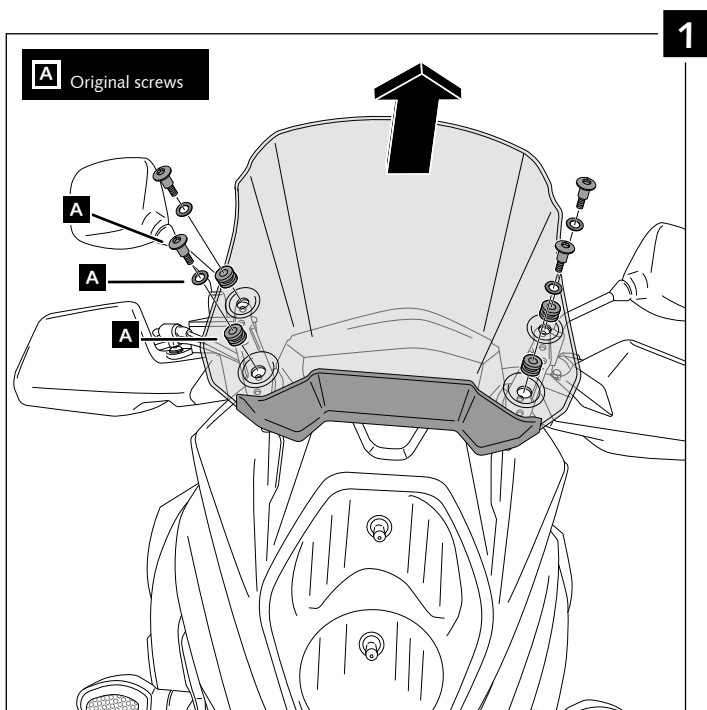
Ref.: 9719



ID.	PART	DESCRIPTION	QTY.	REF.:
1		Windshield	1	9719F/H/HVIS/WM3
2		R· Right support	1	SOPOR-2P-5-9719
3		L· Left support	1	SOPOR-2P-5-9719
4		M6x12 Ø11 screw ISO 7380	4	TORNIAI7380-205
5		Spacer with flange	4	CASQUI-1A---324
6		M6x16 Ø14 screw ISO 7380	4	TORNI-I7380-403

## TOURING SCREEN FOR SUZUKI DL650 V-STROM '17-

### MOUNTING INSTRUCTIONS



## MULTI-ADJUSTABLE VISOR

TYPE WINDSCREEN **A**



TYPE WINDSCREEN **B**



TYPE WINDSCREEN **C**



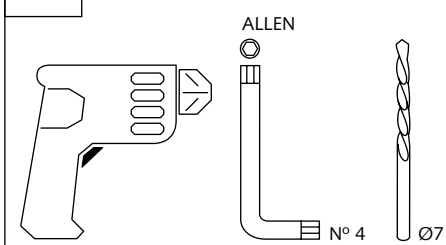
Ref.: 6007

Ref.: 5852

Ref.: 5853

Smoke

Clear



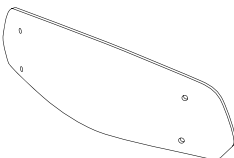
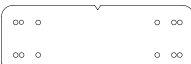



1 person



15 min

Easy

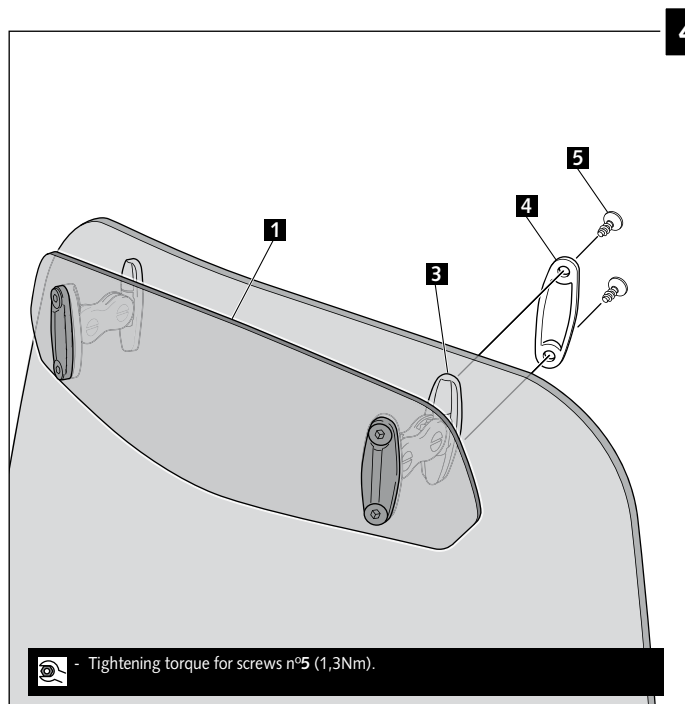
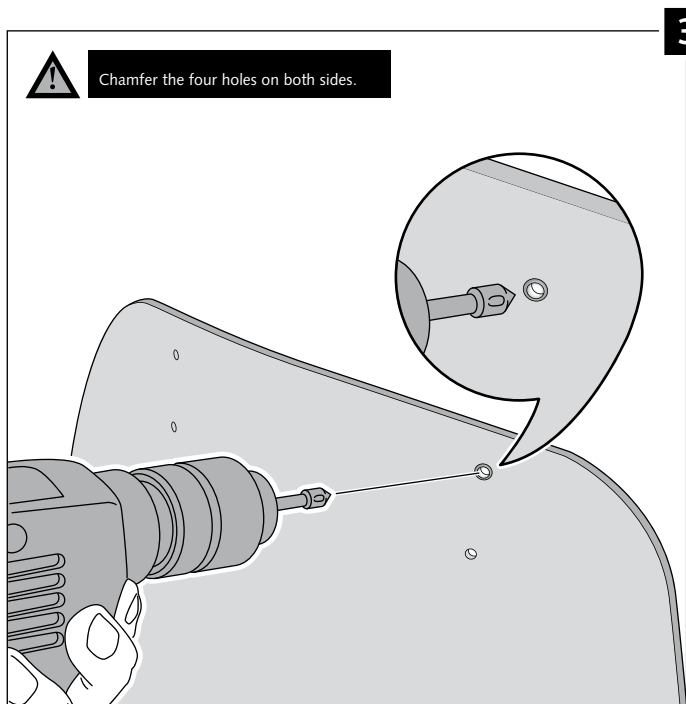
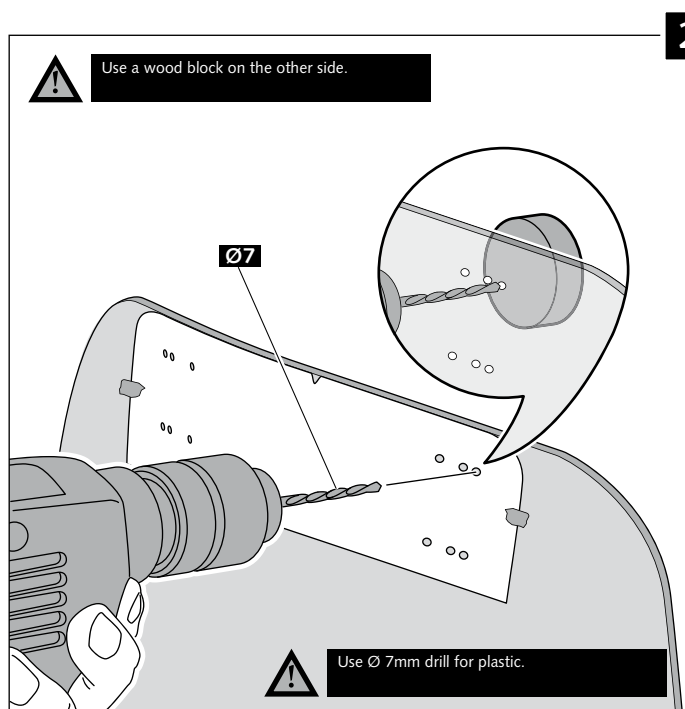
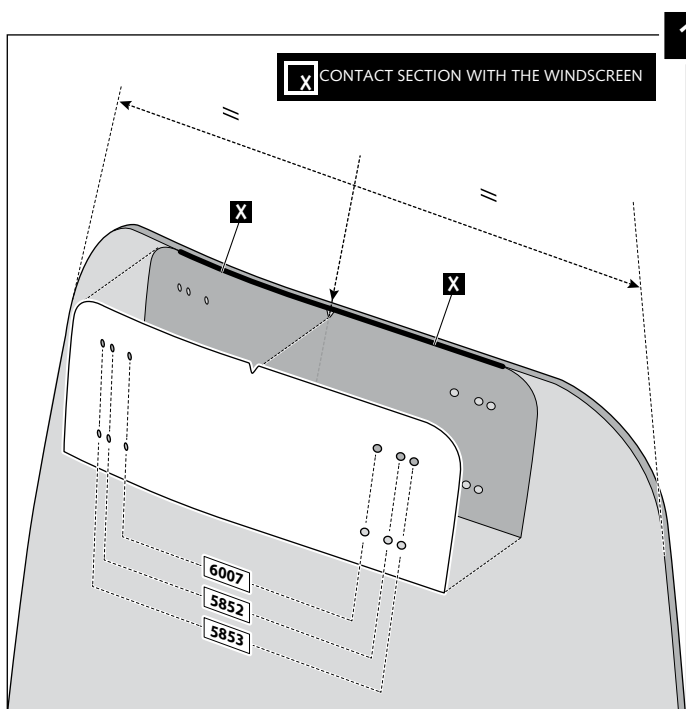
Note:  
If the visor is supplied along with the windscreen, the windscreen will come factory-drilled so no drilling is necessary.

ID.	PART	DESCRIPTION	QTY.
1		Visor	1
2		Template	1
3		Multi-adjustable mechanism	2
4		Cap	4
5		Plastic thread fastener M6x12	8

# MULTI-ADJUSTABLE VISOR

## MOUNTING INSTRUCTIONS

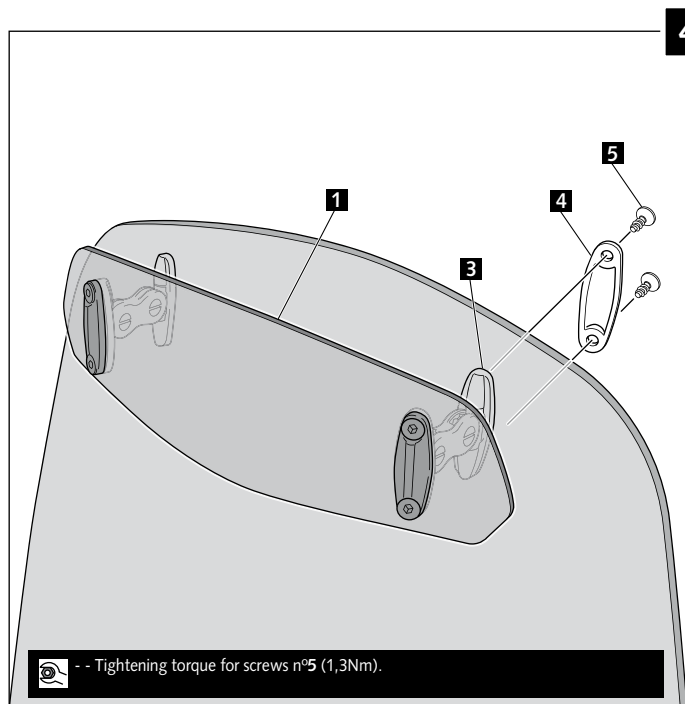
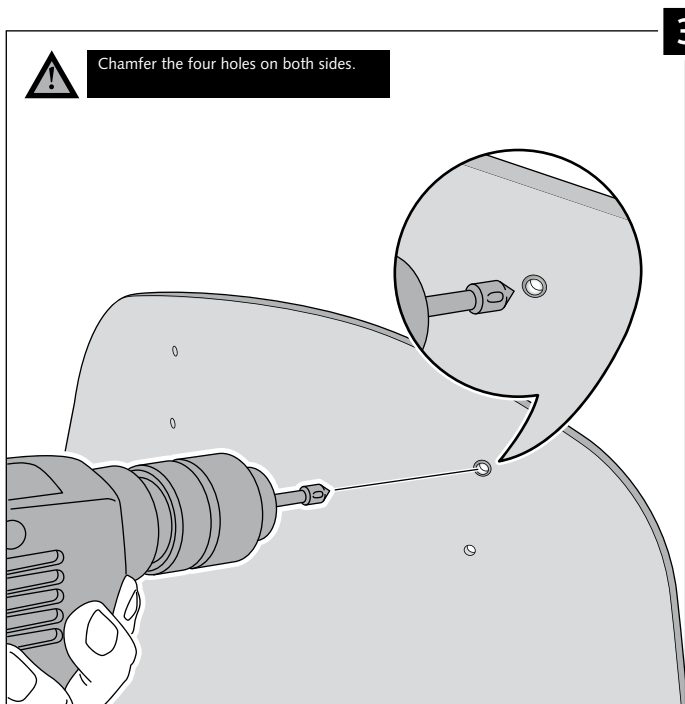
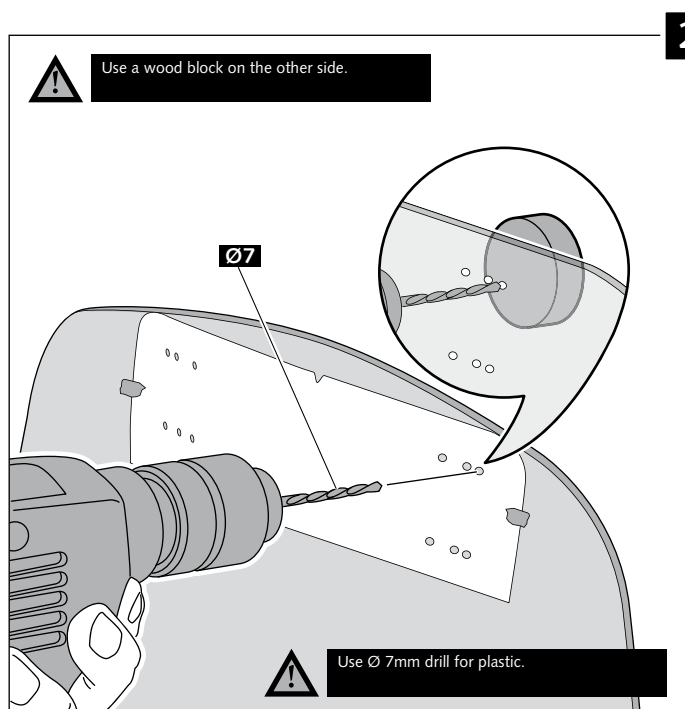
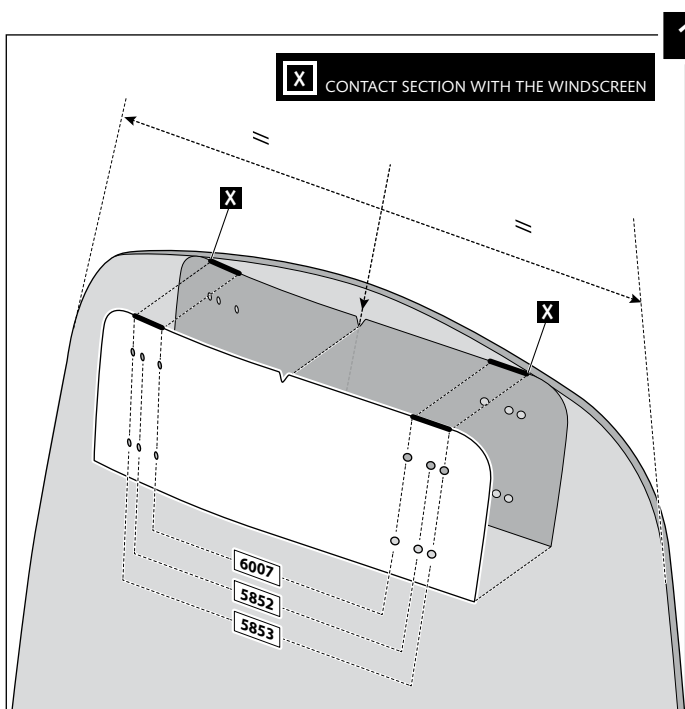
### TYPE A



# MULTI-ADJUSTABLE VISOR

## MOUNTING INSTRUCTIONS

### TYPE B



## MULTI-ADJUSTABLE VISOR

### MOUNTING INSTRUCTIONS

#### TYPE C

