

## INSTRUCTIONS TO ASSEMBLE

Remove the fasteners that subject the chassis to the engine, on the point marked below (and the opposite side). Mount the protectors on each own side as the figure below shows. Tight the set, and place the caps.

All the screws replaced, should be tightened to the torque specified in the oem maintenance manual for your motorcycle. if no torque specifications are provided in the oem maintenance manual, may be used 54Nm for all M10 screws.

Medium strength liquid thread-locker (i.e., "Loctite") should be used to secure all screws, bolts and nuts.

All screws, bolts and nuts should be checked after driving the first 50 km to ensure that all are tightened to the proper torque.

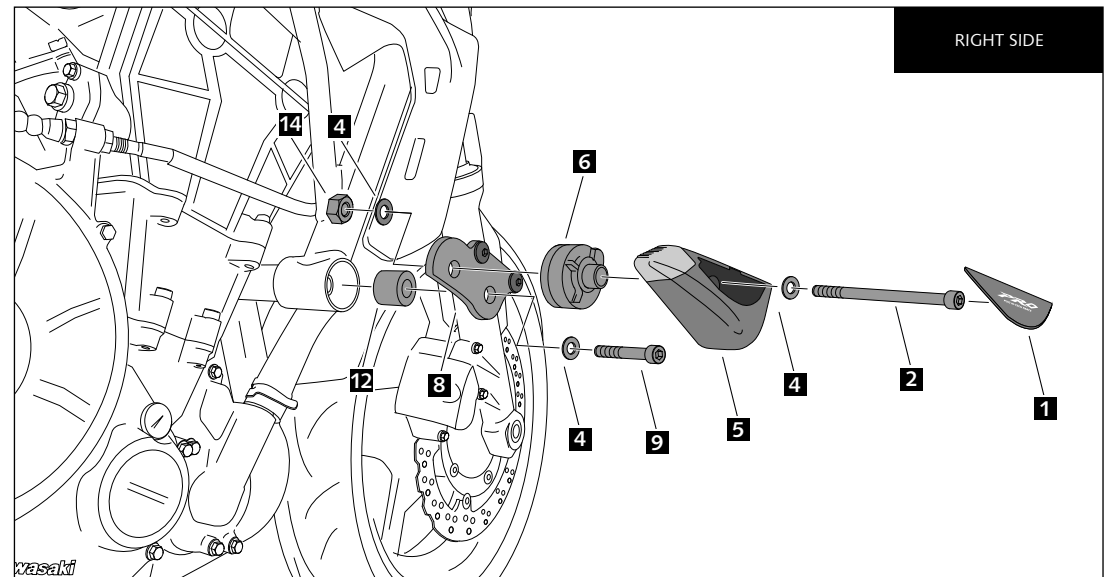
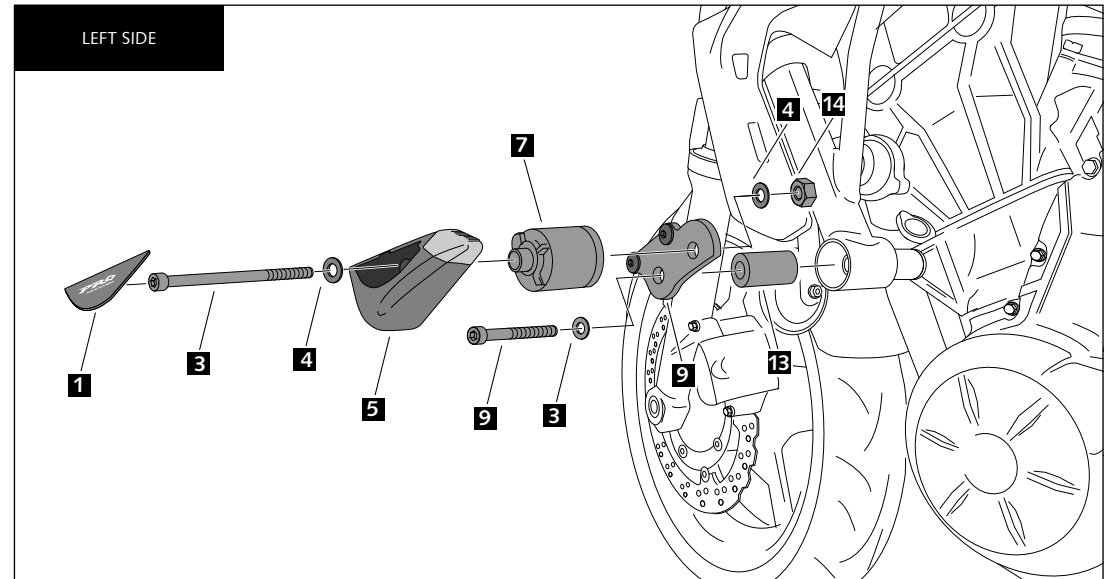
ID.	DESCRIPTION	QTY.
1	Plastic cap	2
2	M10/150x70 DIN912 screw	1
3	M10/150x70 DIN912 screw	1
4	Ø20ext. Ø10int x2 DIN125/A washer	4
5	Nylon protector	2
6	Aluminium metal spacer	1
7	Aluminium metal spacer	1
8	Right shifter	1
9	Left shifter	1
10	M10/150x70 DIN912 screw	1
11	M10/150x70 DIN912 screw	1
12	Ø28X19 right aluminium metal spacer	1
13	Ø28X19 left aluminium metal spacer	1
14	M10 DIN985 nut	2

FOR TO ASSEMBLE THE CRASH PADS, IF YOU ARE NOT A TRAINED MECHANIC, PLEASE CONTACT A SPECIALIST. MOTOPLASTIC, S.A. TAKES NO RESPONSIBILITY FOR DAMAGES CAUSED BY IMPROPER INSTALLATION. THE USE OF CRASH PADS DO NOT GUARANTEE A FULL PROTECTION IN CASE OF ACCIDENT. MOTOPLASTIC-PUIG DECLINE ANY RESPONSIBILITY IN CASE OF MOTORCYCLE DAMAGE.

## MOUNTING INSTRUCTIONS

### CRASH PADS FOR KAWASAKI Z650 '17

Ref.: 9354N



Look through our comprehensive collection of motorcycle frame and body right away.