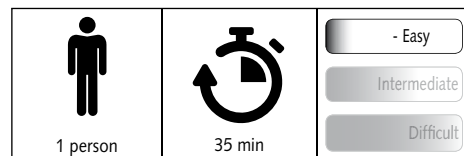
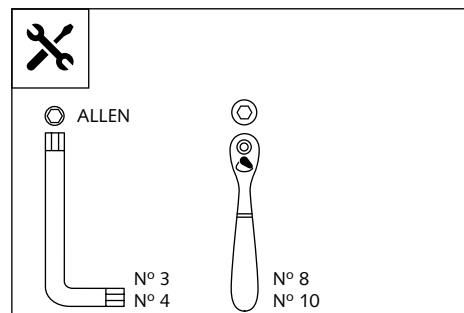


- HANDPROTECTORS FOR - TRIUMPH SPEED TRIPLE/R '16 -

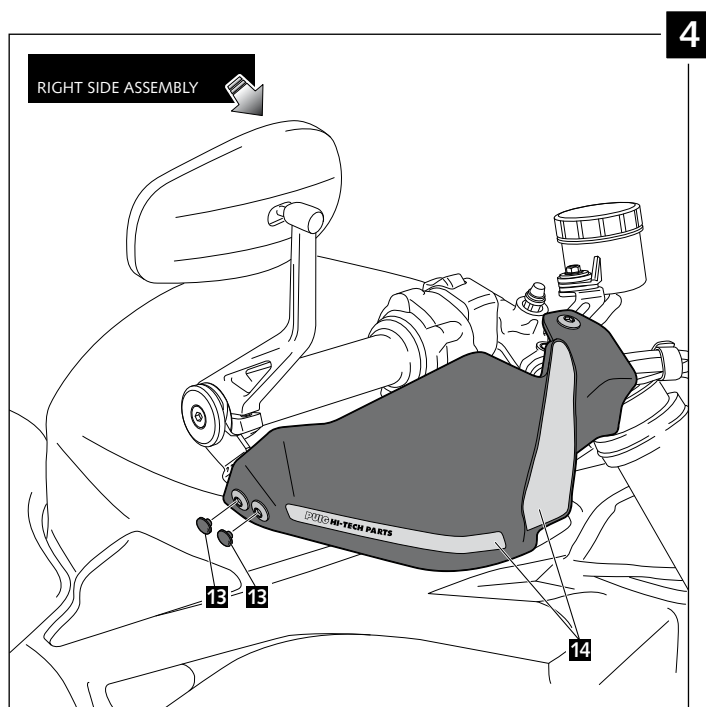
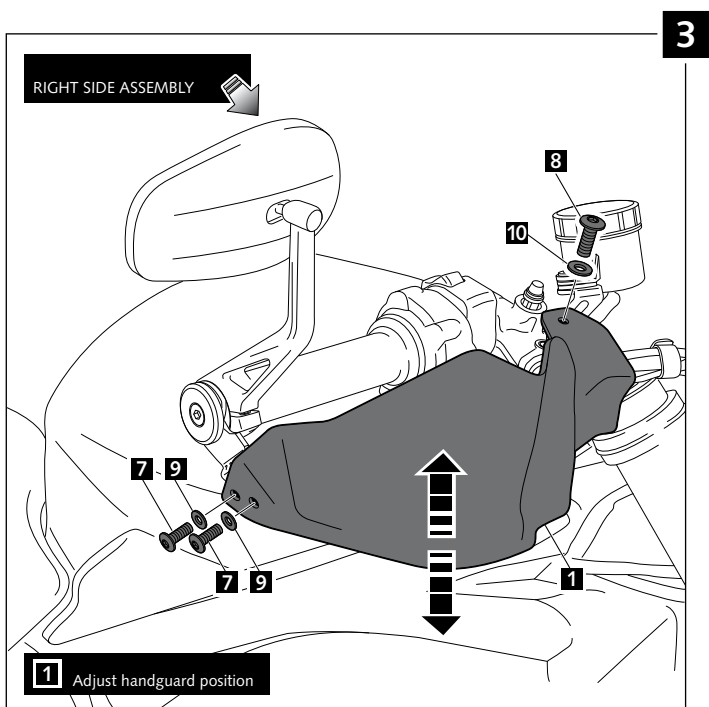
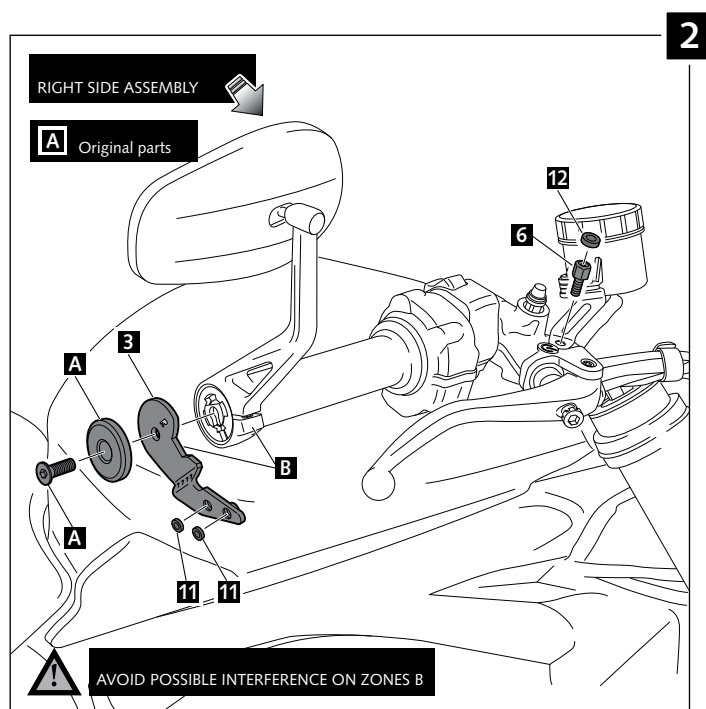
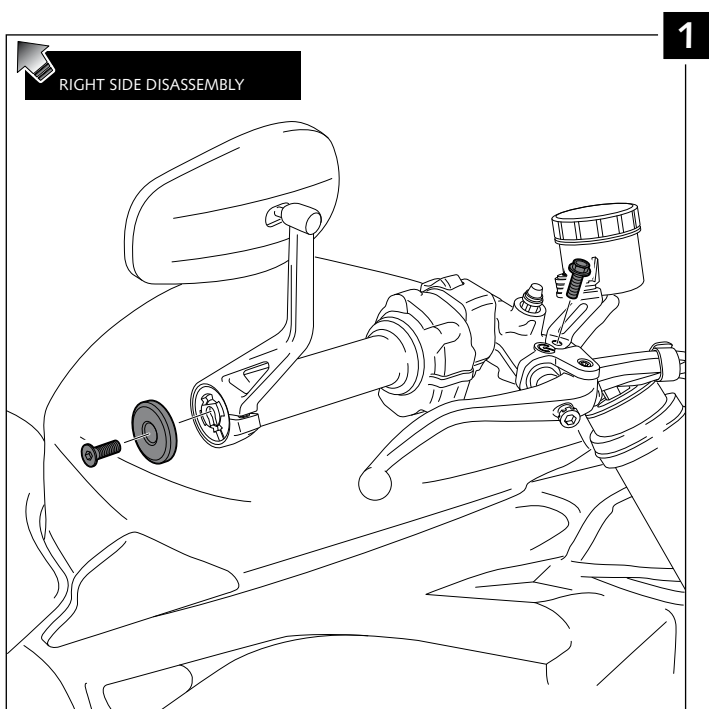
Ref.: 9255



| ID. | PART | DESCRIPTION | QTY. |
|-----|------|--|------|
| 1 | | Right handguard | 1 |
| 2 | | Left handguard | 1 |
| 3 | | Right handlebar anchoring part (R) | 1 |
| 4 | | Left handlebar anchoring part (L) | 1 |
| 5 | | Left metal support (L) | 1 |
| 6 | | Special screw M6x12 + interior thread M6x8 | 1 |
| 7 | | M5X11 Ø11 ISO7380 Allen screw | 5 |
| 8 | | M6X12 Ø11 ISO7380 Allen screw | 1 |
| 9 | | M5x1 Nylon washer | 5 |
| 10 | | M6x1 Nylon washer | 1 |
| 11 | | Ø4,5xØ11,5x2mm Rubber washer | 5 |
| 12 | | Ø4,5xØ14x4mm Rubber washer | 1 |
| 13 | | M5 ISO 7380 Allen screw cap | 5 |
| 14 | | Stikers set | 1 |

- HANDPROTECTORS FOR -
TRIUMPH SPEED TRIPLE/R '16 -

- MOUNTING INSTRUCTIONS -



- HANDPROTECTORS FOR -
TRIUMPH SPEED TRIPLE/R '16 -

- MOUNTING INSTRUCTIONS -

